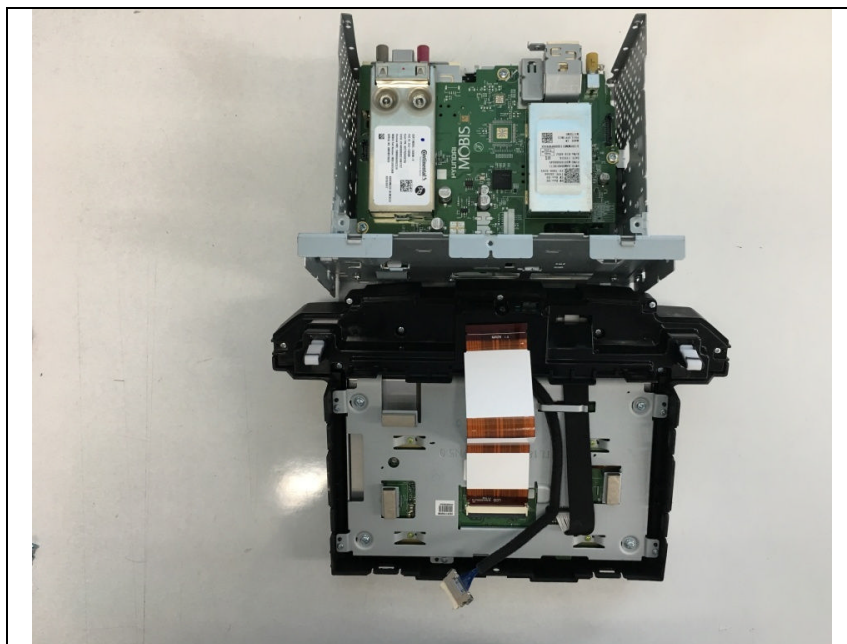
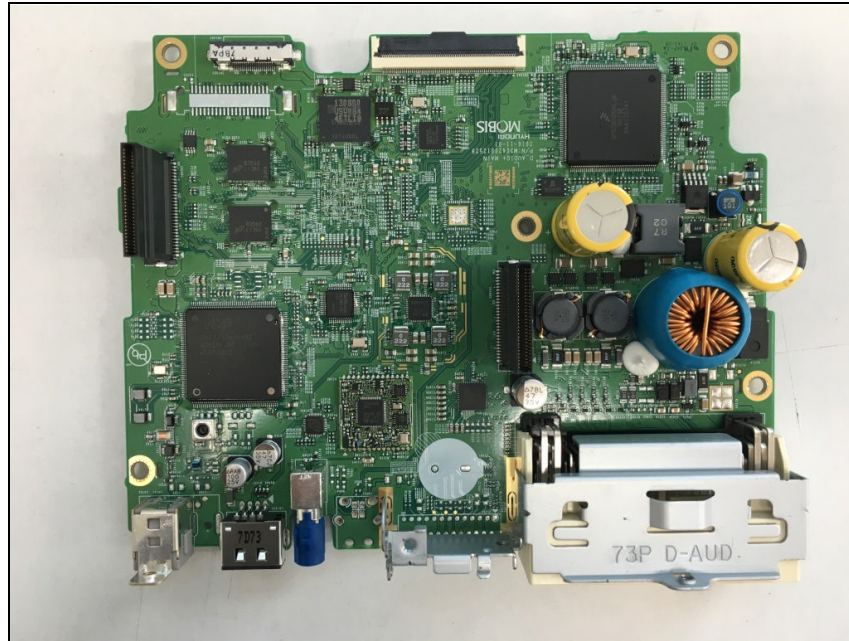


Internal photos of EUT

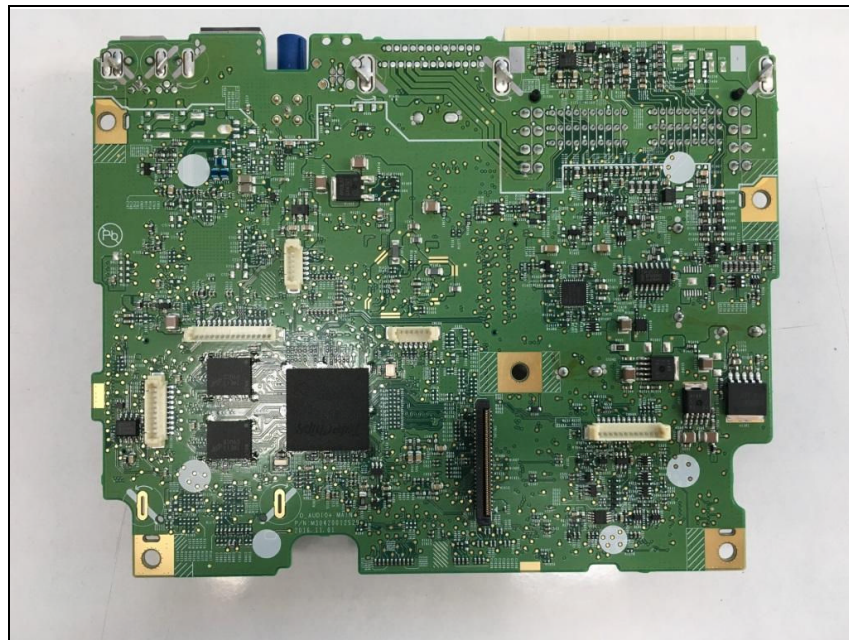
Top view of EUT



Top view of Main PCB



Bottom view of Main PCB



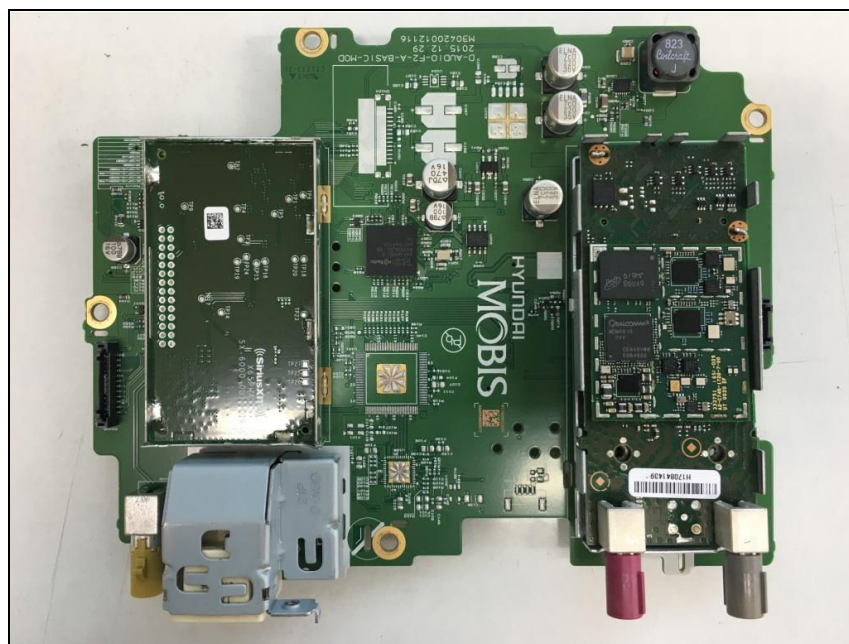
Top view of LCD



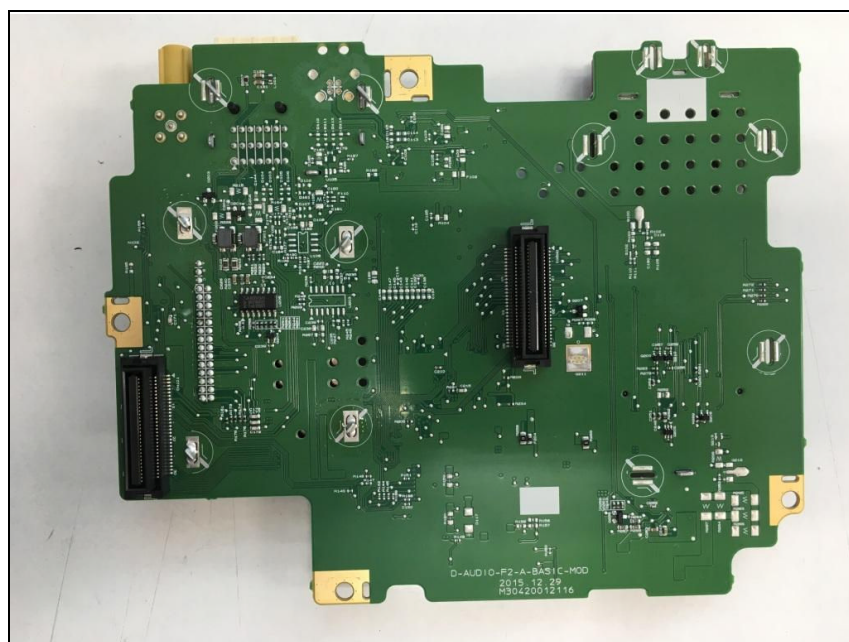
Bottom view of LCD



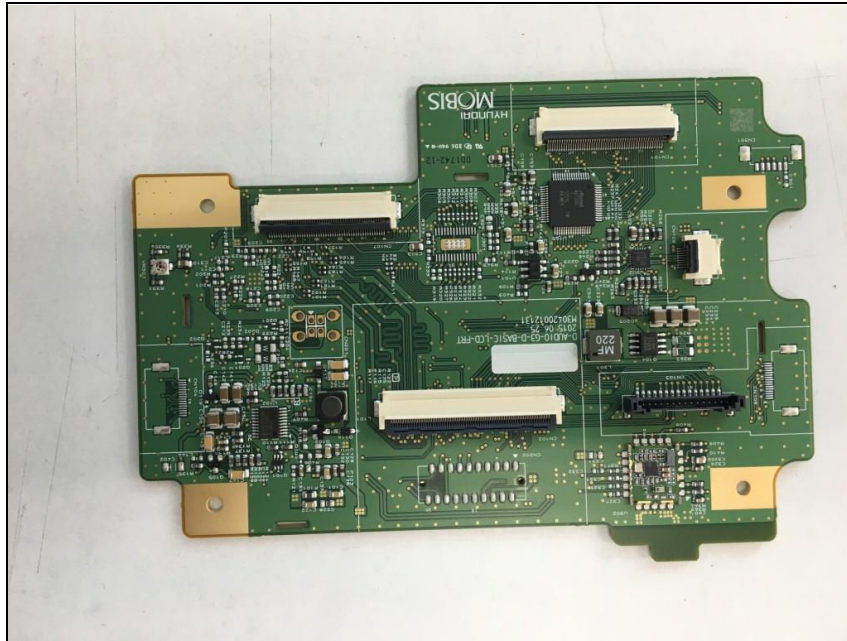
Top view of SUB PCB



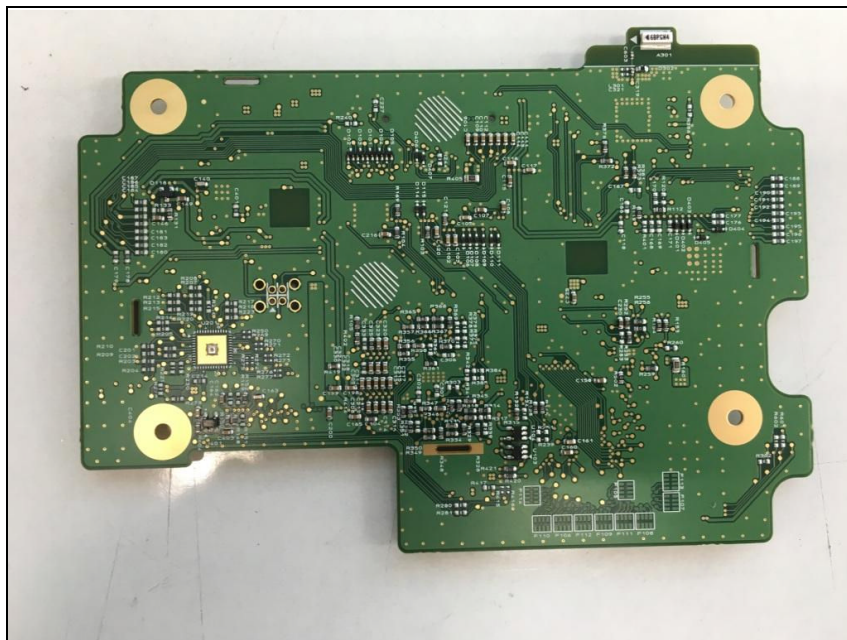
Bottom view of SUB PCB



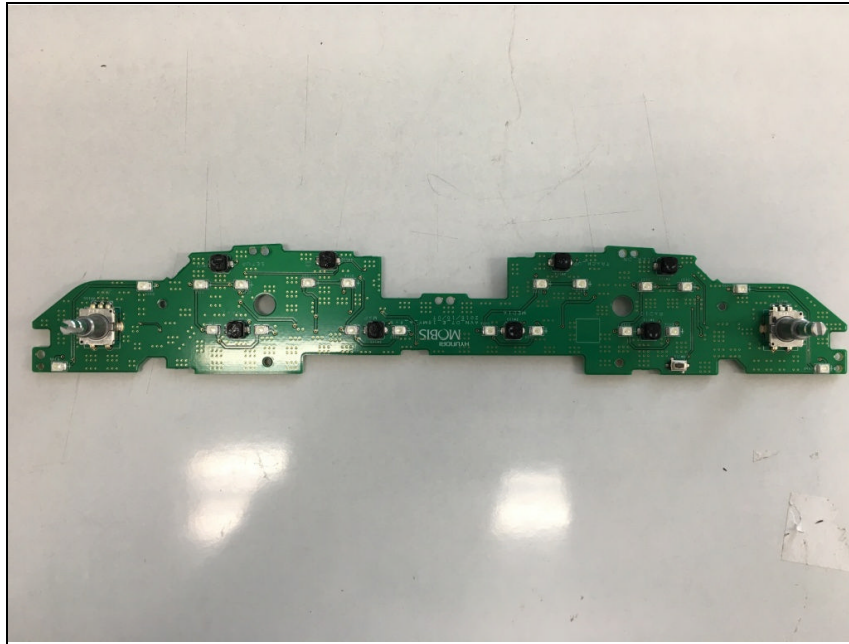
Top view of SUB PCB



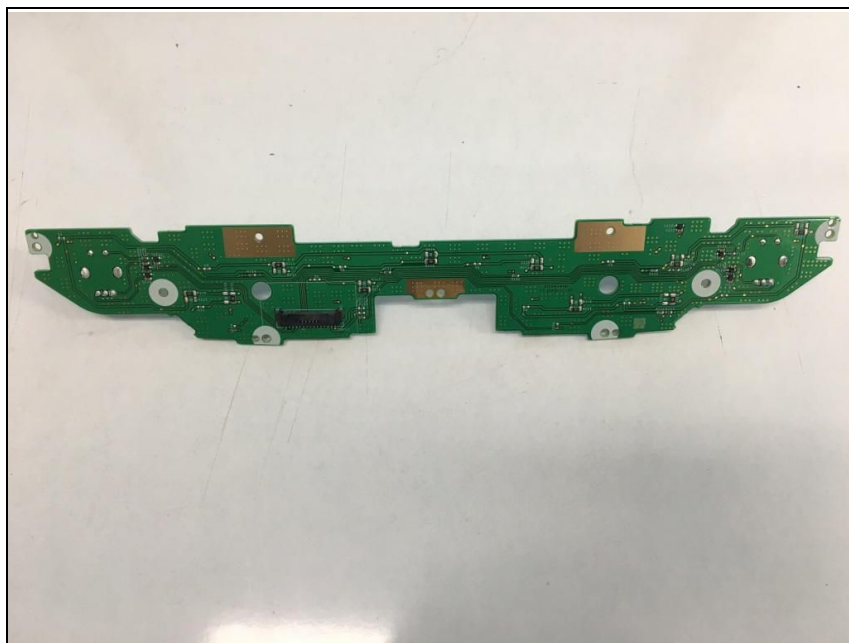
Bottom view of SUB PCB



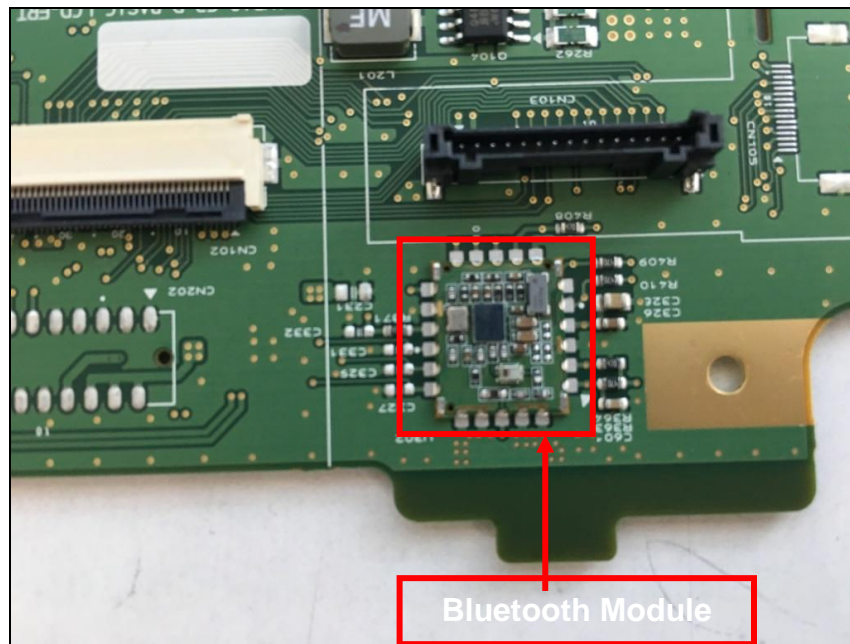
Top view of Key PCB



Bottom view of Key PCB



View of Bluetooth Module



View of antenna

