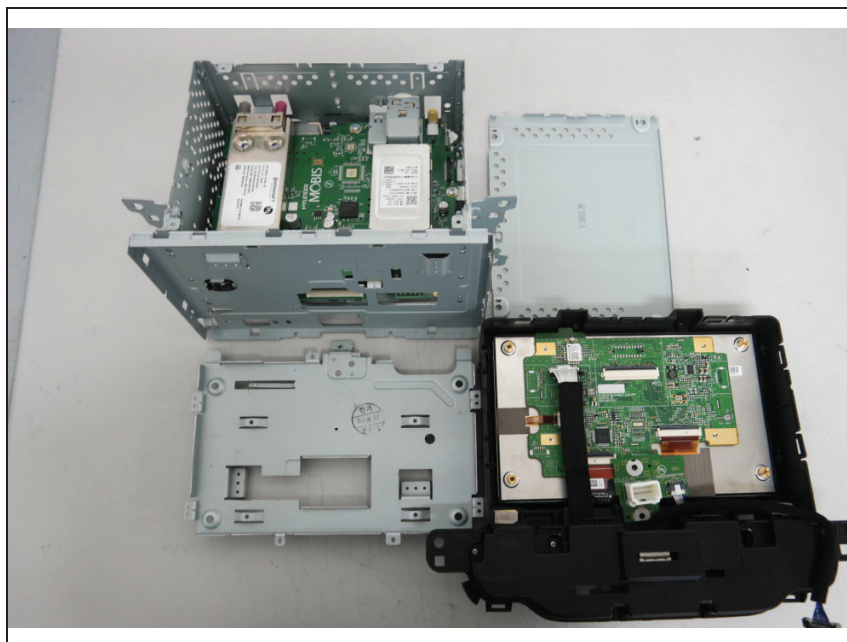
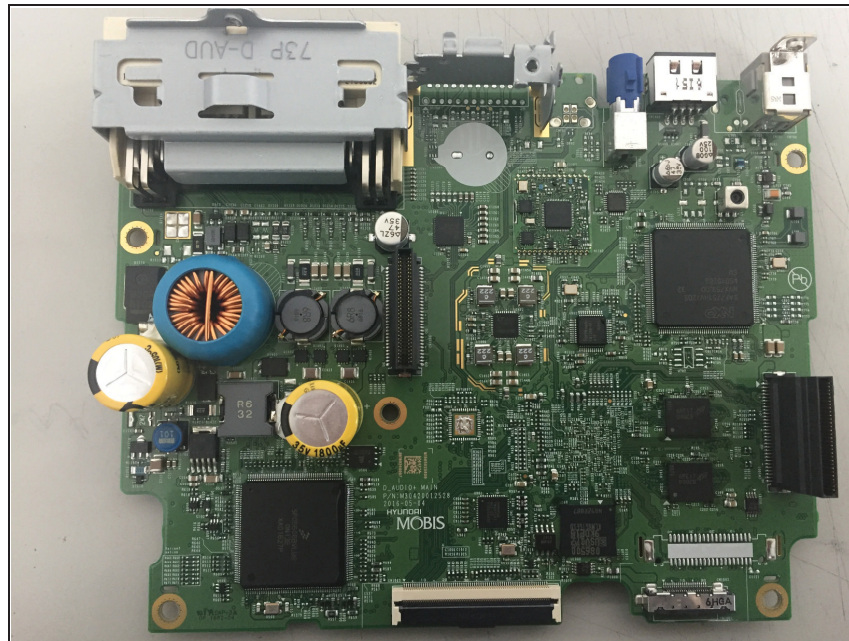


Internal photos of EUT

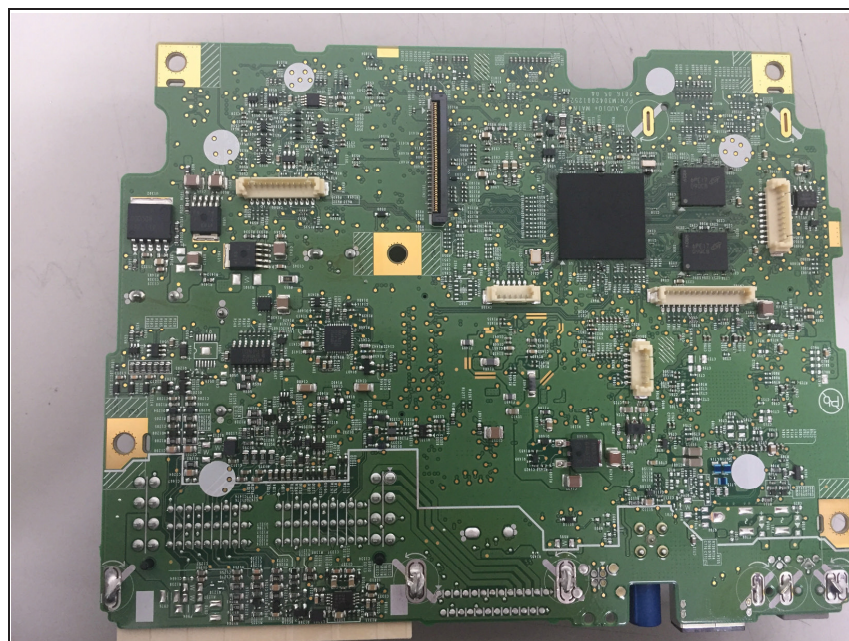
Internal view of EUT



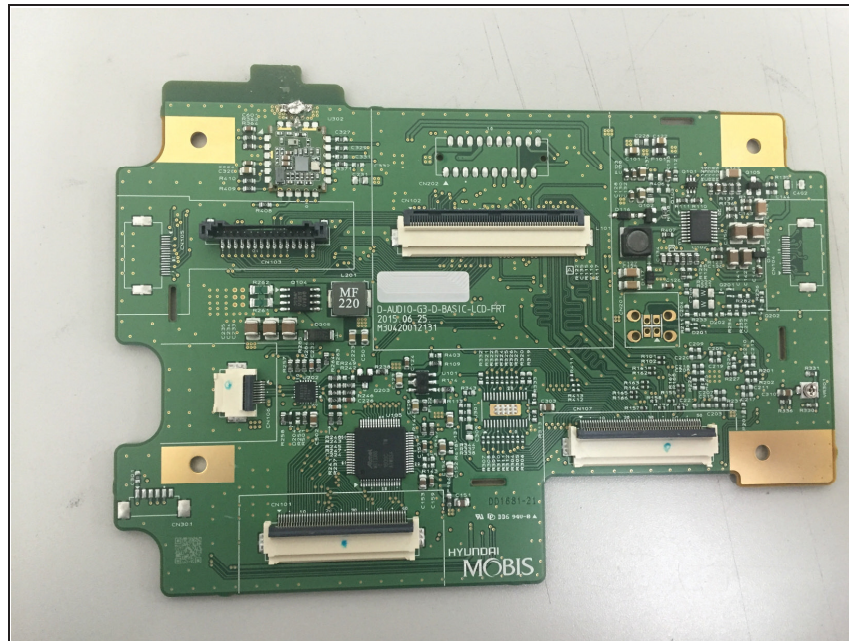
Top view of Main PCB



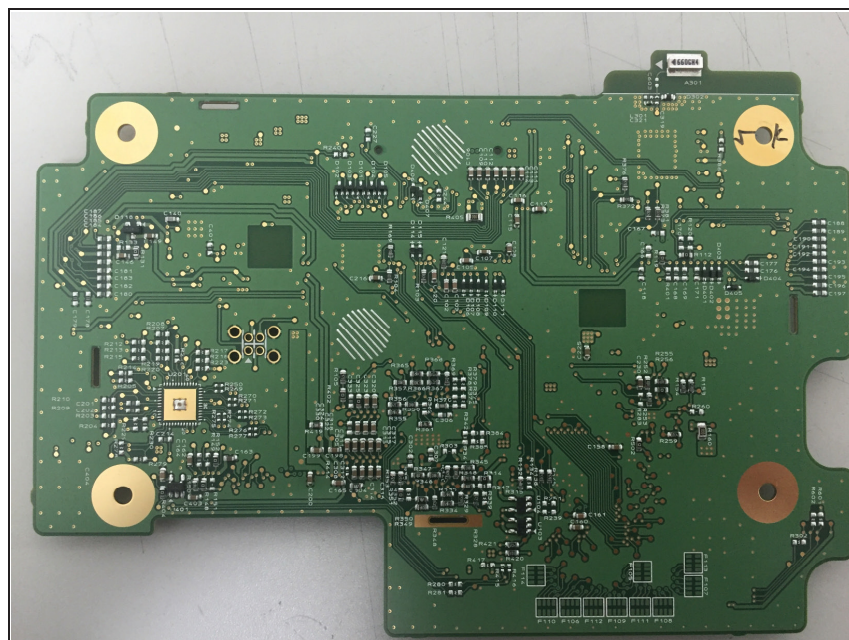
Bottom view of Main PCB



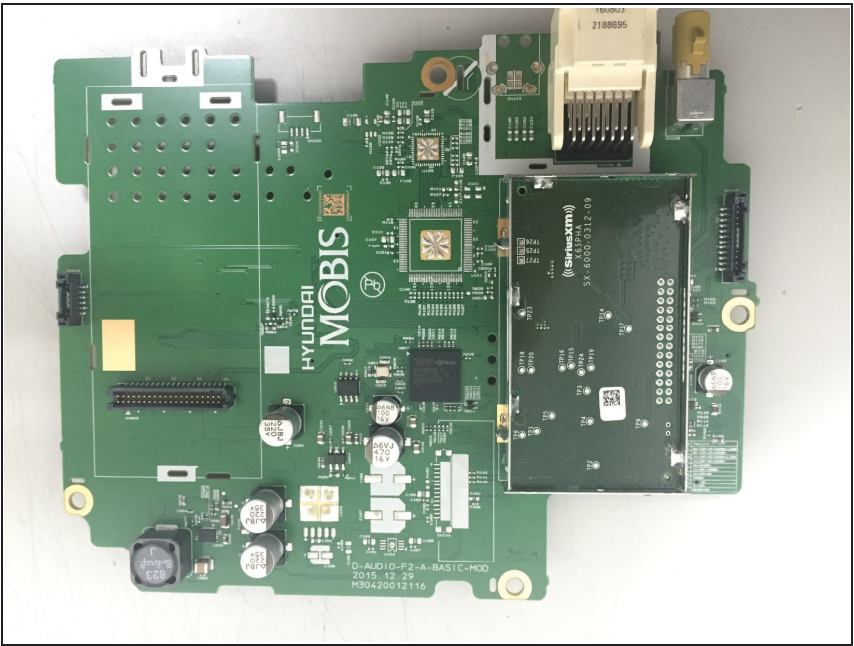
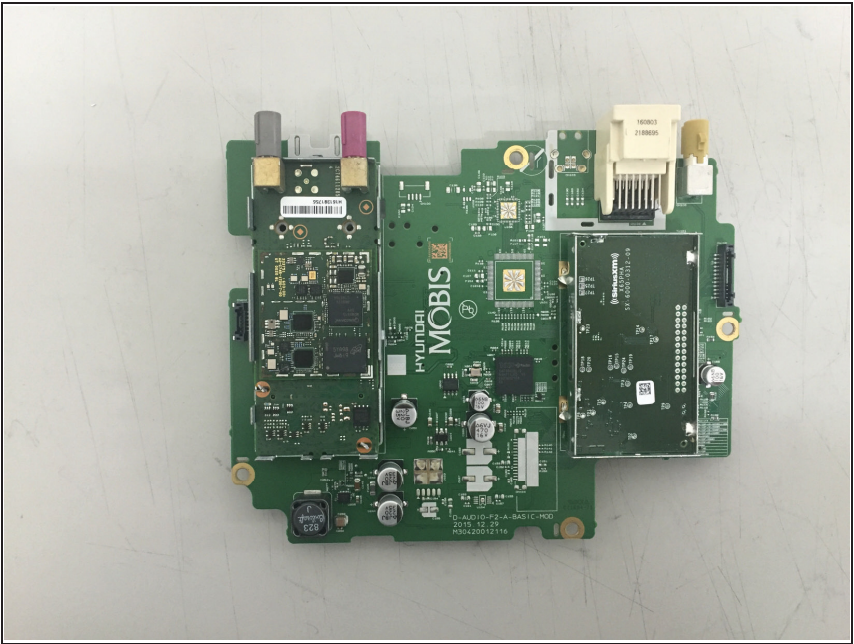
Top view of LCD PCB



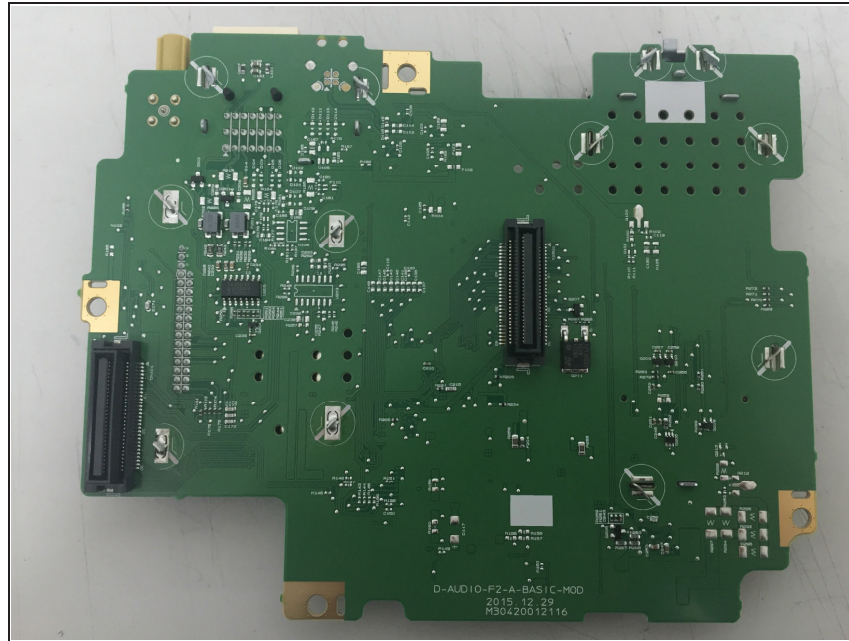
Bottom view of LCD PCB



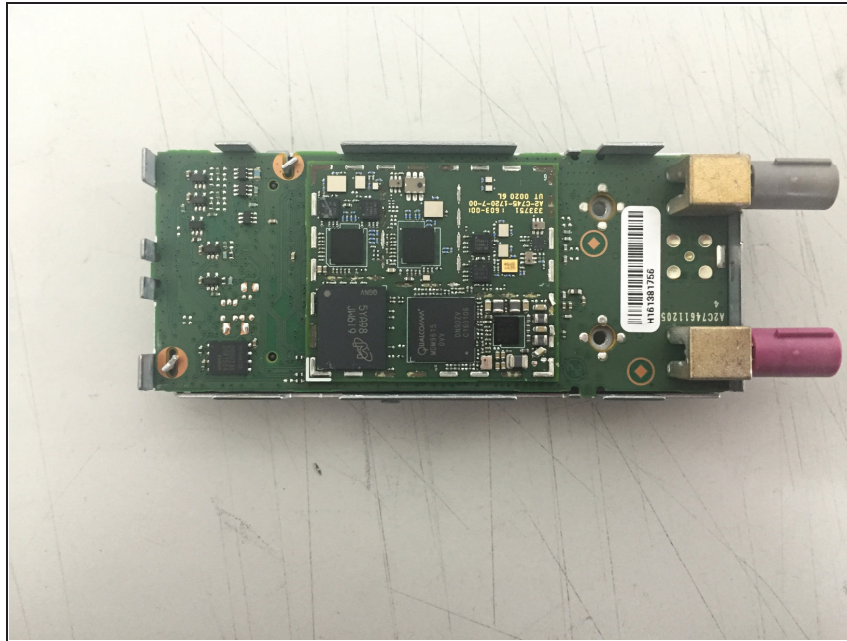
Top view of Sub1 PCB



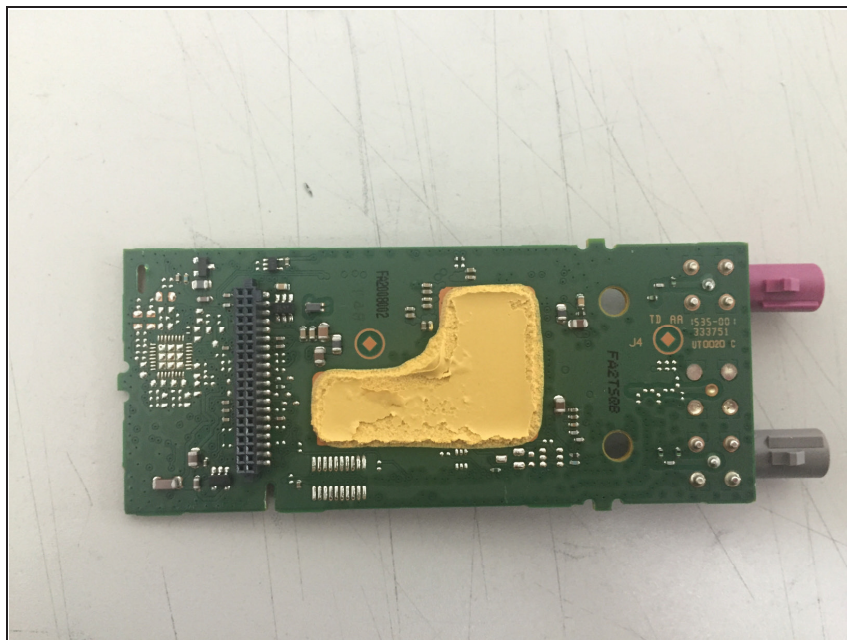
Bottom view of Sub1 PCB



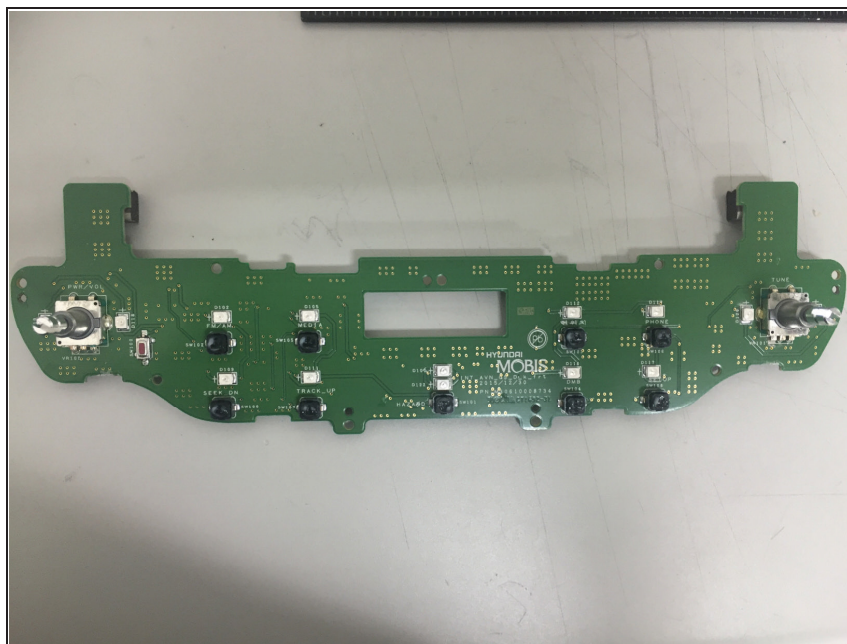
Top view of LTE, CDMA Module



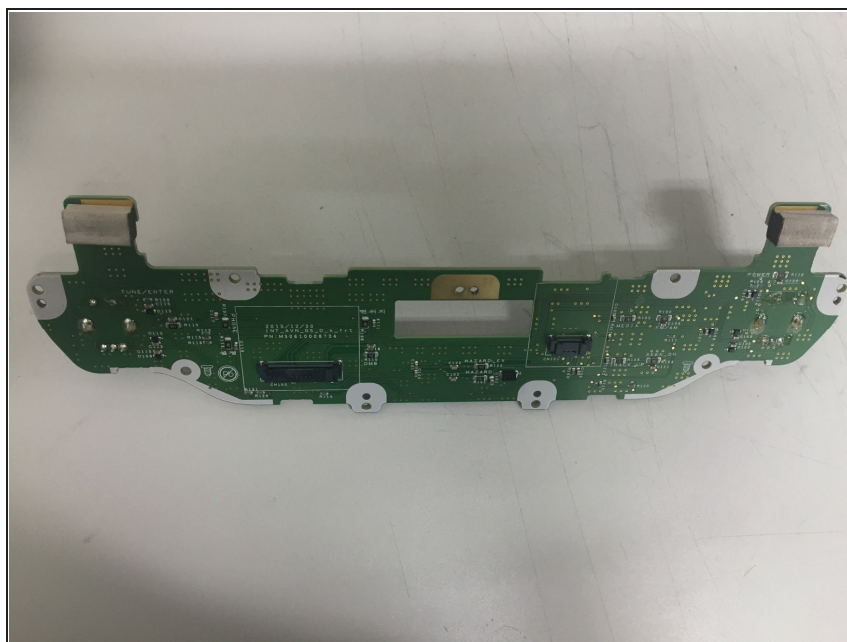
Bottom view of LTE, CDMA Module



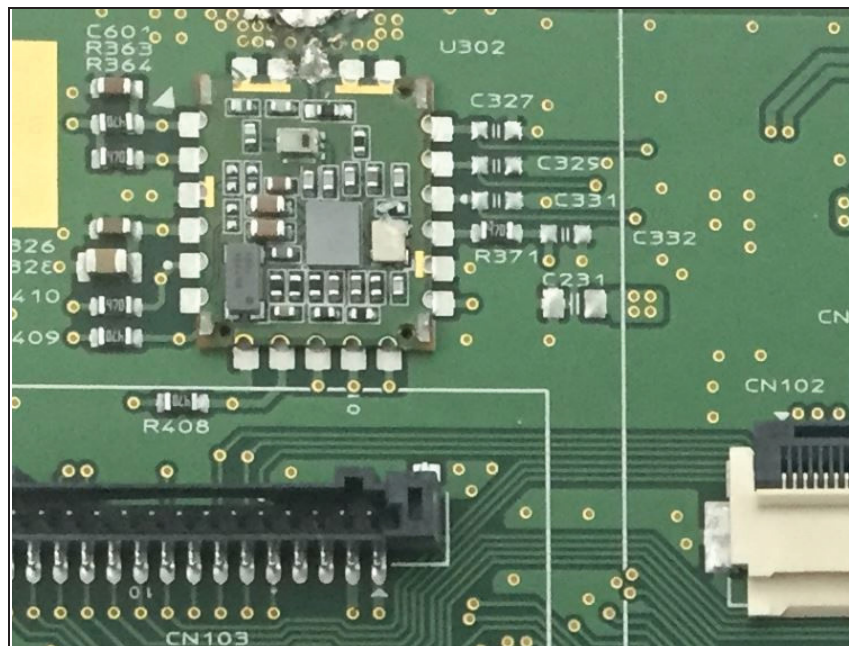
Top view of Sub2 PCB



Bottom view of Sub2 PCB



View of Bluetooth Module



View of antenna

