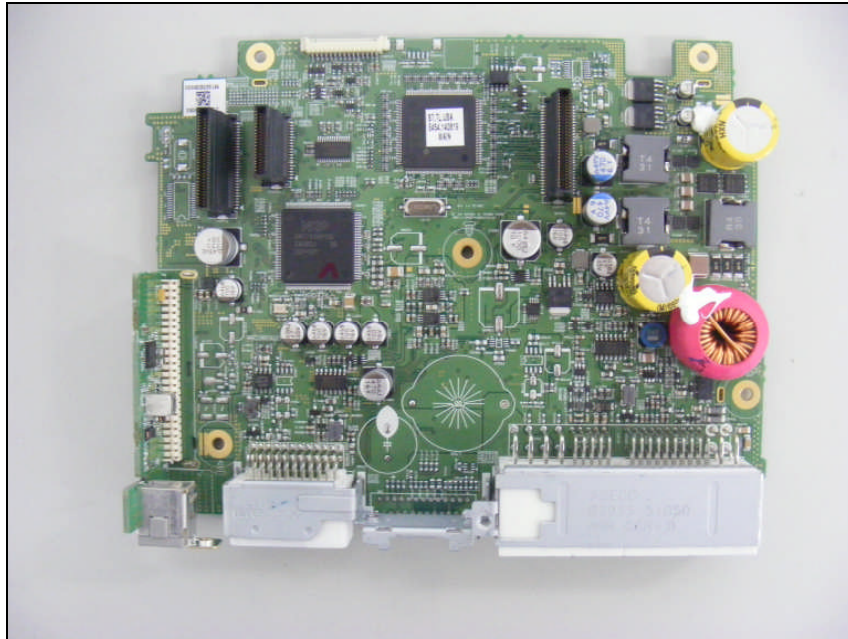


# **Internal photos of EUT**

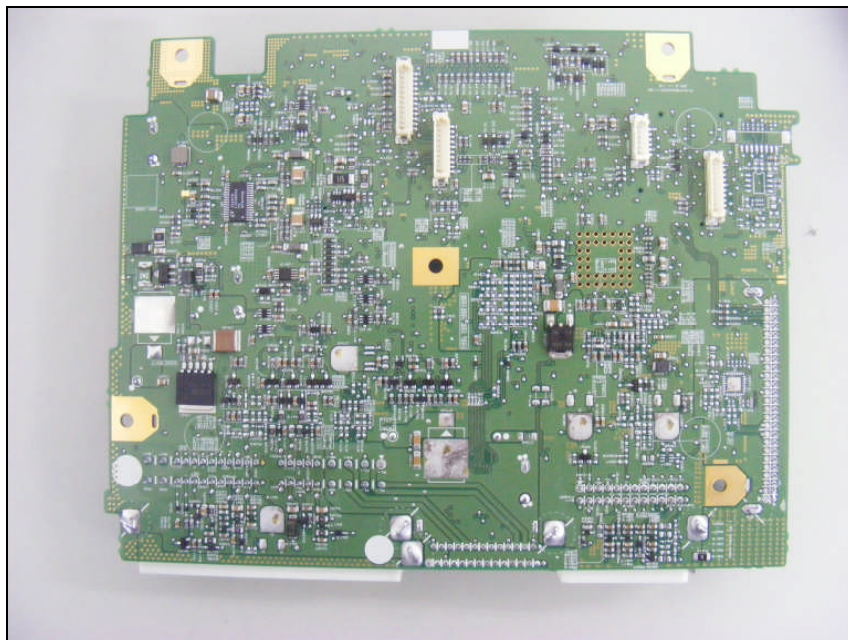
## Inner of EUT



***Top view of Main PCB***



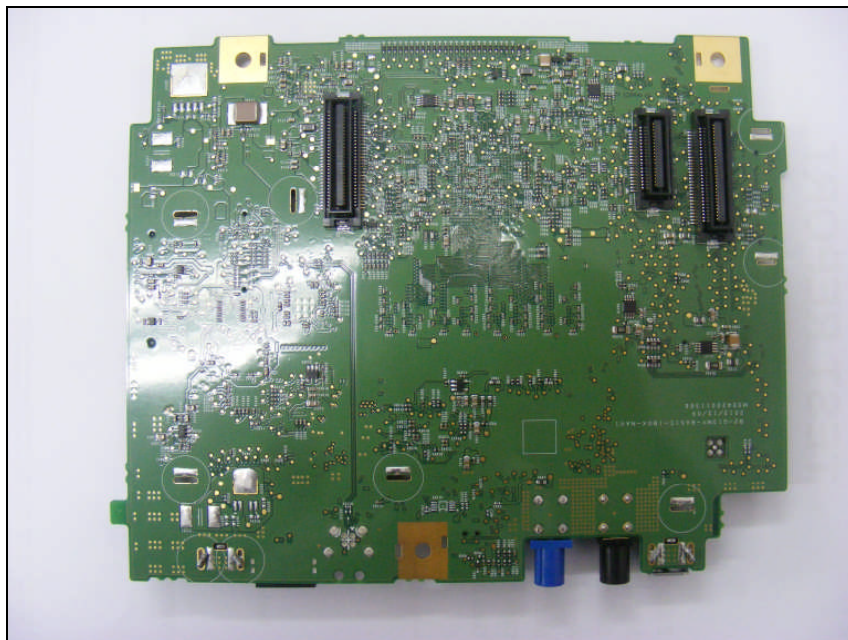
***Bottom view of Main PCB***



**Top view of Sub PCB**

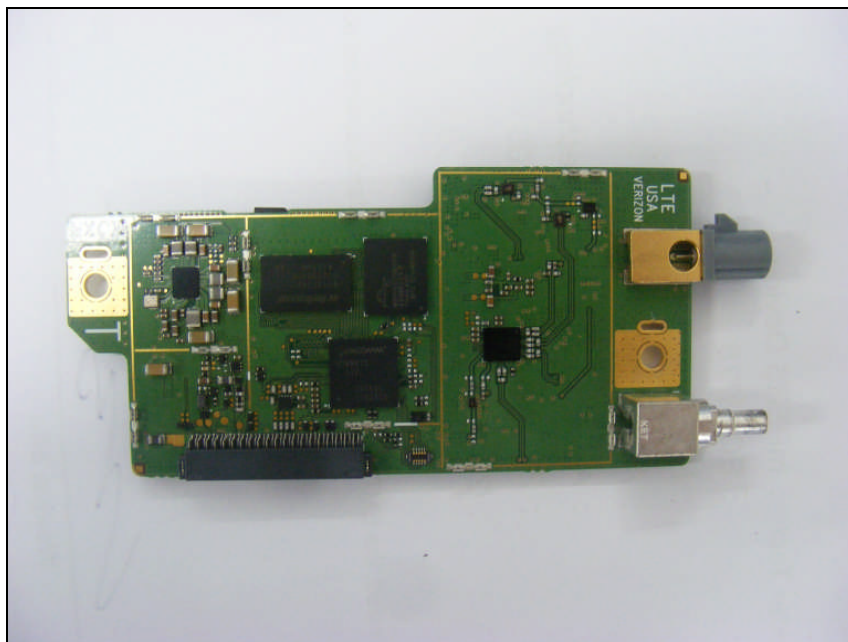


**Bottom view of Sub PCB**

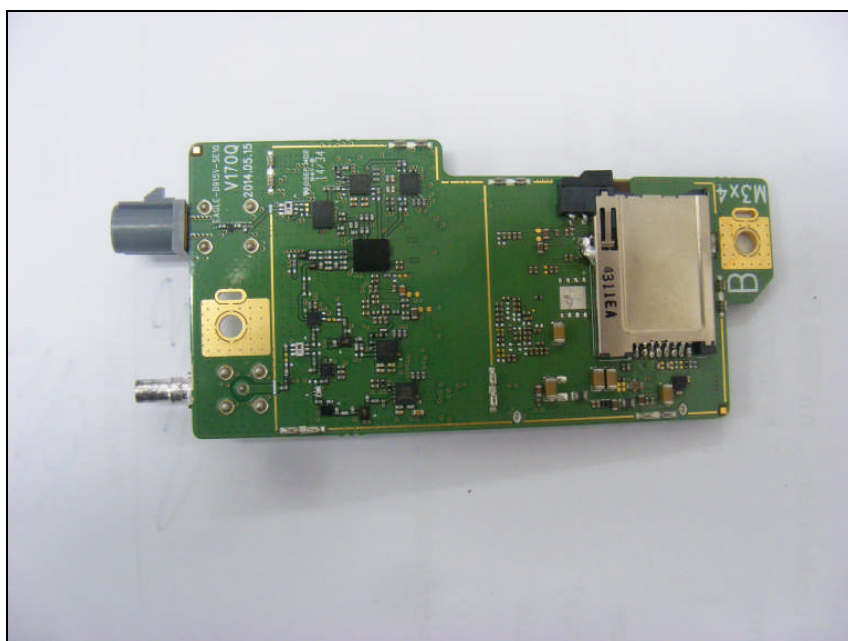




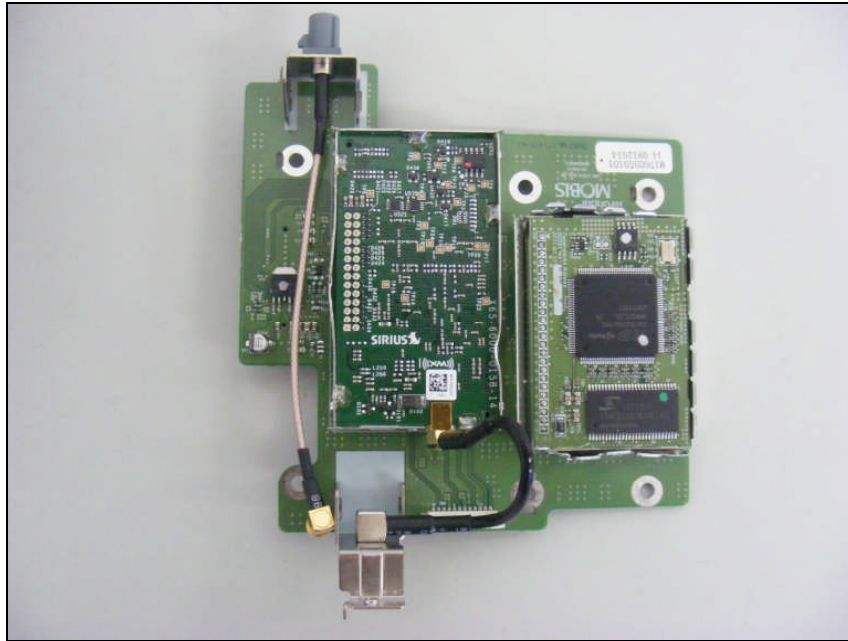
**Top view of Module1**



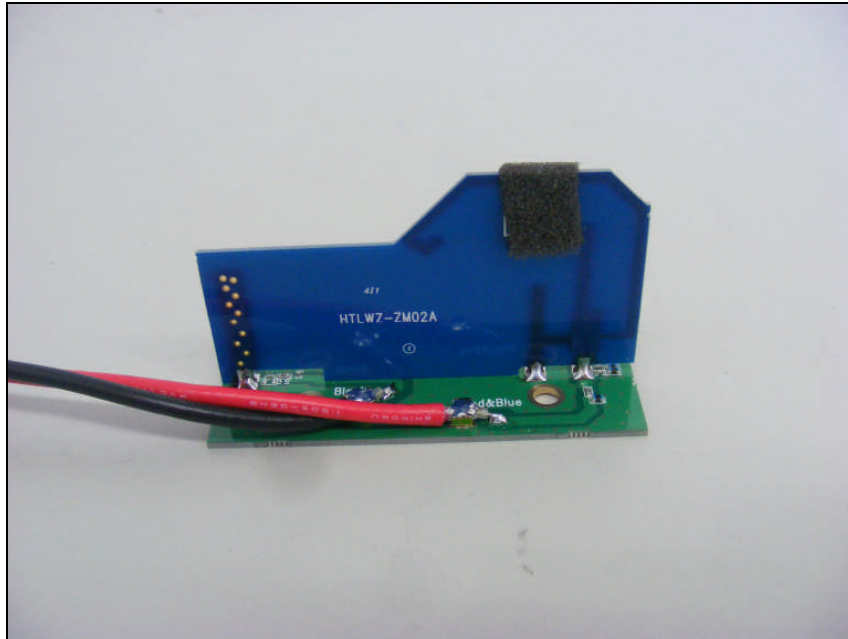
**Bottom view of Module1**



***Top view of Module2***



***View of WLAN / LTE Antenna***



***View of CDMA Antenna***

