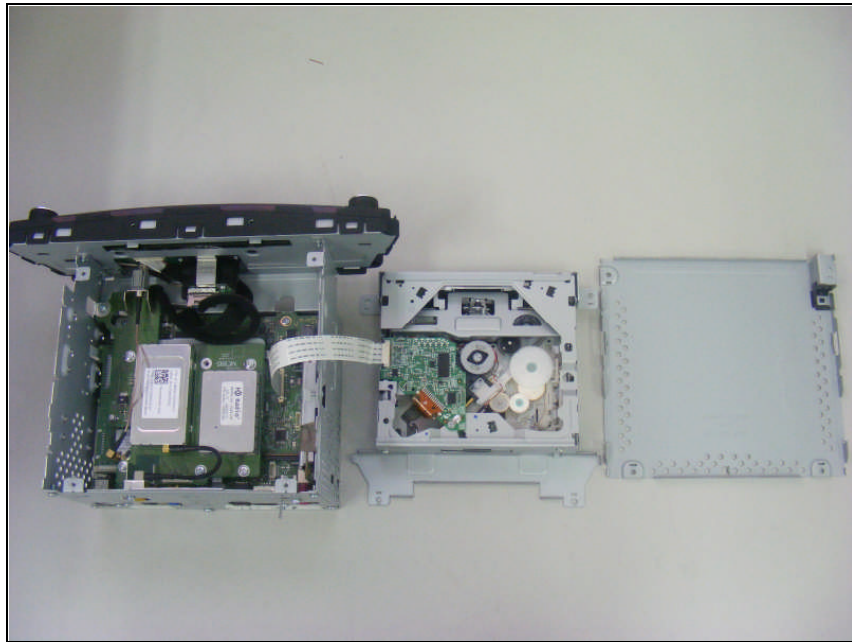
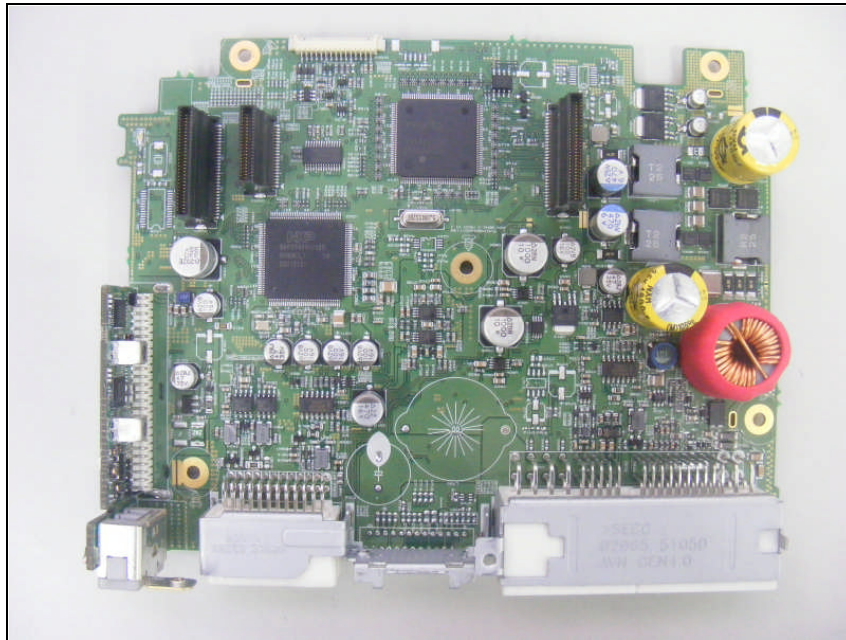


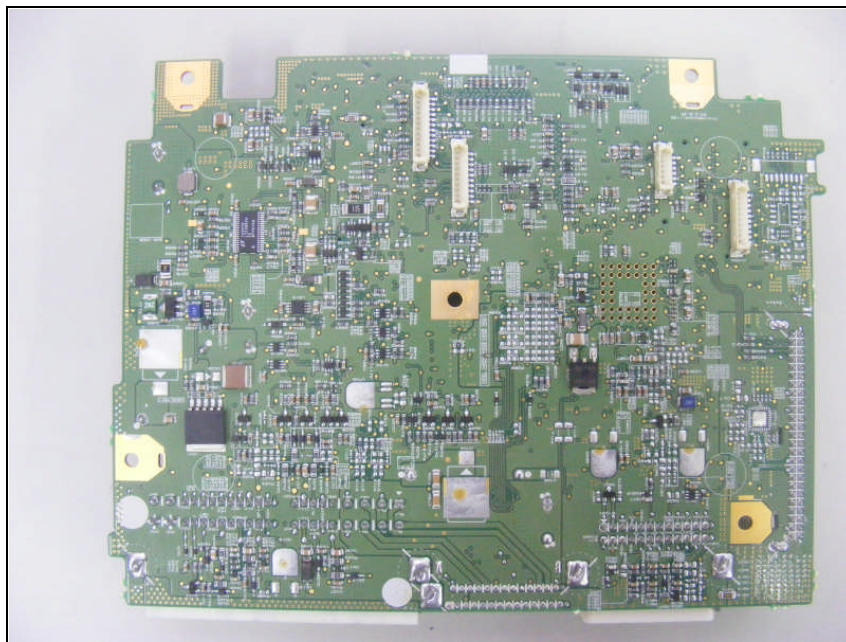
Internal photos of EUT



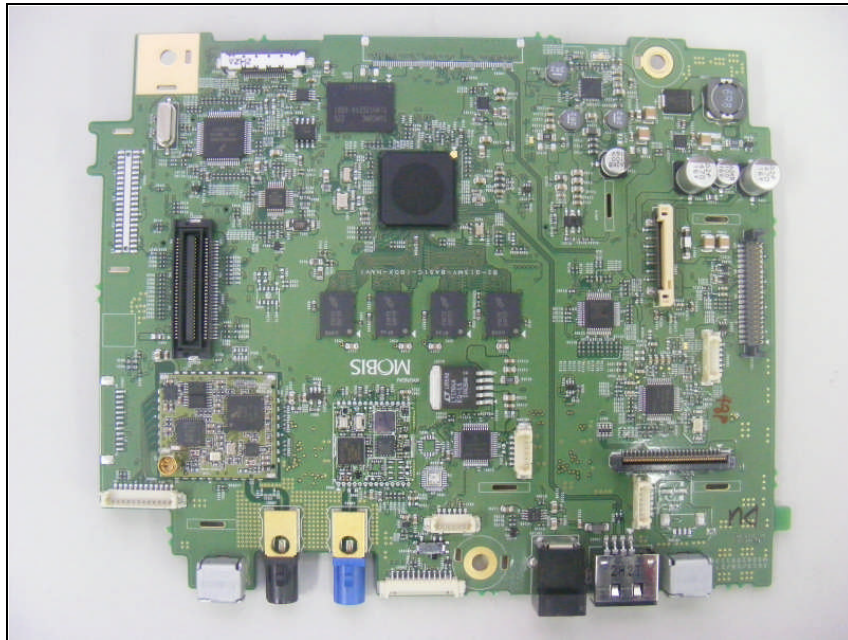
Top view of Main PCB1



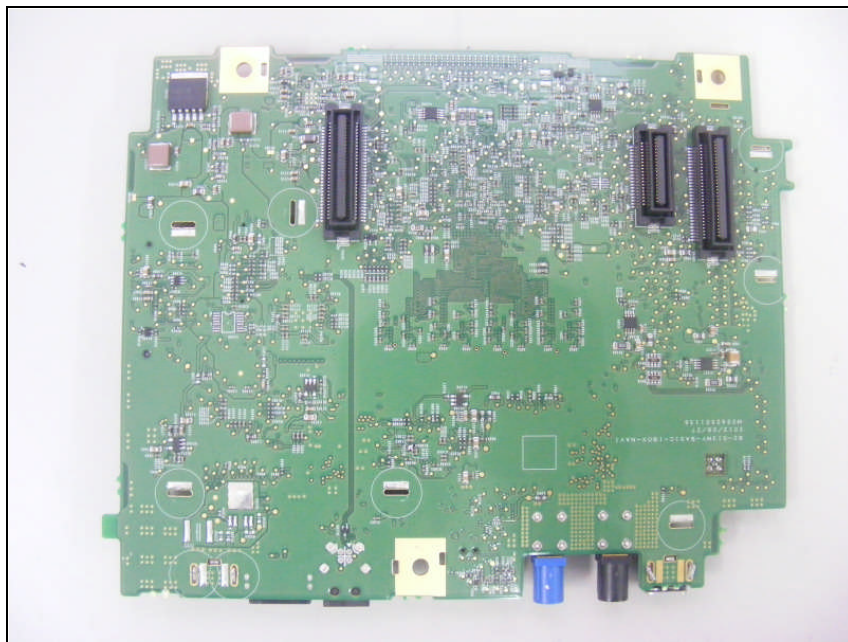
Bottom view of Main PCB1



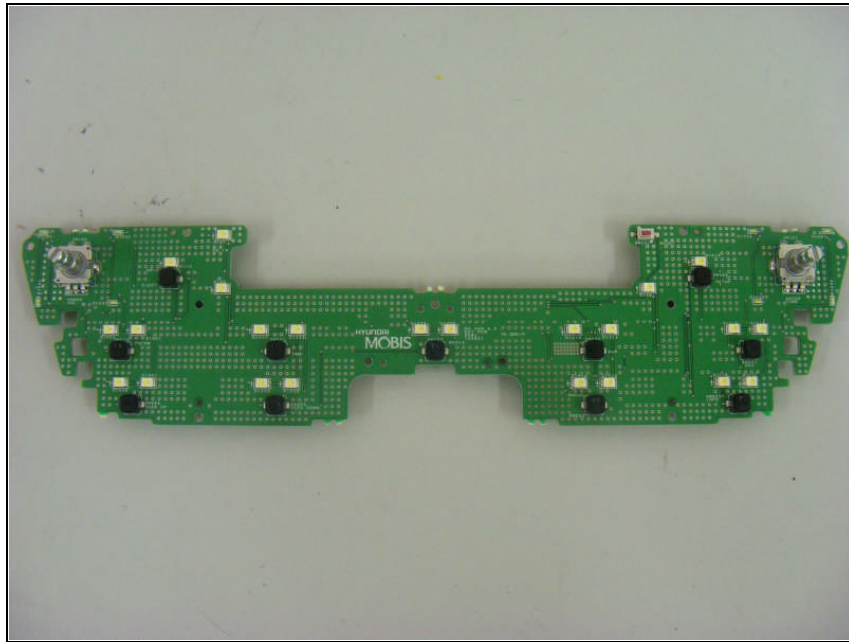
Top view of Main PCB2



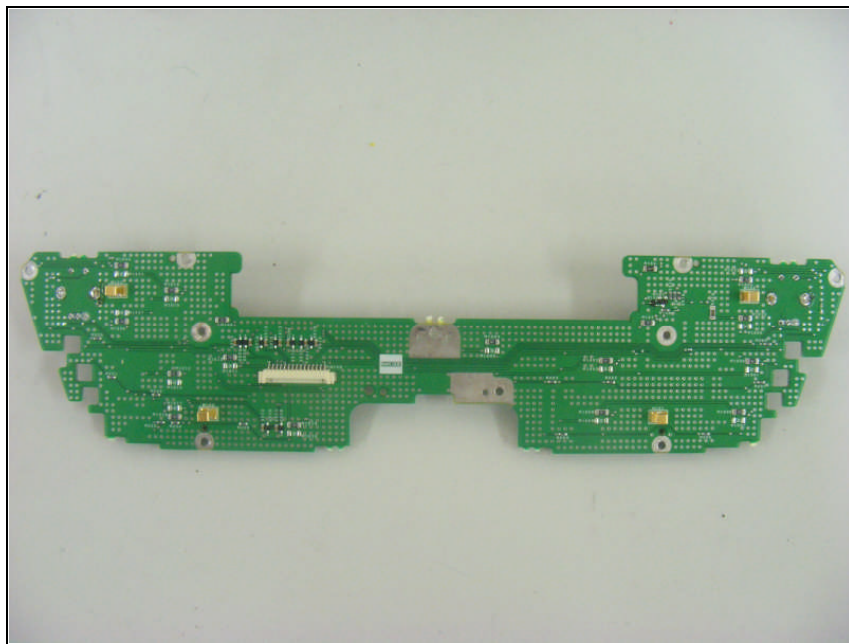
Bottom view of Main PCB2



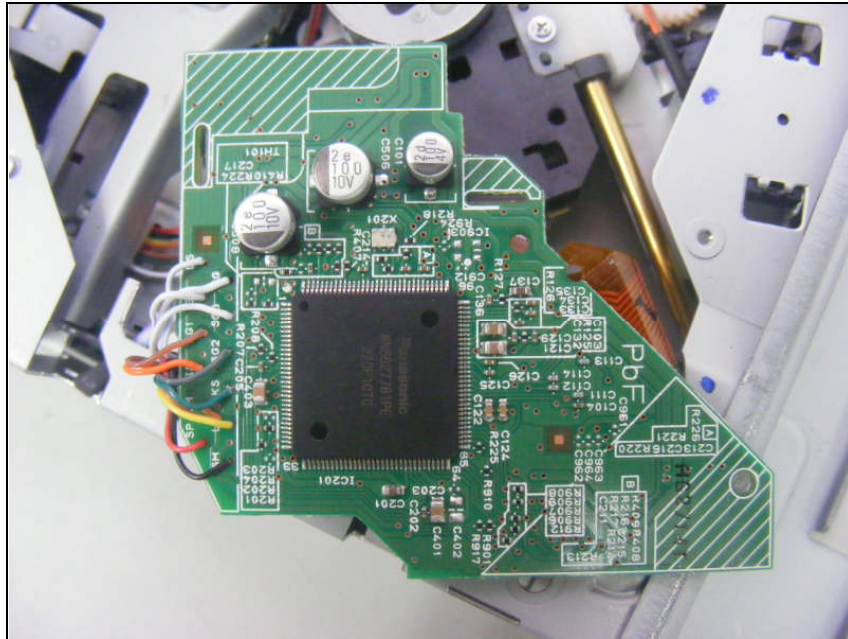
Top view of front PCB



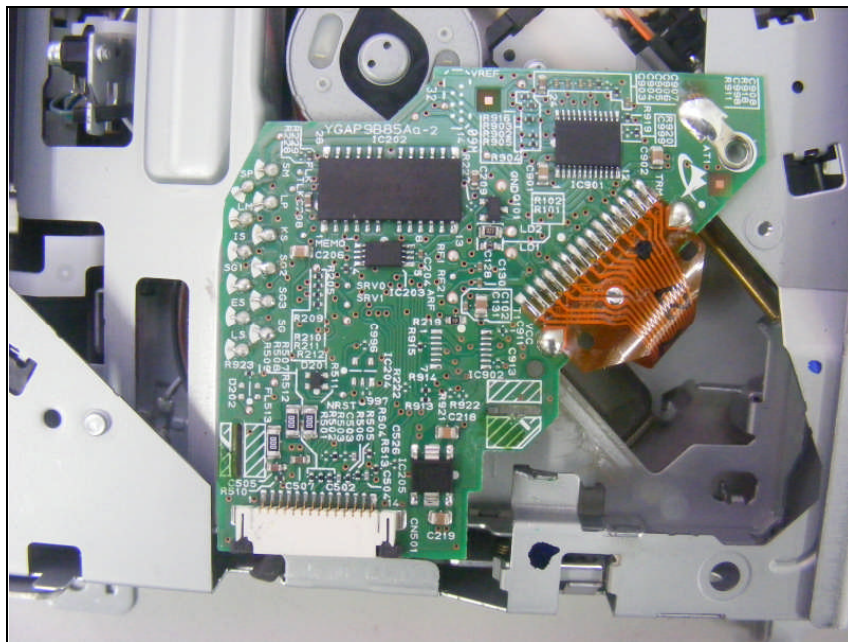
Bottom view of front PCB



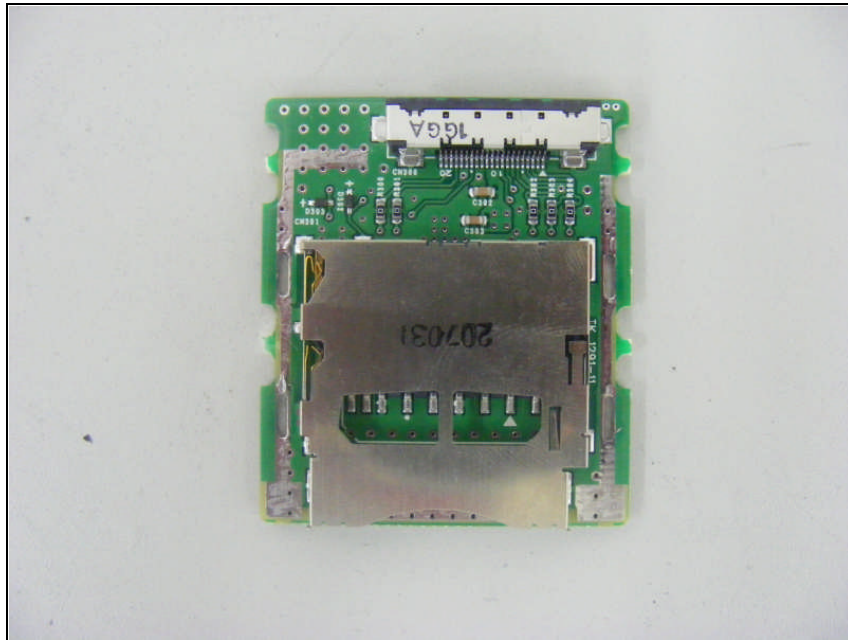
Top view of CD player PCB



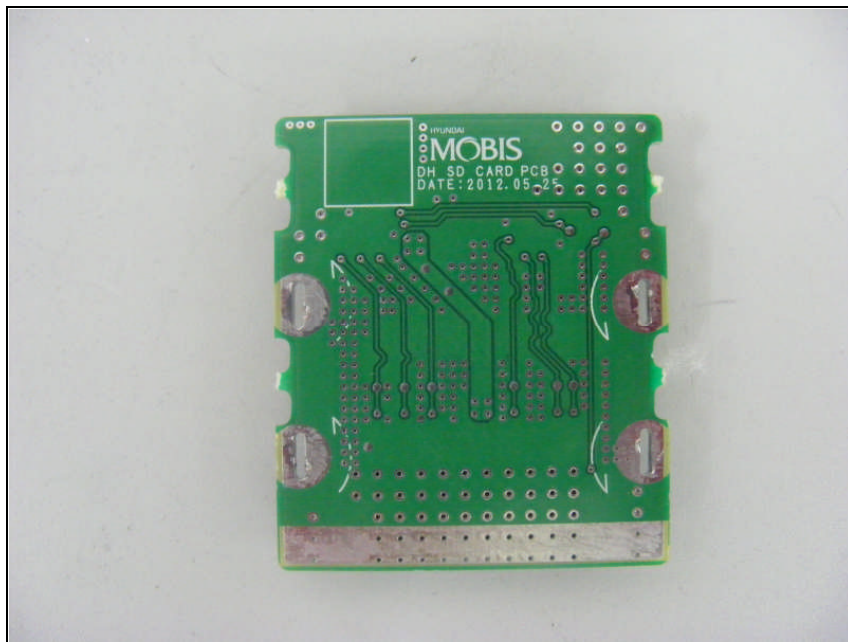
Bottom view of CD player PCB

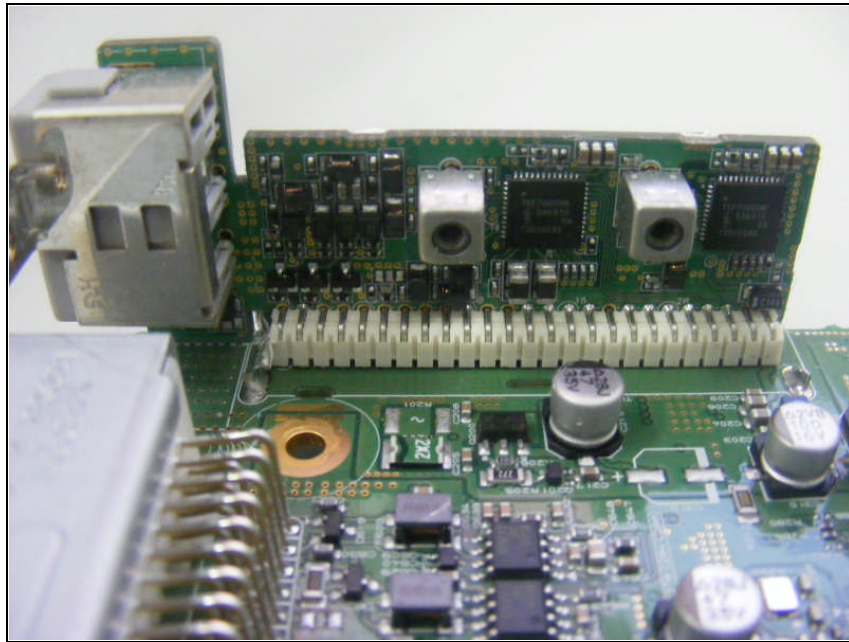


Top view of SD card PCB

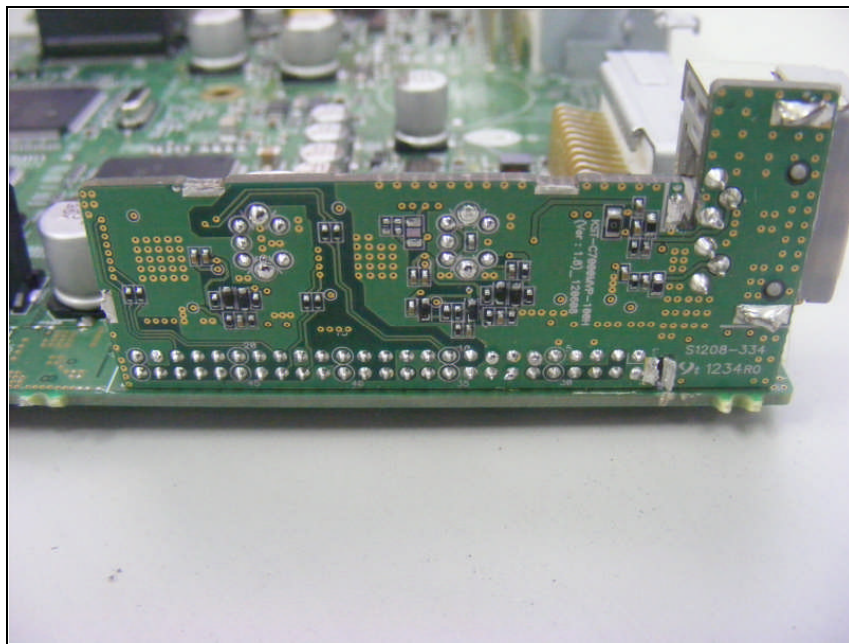


Bottom view of SD card PCB

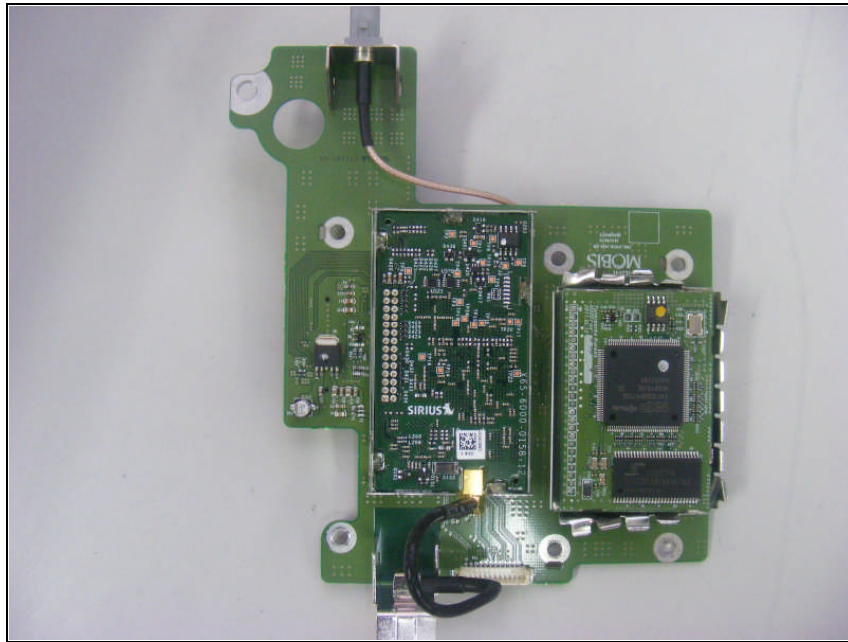




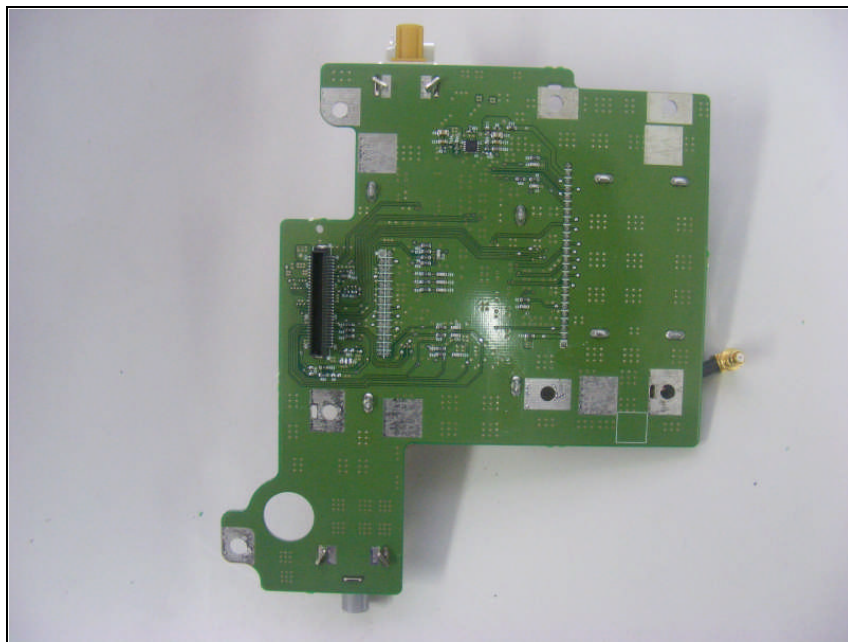
Bottom view of Sub PCB1



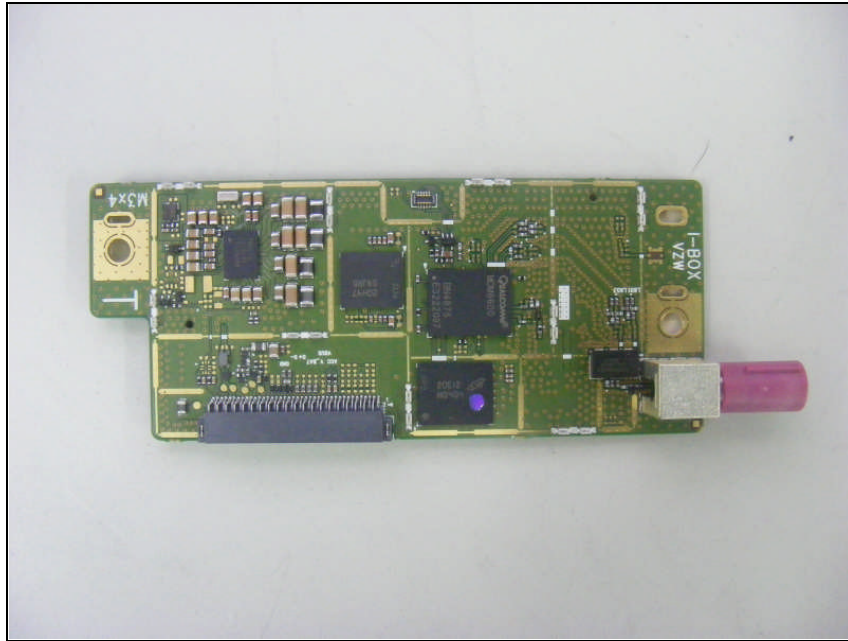
Top view of Sub PCB2



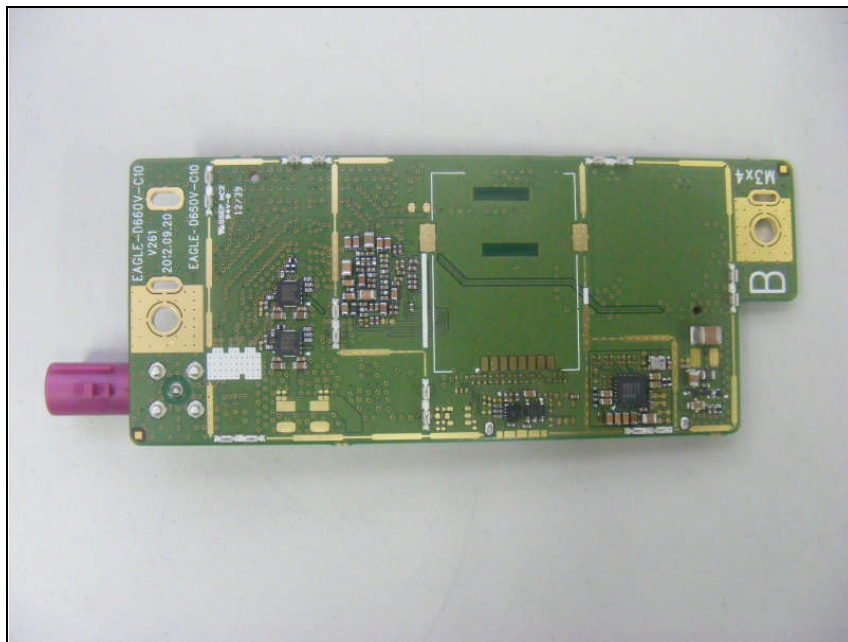
Bottom view of Sub PCB2



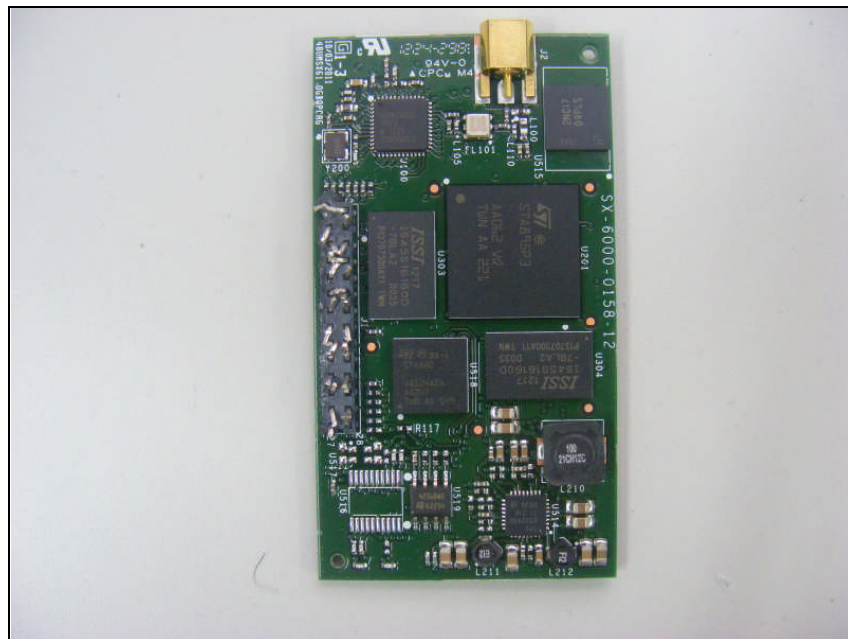
Top view of module PCB1



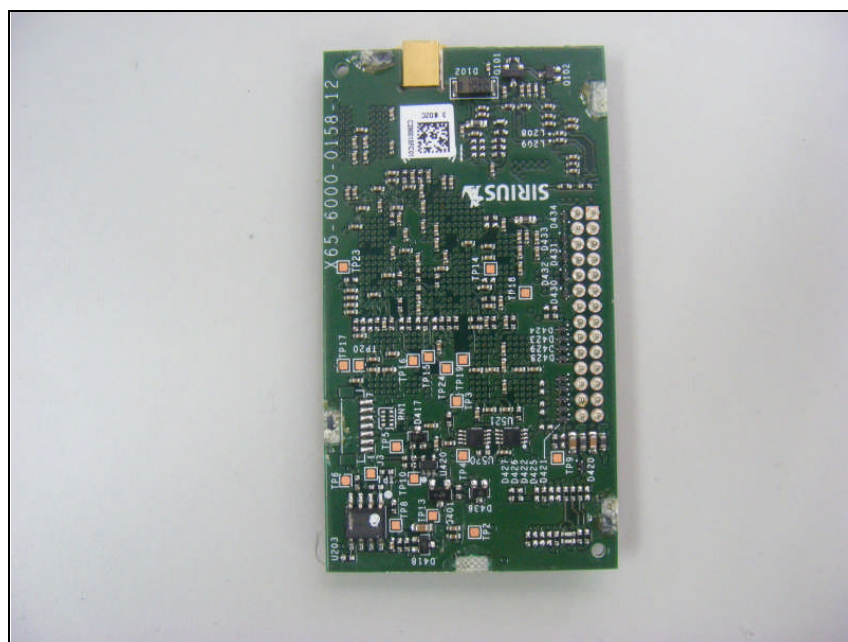
Bottom view of module PCB1



Top view of module PCB2



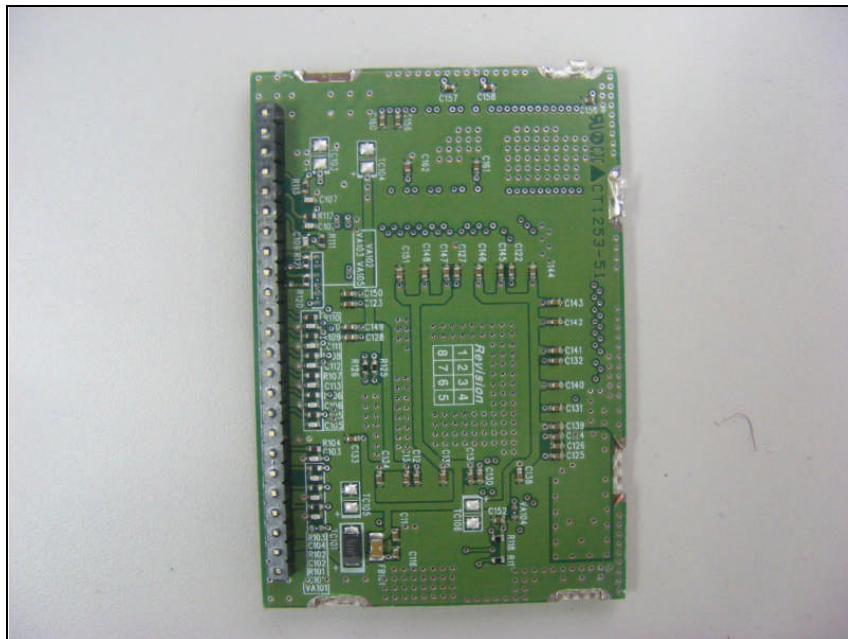
Bottom view of module PCB2



Top view of module PCB3



Bottom view of module PCB3



View of BT Antenna

BT Antenna

