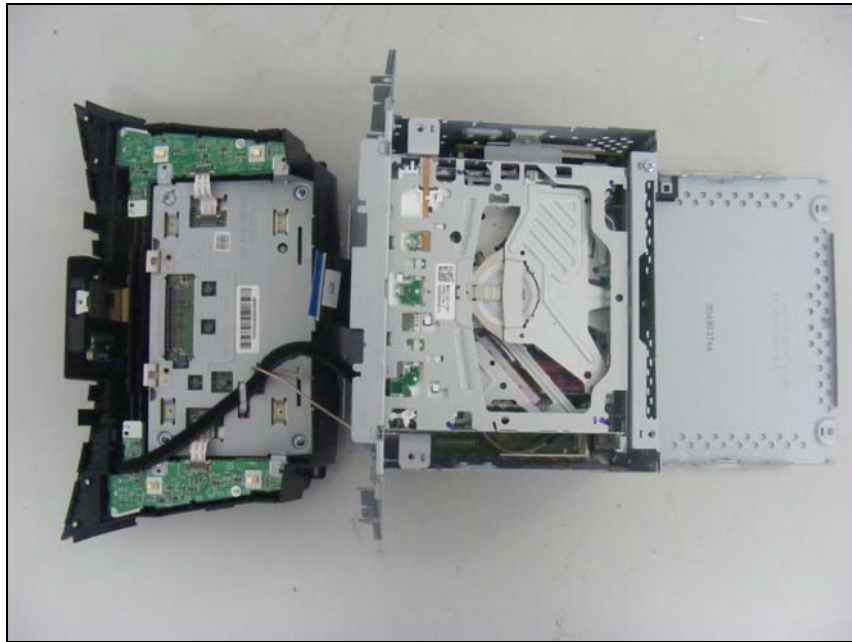


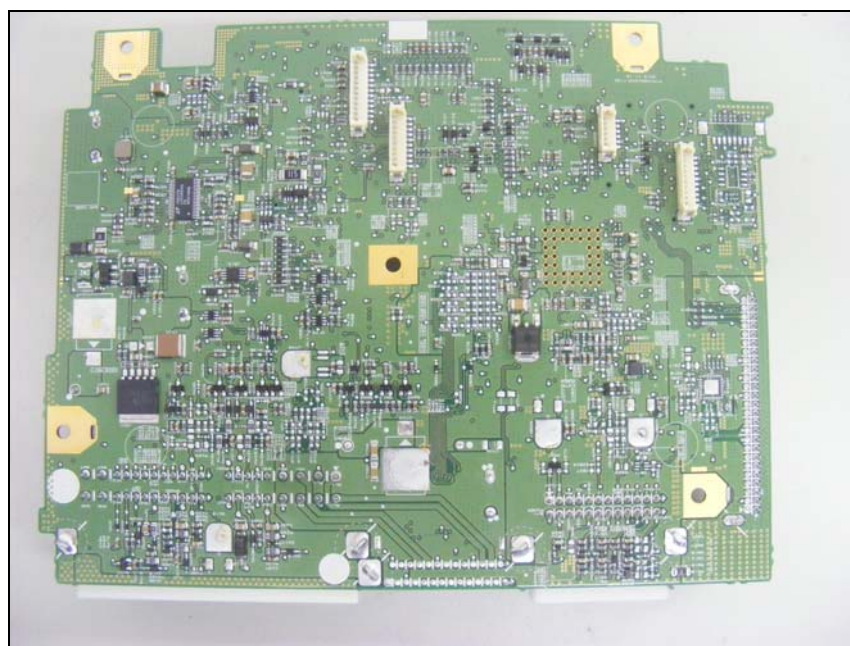
Internal photos of EUT



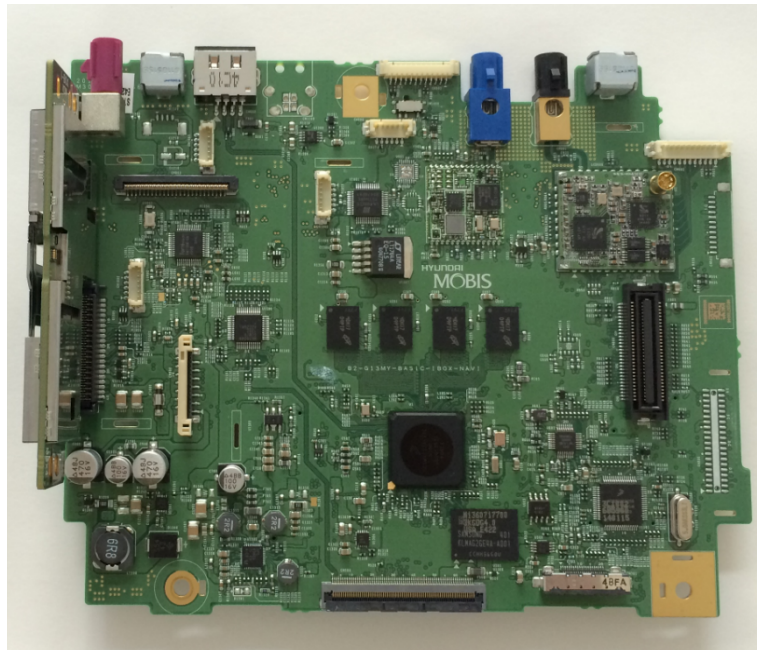
Top view of Main PCB1



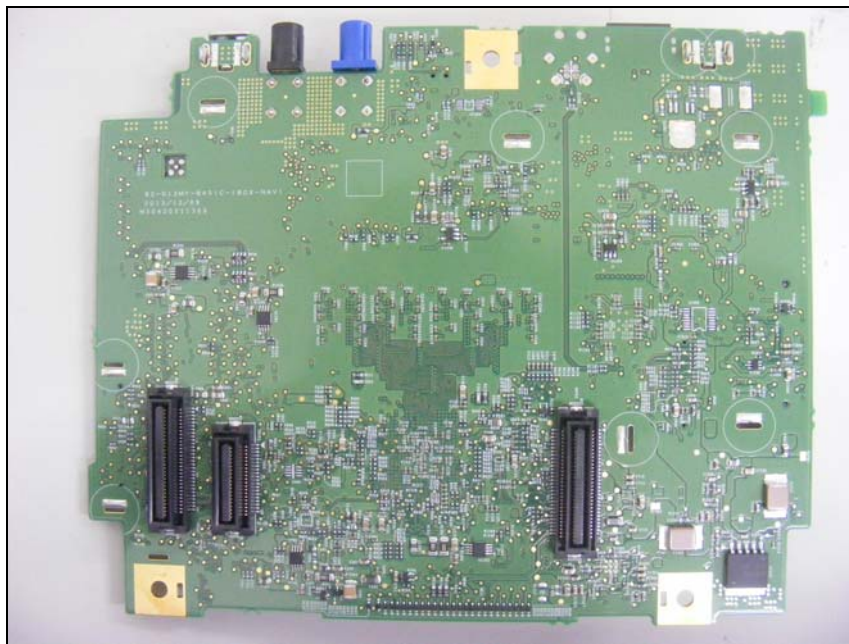
Bottom view of Main PCB1



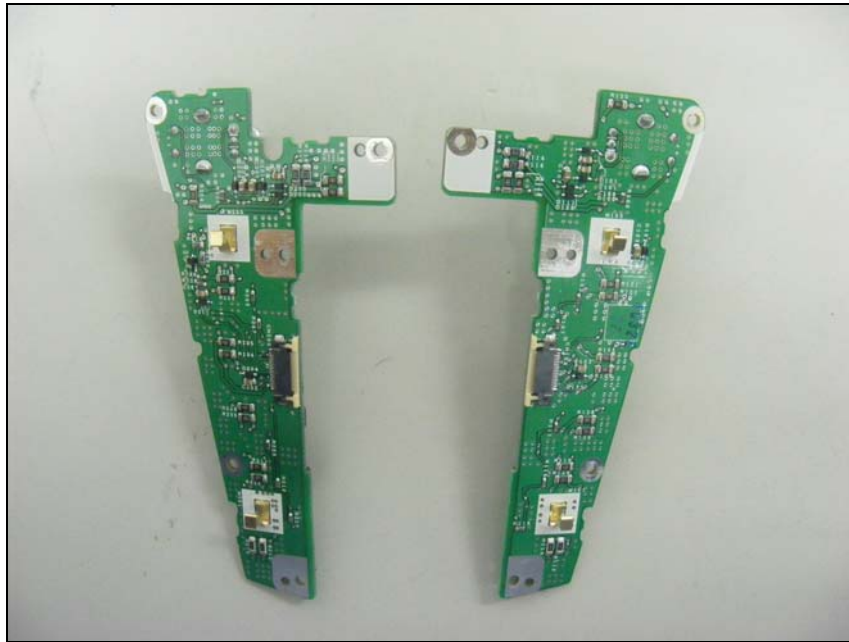
Top view of Main PCB2



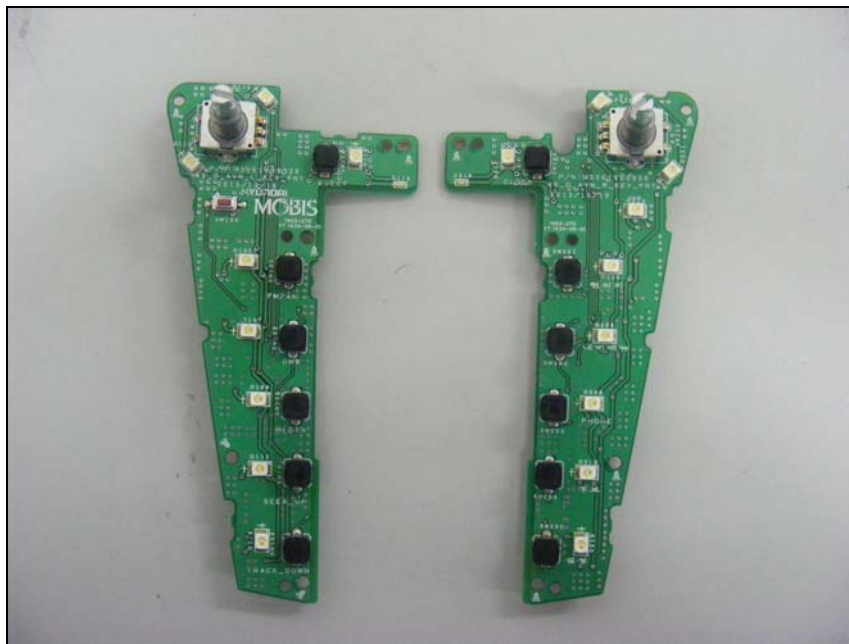
Bottom view of Main PCB2



Top view of Keypad PCB1



Top view of Keypad PCB1



Top view of CD player PCB



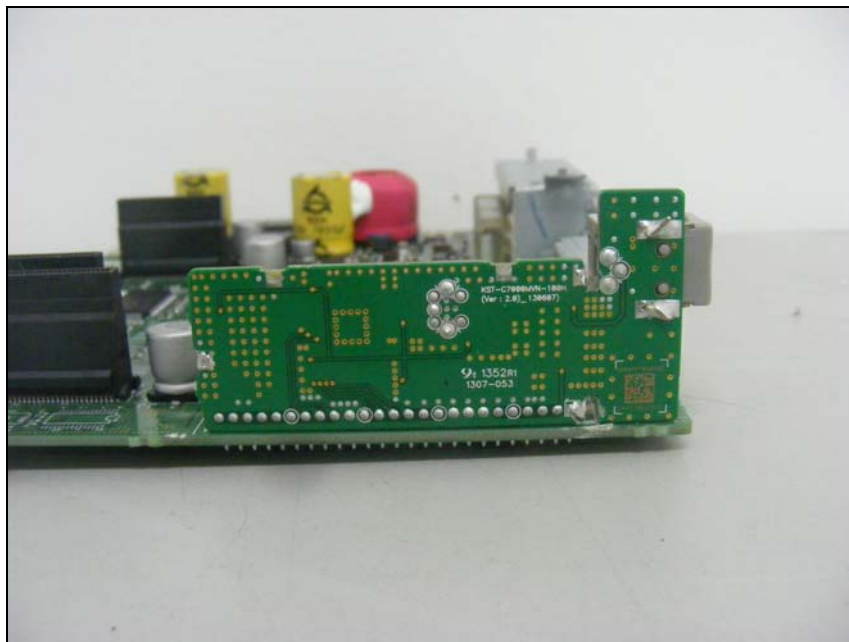
Bottom view of CD player PCB



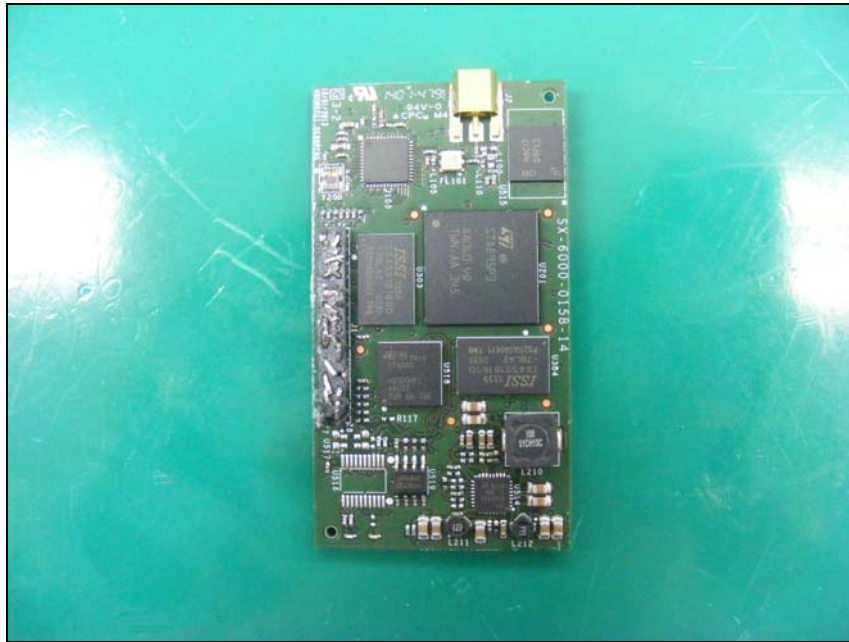
Top view of Sub PCB1



Bottom view of Sub PCB1



Top view of Sub PCB2



Bottom view of Sub PCB2



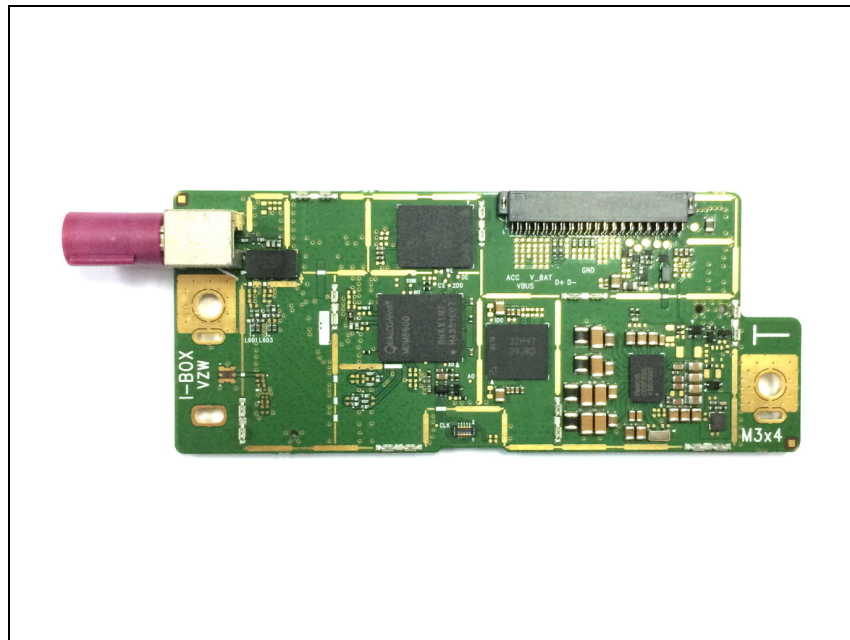
Top view of Sub PCB3



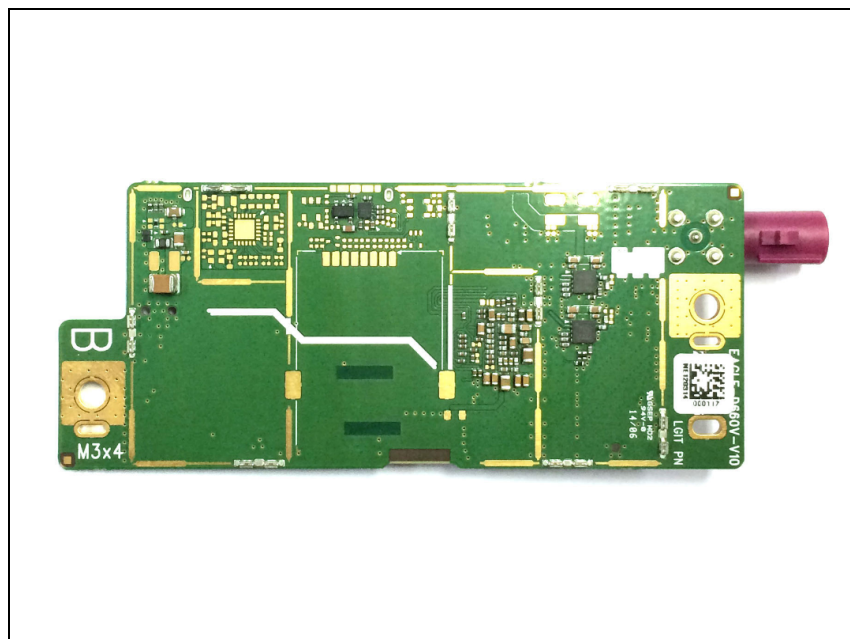
Bottom view of Sub PCB3



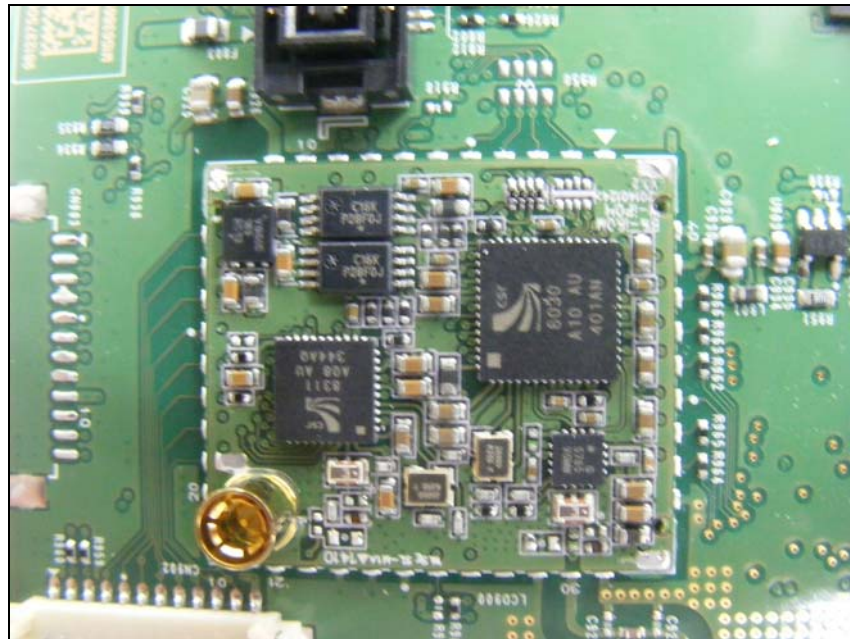
Top view of module PCB1



Bottom view of module PCB1



Top view of module PCB3



View of BT Antenna

