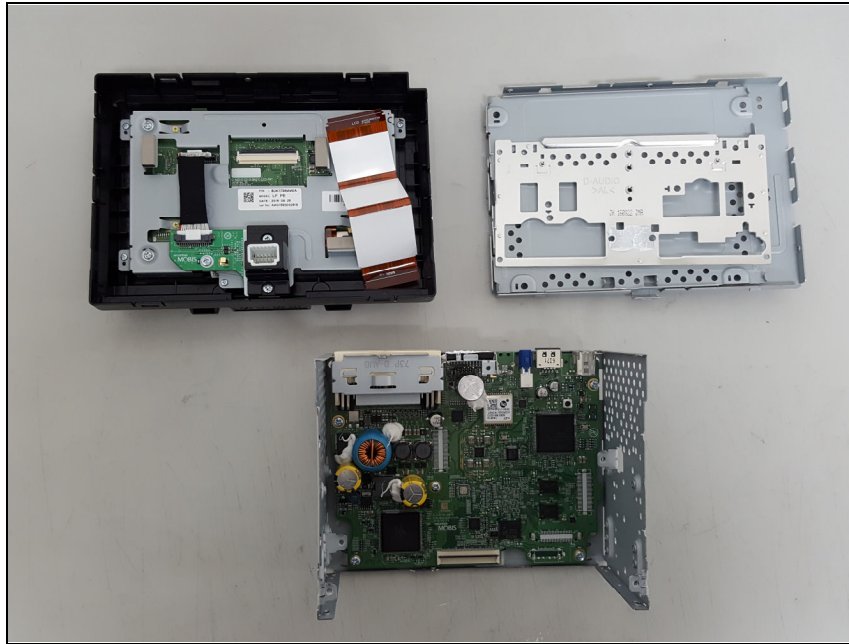
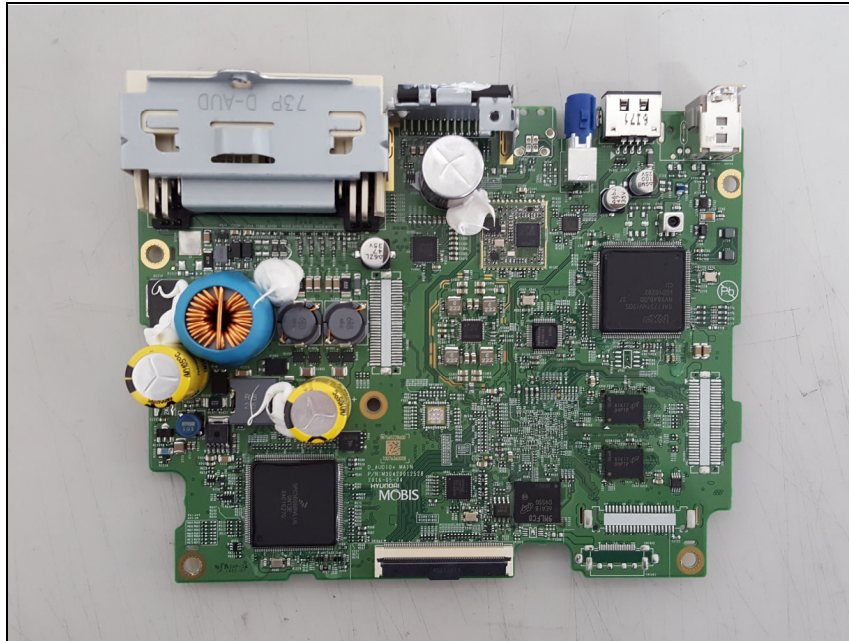


Internal photos of EUT

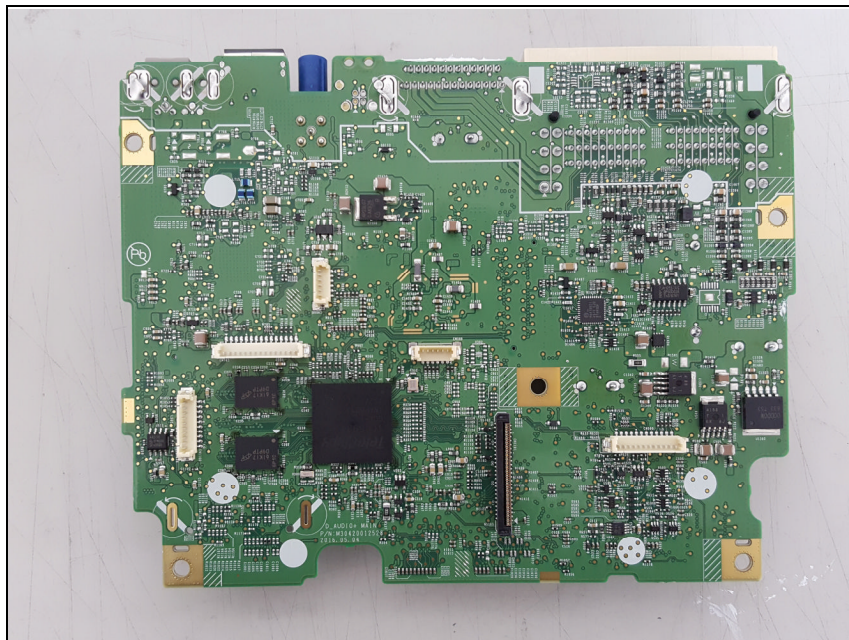
Internal view of EUT



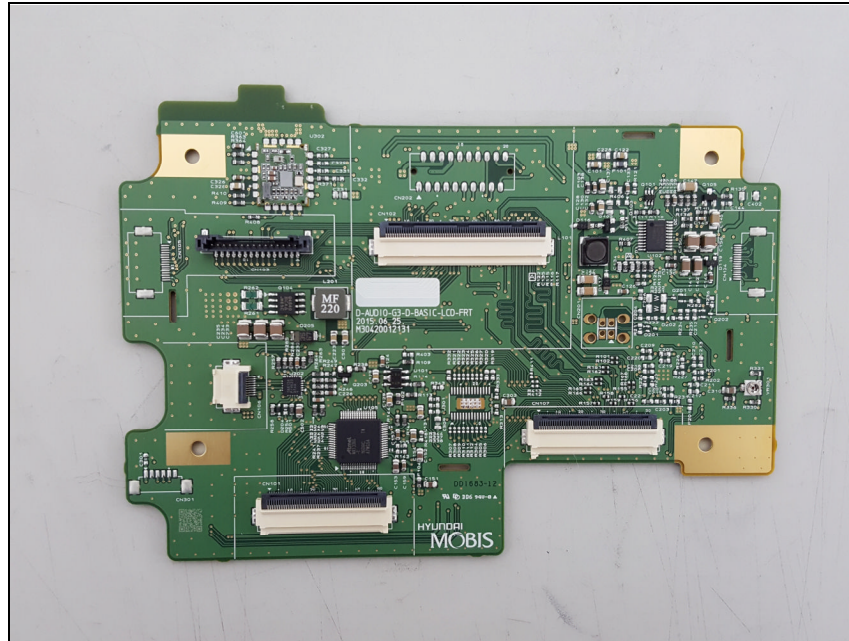
Top view of Main PCB



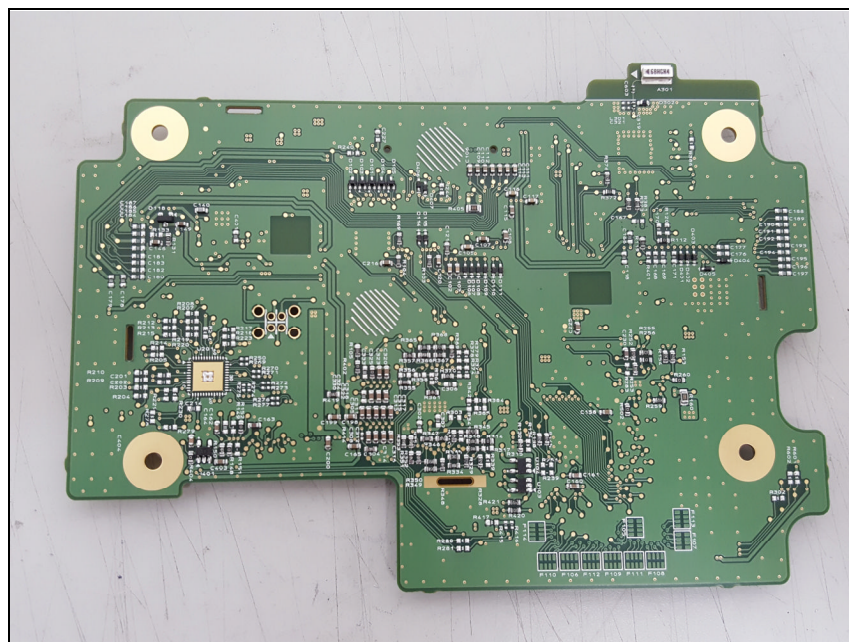
Bottom view of Main PCB



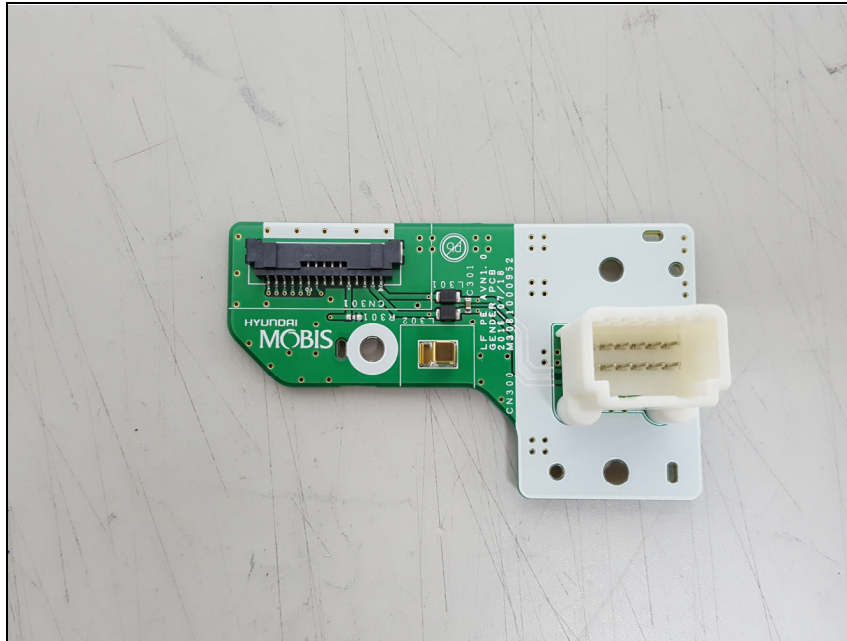
Top view of LCD PCB



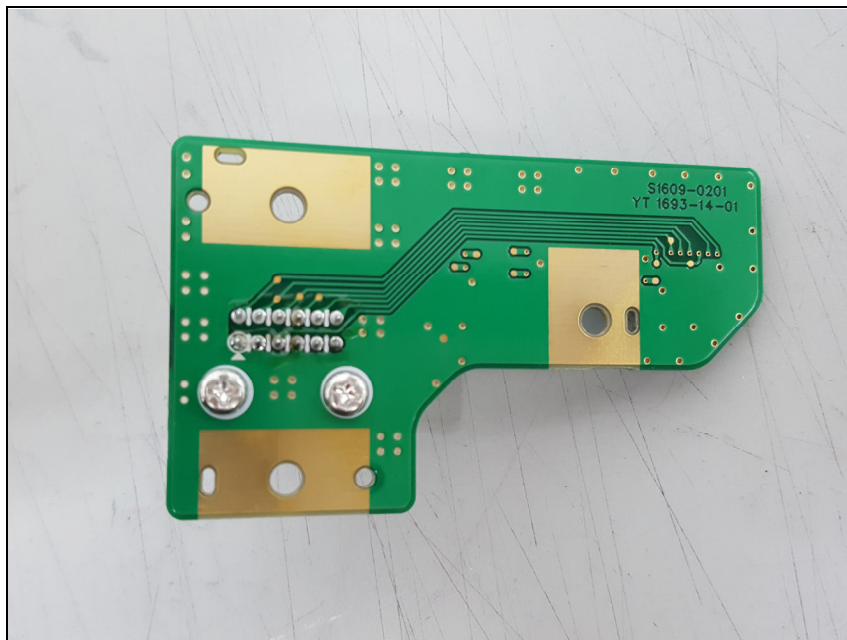
Bottom view of LCD PCB



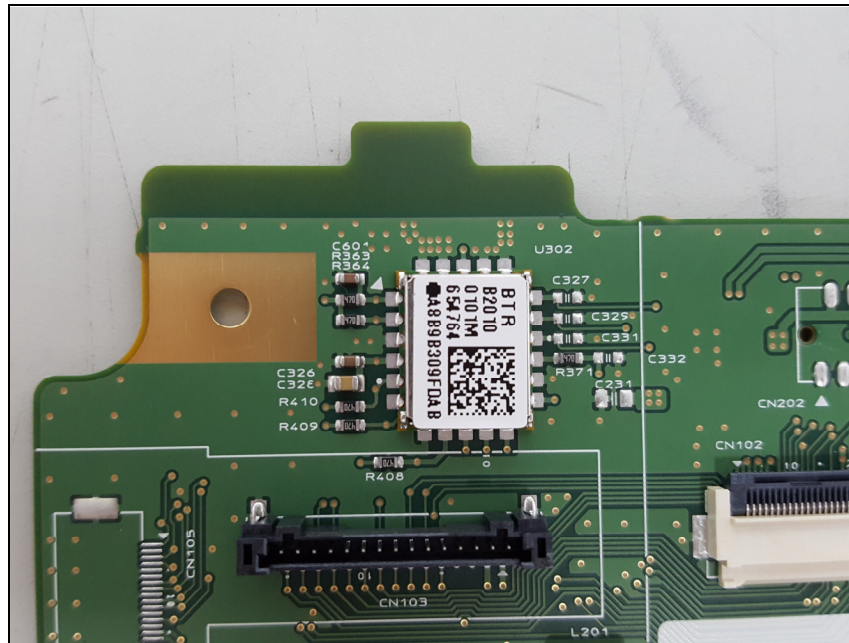
Top view of Sub PCB



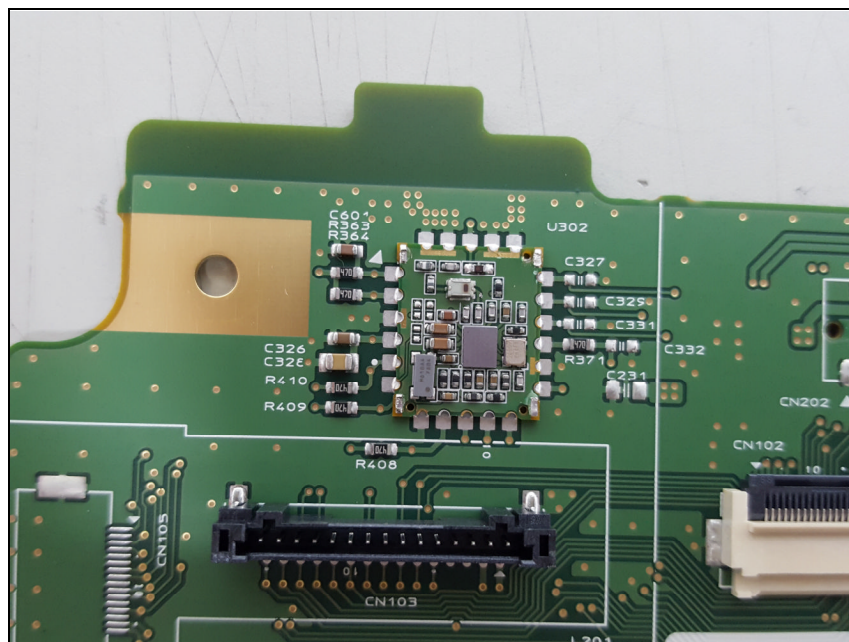
Bottom view of Sub PCB



View of Bluetooth Module(with Shielding)



View of Bluetooth Module(without Shielding)



View of antenna

