

Internal photos of EUT



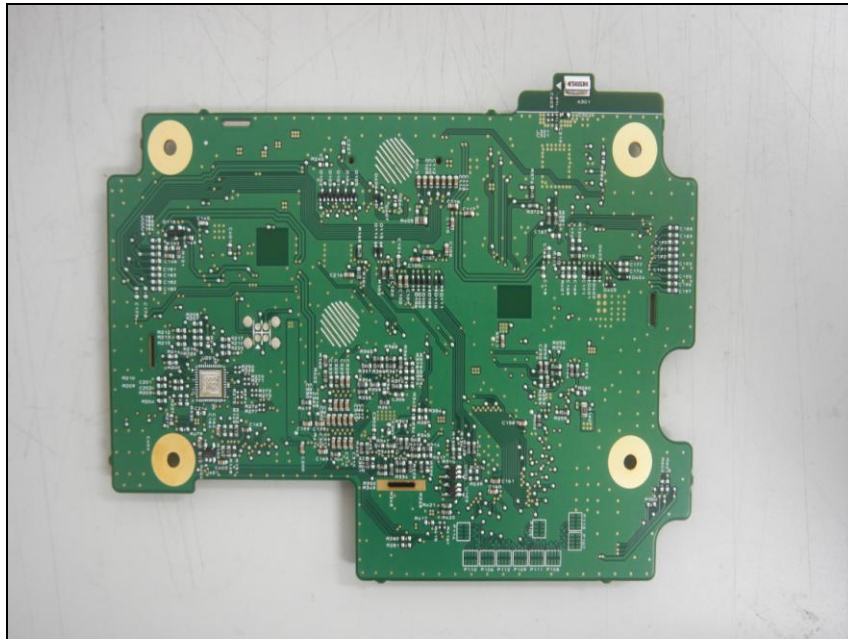
Top view of LCD



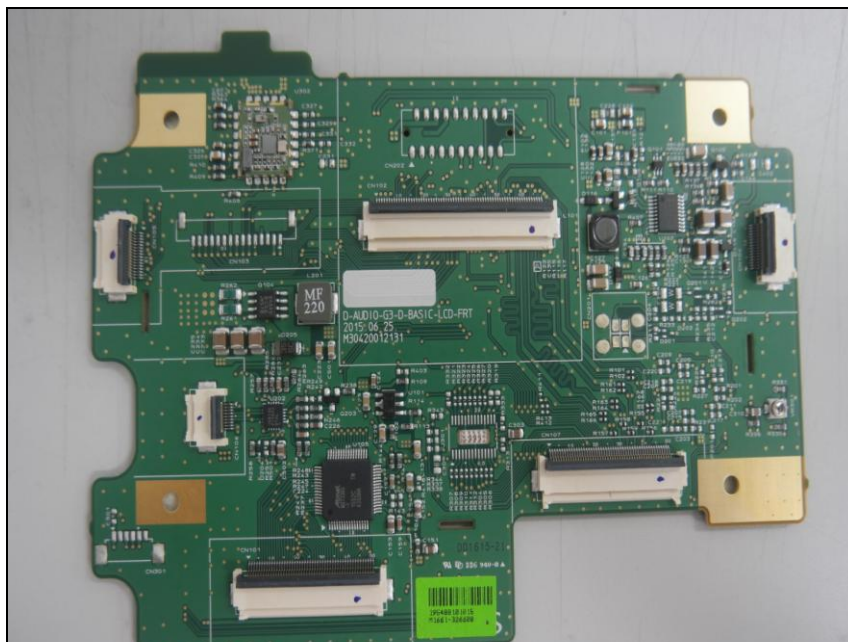
Bottom view of LCD



Top view of LCD PCB



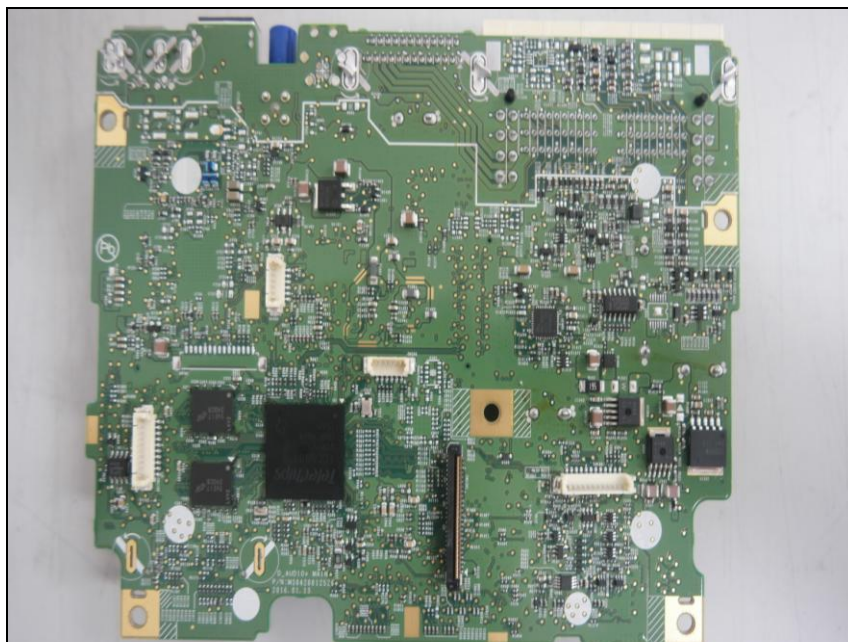
Bottom view of LCD PCB



Top view of Main PCB



Bottom view of Main PCB



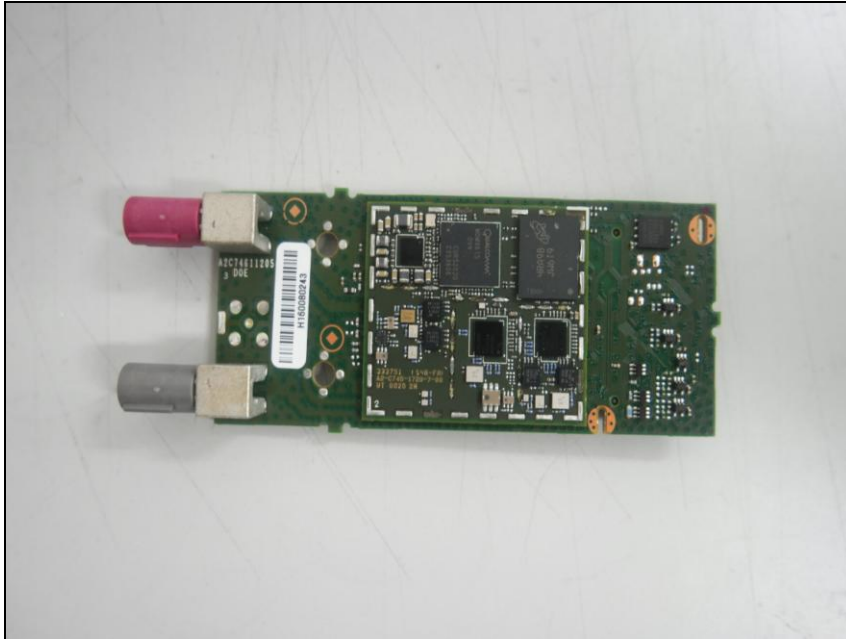
Top view of SUB PCB 1



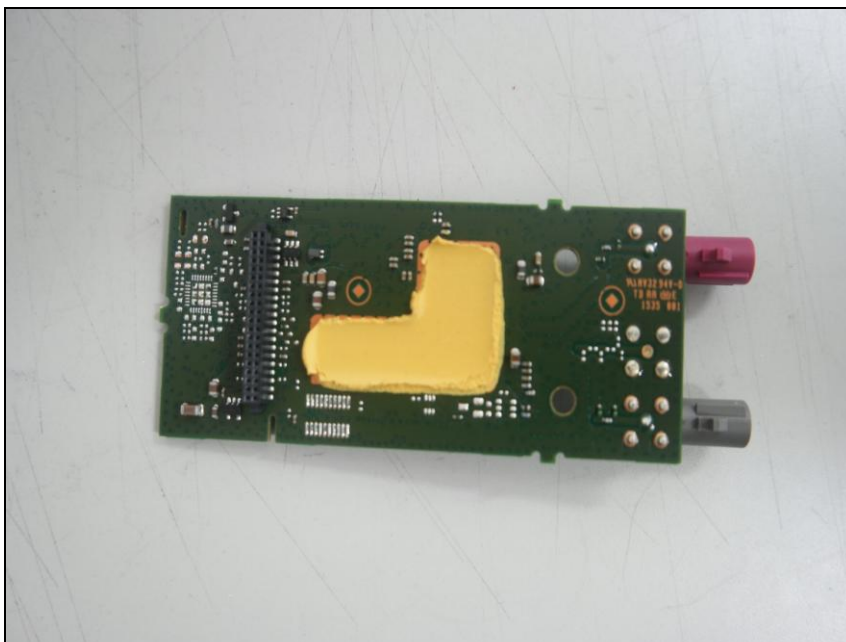
Bottom view of SUB PCB 1



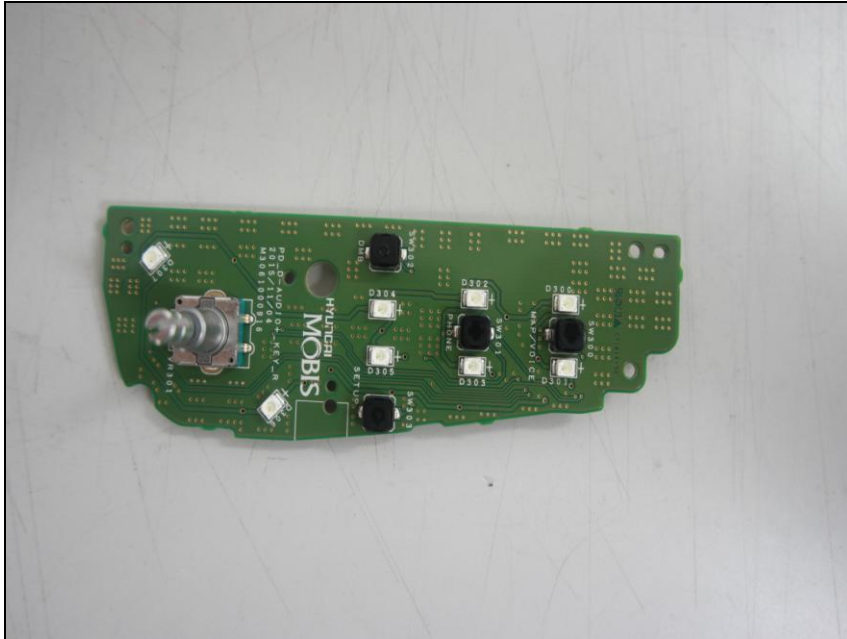
Top view of SUB PCB 2



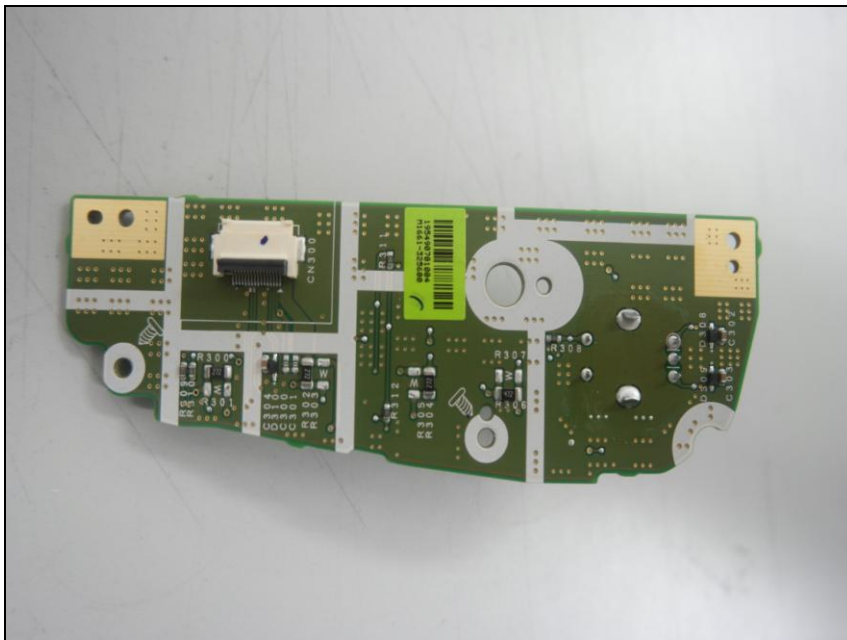
Bottom view of SUB PCB 2



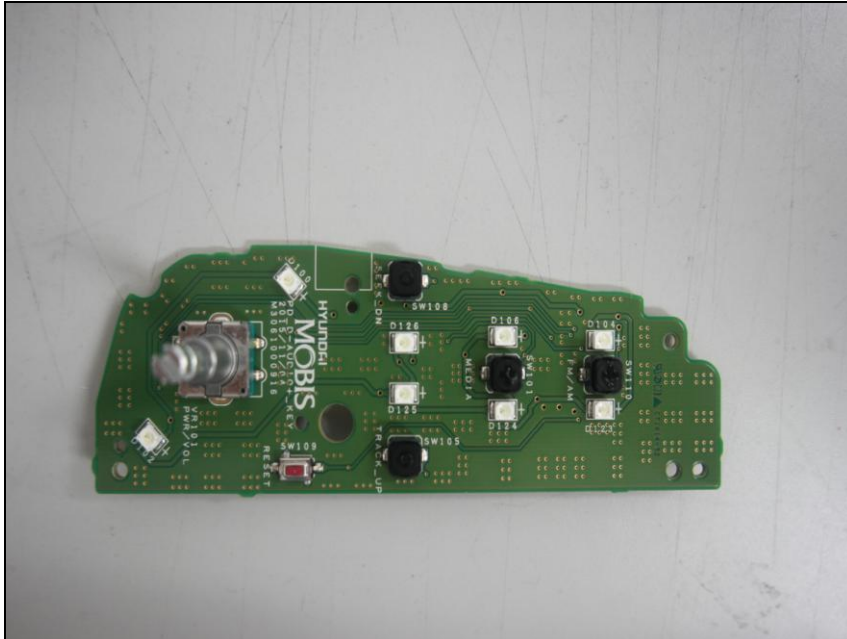
Top view of SUB PCB 3



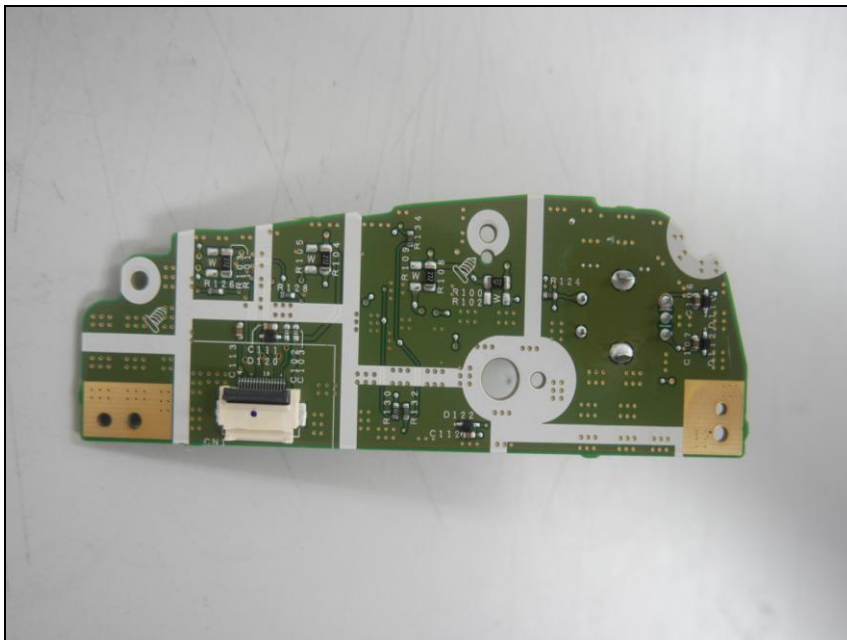
Bottom view of SUB PCB 3



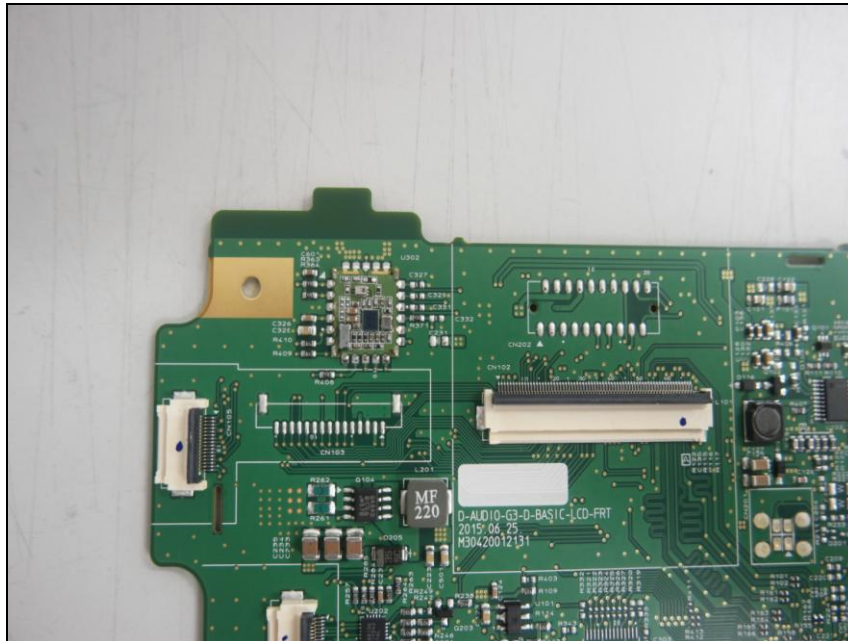
Top view of SUB PCB 4



Bottom view of SUB PCB 4



Top view of Bluetooth module



View of Bluetooth antenna

