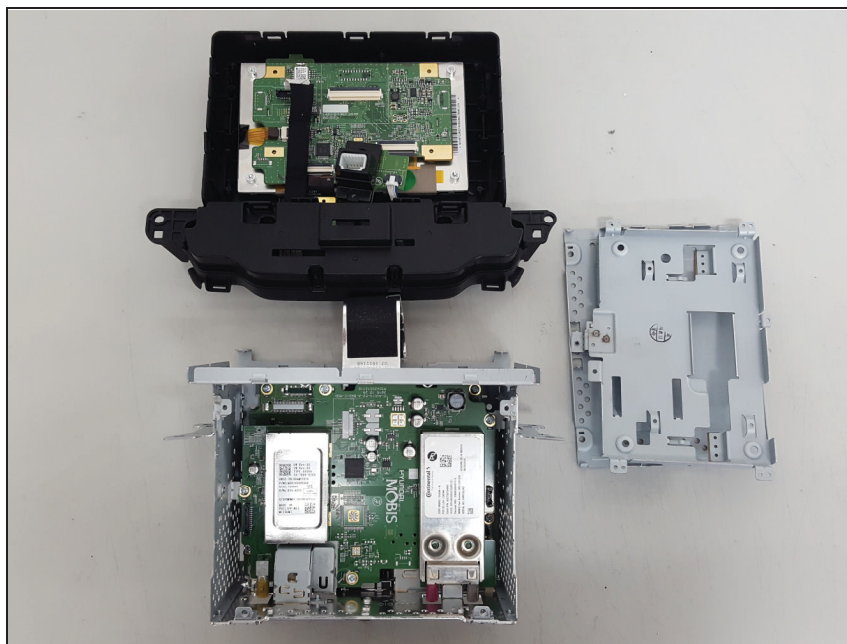
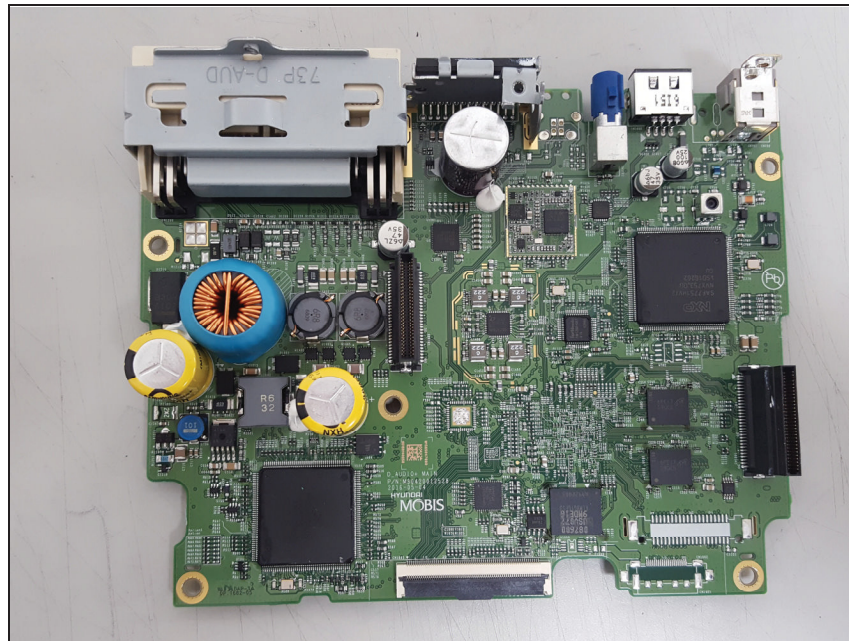


Internal photos of EUT

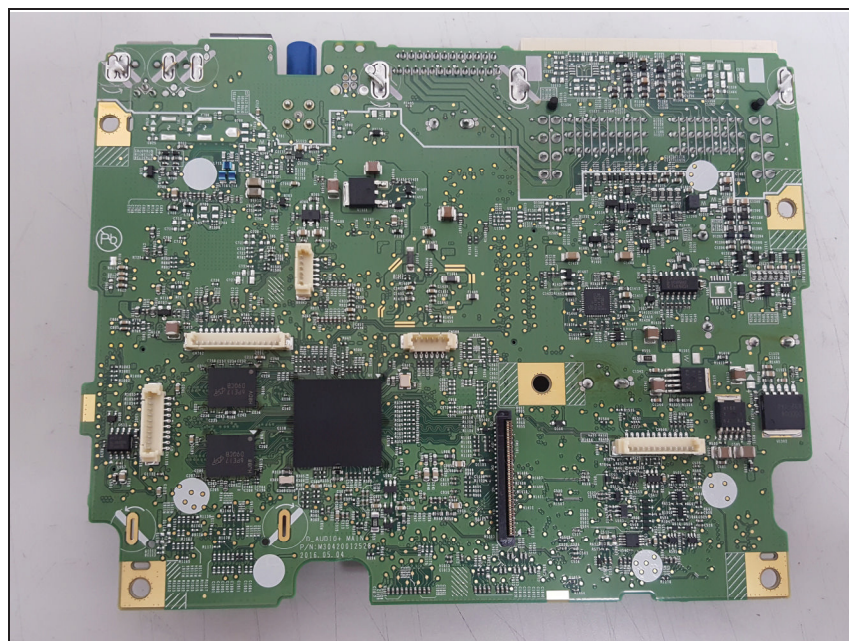
Internal view of EUT



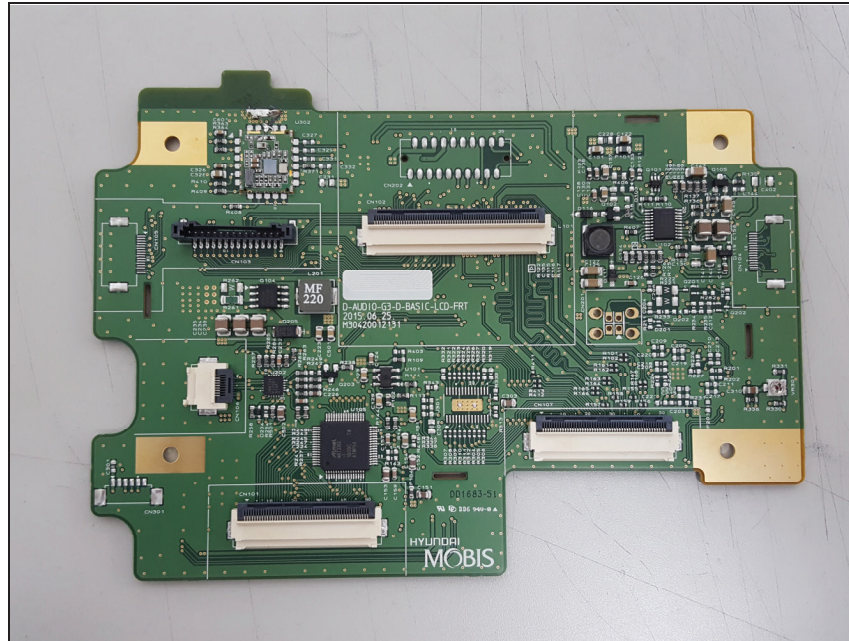
Top view of Main PCB



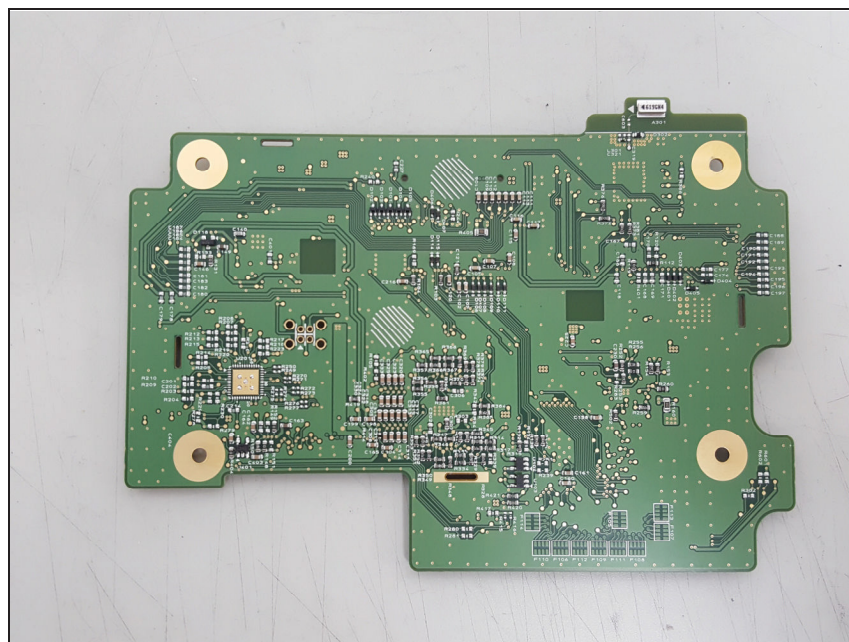
Bottom view of Main PCB



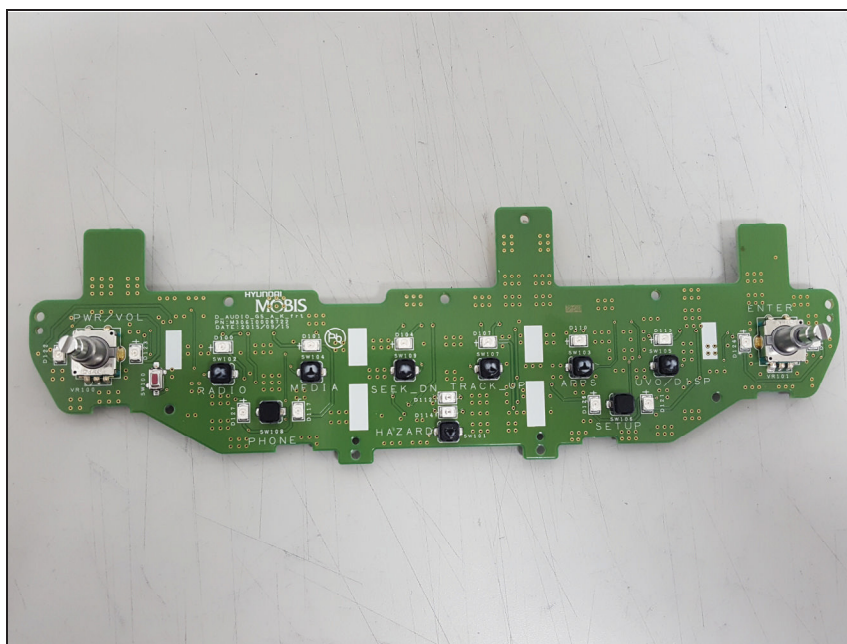
Top view of LCD PCB



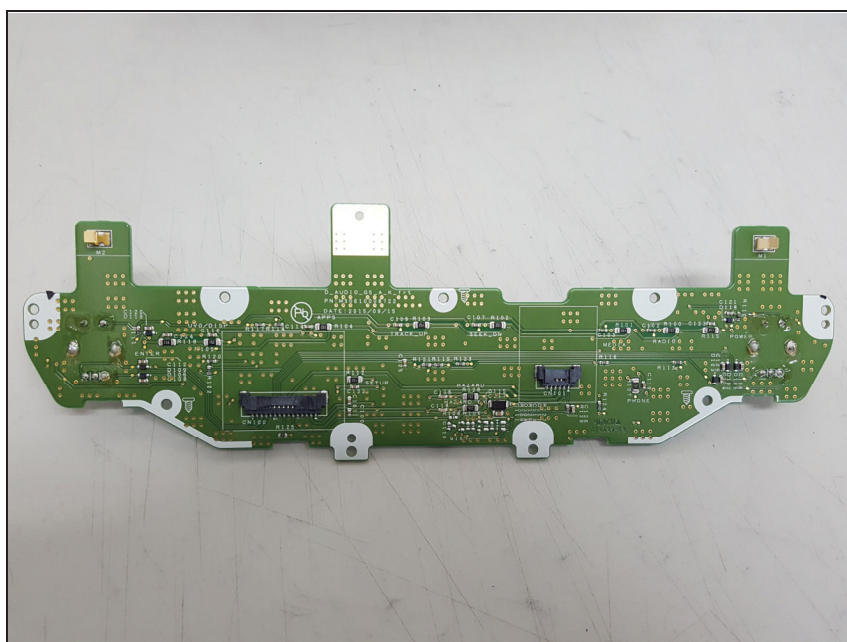
Bottom view of LCD PCB



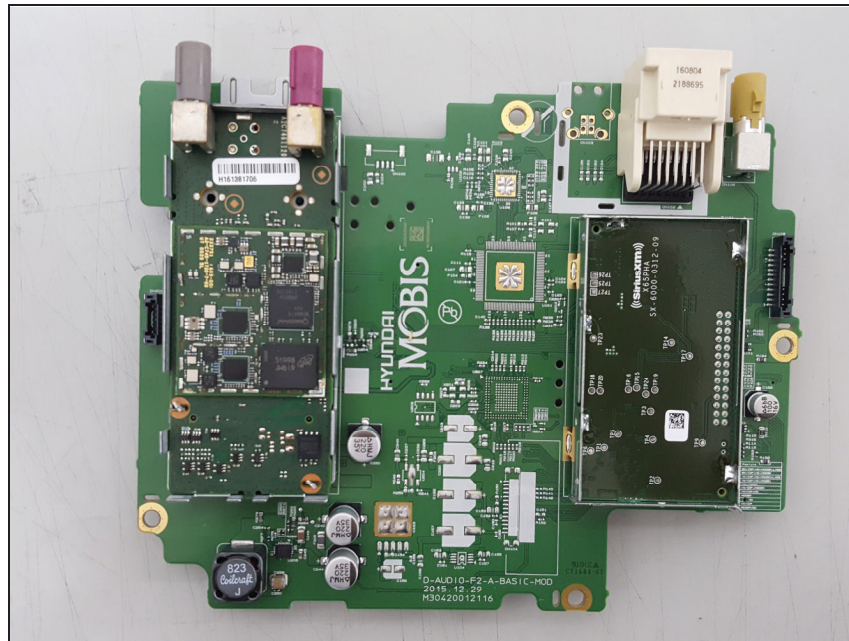
Top view of Sub PCB1



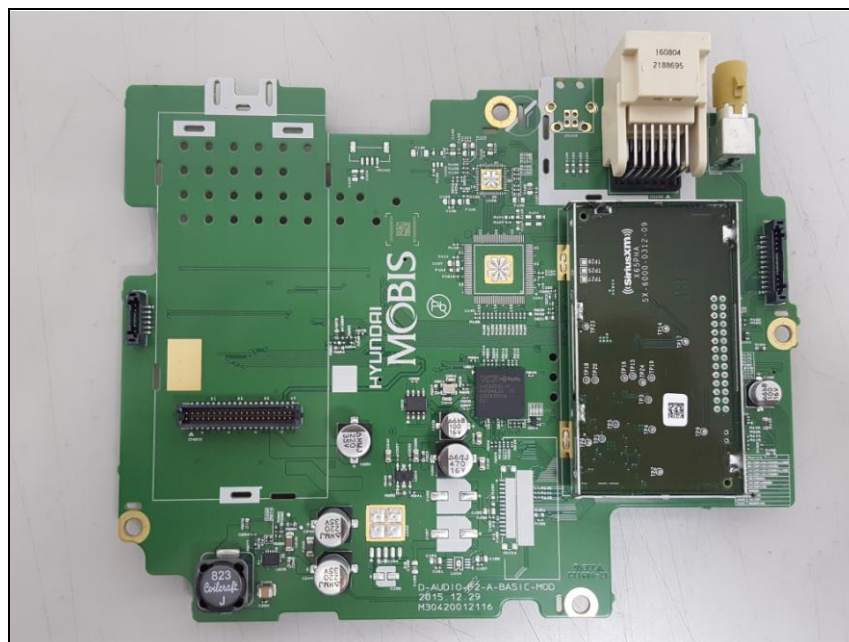
Bottom view of Sub PCB1



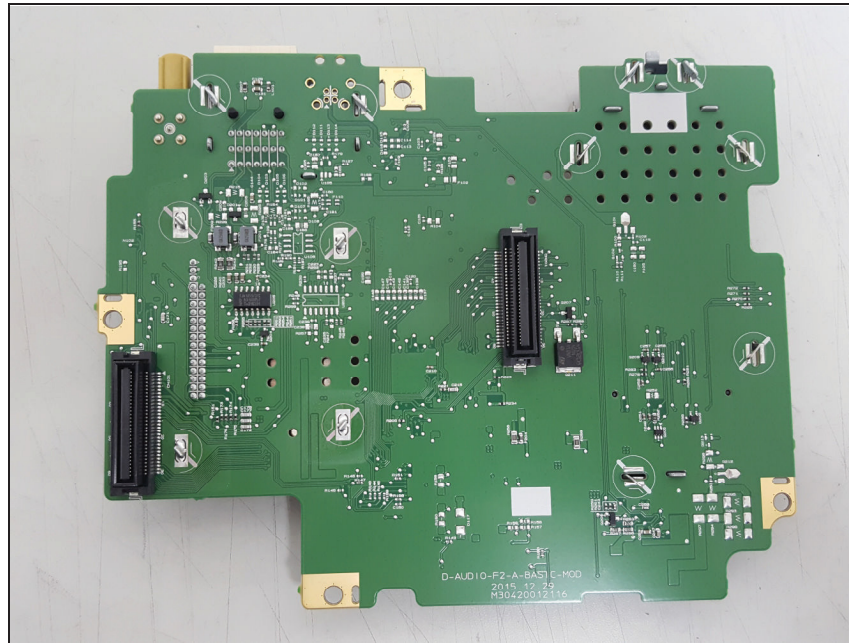
Top view of Sub PCB2



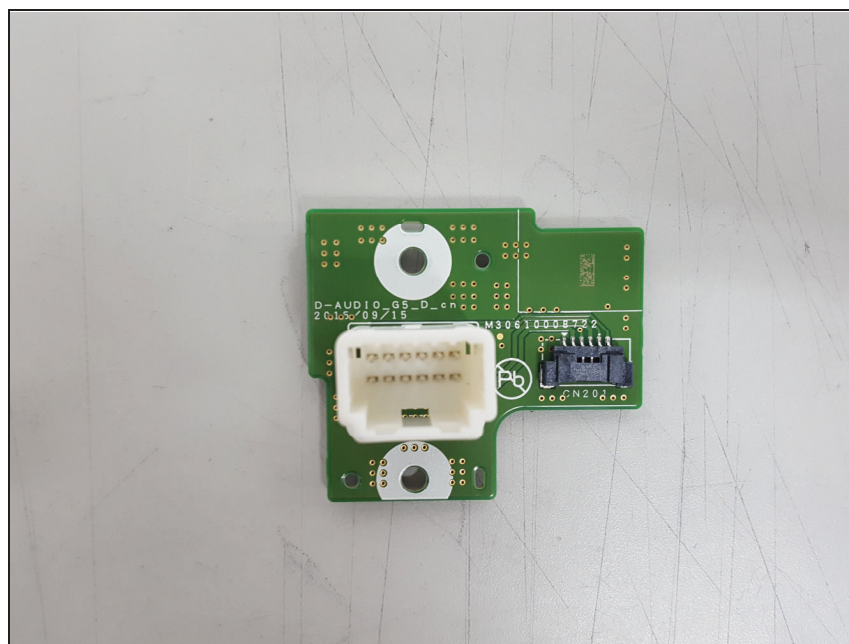
Top view of Sub PCB2 (without LTE, CDMA Modem)



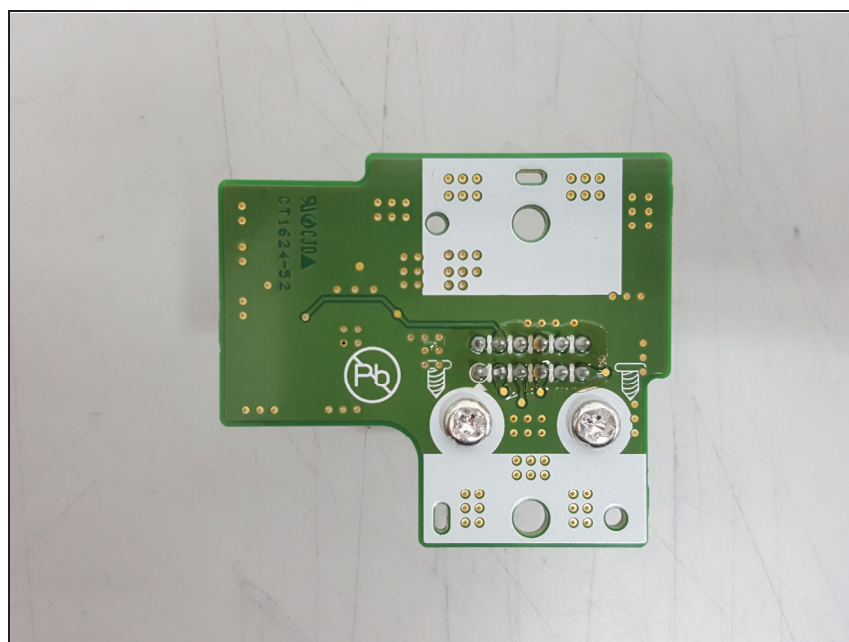
Bottom view of Sub PCB2



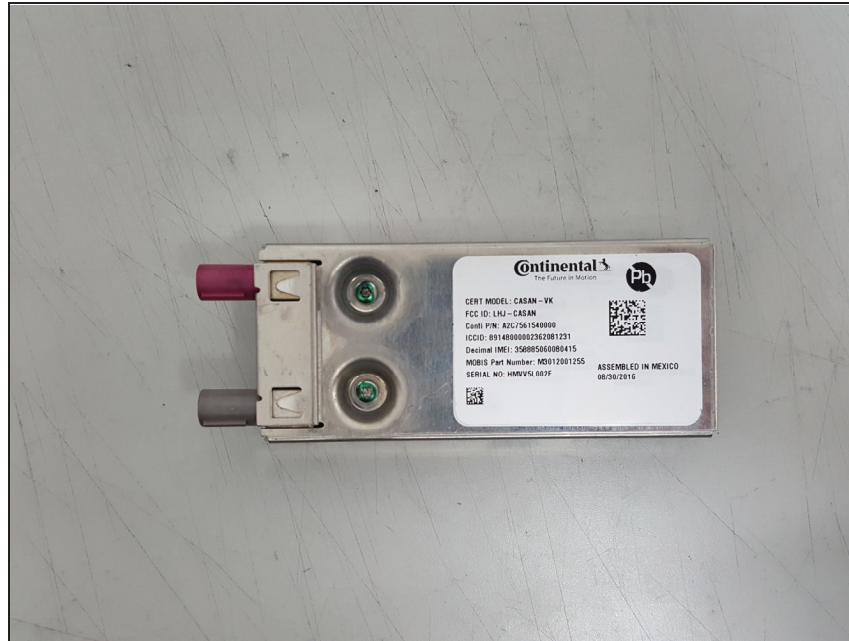
Top view of Sub PCB3



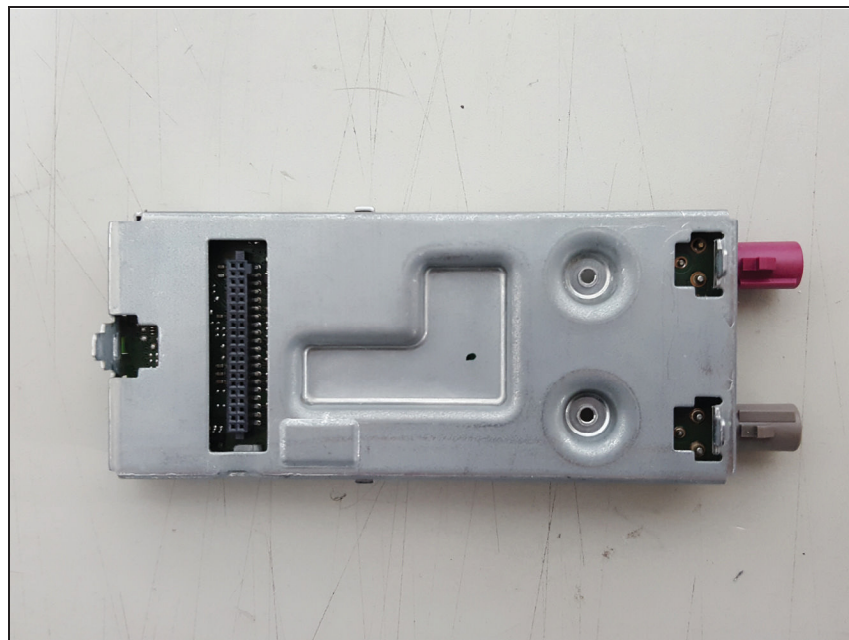
Bottom view of Sub PCB3



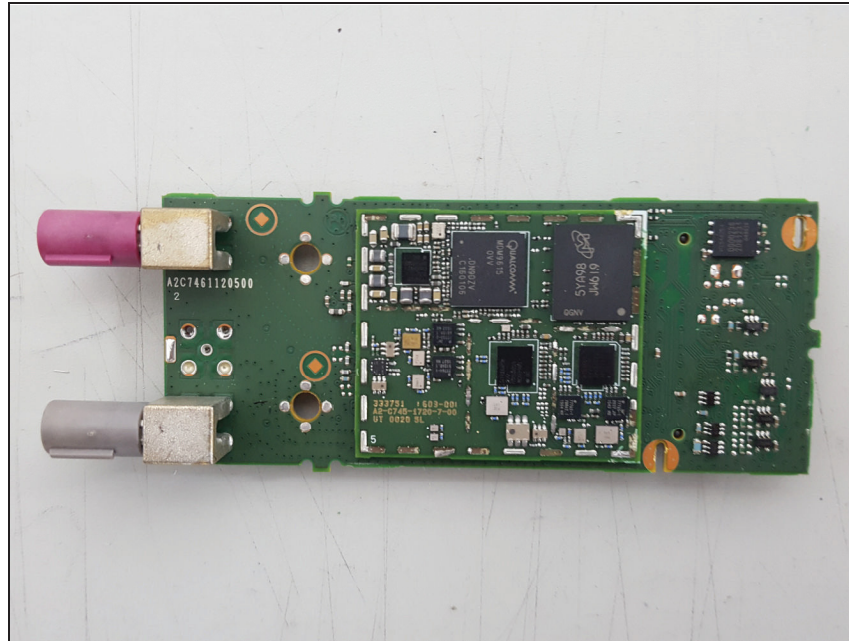
Top view of LTE, CDMA Modem(with Shielding)



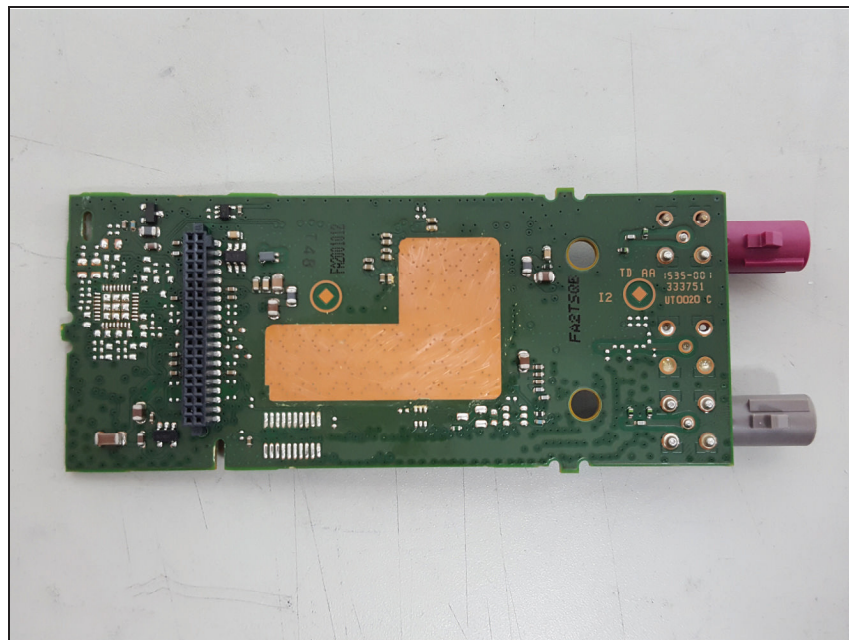
Bottom view of LTE, CDMA Modem(with Shielding)



Top view of LTE, CDMA Modem(without Shielding)



Bottom view of LTE, CDMA Modem(without Shielding)



View of antenna

