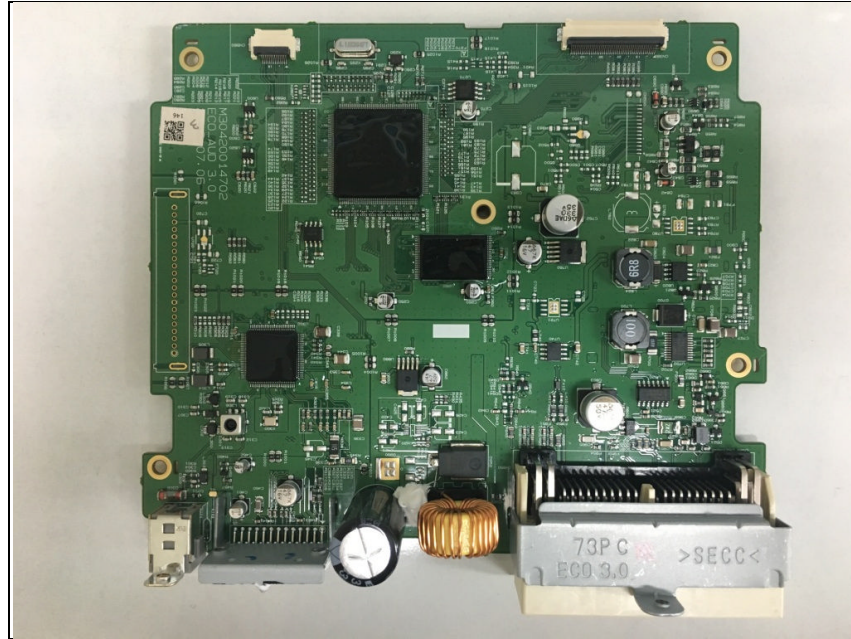


Internal photos of EUT

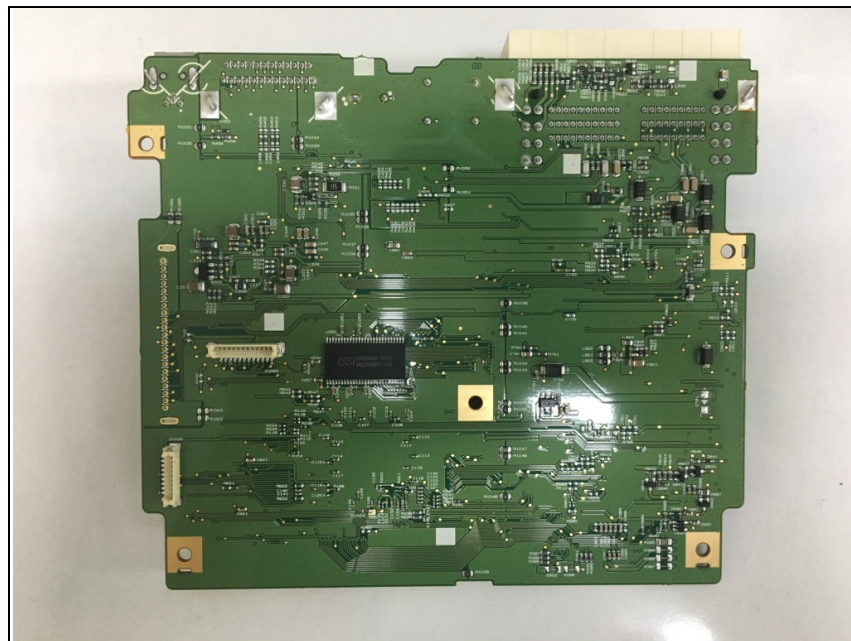
Internal view of EUT



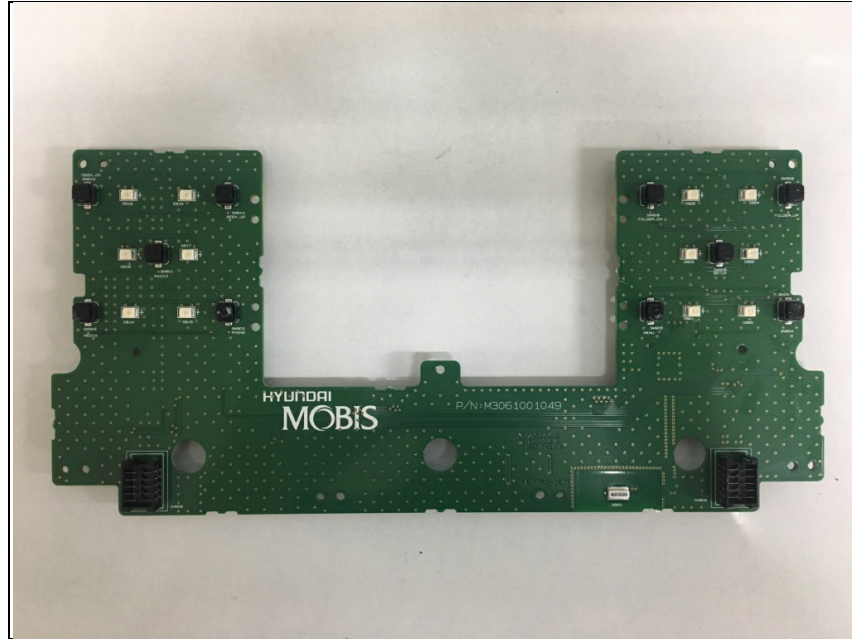
Top view of main PCB



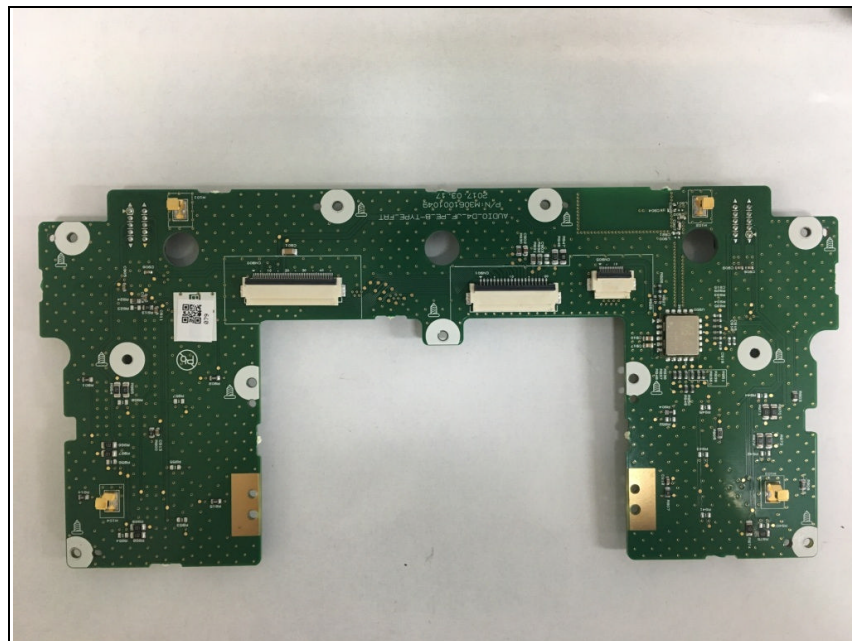
Bottom view of main PCB



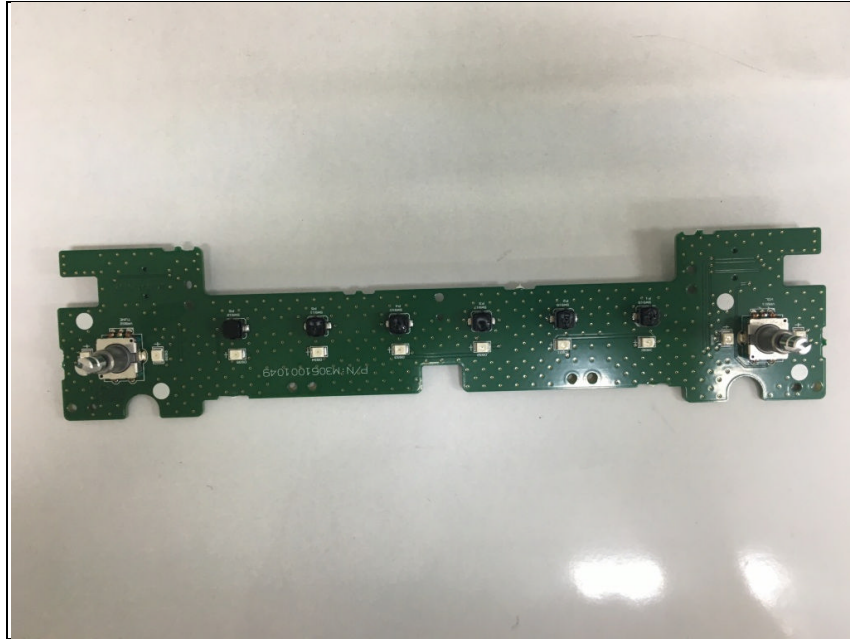
Top view of Sub PCB



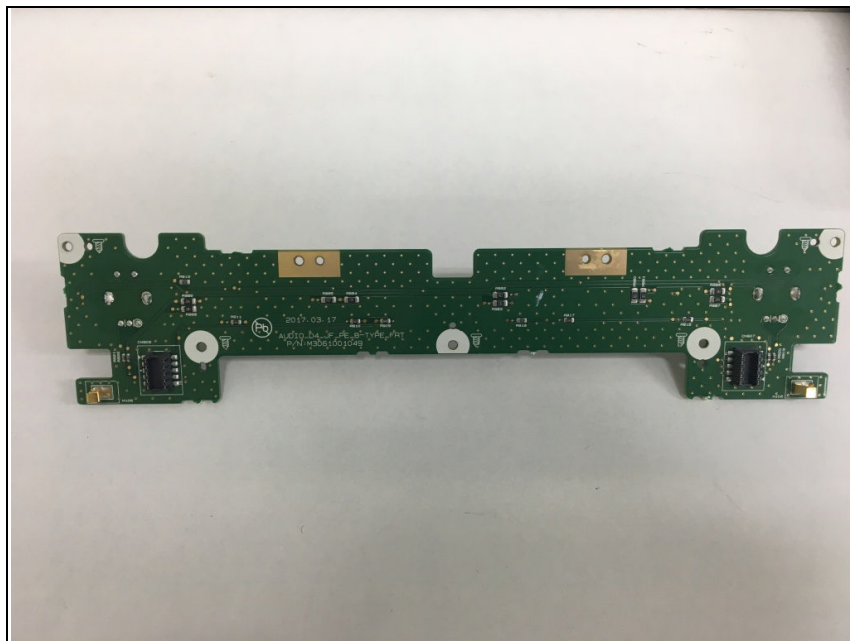
Bottom view of Sub PCB



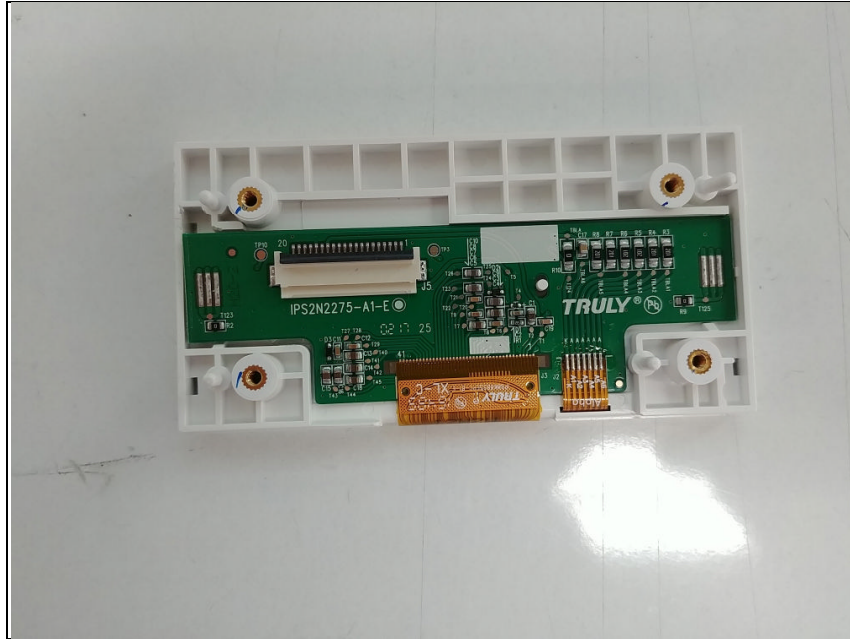
Top view of Key PCB



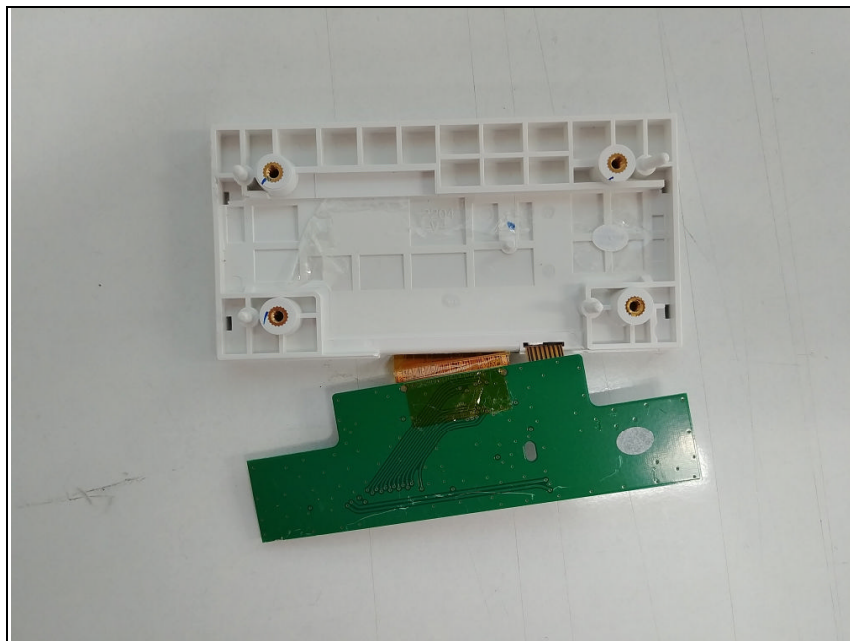
Bottom view of Key PCB



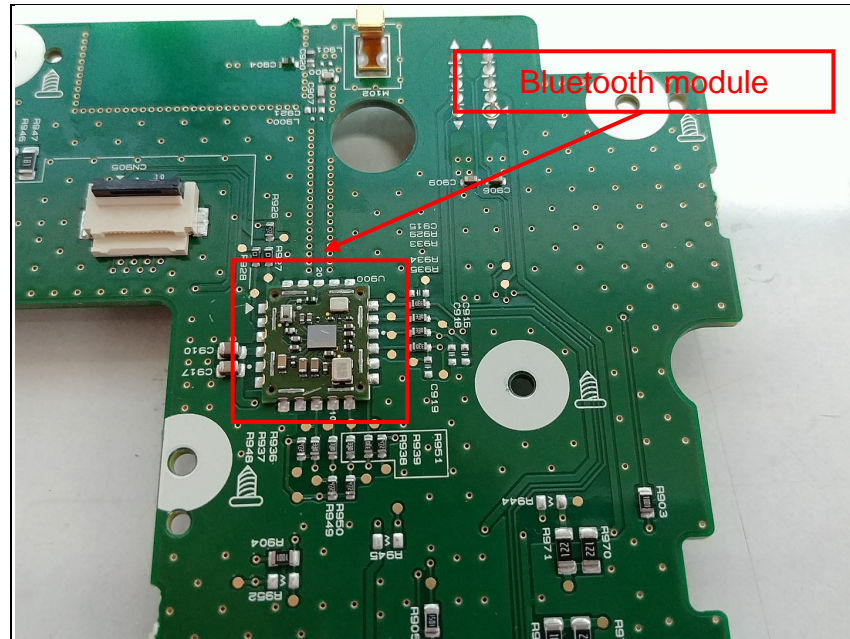
Top view of LCD PCB



Bottom view of LCD PCB



View of Bluetooth module



View of Bluetooth antenna

