

Inner photos of EUT

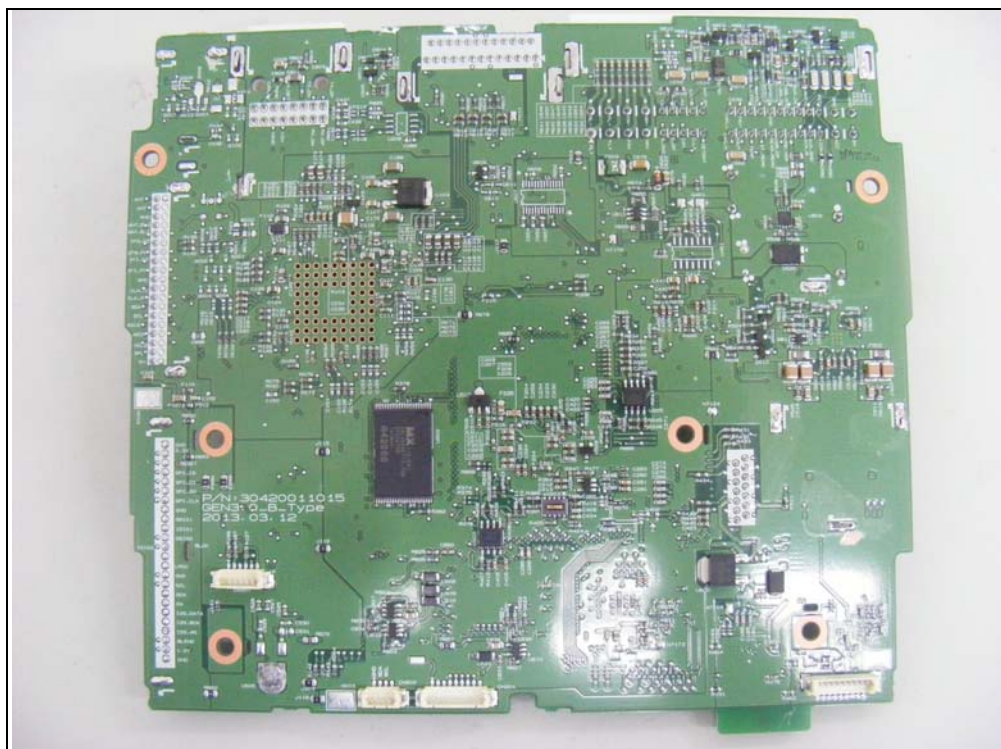
Top view of EUT



Top view of Main PCB



Bottom view of Main PCB



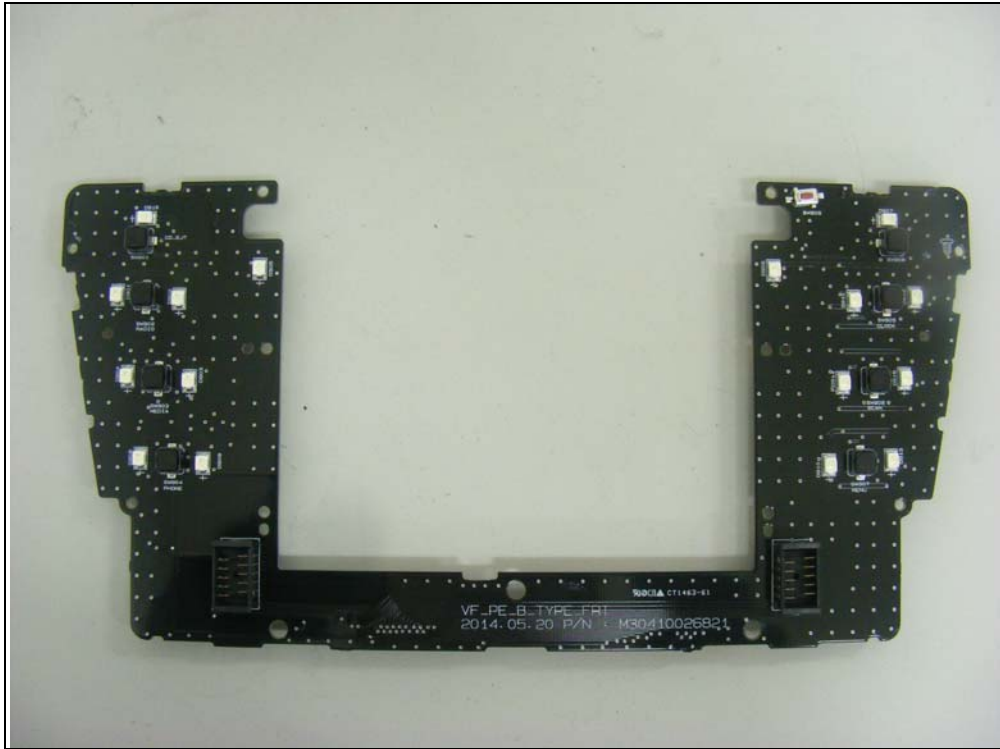
Top view of CD Master



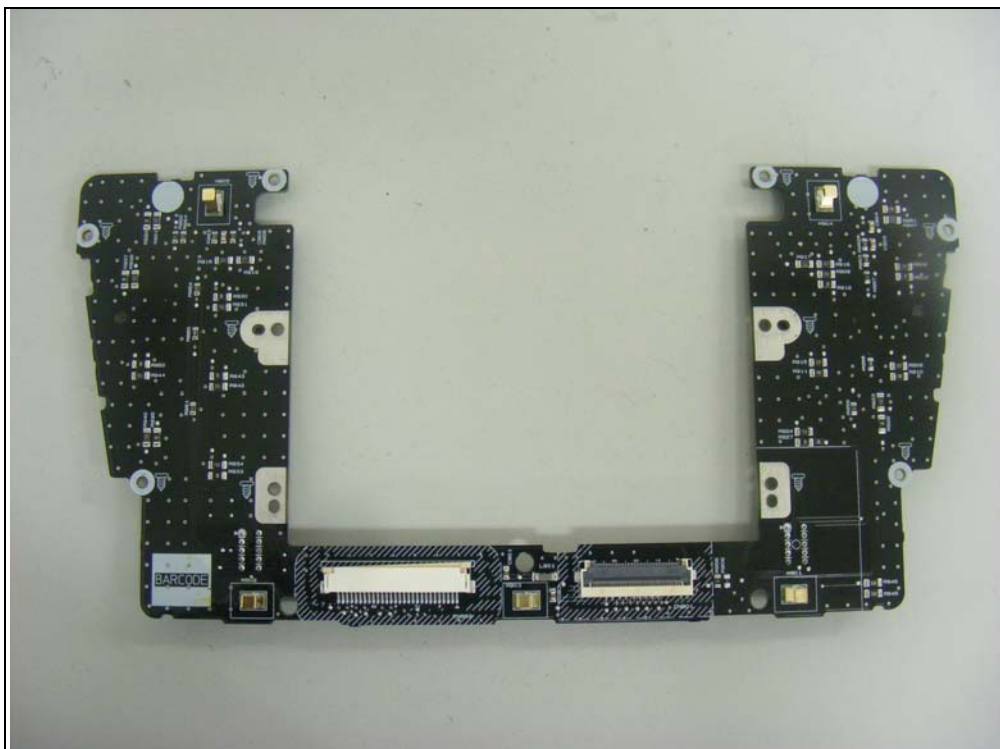
Bottom view of CD Master



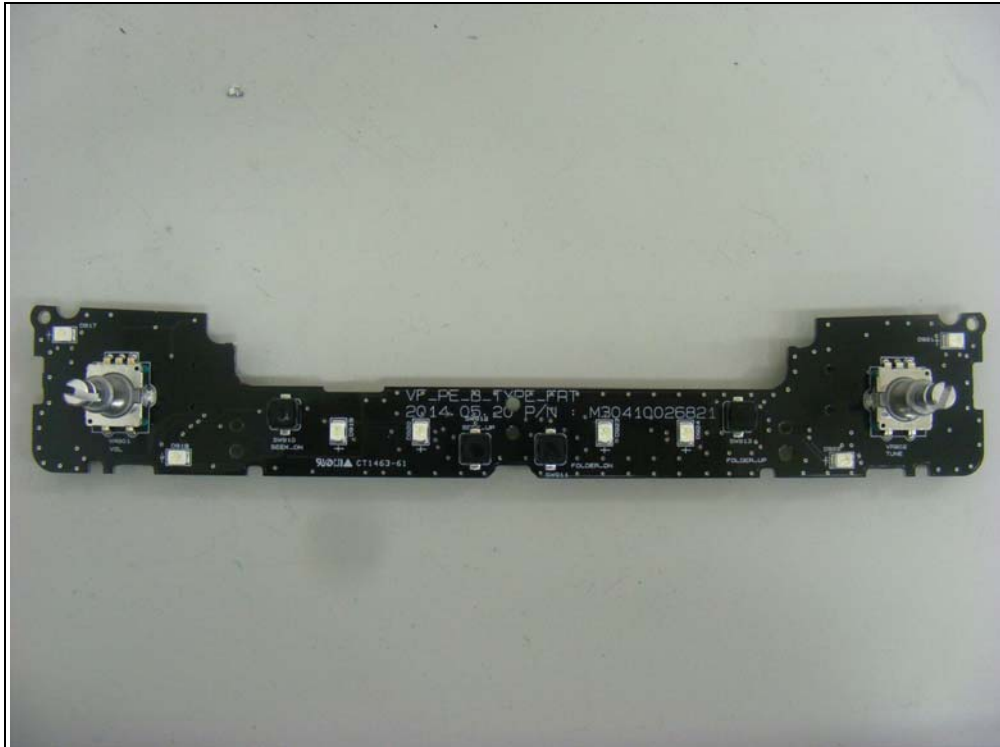
Top view of Keypad-1



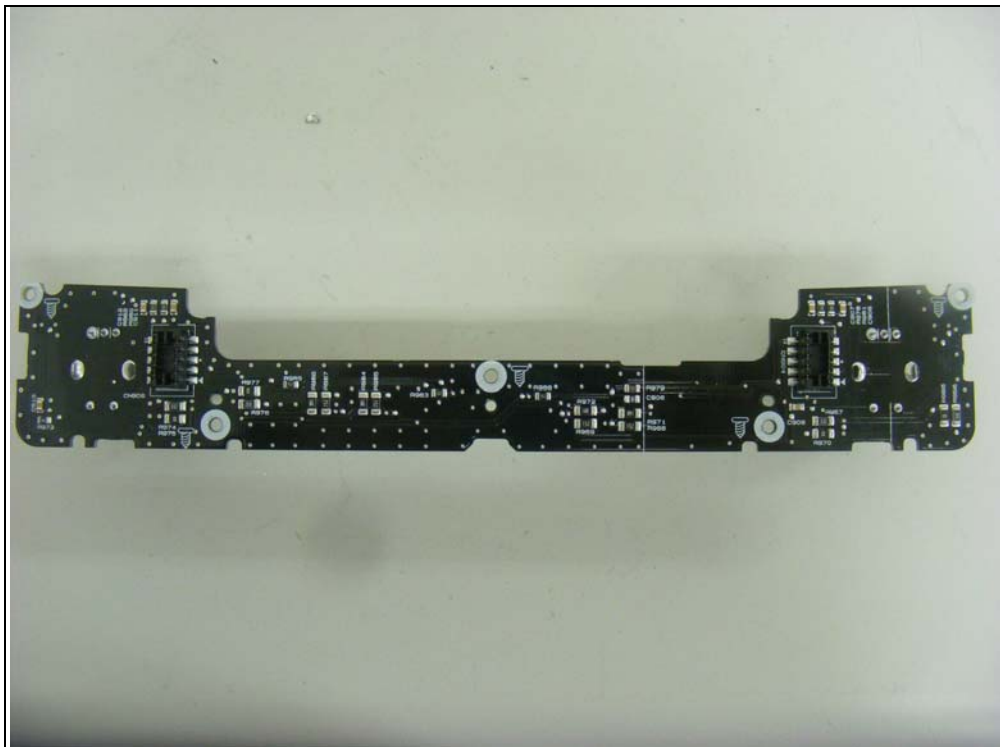
Bottom view of Keypad-1



Top view of Keypad-2



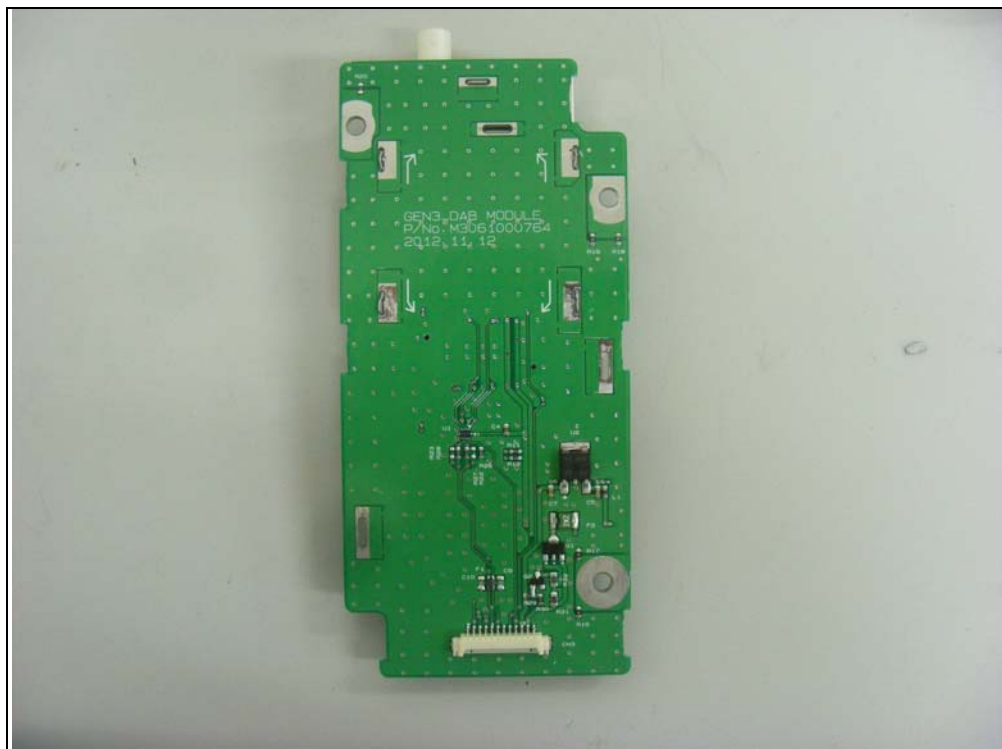
Bottom view of Keypad-2



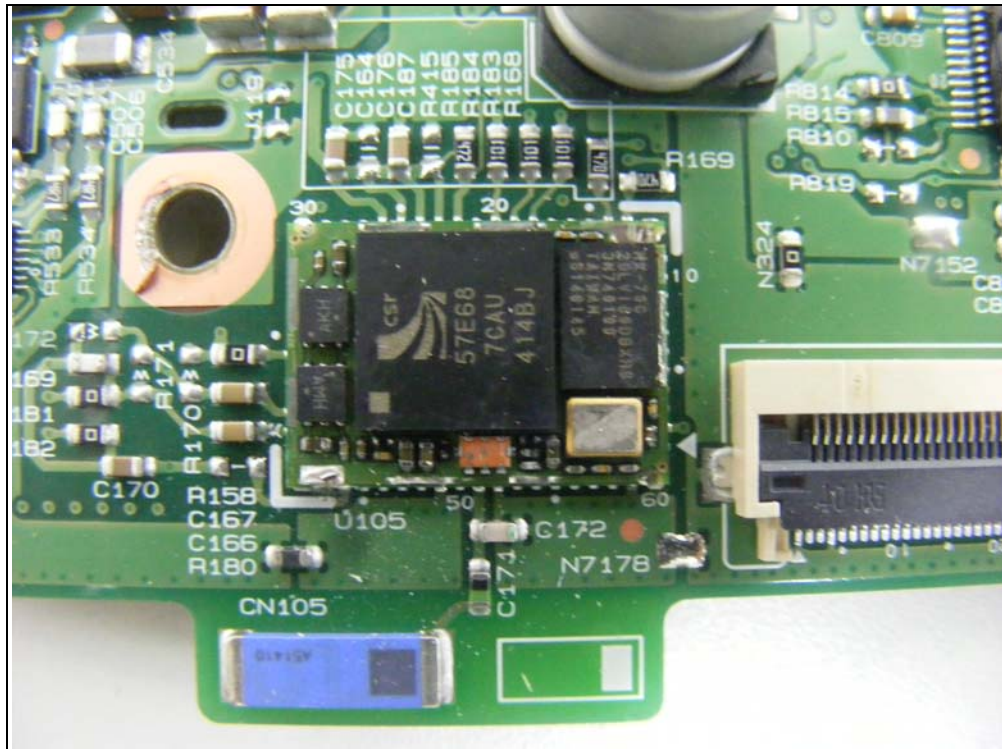
Top view of Sub PCB



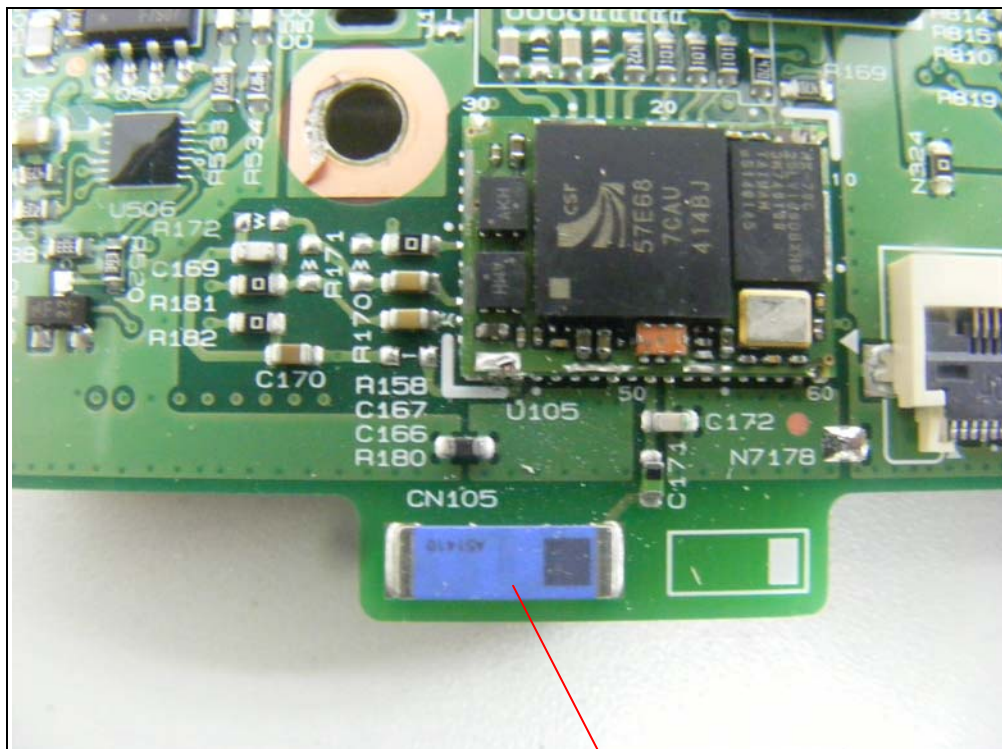
Bottom view of Sub PCB



View of Bluetooth module



Antenna



Chip Antenna