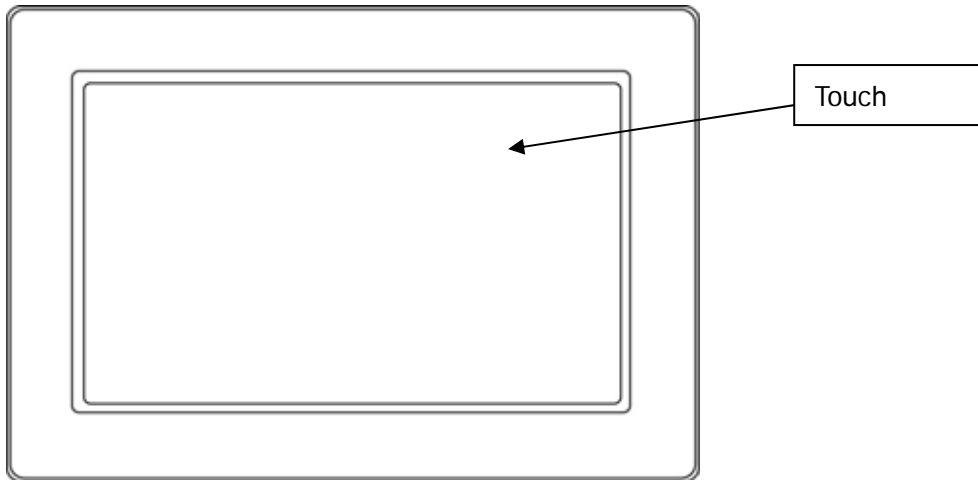


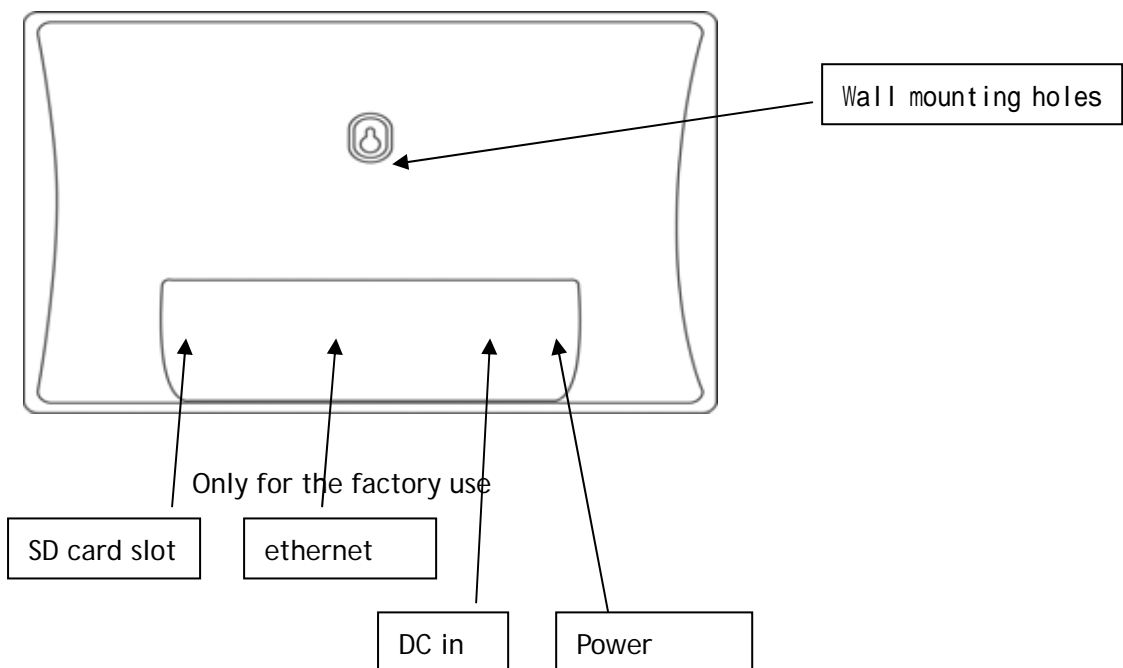
eStarling connected touchscreen frame user manual

1 . Product overview

a) Front view



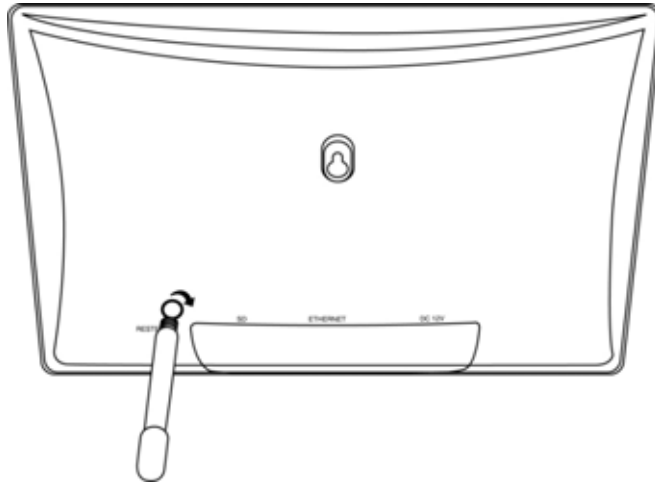
b) Back view



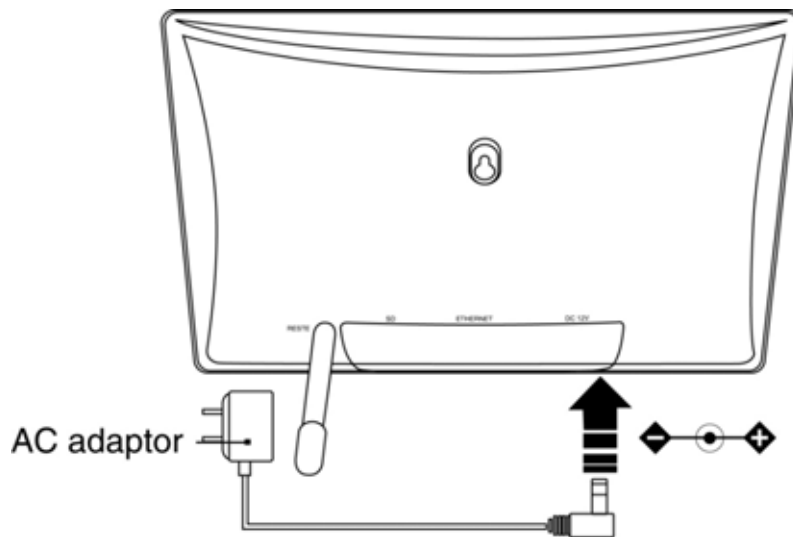
2 getting started

a) Setting up the stand

Rotate into the stand attaching from picture frame.



b) Plugging in the power cord.



c) Press the power button to turn on the frame

d) Connecting to your wireless network

When you turn on the frame, it will scan for any available WiFi networks automatically. Please choose your specified Wi-Fi network, then please input your password into the blank (if you set your wireless as encryption). Enter your password through pressing the virtual Keyboard buttons displayed on frame screen

(Note:

- i) In case of not finding specified SSID, please select Scan Again. In case of scanning failure again and comparatively complicated Wi-Fi network security, please select Manual Setup and Enter to set up your Wi-Fi networks as below. We do not

recommend "Manual setup" if you are not a technology wiz.

Choose your wireless network(SSID)



3) setting up content source

A) setting up gmail account



After setting up your gmail account, you are able to send photos to your frame by attachment. The frame will get these photos immediately and starting slideshow.

B) getting pictures from RSSFEED

RSSFEED module need keep to media RSS 2.0 protocol, and it just contain photos .RSSFEED sent by gmail as follow format:

subject: command

[add rss]#*url_link_address*#

[remove rss]#*url_link_address*#


Please write "command" this word into your email subject. At this rate, our system will parse your RSS comand. [add rss] is adding new rss link to your frame, Oppositely, [remove rss] is removing old rss from your frame.

Example: [add rss]#*

[#](feed://api.flickr.com/services/feeds/groups_pool.gne?id=72526026@N00&format=rss_200)

4) doing more with your frame

A) playing video


- i) Tap  (Home), then (video). Slide to highlight a video source then tap play.
- ii) Slide to the right/left to move up/down the music source list, then tap play.
- iii) Slide right/left to go to the previous/next song, or tap Select all, then tap the Play button on the bottom of the border to start playing video.
- iv) Tap (resume) on the right border to return to your slide show.



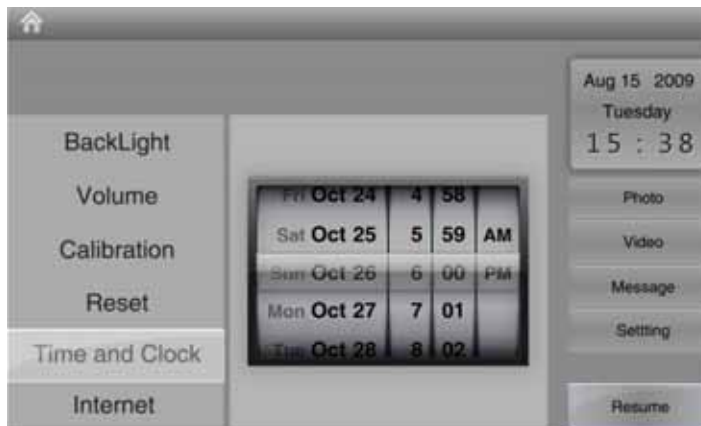
b) getting weather

5) changing setting

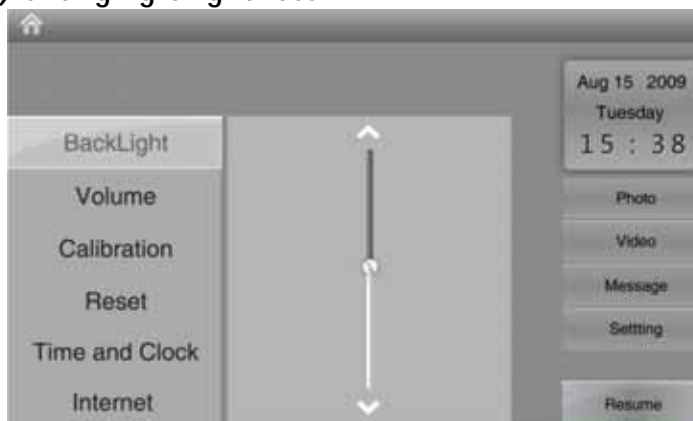
a) Setting the clock and timer

- v) Tap  (Home), then (Settings).
- vi) Highlight Clock and timer, then tap Select.

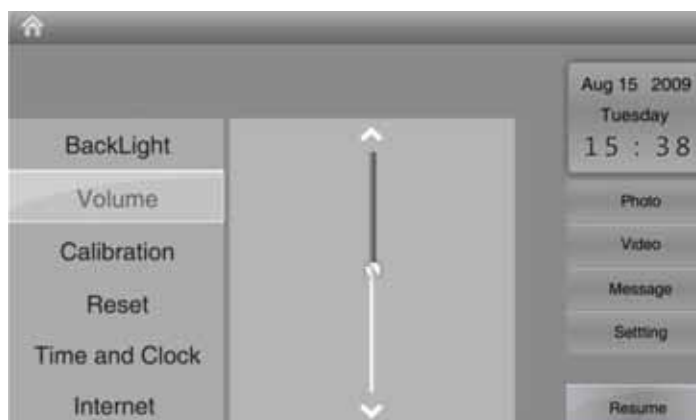
- vii) Highlight Set time, then tap Select.
- viii) Choose the correct day and time, then slide to adjust it.
- ix) Tap Save to accept your changes.



B) Changing brightness

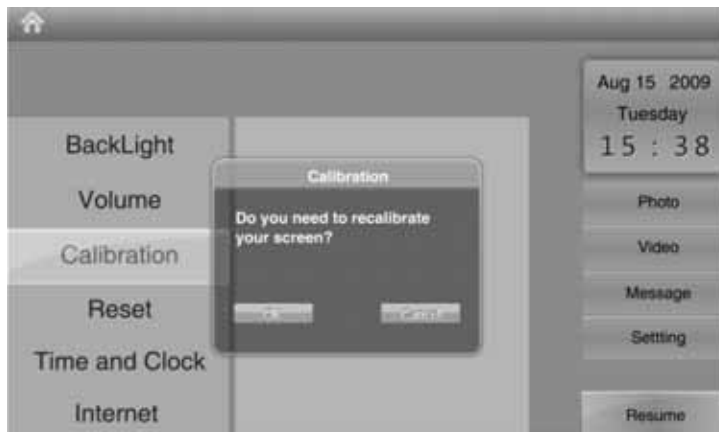


c) Changing volume



d) Adjust calibration

Adjust the touch screen calibration, there is a cross appear on your screen, please press the center of this cross while it show up.



e) Upgrading firmware

The frame will upgrade firmware automatically when it find new version on internet. Caution: **Please do not shut down the frame while it upgrading.**



FCC Caution: Any changes or modifications not expressly approved by the party responsible for compliance could void the user's authority to operate this equipment.

FCC Radiation Exposure Statement:

This equipment complies with FCC radiation exposure limits set forth for an uncontrolled environment. This equipment should be installed and operated with minimum distance 20cm between the radiator & your body.

REMINDING

This device complies with Part 15 of the FCC Rules. Operation is subject to the following two conditions: (1) this device may not cause harmful interference, and (2) this device must accept any interference received, including interference that may cause undesired operation.