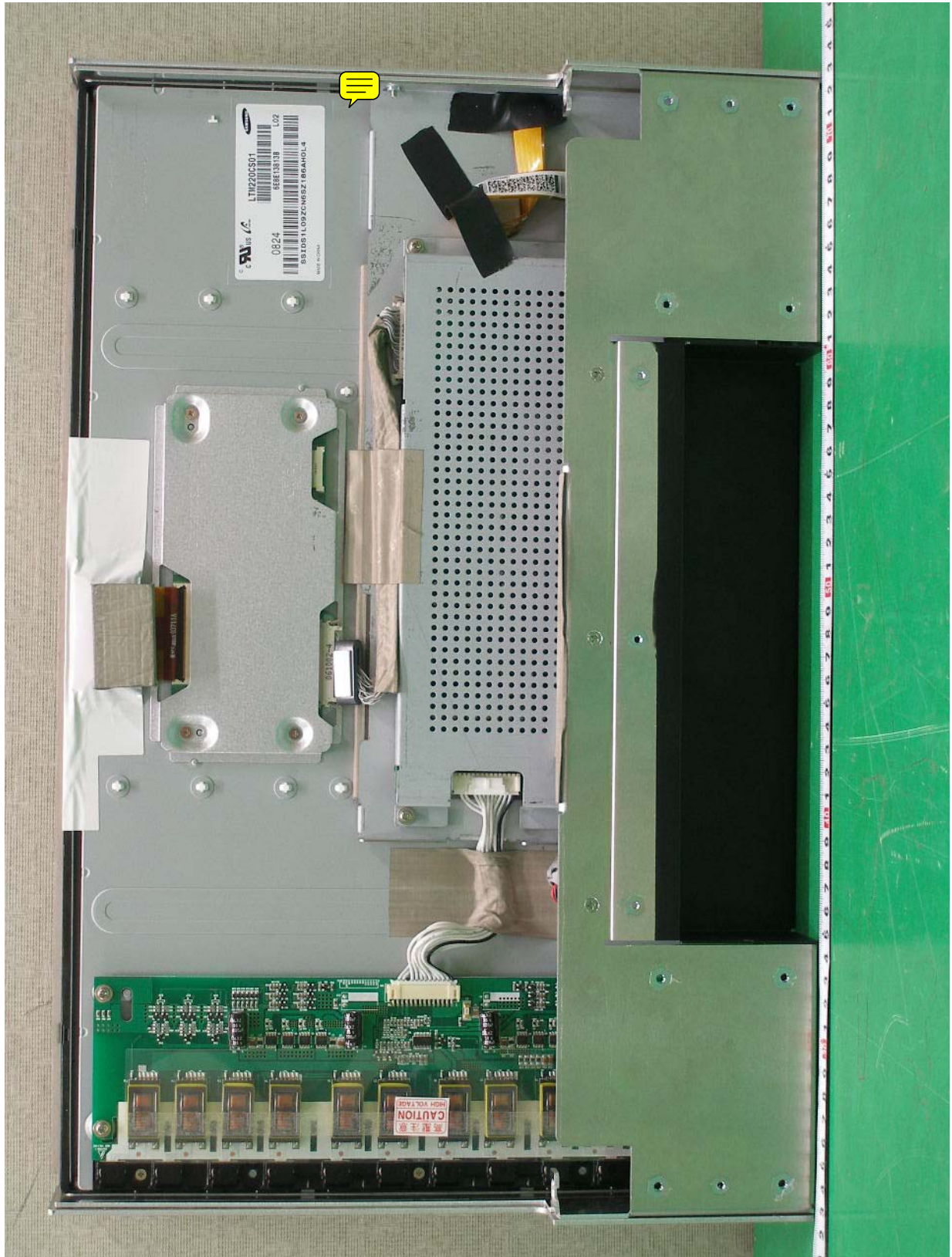


● Inside View of EUT



● Front View of LCD Panel



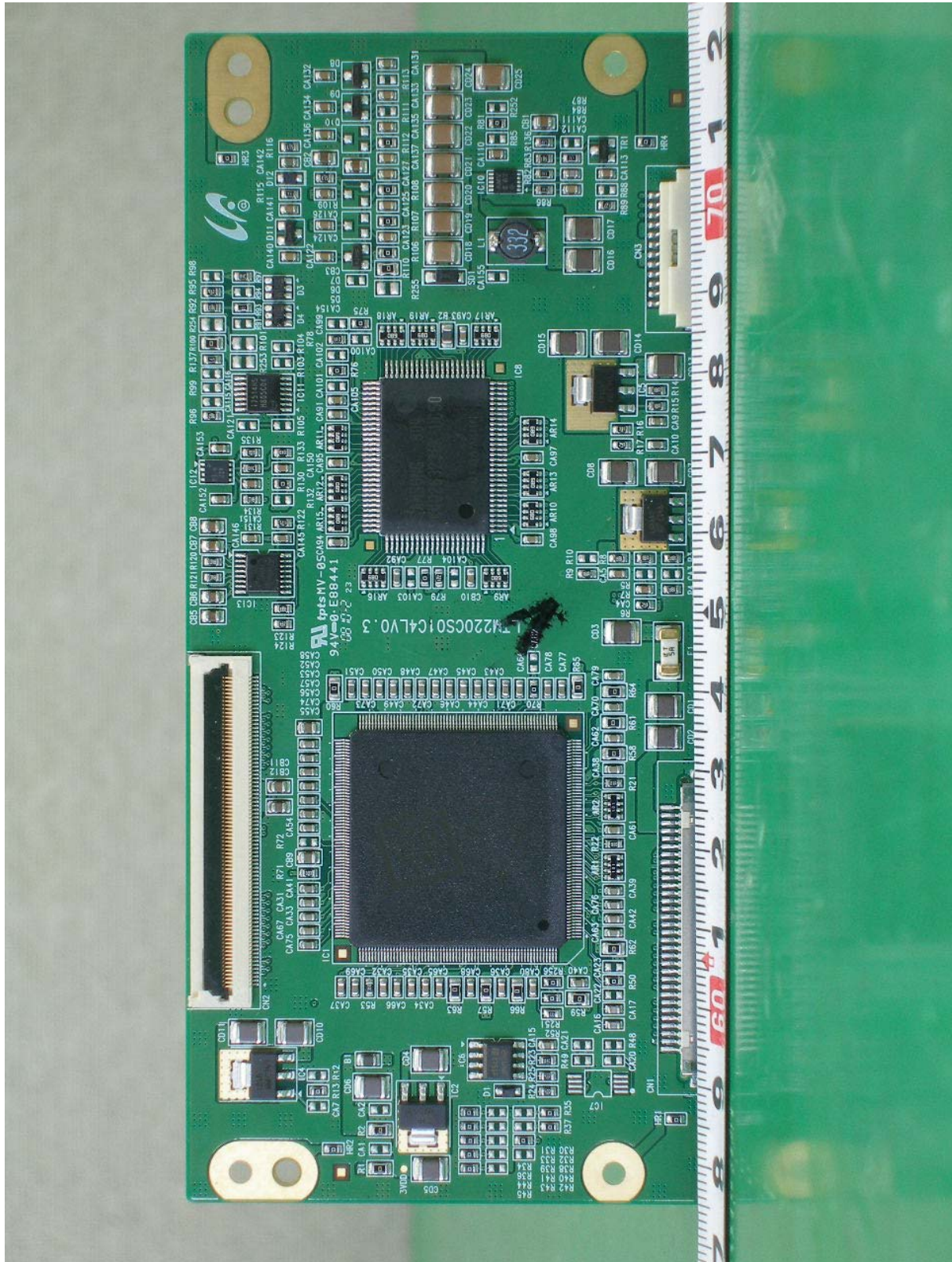


● Rear View of LCD Panel





● Front View of LCD Panel Board

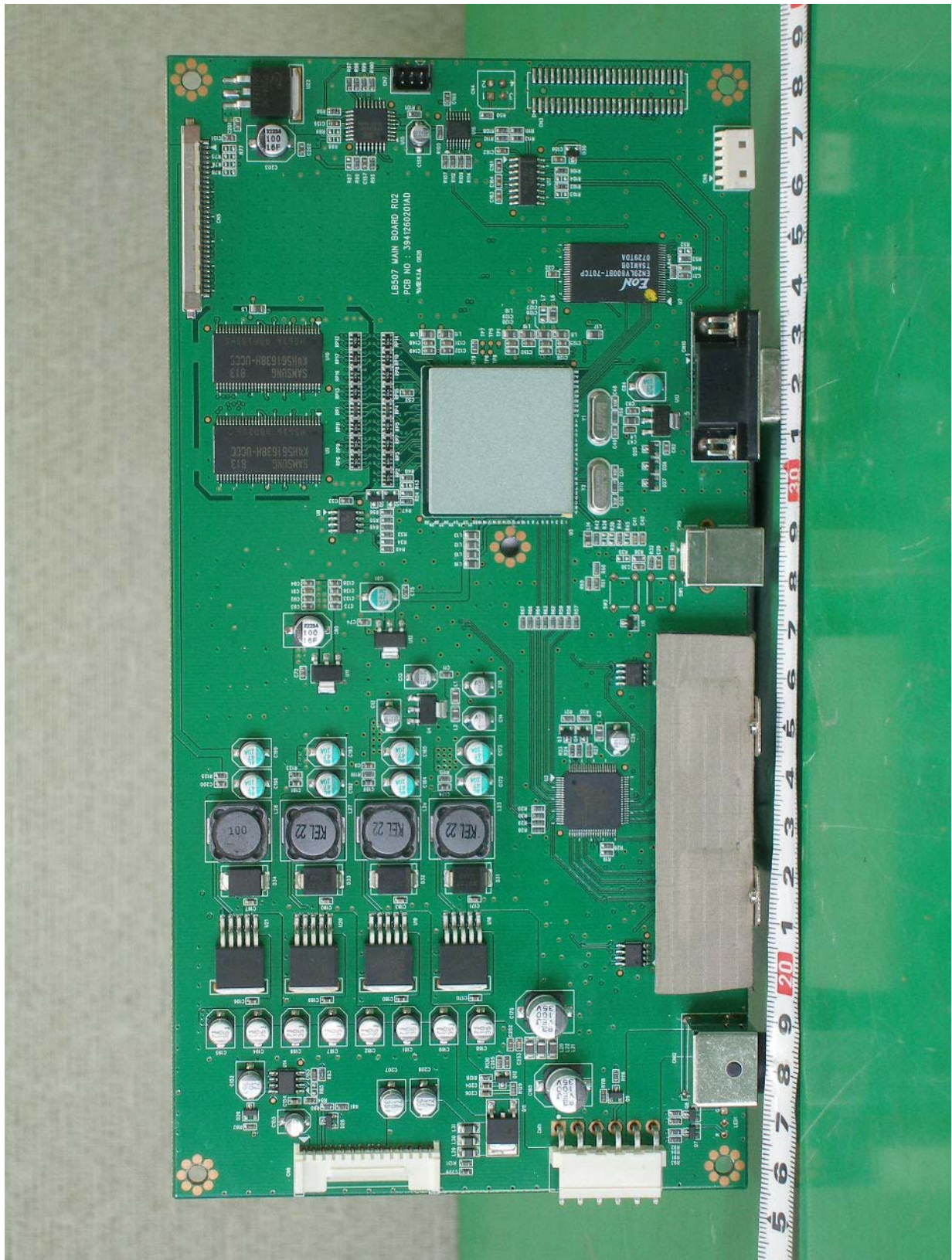






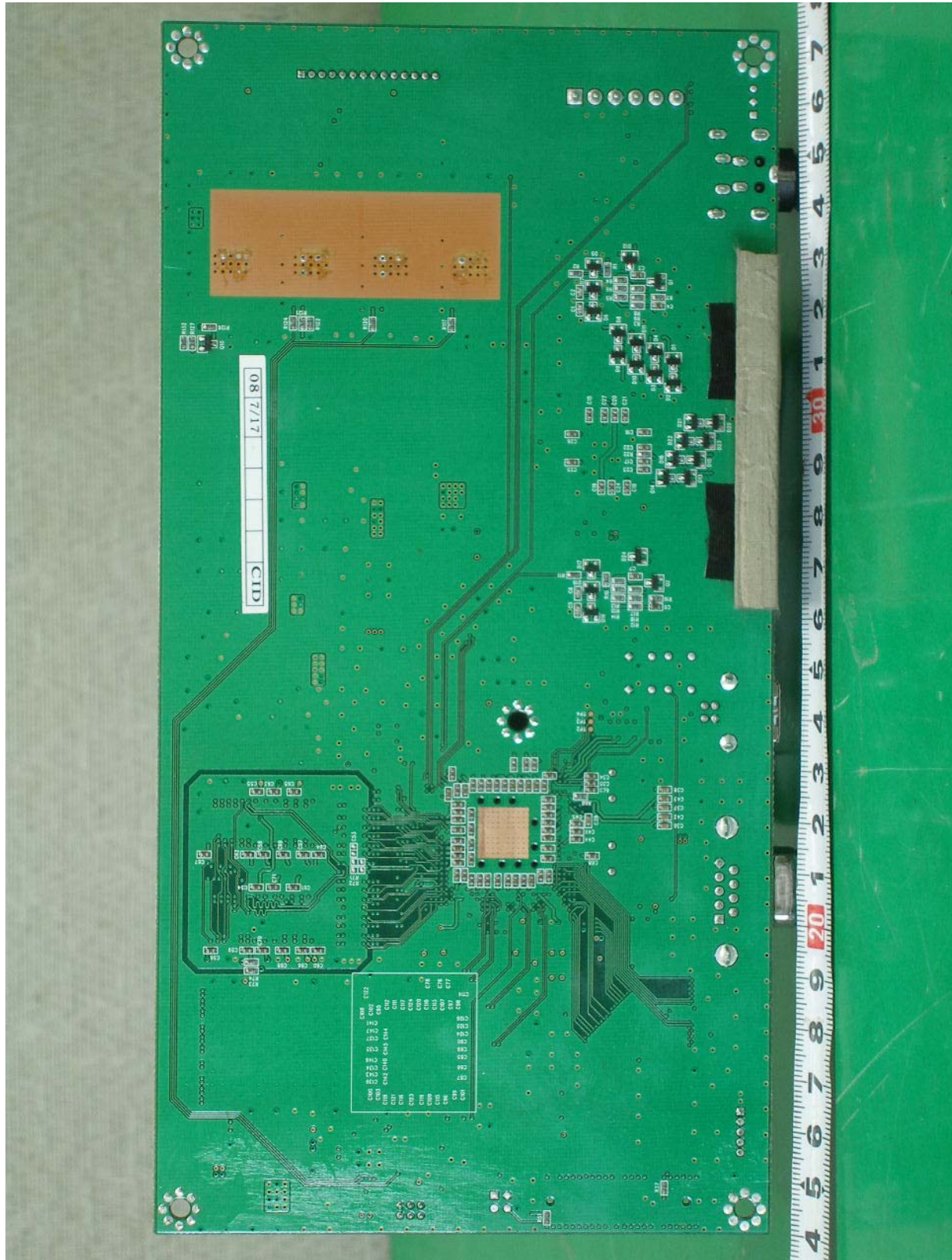


● Front View of Main Board



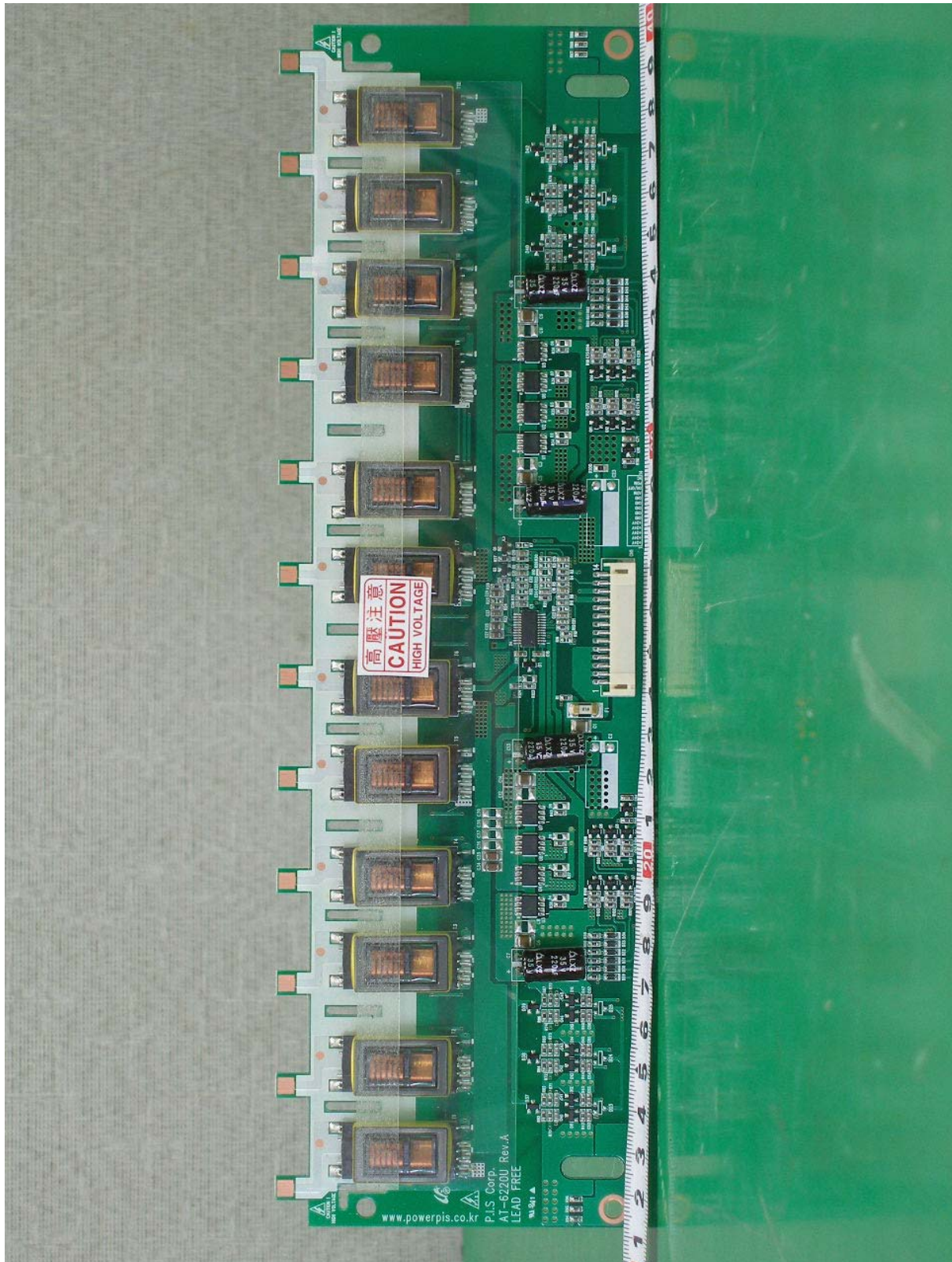


● Rear View of Main Board



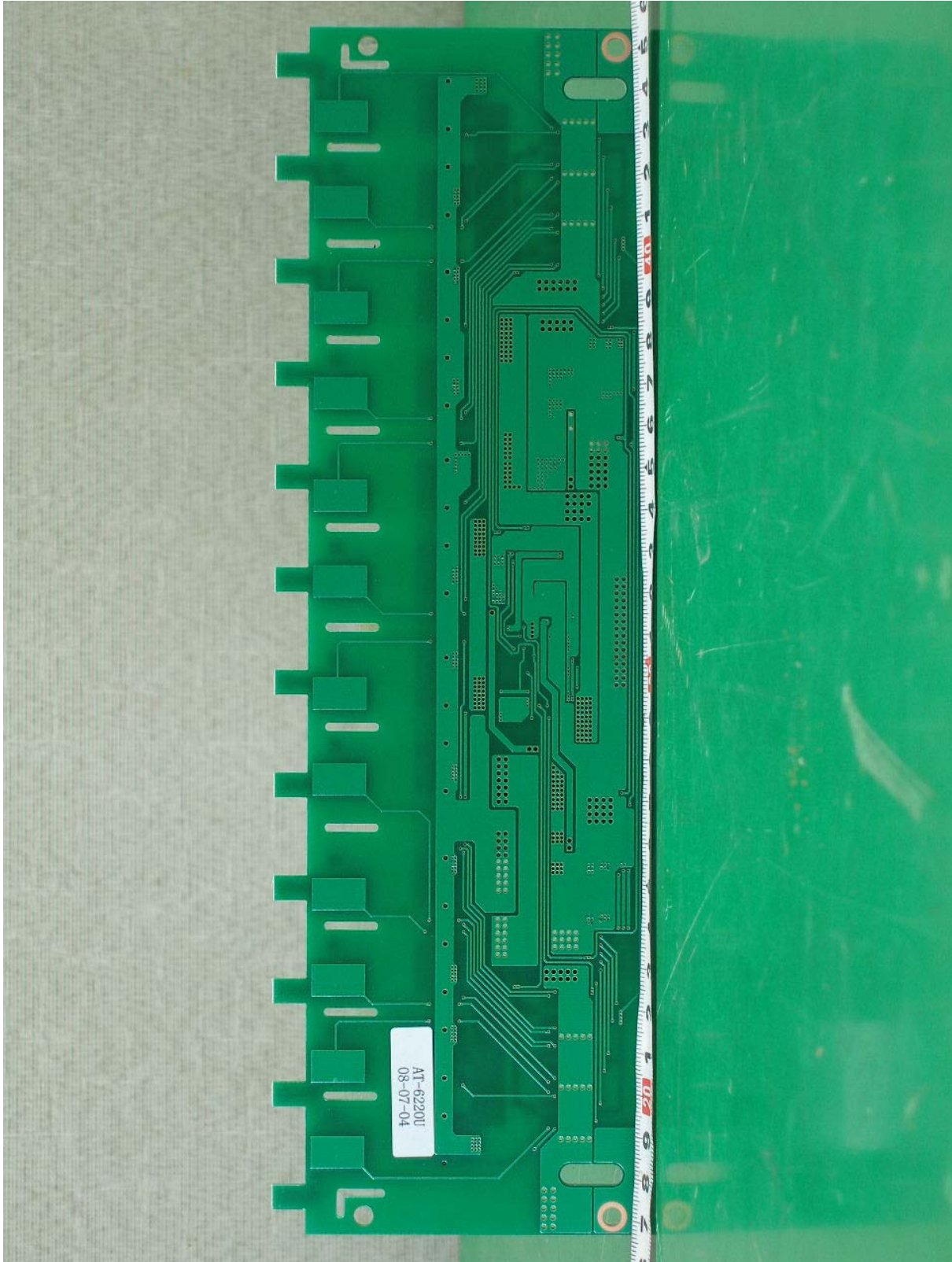


● Front View of Inverter Board



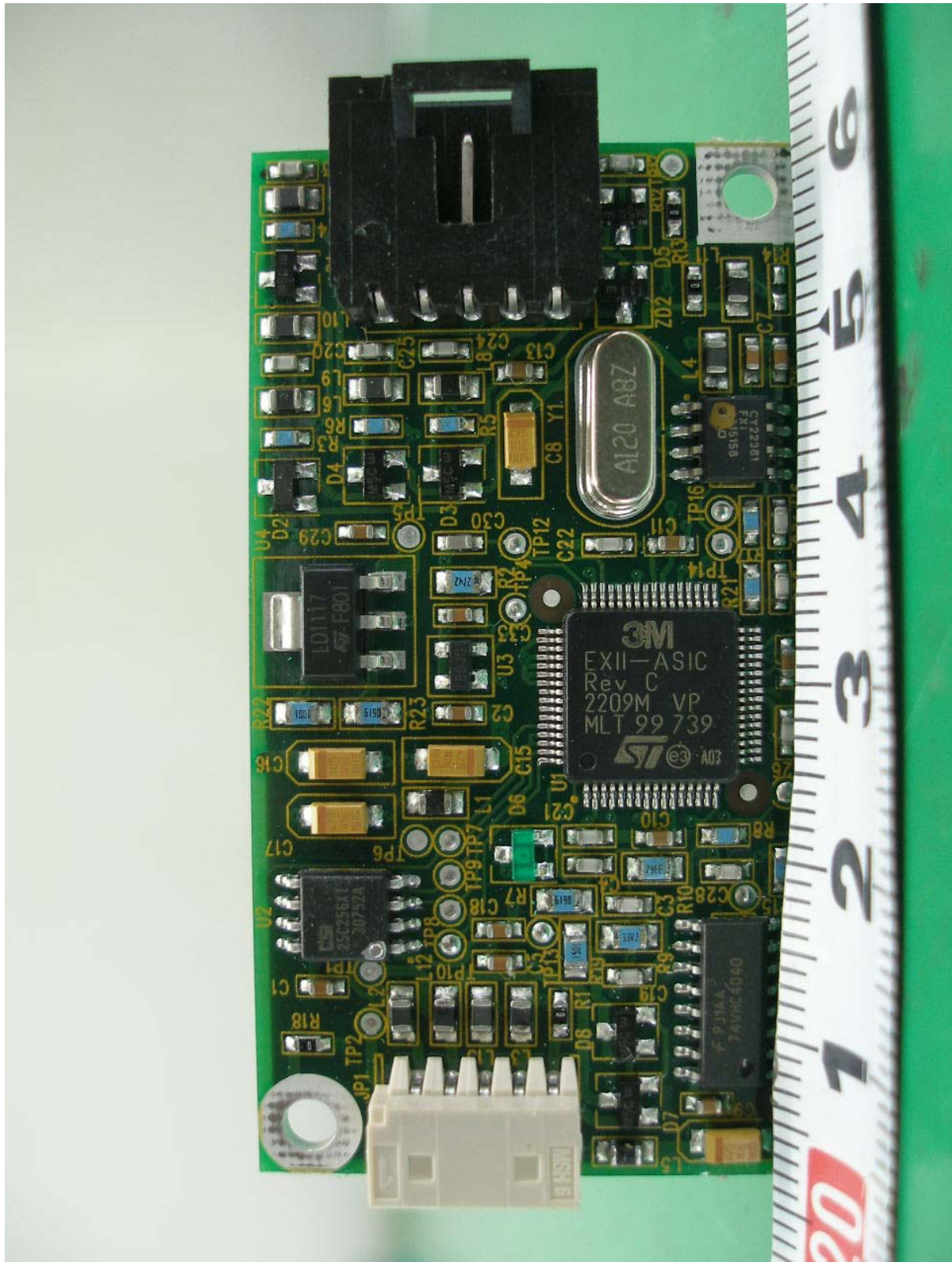


● Rear View of Inverter Board



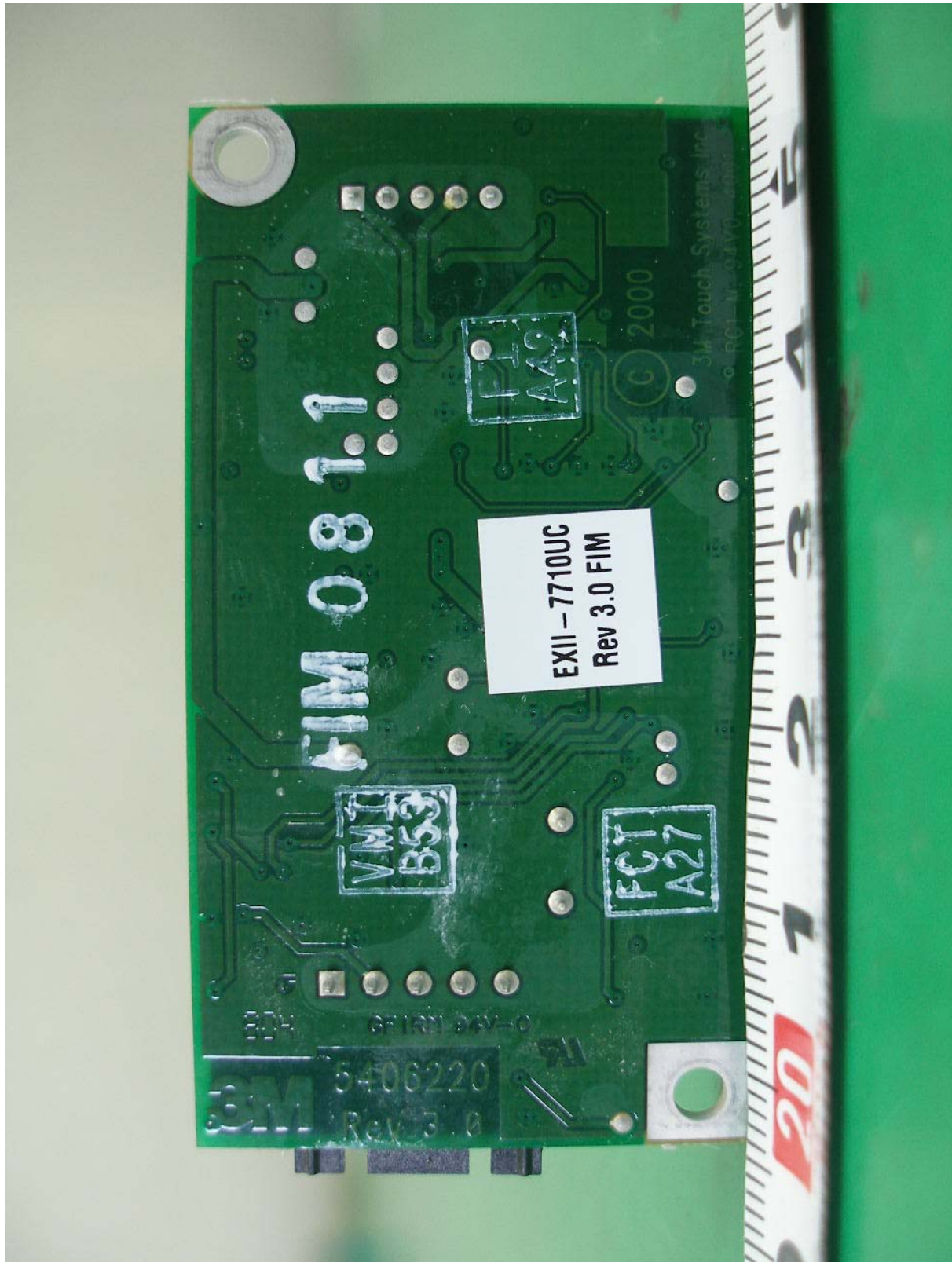


● Front View of USB Controller Board





● Rear View of USB Controller Board





● Front View of Adaptor





● Rear View of Adaptor





● Label View of Adaptor

