

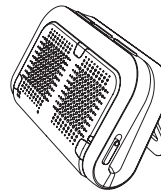
**MOVON**  
www.movon.co.kr

MOVON Corp, Korea All rights reserved.  
MOVON and MOVON logo are registered trademarks of  
MOVON Corporation and our Bluetooth products.  
Bluetooth is a trademark owned by Bluetooth SIG, INC.  
and is used by MOVON Corp, Korea under license.  
Designed by MOVON Korea



## WIRELESS SPEAKER

Bluetooth speaker,  
stereo headset and hands free

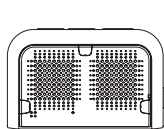


## User Manual MB150

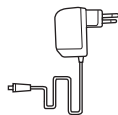


### 1 Product Components

English



① Stereo Speakers

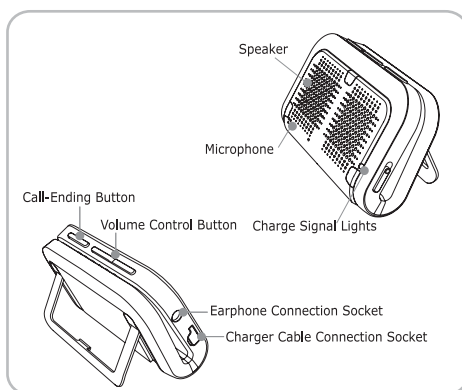


② Charger



③ Manual

### 2 Name of Parts



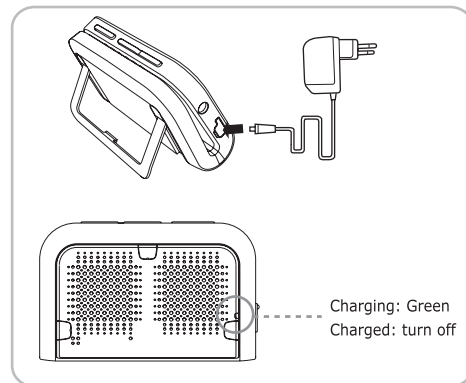
1

### 3 How to Charge

English

1. Plug the charger into a wall outlet.
2. Open up the Main Speaker's USB socket.
3. Start charging after connecting the cable to the USB socket of the main speaker.
4. While charging is in process, the lights are green, and when charging is complete, the lights turn off.
5. Disconnect the charger from the main speaker after charging is completed.

\* Caution: Deformation may occur if the product is connected to an object wider than 5mm

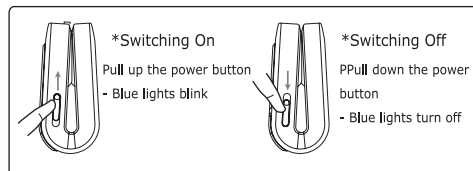


2

## 4 Basic Control

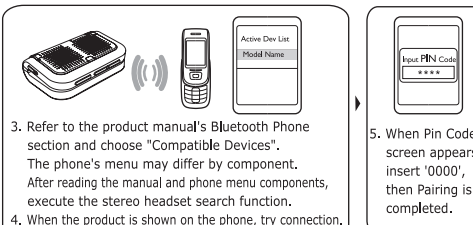
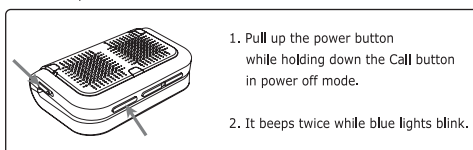
English

### 1. Switching On/Off



### 2. Pairing

#### \* How to pair with Bluetooth Phone



3

#### \* How to pair with a Bluetooth MP3 Player (Stereo Dongle) and Phone

1. When the power is off, pull up the power button while pressing down the Call button.
2. It beeps twice while blue lights blink.
3. Refer to the manual and change the mode to Pairing mode.
4. Establish connection when the product is detected by the MP3 Player or the dongle.
5. When Pin Code screen appears, insert '0000', then Pairing is completed, provided that the Pin Code step may be skipped for dongle.
6. Refer to the manual and choose "Compatible Devices" on the Bluetooth phone's menu. Menu function may differ depending on phones. Execute the searching function for Stereo Headset.
7. When the product name appears, try connection.
8. When Pin Code screen appears, insert '0000', then Pairing is completed.
9. The two products are now connected in synchronization.

\* Important: If pairing is successful, blue LED blinks once every five seconds, otherwise blue LED blinks twice every five seconds.

### 3. How to Play Music



#### \* Play Music

Mode	Description
Play/ Pause	Press Call button + Volume Up or Down simultaneously
Stop	Press Call button + Volume Up or Down simultaneously for 2 seconds
Skip to prev. song	Hold down Volume Down for 2 seconds
Skip to next song	Hold down Volume Up for 2 seconds
Fast Rewind	Hold down Volume Down for longer than 3 seconds
Fast forward	Hold down Volume Up for longer than 3 seconds
Volume Control	Press Volume Up or Down button

4

### 4. How to answer a Call while listening to music

- Music stops automatically and music turns to bell ring when there is an incoming call.
- Press Call button lightly to answer the call.
- When the call ends, music resumes automatically.

### 5. How to reject a Call while listening to music

- Hold down the Call button for more than 2 seconds

\*In normal audio dongle, Play/ Stop/ Fast Forward/ Fast Rewind function can be limited

### 6. How to Use Phone

#### \* Making Call

Mode	Description
Sending/Receiving/Ending Calls	Press Call button lightly once.
Switch to Speaker phone or vice versa	Hold down Call button for 2 seconds during call
Redialing the previous number	On standby mode, hold down Call button for 2 seconds
Returning the call received	On standby mode, press Volume Up + Down
Voice Dialing	On standby mode, press Call button lightly
Rejecting Call	During incoming call, hold down Call button for 2 seconds
Mute On Microphone	Hold down Volume Up or Down for 2 seconds during call
Mute Off Microphone	Hold down Volume Up or Down lightly.

5

English

### 7. Call Standby (3-way Calling)

Before using 3-way Calling by the speaker, check if the phone supports Hands-free function.

Further, be aware that 'Call Hold' and 'Multiparty' functions are available only through your phone service provider.

-(Recommendation) The easiest way to utilize Call Standby is using 'Send' button

#### \* Call Standby Using Speaker

- By pressing Call button and Volume Up button simultaneously, you can transfer to standby call and end current call
- By pressing Volume Up and Down button simultaneously, you can transfer to standby call and make your current call standby
- By pressing Call button and Volume Down button, you can end standby call

### 8. How to change rings tones

While the speaker is in standby, hold down Volume button (Up or Down) for 3 seconds to hear a bell ring. Depending on your preference, you can choose different ring tones by pressing Volume button (Up or Down). The last ring tone you hear will be set as your ring tone.

\*A Phone with built-in ring tone support may not support a selected ring tone.

### 9. How to set a receiving call to the voice message mode

You can transfer an incoming call to the voice message mode.

You can set the voice message mode in standby mode by holding down Call button for 3 seconds. Then it is set as an automatic voice message mode with a soft high pitch sound that beeps twice. To cancel the mode, hold down Call button for 3 seconds and you will hear the same high pitch sound again.

6

**10. How to set last received call to the voice message mode**

Keep pressing Volume Up and Down button for 2 seconds

**11. Missed Call Reminder Function**

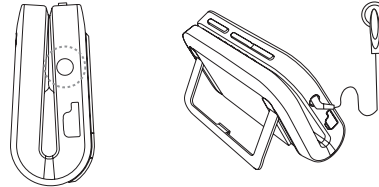
When there is a missed call, a high pitch reminder tone rings every 20 seconds. To cancel the reminder sound function, press Call button or Volume (Up or Down) button.

**12. Status indication**

Mode	LED Indication	Tones
Power On	Blue LED blinks 3 times	Starting ring tone
Call Connecting	Blue LED blinks 2 times in 5 seconds	
Standby after connection	Blue LED blinks once in 5 seconds	
Conversation/ Music Playing	Blue LED	
Charging Red LED turns on		
Completed Charging	Red LED turns off	
Indicating Low Battery	Blue LED blinks every 30 seconds	Every 30 seconds, high pitch tone rings three times
Pairing	Blue LED blinks fast	High pitch tone rings twice

**13. How to use earphone**

Plug an earphone into the product's earphone connection socket. After connection, internal speaker automatically turns mute.

**5 Product Specifications**

Bluetooth Specifications	Bluetooth 2.1 + EDR
Support Profile	A2DP, AVRCP, HFP, HSP
Wireless Coverage	Maximum 10 m
Maximum Standby Hours	500 hours
Call Duration	20 hours (min)
Music Play Duration	20 hours
Battery Charging Time	3 hours
Battery Specifications	Lithium polymer (3.7V/1100mAh)
Size	89 X 57 X 26 mm
Weight	111 g

**6 Safety and General Information**

1. Please read this guidebook carefully and follow the instruction
2. To avoid any damage or malfunction of the unit do not drop unit from high places
3. Keep away unit from humidity, water and any other liquid. And if the unit is exposed by water, moisture and other liquid directly then don't operate it normally to avoid any electrical shock explosion and damage of the unit .
4. Do not place or keep the unit near the heat sources such as direct sun light, radiators, stoves or other apparatus which produce heat. It may cause explosion, degrade of performance and reduce battery life.
5. Do not modify, repair & disassemble unit at discretion (Especially battery: It may cause an explosion)
6. Do not place the heavy objects on the unit.
7. Use only supplied and approved charger.
8. Replacement or service must be done at a qualified service center or returned to the manufacturer.
9. Unplug this unit when unused for long periods of time or during lightning storms.

**⚠ CAUTIONS: ELECTRIC SHOCK HAZARD**

The battery used in this device may present a risk of fire or chemical burn if mis-treated.

**7 FCC STATEMENT**

This device complies with part 15 of the FCC Rules. Operation is subject to the following two conditions: (1) This device may not cause harmful interference, and (2) this device must accept any interference received , including interference that may cause undesired operation.

**[Note]** The manufacturer is not responsible for ANY interference, for example RADIO or TV interference, caused by unauthorized modifications to this equipment. Such modifications could void the user's authority to operate the equipment

**8 EU**

This product is CE marked according to the provision of the R&TTE Directive (99/5/EC). Here by MOVON Corporation, declares that this product is in compliance with the essential requirements and other relevant provisions of Directive 1999/5/EC. For further information please visit [www.movon.co.kr](http://www.movon.co.kr)

You can find the DoC from following website: [www.movon.co.kr/certificate/rtte](http://www.movon.co.kr/certificate/rtte)  
Please note that this product uses radio frequency bands not harmonized within EU. Within the EU this product is intended to be used in Austria, Belgium, Denmark, Finland, France, Germany, Greece, Ireland, Italy, Luxembourg, The Netherlands, Portugal, Spain, Sweden, United Kingdom and within EFTA in Iceland, Norway and Switzerland.

Bluetooth is a trademark owned by the Bluetooth SIG, Inc.

**9 Warranty**

The condition of this warranty and our responsibilities under this warranty are as follows: Supplier's warranty is non-transferable. And this warranty is limited to the original purchaser only.

- " You must be able to prove the date of original purchase of the unit with a dated receipt.
- " The warranty is not applicable if the product has been subject to physical abuse, improper installation, modification or repair by unauthorized third party.
- " The responsibility of supplier's products shall be limited to the repair or replacement of the product at it's sole discretion.
- " Specifically exempt from any warranty are limited-life consumable components subject to normal wear and tear such as batteries, decorates and other accessories.
- " A supplier will not take any responsibility if the failure of the unit has resulted from accident, abuse, misuse, or any unauthorized repair, modification or disassemble.
- " Modification and repair of the unit should be done by authorized and qualified service personnel, Center or returned to the manufacturer
- " This warranty gives you specific legal rights, and you may also have other rights which vary under local laws .

**10** WEEE Symbol Information**Correct Disposal of This Product**  
(Waste Electrical & Electronic Equipment)

( Applicable in the European Union and other European countries with separate collection systems )

This marking shown on the product or its literature, indicates that it should not be disposed with other household wastes at the end of its working life. To prevent possible harm to the environment or human health from uncontrolled waste disposal, please separate this from other types of wastes and recycle it responsibly to promote the sustainable reuse of material resources.

Household users should contact either the retailer where they purchased this product or their local government office, for details of where and how they can take this item for environmentally safe recycling.

Business users should contact their supplier and check the terms and conditions of the purchase contract. This product should not be mixed with other commercial wastes for disposal.

**IMPORTANT NOTE:** To comply with RF exposure requirements, this device may not be co-located with any other transmitter or antenna.