

Bluetooth Chip Antenna

◆ P/N : ABP6020A2

➤ Features

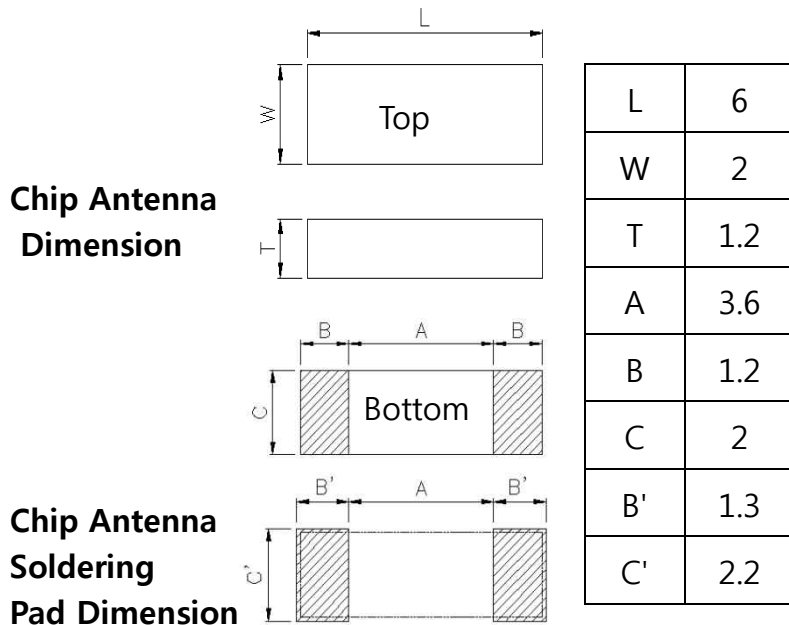
- ✓ These **ABP6020A2** is specially designed for Bluetooth.
- ✓ **High dielectric, Low loss** antenna was achieved by **new material**.
- ✓ By utilizing PCB assembly line, it can be mass produced at **low cost**

➤ Part Numbering(P/N)

A B P 6020 A 2
 ① ② ③ ④ ⑤ ⑥

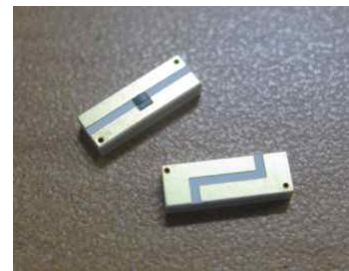
- ① Product company : A- ARRO
- ② Application : B -Bluetooth
- ③ Antenna type : P- PIFA
- ④ Chip antenna size : 6020 -6.0 x 2.0
- ⑤ Product thickness : A - 1.2 T
- ⑥ Revision number : 2 – Second edition

➤ Mechanical Dimension



(unit : mm , tolerance : ± 0.1)

Chip Antenna Real Product

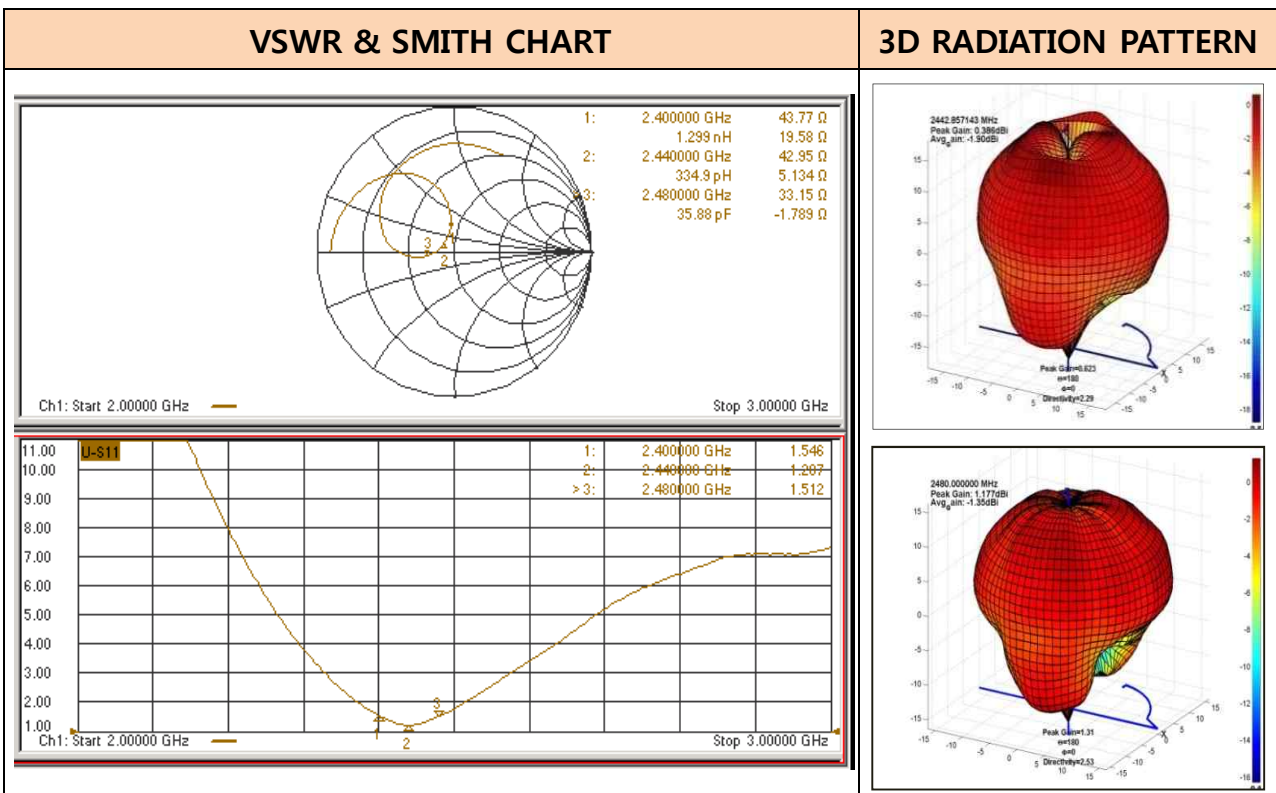


Bluetooth Chip Antenna

➤ Specification

Item		Specification				
Frequency range		2400~2483G				
VSWR		2:1 under				
Polarinzation		Linear				
Radiation		Omni-directional				
Impedance		50Ω				
Frequency [MHz]		2400	2420	2440	2460	2480
Gain[dBi]	Peak	1.9	2.0	1.6	1.1	1.2
	Average	-0.9	-0.7	-1.1	-1.3	-1.4
Efficiency(%)		81.5	85.0	77.7	74.0	73.2

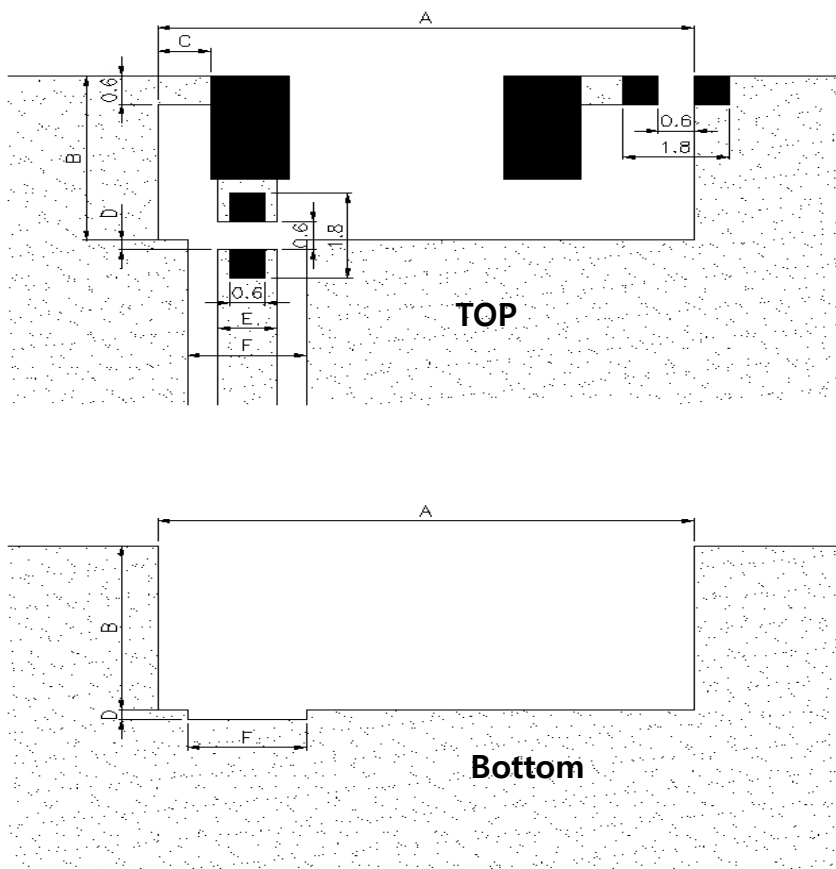
➤ Electrical Characteristics



Bluetooth Chip Antenna

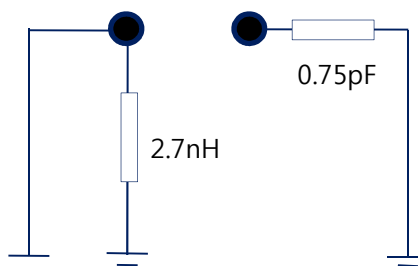
➤ Standard PCB Design & Matching Circuit

- ✓ Standard PCB Design (unit : mm , tolerance : ± 0.05)



A	9
B	3.5
C	0.9
D	0.2
E	1
F	2

- ✓ Matching Circuit



< Default Condition Equivalent Circuit >