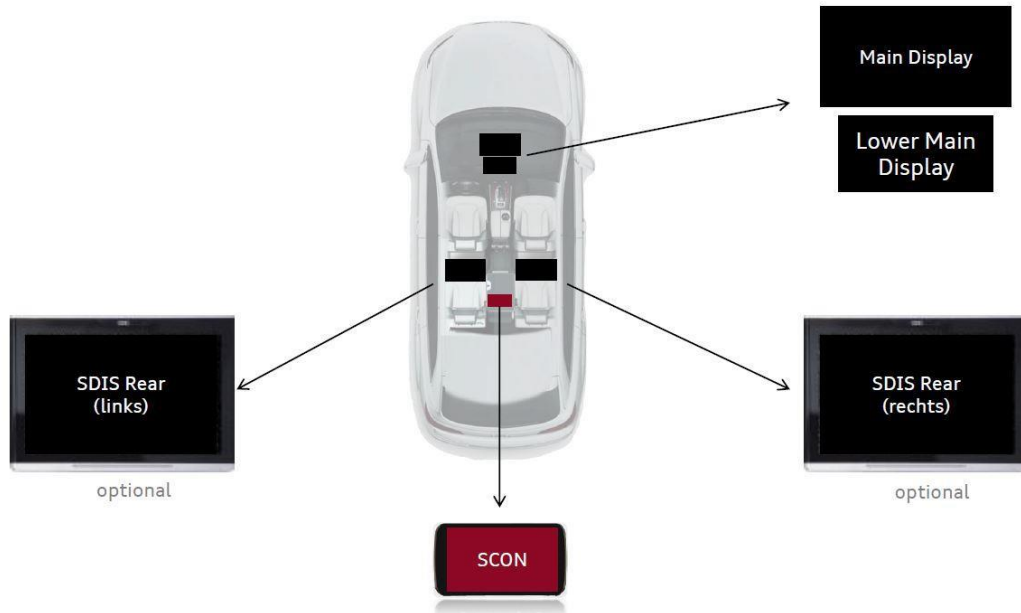


AUDI SCON2

Installation:

SCON2 is placed in the cars like in bellow picture



Description:

SCON2 is a Rear Seat Remote that can be used to control convenience and infotainment functions: air conditioner parameters or media playback, from the rear cabin.

CAUTION

– Prevent the Rear Seat Remote from coming into contact with liquids.

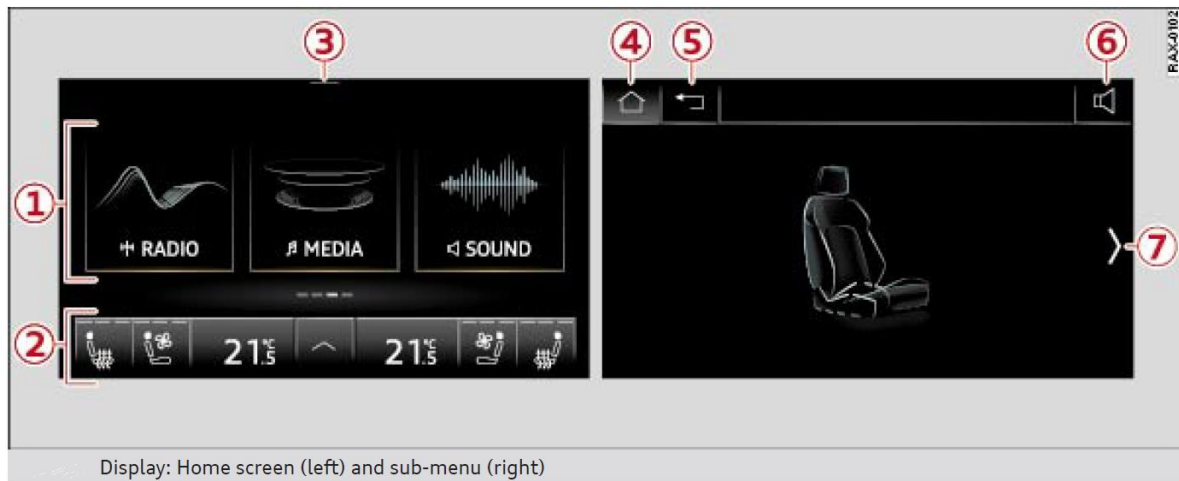
Note

- Please note that the Rear Seat Remote can only be used when the ignition is switched on and within range of the vehicle's active Wi-Fi hotspot.
- Please note that the Wi-Fi connection does not enable you to use the Internet.
- Signals from Bluetooth devices and Wi-Fi hotspots within range of the vehicle can interfere with the in-car Wi-Fi services. If several Bluetooth devices and Wi-Fi hotspots are within range of the vehicle, the data transmission rates may be reduced, the connection may be lost and there may be restrictions to media broadcasts.

Rear Seat Remote: Overview

Menus and symbols

Applies to: vehicles with Rear Seat Remote



	Symbol / marking	Description
①	Applications	Selecting and calling up applications. Depending on your vehicle's equipment, you may be able to operate the following applications: SEATS, LIGHTS, MEDIA, RADIO, TV, TELEPHONE, DEVICES, SOUND, SETTINGS, TIPS
②	Air conditioner	Setting and operating the air conditioner for the rear cabin
③	☰ Quick access bar	Swipe downwards once with your finger from the top edge of the screen to open the quick access bar. You can adjust the volume or access the telephone functions during a phone call
④	🏠 Home screen	Calling up the home screen
⑤	⏪ Back	Go back one step
⑥	Media playback	Adjusting volume, accessing telephone functions during a phone call
⑦	Select left/right for vehicle functions	Switching between different seats

Connecting with the MMI system

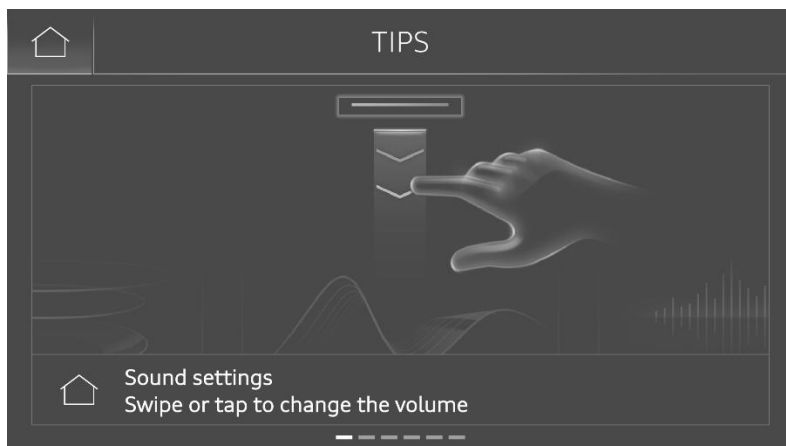
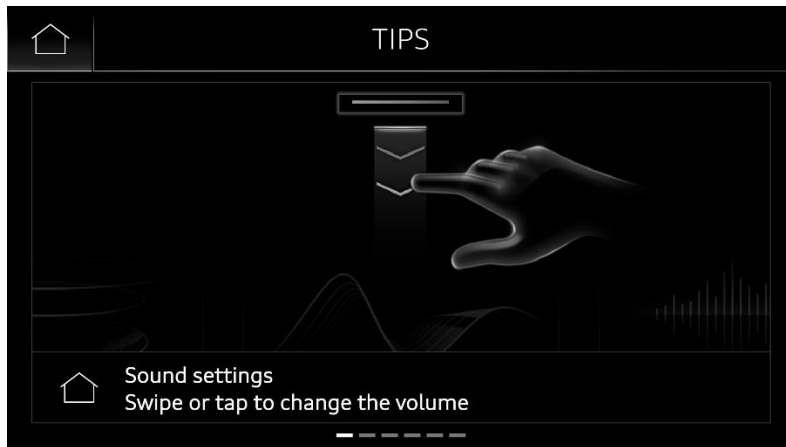
Applies to: vehicles with Rear Seat Remote

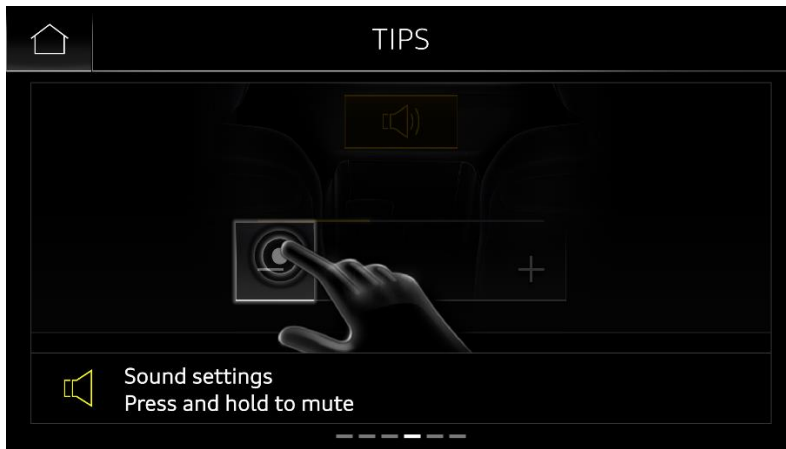
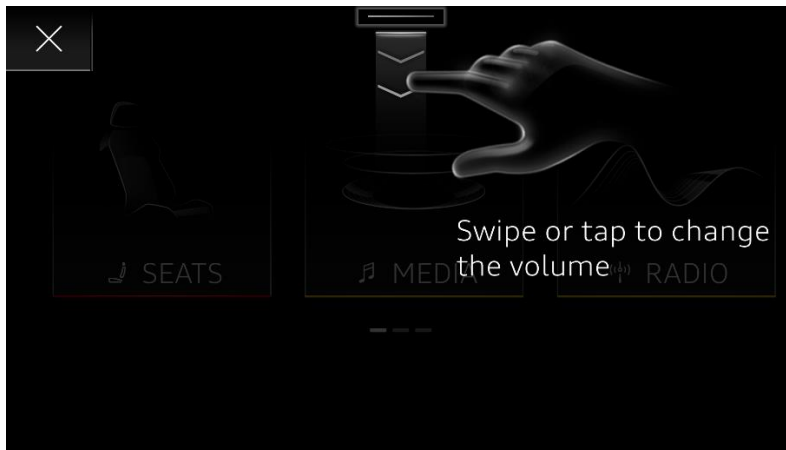
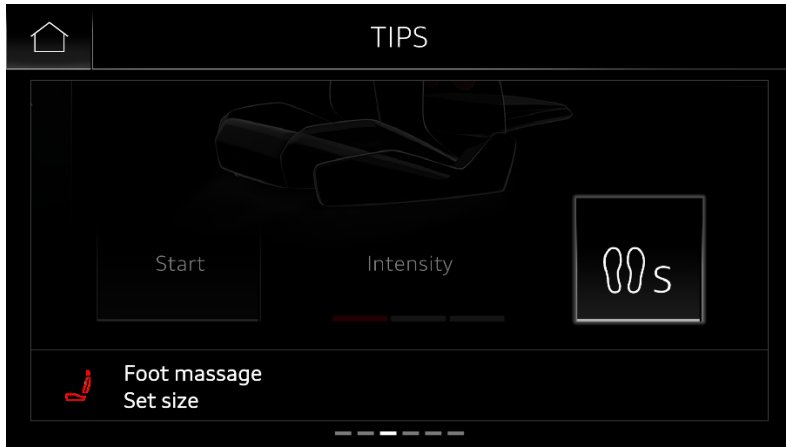
To use the Rear Seat Remote, you will need to connect it with the MMI system.

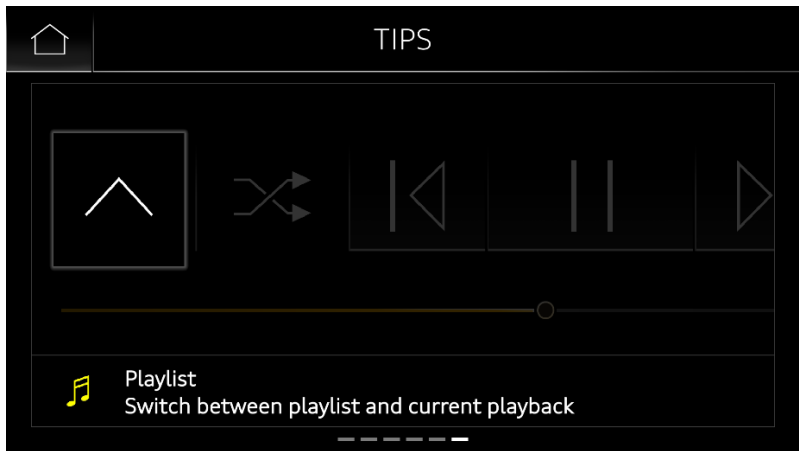
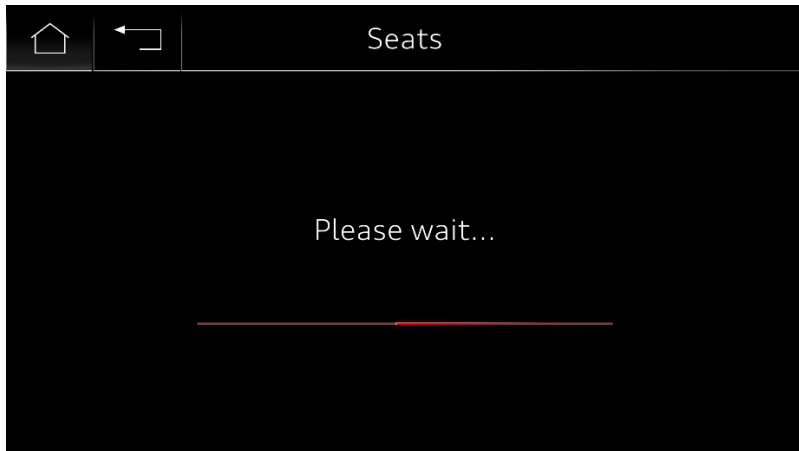
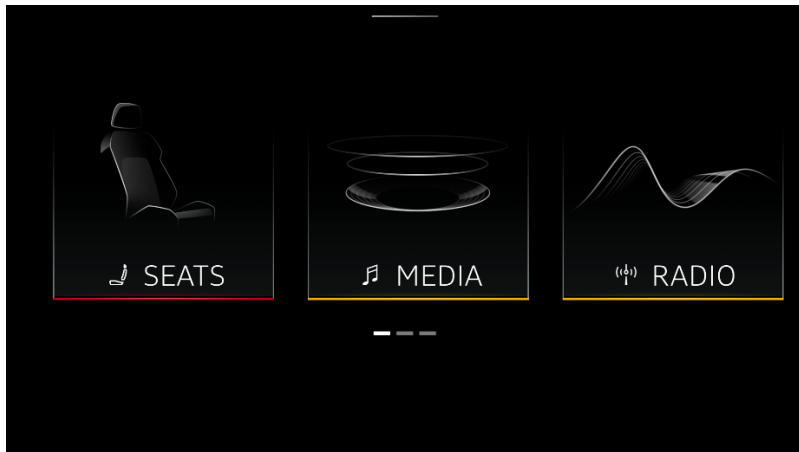
Important: The ignition must be switched on.

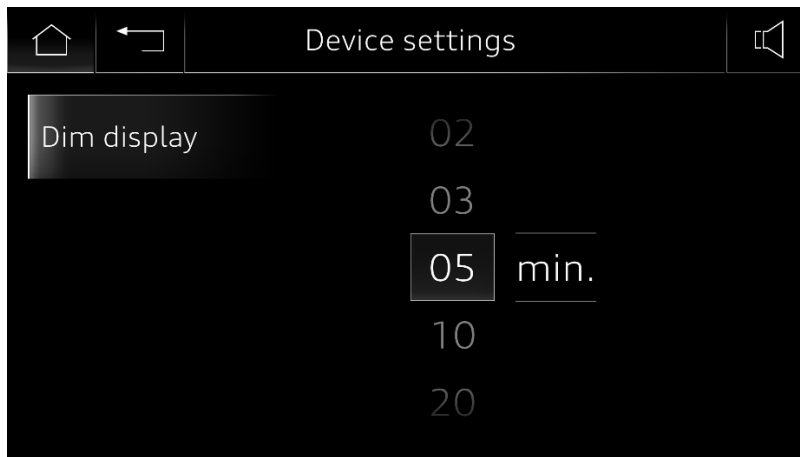
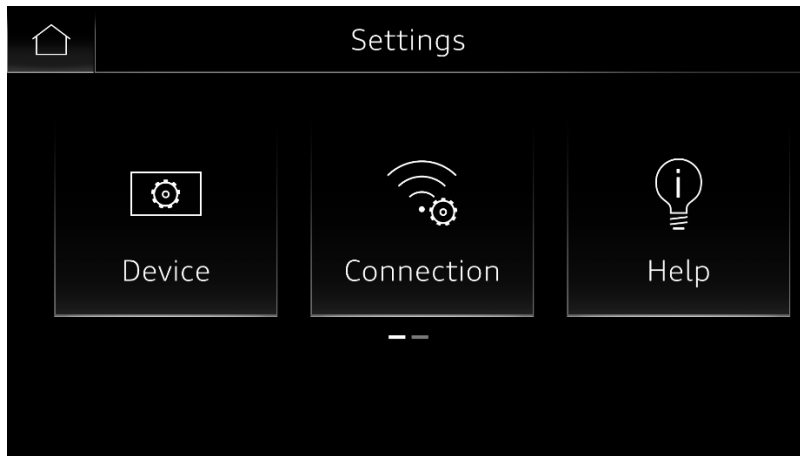
- Secure the Rear Seat Remote in its holder
The Rear Seat Remote will automatically connect to the MMI.

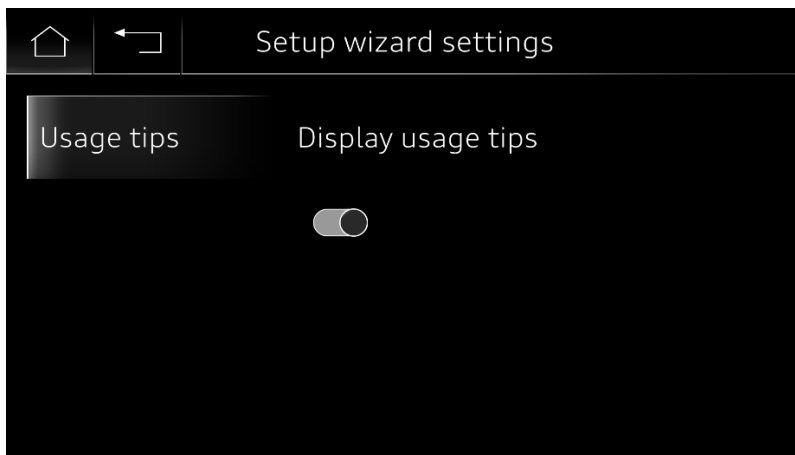
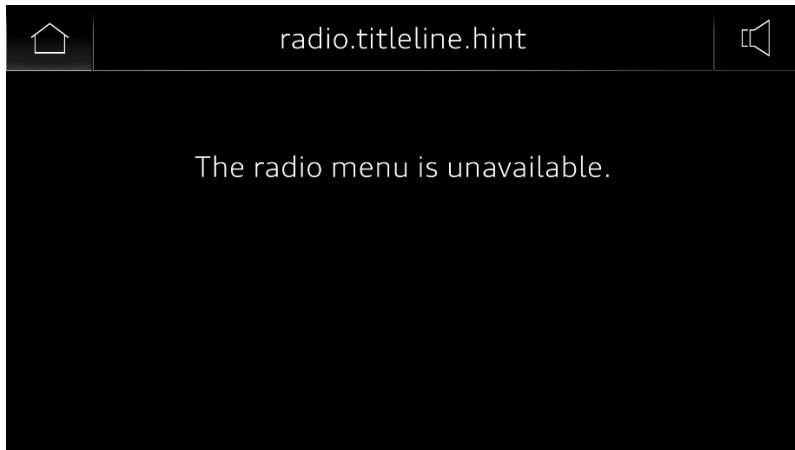
Bellow you can find Menus available for SCON2

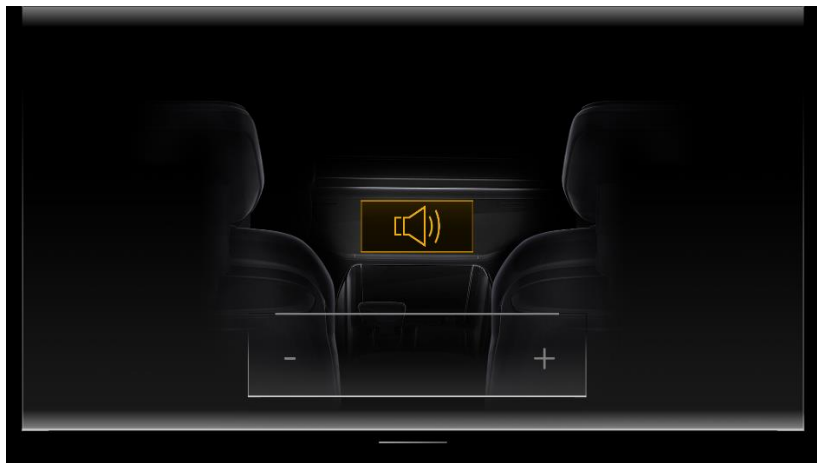
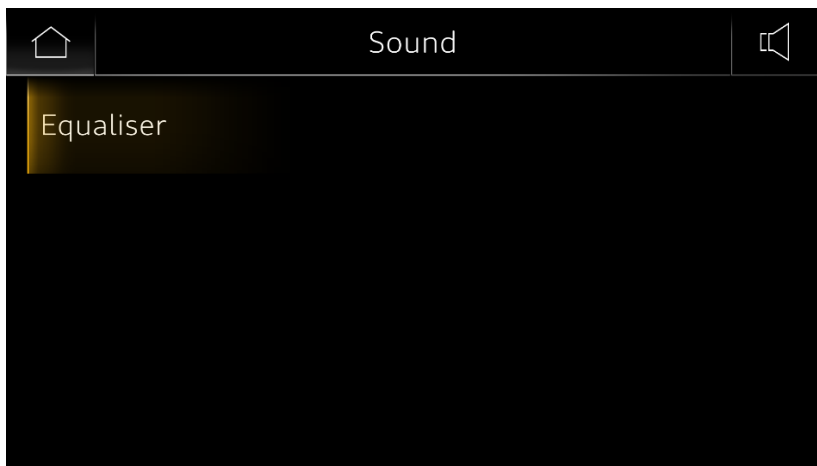
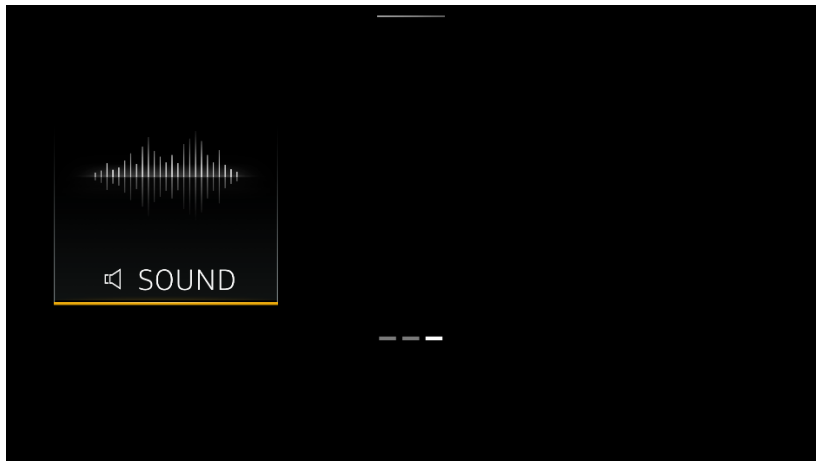


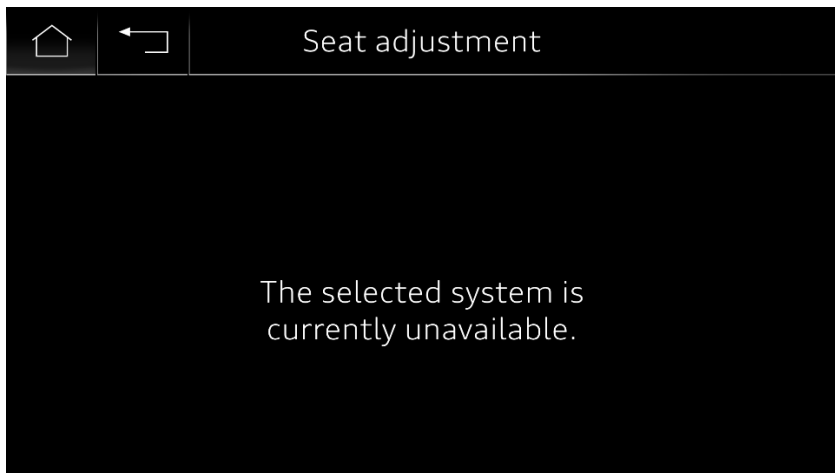
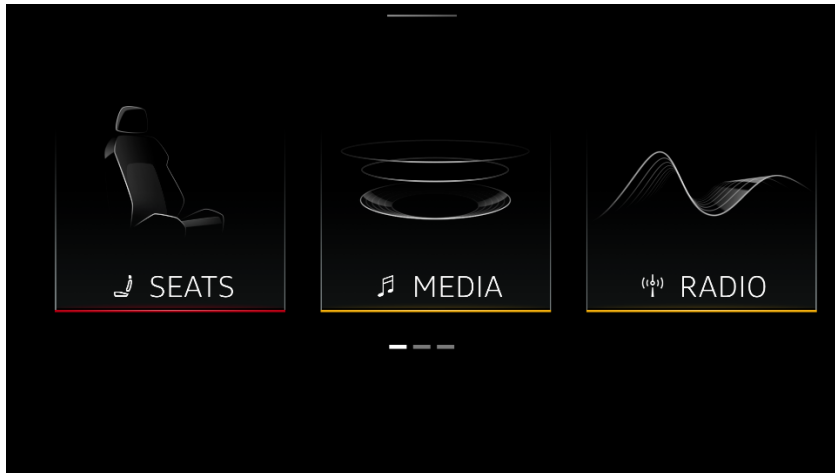












CERTIFICATION INFORMATION

For EU / EFTA countries:

Radio Equipment Directive – Declaration of Conformity

Hereby, Harman Becker Automotive Systems GmbH declares that the radio Equipment types **SCON2** is in compliance with Directive 2014/53/EU.

The full text of the EU declaration of conformity is available at the following internet

Address: (*1)



(*1) <http://www.harman.com/compliance>

WLAN: 2400 - 2483,5 MHz <20 dBm

WLAN: 5170 - 5835 MHz <20 dBm

Manufacturer:

Harman Becker Automotive Systems GmbH

Becker-Goering-Strasse 16

76307 Karlsbad,

Germany

取得審驗證明之低功率射頻器材，非經核准，公司、商號或使用者均不得擅自變更頻率、加大功率或變更原設計之特性及功能。低功率射頻器材之使用不得影響飛航安全及干擾合法通信；經發現有干擾現象時，應立即停用，並改善至無干擾時方得繼續使用。前述合法通信，指依電信管理法規定作業之無線電通信。低功率射頻器材須忍受合法通信或工業、科學及醫療用電波輻射性電機設備之干擾。

FCC / ISED statement

Model: SCON2

FCC ID: T8GSCON2

IC: 6434A-SCON2

Modification statement

SCON2 has not approved any changes or modifications to this device by the user. Any changes or modifications could void the user's authority to operate the equipment.

SCON2 n'approuve aucune modification apportée à l'appareil par l'utilisateur, quelle qu'en soit la nature. Tout changement ou modification peuvent annuler le droit d'utilisation de l'appareil par l'utilisateur.

Interference statement

This device complies with Part 15 of the FCC Rules and Industry Canada licence-exempt RSS standard(s). Operation is subject to the following two conditions: (1) this device may not cause interference, and (2) this device must accept any interference, including interference that may cause undesired operation of the device.

Le présent appareil est conforme aux CNR d'Industrie Canada applicables aux appareils radio exempts de licence. L'exploitation est autorisée aux deux conditions suivantes : (1) l'appareil ne doit pas produire de brouillage, et (2) l'utilisateur de l'appareil doit accepter tout brouillage radioélectrique subi, même si le brouillage est susceptible d'en compromettre le fonctionnement.

Wireless notice:

This device complies with FCC/ISED radiation exposure limits set forth for an uncontrolled environment and meets the FCC radio frequency (RF) Exposure Guidelines and RSS-102 of the ISED radio frequency (RF) Exposure rules. This transmitter must not be co-located or operating in conjunction with any other antenna or transmitter.

WARNING! This device must be installed and used at a distance >5 cm from the body.

Le présent appareil est conforme à l'exposition aux radiations FCC / ISED définies pour un environnement non contrôlé et répond aux directives d'exposition de la fréquence de la FCC radiofréquence (RF) et RSS-102 de la fréquence radio (RF) ISED règles d'exposition. L'émetteur ne doit pas être colocalisé ni fonctionner conjointement avec à autre antenne ou autre émetteur.

ATTENTION! Ce produit doit être installé de façon à garantir une distance minimale de séparation de 5 cm ou plus de tout corps humain

FCC Class B digital device notice

This equipment has been tested and found to comply with the limits for a Class B digital device, pursuant to part 15 of the FCC Rules. These limits are designed to provide reasonable protection against harmful interference in a residential installation. This equipment generates, uses and can radiate radio frequency energy and, if not installed and used in accordance with the instructions, may cause harmful interference to radio communications. However, there is no guarantee that interference will not occur in a particular installation. If this equipment does cause harmful interference to radio or television reception, which can be determined by turning the equipment off and on, the user is encouraged to try to correct the interference by one or more of the following measures:

- Reorient or relocate the receiving antenna.
- Increase the separation between the equipment and receiver.
- Connect the equipment into an outlet on a circuit different from that to which the receiver is connected.
- Consult the dealer or an experienced radio/TV technician for help.

CAN ICES-3 (B) / NMB-3 (B)

This Class B digital apparatus complies with Canadian ICES-003.

Cet appareil numérique de classe B est conforme à la norme canadienne ICES-003.