

## RTX3471 Antenna Spec

There are 3 identical antennas on the RTX3471. Two are used for the Smart Hopping 2 radio, while one is used for BLE.

Type: Stamped metal

Frequency range : 2.4 – 2.4835 GHz

Gain (peak):

Approx 4 dBi for Smart Hopping Antenna

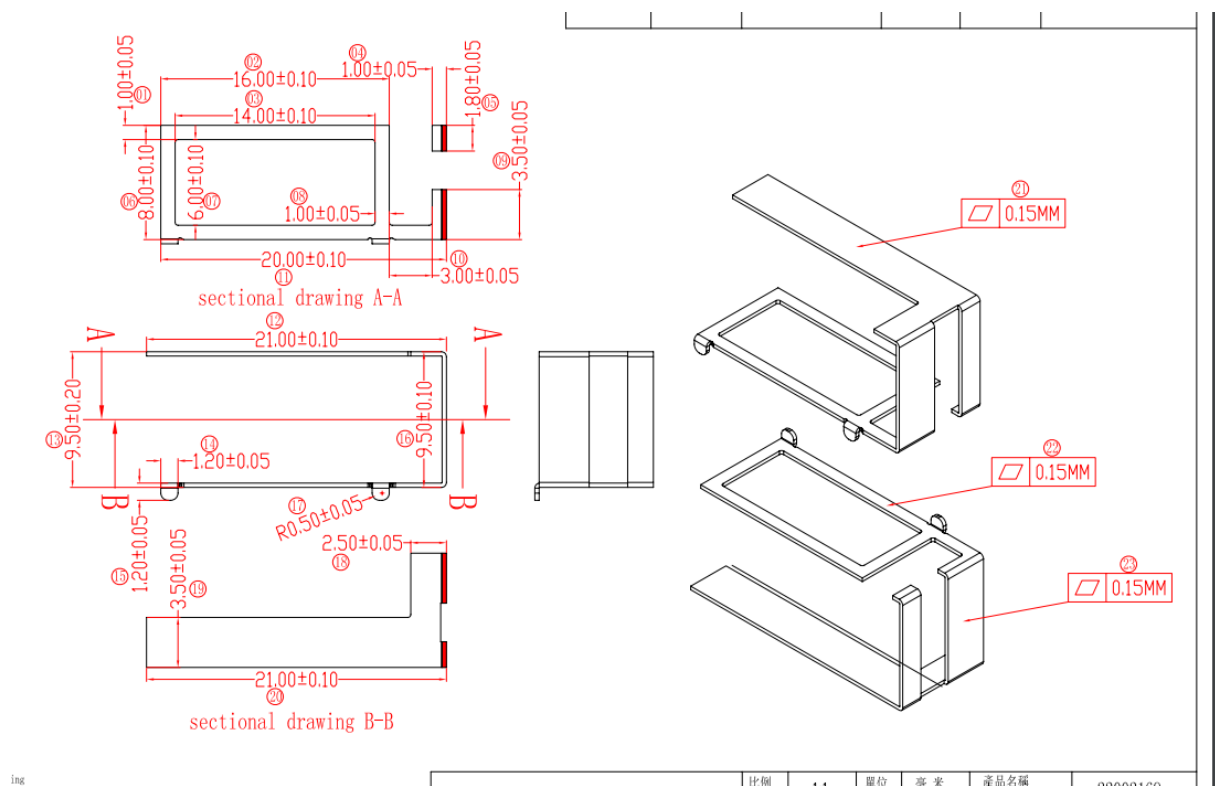
Approx 5 dBi for BLE Antenna

Manufacturer: RTX Hong Kong Ltd.

Address: 8/F Corporation Square, 8 Lam Lok Street, Kowloon Bay, Hong Kong

Model: RTX3471

### 1.1 Physical data



RTX A/S

Ref. : FA

Doc. : Antenna Spec\_1\_1.docx

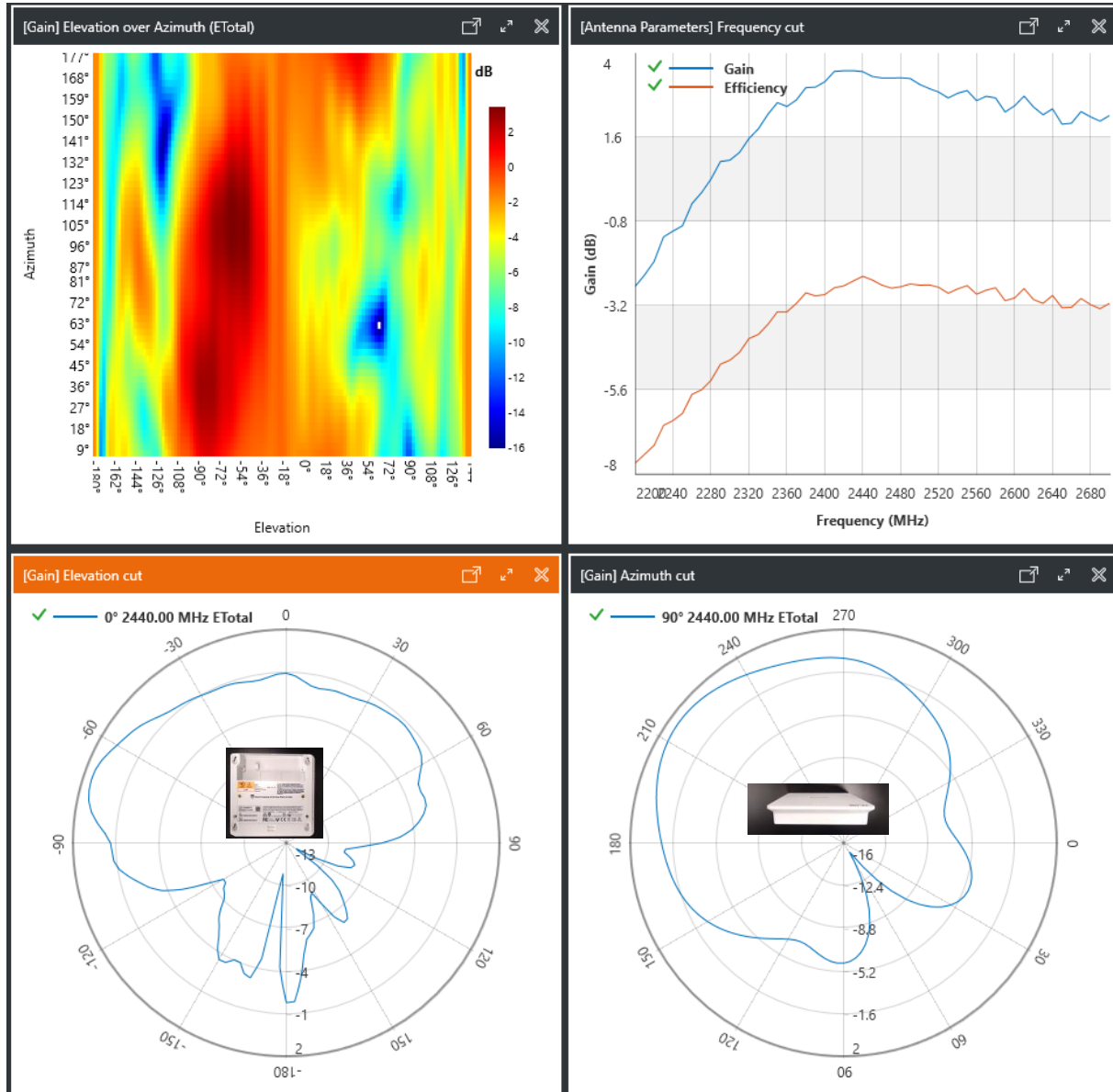
Date : 16-sep-2024

Page: 1 of 4 page(s)

Reviewed by:

## 1.2 Antenna Pattern

### 1.2.1 Smart Hopping Antena A2



RTX A/S

Ref. : FA

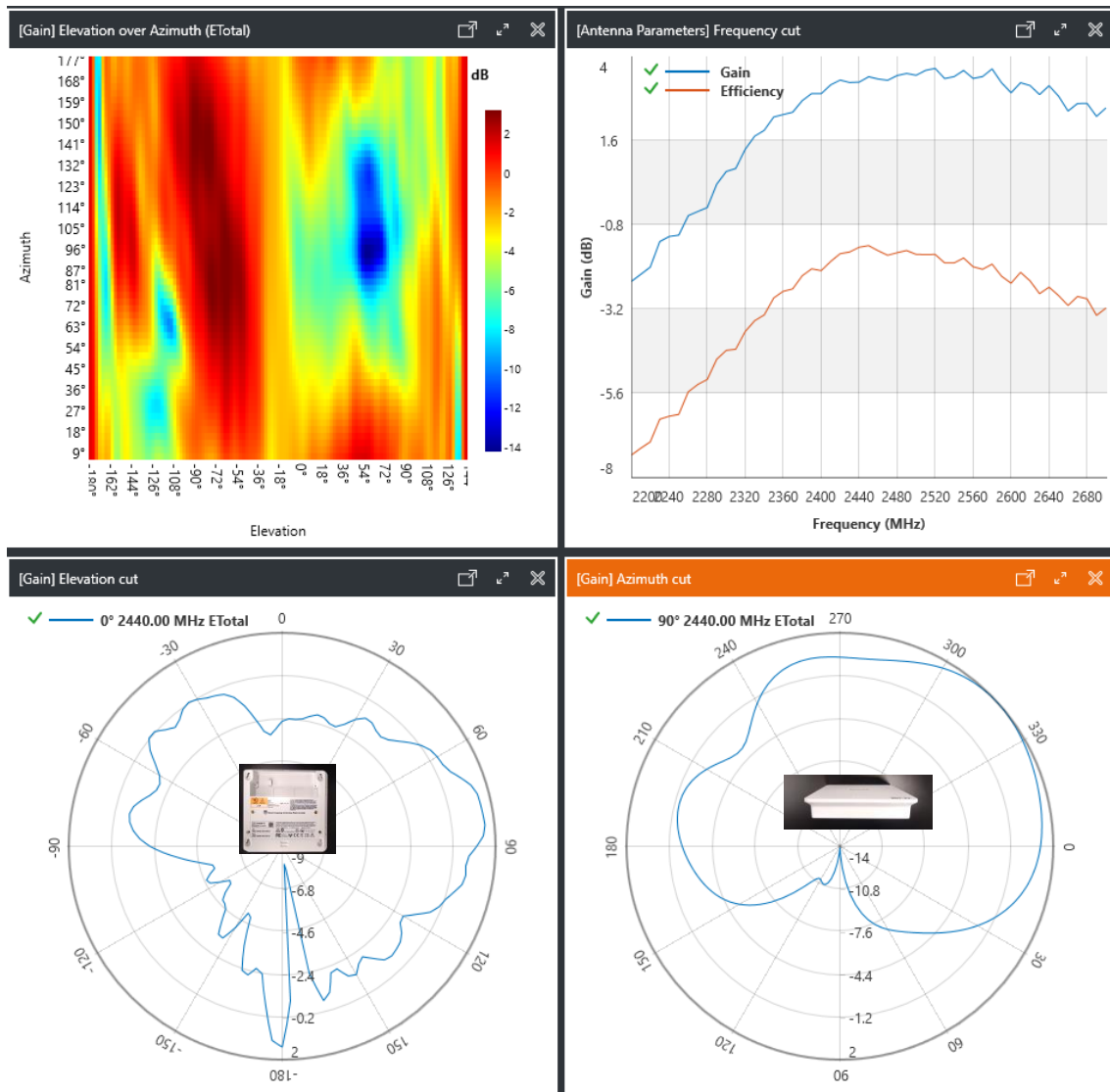
Doc. : Antenna Spec\_1\_1.docx

Date : 16-sep-2024

Page : 2 of 4 page(s)

Reviewed by:

## 1.2.2 Smart Hopping Antenna A3



RTX A/S

Ref. : FA

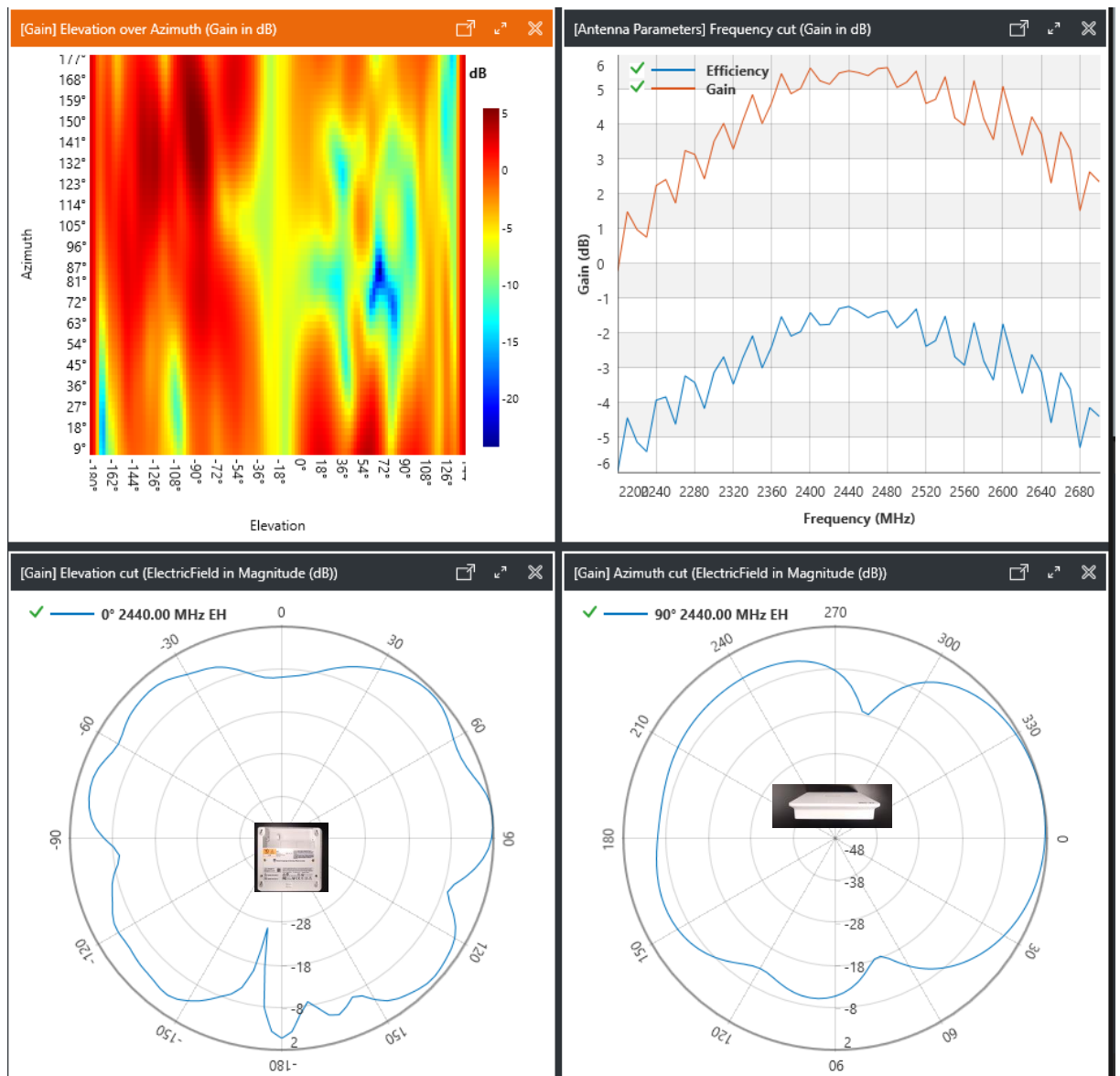
Doc. : Antenna Spec\_1\_1.docx

Date : 16-sep-2024

Page: 3 of 4 page(s)

Reviewed by:

## 1.3 BLE Antenna



RTX A/S

Ref. : FA

Doc. : Antenna Spec\_1\_1.docx

Date : 16-sep-2024

Page : 4 of 4 page(s)

Reviewed by: