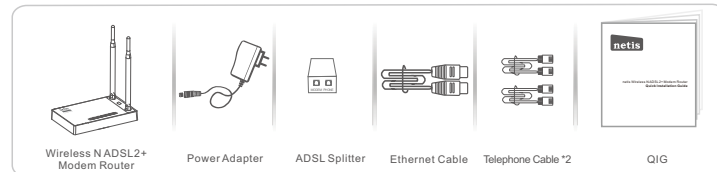




netis 300Mbps Wireless N VDSL2+ Modem Router
Quick Installation Guide



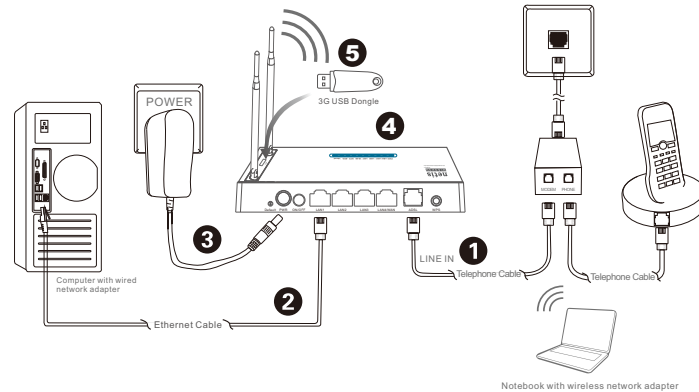
1.Package Contents



* This QIG is for all netis 150Mbps/300Mbps wireless N ADSL2+ modem routers, including models-DL4310, DL4310D, DL4311, DL4311D, DL4312, DL4312D, DL4312U, DL4312UD, DL4322, DL4322D, DL4323, DL4323D, DL4323U, DL4323UD, etc.

* The product model shown in this QIG is DL4323U, as an example.

2.Hardware Connection



2.1. Connect the ADSL line with the attached telephone cable.

- Connect the **LINE** port of ADSL Splitter to the wall jack with a telephone cable.
- Connect the **MODEM** port of ADSL Splitter to the **ADSL** port on netis Modem Router with the other telephone cable.
- Connect your telephone to the **PHONE** port of ADSL Splitter.

Tip: If no telephone is needed, please connect the ADSL port on netis Modem Router to the wall jack with the phone cable directly.

2.2. Connect your computer to one of the **LAN** ports on netis Modem Router with an Ethernet cable.

2.3. Plug the provided Power Adapter into the **PWR** jack of netis Modem Router and the other end to a standard electrical socket.

2.4. Wait for one minute then check if the LED indicators of the Modem Router display normally.

- **PWR**: Solid on.
- **ADSL**: Solid on when the modem is synchronized.
- **LAN**: Solid on or flashing if the corresponding LAN port is connected.

Tip: If the LED indicators display abnormally, please check if all the cables are well connected. If the ADSL LED is off or flashing, please contact your ISP (Internet Service Provider) to check the Internet connection.

2.5 (Optional Step) Connect your 3G dongle or USB storage to the USB port on the modem.

(**Note:** DL4312U/DL4312UD/DL4323U/DL4323UD support additional USB port for you to connect 3G dongle for 3G network sharing; or connect USB storage device for storage sharing; or connect USB printer* for printing sharing.)

* For the supported USB printer model list, please check from www.netis-systems.com.

3. Configure the Modem Router via Web Management Page

3.1. Necessary Information before the configuration.

For a successful setup, you're recommended to contact your ISP first and ask for the following network parameters which will be required during the configuration procedures.

- a. VPI/VCI;
- b. Connection Type;
- c. Encapsulation Type (Optional);
- d. Username & Password (Optional, according to your Connection Type).

3.2. Set the IP address of the wired network adapter on your computer as "Automatic" or "DHCP".

For Windows 8/ 7/Vista and above

- 1) Go to "Start" (Win 7/Vista)/ "Settings" (Other system)> "Control Panel".
- 2) Left-click on "Network and Internet"> "Network and Sharing Center"> "Manage network connections" (Win Vista)/ "Change adapter settings" (Other system).
- 3) Right-click on "Local Area Connection" and left-click on "Properties".
- 4) Double-click on "Internet Protocol Version 4 (TCP/IPv4)".
- 5) Select "Obtain an IP address automatically" and "Obtain DNS server address automatically" then left-click on "OK".

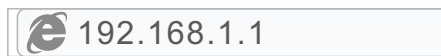
For Windows XP/2000

- 1) Go to "Start"> "Control Panel".
- 2) Left-click on "Network and Internet Connections"> "Network Connections".
- 3) Right-click on "Local Area Connection" and left-click on "Properties".
- 4) Double-click on "Internet Protocol (TCP/IP)".
- 5) Select "Obtain an IP address automatically" and "Obtain DNS server address automatically" then left-click on "OK".

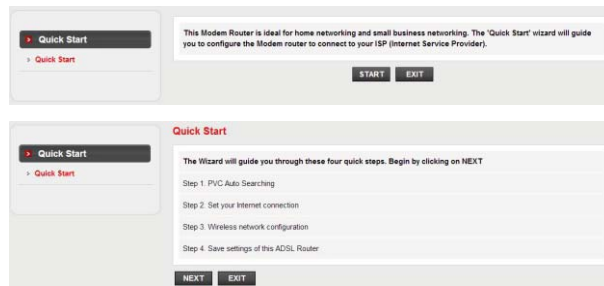
For MAC OS

- 1) Click on the "Apple" menu> "System Preferences".
- 2) Click on the "Network" icon.
- 3) Click on "Ethernet" in the left side box and click on "Advanced" in the lower right corner.
- 4) In the top options, select "TCP/IP".
- 5) In the pull-down menu next to "Configure IPv4" select "Using DHCP".
- 6) Click "OK" then "Apply".

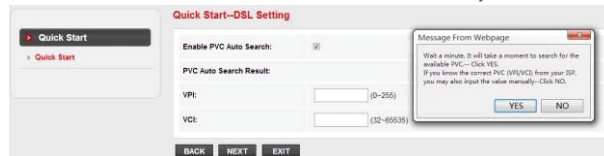
- 3.3. Open your browser and type **192.168.1.1** in the address field. Then type in the username **guest** and password **guest** to login the web management page.



- 3.4. Under “**Quick Start**” page, left-click on “**START**” and the Wizard will guide you through the following four steps. Then left-click on “**NEXT**”.



- 1) Set the PVC (VPI/VC) value.
Left-click “**Cancel**” if you know the PVC (VPI/VC) from your ISP, then input the value manually.
If you don't know the exact value, please left-click on “**OK**”, and then it will take less than one minute to search for the available PVC automatically.



Once the PVC value is input or shows up in the following page, left-click on “**NEXT**”.



2) Select the Internet Connection Type given by your ISP, then left-click on **"NEXT"**.

Quick Start--ISP Connection Type

Select the Internet connection type to connect to your ISP. Click NEXT to continue.

- ☒ **Dynamic IP Address** Choose this option to obtain a IP address automatically from your ISP.
- ☐ **Static IP Address** Choose this option to set static IP information provided to you by your ISP.
- ☒ **PPPoE/PPPoA** Choose this option if your ISP uses PPPoE/PPPoA. (For most DSL users)
- ☐ **Bridge Mode** Choose this option if your ISP uses Bridge Mode.

BACK NEXT EXIT

- If **"Dynamic IP Address"** is selected, select the **Connection Type** defined by your ISP and the router will automatically receive the IP parameters from your ISP.
- If **"Static IP Address"** is selected, enter the **IP Address/Subnet Mask/ISP Gateway/DNS Servers/Connection Type** given by your ISP.
- If **"PPPoE/PPPoA"** is selected, input the **Username/ Password** and select the **Connection Type** given by your ISP.
- If **"Bridge Mode"** is selected, select the **Connection Type** defined by your ISP.

3) Configure your wireless network name (SSID) and password, and then left-click on **"NEXT"**.

Quick Start--Wireless Setting

You may enable/disable Wireless, change the Wireless SSID and Authentication type in this page. Click NEXT to continue.

Access Point: ☒ Activated ☐ Deactivated

SSID:

Broadcast SSID: ☒ Yes ☐ No

Authentication Type:

Password: (Please enter ASCII characters between 8 and 63 or Hexadecimal characters between 8 and 64.)

BACK NEXT EXIT

4) Left-click on **"NEXT"** and then **"CLOSE"** to save the current settings. **Quick Start** will be finished.

Quick Start Completed!!

The Setup Wizard has completed. Click on BACK to modify changes or mistakes. Click NEXT to save the current settings.

BACK NEXT EXIT

Quick Start Completed!!

Saved Changes!

CLOSE

Tip 1:

Default IP address: **192.168.1.1** Default login username: **guest**
 Default SSID: **netis** Default login password: **guest**
 Default wireless password: **password**

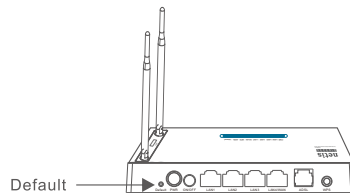
Tip 2:

After the basic Internet settings, you may open some popular websites to check your Internet connection. If you cannot access the Internet, please refer to the instructions in **"Troubleshooting"**.

4. Troubleshooting

Q How do I restore my netis Modem Router's configuration to its default settings?

A With the router powered on, use a pin to press and hold the **Default** button on the rear panel for 8 to 10 seconds before releasing it. The router will reboot and all configurations are back to factory default.



Q What can I do if my Internet cannot be accessed?

A

- 1) Check to verify the hardware connections are correct.
Please refer to the "**Hardware Connection**" step.
- 2) Login to netis Modem Router's web management page and ensure that you input the correct network parameters.
You'd better contact your ISP to make sure that the VPI/VCI, Connection Type, Username & Password are correct.
- 3) If you still cannot access the Internet, please restore your Modem Router to its factory default settings and try the "**Quick Start**" again.
- 4) Please feel free to contact netis Technical Support if possible.

Q How to apply the USB function on DL4312U/DL4312UD/DL4323U/DL4323UD?

A 1) Connect 3G dongle

Check the supported 3G dongle model list from www.netis-systems.com and make sure that your 3G dongle model is in the compatibility list.
Click "**Setup**"> "**WAN**"> "**3G**" to enable **3G WAN** and input the **Dial Number/APN/Username/Password** from your mobile ISP, then click **Apply Changes**.

3G Settings
This page is used to configure the parameters for your 3G network access.

3G WAN: ☐ Disable ☒ Enable

PIN Code:

APN:

Dial Number:

Authentication:

User Name:

Password:

Connection Type:

Idle Time(min):

NAPT: ☐ Disable ☒ Enable

Default Route: ☐ Disable ☒ Enable

MTU:

IP Type:

[Apply Changes](#) [Reset](#)

2) Connect USB storage device

This function is based on FTP service and there's no need to configure the netis router. Please just download and install third-party FTP software from Internet for your computer. And the FTP software will automatically detect the connected USB storage device for access.

3) Connect USB printer

Check the supported USB printer model list from www.netis-systems.com and make sure that your printer model is in the compatibility list.

Click "**Service**"> "**USB Printer**" to enable **Printer Server** and **Apply Changes**.

Generally, there's no need to change the other settings.

USB Printer
This page is used to configure print server.

Print Server: ☒ Disable ☐ Enable

Printer Listen Port:

Printer Name:

Print Server URL:

[Apply Changes](#) [Reset](#)

Caution!

This equipment should be installed and operated with a minimum distance of 20 centimeters between the radiator and your body.

This equipment generates, uses and can radiate radio frequency energy and, if not installed and used in accordance with the instructions, may cause harmful interference to radio communications. However, there is no guarantee that interference will not occur in a particular installation. If this equipment does cause harmful interference to radio or television reception, which can be determined by turning the equipment off and on, the user is encouraged to try to correct the interference by one of the following measures:

Reorient or relocate the receiving antenna.

Increase the separation between the equipment and receiver.

Connect the equipment into an outlet on a circuit different from that to which the receiver is connected.

Consult the dealer or an experienced radio/TV technician for help.

To assure continued compliance, any changes or modifications not expressly approved by the party responsible for compliance could void the user's authority to operate this equipment. (Example - use only shielded interface cables when connecting to computer or peripheral devices).

FCC Radiation Exposure Statement

This equipment complies with FCC RF radiation exposure limits set forth for an uncontrolled environment. This equipment should be installed and operated with a minimum distance of 20 centimeters between the radiator and your body.

This device complies with Part 15 of the FCC Rules. Operation is subject to the following two conditions:

(1) This device may not cause harmful interference, and

(2) This device must accept any interference received, including interference that may cause undesired operation.

This transmitter must not be co-located or operating in conjunction with any other antenna or transmitter.

NETIS SYSTEMS CO., LTD.
www.netis-systems.com
MADE IN CHINA

