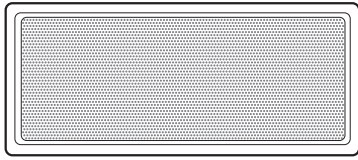



BUDDY



1x  Charging cable

1x  Audio cable

1x  Charger



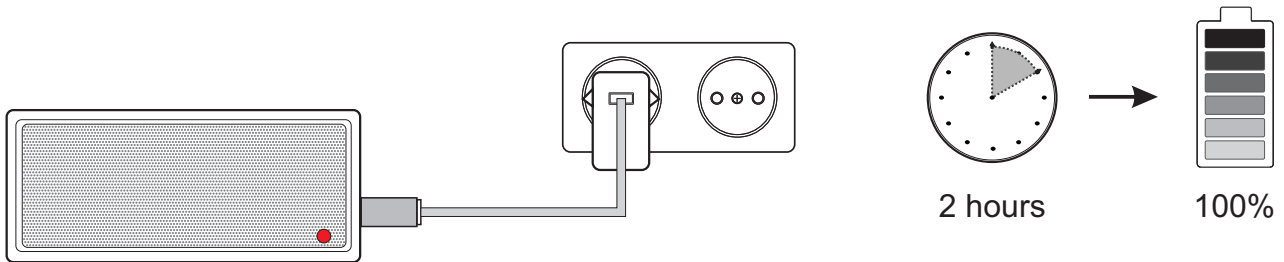
Jensen®
SCANDINAVIA

1

Charging your speaker

Please charge your speaker for 2 hours.

The front LED light will lit red when charging and then turn off when fully charged.
You can use the speaker while charging.

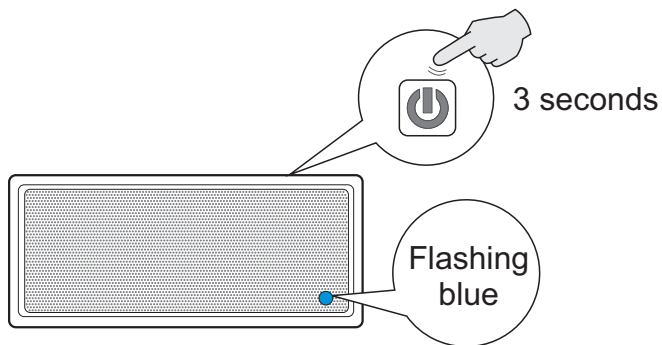


2

Power on your speaker

Press and hold the power button for 3 seconds.

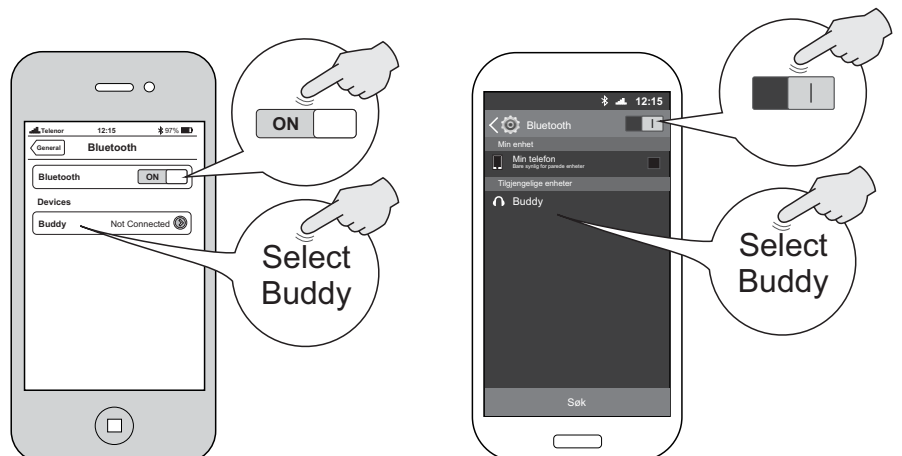
Your speaker is now ready to be connected (LED flashing blue on front)



3

Connect your device

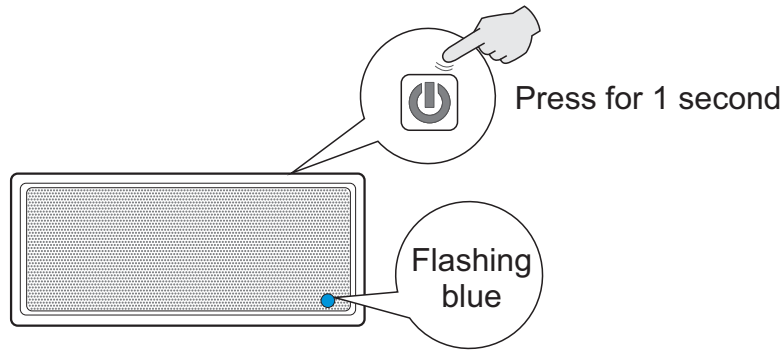
From your bluetooth device open the bluetooth menu and connect to Buddy.



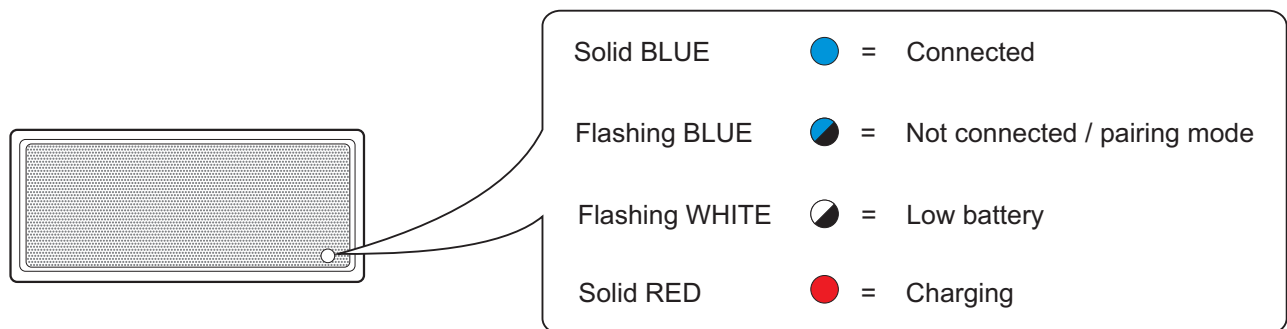


Disconnect

You can disconnect a connected bluetooth device by pressing the power button for 1 second. The speaker is now ready to be connected by a new bluetooth device. (LED flash blue)



LED light



Important information

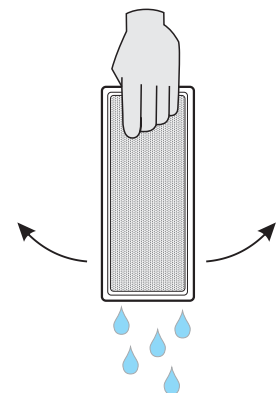
- A fully charged battery gives up to 12 hours playback time when used at 50% sound level.
- The speaker will switch off automatically if not used for 10 minutes.



- The speaker are dust protected and can resist water immersion up to 1m for 5 minutes.
- The speaker can be used in rainy conditions.
- If the speaker has been immersed in water, please drain by shaking the speaker with connectors facing down.

Warranty

Your speaker has 3 years warranty from the date of purchase. Water proof warranty (immersed in water) is limited to 1 year.



**FCC warning :**

This device complies with part 15 of the FCC Rules. Operation is subject to the following two conditions: (1) This device may not cause harmful interference, and (2) this device must accept any interference received, including interference that may cause undesired operation.

Any Changes or modifications not expressly approved by the party responsible for compliance could void the user's authority to operate the equipment.

Note: This equipment has been tested and found to comply with the limits for a Class B digital device, pursuant to part 15 of the FCC Rules. These limits are designed to provide reasonable protection against harmful interference in a residential installation. This equipment generates uses and can radiate radio frequency energy and, if not installed and used in accordance with the instructions, may cause harmful interference to radio communications. However, there is no guarantee that interference will not occur in a particular installation. If this equipment does cause harmful interference to radio or television reception, which can be determined by turning the equipment off and on, the user is encouraged to try to correct the interference by one or more of the following measures:

- Reorient or relocate the receiving antenna.
- Increase the separation between the equipment and receiver.
- Connect the equipment into an outlet on a circuit different from that to which the receiver is connected.
- Consult the dealer or an experienced radio/TV technician for help.

FCC Radiation Exposure Statement:

This equipment complies with FCC RF radiation exposure limits set forth for an uncontrolled environment.

This transmitter must not be co-located or operating in conjunction with any other antenna or transmitter.