

Urovo



H1000 User Manual Enterprise Tablet

1. Product overview

1.1 Introduction



This is an Android-based enterprise tablet.

1.2 Features

- **Large screen**
7-inch display with WSVGA 1024 x 600 resolution.
- **16GB storage capacity**
- **Well connected**
- **Support voice prompt function**
- **Advertising broadcasting**
Administrator can customize text or pictures, then publish them on the device screen.

2. Equipment hardware

2.1 Appearance Introduction

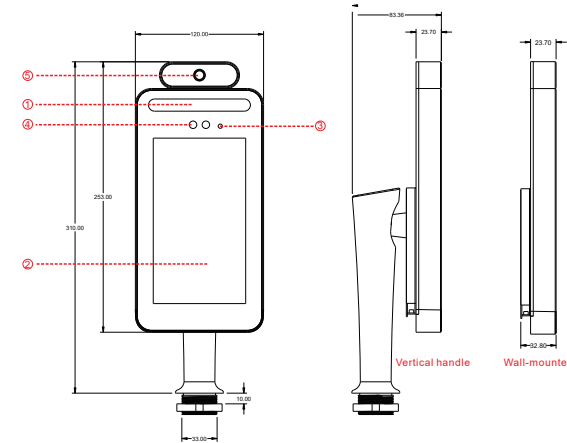


Figure 2-1 Component Appearance Diagram

- ① Supplementary lamp
- ② Display screen
- ③ Infrared lamp
- ④ Camera
- ⑤ Camera

2.2 Product Specifications

Description	Specification
OS system	Android 7.1
Display screen	7-inch, 16:9, 1024 × 600 pixel
Power supply	DC 12V/2A (external power supply only)
Operation temperature	-20℃ ~ 60℃
Application	Indoor and outdoor
Dimension	120mm (L) x 253mm (W) x 32.8mm (T) (Wall-mounted)
Camera	2M pixels 1080P
Wi-Fi	2.4G 802.11b/g/n
Ethernet	100Mbps Network

3. Installation Guide

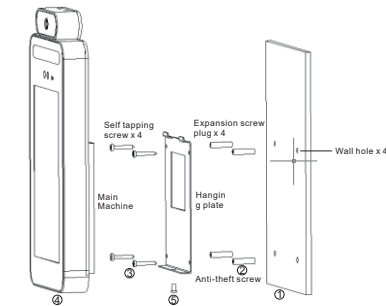
Installation Environmental Requirement:

Avoid direct sunlight to lens and display, avoid lit shots. Outdoor installation, visor to be installed on the device.

Before installation:

This device is only suitable for installation on a concrete or non-flammable surface.

Wall-mounted installation

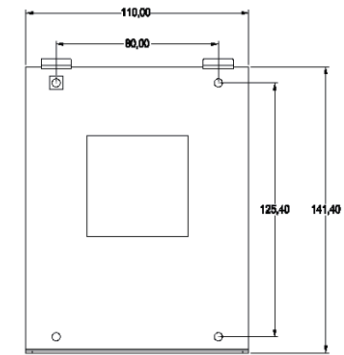


Installation PrecEDURE: ①—②—③—④—⑤
Note: ① Wall drilling ② Insert expansion screw ③ Install hanging plate ④ Install main machine ⑤ Lock anti-thief screw

Step1:

To dig four holes in the wall according to the following schematic size, and insert screws into the dowel in the hole.

Note: reserve space on the wall for wire connection.



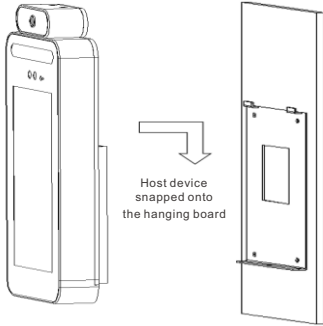
Step2:

Fix the hanging plate on the wall.



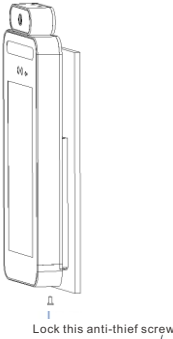
Step 3:

Fix the device on the plate.



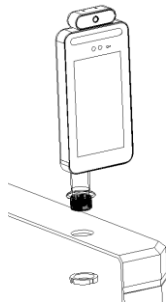
Step 4:

Install anti-theft screws.



Vertical Installation Instruction:

As shown in the figure following, first make firstly, punch holes in the plane which plans to be installed. installed, the diameter of the hole is 34~35mm. After inserting the vertical handle into the machine, lock the screws from below of the plane.



4. Software Features Operation Instruction

Notes :

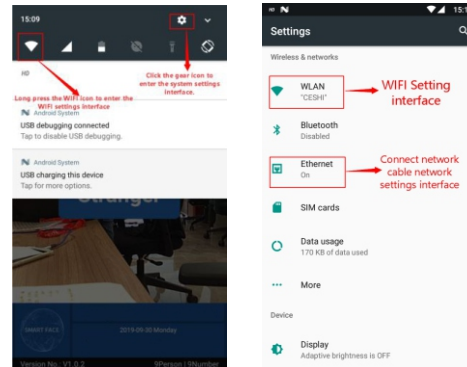
- Connect mouse to the USB port, left click of a mouse is for confirmation and right click of that is for return.
- After connecting to network, the upper left corner of the main screen will show the IP address.
- The computer or mobile phone for setting H1000, need connect to same IP.

4.1 Network connecting settings

4.1.1 Using Wi-Fi network connection

Procedure

1. Power on, plug mouse, drag down top bar (move cursor to top bar, left click and drag down).
2. Click Wi-Fi icon to enter the Wi-Fi settings interface.
3. Or click gear icon, enter the system interface as (FIG. 2), click to select WLAN (Wi-Fi network), is provided into the Wi-Fi.

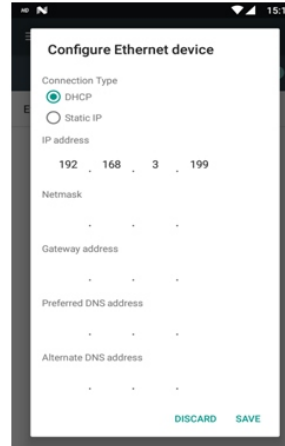


4.1.2 Use LAN cable connecting to the network

Procedure

1. Non-fixed IP address: connected to the network, after the Internet connected, wait 2 minutes, the top left corner of the main screen will show the IP address of the device.
2. Fixed IP address: connected to the network, first enter the Ethernet interface as (FIG. 2), click the icon Ethernet, then Ethernet configuration (FIG. 3), selecting a static IP, entering the correct IP address, subnet mask, DNS server and other information, and then click to save.

After successful connected, the top left corner of the main interface devices will show IP address of the device (consistent with the IP address input setting).

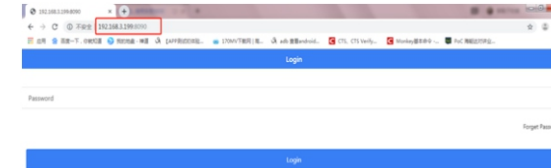


4.2 WEB management Interface operating Instructions

Use PC or smartphone, execute the browser, (recommended to use google Chrome)

5.2.1 WEB interface log

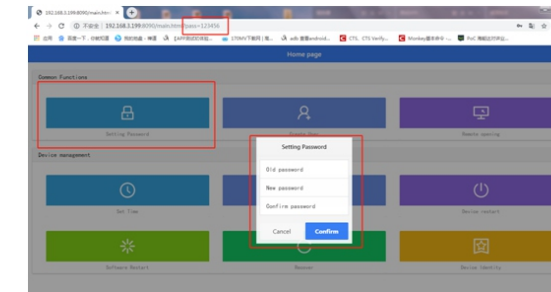
1. Enter terminal's IP address at browser address bar and add port 8090. For example: 192.168.3.243: 8090.



2. Default Password is 123456

5.2.2 Change login password

Recommended to change the password. Password length cannot exceed 12 digits, and not allow special character such as "@#%\$"



Appendix: Installation Environmental Reminders

1. Installation ambient light value

Candle : 10 Lux Lamp : 100~850 Lux Lamp : 100~850 Lux
Note: Minimum illumination device support for 100 Lux.

2. Mount the device in the room, at least 2 meters from the light source. At least 3 meters away from the window and the door.



3. Avoid back lighting, direct sunlight, direct sunlight through the window, through the window slanting sunlight, light close-range raying.

4. Recommended installation height range is 1.2m-1.5m.

Certificate of conformity

The product passed the quality inspection and is allowed to leave the factory

Inspectors: Production Date:

Warranty Card

1. This product has been used in normal operation and has not been dismantled since the date of purchase. It is confirmed by the warranty personnel that it is a product quality problem and enjoys warranty service within one year.

2. Please show the equipment SN and purchase certificate when repairing. The company reserves the right to explain the above.

Customer Name: _____
Customer Phone: _____
Customer Address: _____
Purchase Date: _____
Problem Point Description: _____

Warning

Declaration

This device(FCC ID:SWSH1000) complies with part 15 of the FCC rules.

Operation is subject to the following two conditions:(1) the device may not cause harmful interference, and (2) this device must accept any interference received,including interference that may mause undesied operation.

This equipment has been tested and found to comply with the limits for a Class B digital device, pursuant to Part 15 of the FCC Rules. These limits are designed to provide reasonable protection against harmful interference in a residential installation. This equipment generates, uses and can radiate radio frequencyand, if not installed and used in accordance with the instructions, may cause harmful interference to radio communications. However,there is no guarantee hat interference will not occur in a particular installation.If this equipment does cause harmful interference to radio or television reception,which can be determined by turning the equipment off and on, the user is encouraged to try to correct the interference by one or more of the following measures:

--Reorient or relocate the receiving antenna.

--Increase the separation between the equipment and receiver.

-- Connect the equipment into an outlet on a circuit different from that to which the receiver is connected.

-- Consult the dealer or an experienced radio/TV technician for help.

This device complies with Part 15 of the FCC Rules. Operation is subject to the following two conditions:

(1) This device may not cause harmful interference.

(2) This device must accept any interference received, including interference that may cause undesired operation.

Warning:

Changes or modifications made to this equipment not expressly approved by UROVO may void the FCC authorization to operate this equipment.

The Specific Absorption Rate (SAR) is the unit of measurement for the amount of radio frequency energy absorbed by the body when using a device. The SAR value is determined at the highest certified power level in laboratory conditions, but the actual SAR level of the device when being operated can be well below the value. This is because the device is designed to use the minimum power required to reach the network. The SAR limit adopted by USA and Canada for the parts of of the human body treated as extremities, such as hands, wrists, feet, ankles, and pinnae, where the peak spatial-average SAR limit is 1.6 W/kg,averaged over any 1 grams of tissue. When properly worn on the body-> when tested at 5mm distanceis 1.28 W/kg.

Accessory Information

objectmanufacturer/ trademarktype/model/technical data

Battery

Adapter "Strong Power Electronics Technology CO.,Ltd, KP24A-120200HU

Input:

100-240V~,
50/60Hz, 0.7A

Output:

12Vdc, 2A"

USB Cable 1.2m/DC

CAUTION : RISK OF EXPLOSION IF BATTERY IS REPLACED BY AN INCORRECT TYPE.
DISPOSE OF USED BATTERIES ACCORDING TO THE INSTRUCTIONS.