

1、 Main Antenna

- Technical parameters

WWAN: 2G/3G/4G

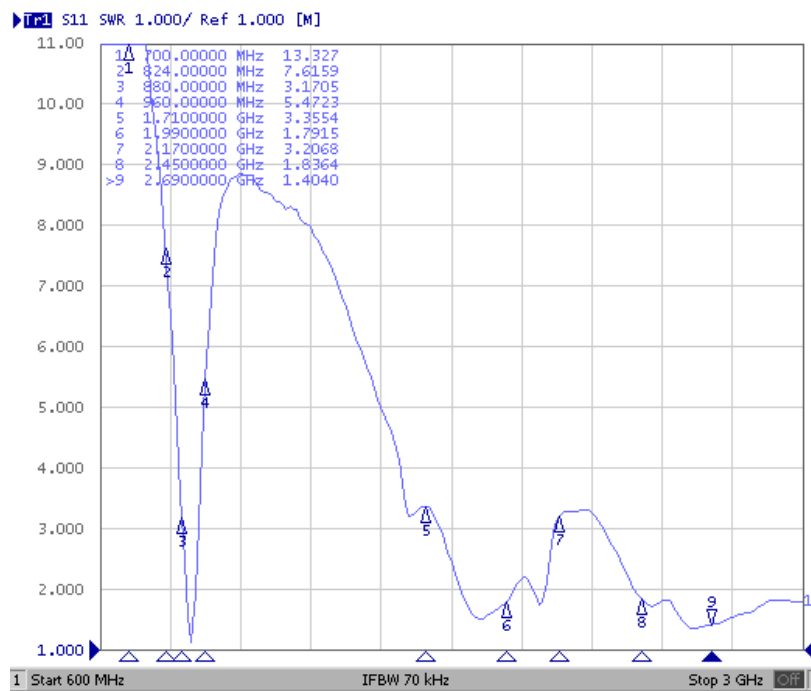
Antenna company: Sunnyway Technology

Antenna form: PIFA

Frequency: 700MHz~2690MHz

SWR: $\leq 13.5: 1$

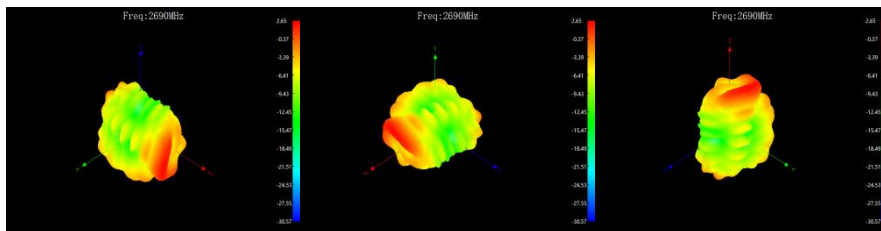
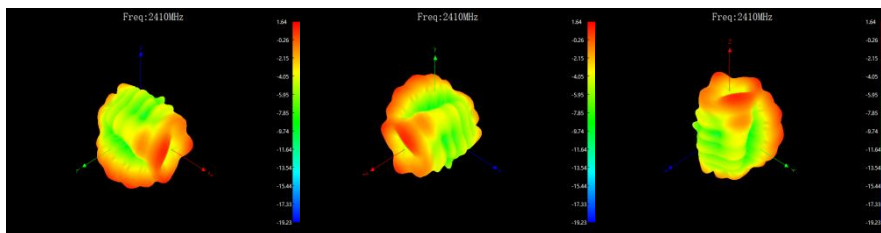
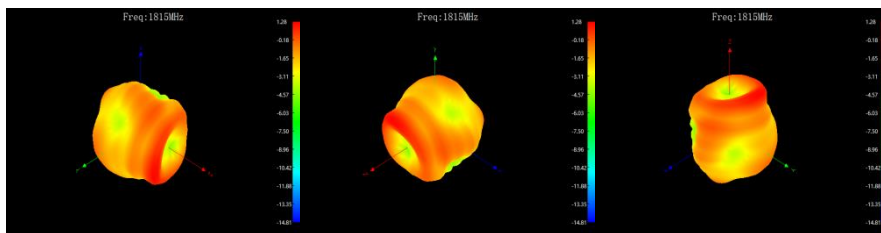
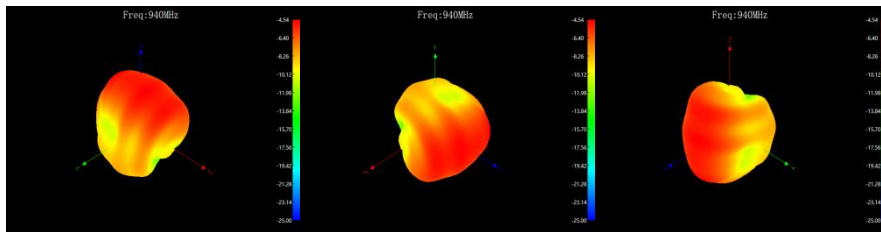
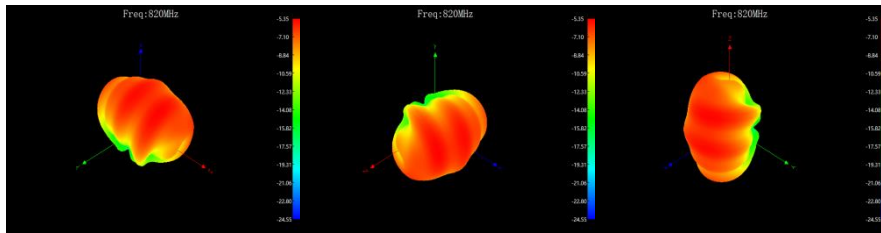
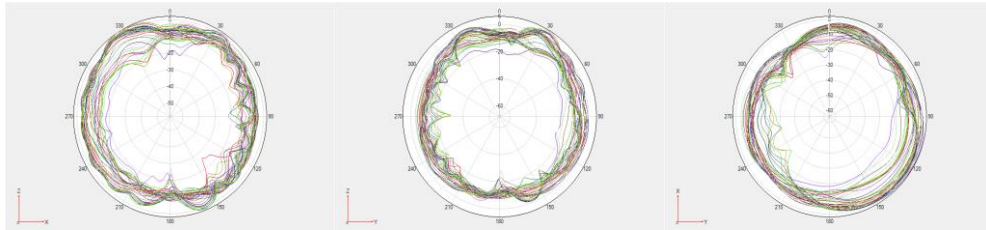
- S11



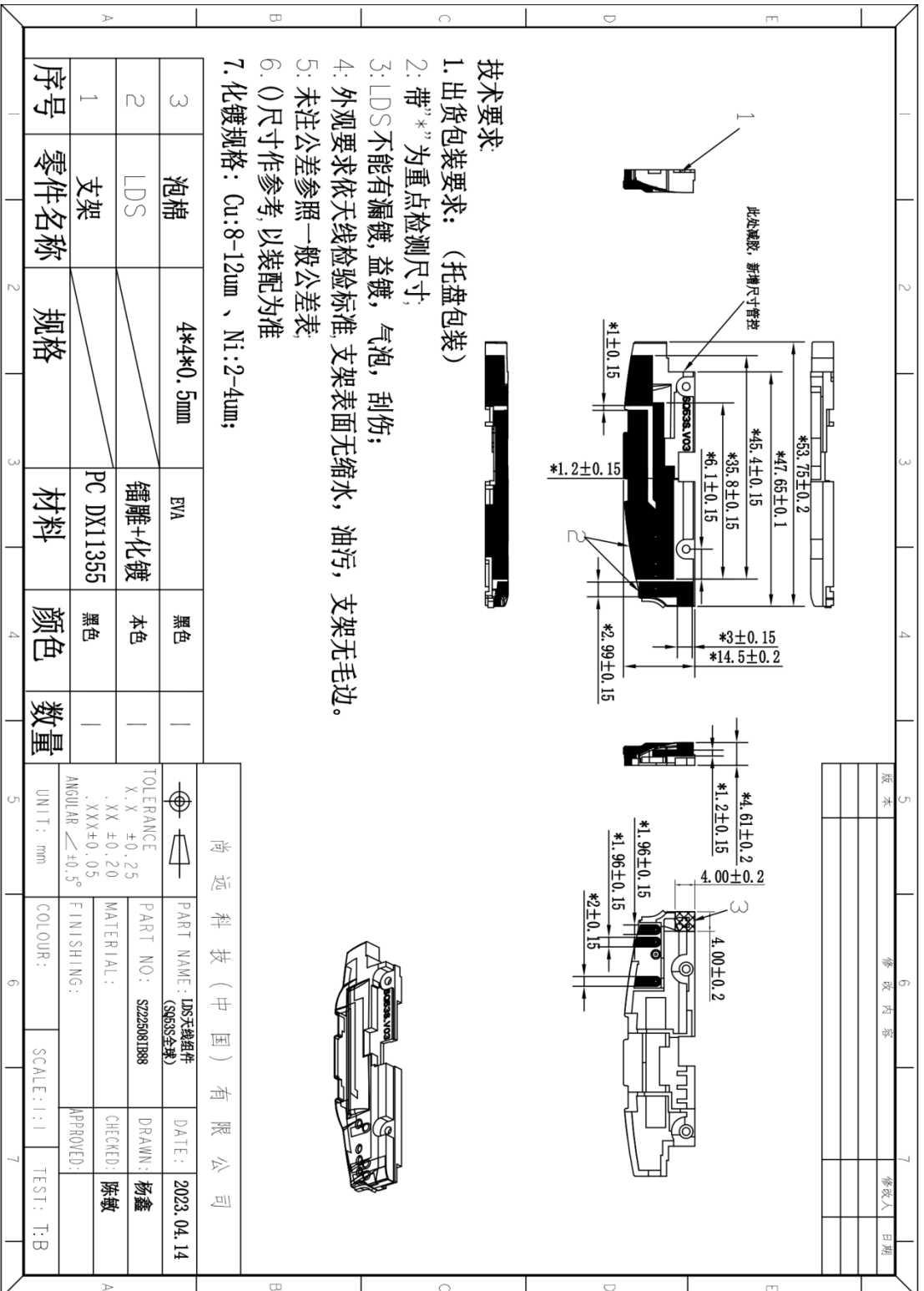
● Efficiency and gain

Frequency/Mhz	MaxGain/dBi	Efficiency / %	Frequency/Mhz	MaxGain/dBi	Efficiency / %
700	-8.32	15.45	1710	-3.21	30.89
715	-8.61	15.48	1745	-1.9	36.93
730	-8.88	16.6	1780	-1.45	36.61
745	-7.13	16.83	1815	1.28	41.92
760	-6.19	17.21	1850	3.22	40.93
775	-5.85	17.57	1885	4.28	45.19
790	-5.97	18.14	1920	5.51	51.29
805	-5.35	18.64	1955	5.33	51.64
820	-5.35	22.33	1990	3.77	48.08
835	-3.37	23.59	2025	3.29	43.35
850	-1.86	24.42	2060	3.87	41.98
865	-0.26	26.28	2095	4.13	38.37
880	-0.43	28.28	2130	1.06	37.08
895	-1.91	28.41	2165	-1.02	32.99
910	-2.83	26.56	2200	-0.12	35.51
925	-3.78	24.91	2235	0.32	37.8
940	-4.54	22.28	2270	0.72	40.41
955	-4.92	20.57	2305	1.45	33.91
			2340	1.17	36.05
			2375	1.78	38.5
			2410	1.64	36.62
			2445	0.76	32.86
			2480	1.55	33.25
			2515	2.51	34.11
			2550	2.94	34.79
			2585	2.83	34.72
			2620	2.79	34.38
			2655	2.61	33.38
			2690	2.65	32.23

● Radiation pattern



● Structure size:



2、DIV Antenna

- Technical parameters

WWAN: 2G/3G/4G

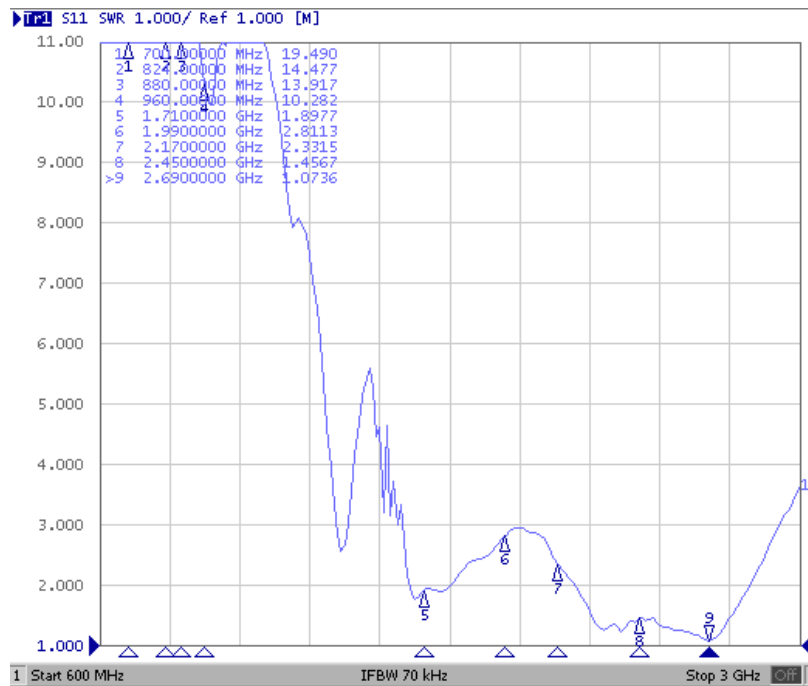
Antenna company: Sunnyway Technology

Antenna form: monopole

Frequency: 1710MHz~2690MHz

SWR: $\leq 3.0: 1$

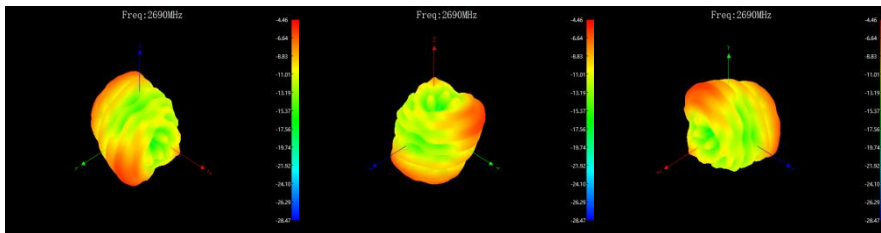
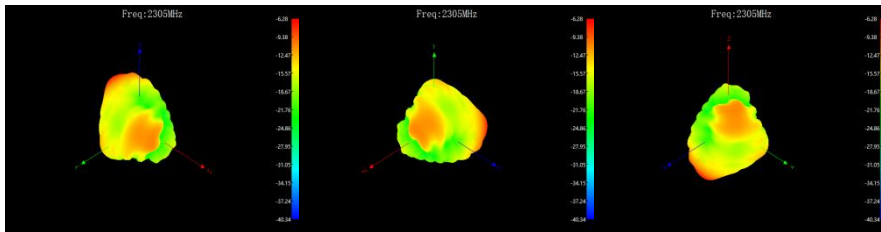
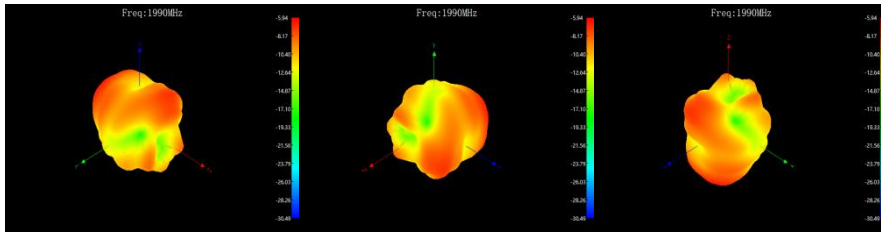
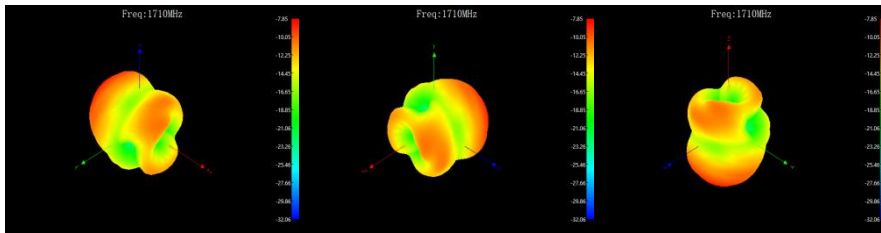
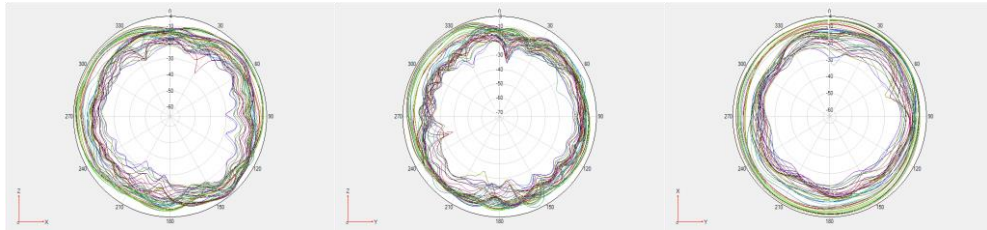
- S11



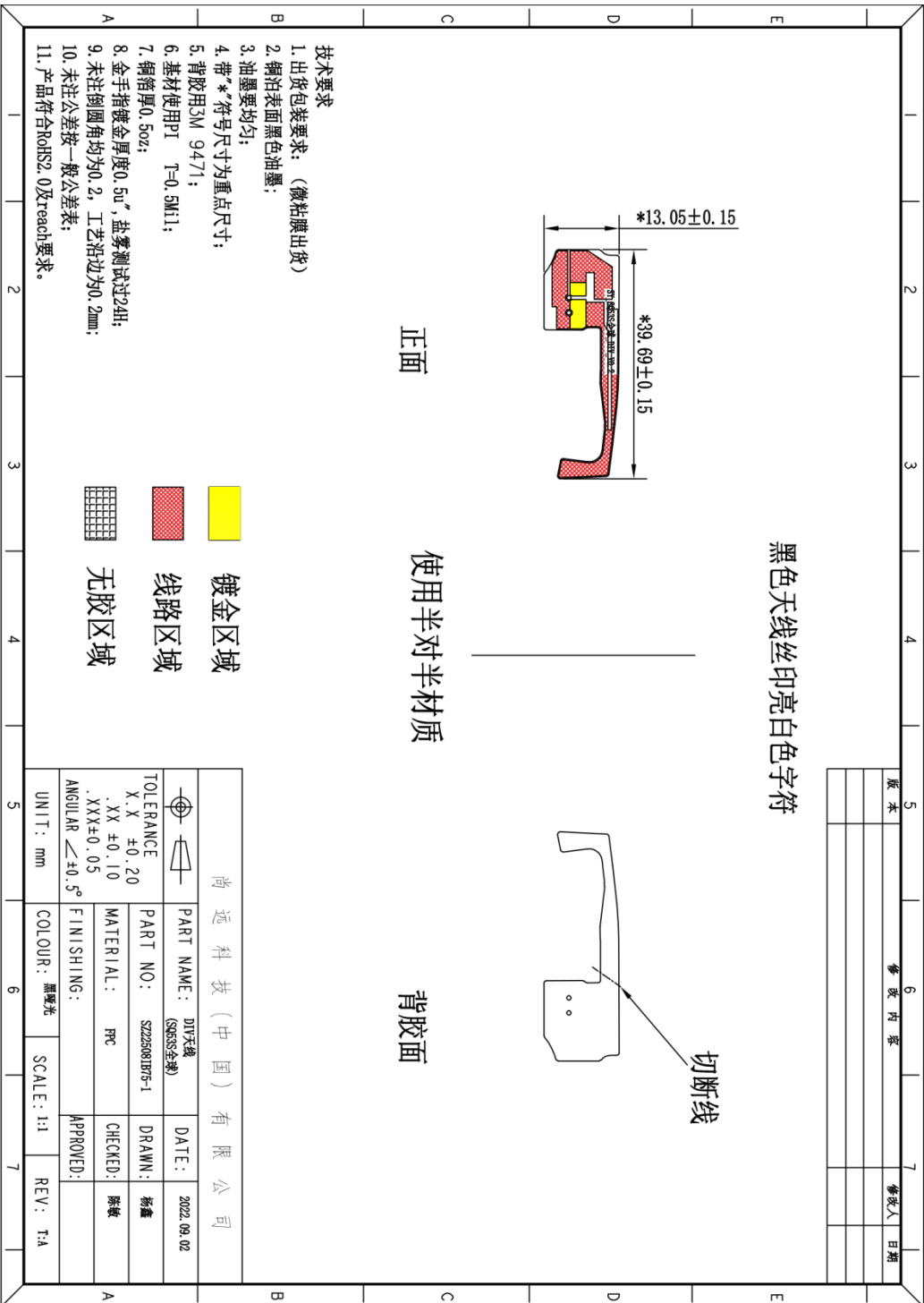
● Efficiency and gain

Frequency/Mhz	MaxGain/dBi	Efficiency / %
1710	-7.85	18.95
1745	-5.85	21.21
1780	-5.76	22.89
1815	-6.5	21.43
1850	-6.96	20.86
1885	-7.81	20
1920	-7.03	19.95
1955	-6.3	20.33
1990	-5.94	20.69
2025	-5.59	20.32
2060	-5.31	20.43
2095	-5.4	20.15
2130	-5.49	19.57
2165	-6.07	19.52
2200	-5.16	19.73
2235	-4.55	19.99
2270	-4.66	19.47
2305	-6.28	17.9
2340	-9.94	16.49
2375	-12.16	15.98
2410	-13.02	15.76
2445	-13.84	15.72
2480	-13.71	15.94
2515	-11.32	16.54
2550	-9.16	17.59
2585	-7.61	19.01
2620	-6.67	20.28
2655	-6.04	21.55
2690	-4.46	23.55

● Radiation pattern



● Structure size



3、GPS&WIFI&BT Antenna

- Technical parameters

WLAN: GPS&WIFI&BT

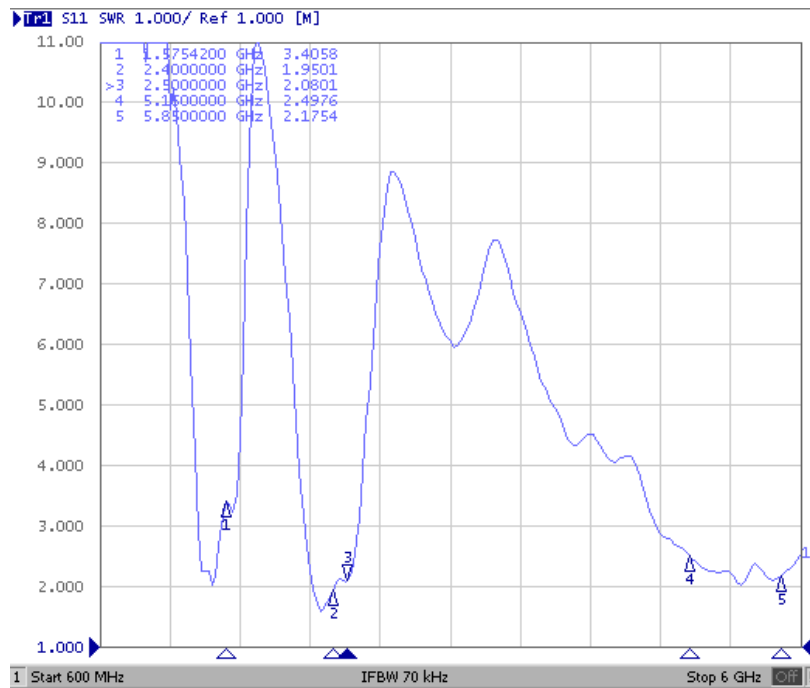
Antenna company: Sunnyway Technology

Antenna form: PIFA

Frequency: 1575MHz, 2400MHz~2500MHz, 5150MHz~5850MHz

SWR: $\leq 4.0: 1$

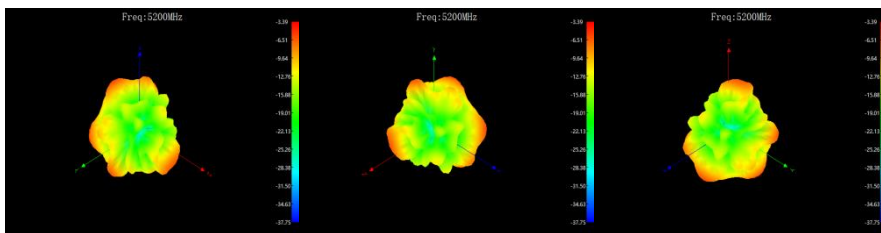
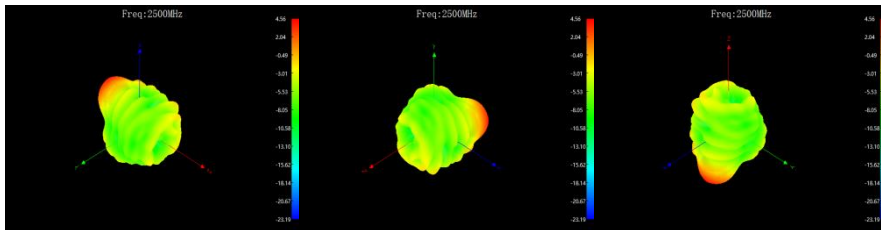
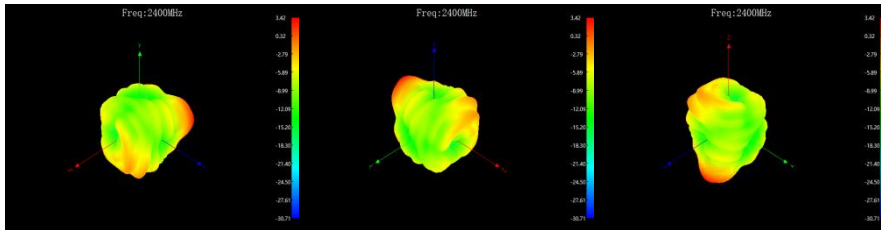
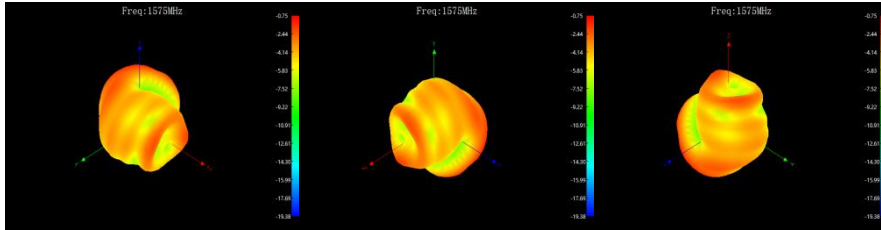
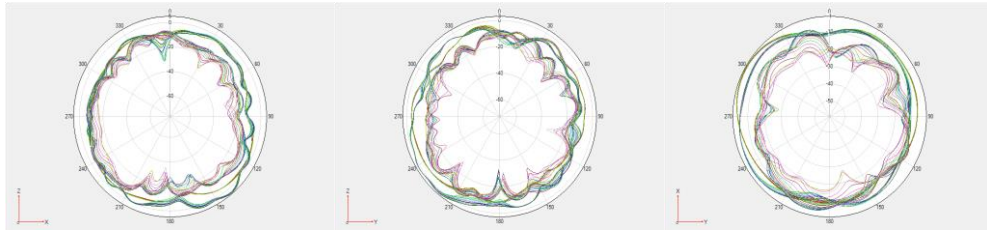
- S11



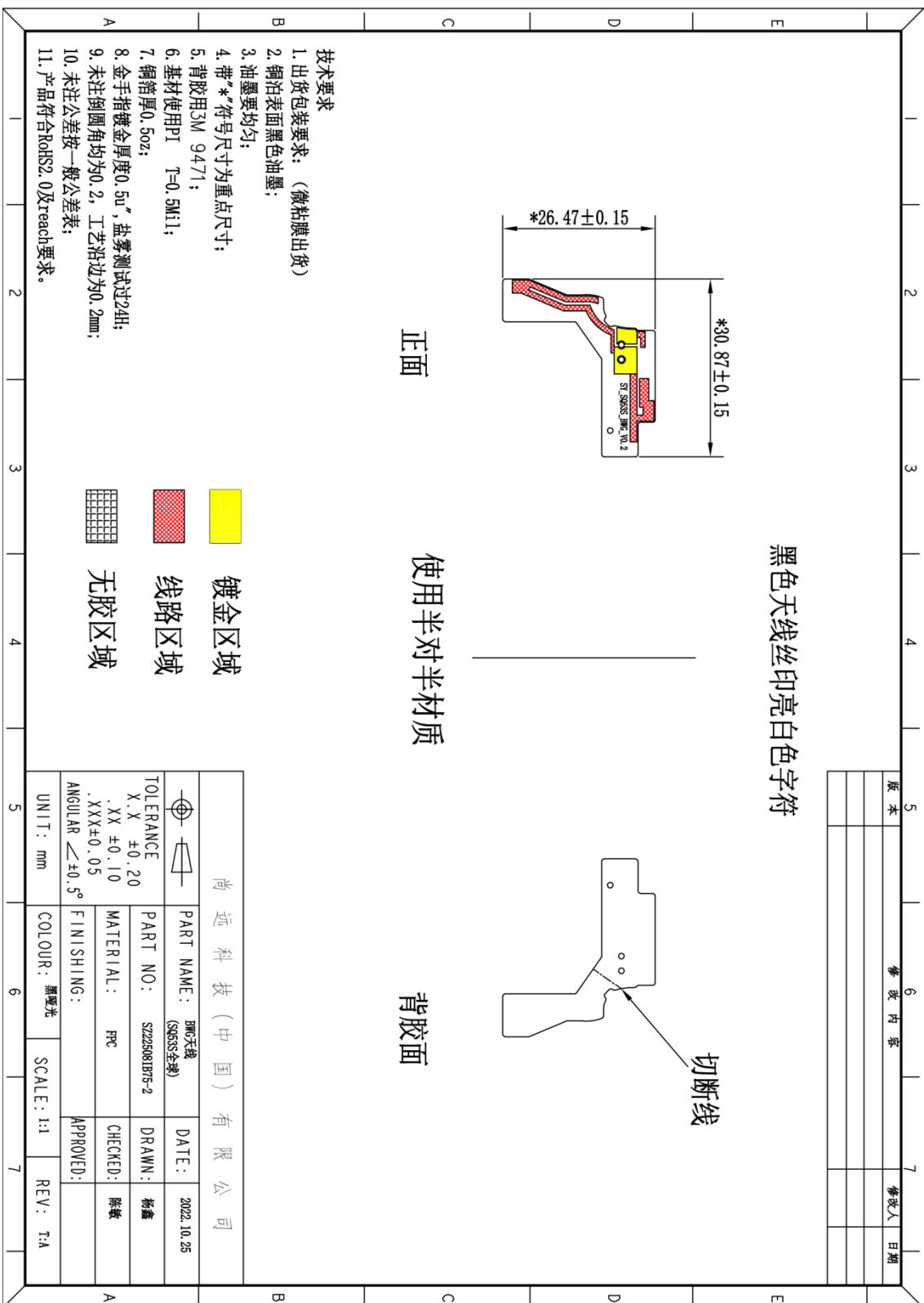
● Efficiency and gain

Frequency/Mhz	MaxGain/dBi	Efficiency / %	Frequency/Mhz	MaxGain/dBi	Efficiency / %
1560	-0.96	29.12	5200	-2.39	32.63
1565	-0.83	29.71	5235	-2.37	32.87
1570	-0.99	28.7	5270	-3.24	32.05
1575	-0.75	29.71	5305	-3.06	32.43
1580	-0.55	30.72	5340	-3.07	32.59
2400	2.42	35.73	5375	-3.35	32.34
2410	2.68	36.22	5410	-3.24	32.3
2420	2.44	35.81	5445	-2.98	32.65
2430	2.57	35.97	5480	-3.15	32.28
2440	2.63	37.33	5515	-2.92	31.98
2450	2.94	38.28	5550	-2.66	32.07
2460	3	38.02	5585	-2.98	31.06
2470	3.33	39.17	5620	-4.12	29.43
2480	3.52	39.72	5655	-3.3	28.09
2490	3.6	39.72	5690	-3.97	27.41
2500	3.56	39.63	5725	-3.26	27.07
			5760	-3.2	27.39
			5795	-3.88	28

● Radiation pattern



● Structure size



黑色天线丝印亮白色字符

切断线

正面

使用半对半材质

背胶面

版本	修改内容	修改人	日期