

# DOGTRA GF10UC



## Dogtra Company

12322 Monarch Street, Garden Grove, CA 92841

Tel. 310.534.0101 Fax. 310.534.9111

Toll Free. 1.888.811.9111

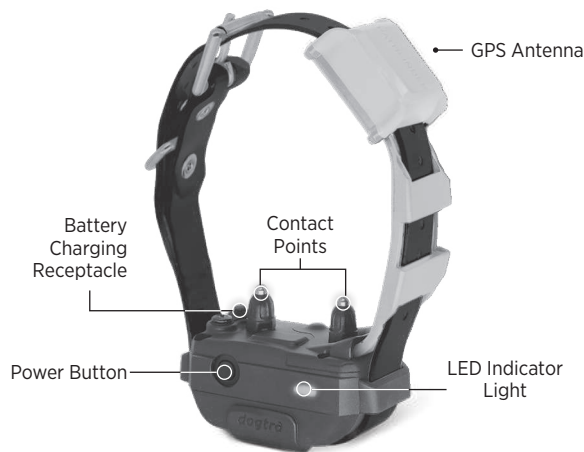
[www.dogtra.com](http://www.dogtra.com)

Copyright © 2025 All rights reserved.



Like what you see?  
Share your experience  
by leaving us a  
Review!

## OVERVIEW



## UNDERSTANDING YOUR TRAINING SYSTEM

### 1. Turning the Collar ON/OFF



Press and hold the power button for 2 seconds.

- **Power ON:** Solid green LED + tone
- **Power OFF:** Red LED + tone

LED Blinking Indicators	Battery Level Indicators
<ul style="list-style-type: none"><li>• Blinks every 2 sec: Strong GPS signal</li><li>• Solid red: No GPS signal (Blinking LED color reflects battery level)</li></ul>	<ul style="list-style-type: none"><li>• Green: 51-100%</li><li>• Orange: 21-50%</li><li>• Red: 0-20%</li></ul>

## GETTING STARTED

### 1. Download the GF10UC App

- Available on the App Store and Google Play.

**Bluetooth® 5.0 required**



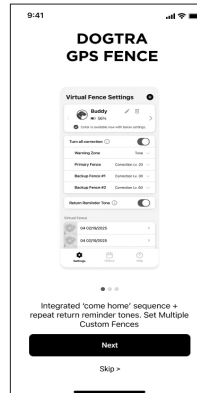
**App Store**



**Google Play**

### 2. Pairing Tips

- On first launch, follow the pairing steps to connect the GF10UC Collar to your smartphone.



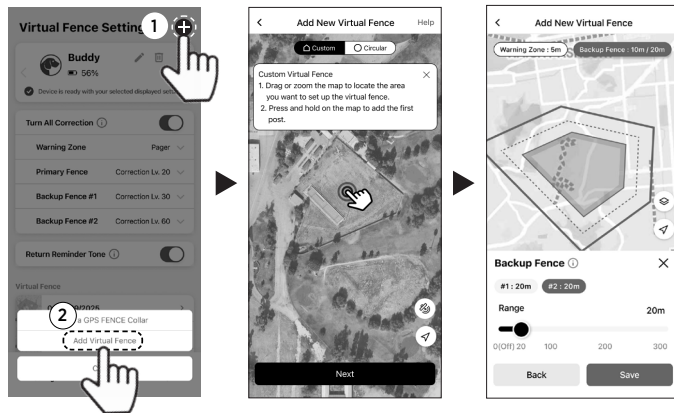
\* If smartphone cannot connect with collar, check the following

- Stay within 30 feet of the collar.
- Ensure the collar is powered on.
- Confirm the collar isn't connected to another device.

# USING THE SYSTEM

## 1. Create a Virtual Fence

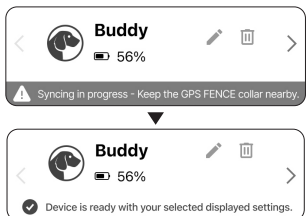
- Open the GF10UC App
- Go to **Settings** → **Add** → **Add Virtual Fence**



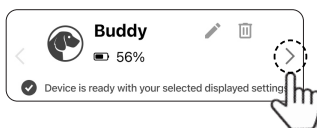
## 2. Update Fence Info to Each Collar

- On the **Settings** page, paired collar will automatically update the Virtual Fence information.
- Update each paired collar individually by swiping through collar windows.
- Keep the collar and smartphone close during updates.  
( 2-3 seconds per collar )

### Automatic update (2-3 sec)

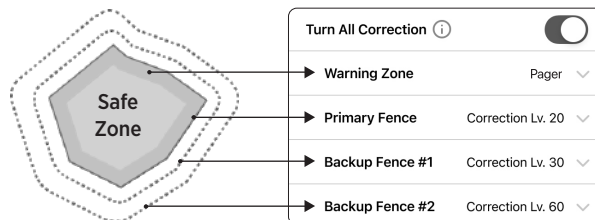


### To update other collar(s)



## 3. Set Corrections Type for Each Virtual Fence layer

- If necessary, you can turn off all correction. Otherwise, leave it on.



- Options include:
  - **Correction** : Up to 5 seconds of continuous stimulation
  - **Pager vibration** : Up to 5 seconds vibration
  - **Tone** : 5-second beep (audible nearby only)
  - **None** : No correction

## 4. Begin Flag Training

- Use flags as visual markers to help your dog understand the boundary.
- This helps the dog associate corrections with the perimeter and learn avoidance.
- See: **Help** → **E-Fence Flag Training Guide** in the app  
\* Flags sold separately



Click on the QR to start training

For more details & troubleshooting, check out the full online manual here!



# IMPORTANT SAFETY AND PRODUCT INFORMATION

## WARNING

**Please read all safety and product information below before using your Dogtra product. Failure to follow these safety instructions could result in injury to you, your dog and others, or it could result in damage to your Dogtra product or other property.**

## PRODUCT SAFETY

### Training Methods

Dogtra products may be used with a variety of training methods. However, each dog may have a different reaction to training methods and to Dogtra products. Closely observe your dog when determining the right training method to use with your Dogtra product.

### Aggressive Dogs

Do not use Dogtra products with aggressive dogs as such dogs may react adversely and cause injury to people or other dogs. Seek the assistance of a dog-training specialist or veterinarian when dealing with aggressive dogs.

### Children

Dogtra products are not toys. Adult supervision and close attention are necessary when Dogtra products are used by or near children.

## PRODUCT DAMAGE

### Electrical Product

Your Dogtra product contains electrical components and batteries. Do not use or keep your product near heat or flammable sources. Such use or storage may damage your product and/or cause fire, explosion, injury, or property damage.

### Medical Device Interference

Dogtra products contain electrical and magnetic components that emit low level electromagnetic waves and radio frequencies. These electromagnetic waves or radio frequencies may interfere with pacemakers, defibrillators, or other medical devices. Consult your physician or medical device maker before using your medical device around a Dogtra product. If you think that your Dogtra product is interfering with your pacemaker, defibrillator, or other medical device, stop using the Dogtra product.

### Inadvertent Activation

The digital microprocessor offers thousands of unique codes to eliminate

frequency match-up with other Dogtra e-collars. The Constant button will automatically shut down after being held down for 12 seconds or more as a safety feature.

## UNAUTHORIZED USE

Your Dogtra product should be used only in a humane manner to train and educate your dog. Dogtra products are not intended for use in any other manner nor are they intended for use with other animals or with humans.

## BATTERY

Your Dogtra product contains batteries. Take care when removing and installing batteries as your fingers may get caught. Dispose of batteries as provided by your local regulations. Do not disassemble, crush, heat, or otherwise alter the battery as it may cause fire, injury or property damage.

## FCC WARNING STATEMENT

This device complies with Part 15 of the FCC Rules.

Operation is subject to the following two conditions:

- (1) this device may not cause harmful interference, and
- (2) this device must accept any interference received, including interference that may cause undesired operation.

NOTE: This equipment has been tested and found to comply with the limits for a Class B digital device, pursuant to Part 15 of the FCC Rules.

These limits are designed to provide reasonable protection against harmful interference in a residential installation.

This equipment generates, uses and can radiate radio frequency energy and, if not installed and used in accordance with the instructions, may cause harmful interference to radio communications.

However, there is no guarantee that interference will not occur in a particular installation.

If this equipment does cause harmful interference to radio or television reception, which can be determined by turning the equipment off and on, the user is encouraged to try to correct the interference by one or more of the following measures:

- Reorient or relocate the receiving antenna.
- Increase the separation between the equipment and receiver.
- Connect the equipment into an outlet on a circuit different from that to which the receiver is connected.
- Consult the dealer or an experienced radio/TV technician for help.

Changes or modifications not expressly approved by the party responsible for compliance could void the user's authority to operate the equipment.





# DOGTRA GPS FENCE

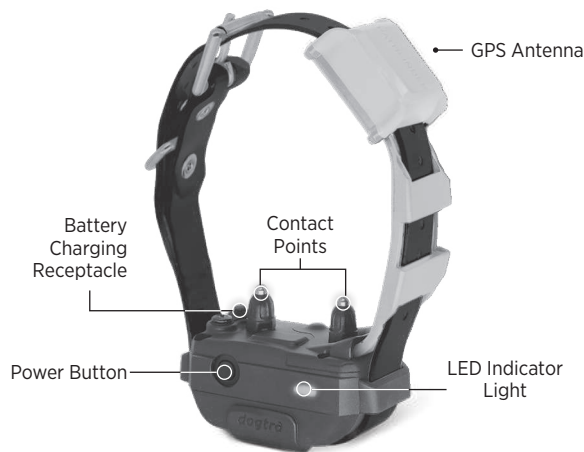
## Dogtra Company

12322 Monarch Street, Garden Grove, CA 92841  
Tel. 310.534.0101 Fax. 310.534.9111  
Toll Free. 1.888.811.9111  
[www.dogtra.com](http://www.dogtra.com)  
Copyright © 2025 All rights reserved.



Like what you see?  
Share your experience  
by leaving us a  
Review!

## OVERVIEW



## UNDERSTANDING YOUR TRAINING SYSTEM

### 1. Turning the Collar ON/OFF



Press and hold the power button for 2 seconds.

- **Power ON:** Solid green LED + tone
- **Power OFF:** Red LED + tone

LED Blinking Indicators	Battery Level Indicators
<ul style="list-style-type: none"><li>• Blinks every 2 sec: Strong GPS signal</li><li>• Solid red: No GPS signal (Blinking LED color reflects battery level)</li></ul>	<ul style="list-style-type: none"><li>• Green: 51-100%</li><li>• Orange: 21-50%</li><li>• Red: 0-20%</li></ul>

## GETTING STARTED

### 1. Download the GPS Fence App

- Available on the App Store and Google Play.

Bluetooth 5.0 required



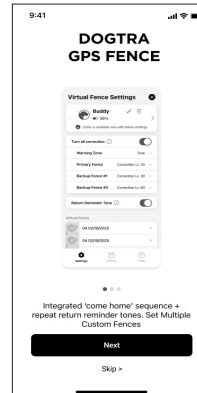
App Store



Google Play

### 2. Pairing Tips

- On first launch, follow the pairing steps to connect the GPS Fence Collar to your smartphone.



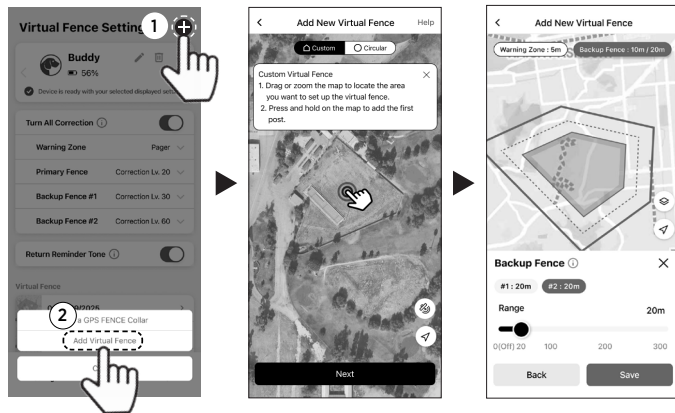
\* If smartphone cannot connect with collar, check the following

- Stay within 30 feet of the collar.
- Ensure the collar is powered on.
- Confirm the collar isn't connected to another device.

# USING THE SYSTEM

## 1. Create a Virtual Fence

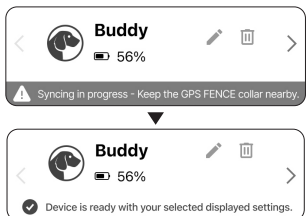
- Open the GPS Fence App
- Go to **Settings** → **Add** → **Add Virtual Fence**



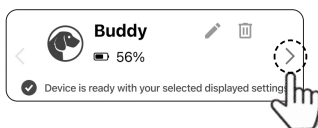
## 2. Update Fence Info to Each Collar

- On the **Settings** page, paired collar will automatically update the Virtual Fence information.
  - Update each paired collar individually by swiping through collar windows.
  - Keep the collar and smartphone close during updates.
- ( 2-3 seconds per collar )

### Automatic update (2-3 sec)

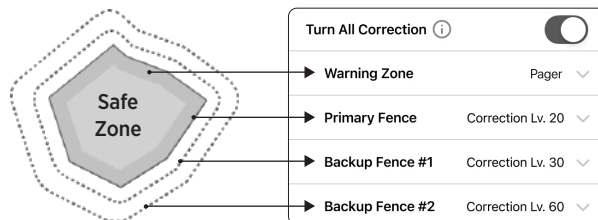


### To update other collar(s)



## 3. Set Corrections Type for Each Virtual Fence layer

- If necessary, you can turn off all correction. Otherwise, leave it on.



- Options include:
  - **Correction** : Up to 5 seconds of continuous stimulation
  - **Pager vibration** : Up to 5 seconds vibration
  - **Tone** : 5-second beep (audible nearby only)
  - **None** : No correction

## 4. Begin Flag Training

- Use flags as visual markers to help your dog understand the boundary.
  - This helps the dog associate corrections with the perimeter and learn avoidance.
  - See: **Help** → **E-Fence Flag Training Guide** in the app
- \* Flags sold separately



Click on the QR to start training

For more details & troubleshooting, check out the full online manual here!



# IMPORTANT SAFETY AND PRODUCT INFORMATION

## WARNING

**Please read all safety and product information below before using your Dogtra product. Failure to follow these safety instructions could result in injury to you, your dog and others, or it could result in damage to your Dogtra product or other property.**

## PRODUCT SAFETY

### Training Methods

Dogtra products may be used with a variety of training methods. However, each dog may have a different reaction to training methods and to Dogtra products. Closely observe your dog when determining the right training method to use with your Dogtra product.

### Aggressive Dogs

Do not use Dogtra products with aggressive dogs as such dogs may react adversely and cause injury to people or other dogs. Seek the assistance of a dog-training specialist or veterinarian when dealing with aggressive dogs.

### Children

Dogtra products are not toys. Adult supervision and close attention are necessary when Dogtra products are used by or near children.

## PRODUCT DAMAGE

### Electrical Product

Your Dogtra product contains electrical components and batteries. Do not use or keep your product near heat or flammable sources. Such use or storage may damage your product and/or cause fire, explosion, injury, or property damage.

### Medical Device Interference

Dogtra products contain electrical and magnetic components that emit low level electromagnetic waves and radio frequencies. These electromagnetic waves or radio frequencies may interfere with pacemakers, defibrillators, or other medical devices. Consult your physician or medical device maker before using your medical device around a Dogtra product. If you think that your Dogtra product is interfering with your pacemaker, defibrillator, or other medical device, stop using the Dogtra product.

### Inadvertent Activation

The digital microprocessor offers thousands of unique codes to eliminate

frequency match-up with other Dogtra e-collars. The Constant button will automatically shut down after being held down for 12 seconds or more as a safety feature.

## UNAUTHORIZED USE

Your Dogtra product should be used only in a humane manner to train and educate your dog. Dogtra products are not intended for use in any other manner nor are they intended for use with other animals or with humans.

## BATTERY

Your Dogtra product contains batteries. Take care when removing and installing batteries as your fingers may get caught. Dispose of batteries as provided by your local regulations. Do not disassemble, crush, heat, or otherwise alter the battery as it may cause fire, injury or property damage.

## FCC WARNING STATEMENT

This device complies with Part 15 of the FCC Rules.

Operation is subject to the following two conditions:

- (1) this device may not cause harmful interference, and
- (2) this device must accept any interference received, including interference that may cause undesired operation.

NOTE: This equipment has been tested and found to comply with the limits for a Class B digital device, pursuant to Part 15 of the FCC Rules.

These limits are designed to provide reasonable protection against harmful interference in a residential installation.

This equipment generates, uses and can radiate radio frequency energy and, if not installed and used in accordance with the instructions, may cause harmful interference to radio communications.

However, there is no guarantee that interference will not occur in a particular installation.

If this equipment does cause harmful interference to radio or television reception, which can be determined by turning the equipment off and on, the user is encouraged to try to correct the interference by one or more of the following measures:

- Reorient or relocate the receiving antenna.
- Increase the separation between the equipment and receiver.
- Connect the equipment into an outlet on a circuit different from that to which the receiver is connected.
- Consult the dealer or an experienced radio/TV technician for help.

Changes or modifications not expressly approved by the party responsible for compliance could void the user's authority to operate the equipment.





# DOGTRA GPS FENCE SE

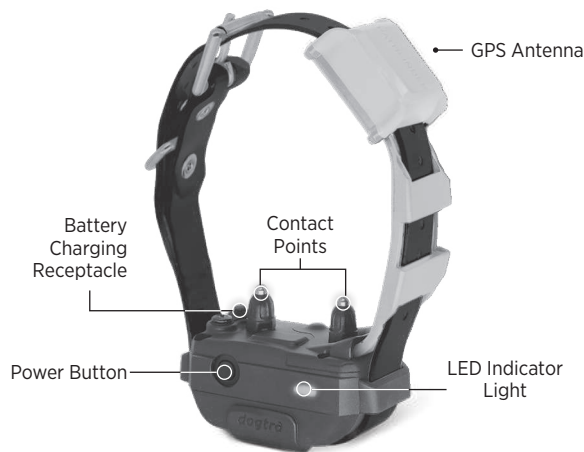
## Dogtra Company

12322 Monarch Street, Garden Grove, CA 92841  
Tel. 310.534.0101 Fax. 310.534.9111  
Toll Free. 1.888.811.9111  
[www.dogtra.com](http://www.dogtra.com)  
Copyright © 2025 All rights reserved.



Like what you see?  
Share your experience  
by leaving us a  
Review!

## OVERVIEW



## UNDERSTANDING YOUR TRAINING SYSTEM

### 1. Turning the Collar ON/OFF



Press and hold the power button for 2 seconds.

- **Power ON:** Solid green LED + tone
- **Power OFF:** Red LED + tone

LED Blinking Indicators	Battery Level Indicators
<ul style="list-style-type: none"> <li>• Blinks every 2 sec: Strong GPS signal</li> <li>• Solid red: No GPS signal (Blinking LED color reflects battery level)</li> </ul>	<ul style="list-style-type: none"> <li>• Green: 51-100%</li> <li>• Orange: 21-50%</li> <li>• Red: 0-20%</li> </ul>

## GETTING STARTED

### 1. Download the GPS FENCE SE App

- Available on the App Store and Google Play.

Bluetooth 5.0 required



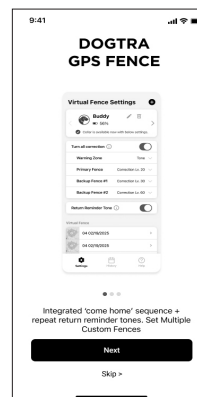
App Store



Google Play

### 2. Pairing Tips

- On first launch, follow the pairing steps to connect the GPS FENCE SE Collar to your smartphone.



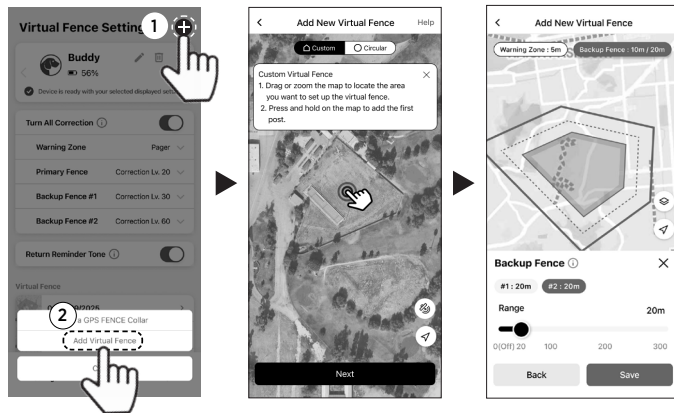
\* If smartphone cannot connect with collar, check the following

- Stay within 30 feet of the collar.
- Ensure the collar is powered on.
- Confirm the collar isn't connected to another device.

# USING THE SYSTEM

## 1. Create a Virtual Fence

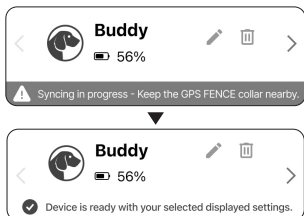
- Open the GPS FENCE SE App
- Go to **Settings** → **Add** → **Add Virtual Fence**



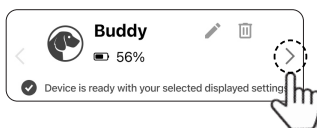
## 2. Update Fence Info to Each Collar

- On the **Settings** page, paired collar will automatically update the Virtual Fence information.
- Update each paired collar individually by swiping through collar windows.
- Keep the collar and smartphone close during updates.  
( 2-3 seconds per collar )

### Automatic update (2-3 sec)

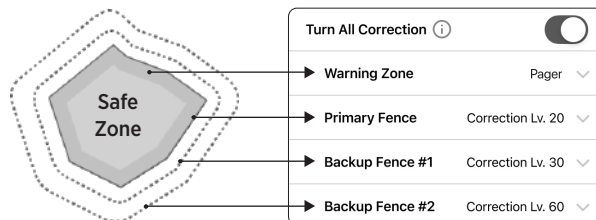


### To update other collar(s)



## 3. Set Corrections Type for Each Virtual Fence layer

- If necessary, you can turn off all correction. Otherwise, leave it on.



- Options include:
  - **Correction** : Up to 5 seconds of continuous stimulation
  - **Pager vibration** : Up to 5 seconds vibration
  - **Tone** : 5-second beep (audible nearby only)
  - **None** : No correction

## 4. Begin Flag Training

- Use flags as visual markers to help your dog understand the boundary.
- This helps the dog associate corrections with the perimeter and learn avoidance.
- See: **Help** → **E-Fence Flag Training Guide** in the app
  - \* Flags sold separately



Click on the QR to start training

For more details & troubleshooting, check out the full online manual here!



# IMPORTANT SAFETY AND PRODUCT INFORMATION

## WARNING

**Please read all safety and product information below before using your Dogtra product. Failure to follow these safety instructions could result in injury to you, your dog and others, or it could result in damage to your Dogtra product or other property.**

## PRODUCT SAFETY

### Training Methods

Dogtra products may be used with a variety of training methods. However, each dog may have a different reaction to training methods and to Dogtra products. Closely observe your dog when determining the right training method to use with your Dogtra product.

### Aggressive Dogs

Do not use Dogtra products with aggressive dogs as such dogs may react adversely and cause injury to people or other dogs. Seek the assistance of a dog-training specialist or veterinarian when dealing with aggressive dogs.

### Children

Dogtra products are not toys. Adult supervision and close attention are necessary when Dogtra products are used by or near children.

## PRODUCT DAMAGE

### Electrical Product

Your Dogtra product contains electrical components and batteries. Do not use or keep your product near heat or flammable sources. Such use or storage may damage your product and/or cause fire, explosion, injury, or property damage.

### Medical Device Interference

Dogtra products contain electrical and magnetic components that emit low level electromagnetic waves and radio frequencies. These electromagnetic waves or radio frequencies may interfere with pacemakers, defibrillators, or other medical devices. Consult your physician or medical device maker before using your medical device around a Dogtra product. If you think that your Dogtra product is interfering with your pacemaker, defibrillator, or other medical device, stop using the Dogtra product.

### Inadvertent Activation

The digital microprocessor offers thousands of unique codes to eliminate

frequency match-up with other Dogtra e-collars. The Constant button will automatically shut down after being held down for 12 seconds or more as a safety feature.

## UNAUTHORIZED USE

Your Dogtra product should be used only in a humane manner to train and educate your dog. Dogtra products are not intended for use in any other manner nor are they intended for use with other animals or with humans.

## BATTERY

Your Dogtra product contains batteries. Take care when removing and installing batteries as your fingers may get caught. Dispose of batteries as provided by your local regulations. Do not disassemble, crush, heat, or otherwise alter the battery as it may cause fire, injury or property damage.

## FCC WARNING STATEMENT

This device complies with Part 15 of the FCC Rules.

Operation is subject to the following two conditions:

- (1) this device may not cause harmful interference, and
- (2) this device must accept any interference received, including interference that may cause undesired operation.

NOTE: This equipment has been tested and found to comply with the limits for a Class B digital device, pursuant to Part 15 of the FCC Rules.

These limits are designed to provide reasonable protection against harmful interference in a residential installation.

This equipment generates, uses and can radiate radio frequency energy and, if not installed and used in accordance with the instructions, may cause harmful interference to radio communications.

However, there is no guarantee that interference will not occur in a particular installation.

If this equipment does cause harmful interference to radio or television reception, which can be determined by turning the equipment off and on, the user is encouraged to try to correct the interference by one or more of the following measures:

- Reorient or relocate the receiving antenna.
- Increase the separation between the equipment and receiver.
- Connect the equipment into an outlet on a circuit different from that to which the receiver is connected.
- Consult the dealer or an experienced radio/TV technician for help.

Changes or modifications not expressly approved by the party responsible for compliance could void the user's authority to operate the equipment.





# DOGTRA GPS FENCE

## SPECIAL EDITION

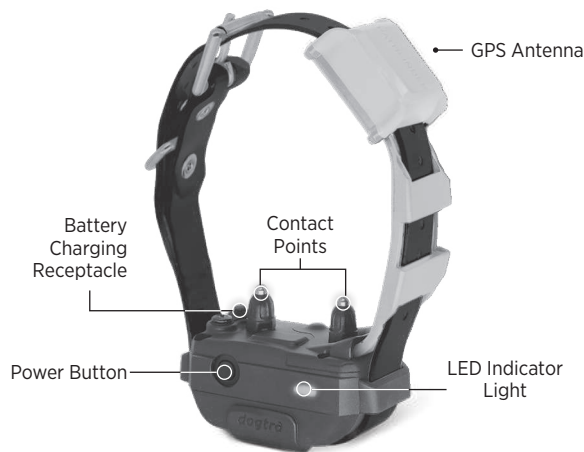
### Dogtra Company

12322 Monarch Street, Garden Grove, CA 92841  
Tel. 310.534.0101 Fax. 310.534.9111  
Toll Free. 1.888.811.9111  
[www.dogtra.com](http://www.dogtra.com)  
Copyright © 2025 All rights reserved.



Like what you see?  
Share your experience  
by leaving us a  
Review!

## OVERVIEW



## UNDERSTANDING YOUR TRAINING SYSTEM

### 1. Turning the Collar ON/OFF



Press and hold the power button for 2 seconds.

- **Power ON:** Solid green LED + tone
- **Power OFF:** Red LED + tone

LED Blinking Indicators	Battery Level Indicators
<ul style="list-style-type: none"><li>• Blinks every 2 sec: Strong GPS signal</li><li>• Solid red: No GPS signal (Blinking LED color reflects battery level)</li></ul>	<ul style="list-style-type: none"><li>• Green: 51-100%</li><li>• Orange: 21-50%</li><li>• Red: 0-20%</li></ul>

## GETTING STARTED

### 1. Download the GPS FENCE SPECIAL EDITION App

- Available on the App Store and Google Play.

Bluetooth 5.0 required



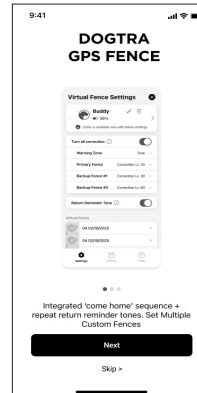
App Store



Google Play

### 2. Pairing Tips

- On first launch, follow the pairing steps to connect the GPS FENCE SPECIAL EDITION Collar to your smartphone.



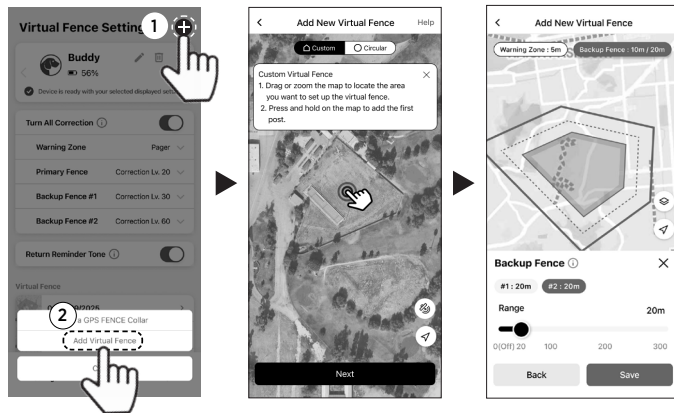
\* If smartphone cannot connect with collar, check the following

- Stay within 30 feet of the collar.
- Ensure the collar is powered on.
- Confirm the collar isn't connected to another device.

# USING THE SYSTEM

## 1. Create a Virtual Fence

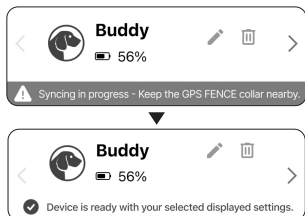
- Open the GPS FENCE SPECIAL EDITION App
- Go to **Settings** → **Add** → **Add Virtual Fence**



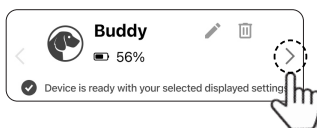
## 2. Update Fence Info to Each Collar

- On the **Settings** page, paired collar will automatically update the Virtual Fence information.
- Update each paired collar individually by swiping through collar windows.
- Keep the collar and smartphone close during updates.  
( 2-3 seconds per collar )

### Automatic update (2-3 sec)

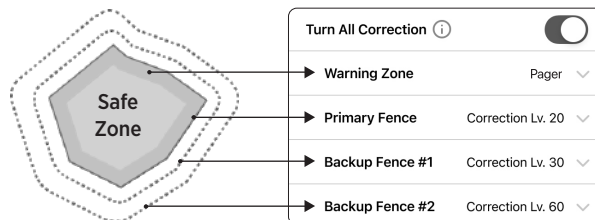


### To update other collar(s)



## 3. Set Corrections Type for Each Virtual Fence layer

- If necessary, you can turn off all correction. Otherwise, leave it on.



- Options include:
  - **Correction** : Up to 5 seconds of continuous stimulation
  - **Pager vibration** : Up to 5 seconds vibration
  - **Tone** : 5-second beep (audible nearby only)
  - **None** : No correction

## 4. Begin Flag Training

- Use flags as visual markers to help your dog understand the boundary.
- This helps the dog associate corrections with the perimeter and learn avoidance.
- See: **Help** → **E-Fence Flag Training Guide** in the app
  - \* Flags sold separately



Click on the QR to start training

For more details & troubleshooting, check out the full online manual here!



# IMPORTANT SAFETY AND PRODUCT INFORMATION

## WARNING

**Please read all safety and product information below before using your Dogtra product. Failure to follow these safety instructions could result in injury to you, your dog and others, or it could result in damage to your Dogtra product or other property.**

## PRODUCT SAFETY

### Training Methods

Dogtra products may be used with a variety of training methods. However, each dog may have a different reaction to training methods and to Dogtra products. Closely observe your dog when determining the right training method to use with your Dogtra product.

### Aggressive Dogs

Do not use Dogtra products with aggressive dogs as such dogs may react adversely and cause injury to people or other dogs. Seek the assistance of a dog-training specialist or veterinarian when dealing with aggressive dogs.

### Children

Dogtra products are not toys. Adult supervision and close attention are necessary when Dogtra products are used by or near children.

## PRODUCT DAMAGE

### Electrical Product

Your Dogtra product contains electrical components and batteries. Do not use or keep your product near heat or flammable sources. Such use or storage may damage your product and/or cause fire, explosion, injury, or property damage.

### Medical Device Interference

Dogtra products contain electrical and magnetic components that emit low level electromagnetic waves and radio frequencies. These electromagnetic waves or radio frequencies may interfere with pacemakers, defibrillators, or other medical devices. Consult your physician or medical device maker before using your medical device around a Dogtra product. If you think that your Dogtra product is interfering with your pacemaker, defibrillator, or other medical device, stop using the Dogtra product.

### Inadvertent Activation

The digital microprocessor offers thousands of unique codes to eliminate

frequency match-up with other Dogtra e-collars. The Constant button will automatically shut down after being held down for 12 seconds or more as a safety feature.

## UNAUTHORIZED USE

Your Dogtra product should be used only in a humane manner to train and educate your dog. Dogtra products are not intended for use in any other manner nor are they intended for use with other animals or with humans.

## BATTERY

Your Dogtra product contains batteries. Take care when removing and installing batteries as your fingers may get caught. Dispose of batteries as provided by your local regulations. Do not disassemble, crush, heat, or otherwise alter the battery as it may cause fire, injury or property damage.

## FCC WARNING STATEMENT

This device complies with Part 15 of the FCC Rules.

Operation is subject to the following two conditions:

- (1) this device may not cause harmful interference, and
- (2) this device must accept any interference received, including interference that may cause undesired operation.

NOTE: This equipment has been tested and found to comply with the limits for a Class B digital device, pursuant to Part 15 of the FCC Rules.

These limits are designed to provide reasonable protection against harmful interference in a residential installation.

This equipment generates, uses and can radiate radio frequency energy and, if not installed and used in accordance with the instructions, may cause harmful interference to radio communications.

However, there is no guarantee that interference will not occur in a particular installation.

If this equipment does cause harmful interference to radio or television reception, which can be determined by turning the equipment off and on, the user is encouraged to try to correct the interference by one or more of the following measures:

- Reorient or relocate the receiving antenna.
- Increase the separation between the equipment and receiver.
- Connect the equipment into an outlet on a circuit different from that to which the receiver is connected.
- Consult the dealer or an experienced radio/TV technician for help.

Changes or modifications not expressly approved by the party responsible for compliance could void the user's authority to operate the equipment.