

Da Dam 2.0 Mobile Disk

User' s Guide

SYS &TECH Co.,Ltd.

www.sysntech.co.kr

rev.1.1

Copyright Notice

Copyright 2004 System & Technologies Co.,Ltd.

The contents of this User Guide and the Installation CD are copyrighted by Sys & Tech Co.,Ltd. Reproduction or modification of the contents in part or whole without prior authorization by Sys & Tech Co.,Ltd. is strictly prohibited.

This product is subject to change without prior notice for the purposes of performance enhancement. The actual installation and usage of the product may be slightly different from the description in this Guide.

For up-to-date information on Da Dam 2.0 Mobile Disk, visit our homepage:
<http://www.sysntech.co.kr>

Trademark

Da Dam 2.0 Mobile Disk is the registered trademark of Sys & Tech Co.,Ltd.

Other company and product names are registered trademarks of the corresponding owners.

Information to the user

NOTE: This equipment has been tested and found to comply with the limits for a Class B digital device, pursuant to part 15 of the FCC Rules. These limits are designed to provide reasonable protection against harmful interference in a residential installation.

This equipment generates, uses and can radiate radio frequency energy and, if not installed and used in accordance with the instructions, may cause harmful interference to radio communications. However, there is no guarantee that interference will not occur in a particular installation. If this equipment does cause harmful interference to radio or television reception, which can be determined by turning the equipment off and on, the user is encouraged to try to correct the interference by one or more of the following measures:

- Reorient or relocate the receiving antenna.
- Increase the separation between the equipment and receiver.
- Connect the equipment into an outlet on a circuit different from that to which the receiver is connected.
- Consult the dealer or an experienced radio/TV technician for help.

CAUTION : Changes or modifications not expressly approved by the party responsible for compliance could void the user's authority to operate the equipment.

Contents

1. Introduction to Da Dam 2.0 Mobile Disk
2. Product Specifications
3. Operation and Usage
4. Drive Install for Windows 98, 98SE.
5. Installing Manager Program
 - 5-1. Da Dam 2.0 Mobile Disk Manager
 - 5-2. How to make a partition
 - 5-3. Changing a Password
 - 5-4. How to Log in
 - 5-5. Boot Up Function
6. Service Guide
7. Precautions for Use
8. Warrantaty

1. Introduction to Da Dam 2.0 Mobile Disk

Da Dam 2.0 Mobile Disk is a portable data storage device using flash memory, replacing the existing FDD. The capacities vary from 32MB to 1GB, and the physical size of the unit is as small as a little finger. It is an elegant next generation product.

Business people who deal with many private documents and presentation files, designers who have to back up graphic files, and students who must submit reports containing various statistics don't have to wrestle with inconvenient 1.44MB FDDs or CDs. With the Plug & Play feature, you can use it anywhere any time by inserting it into a PC or notebook. You are also able to protect your data with a password.

- Ultra small mobile data storage
 - It works on various operating systems without extra driver installation.
- Plug & Play
 - You can read and write data immediately after inserting it into the USB port of a PC or notebook.
- No external power needed
 - Batteries or an external power source are unnecessary since it uses USB power.
- LED Indicator
 - When you insert the Da Dam 2.0 Mobile Disk into the computer port, a red LED flashes repeatedly. In standby mode, it flashes once every second. During any reading and writing, it flashes continuously.

2. Product Specifications

Interface	USB Specification 2.0/(1.1 compatible)
Supported OS	Windows98, SE, ME, 2000, XP, Mac OS 9.0 + , LINUX Kernel Version 2.4.0 + (Driver CD installation needed for Windows 98,SE)
Capacity	32MB, 64MB, 128MB, 256MB, 512MB, 1GB 96MB, 160MB, 320MB, 640MB, 768MB, 1.5GB
Term of Data Preservation	10 years
Read/Write Speed	Read: 8MB/sec, Write: 5MB/sec
Power Supply	USB Bus-powered (No separate power source needed)
Components	Main component, CD,
Manufacturer	Sys & Tech Co.,Ltd. Tel: + 82-(2)3462-1442 Fax :+ 82-(2)3462-4222

3. Operation and Usage

- General Operations

- Install Da Dam 2.0 Mobile Disk to the USB port directly or via an extension cable.
- You can input/output and edit/delete data right after Mobile Disk is connected to the port.

- The following operating systems do not need driver installation:

- Windows ME, Windows 2000, Windows XP, Mac OS 9.0 or higher, Linux Kernel Version 2.4.0 or higher.

- The following operating systems need driver installation:

- For Windows 98 and Windows 98 Second Edition (SE), driver installation is required since the OS itself does not support a Mass Storage Device. (The Driver Install CD is installed only once.)
- For Windows 98/98SE, install the driver with the Auto Install CD supplied by our company.
- After installation, the Mobile Disk is recognized as a Removable Disk as shown below.



[Note1] Be sure to connect the Mobile Disk to the USB port before running the Manager Program.

(See Chapter 4 for installation)

[Note2] For Win98 / Win Me, you must unplug the Mobile Disk after the driver installation and then plug it in for normal operation.

4. Drive Installation for Windows 98, 98SE.

Excess Da Dam 2.0 Disk Win98 Driver.exe in the CD in your computer for installation.

(Also you can download it at Internet Homepage “www.sysntech.co.kr”)

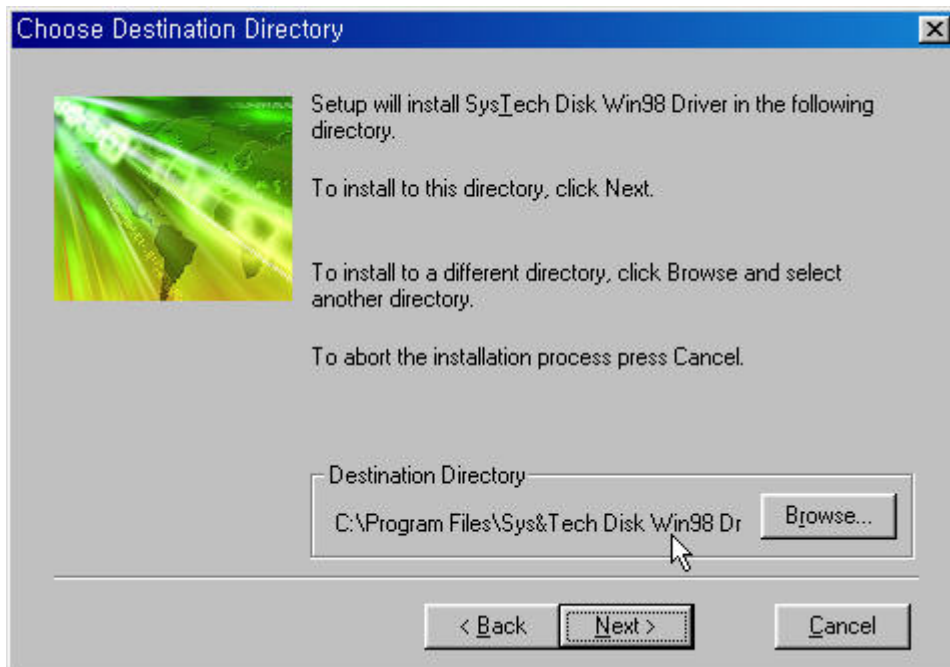
Connect Da Dam 2.0 Mobile Disk to your own PC after installing Sys & Tech Disk Win98 Driver.exe then there would be [Movable Disk].

1) Insert CD to the CD-ROM.

2) Double Click Sys & Tech Disk Win98 Driver.exe.

※ Direction : CD-Rom > Win98_Driver > Sys & Tech Disk Win98 Driver.exe

3) Click the [Next] button.



4) You can see the window of the route as below.

[Click “the yes”.]



Notice: Sometimes you can get a question during installing install magic according to user's circumstance. Take the folder CD-Rom>Win98Driver when you see it.

5) Click “the confirm” after copy the files.



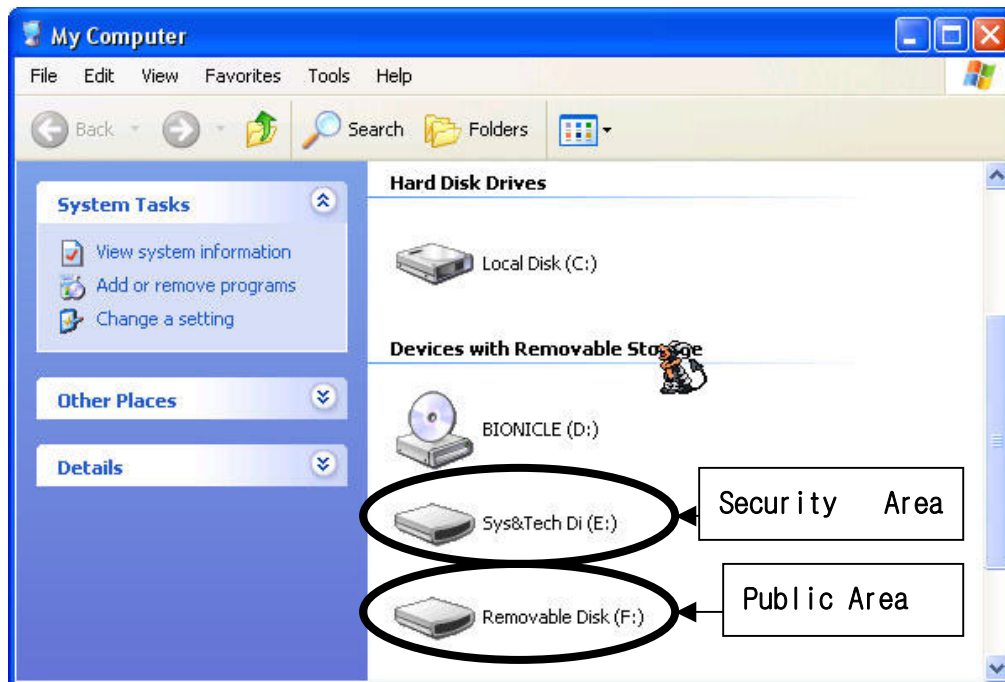
6) Remove Da Dam 2.0 Mobile Disk from the USB port of your PC after installation and then reconfirm if the mobilable disk is recognized well.

4-1.Removing Da Dam 2.0 Mobile Disk safely in Windows 98SE.

For Windows 98SE, Click right button on your mouse follow this route [Window searching] - [Movable Disk] then choose [Disconnect] at popup menu and remove Da Dam 2.0 Mobile Disk safely.

You should check Da Dam 2.0 Mobile Disk의 LED off or not then separate it from USB port.

Ex) When you select Public Area + Security Area, two separate drivers are created.



[Public Area]



[Security Area]

Create Partition

Sys&Tech Disk

There are three modes of partition that you can choose to use. Data in the security area will not be visible until correct password is entered. If you want the entire drive to be public, select "Public Area Only (Single Partition)". If you want two partitions in one drive, select "Public and Security Area (Dual Partiton)".


☐ Public Area Only (Single Partition)

☒ Security Area Only (Single Partition)

☐ Public and Security Area (Dual Partition)

Total Storage Size : 125.0 MB

Security Partition Area : MB

Progress : 

New Password :

Password Hint :

OK Cancel

[Public + Security Area]

Create Partition

Sys&Tech Disk

There are three modes of partition that you can choose to use. Data in the security area will not be visible until correct password is entered. If you want the entire drive to be public, select "Public Area Only (Single Partition)". If you want two partitions in one drive, select "Public and Security Area (Dual Partiton)".

☐ Public Area Only (Single Partition)

☐ Security Area Only (Single Partition)

☒ Public and Security Area (Dual Partition)

Total Storage Size : 125.0 MB

Security Partition Area : MB

Progress : 

New Password :

Password Hint :

OK Cancel

5-3 Changing a Password

- Select "Change Password." When the following window appears, change the password

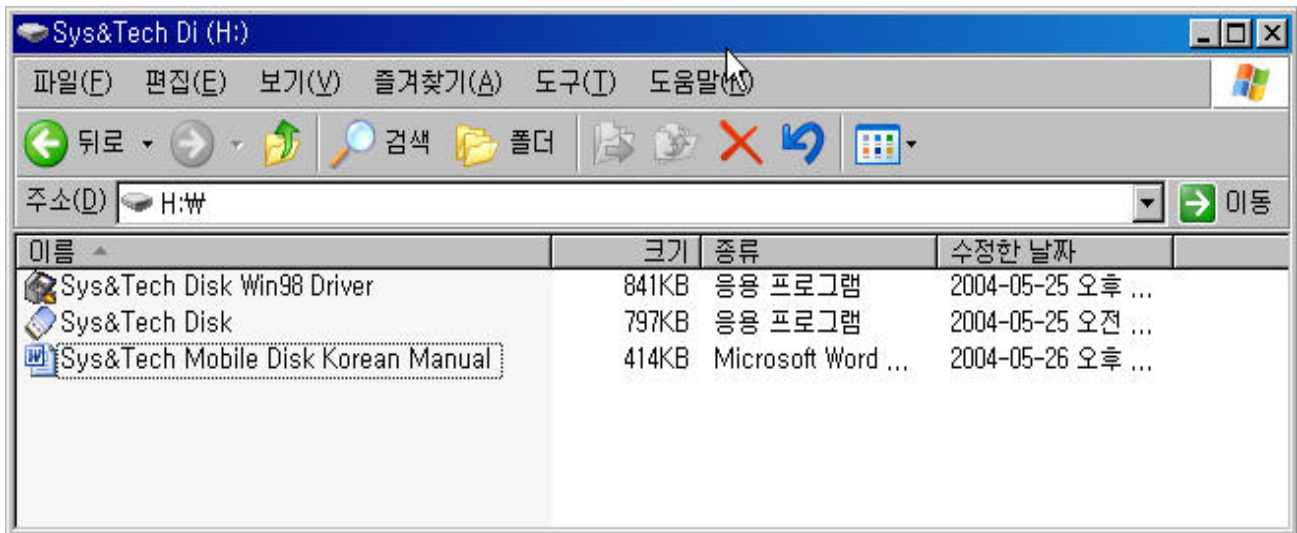


5-4 How to Log in

- Type your own password after logging in.



And then, you can see the following after press "OK".



5-5 Boot Up Function

The Boot Up Function enables the device to perform as a boot disk. (The Main Board must provide USB FDD/HDD/ZIP Bootable features).

Read the following before running the program.

- 1) This program runs on Windows 98 SE, ME, or XP.
(Windows2000 is not supported.)
- 2) Stop the anti-virus program while the program is running.
- 3) A Window's system must be installed on the C Disk.
- 4) This program applies only to one device. (2 or more devices are not supported simultaneously.)
- 5) The device must be in the Public Area.
(When you use this function when logged in, you will be logged out, and all the data in the Public Area will be deleted.)

[Note] If you wish to create a bootable USB HDD, you cannot use the Security Area of the device.

In addition, this option is supported only by Windows 98 SE.

The procedures for Windows 98 SE/Me and XP are different. Please follow the procedures described below. It is not supported by Windows 2000.

(You should get USB FDD/HDD/ZIP Bootable function from MainBoard)

Please follow below things before excess the program.

6) Windows 98 SE / ME

- You can see it as below when to be created booting disk.



- Choose USB HDD or USB ZIP.
(USB HDD is only for Windows 98 SE.)
- If you select USB HDD, "C:W>" appears after booting.
- If you select USB ZIP, "A:W>" appears after booting.
- You can see the caution message after choose the button "OK" as below.
"Caution! Formatting
and deleting all of your data."
- You can see a message as below when it has done.
"Complete success!
Reconnect the Device."

6. Service Guide

Service Guide

Free of Charge Services:

- Services are free for one year after purchase from the Customer Service Center.

However, service is charged for the following cases:

- When product failure results from an error or carelessness on the customer's part (damages due to shock or the entry of foreign substances).
- When product failure results from a repair or product modification by the customer.
- Product damage from natural disasters.

Many products for which service is requested have no faults. Therefore, before calling our Customer Service Center for service, carefully read the User Guide and check for any trouble first. We do not take responsibility for data loss on the mobile storage device.

Customer Service Center

Shinsung B/D, 378-4, Yangjae-Dong, Seocho-Gu, Seoul, Korea

Tel : 82-2-3462-1442

Fax : 82-2-3462-4222

E-mail : khs4693@sysntech.co.kr

Sys & Tech Co.,Ltd.

7. Precautions for Use

- Never remove Mobile Disk until the flashing of the LED completely stops.
Otherwise, the data may be lost.
- In order to safely remove the drive, select Unplug from "Unplug or Eject Hardware" from the Control Panel before removing it.
- If USB hub doesn't have separate power supply. Power consumption might cause faulty detect of USB. Therefore in this case please use USB port within your computer
- If there's an error message during saving, please check the connection status
- If you still cannot fix the problem please format your software and try again. You can use software Da Dam 2.0 Mobile Disk included in CD of our product to format
- Da Dam 2.0 Mobile Disk also supports to format windows and flash memory itself completely.

Thus you can use our product more efficiently

-Disjoint the product and it does not shift the parts roll up

- It does not contact roll up the product in the water or the liquid. When the liquid of water enters inside the product, you must separate it from PC immediately. When continuously it uses, it may be burned or, there is a danger which will get a shock to an electricity

- When exposed to a direct ray of light, the product may change in shape, so make sure it's not exposed
- Please do not leave the product at near place where emits strong electromagnetic field.

The strong electromagnetic field could erase the data inside or decrease the function of the product.

WARRANTY

This product is manufactured and tested strictly by Sys & Tech Co.,Ltd.

If there are some manufacturing problems or natural errors, these products can be guaranteed according to this warranty.

Brand Name			
Model Name			
Sales Date		Warranty Validity	1year
Sales price		\$	
Sales Branch	Branch Name		
	Tel.		
Customer Info.	Address		
	Name		
	Tel.		

- * Please confirm if there's something not mentioned on the warranty.
- * Please submit the warranty when you need services.
- * Don't lose this warranty because it is not issued again.

Free of Charge Service

- Services are free for one year after purchase from the Customer Service Center.

However, service is charged for the following cases:

- When product failure results from an error or carelessness on the customer's part (damages due to shock or the entry of foreign substances).
- When product failure results from a repair or product modification by the customer.
- Product damage from natural disasters.
- Even though the warranty is valid, in case of third time service, It may be rejected.

When you store and keep the data at mobile disk, you would better use it after back up the data safely.

We are not responsible for the data loss of mobile disk

