

nyne

Nyne TT

Bluetooth Speaker Series

Quick User Guide

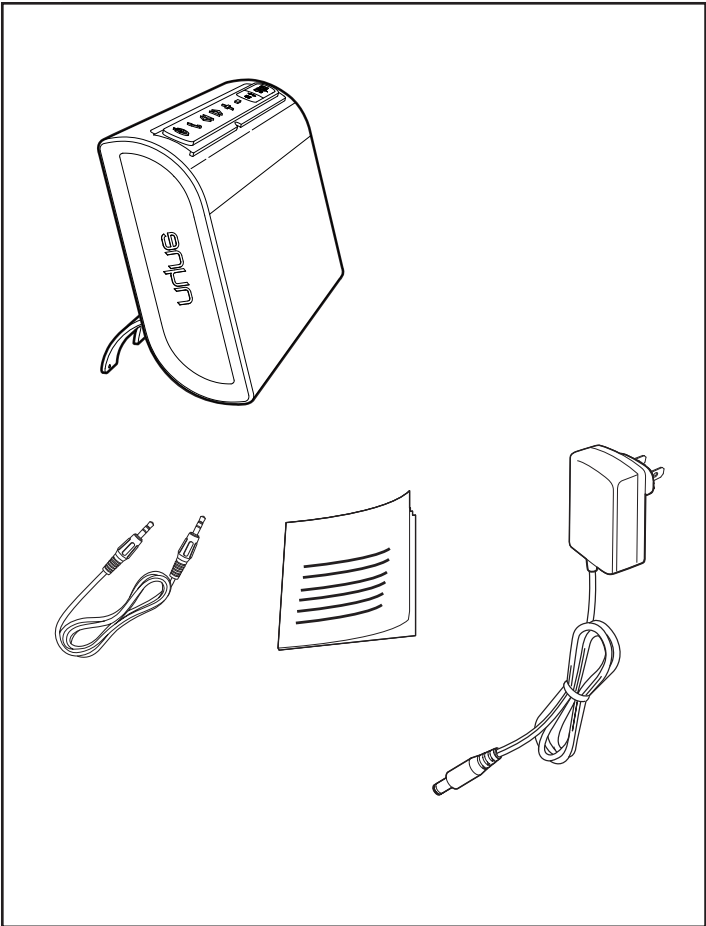
nyne.com

CE 2200

QUG-TT-11-3-2013-V.1.0

All registered and unregistered trademarks are property of their respective owners.
Nyne Multimedia Inc.
All rights reserved.

nyne



1

EN Extend the stand and place the speaker on a hard flat surface.

2

EN Connect power.

Tip: The speaker is only compatible with the original power adapter included in the package.



1

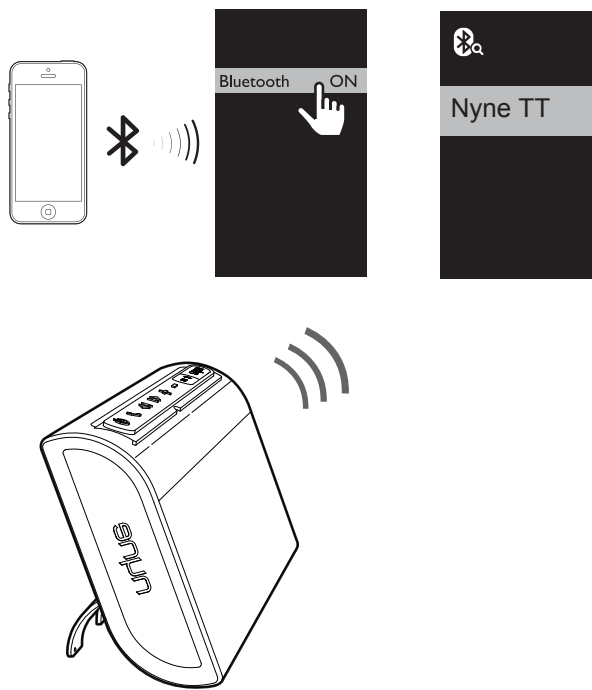
EN Slide the power switch to the **ON** position.
 The built-in battery starts charging automatically.

Tip: The speaker is fully charged when the indicator turns from white to green. You can use either the AC power or built-in battery as power supply.

2

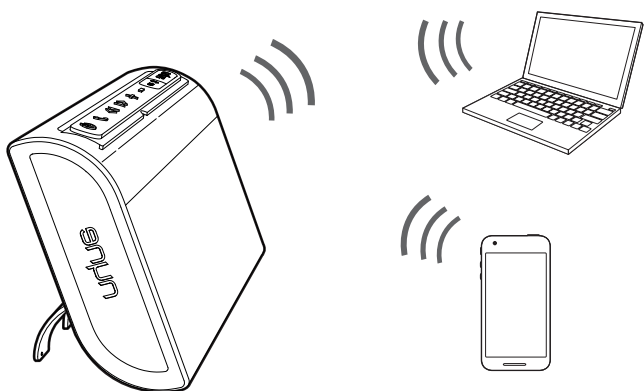
EN Press to power on.
 The Bluetooth indicator flashes blue, indicating that the speaker is in pairing mode.

Tips: If there is no power to the speaker after you press the power button, check that:
(1) the speaker is connected to AC power or the battery is fully charged;
(2) you have slid the power switch to the **ON** position.
If the problem remains, slide the power switch to the **OFF** and then **ON** position again.
You can press again or slide the power switch to the **OFF** position to power off.
To save power, the speaker turns off automatically after 30 minutes of inactivity.



- EN
- (1) Make sure that the speaker is in pairing mode.
 - (2) Enable Bluetooth on your device to be paired with the speaker.
 - (3) Select 'Nyne TT' from the available devices (enter the password '0000' if necessary) to start pairing and connection with the speaker.
 - (4) After successful connection, the Bluetooth indicator turns solid blue and the speaker beeps.

Tips: This speaker supports automatic connection with a previously paired device after power-off and power-on again.
You can press and hold for more than 2 seconds to enter manual pairing mode. In this way, you can pair the speaker with a new Bluetooth device.
You can press and hold both and for more than 10 seconds to clear all paired Bluetooth devices.
This speaker is Siri-compatible.

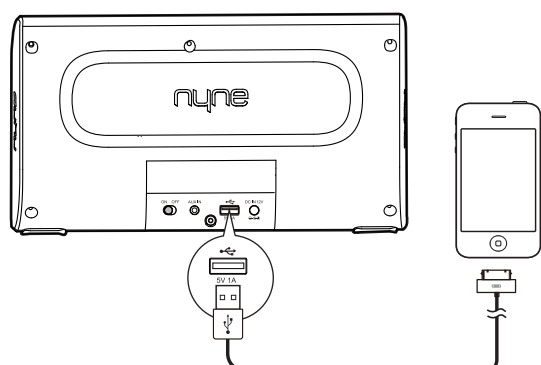


- EN
- Play music on your device paired and connected with the speaker.
During music play:
- Press to adjust volume.
 - Press to skip to the previous or next song.

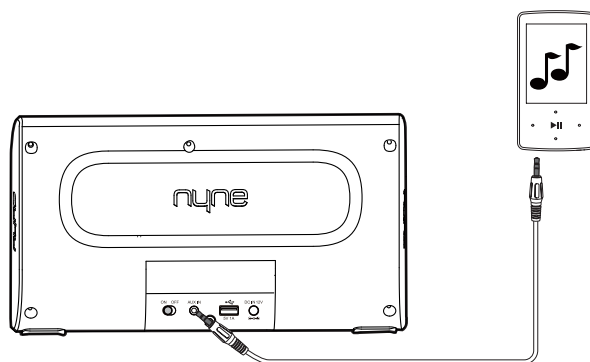
When you make a call or there is an incoming call, you can use the speaker as a speaker phone.

- When there is an incoming call, you can press to receive the call.
- During a call, you can press to end the call.
- When using Siri on your Apple devices, you can press twice to enable Siri support on the speaker.

Tips: Music play is paused during a call and resumed automatically when the call ends.
You can press and hold to disconnect the current Bluetooth connection.



- EN
- Charge your mobile device through the 5V USB charging socket.



- EN
- (1) Connect an auxiliary audio device to the speaker through the supplied 3.5mm audio cable.
 - (2) Play and control music on the audio device, and use on the speaker to adjust volume if necessary.

Tip: When the 3.5mm audio cable is plugged in, the speaker switches to AUX IN mode automatically. When it is unplugged, the speaker switches back to Bluetooth mode and connects with the previously paired device automatically. If no device is available, the speaker enters pairing mode.

