



# MV900

Hands-Free Anywhere



User Manual





**T**hank you for purchasing the mVox MV900 portable speakerphone. The MV900 is a true hands-free speakerphone with built-in DSP voice processing technology, speaker independent voice dialing, and Bluetooth connectivity. The DSP-enabled echo cancellation and noise suppression allow natural and smooth full-duplex conversations, whether you're driving under noisy highway conditions, engaging in a conference call through Voice over IP (VoIP), or just sitting in front of your computer chatting on Instant Messenger (IM). An earpiece is also included for private conversations. Get ready to experience the best in handsfree communication!

## Function Modes and Compatibility

The MV900 can operate in 3 modes:

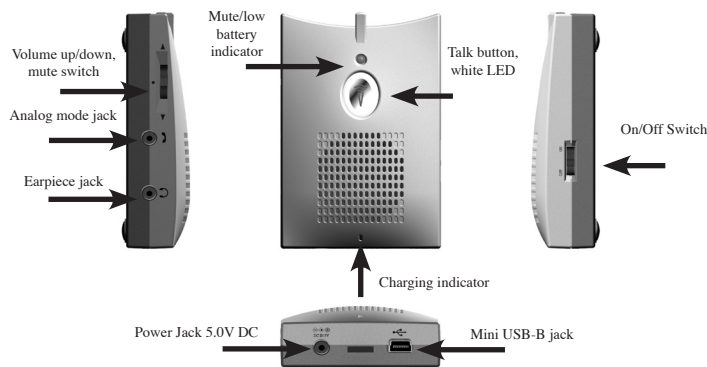
- As a Bluetooth speakerphone when paired with a Bluetooth-enabled cellular phone
- As a USB speakerphone when plugged into an internet-ready computer with IM or VoIP software
- As a speakerphone for your desktop phone when used with an optional adapter

The MV900 is designed to work with any Bluetooth-enabled cellular phone, virtually any IM or VoIP software, and most desktop phones.

## Turning On Your MV900

To turn on the unit, slide the On/Off Switch to the On position. When the unit is powered on, the white LED under the Talk Button will turn on and flash.

After the unit is turned on, the unit will try to connect to the last cellular phone paired. If the cellular phone cannot be found, the unit will voice prompt "Cellphone unavailable". If successfully connected to a cellular phone, it will generate a low beep tone.





## Charging

To charge the unit, use the included AC adapter or connect to a USB port on a computer.

**Note:** A bus-powered USB hub cannot supply enough current for charging. We recommend plugging the unit directly into the computer's USB port or using a self-powered USB hub. A self-powered USB hub has its own power supply via an AC adapter, while a bus-powered USB hub draws its power through the USB bus, without an AC adapter.

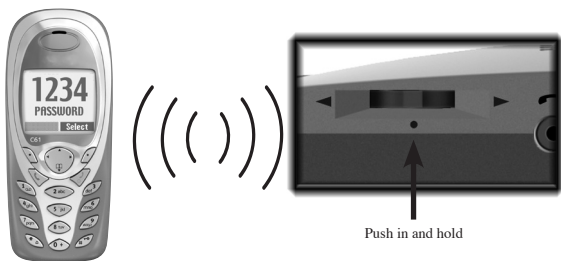
While the unit is charging, the charging indicator will show red. The indicator will turn green when the unit is fully charged.

## Using as a Bluetooth Speakerphone with Cellular Phones

### Pairing with a Bluetooth Device

To pair with a Bluetooth-enabled cellular phone, press in and hold the volume switch on the MV900 until the white LED is on (the unit will beep twice). The device is now in the pair mode. Follow your cellular phone's Bluetooth connection instructions to pair the device. The password for the MV900 is "1234".

After pairing, the unit should either automatically connect to the cellular phone or the user can manually connect on the cellular phone. Some cellular phones might drop the connection after the initial pairing. Users can press and release the volume switch to reconnect with these cellular phones. A low tone will be heard if connected successfully. If the unit cannot connect with the cellular phone, it will voice prompt "Cellphone unavailable".





## Functions in Bluetooth Mode

Function	Action
Pick up call	Press & release talk button
Hang up call	Press & release talk button
Volume up	Press up on volume switch
Volume down	Press down on volume switch
Mute Microphone	Press in on volume switch (red LED lights up to indicate that the mic is muted)
Dial out using name dialing function on cellular phone	Press & hold talk button, wait for tone from the cellular phone, then say the voice tag that was recorded on the cellular phone.
Transfer call to handset	Press in volume switch (mute LED lights up), then press talk button to transfer call to the cellular phone
Transfer call to speakerphone	Press talk button to transfer call to the MV900

## Using as a USB speakerphone

To use the MV900 as a USB speakerphone for conference calls and chatting through IM and VoIP applications, simply plug the unit into a USB port on the computer (with the included USB cable). Now you have a speaker and microphone all in one small package. After connecting to the USB port, use the computer's volume control panel to access volume up, volume down, and mute controls. Users can also adjust speaker and microphone volume settings in the Adjust Audio Properties menu of the operating system.

## Using with Desktop Phones

The MV900 includes an analog mode, which is designed to connect to the handset of a desktop phone through an optional adapter (available on [www.mvox.com](http://www.mvox.com)). This allows a regular landline telephone to be used as a speakerphone.

## Headset mode (Privacy mode)

The MV900 includes an earpiece for private conversations through an optional headset.



## Using the Voice Command Recognition and Voice Keypad (VKP)

To get into the voice command recognition mode, first press and release the Talk button, then wait for voice prompt "please say command." Proceed by saying one of the following commands.





## Voice Commands Supported

Command	Command Description
Home	Dial Home number stored in memory
Work	Dial Work number stored in memory
Voicemail Home	Dial Home voicemail stored in memory
Voicemail Work	Dial Work voicemail stored in memory
Voicemail Cellphone	Dial Cellphone voicemail stored in memory
Last number	Dial last number (Redial)
Setup menu	Enter setup menu
Cellphone name dialing	Activate cellular phone voice dialing
Dial number	Dial by using voice keypad
Speed dial One	Dial speed dial one on the Cellphone
Speed dial Two	Dial speed dial two on the Cellphone
Speed dial Three	Dial speed dial three on the Cellphone
Speed dial Four	Dial speed dial four on the Cellphone
Speed dial Five	Dial speed dial five on the Cellphone
Speed dial Six	Dial speed dial six on the Cellphone
Speed dial Seven	Dial speed dial seven on the Cellphone
Speed dial Eight	Dial speed dial eight on the Cellphone
Speed dial Nine	Dial speed dial nine on the Cellphone
Memory One	Dial memory one number stored in memory
Memory Two	Dial memory two number stored in memory
Memory Three	Dial memory three number stored in memory
Memory Four	Dial memory four number stored in memory
Memory Five	Dial memory five number stored in memory
Memory Six	Dial memory six number stored in memory
Memory Seven	Dial memory seven number stored in memory
Memory Eight	Dial memory eight number stored in memory
Memory Nine	Dial memory nine number stored in memory



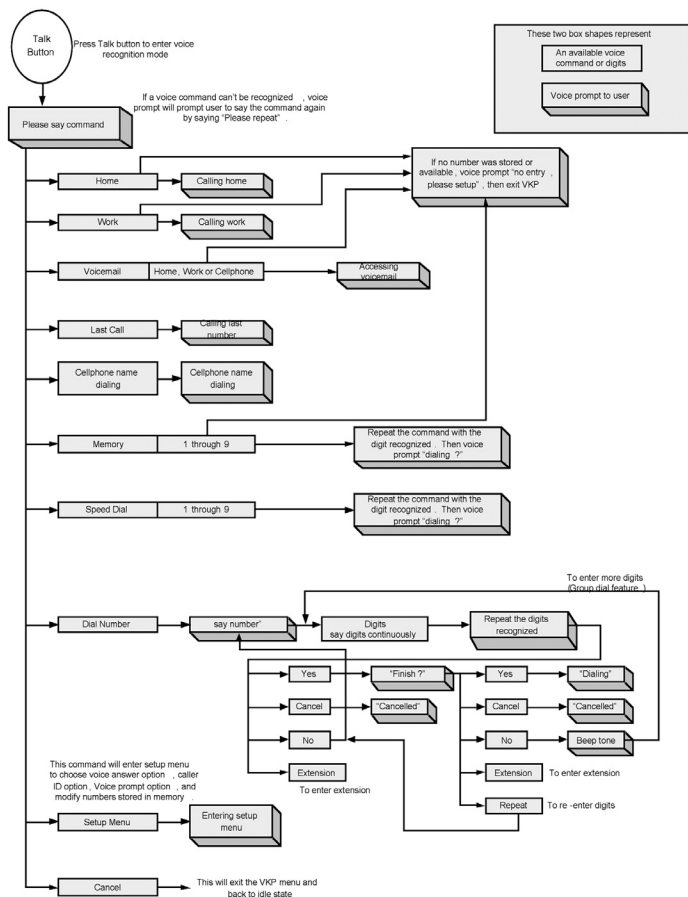
### Confirmation Commands Supported

Command	Command Description
Yes	Confirm
No	Repeat or re-enter, and enter more digits if say after the unit voice prompts "Finish?"
Cancel	Cancel and exit
Extension	To enter extension in (only available after entering numbers by using Voice Keypad)
Repeat	Repeat or re-enter numbers after the voice prompt "finish?"

### Voice Keypad (VKP)

Keypad	Keypad Description
0	Number zero ( <b>note:</b> say "zero" since the program will only recognize "zero")
1	Number one
2	Number two
3	Number three
4	Number four
5	Number five
6	Number six
7	Number seven
8	Number eight
9	Number nine

## Dialing out using Voice command and VKP



### Note:

1. "Home", "Work", "Voicemail Home, Work or cellphone", and "Memory 1 through 9" require users to set up the number in the setup menu first. Please refer to the setup menu section for information on how to enter numbers.
2. Please see group dial feature for more detail on number dialing function with VKP.



### Group dial feature in VKP:

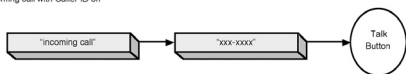
MV900's number- dialing function with VKP also supports group dial feature. The group dial feature will allow user to break up the telephone number into several groups to enter into the unit. This is especially useful when calling with a calling card, long distance or international calls with larger number of digits.

After each group of digits is entered and confirmed with “Yes”, the unit will voice prompt “Finish?” If the user replies with “yes”, the unit will dial the digits that were just confirmed. But if the user replies “No”, the unit will generate a beep tone then the user can say the next group of digits. This process can be repeated continuously until all the digits are entered.

One special case might happen is that if the unit didn't recognize the digits correctly and the user didn't reply in time or the unit misrecognized the confirmation command, the unit will assume it's a “Yes” then voice prompts “Finish?” In order for the user to re-enter the group of incorrect digits, he/she can say “Repeat” to go back and input the digits again. Another alternative is to say “Cancel” to start over.

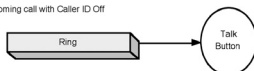
### Pick up an incoming call:

Incoming call with Caller ID on



Press Talk button to answer a call

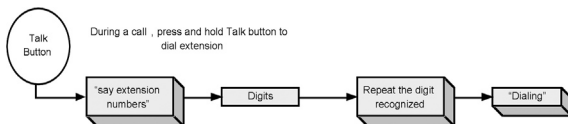
Incoming call with Caller ID Off



Press Talk button to answer a call

### Dial extension using VKP during an active call:

After a call is connected or during an active call, if user needs to dial extension, first press and hold the Talk button. After the unit voice prompts “say extension number”, then say the extension numbers.



During a call , press and hold Talk button to dial extension

**Note:** Make sure to Press and Hold (long press), be careful that press and release (short press) will hang up the call instead.







## Setup Menu

To enter setup menu, first press Talk to get into the Voice Command mode. After the unit prompts “please say command,” then say “setup menu.” The unit will voice prompt “setup menu” to indicate setup menu state.

Once in setup menu, first say one of the number type commands, then follow the voice prompt to enter the telephone number and extension. There are also three setup option commands.

**Note:** *If the device is not connected to a cellular phone, to get into setup menu, press in the volume/mute switch and Talk button at the same time to get into setup menu.*

To exit Setup menu, press Talk or say the command “cancel.” You will hear the voice prompt “canceled.”

There is also a 10 second activity timer: if there’s no activity, the device will exit the setup menu. If there is an incoming call, first exit the setup menu, then follow the incoming call routine.

## Number Type Commands in Setup Menu

Commands	Command Description
Home	To input home number into the memory
Work	To input work number into the memory
Voicemail Home	To input home voicemail number into the memory
Voicemail Work	To input work voicemail number into the memory
Voicemail Cellphone	To input Cellphone voicemail number into the memory
Memory One	To input memory one number into the memory
Memory Two	To input memory two number into the memory
Memory Three	To input memory three number into the memory
Memory Four	To input memory four number into the memory
Memory Five	To input memory five number into the memory
Memory Six	To input memory six number into the memory
Memory Seven	To input memory seven number into the memory
Memory Eight	To input memory eight number into the memory
Memory Nine	To input memory nine number into the memory

**Note:** *Each number can be stored with extension.*



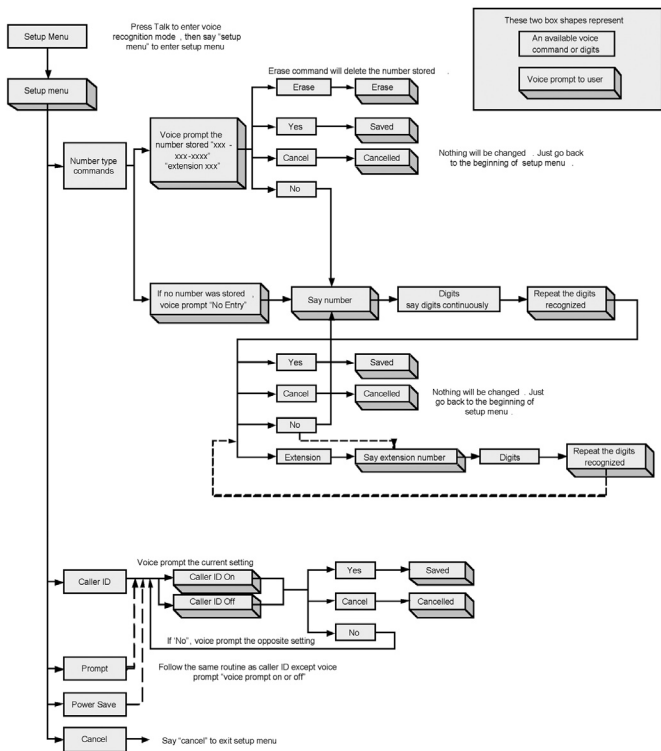
### Setup Option Commands in Setup Menu

Commands	Command Description
Prompt	To turn on or off voice prompt during voice recognition mode
Caller ID	To turn on or off called ID
Power Save	To turn on or off power save feature in Bluetooth

**Note:** For power save option, only select Bluetooth phones support this feature. If the feature is turned on and the phone does not support this feature, the Bluetooth connection might not work properly.

### Confirmation Commands in Setup Menu

Command	Command Description
Yes	Confirm
No	Repeat or re-enter, and enter more digits if say after the unit voice prompts "Finish?"
Cancel	Cancel and exit
Extension	To enter extension after input telephone number
Erase	To delete the number stored
Repeat	Repeat or re-enter numbers after the voice prompt "finish?"





**Table for numbers stored in MV900's memory**

Number Type	Number	Extension
Home		
Work		
Voicemail Home		
Voicemail Work		
Voicemail Cellphone		
Memory 1		
Memory 2		
Memory 3		
Memory 4		
Memory 5		
Memory 6		
Memory 7		
Memory 8		
Memory 9		

### **Regulatory Information**

This product was tested and complies with the limits for a Class B digital device under Part 15 of the U.S. Federal Communications Commission (FCC) rules, and is subject to these conditions: It may not cause harmful interference and must accept any interference received, including any that causes undesired operation. These limits are designed to provide reasonable protection against harmful interference in a residential installation. This equipment generates, uses, and can radiate radio frequency energy and, if not installed and used in accordance with the instructions, may cause harmful interference to radio communications.

### **Limited Warranty**

mVox Electronics, Inc. warrants the mVox MV900 to be free of defects for a period of 90 days from the date of purchase. In the event of a defect in material or workmanship during the warranty period, mVox, at its discretion, will repair or replace the defective product.

The remedy for this breach of warranty is limited to servicing or replacement only and shall not cover any other damages, including but not limited to the loss of profit, special incident, consequential, and other similar claims. In no event will mVox be liable for any amount greater than the currently suggested retail price.



➤ **FCC Warning statement:**

**This device complies with Part 15 of the FCC Rules. Operation is subject to the following two conditions:**

- (1) This device may not cause harmful interference.**
- (2) This device must accept any interference received, including interference that may cause undesired operation.**

**This equipment has been tested and found to comply with the limits for a class B digital device, pursuant to part 15 of the FCC Rules. These limits are designed to provide reasonable protection against harmful interference in a residential installation.**

**This equipment generates, uses and can radiate radio frequency energy and, if not installed and used in accordance with the instructions, may cause harmful interference to radio communications. However, there is no guarantee that interference will not occur in a particular installation. If this equipment does cause harmful interference to radio or television reception, which can be determined by turning the equipment off and on, the user is encouraged to try to correct the interference by one or more of the following measures:**

- Reorient or relocate the receiving antenna.**
- Increase the separation between the equipment and receiver.**
- Connect the equipment into an outlet on a circuit different from that to which the receiver is connected.**
- Consult the dealer or an experienced radio/TV technician for help**

**Any changes or modifications (including the antennas) made to this device that are not expressly approved by the manufacturer may void the user ' s authority to operate the equipment.**

**FCC RF Radiation Exposure Statement: This equipment complies with FCC RF radiation exposure limits set forth for an uncontrolled environment. This device and its antenna must not be co-located or operating in conjunction with any other antenna or transmitter.**