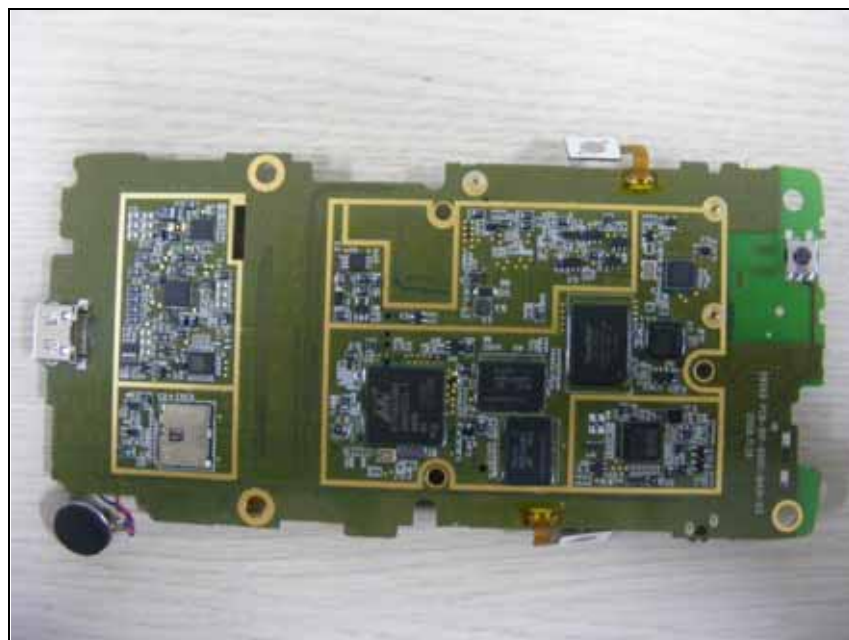


Internal photos of EUT

Internal view of EUT



Top view of Main PCB



Bottom view of Main PCB



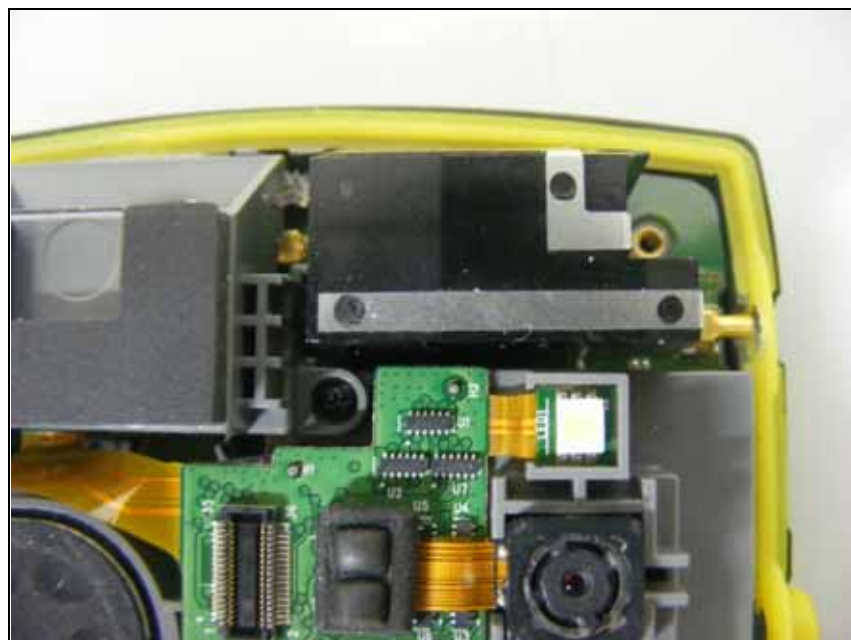
Front of 2G & 3G Module (Can't remove shield cap)



Bottom of 2G & 3G Module



Antenna of 2G & 3G Module



Front of RFID PCB



Bottom of RFID PCB



Top of Sub- PCB



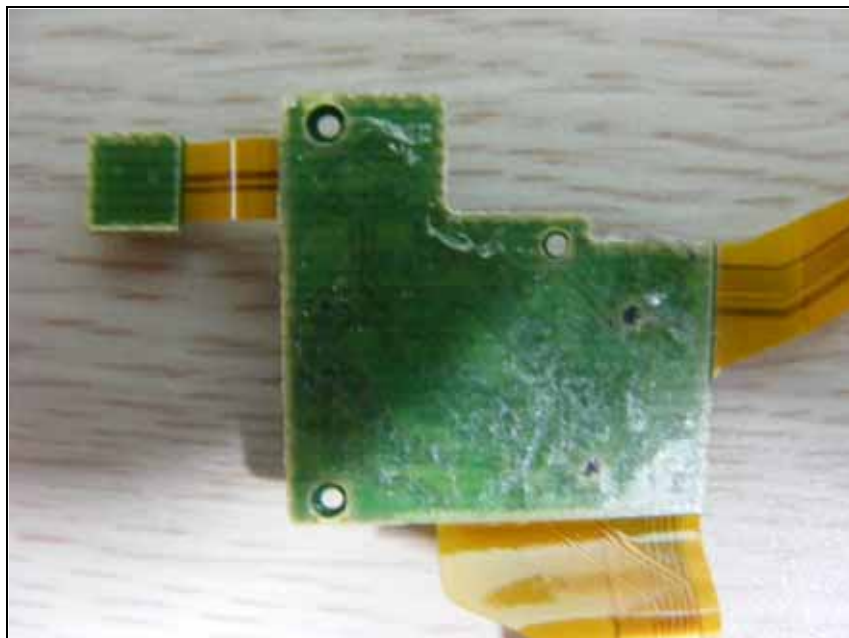
Bottom of Sub- PCB



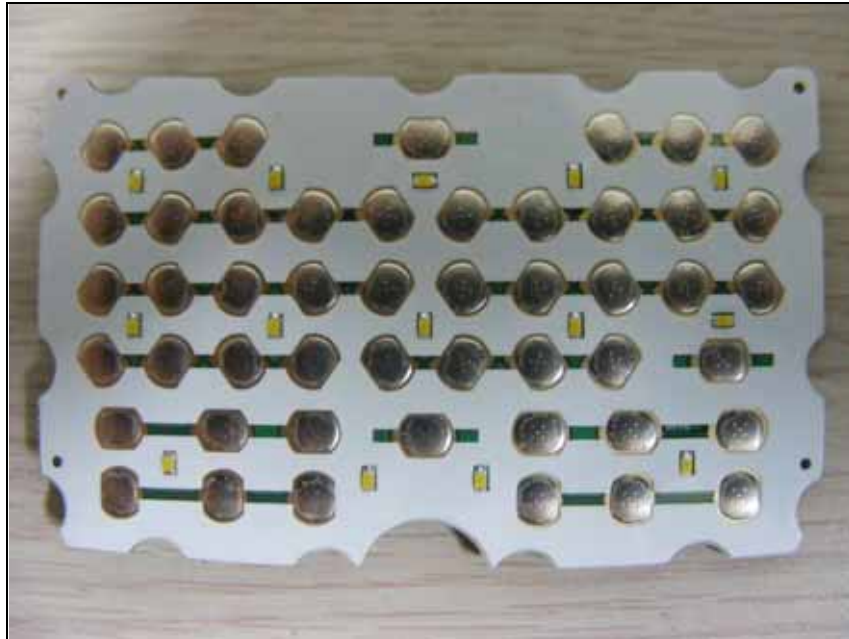
Top of Sub- PCB



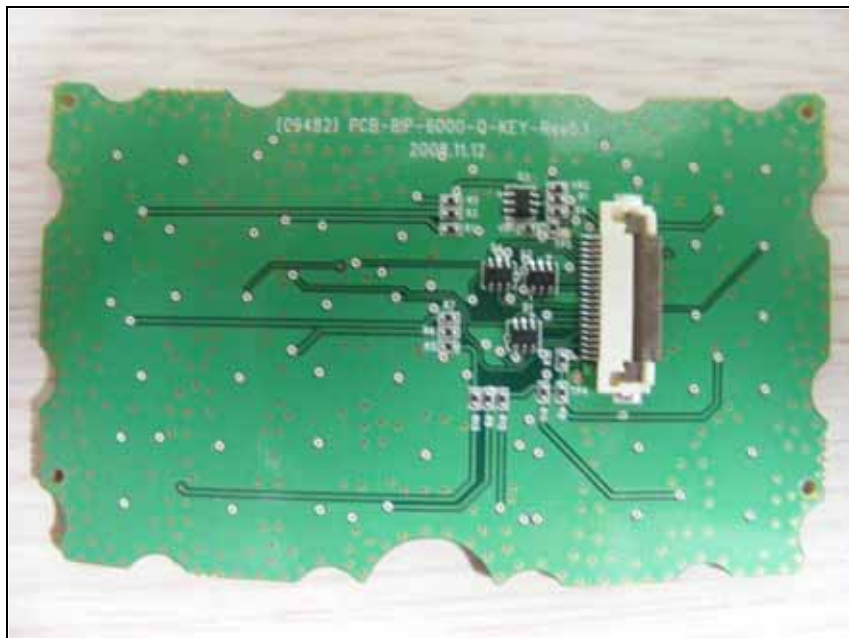
Bottom of Sub- PCB



Top of Key-pad



Bottom of Key-pad



Top of Display



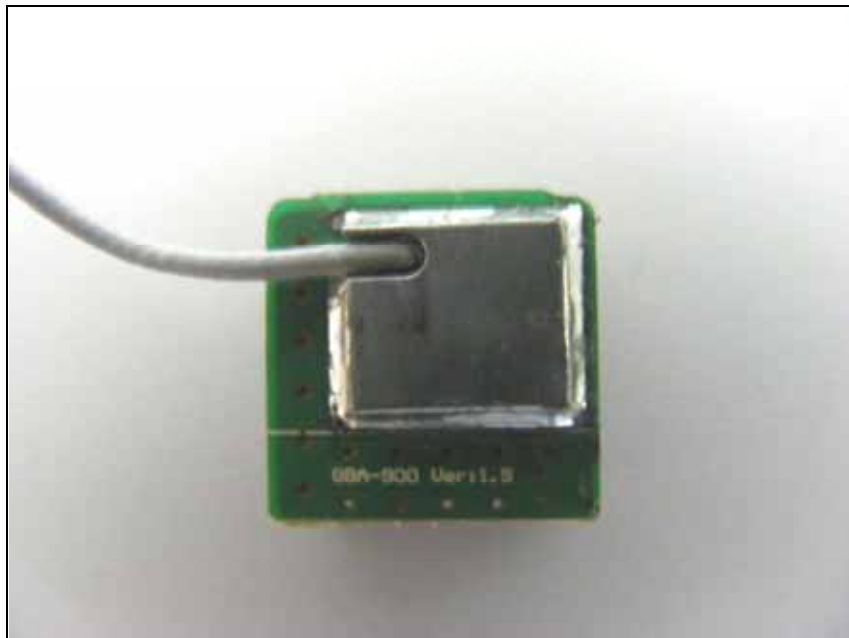
Bottom of Display



Top of GPS



Bottom of GPS (Can't remove shield cap)



Antenna of BT



Antenna of WLAN

