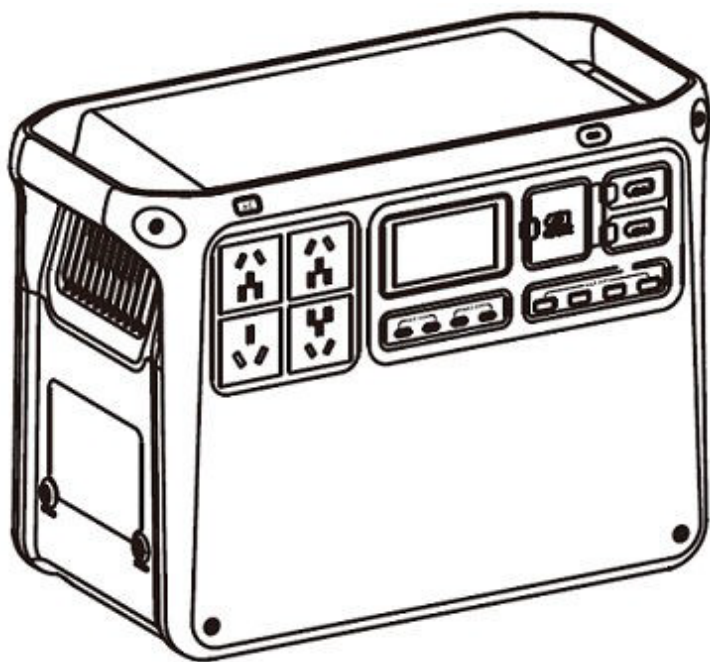


# **dji** POWER 2000

## User Manual

v0.1





This document is copyrighted by DJI with all rights reserved. Unless otherwise authorized by DJI, you are not eligible to use or allow others to use the document or any part of the document by reproducing, transferring or selling the document. Users should only refer to this document and the content thereof as instructions to operate DJI products. The document should not be used for other purposes.

### Searching for Keywords

Search for keywords such as “battery” and “install” to find a topic. If you are using Adobe Acrobat Reader to read this document, press Ctrl+F on Windows or Command+F on Mac to begin a search.

### Navigating to a Topic


View a complete list of topics in the table of contents. Click on a topic to navigate to that section.


### Printing this Document

This document supports high resolution printing.

# Using this Manual

## Legend

 Important

 Hints and Tips

## Read Before Use

DJI™ provides users with tutorial videos and the following documents.

1. Safety Guidelines
2. Quick Start Guide
3. User Manual

It is recommended to watch all tutorial videos and read the safety guidelines before using for the first time. Prepare for your first use by reviewing the quick start guide and refer to this user manual for more information.

## Tutorial Videos

Click the link below or scan the QR code to watch the tutorial video to ensure correct and safe use of this product.



<https://www.dji.com/power-2000/video>

## Download DJI Assistant 2

Download DJI ASSISTANT™ 2 (Power Series) at:

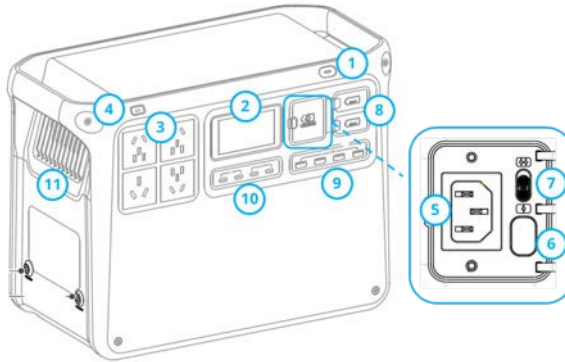
<https://www.dji.com/downloads/softwares/dji-assistant-2-power-series>

# Contents

Using this Manual	3
Legend	3
Read Before Use	3
Tutorial Videos	3
Download DJI Assistant 2	3
Contents	4
1 Overview	5
DJI Power 2000	5
Display Screen	6
2 Basic Usage	8
Power On/Off	8
Connect to DJI Home App	8
AC Recharging	9
AC output	10
USB output	11
3 Accessories	12
SDC output	12
Expand capacity	13
Car Scenario	14
Solar Power Scenario	15
Solar Power + RV Scenario	16
4 <b>Uninterruptible Power Supply (UPS)</b>	17
5 Appendix	18
Specification	18
Compatibility	18
Firmware Upgrade	18
Log Export	19
Trouble Shooting	20
Maintenance	20
Disposal	20

# 1 Overview

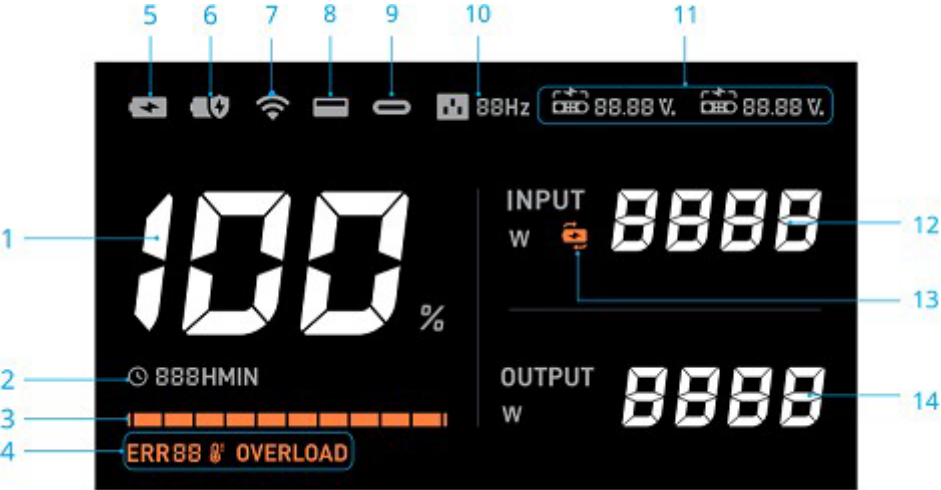
## DJI Power 2000





1. Power button
2. Display screen
3. AC output port <sup>[1]</sup>
4. AC output button (AC button)
5. AC input port
6. Charging mode switch
7. SDC port
8. USB-A port
9. USB-C port
10. Ventilation and cooling vent

[1] Depending on the country and region, the actual appearance and structure of the product may differ from the illustration. Please refer to the actual product.

# Display Screen



- 1. Remaining battery percentage
  - 2. When the power is supplying external devices, it shows the remaining available time. When charging, it shows the time required to charge to 100%. When charging and supplying power externally at the same time, if the output power is greater, it shows the charging time required; otherwise, it shows the remaining available time.
  - 3. Power level indicator  
When the power is charging, the power level indicator flashes in a loop. When supplying power to other devices, the last segment of the power level indicator flashes.
  - 4. Abnormal alert  
**ERR88** : Abnormal prompt code  
 Temperature abnormality. A steady icon indicates that the power supply temperature is too high or too low. Use it after the power supply returns to normal temperature.  
**OVERLOAD** : Overload alert
- 
-  You can visit <https://s.dji.com/DJI-Power> for details on the fault and corresponding solutions.
- 
- 5. Fast recharge mode
  - 6. Standard recharge mode

7. Wi-Fi connection status

A steady icon indicates a successful Wi-Fi connection. A flashing icon indicates that Wi-Fi is not connected or unavailable.

8. USB-A port

9. USB-C port

10. AC output frequency

When the operating frequency of the power supply does not match the frequency of the AC mains (for example, when used in different regions), the device can only charge and cannot supply power externally. At this time, an abnormal prompt code (ERR13 or ERR14) appears on the screen. Press and hold the AC button for more than 10 seconds to switch the frequency and restore normal operation.

11. SDC port



: Use the SDC interface for charging (or external power supply).

88.88 V

: Voltage value when using the SDC interface for charging (or external power supply).

88.88 %

: When using the SDC interface to power DJI aircraft batteries, the battery level is displayed.

12. Input power

13. Uninterruptible Power Supply (UPS)

14. Output power

## 2 Basic Usage

### Power On/Off

Power On/Off: Press and hold the power button for more than 2 seconds.

Turn On/Off the Display: In the power-on state, press the power button once briefly.



### Connect to DJI Home App

1. Scan the QR code below to download the DJI Home App.



2. Enable Bluetooth and WiFi on your phone, run the DJI Home App, and follow the instructions to connect the device.



- To check the Android and iOS system versions supported by the app, please visit <https://www.dji.com/downloads/djiapp/dji-home>.
  - The app interface will be continuously updated, and the actual display effects and included features are subject to the app version used.
-



## AC Recharging

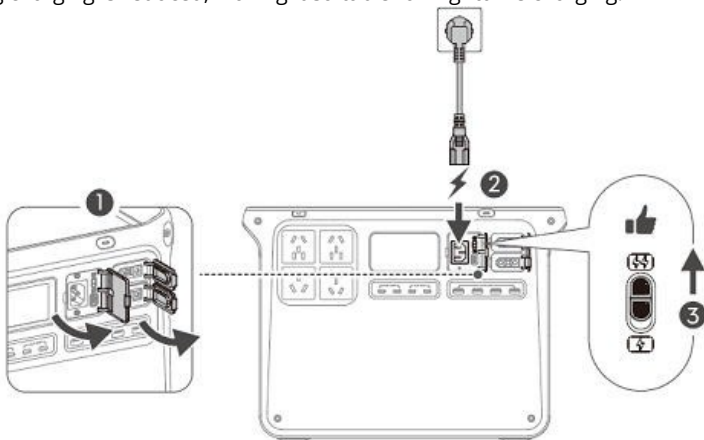
1. Open the interface protection cover, and use the AC power cable included in the package to connect the AC input interface of the power supply to the mains.
2. Toggle the charging mode switch to select either fast charging mode or normal mode for charging.



**Fast recharge mode:** The charging power is relatively high, allowing the power supply to be quickly fully charged, suitable for daily charging use.

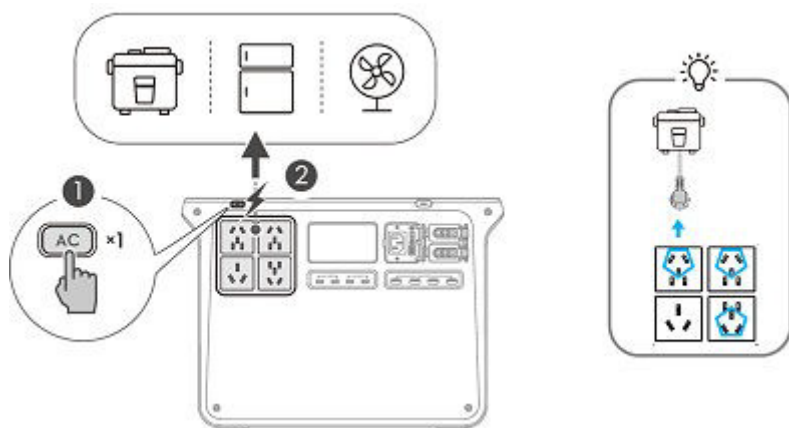


**Standard recharge mode:** The charging power is relatively low, and the noise during charging is reduced, making it suitable for nighttime charging.



- After charging is complete, please disconnect from the mains.
- To extend the lifespan of the power supply's battery cells and enhance the user experience, it is recommended to use normal mode for AC charging.
- If fast charging mode is used for five consecutive cycles, after the sixth fast charging cycle ends, it will automatically switch to normal mode for charging maintenance, which lasts about 20 minutes.
- During fast charging mode, the screen's temperature anomaly icon flashes slowly, indicating that the battery cell temperature is too high or too low. To ensure battery cell lifespan and safety, the charging power will be reduced.

## AC output



After powering on, connect the electrical device to the AC output port of the power supply, press the AC button once briefly, and after hearing the prompt sound, power supply can be provided. At this time, the AC button indicator light breathes and flashes.

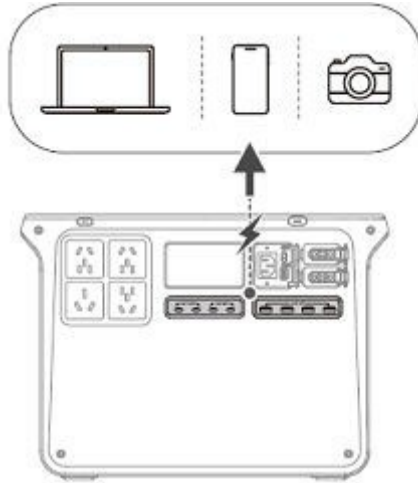
If the power supply does not provide power to AC devices for more than 30 minutes, the AC output will be turned off.

After turning off the AC output, if the power supply does not connect to any device for power supply and does not charge for more than 60 minutes, it will shut down. The above times can be set in the DJI Home App.

To connect intermittently working electrical devices such as refrigerators, press and hold the AC button, and after hearing the prompt sound, the power supply can provide continuous power. At this time, the AC button indicator light remains on.

- 
- Due to the internal electronic components having a waterproof coating, there may be a slight odor during high-power output, which is a normal phenomenon. It can naturally dissipate with regular use.
-

## USB output



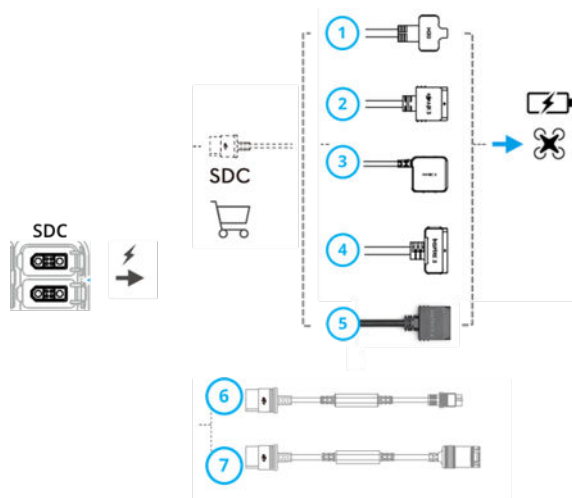
After powering on, connect the electrical device to the power supply's USB-A or USB-C port for power supply.

## 3 Accessories

⚠ Unless otherwise specified, accessories need to be purchased separately. Visit <https://www.dji.com/power-2000/downloads> to obtain the accessory manual and learn detailed usage methods.

### SDC output

The power supply can be paired with an SDC adapter cable (sold separately) to meet the charging needs of different types of devices through the SDC interface.



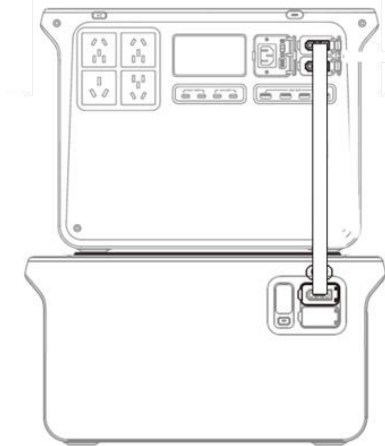
- |                                       |  |
|---------------------------------------|--|
| 1. M30 Series Fast Charging Cable     | 5. Matrice 4 Series Fast Charging Cable  |
| 2. Air 3 Series Fast Charging Cable   | 6. SDC to XT60 Power Cable               |
| 3. Mavic 3 Series Fast Charging Cable | 7. SDC to Car Charger Socket Power Cable |
| 4. Inspire 3 Fast Charging Cable      |  |



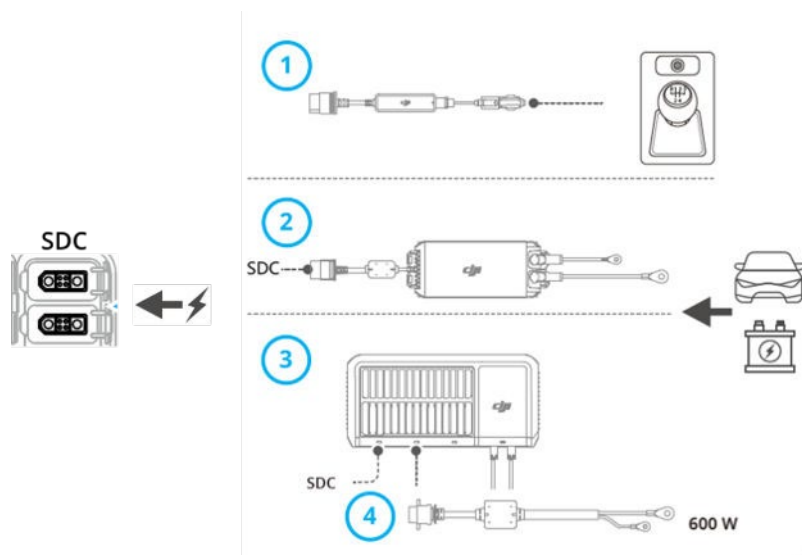
- Note to connect electrical devices within the specified range.
- Do not directly use the SDC to XT60 Power Cable to connect to lithium batteries with XT60 interfaces. Be sure to first connect to a balance charger that meets the corresponding specifications.

## Expand capacity

The product supports connection to DJI Power Expansion Battery 2000 for capacity expansion.



## Car Scenario



1. Car charger plug to SDC charging cable
2. 1 kW fast car charging
3. 1.8 kW solar/car fast charging
4. 1.8 kW fast charging 45 amp car charger connection cable

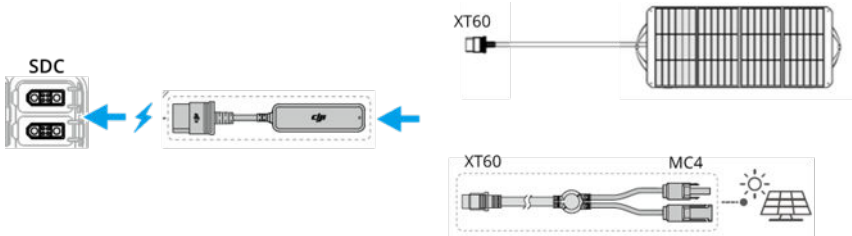


- Ensure the connected car power is within the specified range, otherwise it may cause abnormal operation or damage to the device.
- Ensure the charging cable is well connected to the car charger socket and charge after the car is started, otherwise it may damage the device.

## Solar Power Scenario

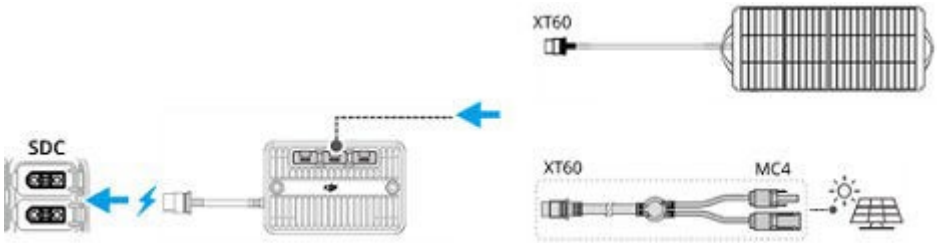
### Car charger plug to SDC charging cable

- \* Solar panels connected to the MC4 interface require an MC4 to XT60 solar adapter cable.

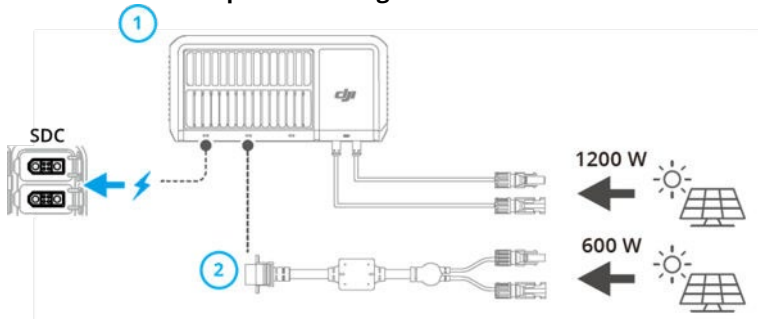


### Solar Panel Adapter Module (MPPT)

- \* Solar panels connected to the MC4 interface require an MC4 to XT60 solar adapter cable.



## 1.8 kW Solar/Car Super Fast Charger

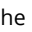


1. 1.8 kW solar/car fast charging
2. 1.8 kW Flash Charge XT90 to MC4 Adapter Cable

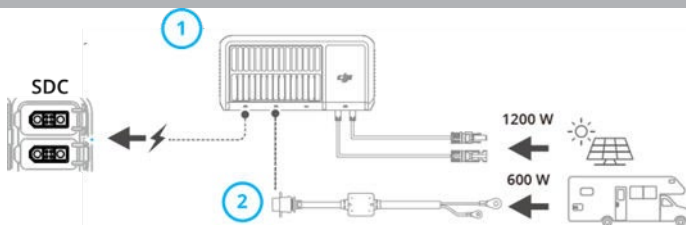


- It is recommended to use officially certified solar panels. Do not mix different types of solar panels, and ensure that the connected solar panels do not exceed the input specification limits of the interface to avoid damaging the equipment.
- A single solar panel adapter module (MPPT) can connect up to 3 solar panels in parallel, but does not support series connection of solar panels.
- The car charger plug to SDC charging cable supports connecting up to 1 solar panel for charging.



- When using multiple charging methods simultaneously, solar charging is prioritized by default. To adjust the charging method, you can set it through the DJI Home App: On the homepage, click  > Charging and Discharging Settings, enable the Energy Storage Backup Mode, and set the backup ratio. When the battery level is below the set backup ratio, charge simultaneously through solar and other methods. When the battery level is above the set backup ratio, charge only through solar.

## Solar Power + RV Scenario



1. 1.8 kW solar/car fast charging
2. 1.8 kW fast charging 45A car charger connection cable

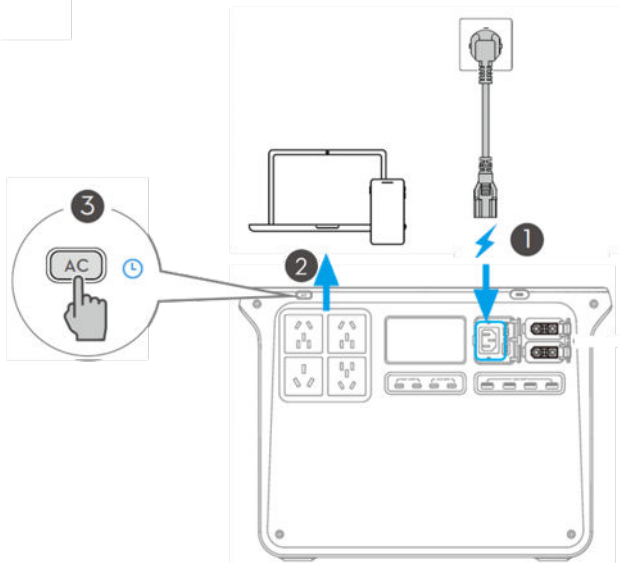


## 4 Uninterruptible Power Supply (UPS)

Connect the power supply to the mains, and connect the electrical equipment (such as a desktop computer) to the power supply. Short press the AC button, and when the screen displays, the UPS mode is activated.

When the mains power is normal, it charges the outdoor power supply and powers the electrical equipment simultaneously.

In the event of a sudden power outage, the power supply automatically switches to supply mode to ensure the normal operation of the electrical equipment.



- This product does not support 0 millisecond switching. Do not connect it to devices with high uninterrupted power supply requirements (such as medical equipment, servers storing important data, workstations, etc.), as this may cause the equipment to malfunction or data loss.
- This function is not supported in some regions. Please refer to local laws and regulations for details.
- Due to certain legal and regulatory restrictions, the actual output power of the power supply may decrease after enabling UPS mode.

## 5 Appendix

### Specification

Visit the following link to obtain the product's technical specifications:

<https://www.dji.com/power-2000/specs>

### Compatibility


Visit the following link to obtain information about compatible products:

<https://www.dji.com/power-2000/faq>

### Firmware Upgrade

#### Using the DJI Home App

After binding the device to the app, run the DJI Home App and follow the prompts in the DJI Home App to upgrade the firmware. An internet connection is required during the upgrade.

On the DJI Home App homepage, click  on the top right corner to open device settings, then click Firmware Upgrade > Update.

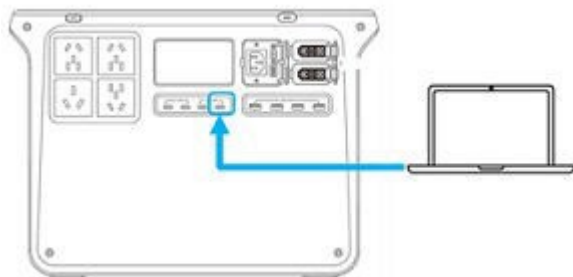


- Before upgrading, ensure the device is properly connected to the network and has sufficient battery power.
- If using accessories like a power pack or fast charging module, you can connect to an outdoor power source to upgrade the firmware together.

#### Using DJI Assistant 2 (Power Series)

Before upgrading, ensure the computer is properly connected to the network. Be sure to follow these steps to upgrade the firmware:

1. In the shutdown state, press and hold the AC button and the power button simultaneously until the USB-C icon on the screen flashes.
2. Connect the computer to the USB-C port at the power icon location.



3. Run the tuning software, select the corresponding product, and click firmware upgrade on the left side of the main interface.
4. Select and confirm the firmware version to be upgraded, carefully read the important notes on the software, and click upgrade. The tuning software will automatically download and transfer the firmware.
5. After the firmware transfer is complete, the device will automatically upgrade each module, and the display will show the upgrade progress. Please be patient. Once the upgrade is complete, the power will automatically restart.

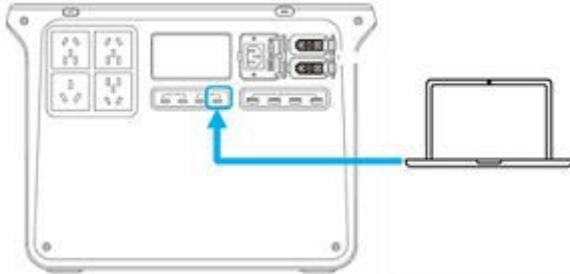
⚠ •During the upgrade process, do not turn off the product power or disconnect the USB data cable between the product and the computer.

- If the firmware upgrade fails and the screen displays UPGD FAIL, disconnect the AC power cable and USB-C cable, press and hold the power button for 5 seconds to turn off the device, then try upgrading again.

After turning off the device with the power button for a second, try upgrading again.

## Log Export

1. In the shutdown state, press and hold the AC button and the power button simultaneously until the USB-C icon on the screen flashes.
2. Connect the computer to the USB-C port at the power icon location.



3. Run the parameter adjustment software, click Log Export on the left side of the main interface > Export to Local, choose the log storage location, and wait for the export to complete.

## Trouble Shooting

If an error message appears on the screen, you can click the link or scan the QR code to learn more about the error message and its solutions. If you have any questions, please contact DJI Technical Support.



<https://s.dji.com/DJI-Power>

## Maintenance

1. For long-term storage, discharge the product's battery to about 60%. Storing with low battery can easily cause battery over-discharge.
2. Be sure to store this product at the specified storage environment temperature. The storage environment should be cool, ventilated, and dry, and avoid exposure to sunlight. Do not place this product in water or areas that may leak water.
3. Do not store the power supply for a long time after it is completely discharged to avoid the battery entering an over-discharge state, which can cause cell damage.
4. Recharge and discharge every 4 months or so: Discharge to 15%, turn off and let it sit for more than 2 hours, then charge to 100% using the normal mode to maintain the power supply.
5. If the power interface is dirty, clean it with a dry cloth. Do not use alcohol or other flammable agents for cleaning.

## Disposal

1. This product contains hazardous chemicals. Please follow local battery recycling and disposal laws and regulations to dispose of this product. Do not dispose of it in regular trash bins.
2. Ensure the product is completely discharged before placing it in the designated battery recycling bin.
3. If the product exhibits abnormal conditions such as over-discharge, swelling, dropping, water ingress, damage, or leakage, do not dispose of it directly in the battery recycling bin. Immediately stop using it and contact a professional battery recycling company for further handling.

WE ARE HERE FOR YOU



Contact

DJI SUPPORT

This manual is subject to  
change without prior notice.  
Check the latest version on the  
official DJI website



<https://www.dji.com/power-2000/downloads>

If you have any questions or suggestions regarding the manual, please contact us via the  
following email:

[DocSupport@dji.com](mailto:DocSupport@dji.com).

DJI is a trademark of DJI Innovations.

Copyright © 2025 DJI Innovations. All rights reserved.