

User Manual

Ver 1.0



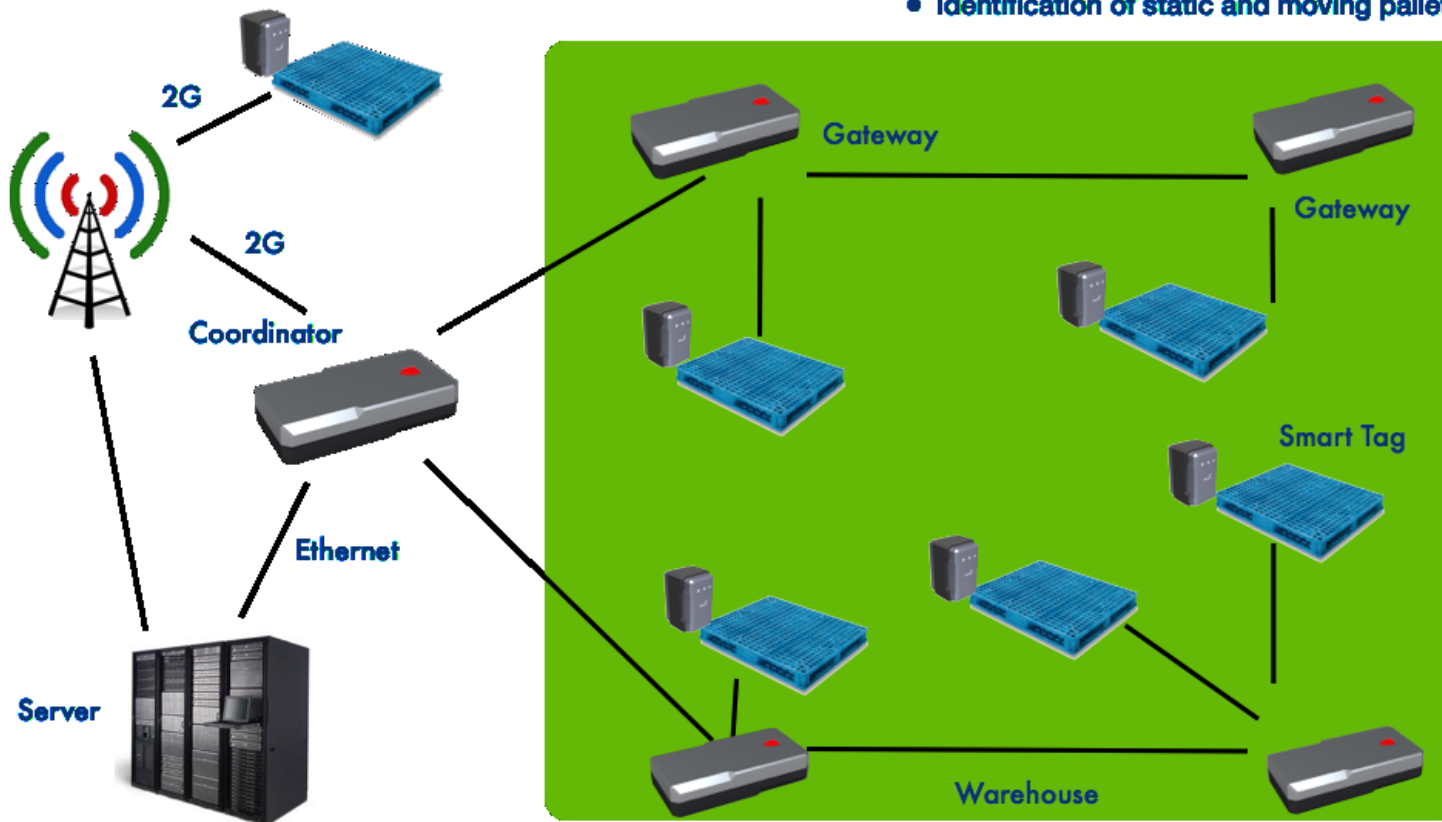
Overview

- Cellular 2G CDMA modem
- GPS receiver (optional)
- Enhanced IEEE 802.15.4 (ZigBee protocol)
- 16 bit application processor
- Motion sensor
- Temperature sensor
- Tamper proofing
- Battery level monitoring
- Industrial grade battery
- FOTA (Firmware-Over-The-Air) update
- Wide Temperature Range: -40°C ~ 85°C
- Nail penetration protected battery pack enclosure
- Max # pings: 3500
- Battery : 3 X 3600mA (Li/SOCI2 Type)
- Product Dimension : 53mm X 60mm X 76mm

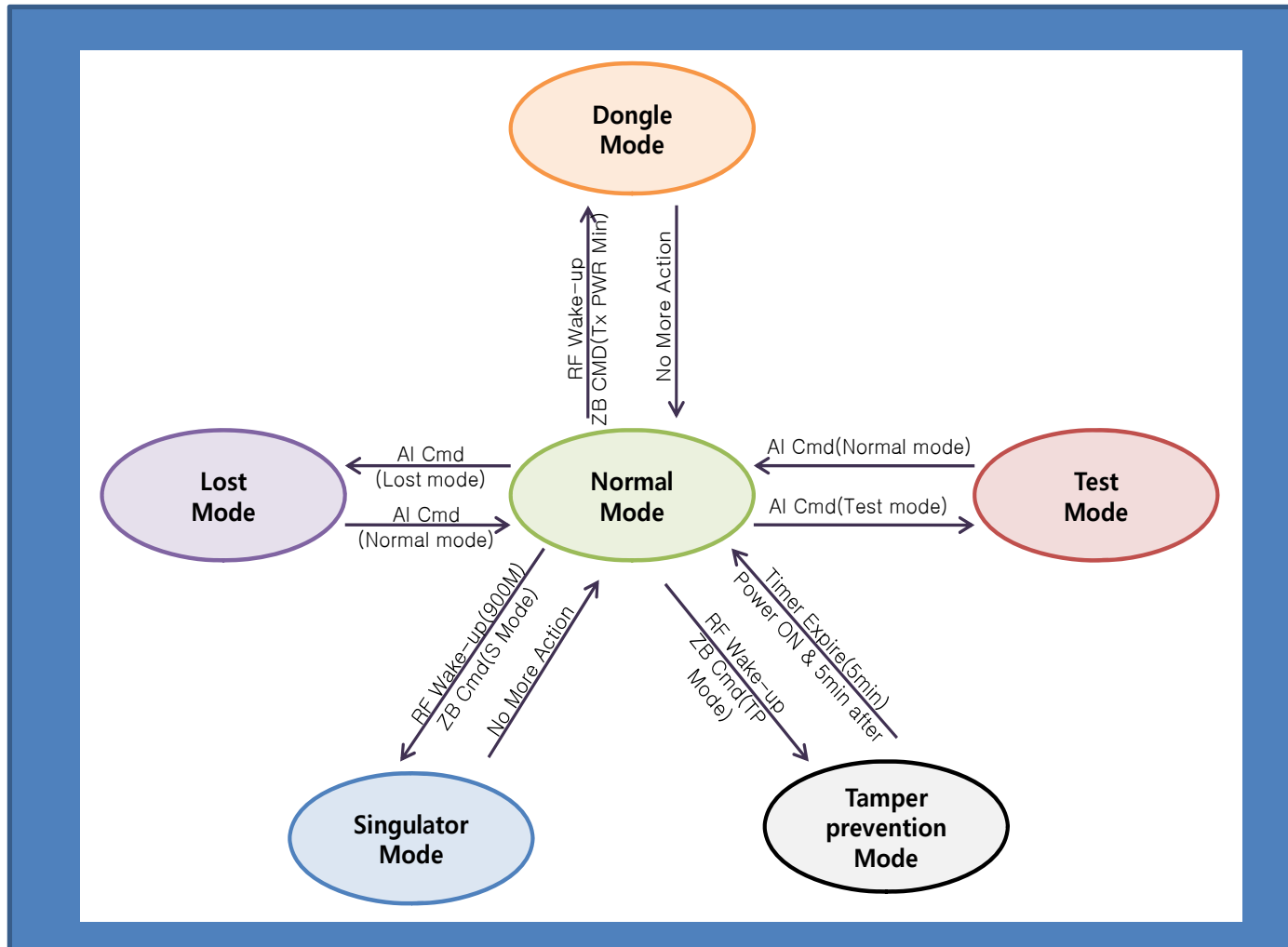


Configuration

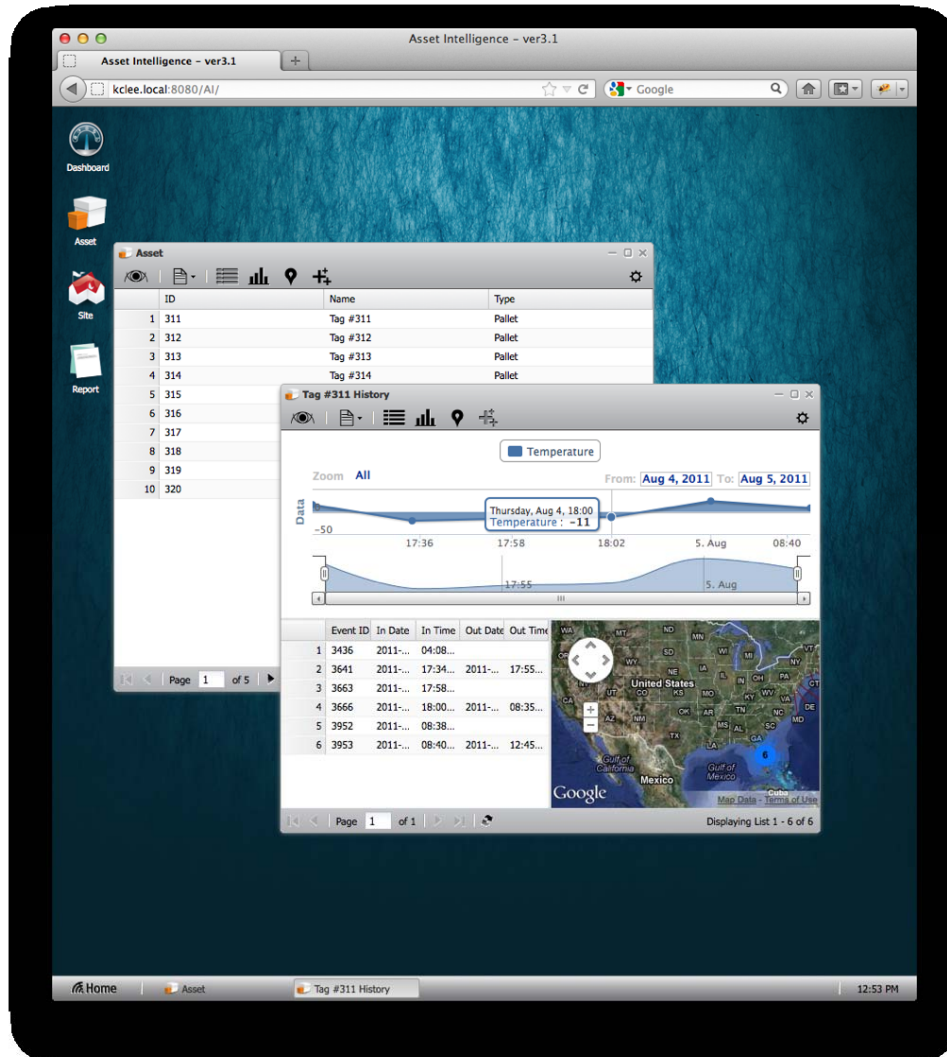
- Petari solution demonstrates
- Real-time asset tracking
 - 100% coverage for indoor and outdoor
 - Identification of static and moving pallet



Operating Mode



Monitoring S/W



Asset Intelligence (AI) is a SW provided by Petari to allow customers to track and analysis the assets in US national wide without additional infrastructure.

- ▶ CDMA network
- ▶ GPS supports
- ▶ All sensing data monitoring in real time and searchable history data

This device complies with Part 15 of the FCC Rules. Operation is subject to the following two conditions:

- (1) This device may not cause harmful interference. And
- (2) This device must accept any interference received, including interference that may cause undesired operation.

Caution

Any changes or modifications (including the antenna) made to this device that are not expressly approved by the manufacturer may void the user's authority to operate the equipment

To comply with FCC RF exposure compliance requirements, a separation distance of at least 20 cm must be maintained between the antenna of this device and all persons. This device must not be co-located or operation in conjunction with any other antenna or transmitter.

This equipment complies with FCC

PETARI INC.

Address : CTCC(Fusion Center) 401, Gajeongro 218, Yuseong-gu, Daejeon, Korea

Tel : +82-70-8768-8195