

**FCC Part 15.247/15.249  
Transmitter Certification**

**Composite Device**

**Test Report**

**FCC ID: SK9AMI-2**

**FCC Rule Part: 15.247/15.249**

**ACS Report Number: 06-0240-15C-DSS, 06-0240-15C-DXX**

Manufacturer: Itron Electricity Metering Inc.  
Trade Name: CENTRON Open Way  
Model(s): CVSOR

**Internal Photographs**



Figure 1: Assembled View

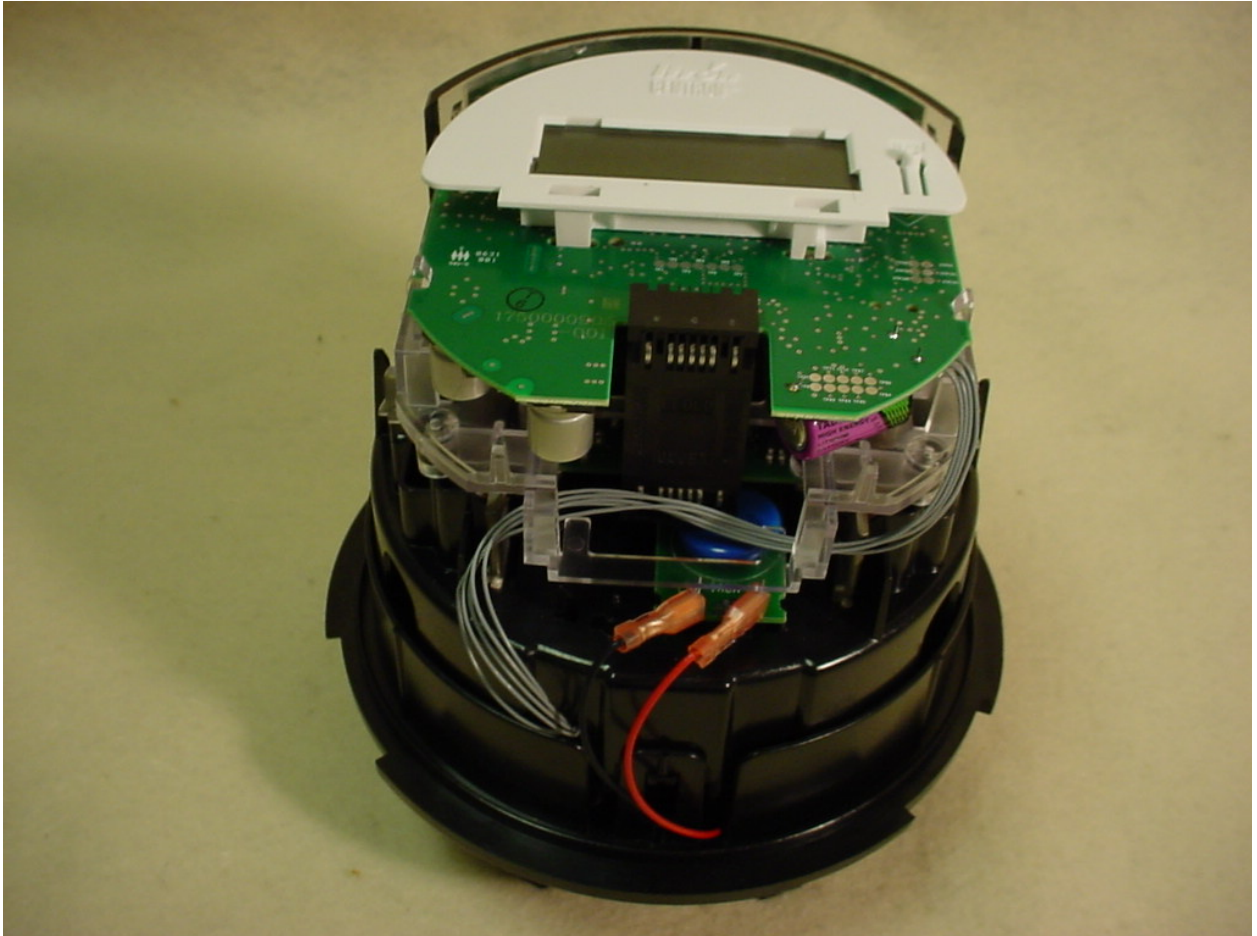


Figure 2: Internal – Assembled View

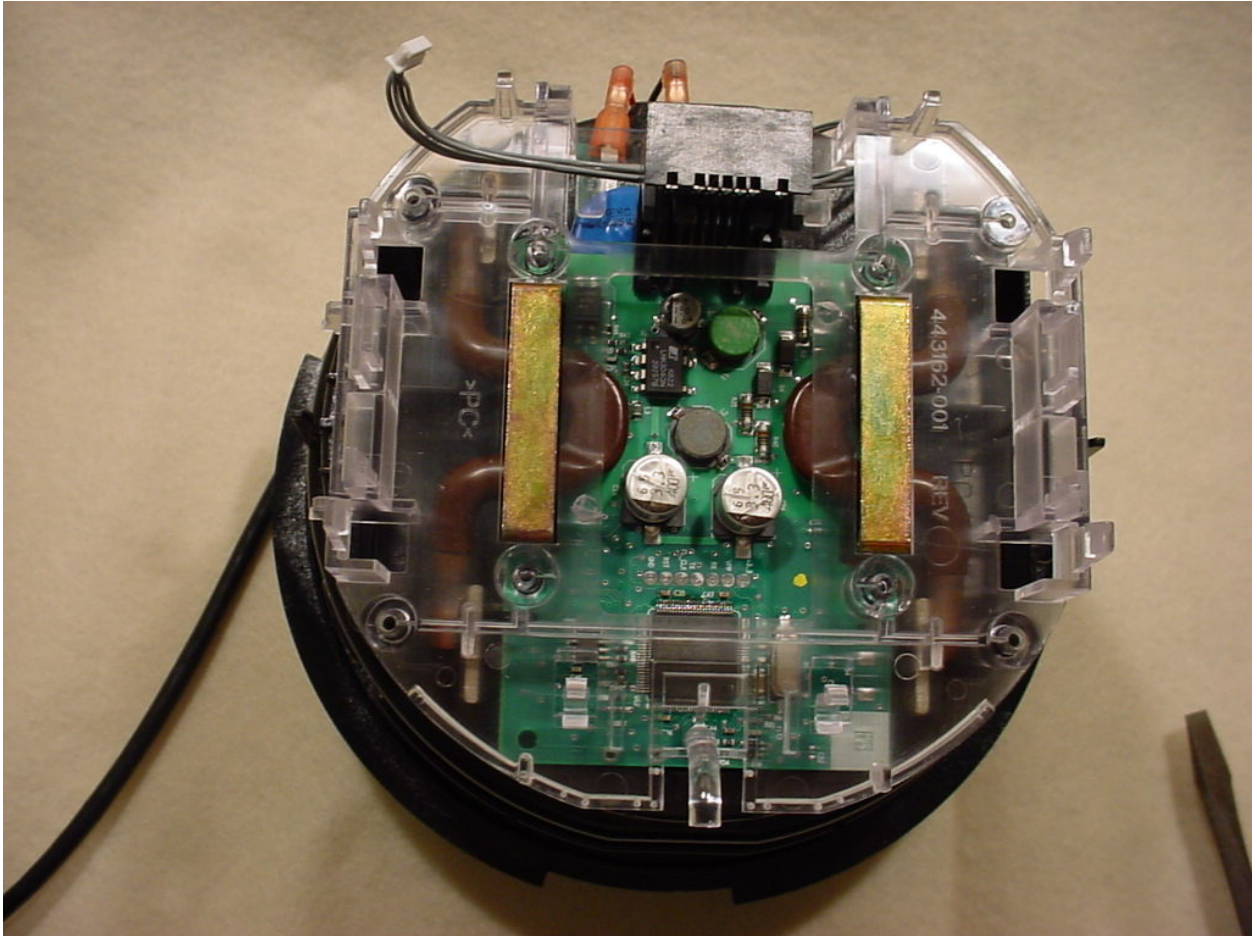


Figure 3: Internal – Metrology Section

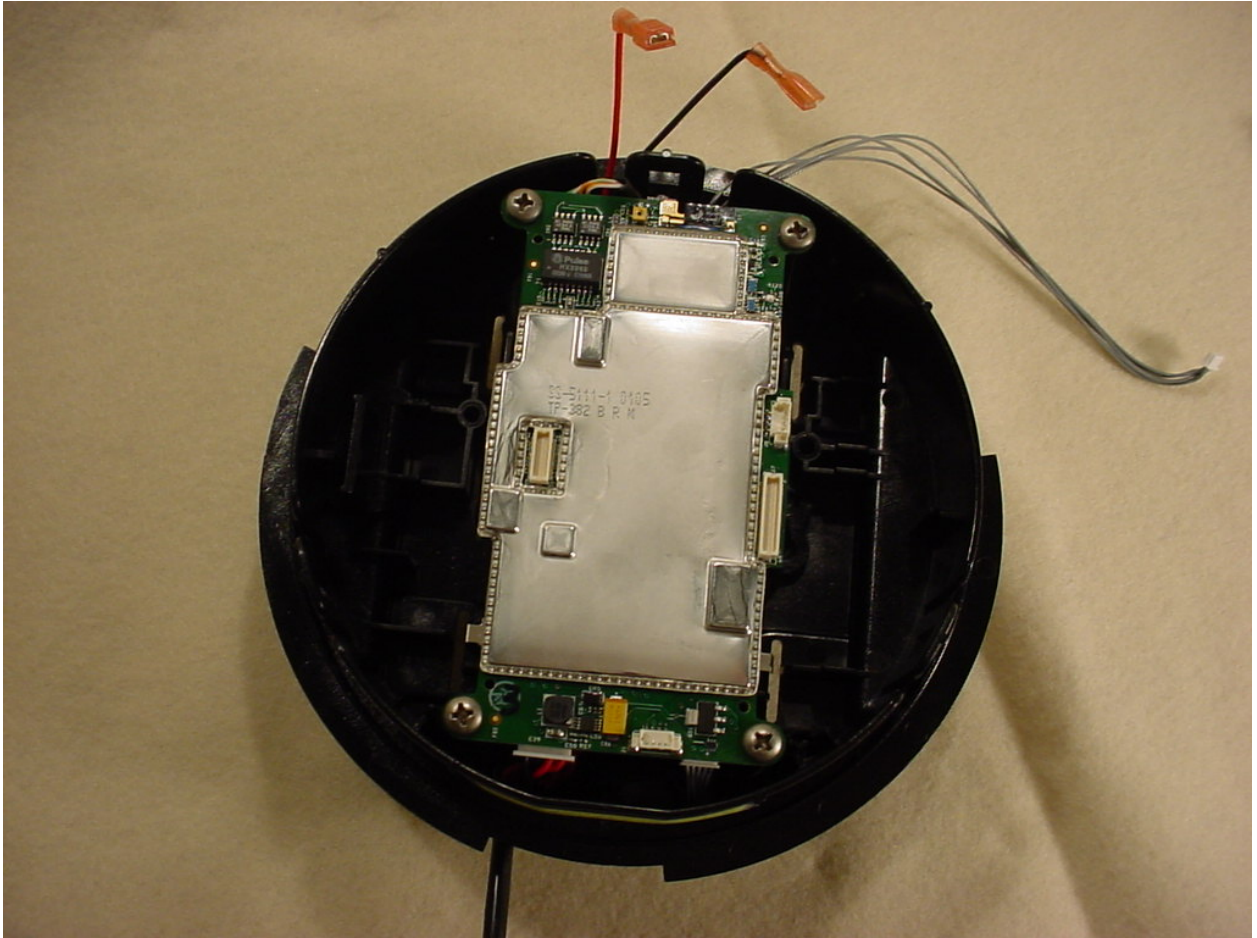


Figure 4: Internal – Cell Relay Core Board

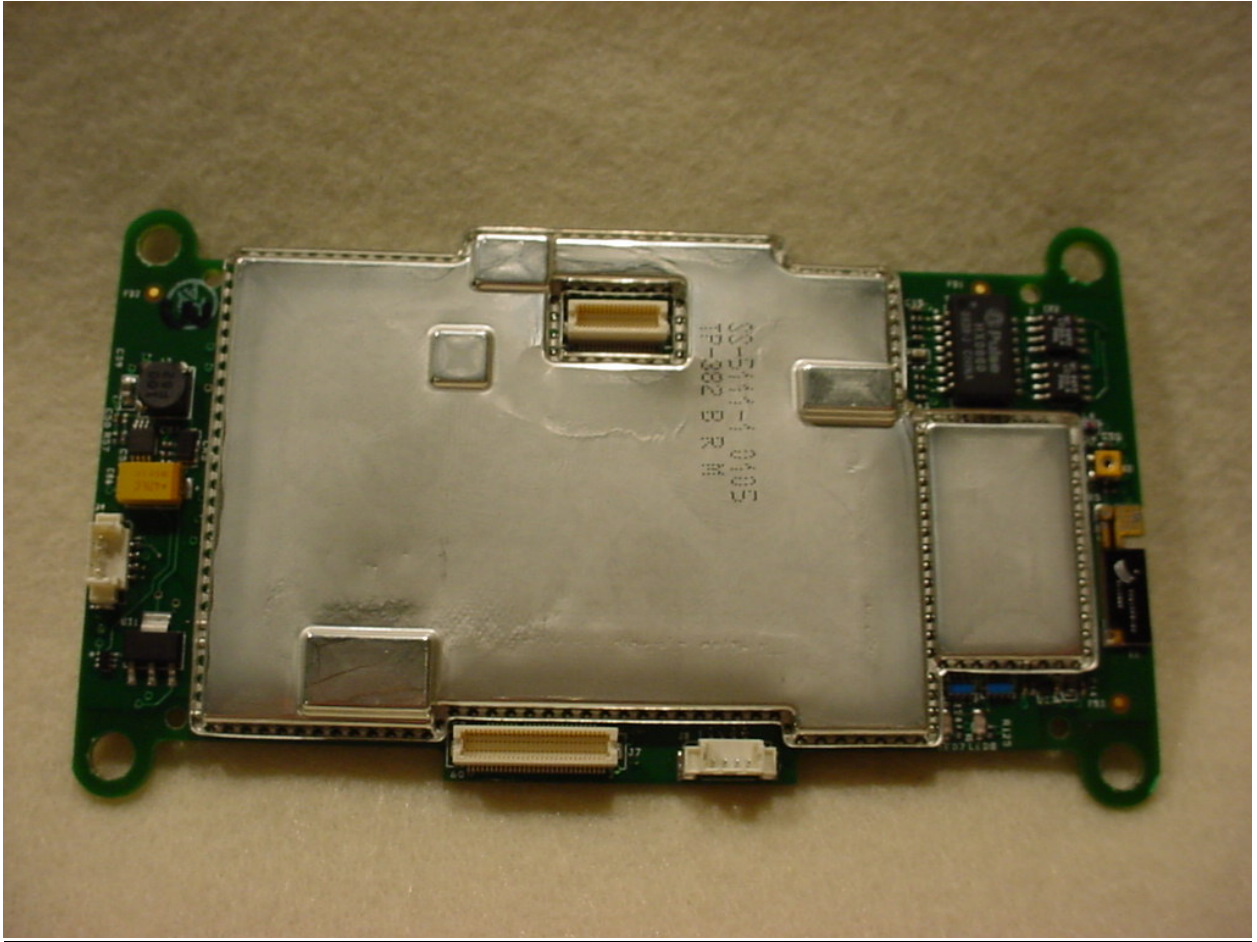


Figure 5: Internal – Cell Relay Core Board Front (Shielded)

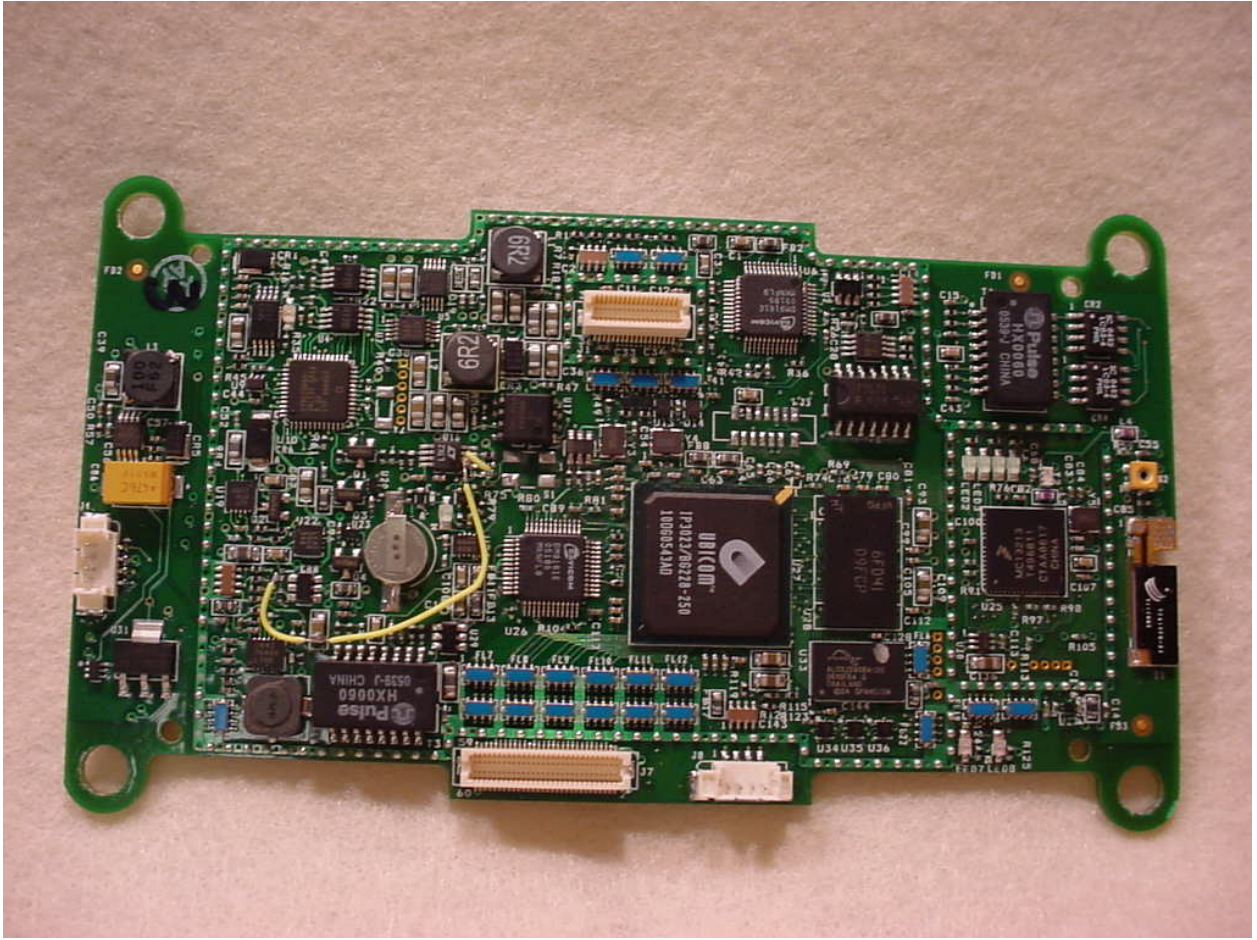


Figure 6: Internal – Cell Relay Core Board Front (No Shield)

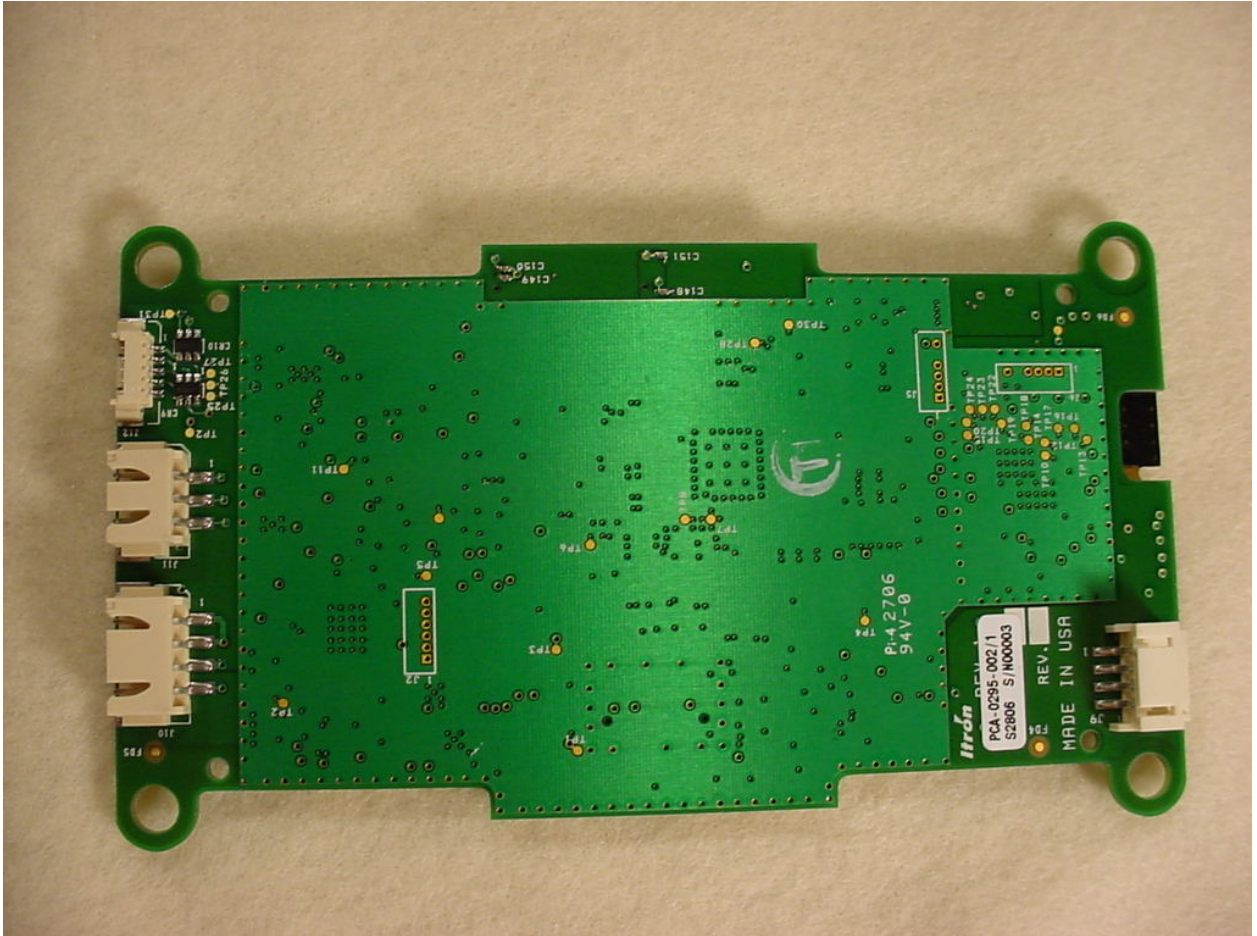


Figure 7: Internal – Cell Relay Core Board Back



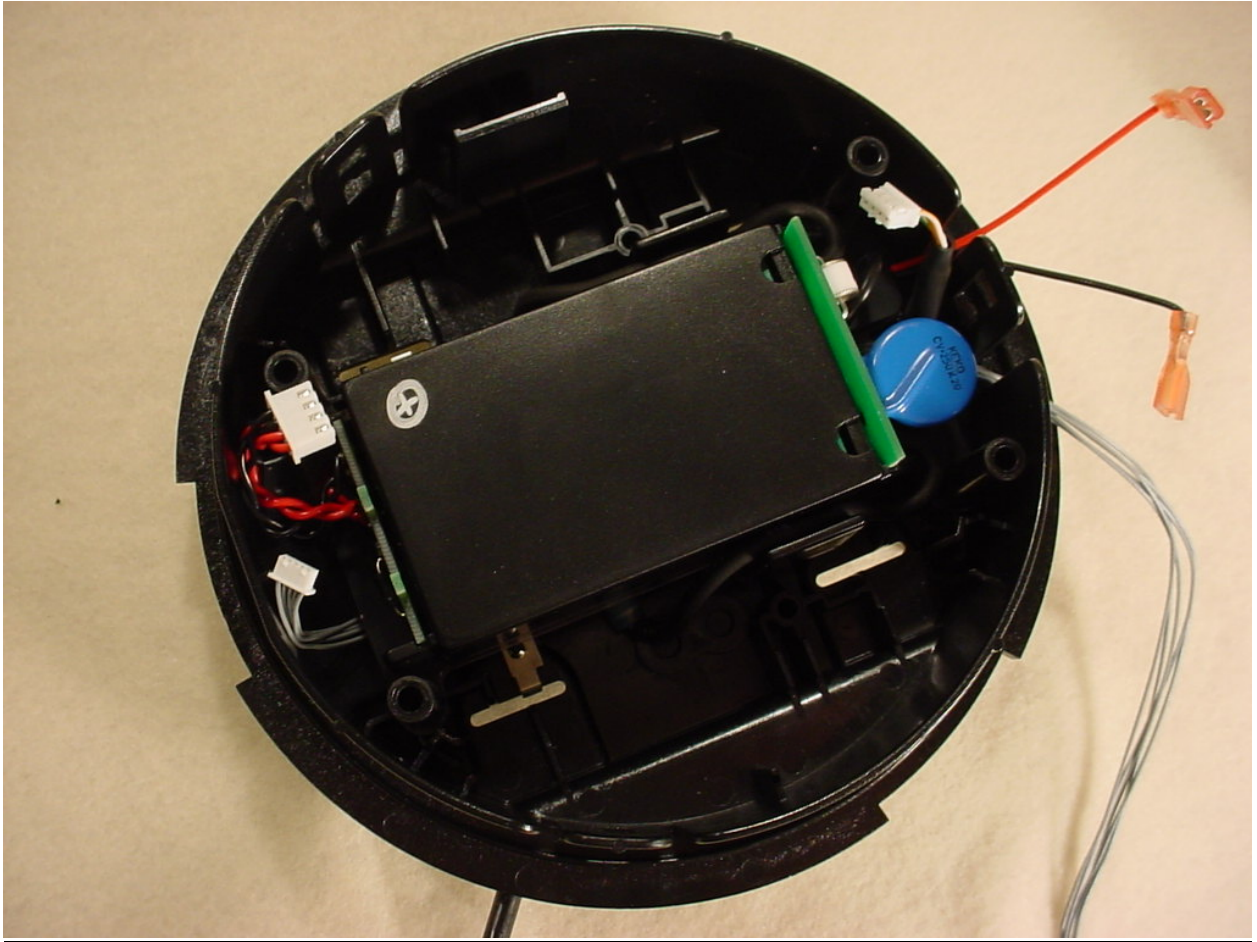


Figure 8: Internal – Power Supply Section

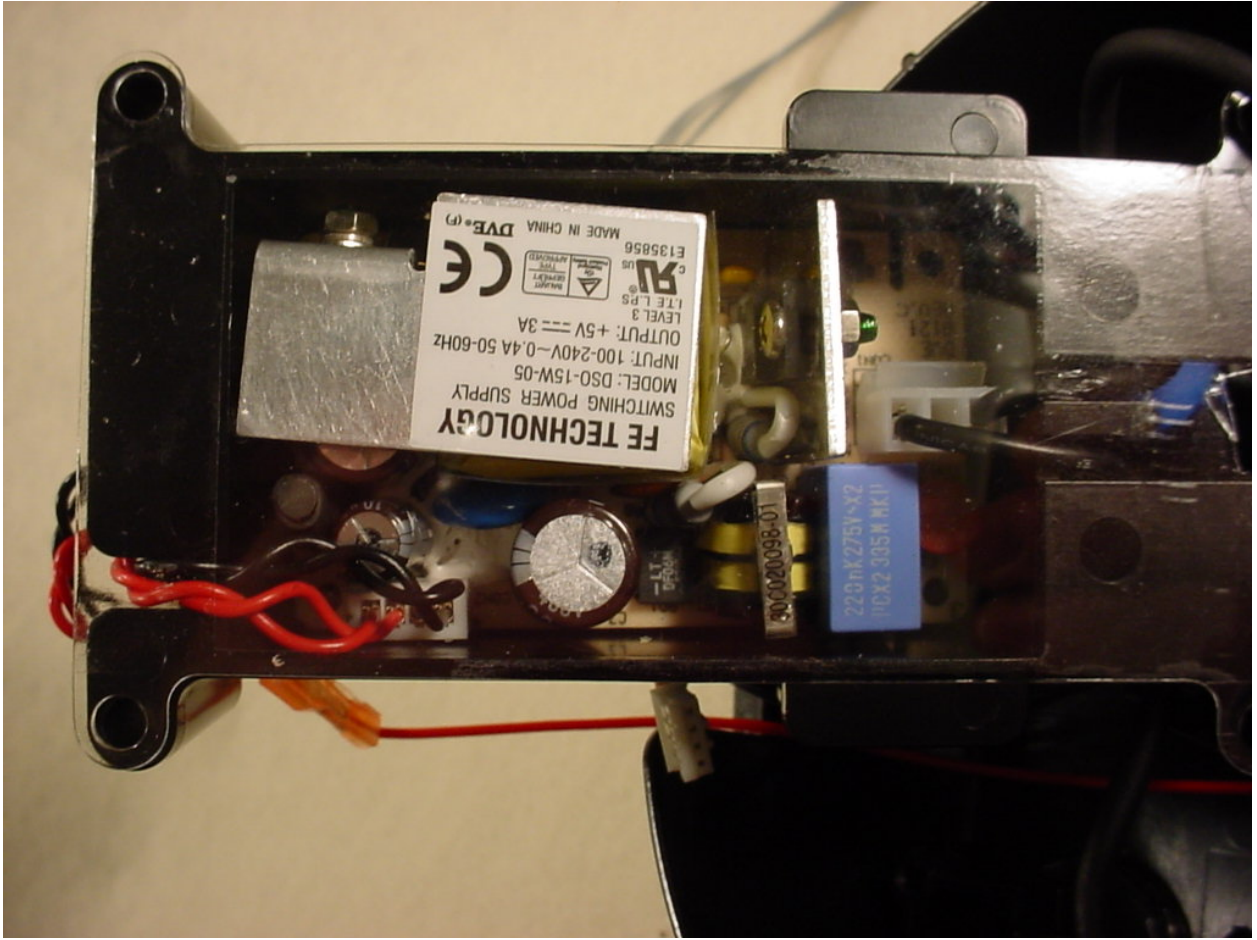


Figure 9: Internal – Power Supply Section

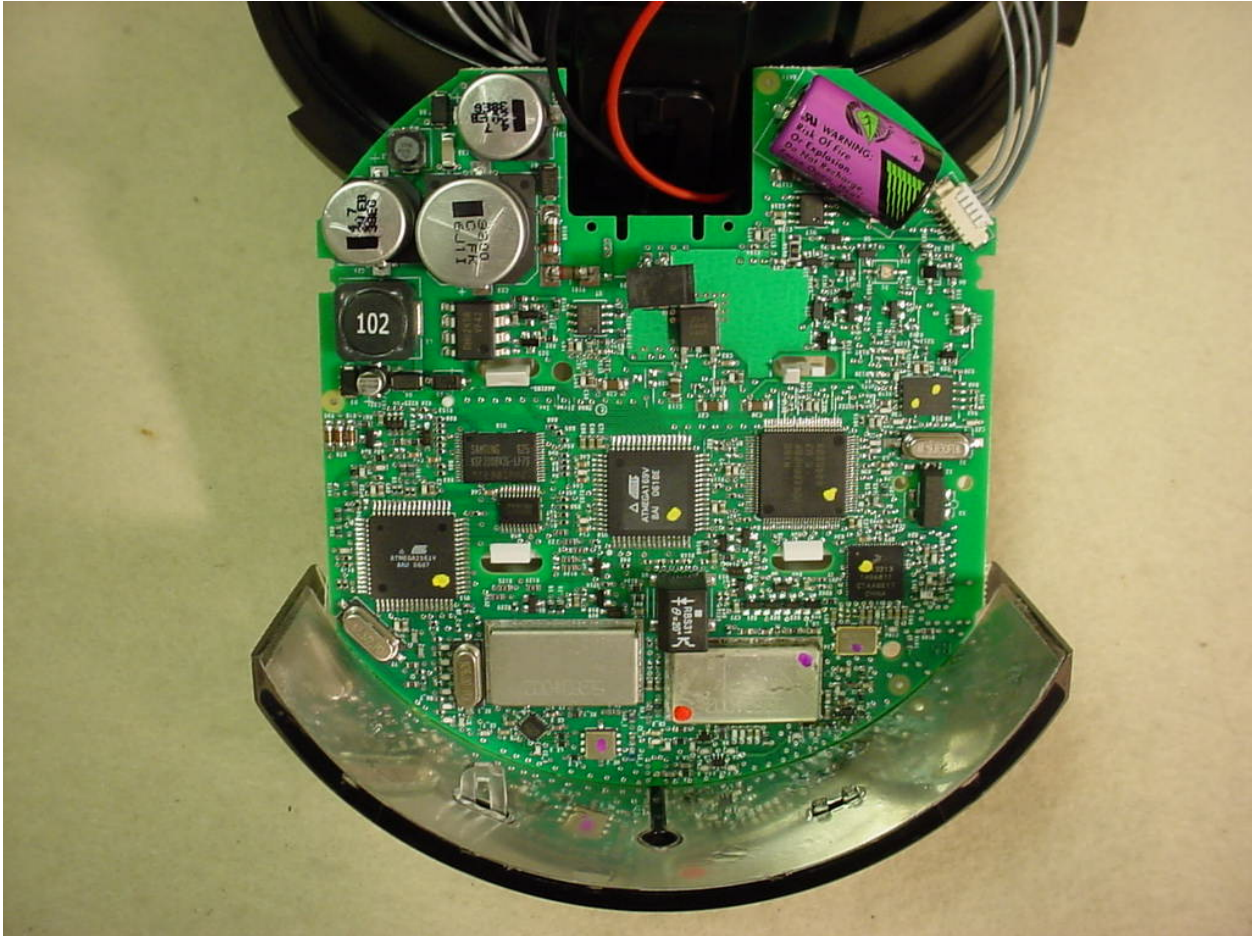


Figure 10: Internal – Register Board Top

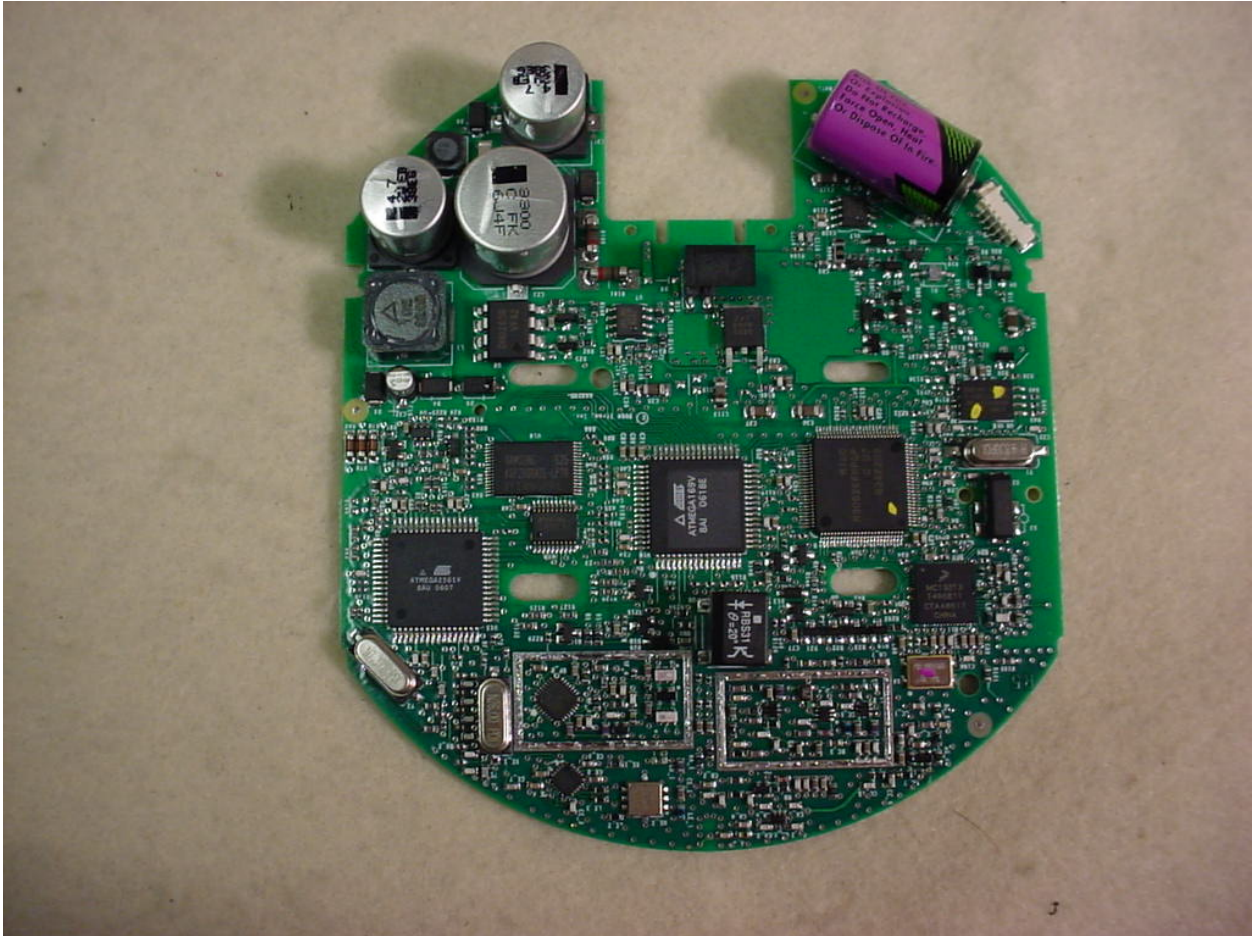


Figure 11: Internal – Register Board Top - No Shields/Antenna

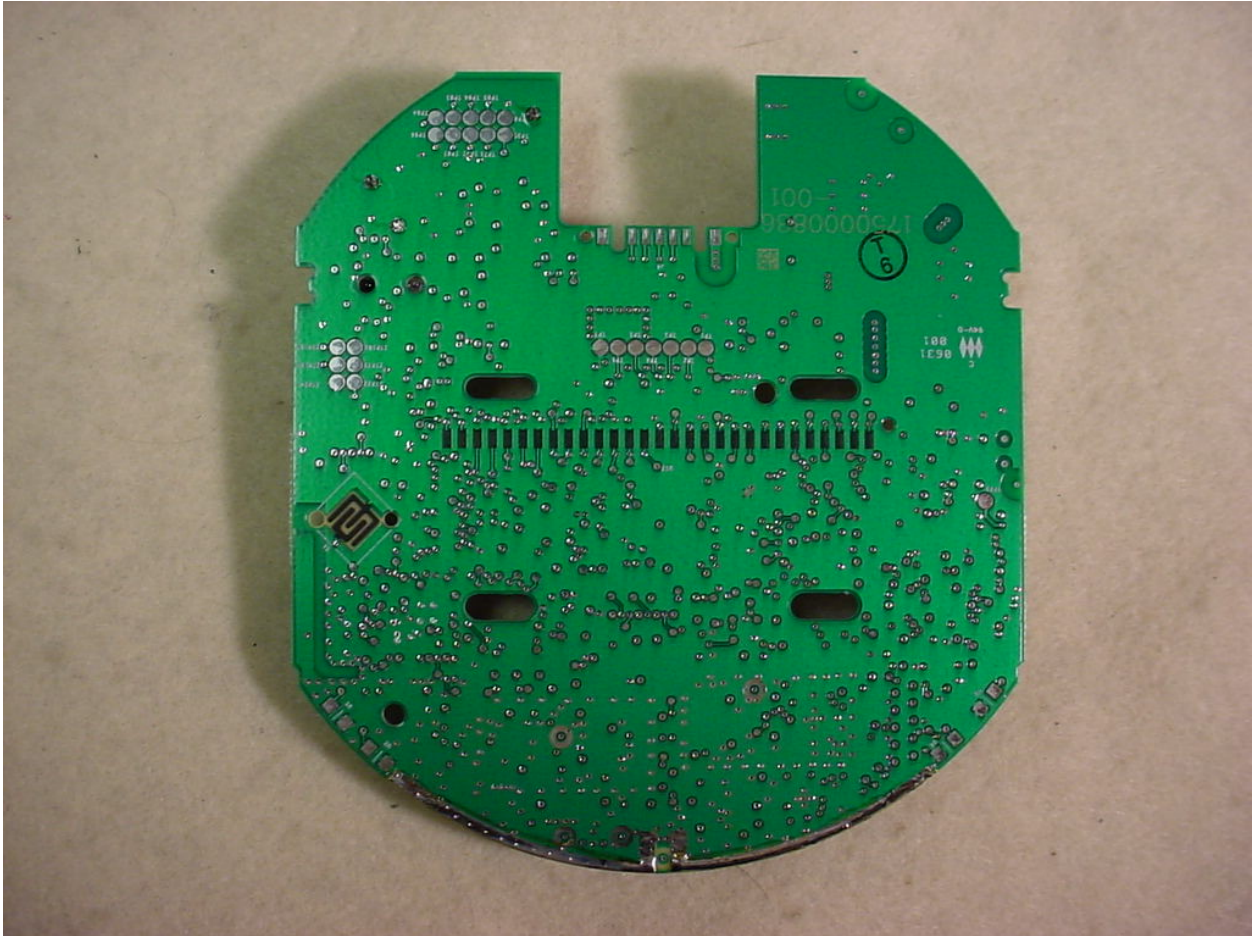


Figure 12: Internal – Register Board Bottom