

1. Contents

1. Warnings	2
2. Camera Features	3
3. Packed Contents and specification	3
4. Set Up the Camera	5
5. Installation	6
6. Software Overview	8
6-1 AlphaCam Viewer	8
6-2 Video Conference	11
6-3 WatchEye	12
7. Warranty	13

3. 순서

1. 주의사항	28
2. 제품 외관 및 주요 기능	29
3. 제품 구성과 사양	30
4. 설치 시 주의사항	31
5. 설치 방법	32
6. 소프트웨어 사용 방법	34
6-1 AlphaCam Viewer	34
6-2 Video Conference	37
6-3 WatchEye	38
7. 보증 안내 및 제품 보증서	39

2. 目次

1. 注意事項	15
2. 製品外観及び主要機能	16
3. 製品構成と仕様	17
4. 設置時の注意事項	18
5. 設置方法	19
6. ソフトウェア使用方法	
6-1 AlphaCam Viewer	21
6-2 Video Conference	24
6-3 WatchEye	25
7. 保証案内及び品質保証書	26

1 Warnings

Placement of the Camera

1. Don't place the camera near moisture and heat. Keep away from the direct rays of sun.
2. Keep away from the audio system such as a speaker or a magnet.
They may be the obstacles to the quality of screen and the transmission of a voice.
3. Avoid dust and water near the camera.
4. If the camera is placed on unsafe places and, as a result, falls on the ground or is impacted, it is likely to be damaged or out of order.

Management of Camera



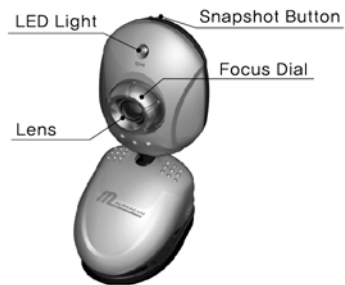
In order to protect the safety and the property of user's and to extend the life span of product, please be sure to read the manual before handling the product or before installation.

1. Disconnect the camera cable from USB port, if you are not to use for long period of time.
2. Do not spray water or benzene, thinner and alcohol on to camera.
3. Use dry and soft cloths to clean camera and lens.
4. Do not disassemble or repair the camera at random.
5. Do not spill coffee or beverages on to the camera.
6. Keep the camera beyond the reach of the children.
7. For troubleshooting , please call or ask to AlphaCam C/S center or store where you buy. From the AlphaCam software , click "Support" button.
For additional information , please visit us at www.alphacams.com

2 Camera Features



Model : AlphaCam PLUS



AlphaCam M

Snapshot Button : Button for capturing still images . Click the button to activate AMCAP
Focus Dial : Diaphragm for controlling lens focus
LED : Light ON when the camera begins running



Don't turn the Focus Dial excessively in either direction.
It is likely to be a cause of a breakdown.

3 Packed Contents and the specs

Hardware

1. AlphaCam PC Camera (USB Cable)
2. Software CD
3. User's Manual

Hardware Specifications

1. Sharp VGA 640×480 Image Resolution
2. 30 frames per second
3. Video Capture
4. Still Image Capture
5. E-mail Videos & Snapshots easily

Software

1. **AlphaCam Viewer** : Main software operating screen
2. **Video Conference** : With this video conferencing program, you can hold face-to-face conversations with friends and family. Collaborate with co-workers around the world using this industry standard video conferencing software.
3. **WatchEye** :Find out who's been snooping around your office while you're away from your computer. By activating MD, WatchEye will automatically snap pictures of intruder.

Minimum System Requirements

1. USB port
2. Windows 98, Windows 98 SE, Windows Me, Windows 2000 Professional, Windows 2000 Server, Windows XP
3. Pentium 400 MHz Processor , AMD Athlon™ Processor or Higher
4. 64 MB RAM
5. 200 MB free hard drive space
6. CD-ROM drive
7. 16-bit color display, 800×600 pixel resolution display
8. LAN card or 56K bps modem (for video conferencing)
9. Windows® compatible sound card, speakers and microphone
(full duplex sound card recommended)

4 Set Up the Camera



- ① Insert the SOFTWARE CD into the CD-ROM drive and install the program .
 - ② NEXT, connect the camera USB cable to the USB port of your computer. Do not connect before the installation.
-

If the camera has been connected ahead of software installation, cancel all your work and insert the SOFTWARE CD first.

1. After you pull the contents out of the box, make sure that the items written in the manual are the same as the contents
2. Insert the SOFTWARE CD into the CD-ROM drive. The installer starts automatically. (Window 95 system is not supported)
3. Software CD includes Driver, AlphaCam Viewer, and WatchEye .
4. After finish the software installation, connect camera cable to USB Port. Follow the prompt on the screen and click the [Finish] Button.
5. After the camera is installed automatically, AlphaCam Viewer Icon program appears on the screen. Then, the software installation is completed.

This manual is subject to change without notice for improvement in the function of the product and due to the modification of its options.

5 Installation (Under windows XP)

Driver & Software installation

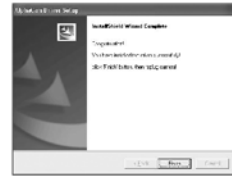
1. Insert the software CD into the CD-ROM drive.
AlphaCam Install Manager is automatically start.
If the program doesn't start automatically, please run 'autorun.exe' file in the software CD through Window Explorer.



2. During the installation process, click the button as shown on the wizard screen. Driver and Programs will be installed automatically.



Click 'Next' to continue.



Click "Finish" button.

3. After installing all the program, plug the Camera into USB port.

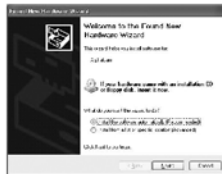
Hardware Installation

Plug the camera into USB port of PC. Then, "Found New Hardware" or "Searching" will be prompted at the right bottom tip of Windows.



After a minute, click "NEXT" or "Continue Anyway". Then, the Hardware is automatically installed.

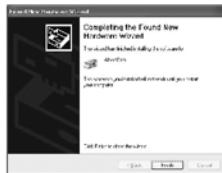
-
- ① This installation guides are for Windows XP
 - ② For Windows 98, Windows ME, Windows2000 Users, please refer to www.alphacams.com
-



1. "Found New Hardware Wizard" will be prompted. After choosing "Install the software automatically", click "Next" to continue.



2. "Found New Hardware Wizard" is installing the Camera in the computer . Click "Continue Anyway" to continue.



3. "Completing the Found New Hardware Wizard" will be prompted. Click "Finish" button, and the message "Rebooting" is prompted. Then, by pressing "Yes" to reboot, the installation of Camera is completed.

The installation is completed. Click AlphaCam Icon generated on DESKTOP screen, press snapshot button of the camera. Then, make sure the camera is properly installed.



6 Software Overview

6-1. AlphaCam Viewer

Click Alphacam Icon on Windows Desktop to use Alphacam Viewer

AlphaCam Viewer is a user – friendly software managing program that integrates all of AlphaCam's functions into one easy- to-use application.

AlphaCam Viewer has the function of displaying pictures put into the camera and also can capture still images and record videos.

1. Screen (320X240, 640X480, Full Screen)

2. Main Controller

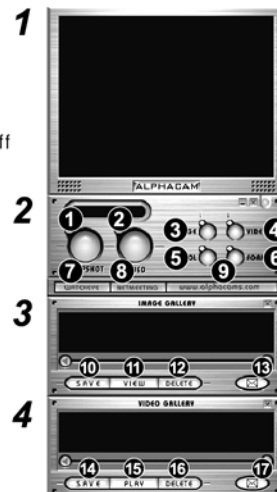
- | | |
|--|----------------------------|
| 1 Snapshot | 2 Recording Video On/Off |
| 3 Image Gallery box On/Off | 4 Video Gallery box On/Off |
| 5 Camera Control | 6 Screen Size Adjust |
| 7 WatchEye | 8 Netmeeting |
| 9 Visit us at : www.alphacams.com | |

3. Image Gallery

- | | |
|-----------|-----------|
| 10 save | 11 view |
| 12 delete | 13 E-mail |






4. Video Gallery

- | | |
|-----------|-----------|
| 14 save | 15 play |
| 16 delete | 17 E-mail |



1 SNAPSHOT: Click this snapshot button to capture still images.
 IMAGE : Click the IMAGE button, and IMAGE GALLERY box opens below.

2 VIDEO: Click this video button to record video.
 And to stop recording, click it again.
 VIDEOS : Click the video button, and VIDEO GALLERY box opens below.



- | | | | |
|---|------------------------------------|---|--------------------------------------|
|  | Save your image and video files. |  | Play the image files (Image Gallery) |
|  | Delete your image and video files. |  | Play the video files (Video Gallery) |
|  | E-mail your image and video files. | | |



5 CONTROL: Set up Camera Controls. Brightness, Contrast, Hue, etc. and you can get the best condition of the screen.

1. Vertical Flip : up-down alternating function
2. Mirror Flip : right-left alternating function
3. Backlight Comp : illuminating function
4. Exposure : Able to control after removing " ✓ " of "Auto Enable". Use this when too slow or when dark around it.
5. No Flicker Control : Power Frequency 60Hz (U.S.A, Canada, Korea..) : Power Frequency 50Hz (England, Japan, China..)



- 6** **FORMAT** : Screen output size and Frame rate control.
Set the video/snapshot size by choosing one of the three display sizes : 320x240, 640x480, Full size

- 13** **Send Snapshot Via E-mail**
1. Run AlphaCam Viewer, and press [Snapshot] button to capture the image.
 2. Press  button and save your image.
 3. Press  button and send your image.

- 17** **Send Video E-mail**
1. Run AlphaCam Viewer. Press the [Video] button and begin shooting.
 2. Press [Video] button again and stop recording.
 3. Press  button and save your video image.
 4. Press  button and send your image.

6-2. Video Conference – NetMeeting™

NetMeeting™ is a video conference program provided in setting up Windows. This is connected if you enter the Microsoft Server and click the party you want. Or this can be connected by entering the other person's IP address.



NetMeeting View



White Board

For more information regarding NetMeeting™, please visit the official Microsoft NetMeeting™ web site :
<http://www.microsoft.com/netmeeting/reskit>
<http://www.microsoft.com/netmeeting/demo>

6-3. WatchEye

WatchEye is a personal surveillance software program that monitors your home or office while you're away. If anyone enters your space, WatchEye secretly snap pictures of intruder and save them. WatchEye can keep a close eye on the vulnerable area by activating two cameras at once.

- 1) Camera 1, Camera 2: Check the power supply of each camera and activate the camera.
- 2) MD : Motion detector. You can adjust the detection sensitivity. As you move the bar to the left, the sensitivity of the motion detector will increase. So this camera can detect and capture even the tiniest change sensitively. By activating MD, you can capture still images. WatchEye begins to save snapshots automatically. Captured pictures will be stored in MD folder.



- 3) Still Image Capturing and Video Recording : You can take snapshots and video recording. Captured pictures can be checked in Image Gallery and Movie Gallery folders.
- 4) Scheduled Video Recording: WatchEye can record video automatically by setting the time and its frame in advance.



And this is not the special software for security. This is to give notice that legal responsibility is not taken for all Watcheye functions. For further Information regarding Watcheye, please visit web site www.alphacam.com

7 Warranty

Limited Warranty. Jun Telecom Inc. warrants that any hardware product accompanying this documentation shall be free from significant defects in material and workmanship for a period of one (1) year from the date of purchase, as evidenced by the original purchase receipt from the retail outlet. Jun Telecom Inc.'s limited warranty is nontransferable and is limited to the original purchaser.

How to Obtain Warranty Support. Before submitting a warranty claim, we recommend you visit the support section at www.alphacams.com for technical assistance. Valid warranty claims are generally processed through the point of purchase during the first one year of the warranty period. Valid warranty claims that are not processed through the point of purchase, any other warranty related questions, should be addressed directly to Jun Telecom Inc. The addresses and customer service telephone numbers for Jun Telecom can be found in the documentation accompanying your product and on the web at www.alphacams.com


Remedies. Jun Telecom Inc. entire liability and your exclusive remedy for any breach of warranty shall be, at Jun Telecom Inc.'s option, to: (a) repair or (2) replace the hardware, or (c) refund the price paid but limited to complete package and product without ruin. Provided and/or local warranty card. Any replacement hardware will be warranted for the remainder of the original warranty period. These remedies are void if failure of the hardware has resulted from accident, abuse, misapplication, or any unauthorized repair, modification or disassembly.

Disclaimer of Warranty. The warranties expressly set forth in this agreement replace all other warranties. Jun Telecom Inc. and its suppliers expressly disclaim all other warranties, including, but not limited to, the implied warranties of merchantability and fitness for a particular purpose and noninfringement of third-party rights with respect to the hardware, software, documentation and any other materials provided by Jun Telecom and/or its suppliers, and any warranties of non-interference or accuracy of informational content. No Jun Telecom Inc. dealer, agent, or employee is authorized to make any modification, extension, or addition to this warranty.

Limitation of Liability. Jun Telecom Inc. makes no warranty that the software provided with this camera hardware product will function without interruptions of, or otherwise be free of anomalies, errors or "bugs". In no event will Jun Telecom Inc. or its suppliers be liable for any costs of procurement of substitute products or services, lost profits, loss of information of data, or any other special, indirect, consequential, or incidental damages arising in any way out of the sale of, use of, or inability to use any Jun Telecom product or service, even if Jun Telecom has been advised of the possibility of such damages. In no case shall Jun Telecom's and its supplier's total liability exceed the actual money paid for the Jun Telecom product or service giving rise to the liability.

AlphaCam is intended to be used in a lawful manner. Certain uses of digital PC camera products may be prohibited by local laws in some countries or states, such as the surreptitious recording of audio/or video communications for certain purposes. If you have any question about whether a proposed use of your product is lawful, you should consult a local legal authority before proceeding.

Jun Telecom Inc. All rights reserved. AlphaCam, The AlphaTech logo, and other Jun Telecom marks are owned by Jun Telecom Inc. and may be registered. Microsoft and Microsoft Netmeeting are copyrights/trademarks owned by Microsoft Corporation. All other names and brands are the property of their respective owners.

Product Name		Customer Service Center 2F, 10-1 Jungro B/D, Samseong-dong, Gangnam-gu, Seoul, Korea TEL : (82) 2-543-9690 (82) 2-543-6474 (C/S) Fax : (82) 2-545-9290 URL : www.alphacams.com  Alpha Tech <small>Worldwide Video Solutions</small>
Model Name		
Model Name	mm / dd / yy	
Serial No.		
Purchase Place	TEL	
Warranty Period	1 Year after the date of purchase	

FCC Information

This device complies with Part 15 of the FCC Rules. Operation is subject to the following two conditions:

- (1) This Device may not cause harmful interface, and
- (2) This device must accept any interference received, including interference that may cause undesired operation.

Note: This equipment has been tested and found to comply with the limits for CLASS B digital device, pursuant to Part 15 of FCC Rules. These limits are designed to provide reasonable protection against harmful interference when the equipment is operated in a commercial environment. This equipment generates, uses and can radiate radio frequency energy and, if not installed and used in accordance with the instructions, may cause harmful interference to radio communications. However, there is no guarantee that interference will not occur in a particular installation. If this equipment does cause harmful interference to radio or television reception, which can be determined by turning the equipment off and on, the user is encouraged to try correct the interference by one or more of the following measures:

- 1.1. Reorient or relocate the receiving antenna.
- 1.2. Increase the separation between the equipment and receiver.
- 1.3. Connect the equipment into an outlet on a circuit different from that to which receiver is connected.
- 1.4. Consult the dealer or experienced radio/TV technician for help.

WARNING

Changes or modifications not expressly approved by the manufacturer could void the user's authority to operate the equipment.