

SAR Plots

- Verification Plots
- SAR Test Plots

DT&C Co., Ltd.

DUT: Dipole 2450 MHz; Type: D2450V2; Serial: D2450V2 - SN:726

Communication System: UID 0, CW (0); Frequency: 2450 MHz; Duty Cycle: 1:1
Medium parameters used: $f = 2450$ MHz; $\sigma = 1.85$ S/m; $\epsilon_r = 39.993$; $\rho = 1000$ kg/m³

Phantom section: Flat Section

DASY5 Configuration:

Probe: EX3DV4 - SN3916; ConvF(7.68, 7.68, 7.68); Calibrated: 2017-04-28; Electronics: DAE4 Sn1391
Sensor-Surface: 2mm (Mechanical Surface Detection)
Phantom: Twin-SAM V5.0 ; Type: QD 000 P40 CD; Serial: 1679
Measurement SW: DASY52, Version 52.8 (8); SEMCAD X Version 14.6.10 (7331)

Test Date: 2018-02-07; Ambient Temp: 21.4; Tissue Temp: 21.7

2450 MHz System Verification

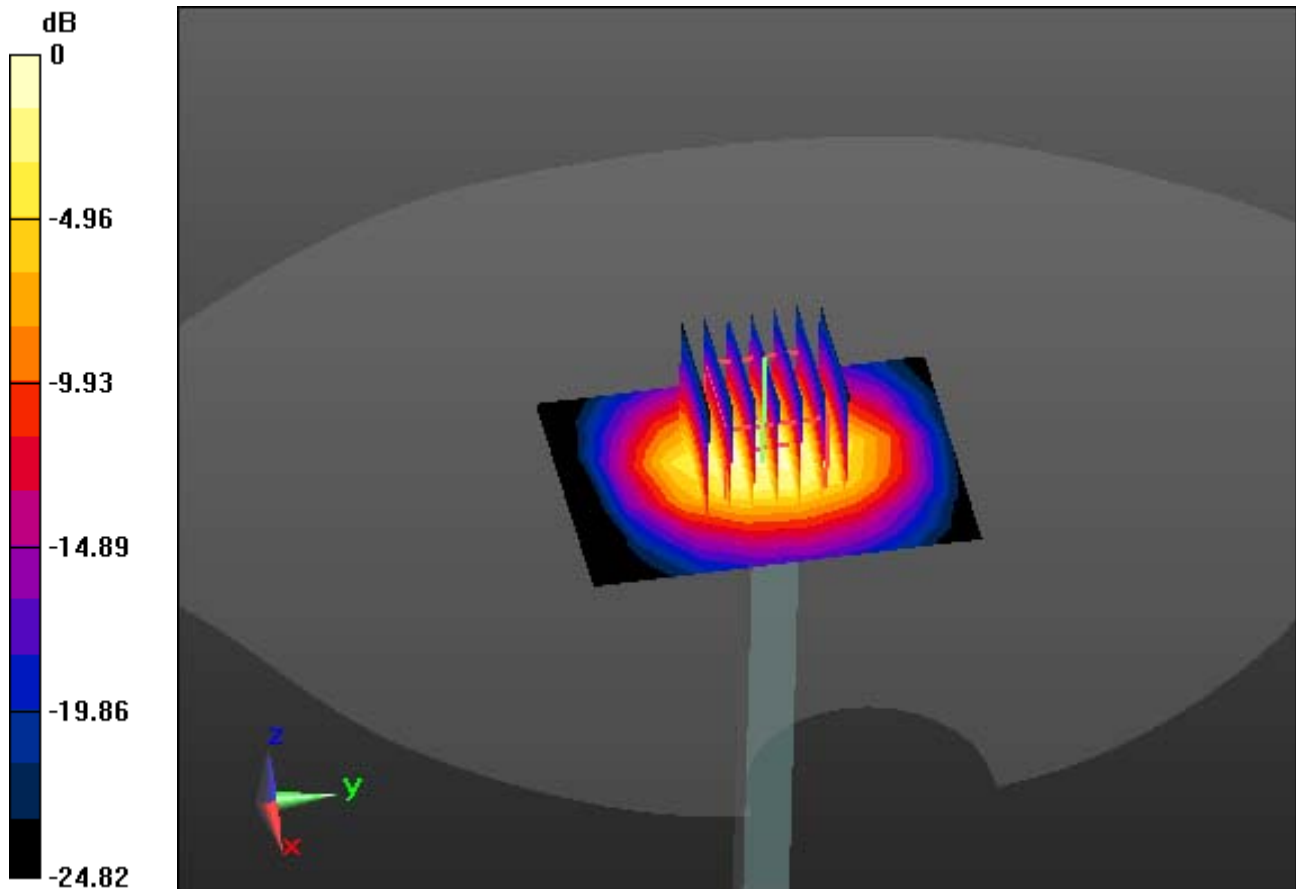
Area Scan (6x8x1): Measurement grid: dx=12mm, dy=12mm

Zoom Scan (7x7x7)/Cube 0: Measurement grid: dx=5mm, dy=5mm, dz=5mm

Power Drift = 0.09 dB

Peak SAR (extrapolated) = 11.96 W/kg

SAR(1 g) = 5.31 W/kg; SAR(10 g) = 2.35 W/kg



0 dB = 8.53 W/kg

DT&C Co., Ltd.

DUT: SP55; Type: Headset

Communication System: UID 0, Bluetooth (0); Frequency: 2441 MHz; Duty Cycle: 1:1.3

Medium parameters used: $f = 2441$ MHz; $\sigma = 1.841$ S/m; $\epsilon_r = 40.027$; $\rho = 1000$ kg/m³

Phantom section: Flat Section

DASY5 Configuration:

Probe: EX3DV4 - SN3916; ConvF(7.68, 7.68, 7.68); Calibrated: 2017-04-28; Electronics: DAE4 Sn1391

Sensor-Surface: 2mm (Mechanical Surface Detection)

Phantom: Twin-SAM V5.0 ; Type: QD 000 P40 CD; Serial: 1679

Measurement SW: DASY52, Version 52.8 (8); SEMCAD X Version 14.6.10 (7331)

Test Date: 2018-02-07; Ambient Temp: 21.4; Tissue Temp: 21.7

1.5 cm space from Body, Rear, Bluetooth 1 Mbps Ch. 39 Ant. Internal

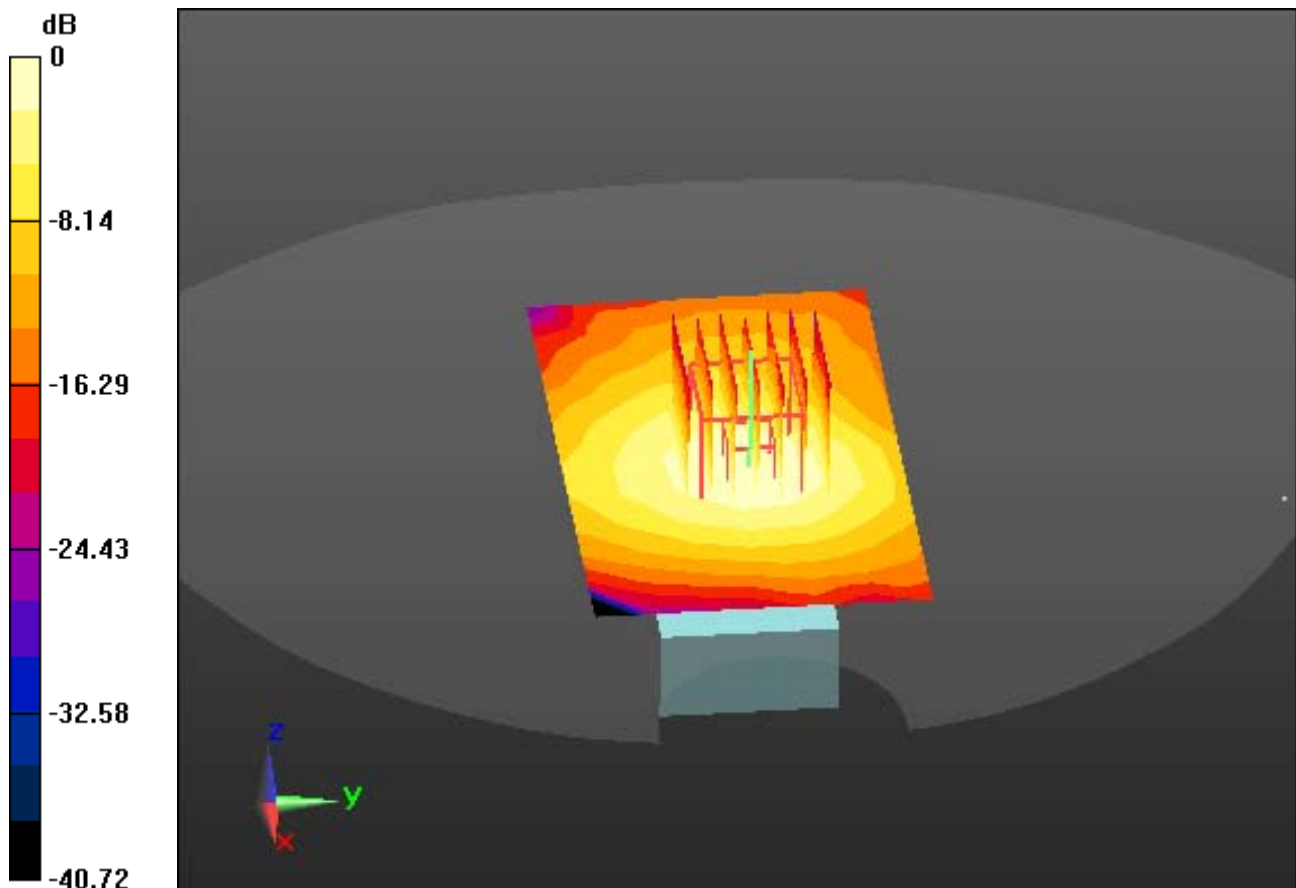
Area Scan (11x7x1): Measurement grid: dx=12mm, dy=12mm

Zoom Scan (7x7x7)/Cube 0: Measurement grid: dx=5mm, dy=5mm, dz=5mm

Power Drift = 0.00 dB

Peak SAR (extrapolated) = 0.173 W/kg

SAR(1 g) = 0.090 W/kg; SAR(10 g) = 0.048 W/kg



0 dB = 0.129 W/kg