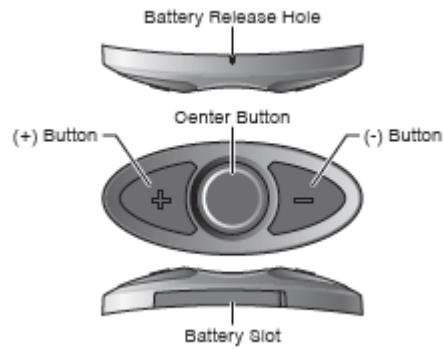


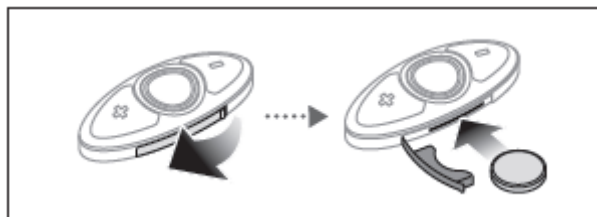
RC3 (Three Button Remote Control)

User Guide (English)

1. Product Components



2. Getting Started

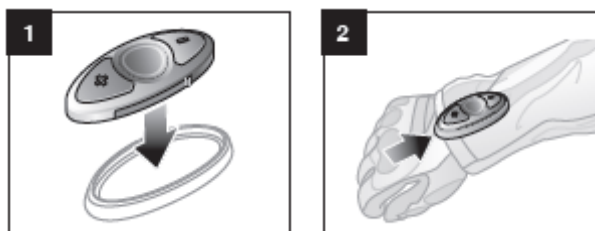


To begin using the RC3, take off the plastic cover in the battery slot. When closing the battery slot, insert both ends of the rubber first. To remove the battery, insert a paper clip through the Battery Release Hole.

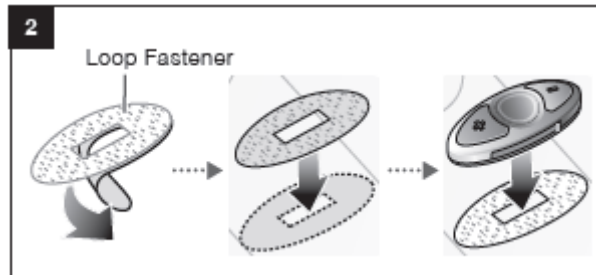
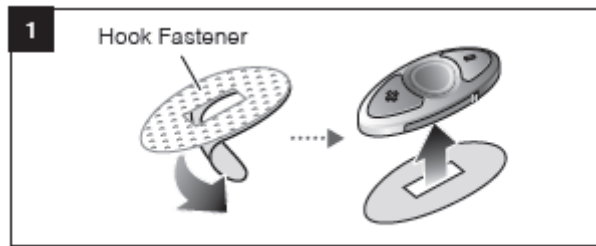
3. Installation

There are three ways of installing the RC3.

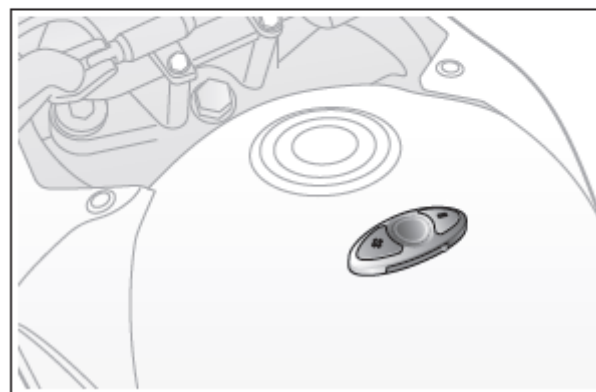
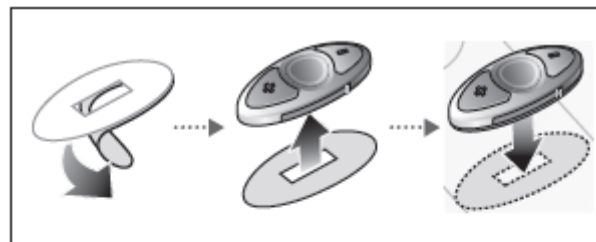
Using the Clip



Using the Hook and Loop Fasteners



Using the Adhesive Tape



4. Power On/Off

Tap the Center Button once to power on the RC3.

Power On

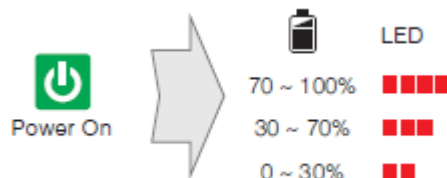


Press the (+) Button and the Center Button for 1 second to put RC3 in Deep Sleep.



5. Battery Check

When you power on the device check the number of red LEDs to check the level of the remaining battery.



6. Bluetooth Pairing

To pair the RC3 with a Sena Bluetooth headset, press the (+) Button for 8 seconds. Enter Remote Control Pairing mode on your headset, and the two will be paired shortly.

- You can control the headset using the RC3 only after you pair them together.
- The RC3 supports Sena headsets with Bluetooth 4.1.

7. Factory Reset

To return the RC3 into factory default settings, press the (+) Button, Center Button, and the (-) Button for 1 second.



8. Headset Control

To control your headset using the RC3, please refer to the Quick Reference Guide for button

operations on functions such as phone, music, and intercom.

This device complies with part 15 of the FCC Rules. Operation is subject to the following two conditions: (1) This device may not cause harmful interference, and (2) this device must accept any interference received, including interference that may cause undesired operation.

This equipment has been tested and found to comply with the limits for a Class B digital device, pursuant to part 15 of the FCC Rules. These limits are designed to provide reasonable protection against harmful interference in a residential installation. This equipment generates, uses and can radiate radio frequency energy and, if not installed and used in accordance with the instructions, may cause harmful interference to radio communications. However, there is no guarantee that interference will not occur in a particular installation. If this equipment does cause harmful interference to radio or television reception, which can be determined by turning the equipment off and on, the user is encouraged to try to correct the interference by one or more of the following measures:

- Reorient or relocate the receiving antenna.
- Increase the separation between the equipment and receiver.
- Connect the equipment into an outlet on a circuit different from that to which the receiver is connected.
- Consult the dealer or an experienced radio/TV technician for help.

Changes or modifications not expressly approved by the party responsible for compliance could void the user's authority to operate the equipment.

RF Exposure Statement

This equipment complies with FCC radiation exposure limits set forth for an uncontrolled environment. End users must follow the specific operating instructions for satisfying RF exposure compliance. The antenna used for this transmitter must not transmit simultaneously with any other antenna or transmitter, except in accordance with FCC multi-transmitter product procedures.

When equipped, the distance between antenna and one's limb is 0mm.