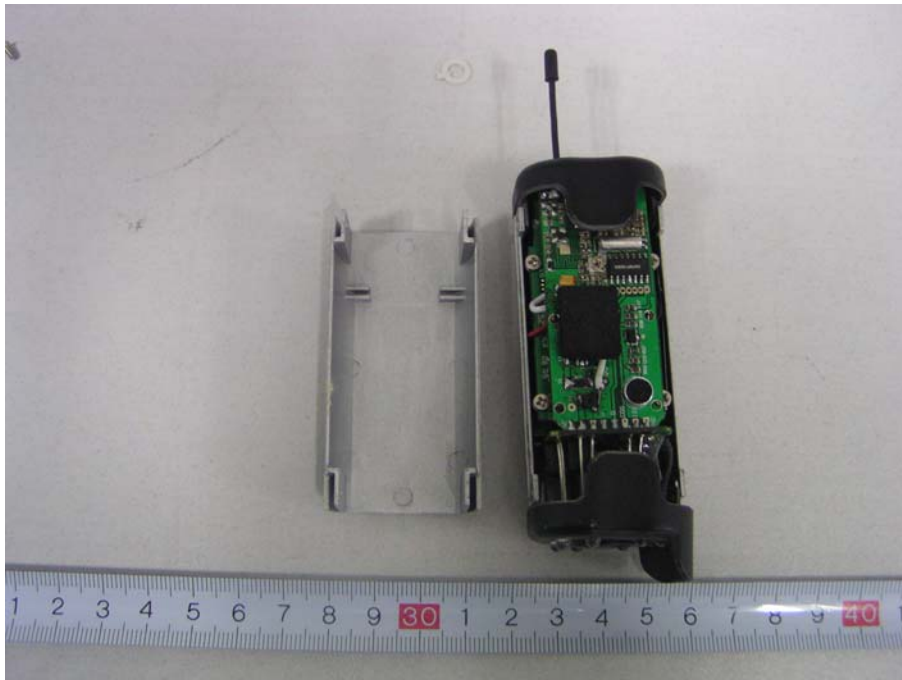
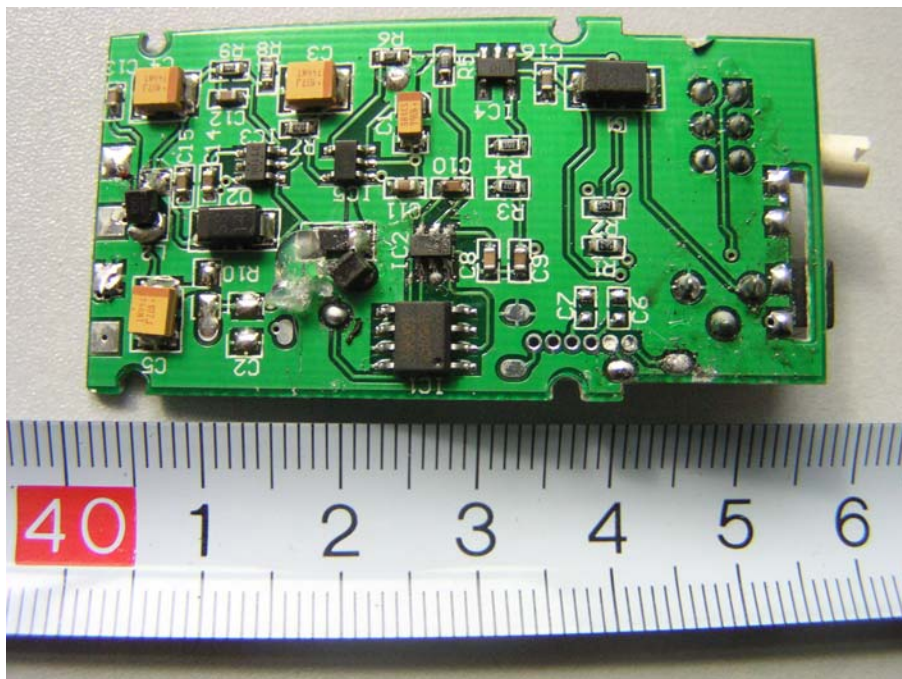


Internal Photos

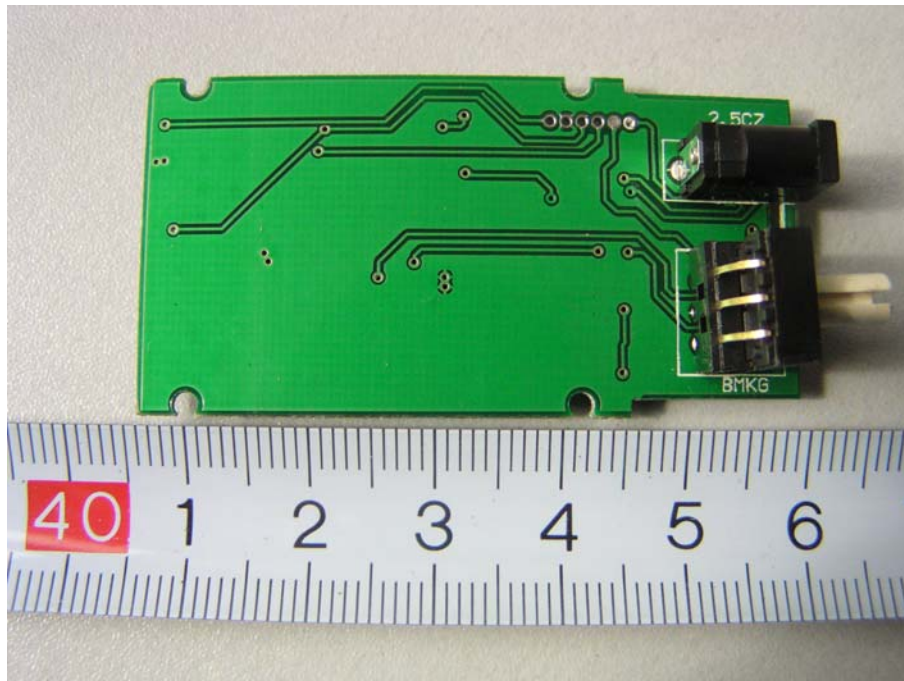
EUT-Inside View



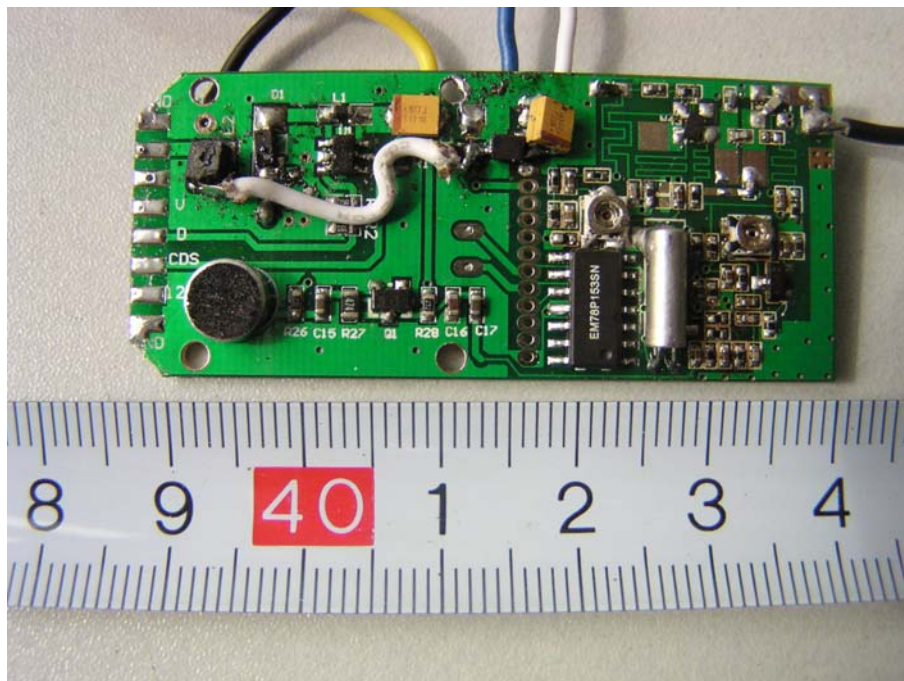
EUT- Main PCB Front



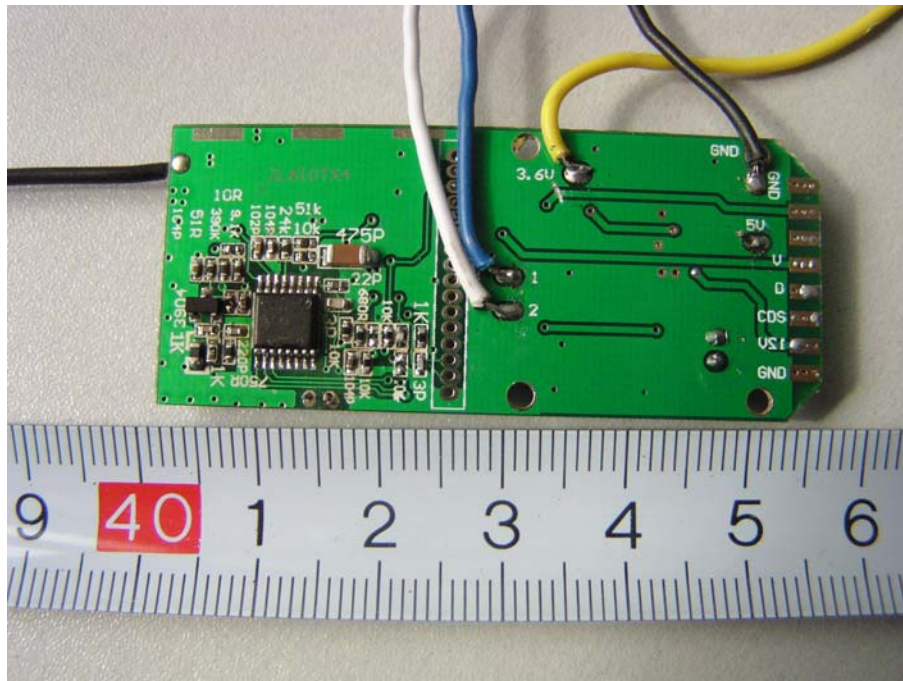
EUT- Main PCB Back



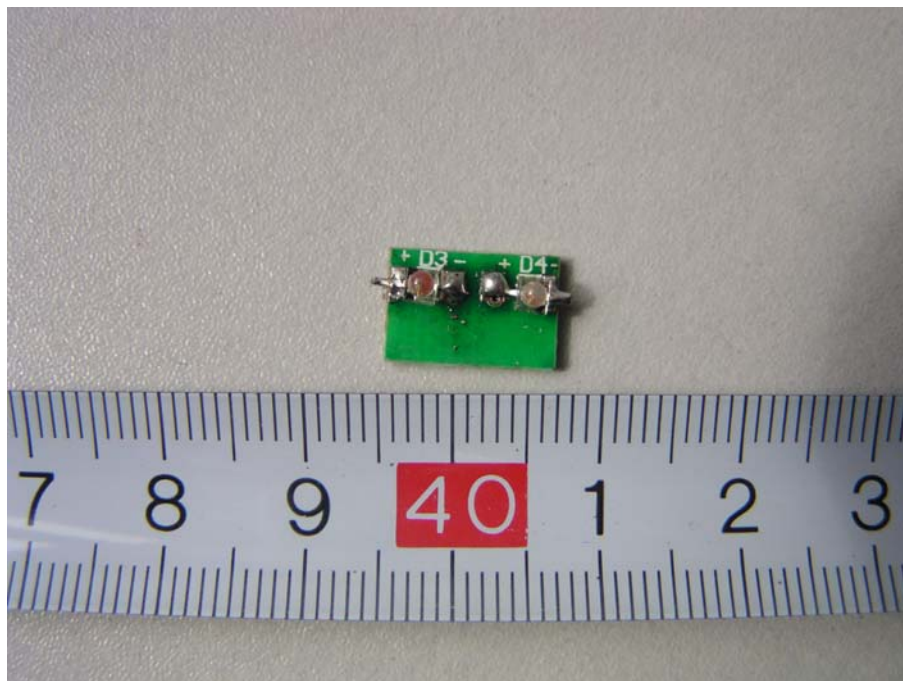
EUT- RF PCB Front View



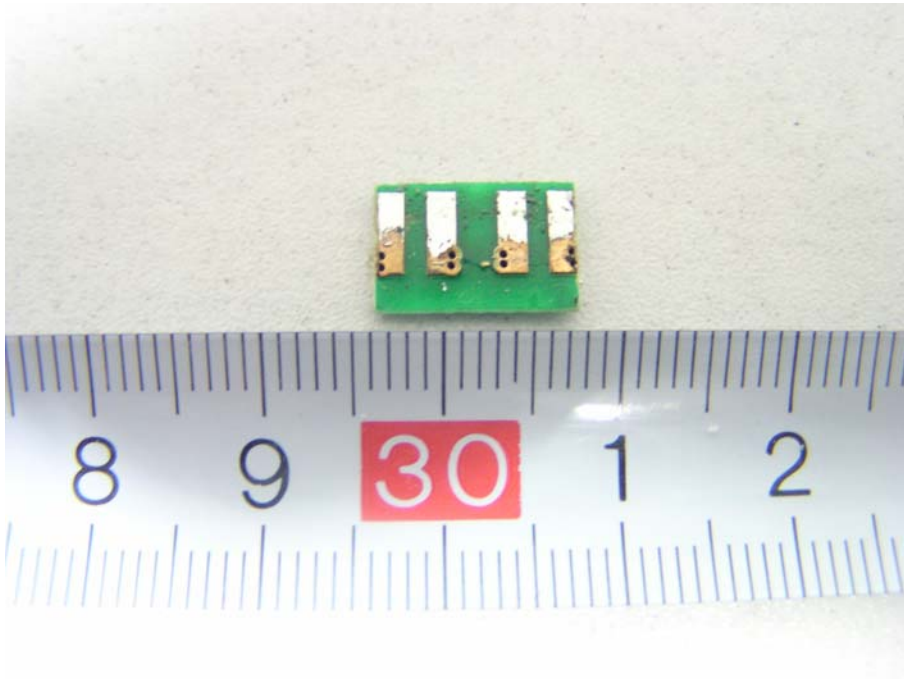
EUT- RF PCB Back View



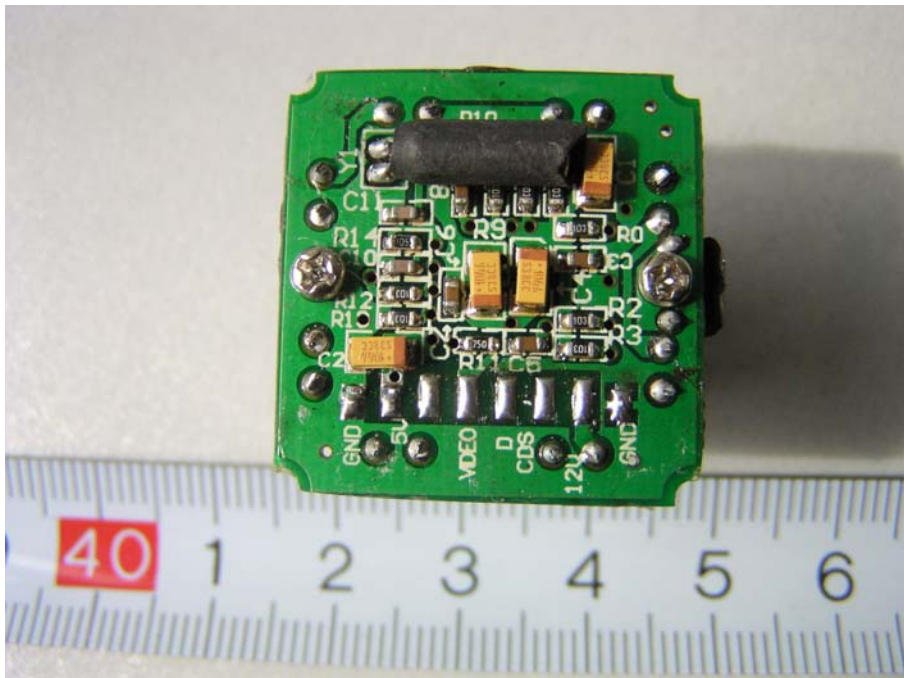
EUT- LED PCB Front View



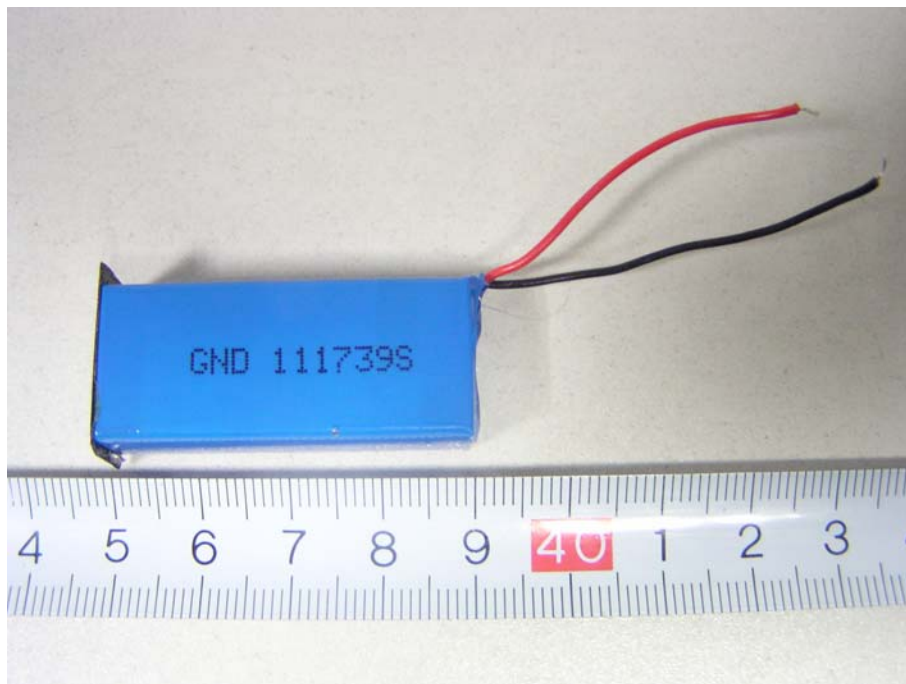
EUT- LED PCB Back View



EUT- Camera Lens PCB View



EUT- Battery Front View



EUT- Battery Back View

