

APPENDIX H
: INFORMATION OF CLASS II PERMISSIVE CHANGE

Information of Class II Permissive Change

This information is to show compliance with FCC regulation Sec. 2.1043 and to be treated as Class II permissive change.

1. Identification of apparatus

EUT Type: Automotive Handheld Scantool
Model No.: MULTISCAN
FCC ID.: RZXMULTISCAN
Applicant: Hanatech Co., Ltd.
Trade Name: Hanatech

2. Contents of change(s)

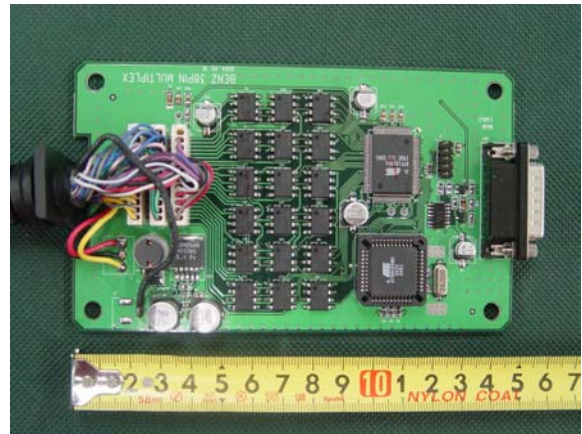
1) **Add Communication Module (Type No.: MB Pin 38 DLC Multiplex Module)**

This communication module is use for making diagnosis of Mercedes Benz.
It would be connected between Diagnostic scan tool and ECU port of Mercedes Benz.

External Photo



Internal Photo



2) **Cosmetics and design change of Key Pad except electrical parts**
There are not effects on EMC performance

Original Photo



Change Photo

