



# **USER MANUAL.**

## ***WLAN USB Adapter***

*101M 802.11g 54Mbps*



**VERSION 1.0**

Copyright © 2005 XAVI Technologies Corp.  
All rights reserved.

XAVi Technologies Corporation  
Tel: +886-2-2995-7953  
Fax: +886-2-29957954  
9F, No. 129, Hsing Te Road, Sanchung City,  
Taipei County 241,  
Taiwan

Copyright © 2005, XAVi Technologies Corporation

Information in this manual is subject to change without notice. No part of this manual may be reproduced or transmitted in any form or by any means, electronic or mechanical, including photocopying or scanning, for any purpose, without the written permission of XAVi Technologies Corporation.

XAVi Technologies Corporation provides this documentation without warranty of any kind, implied or expressed, including, but not limited to, the implied warranties of merchantability and fitness for a particular purpose.

# CERTIFICATION NOTICE

## **Federal Communications Commission Compliance Notices**

To ensure continued compliance, use only shielded interface cables when connecting to the computer or peripheral devices. Any changes or modifications not expressly approved by the party responsible for compliance could void the user's authority to operate this equipment.

## **Federal Communication Commission (FCC) Statement:**

NOTE: This equipment has been tested and found to comply with the limits for a Class B digital device, pursuant to part 15 of the FCC Rules. These limits are designed to provide reasonable protection against harmful interference in a residential installation.

This equipment generates, uses and can radiate radio frequency energy and, if not installed and used in accordance with the instructions, may cause harmful interference to radio communications. However, there is no guarantee that interference will not occur in a particular installation. If this equipment does cause harmful interference to radio or television reception, which can be determined by turning the equipment off and on, the user is encouraged to try to correct the interference by one or more of the following measures:

Reorient or relocate the receiving antenna.

Increase the separation between the equipment and receiver.

Connect the equipment into an outlet on a circuit different from that to which the receiver is connected.

Consult the dealer or an experienced radio/ TV technician for help.

**The antenna(s) used for this transmitter must not be co-located or operating in conjunction with any other antenna or transmitter.**

## **FCC Radiation Exposure Statement:**

This equipment complies with FCC radiation exposure limits set forth for an uncontrolled environment. This equipment should be installed and operated with minimum distance 20cm between the radiator & your body.

**This device complies with Part 15 of the FCC Rules. Operation is subject to the following two conditions: (1) This device may not cause harmful interference, and (2) this device must accept any interference received, including interference that may cause undesired operation.**

**This device is intended only for OEM integrators under the following conditions:**

- 1) The antenna must be installed such that 20 cm is maintained between the antenna and users.

As long as 1 condition above is met, further transmitter test will not be required. However, the OEM integrator is still responsible for testing their end-product for any additional compliance requirements required with this module installed (for example, digital device emissions, PC peripheral requirements, etc.).

**IMPORTANT NOTE:** In the event that these conditions can not be met (for example certain laptop configurations or co-location with another transmitter), then the FCC authorization is no longer considered valid and the FCC ID can not be used on the final product. In these circumstances, the OEM integrator will be responsible for re-evaluating the end product (including the transmitter) and obtaining a separate FCC authorization.

# Table of Contents

<b><i>CERTIFICATION NOTICE</i></b> .....	<b>3</b>
Federal Communications Commission Compliance Notices.....	3
Federal Communication Commission (FCC) Statement:.....	3
<b><i>INFORMATION TO USER</i></b> .....	<b>6</b>
Introduction.....	6
Package Contents .....	6
System Requirements.....	6
<b><i>How to Install XW101M:</i></b> .....	<b>7</b>
Phase I -Install XW101M Driver.....	7
Phase II -Install XW101M Hardware Winzard .....	9
<b><i>Troubleshooting</i></b> .....	<b><u>12</u></b>

# INFORMATION TO USER

## Introduction

Congratulations on purchasing this 802.11g WLAN Adapter. The XW101M Adapter 54 Mbps data rate provides an equivalent Ethernet speed to access corporate networks or the Internet in a wireless environment. And also provides easy plug & play Installation program on any computer with interface. When installed, the XW101M Adapter is able to communicate with any 802.11g-compliant product, allowing you to work anywhere in the coverage area, enjoying its convenience and mobility.

## Package Contents

The shipment should contain the following items. Please check each item below and ensure that all items listed in below are included in the shipment. If any of the listed items are damaged or missing, please notify your local dealer.

XWAVE Series: XW101M WLAN Adapter should contain:

- ▶ 802.11g WLAN Adapter
- ▶ CD-ROM (containing Drivers and Manual)

## System Requirements

Windows ME/ 2000/ XP



**If any item is missing, please contact your product provider.**

# How to Install XW101M:

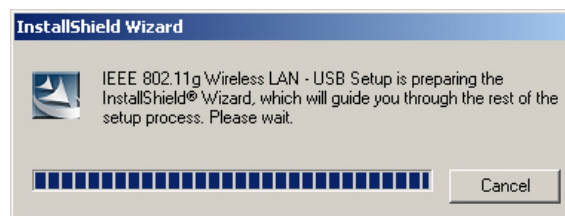
## Phase I -Install XW101M Driver

1. Turn on the computer and insert the driver CD into the appropriate drive. The installation & driver CD will automatically activate the Auto Run Installation program after you insert the disk into your CD drive.

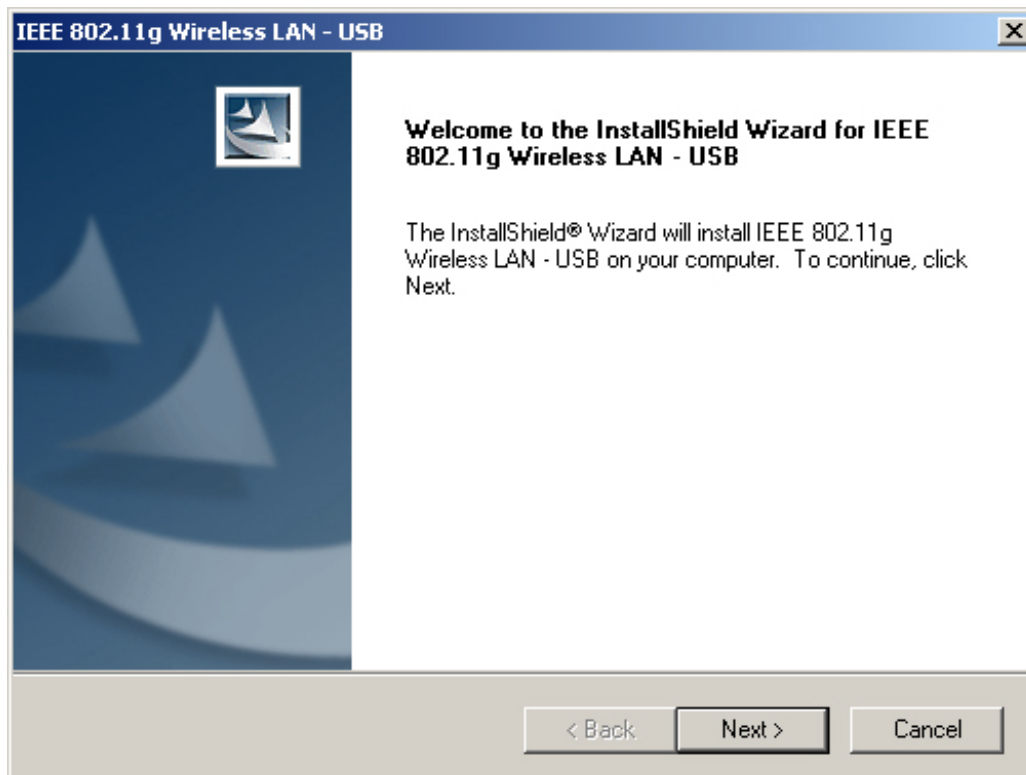


**Do not insert your WLAN Adapter into the slot until you have finished the software installation.**

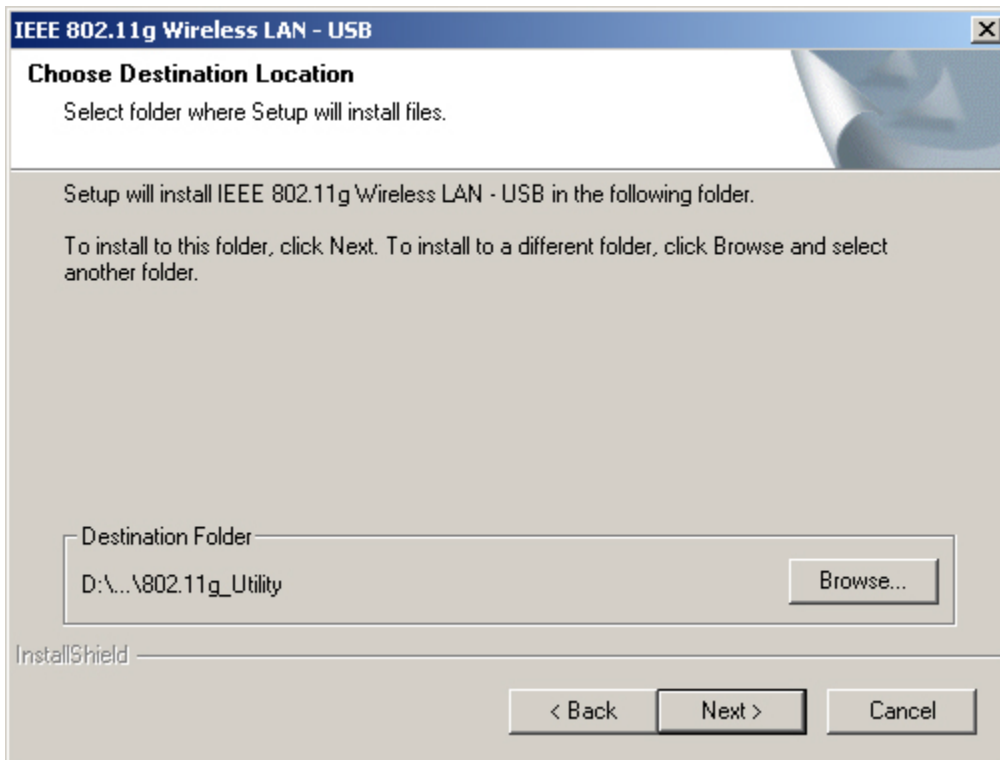
2. The install will automatically appear.



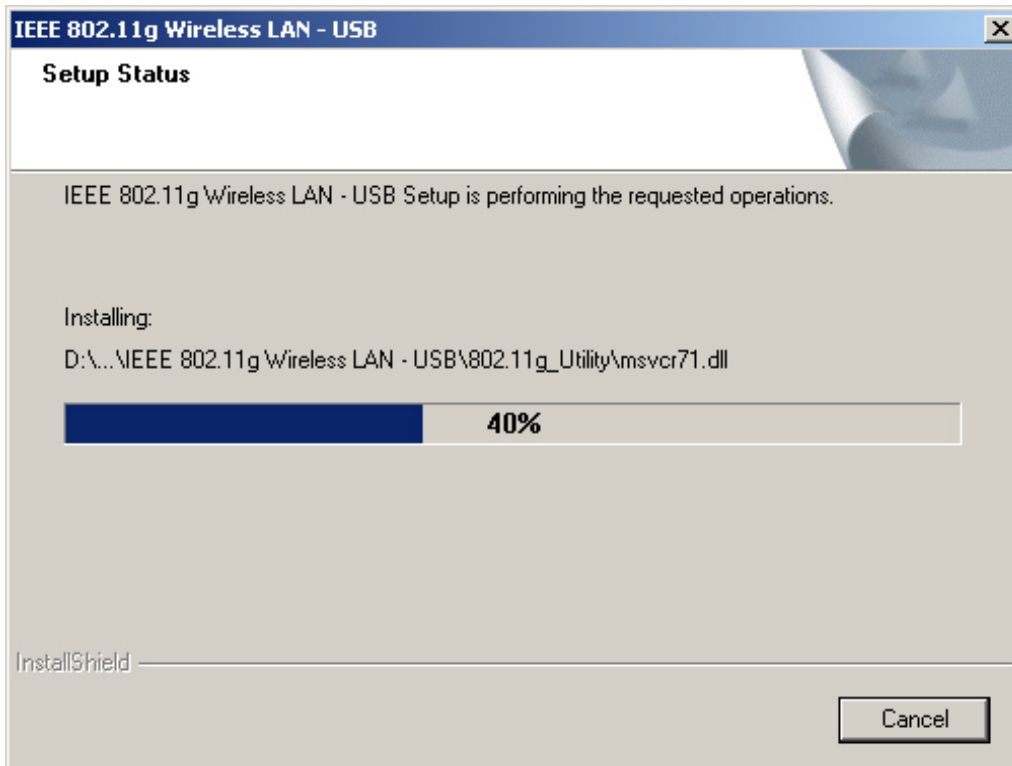
3. Click Next to continue.



4. Click Next to install at the designated folder. Or, click “Browse” to select different folder.

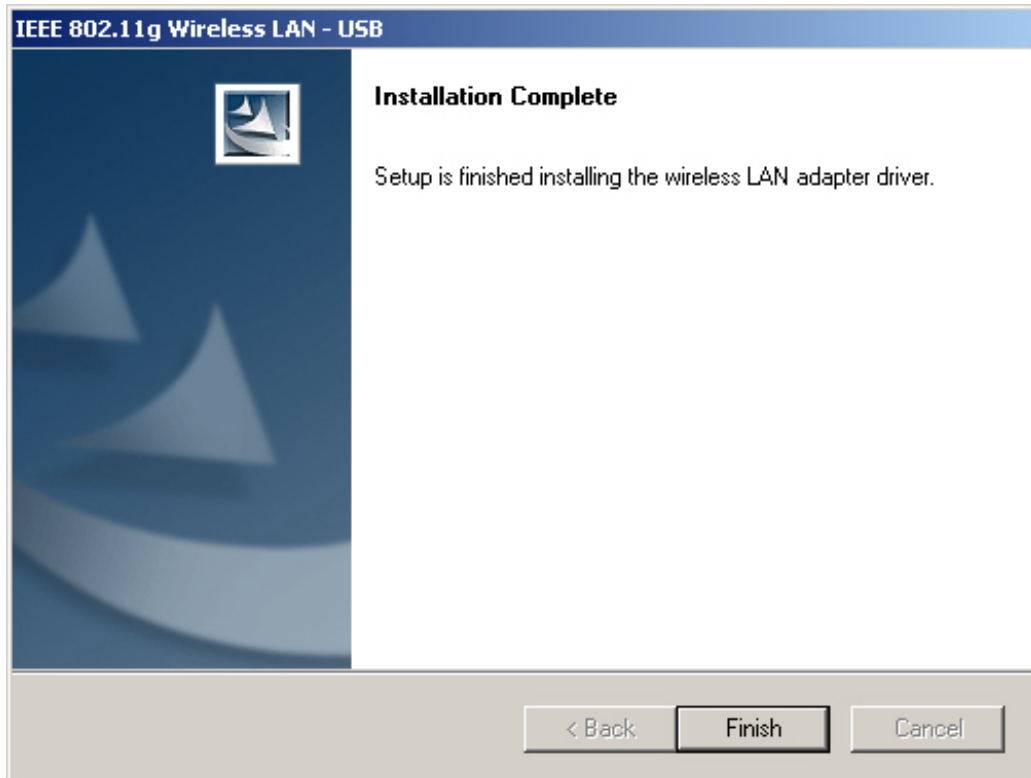


5. Start copying files until it finish the installation.



6. Click Finish to complete installation.

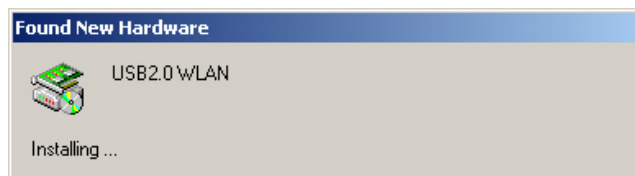




If the AutoRun function on your computer does not automatically start, then select your CD-ROM driver and double-click the file, **SETUP.EXE** under the Windows directory.

## Phase II -Install XW101M Hardware Winzard

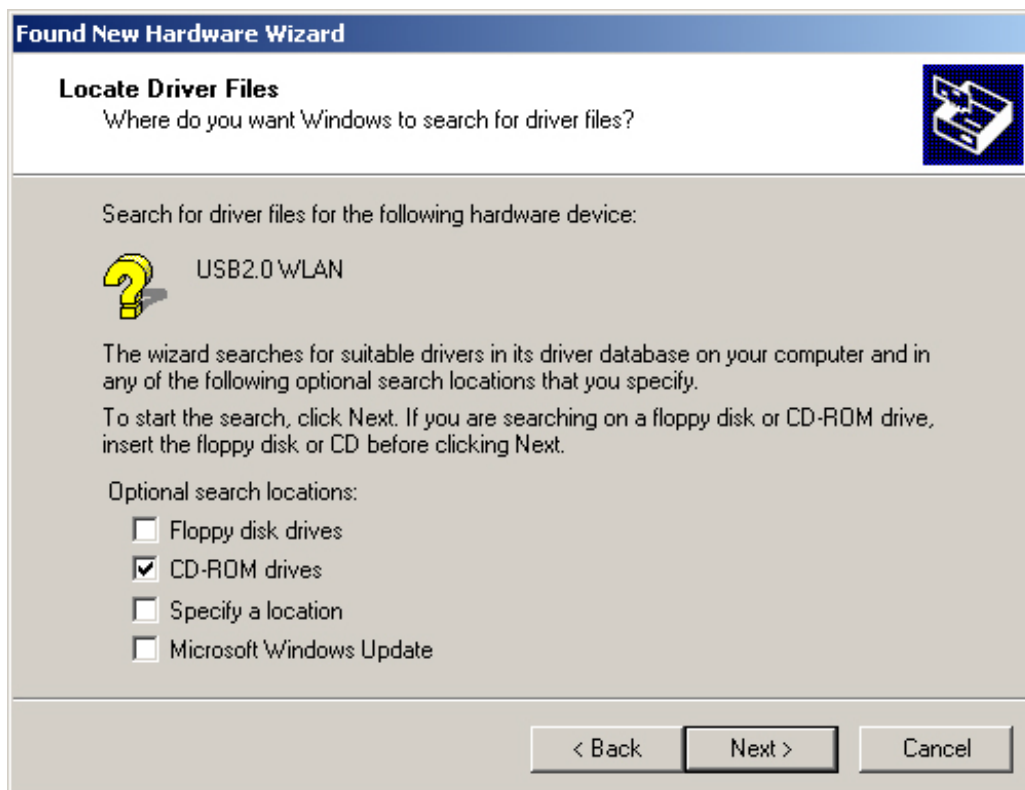
1. Find the location of the slot on your desktop or laptop. And insert the 802.11g WLAN Adapter into the slot on your desktop or laptop.
2. After inserting the WLAN Adapter into your computer, Windows will automatically detect that new hardware has been installed. Depending on which operating system you are using, the steps and screens may differ slightly. Click “**Next**” to continue installing.



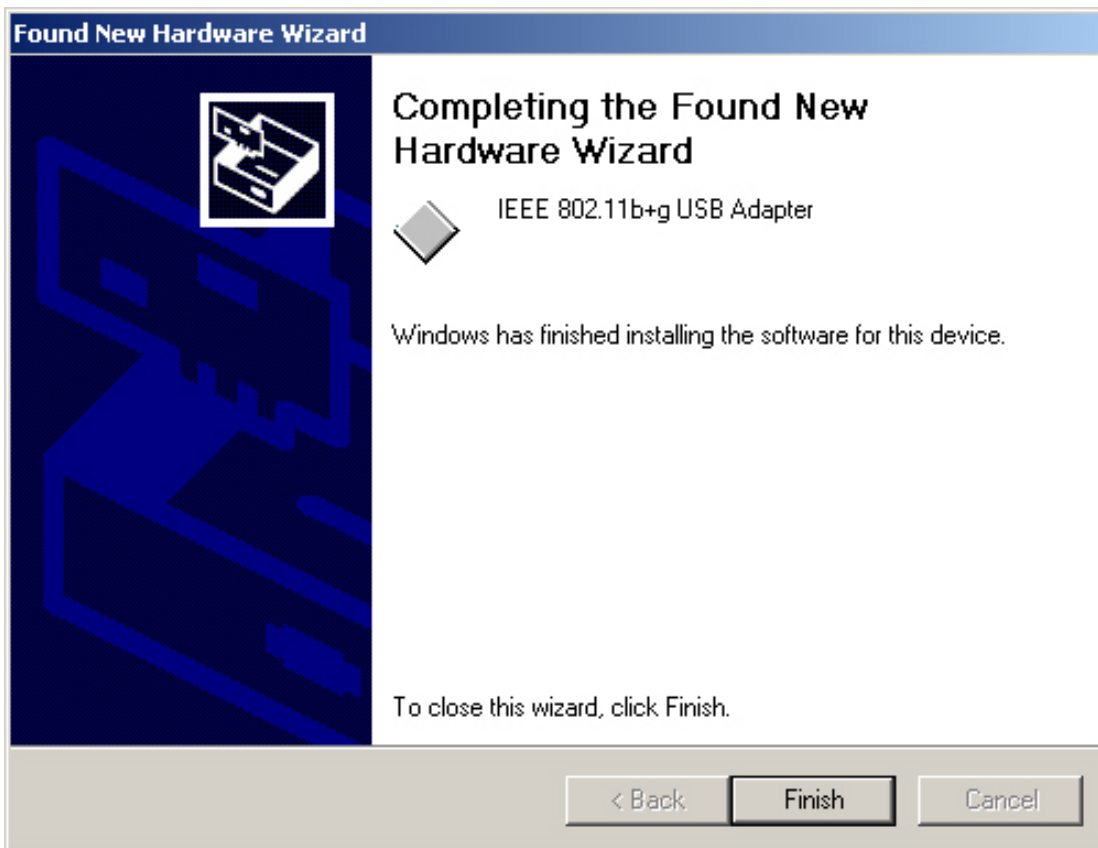
3. For searching a suitable driver automatically, check the item as shown below.



4. Select “CD-ROM drivers” for looking for suitable drivers for XW101M.



5. Press the “**Finish**” button to finish to finish the package installation.



After finishing the phase 1 installation of the driver, the NoteBook (or PC) with WinME OS shall be restarted, but Win2000 or WinXP OS doesn't need to be restarted.

# Troubleshooting

This chapter covers potential problems you may run into and the possible remedies. After each problem description, some instructions are provided to help you to diagnose and solve the problem.

**Q: When you encounter problems, there are some preliminary checklists that can help you to dig out the problems before you take further actions?**

**A:** - Try to isolate which part of the computer's network connection is causing the problem.

- Absence of, or conflict of the WLAN Card driver. Make sure that all device drivers are correctly installed (refer to chapter 3).

- Determine if the location of your WLAN Card is not conducive for wireless transmission (refer to chapter 2 "Site Selection").

If a problem persists after you follow the instructions in this chapter, contact an authorized dealer for help.

**Q: When you encounter problems during Installation?**

**A:** Don't insert your WLAN Card into the slot until you have finished the installation. If in case you should mistakenly insert your WLAN Card into your computer before installing the driver and utility, then perform the following to correct it:

Remove the WLAN Card from the slot.

Insert the driver CD into the CD-ROM drive and double-click the file **SETUP.EXE** under the Windows directory. It would locate the already installed driver and utility and uninstall it.

Re-boot your system after uninstalling.

Refer to chapter 2 and follow the instructions to properly install the driver and utility before inserting the WLAN Card.

Re-insert the WLAN Card to the computer again.

Check if the I/O and IRQ for the WLAN Card have conflict problems with other devices connected to your computer.

For Windows 98SE / 2000 / Me operating system, make sure that the device driver is installed on your computer.

**Q: During using Configuration & Monitor Utility, when you encountered the problem to connect?**

**A:** - Use the **Monitor** utility of your **Configuration & Monitor Utility** to check the *Link Quality* of your WLAN Card with the AP it is associated with (*Infrastructure* mode) or with other wireless station(s) (*Ad-Hoc* mode).

- Use the **Site Survey** utility of your **Configuration & Monitor Utility** to check if there is high interference around the environment.

**Q: When you cannot connect with Access Point?**

**A:** - Make sure that the Access Point that your WLAN Card is associated with is powered on and all the LEDs are working properly.

- Reconfigure and reset the Access Point.

- Use the Web Manager / Telnet of the Access Point to check whether it is connected to the network.

**Q: When Infrastructure mode is configured, the WLAN card cannot communicate with the computer in the Ethernet?**

**A:** - Make sure that the Access Point your WLAN Card is associated with is powered on.

- Use the **Site Survey** utility of the **Configuration & Monitor Utility** to verify if the operating radio *channel* is in good quality. Or, change the Access Point and all the wireless station(s) within the *BSSID* to another radio *channel*.

- Out-of-range situation, which prevents the WLAN Card from establishing a wireless connection with the network. Move the WLAN Card closer to the Access Point it is associated with.

- Make sure that your WLAN Card is configured with the same security option (encryption) to the Access Point.

- Make sure that the *BSSID* is the same as the Access Point for a roaming-disabled wireless station, or the *ESSID* is the same as the Access Point for a roaming-enabled wireless station.

**Q: What should I do when I cannot access the network?**

**A:** - Make sure that the necessary driver(s) was correctly installed.

- Make sure that the network configuration is appropriate.

- Make sure that the user name or password is correct.

- You have moved out of range of the network.

- Turn off power management.

**Q: When the Configuration & Monitor Utility does not work correctly.**

**A:** - Make sure that the Configuration & Monitor Utility is correctly installed (refer to chapter 5).

- If you are sure the operation has stop, reset the computer.