



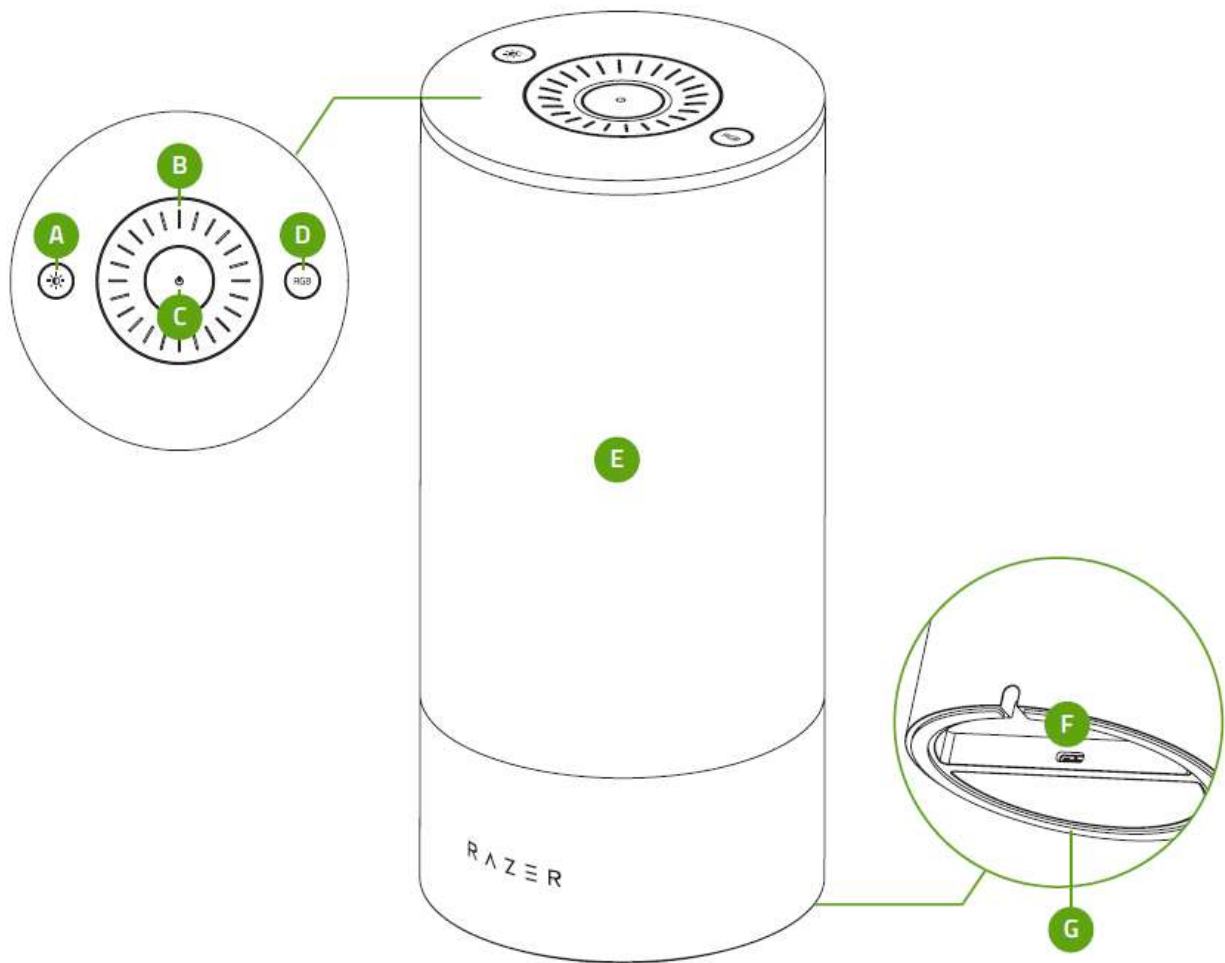
USER MANUAL

RAZER ARGB SMART LAMP
MODEL NO: RZ43-0408

WHAT'S INSIDE / WHAT'S NEEDED

WHAT'S INSIDE

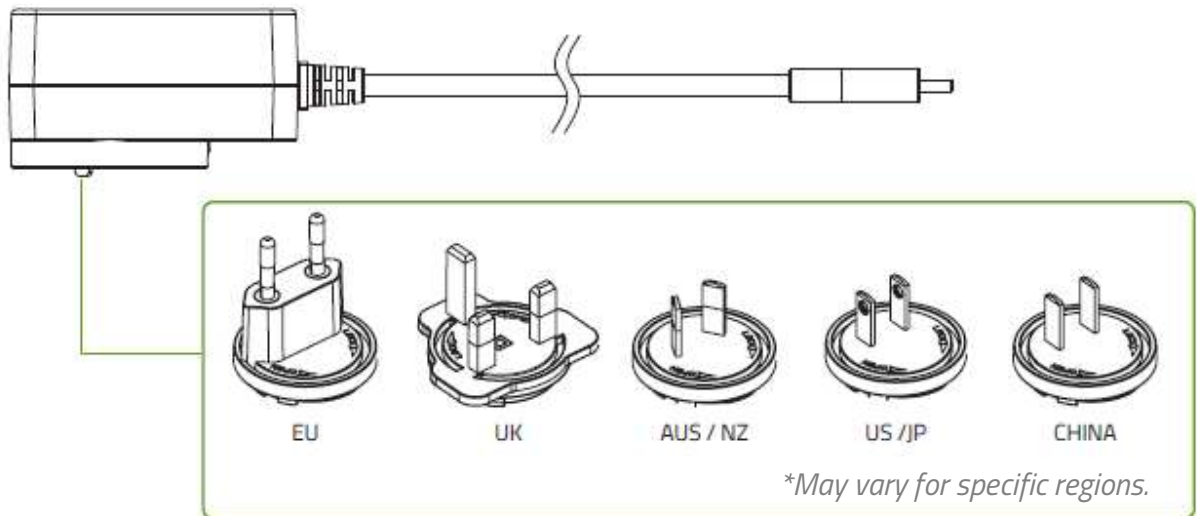
- Razer RZ43-0408



- A. Brightness button
- B. Multi-function dial
- C. Power button
- D. Mode button

- E. Lamp body powered by Razer Chroma™ RGB
- F. Power port
- G. Non-slip rubber footing

- Power adapter with interchangeable plugs*



- Important Product Information Guide

WHAT'S NEEDED

Product requirements

- 2.4 GHz WiFi network (WPA / WPA2 encryption)
- WiFi-enabled PC / Laptop (Windows® 10 64-bit or higher) or iOS / Android device**

Razer Smart Home app requirements

- iOS 13 / Android 9 Pie (or higher) device with Bluetooth connectivity**
- Internet connection for app installation

Razer Synapse requirements

- Windows® 10 64-bit (or higher)
- Internet connection for software installation

***Bluetooth connectivity required for initial setup only.*

LET'S GET YOU COVERED

You've got a great device in your hands, complete with a 1-year limited warranty coverage. Now maximize its potential and score exclusive Razer benefits by registering at razerid.razer.com

*Your product's
serial number can
be found here.*

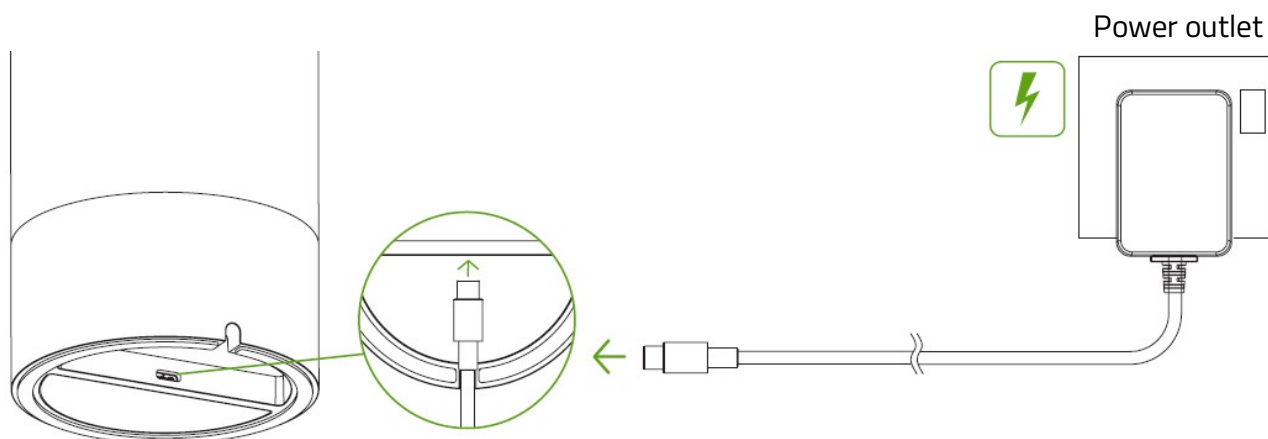


Got a question? Ask the Razer Support Team at support.razer.com

GETTING STARTED

SETTING IT UP

With the appropriate AC plug for your region attached to the power adapter, connect it to the smart lamp's power port and plug it into a power outlet.



CUSTOMIZING THE SMART LAMP

A. Via mobile device using the Razer Smart Home app (required)

1. Download the Razer Smart Home app on your mobile device.



2. Press the power button to power on the smart lamp.
3. Launch the app and follow the onscreen instructions.

i When prompted to select a WiFi network, select the same network used by your mobile device. Your mobile device must be connected to the same network whenever customizing the smart lamp.

You can now customize the Razer RZ43-0408 using the Razer Smart Home app.

B. Via PC / laptop using the Razer Synapse app

i Before proceeding, make sure you've already set up the smart lamp on your network from the Razer Smart Home app, and your PC is connected to the same network as the smart lamp

1. Go to razer.com/synapse to download and launch Razer Synapse. For existing users, make sure to update Razer Synapse to its latest version.

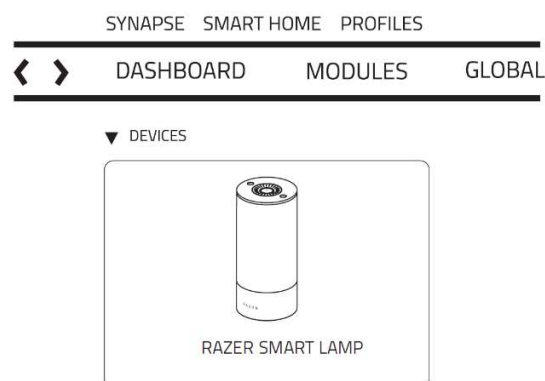
! Registering for a Razer ID account is recommended but optional. You may continue as a guest; however, you won't be able to store any of your settings on the cloud.

2. Press the power button to power on the smart lamp.
3. On Razer Synapse, click on **Add Smart Home Device**, and follow the onscreen instructions.



ADD SMART HOME DEVICE

4. Update when prompted, and wait for Razer Synapse to set up the Razer RZ43-0408. The Razer Synapse Dashboard will now show the Razer RZ43-0408 on the Devices list.



You can now customize the Razer RZ43-0408 using Razer Synapse.

UNDERSTANDING PAIRING MODE

Pairing mode is required when setting up the smart lamp from the Razer Smart Home app. Pairing mode is activated when you power it on and deactivates when the smart lamp is left unpaired for 5 minutes. To reactivate pairing mode, switch off and on the smart lamp's power supply to power it on.

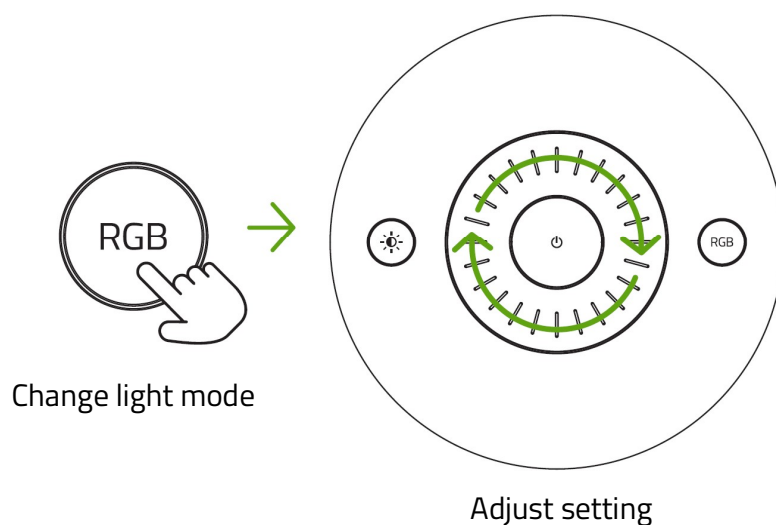
USING THE SMART LAMP

POWER ON/OFF

Press the power button to power on or off the smart lamp.

CHANGING THE LIGHT MODE

Press the mode button to cycle through the White light, Static, Fire, Breathing, and Chroma light modes. You can then use the multi-function dial to adjust the active light mode's setting.



Light mode	Description	Dial function
White light	The smart lamp will be lit in white	Adjust how cool or warm the light of the lamp is.
Static	The smart lamp will be lit using the active color	Switch between the following colors: red, orange, yellow, green, cyan, blue, and purple.
Fire	The lighting will mimic the motion of flames using the active color	
Breathing	The light will fade in and out of the active color	

Chroma

The smart lamp will use the active Chroma effect. By default, this is set to Upward wave.

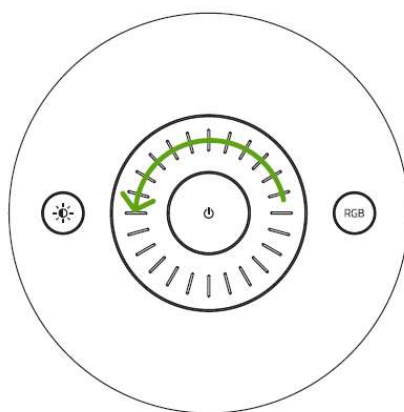
Rotate clockwise or counterclockwise to cycle through the following Chroma effects back and forth: upward wave, downward wave, clockwise wave, counterclockwise wave, and spectrum cycling

ADJUSTING BRIGHTNESS

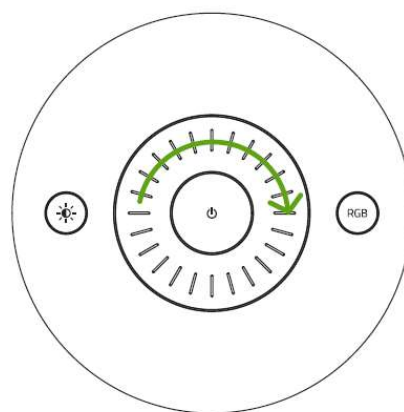
On any light mode, pressing the brightness button will allow you to use the multi-function dial to increase or decrease the brightness of the smart lamp's active light mode.



Enable brightness adjustment



Decrease brightness

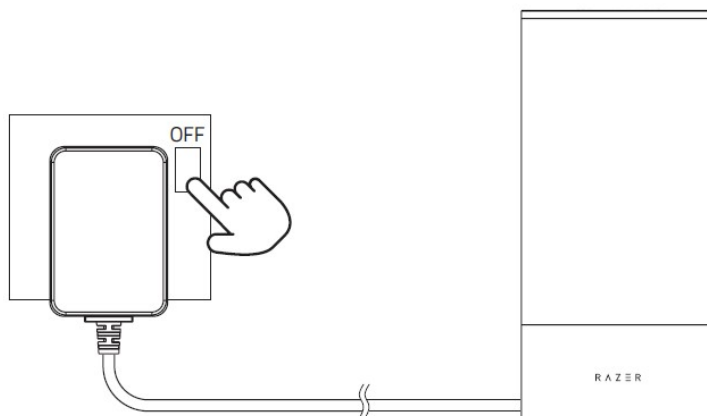


Increase brightness

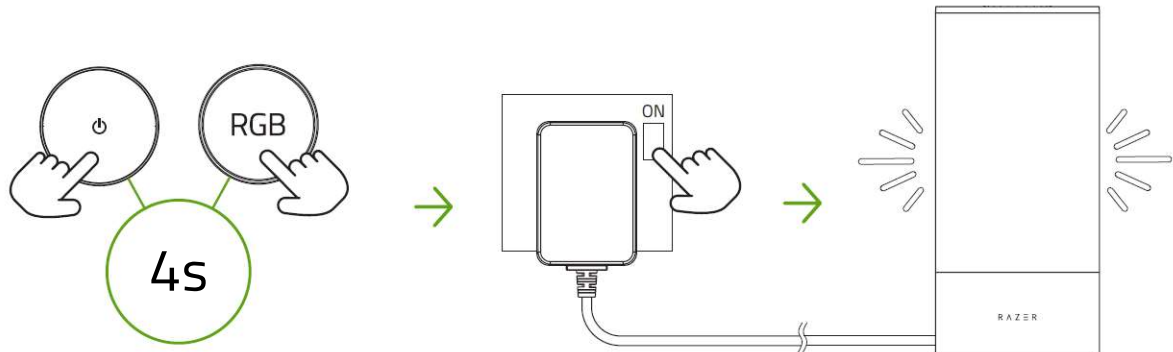
RESETTING TO FACTORY SETTINGS

Once connected, a reset is required to connect the smart lamp to a new device.

1. Switch off the smart lamp's power supply.



2. While holding the power and mode buttons, switch on the power supply and continue holding the power and mode buttons for 4 seconds.



The smart lamp will briefly cycle through red, green, blue before displaying white when the reset is successful.

3. Use the Razer Smart Home app to connect the Razer RZ43-0408 to a new mobile device.

SAFETY AND MAINTENANCE

SAFETY GUIDELINES

In order to achieve maximum safety while using your Razer RZ43-0408, we suggest that you adopt the following guidelines:

- Should you have trouble operating the device properly and troubleshooting does not work, unplug the device and contact the Razer hotline or go to support.razer.com for assistance.
- Don't take apart the device and attempt to operate it under abnormal current loads. Doing so will void your warranty.
- Don't replace the light source of this device. This should only be replaced by the manufacturer, service agent, or a similarly qualified person.
- Only use the device indoors.
- Don't use or install the device near water, moisture, solvents, or other wet surfaces, nor expose it to high temperatures or direct sunlight.
- Don't use or install the device and its components near water, moisture, solvents, or other wet surfaces, nor expose the device to high temperatures or direct sunlight for an extended period of time. In addition, don't expose the phone to extremely high temperatures or direct sunlight for extended periods.
- Keep the device away from liquid, humidity or moisture. Operate the device only within the specific temperature range of 0°C (32°F) to 40°C (104°F). Should the temperature exceed this range, unplug and/or switch off the device in order to let the temperature stabilize to an optimal level.

MAINTENANCE AND USE

The Razer RZ43-0408 requires minimum maintenance to keep it in optimum condition. Once a month we recommend you clean it using a soft cloth to prevent dirt buildup. Don't use soap or harsh cleaning agents.



For indoor use only.

The light source contained in this luminaire shall only be replaced by the manufacturer or his service agent or a similar qualified person.

This product contains a light source of energy efficiency class C.

LEGALESE

COPYRIGHT AND INTELLECTUAL PROPERTY INFORMATION

©2022 Razer Inc. All rights reserved. Razer, the triple-headed snake logo, Razer logo, and "For Gamers. By Gamers." are trademarks or registered trademarks of Razer Inc. and/or affiliated companies in the United States or other countries. All other trademarks are the property of their respective owners.

Android, Google, Google Logo, Google Play, and the Google Play logo are trademarks of Google LLC.

Apple, the Apple logo, and iPhone are trademarks of Apple Inc., registered in the U.S. and other countries. App Store is a service mark of Apple Inc. iOS is a trademark or registered trademark of Cisco in the U.S. and other countries and is used under license.

The Bluetooth® word mark and logos are registered trademarks owned by Bluetooth SIG, Inc., and any use of such marks by Razer is under license.

Windows and the Windows logo are trademarks of the Microsoft group of companies.

Razer Inc. ("Razer") may have copyright, trademarks, trade secrets, patents, patent applications, or other intellectual property rights (whether registered or unregistered) concerning the product in this guide. Furnishing of this guide does not give you a license to any such copyright, trademark, patent or other intellectual property right. The Razer RZ43-0408 (the "Product") may differ from pictures whether on packaging or otherwise. Razer assumes no responsibility for such differences or for any errors that may appear. Information contained herein is subject to change without notice.

LIMITED PRODUCT WARRANTY

For the latest and current terms of the Limited Product Warranty, please visit [razer.com/warranty](https://www.razer.com/warranty).

LIMITATION OF LIABILITY

Razer shall in no event be liable for any lost profits, loss of information or data, special, incidental, indirect, punitive or consequential or incidental damages, arising in any way out of distribution of, sale of, resale of, use of, or inability to use the Product. In no event shall Razer's liability exceed the retail purchase price of the Product.

GENERAL

These terms shall be governed by and construed under the laws of the jurisdiction in which the Product was purchased. If any term herein is held to be invalid or unenforceable, then such term (in

so far as it is invalid or unenforceable) shall be given no effect and deemed to be excluded without invalidating any of the remaining terms. Razer reserves the right to amend any term at any time without notice.

REGULATORY

FCC COMPLIANCE STATEMENTS

This device complies with Part 15 of the FCC Rules. Operation is subject to the following two conditions: (1) this device may not cause harmful interference, and (2) this device must accept any interference received, including interference that may cause undesired operation.

Note: This equipment has been tested and found to comply with the limits for a Class B digital device, pursuant to Part 15 of the FCC Rules. These limits are designed to provide reasonable protection against harmful interference in a residential installation. This equipment generates, uses and can radiate radio frequency energy and, if not installed and used in accordance with the instructions, may cause harmful interference to radio communications. However, there is no guarantee that interference will not occur in a particular installation.

If this equipment does cause harmful interference to radio or television reception, which can be determined by turning the equipment off and on, the user is encouraged to try to correct the interference by one or more of the following measures:

- Reorient or relocate the receiving antenna.
- Increase the separation between the equipment and receiver.
- Connect the equipment into an outlet on a circuit different from that to which the receiver is connected.
- Consult the dealer or an experienced radio/TV technician for help.

Caution: Changes or modifications not expressly approved by the party responsible for compliance could void the user's authority to operate the equipment.

This equipment complies with FCC radiation exposure limits set forth for an uncontrolled environment. This equipment should be installed and operated with minimum distance 20cm between the radiator and your body. This transmitter must not be co-located or operating in conjunction with any other antenna or transmitter.

SUPPLIER'S DECLARATION OF CONFORMITY

FCC ID: RWO-RZ430408

IC: 8092D-RZ430408

Trade Name: RAZER

Model No.: RZ43-0408

Responsible Party – U.S. Contact Information

US Company Name: Razer Inc.

Address: 9 Pasteur, Suite 100 Irvine California 92618 United States

Telephone number or internet contact information: <https://support.razer.com/>

ISED Compliance Statements

This device contains licence-exempt transmitter(s)/receiver(s) that comply with Innovation, Science and Economic Development Canada's licence-exempt RSS(s). Operation is subject to the following two conditions:

- (1) This device may not cause interference.
- (2) This device must accept any interference, including interference that may cause undesired operation of the device.

This equipment complies with IC RSS-102 radiation exposure limits set forth for an uncontrolled environment. This equipment should be installed and operated with minimum distance 20cm between the radiator and your body.

L'émetteur/récepteur exempt de licence contenu dans le présent appareil est conforme aux CNR d'Innovation, Sciences et Développement économique Canada applicables aux appareils radio exempts de licence. L'exploitation est autorisée aux deux conditions suivantes :

- (1) L'appareil ne doit pas produire de brouillage;
- (2) L'appareil doit accepter tout brouillage radioélectrique subi, même si le brouillage est susceptible d'en compromettre le fonctionnement.

Cet équipement est conforme aux limites d'exposition aux radiations IC CNR-102 établies pour un environnement non contrôlé. Cet équipement doit être installé et utilisé avec une distance minimale de 20cm entre le radiateur et votre corps.