

Test Laboratory: BTL Inc.

Date: 2020/8/25

## System Check\_H2450\_0825

**DUT: Dipole 2450 MHz D2450V2;SN:919;**

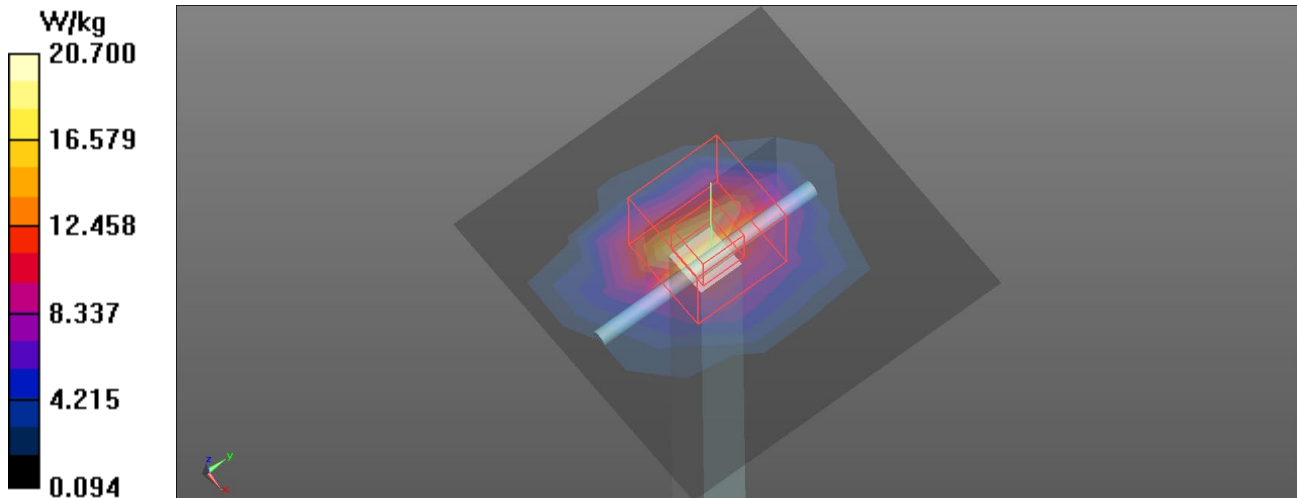
Communication System: UID 0, CW (0); Frequency: 2450 MHz; Duty Cycle: 1:1  
Medium parameters used (interpolated):  $f = 2450$  MHz;  $\sigma = 1.767$  S/m;  $\epsilon_r = 38.572$ ;  $\rho = 1000$  kg/m<sup>3</sup>  
Ambient Temperature: 23.3 °C; Liquid Temperature: 22.4 °C

DASY Configuration:

- Probe: EX3DV4 - SN7544; ConvF(7.58, 7.58, 7.58) @ 2450 MHz; Calibrated: 2019/9/9
- Sensor-Surface: 1.4mm (Mechanical Surface Detection),  $z = 1.0, 31.0$
- Electronics: DAE4 Sn1390; Calibrated: 2019/5/25
- Phantom: ELI v5.0; Type: QDOVA002AA; Serial: TP:1222
- DASY52 52.10.2(1495); SEMCAD X 14.6.12(7450)

**Area Scan (8x8x1):** Measurement grid:  $dx=12$ mm,  $dy=12$ mm  
Maximum value of SAR (measured) = 16.6 W/kg

**Zoom Scan (7x7x7)/Cube 0:** Measurement grid:  $dx=5$ mm,  $dy=5$ mm,  $dz=5$ mm  
Reference Value = 101.4 V/m; Power Drift = 0.17 dB  
Peak SAR (extrapolated) = 25.0 W/kg  
**SAR(1 g) = 12.5 W/kg; SAR(10 g) = 5.83 W/kg**  
Maximum value of SAR (measured) = 20.7 W/kg



Test Laboratory: BTL Inc.

Date: 2020/8/25

### System Check\_H5300\_0825

**DUT: Dipole D5GHzV2;SN:1160;**

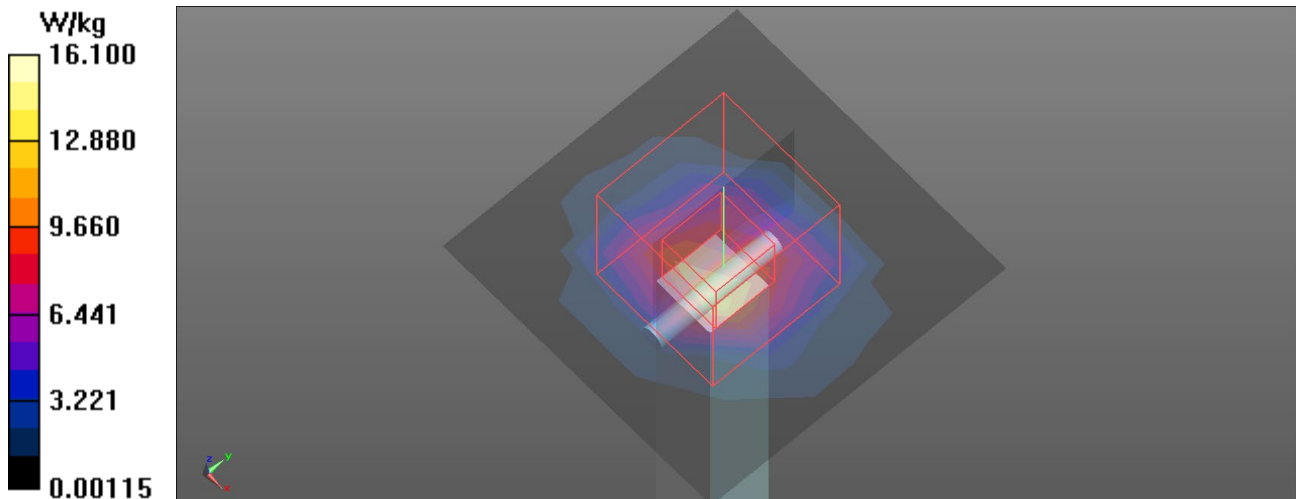
Communication System: UID 0, CW (0); Frequency: 5300 MHz; Duty Cycle: 1:1  
Medium parameters used (interpolated):  $f = 5300$  MHz;  $\sigma = 4.592$  S/m;  $\epsilon_r = 35.887$ ;  $\rho = 1000$  kg/m<sup>3</sup>  
Ambient Temperature: 23.2 °C; Liquid Temperature: 22.1 °C

DASY Configuration:

- Probe: EX3DV4 - SN7544; ConvF(5.21, 5.21, 5.21) @ 5300 MHz; Calibrated: 2019/9/9
- Sensor-Surface: 1.4mm (Mechanical Surface Detection),  $z = 1.0, 23.0$
- Electronics: DAE4 Sn1390; Calibrated: 2019/10/29
- Phantom: ELI v5.0; Type: QDOVA002AA; Serial: TP:1222
- DASY52 52.10.2(1495); SEMCAD X 14.6.12(7450)

**Area Scan (6x6x1):** Measurement grid:  $dx=10$ mm,  $dy=10$ mm  
Maximum value of SAR (measured) = 11.3 W/kg

**Zoom Scan (7x7x12)/Cube 0:** Measurement grid:  $dx=4$ mm,  $dy=4$ mm,  $dz=2$ mm  
Reference Value = 61.41 V/m; Power Drift = -0.00 dB  
Peak SAR (extrapolated) = 32.8 W/kg  
**SAR(1 g) = 7.58 W/kg; SAR(10 g) = 2.17 W/kg**  
Maximum value of SAR (measured) = 16.1 W/kg



Test Laboratory: BTL Inc.

Date: 2020/8/25

**System Check\_H5600\_0825**

**DUT: Dipole D5GHzV2;SN:1160;**

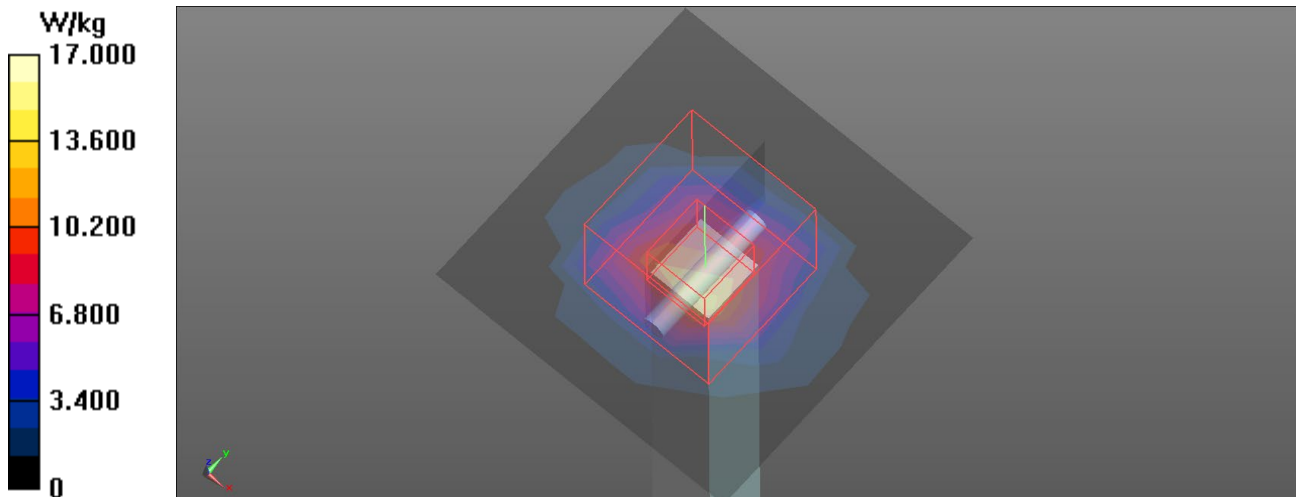
Communication System: UID 0, CW (0); Frequency: 5600 MHz; Duty Cycle: 1:1  
Medium parameters used:  $f = 5600$  MHz;  $\sigma = 4.915$  S/m;  $\epsilon_r = 35.065$ ;  $\rho = 1000$  kg/m<sup>3</sup>  
Ambient Temperature: 23.2 °C; Liquid Temperature: 22.1 °C

DASY Configuration:

- Probe: EX3DV4 - SN7544; ConvF(4.81, 4.81, 4.81) @ 5600 MHz; Calibrated: 2019/9/9
- Sensor-Surface: 1.4mm (Mechanical Surface Detection),  $z = 1.0, 23.0$
- Electronics: DAE4 Sn1390; Calibrated: 2019/10/29
- Phantom: ELI v5.0; Type: QDOVA002AA; Serial: TP:1222
- DASY52 52.10.2(1495); SEMCAD X 14.6.12(7450)

**Area Scan (6x6x1):** Measurement grid:  $dx=10$ mm,  $dy=10$ mm  
Maximum value of SAR (measured) = 12.0 W/kg

**Zoom Scan (7x7x12)/Cube 0:** Measurement grid:  $dx=4$ mm,  $dy=4$ mm,  $dz=2$ mm  
Reference Value = 61.11 V/m; Power Drift = -0.03 dB  
Peak SAR (extrapolated) = 37.1 W/kg  
**SAR(1 g) = 7.86 W/kg; SAR(10 g) = 2.22 W/kg**  
Maximum value of SAR (measured) = 17.0 W/kg



Test Laboratory: BTL Inc.

Date: 2020/8/25

### System Check\_H5800\_0825

**DUT: Dipole D5GHzV2;SN:1160;**

Communication System: UID 0, CW (0); Frequency: 5800 MHz; Duty Cycle: 1:1  
Medium parameters used:  $f = 5800$  MHz;  $\sigma = 5.172$  S/m;  $\epsilon_r = 34.661$ ;  $\rho = 1000$  kg/m<sup>3</sup>  
Ambient Temperature: 23.2 °C; Liquid Temperature: 22.1 °C

DASY Configuration:

- Probe: EX3DV4 - SN7544; ConvF(4.75, 4.75, 4.75) @ 5800 MHz; Calibrated: 2019/9/9
- Sensor-Surface: 1.4mm (Mechanical Surface Detection),  $z = 1.0, 23.0$
- Electronics: DAE4 Sn1390; Calibrated: 2019/10/29
- Phantom: ELI v5.0; Type: QDOVA002AA; Serial: TP:1222
- DASY52 52.10.2(1495); SEMCAD X 14.6.12(7450)

**Area Scan (6x6x1):** Measurement grid:  $dx=10$ mm,  $dy=10$ mm  
Maximum value of SAR (measured) = 11.2 W/kg

**Zoom Scan (7x7x12)/Cube 0:** Measurement grid:  $dx=4$ mm,  $dy=4$ mm,  $dz=2$ mm  
Reference Value = 58.65 V/m; Power Drift = -0.01 dB  
Peak SAR (extrapolated) = 37.0 W/kg  
**SAR(1 g) = 7.67 W/kg; SAR(10 g) = 2.19 W/kg**  
Maximum value of SAR (measured) = 16.4 W/kg

