

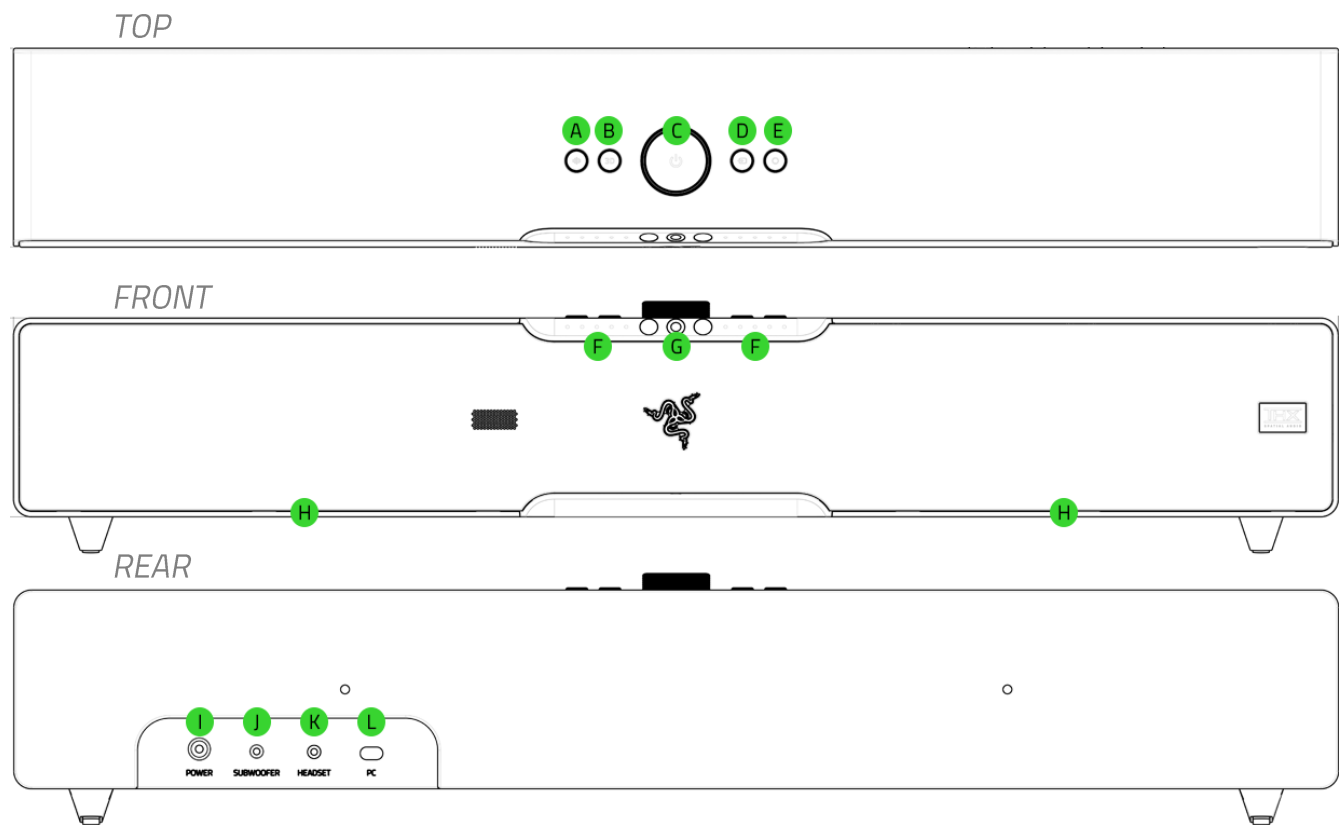


# **GAMING SOUNDBAR (RZ05-0416), WOOFER (RC30-0416)**

IMPORTANT PRODUCT INFORMATION GUIDE

## WHAT'S INSIDE

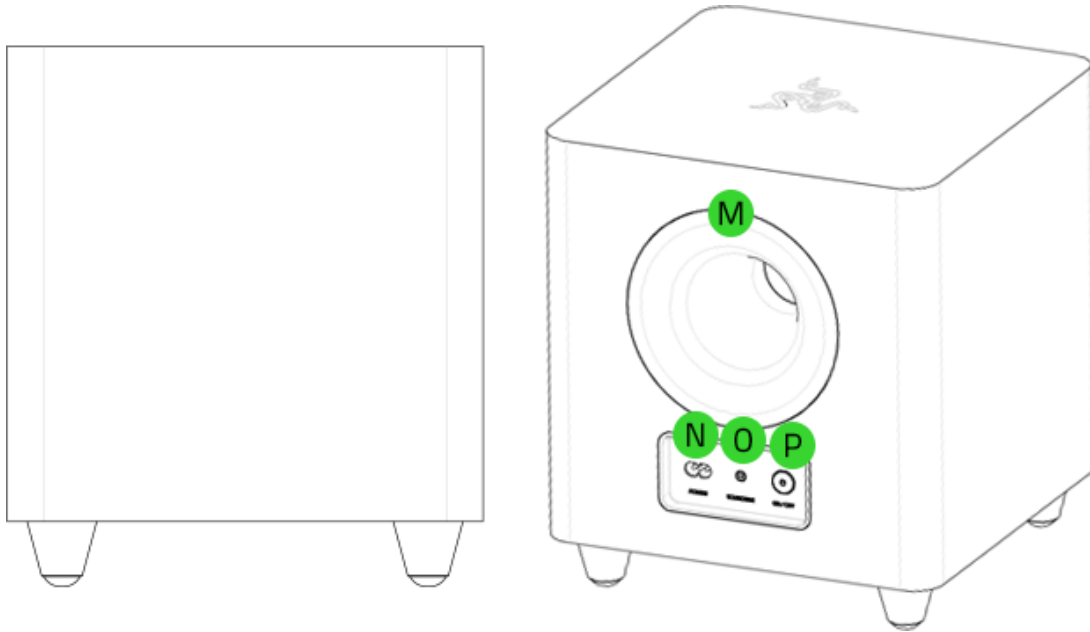
- GAMING SOUNDBAR (RZ05-0416), WOOFER (RC30-0416)



- |                                       |   |
|---------------------------------------|---|
| A. Equalizer button                   | G. Integrated smart IR camera*                    |
| B. Audio mode button                  | H. Soundbar lighting Powered by Razer Chroma™ RGB |
| C. Power button / Volume control knob | I. Power port                                     |
| D. Source button                      | J. Subwoofer port                                 |
| E. Chroma button                      | K. Headset port                                   |
| F. Indicator LEDs                     | L. USB Type C port                                |

*\*The soundbar only utilizes the smart IR camera to detect and track the position of your ears; it's not capable of capturing images or recording videos.*

- Subwoofer

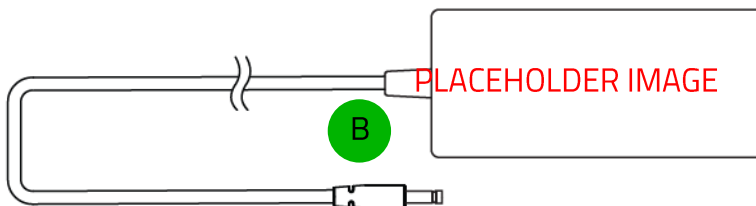


- M. Rear-facing bass port
- N. Power port
- O. Soundbar port
- P. Power button

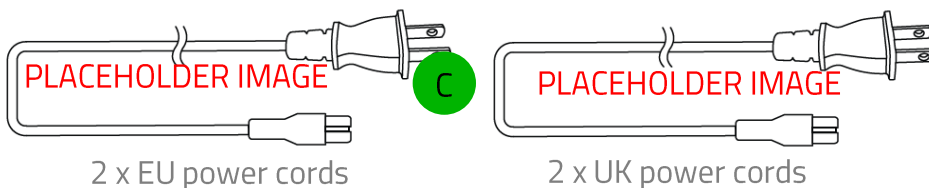
- USB Type A to USB Type C cable



- Soundbar power adapter



- Soundbar and subwoofer regional power cords\*



*\*May vary for specific regions.*

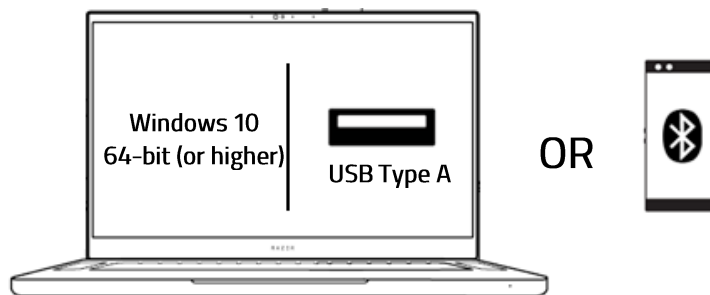
- 2.5 mm Aux cable (for soundbar to subwoofer connection)



- Important Product Information Guide

---

## WHAT'S NEEDED



---

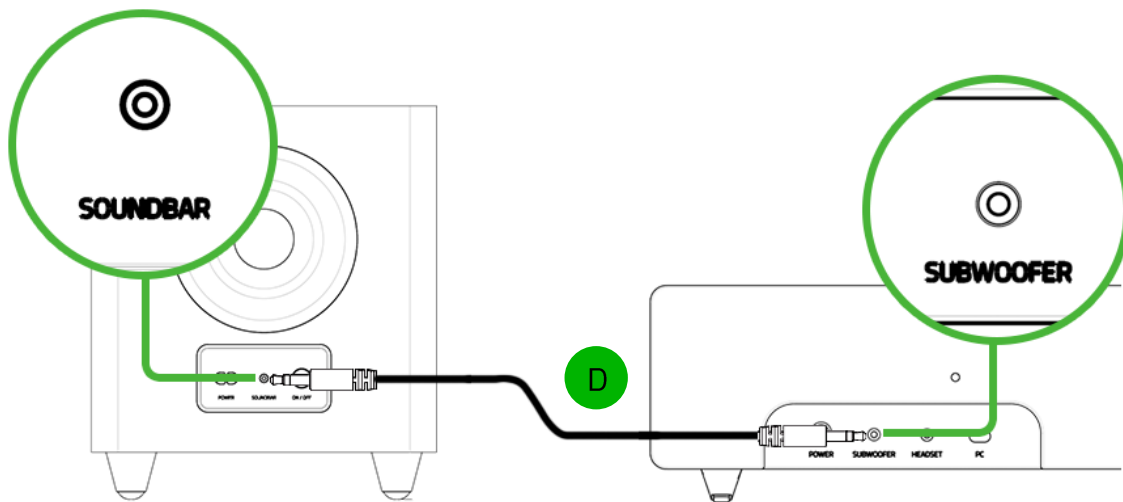
## LET'S GET YOU COVERED



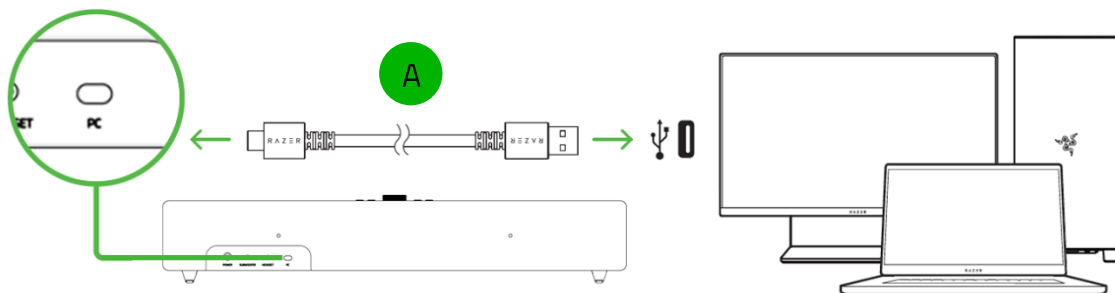
Register your product and score exclusive benefits  
[razerid.razer.com/warranty](https://razerid.razer.com/warranty)

## SETTING UP YOUR GAMING SOUNDBAR, WOOFER

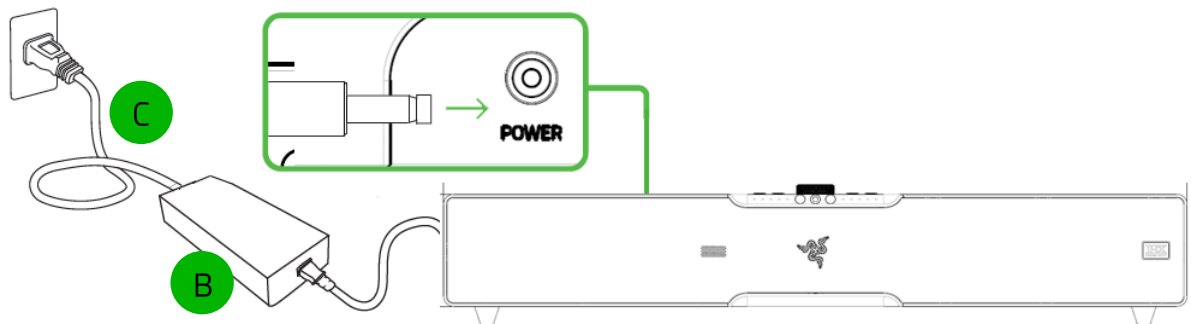
1.



2.

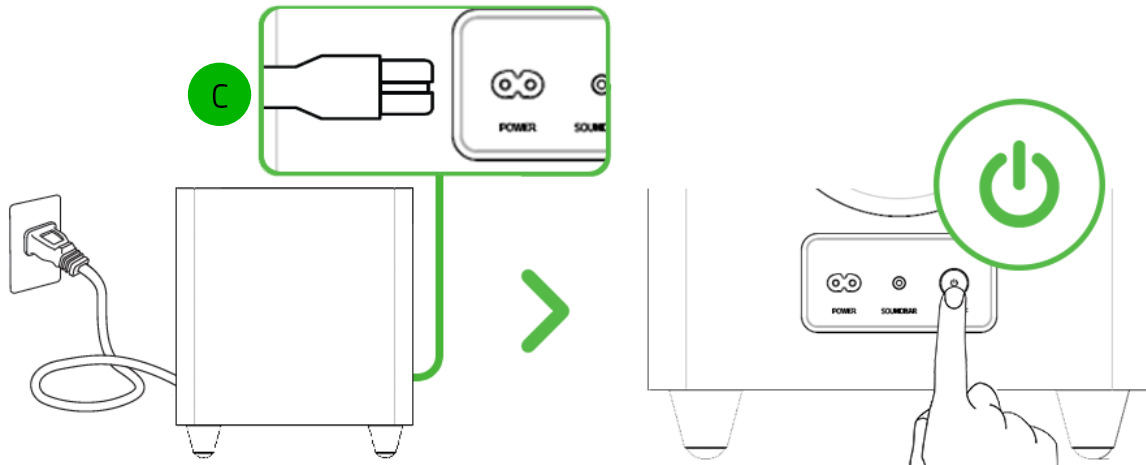


3.



! Use the appropriate power cord for your region.

4.



 Use the appropriate power cord for your region.

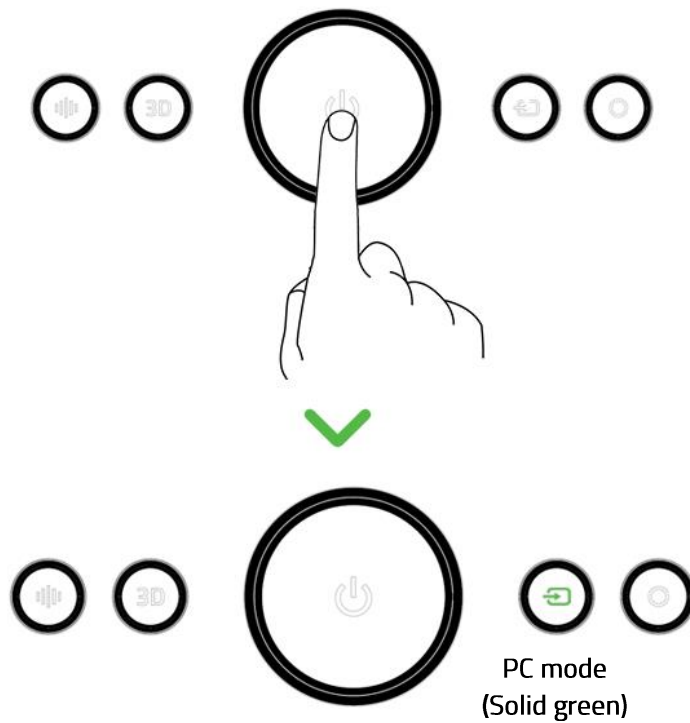
- Use the appropriate power cord for your region when plugging a power cord into the soundbar and subwoofer.
- If you detect any hazard risk on the soundbar or subwoofer, immediately unplug the power cord from the power outlet.

---

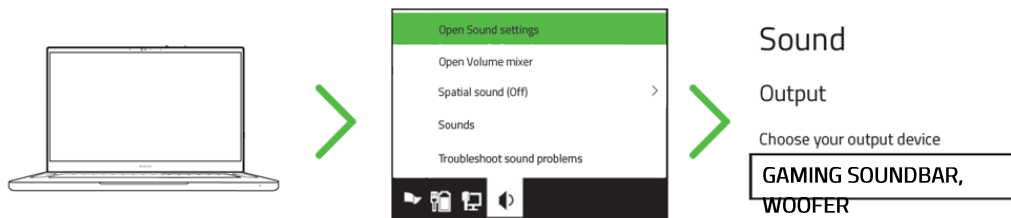
## CONNECTING TO YOUR SOUNDBAR

### VIA PC MODE

1.

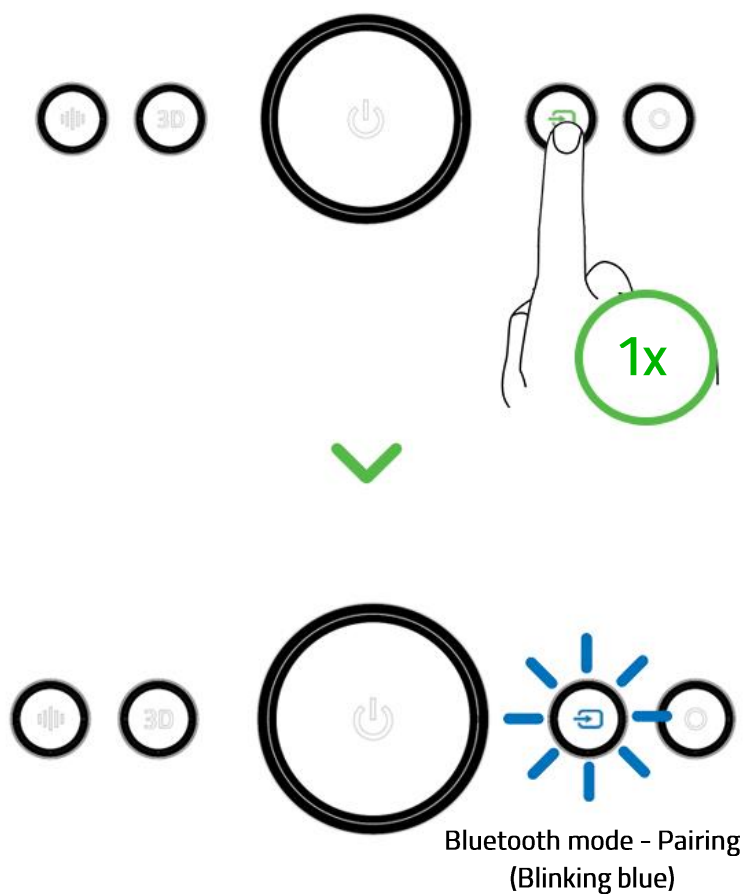


2.



## VIA BLUETOOTH MODE

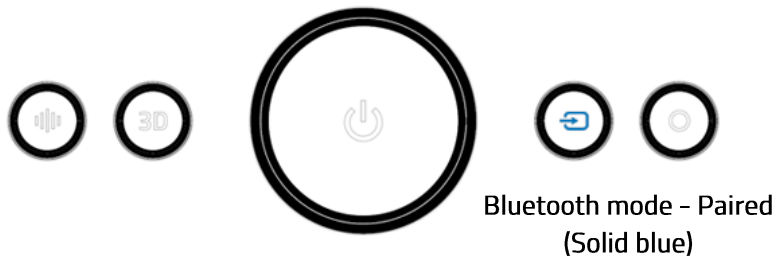
1.



2.



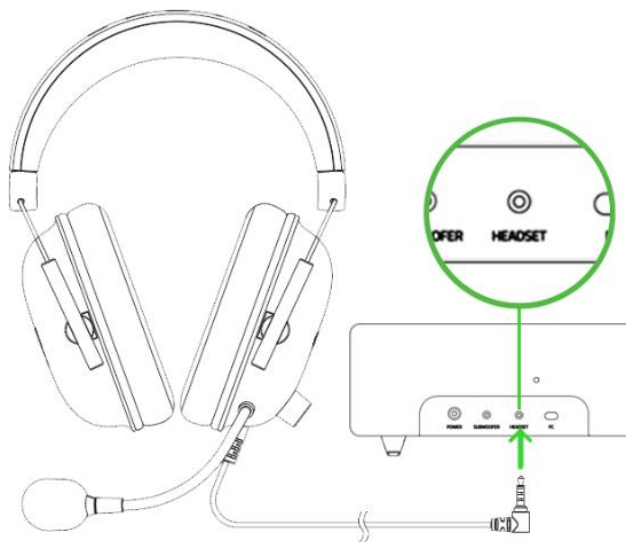




! *Instructions are for first-time pairing only. When connecting to your Razer product, remember to keep it within 1 meter of your mobile device.*

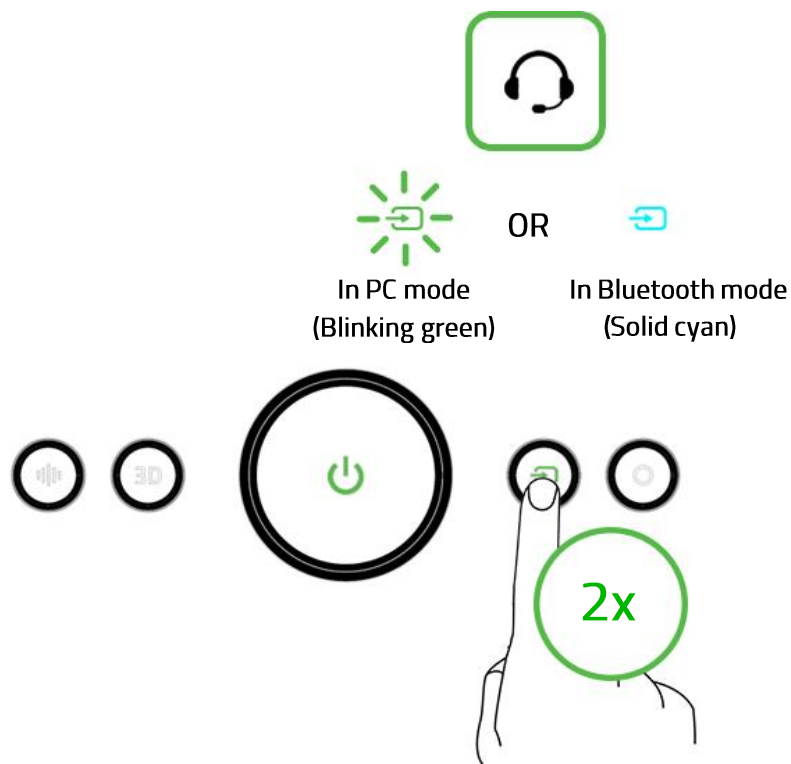
## VIA HEADSET PORT (HEADSET OUTPUT)

1.



! *Razer headset sold separately.*

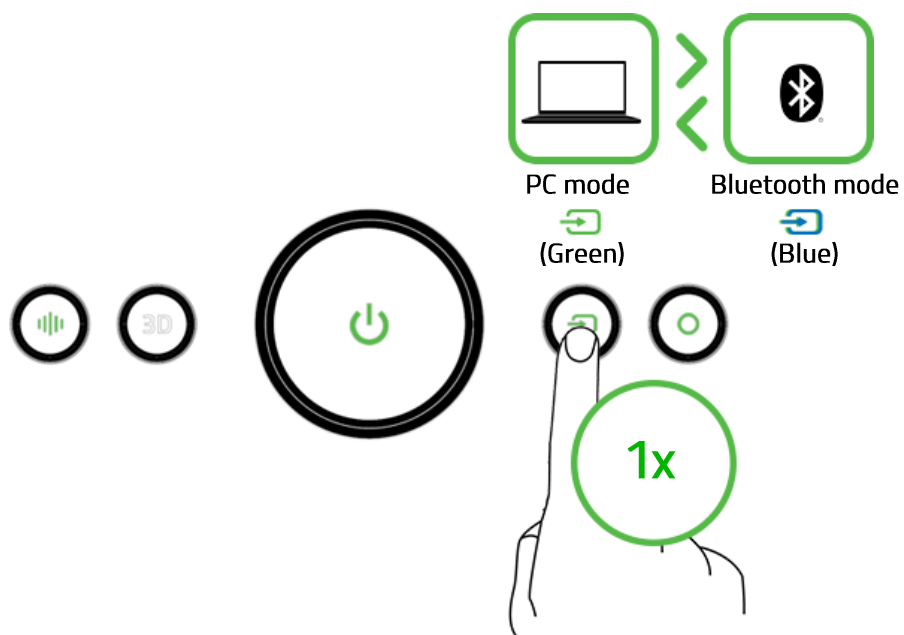
2.



- ! This feature is available in both PC and Bluetooth modes. When the soundbar is set to Headset output, it will continue using the connected headset as the audio output even as you switch between PC and Bluetooth mode. To use the connected headset as an audio input device, ensure the GAMING SOUNDBAR, WOOFER is set as your system's input device.

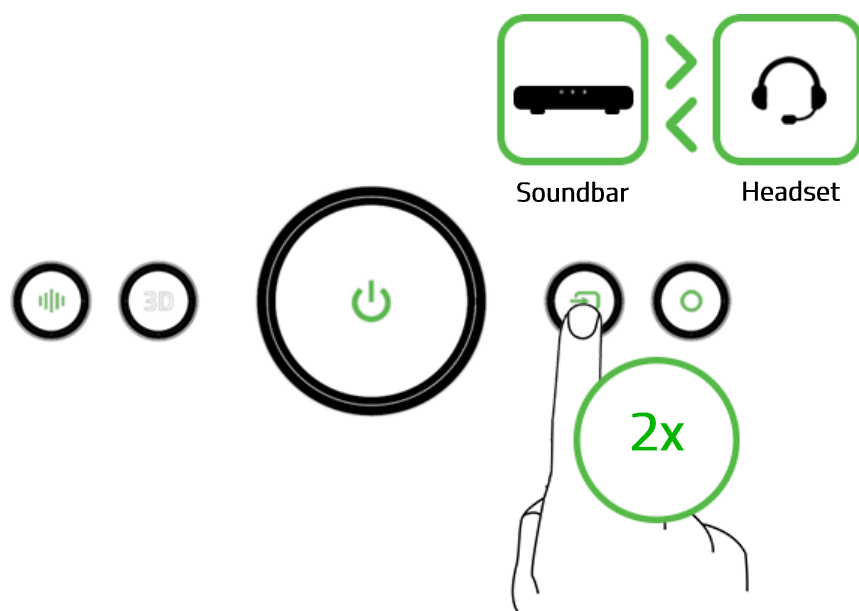
## USING YOUR SOUNDBAR

### SWITCHING BETWEEN SOUNDBAR MODES



*When switching to Bluetooth mode, your soundbar will automatically reconnect to the last known device or enter pairing mode if there's no device found.*

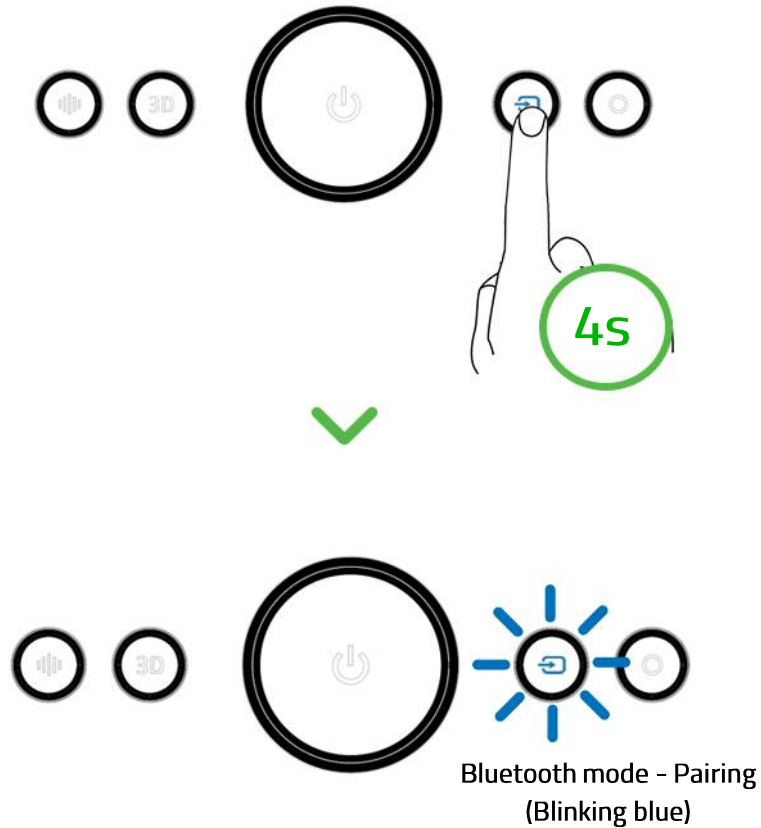
### SWITCHING BETWEEN AUDIO OUTPUTS



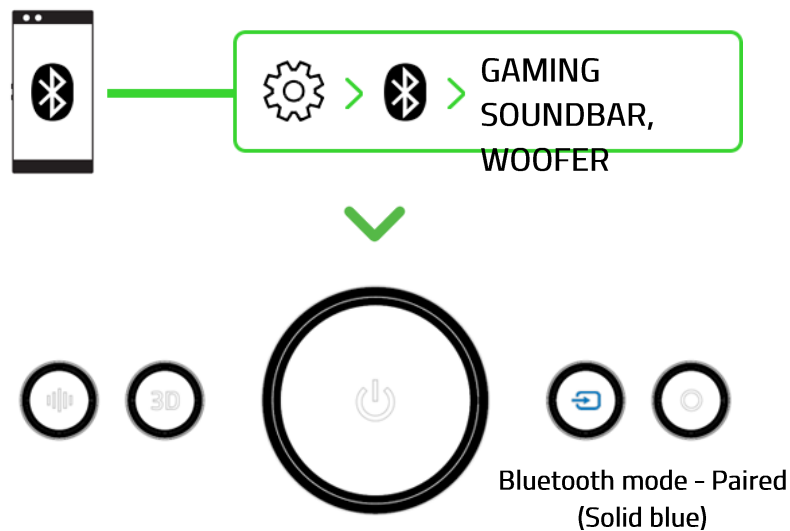
## REACTIVATING BLUETOOTH PAIRING MODE (FOR NEW DEVICES)

**i** Bluetooth pairing mode can only be reactivated from Bluetooth mode.

1.



2.



Find out more about your next-gen sound system at [support.razer.com](https://support.razer.com)


---

## PERSONALIZE YOUR EXPERIENCE

### PC

#### Razer Synapse\*

Customize the soundbar's audio mode, EQ settings, Chroma lighting effect, and fine-tune other advanced features for an immersive audio experience that's genuinely yours.

 *Install Razer Synapse when prompted or download the installer from [razer.com/synapse](https://razer.com/synapse).*

#### THX® Spatial Audio\*

Unleash the full potential of the GAMING SOUNDBAR, WOOFER by enabling 360° positional audio for a natural and lifelike experience through Razer Synapse.



*\*Only available on Windows® 10 64-bit (or higher).*

### MOBILE DEVICES

#### Razer Audio app

Customize the soundbar's EQ settings and audio mode, conveniently toggle between connected audio devices, and even experience full RGB lighting customization from your mobile device.



Razer Audio



OR



RZR.TO/AUDAPP  
(For China only)

 *Only available on iOS 13 / Android 10 (or higher) devices with Bluetooth 5.0 connectivity*

---

## SAFETY AND MAINTENANCE

### SAFETY GUIDELINES

To achieve maximum safety while using your GAMING SOUNDBAR, WOOFER, we suggest that you adopt the following guidelines:

- Should you have trouble operating the device properly and troubleshooting does not work, unplug the device and contact the Razer hotline or go to [support.razer.com](https://support.razer.com) for assistance.
- Do not take apart the device and do not attempt to operate it under abnormal current loads. Doing so will void your warranty.
- Keep the device away from liquid, humidity, or moisture. Operate the device only within the specific temperature range of 0°C (32°F) to 40°C (104°F). Should the temperature exceed this range, unplug and/or switch off the device to let the temperature stabilize to an optimal level.
- Listening to excessively loud volumes over extended periods can damage your hearing. Furthermore, legislation of certain countries permits a maximum sound level of 86db to affect your hearing for 8 hours a day. Therefore, we recommend you reduce the volume to a comfortable level when listening for prolonged periods. Please, take good care of your hearing.

### MAINTENANCE AND USE

The GAMING SOUNDBAR, WOOFER requires minimum maintenance to keep it in optimum condition. Once a month, we recommend you unplug all connected cables from the soundbar and the subwoofer and clean each component using a soft cloth or cotton swab to prevent dirt buildup. Do not use soap or harsh cleaning agents.

---

## LEGALESE

### COPYRIGHT AND INTELLECTUAL PROPERTY INFORMATION

©2022 Razer Inc. All rights reserved. Razer, the triple-headed snake logo, Razer logo, "For Gamers. By Gamers.", and "Razer Chroma" logo are trademarks or registered trademarks of Razer Inc. or affiliated companies in the United States and other countries. All other trademarks are the property of their respective owners.

Android, Google, Google Logo, Google Play, and the Google Play logo are registered trademarks of Google LLC.

Apple, the Apple logo, and iPhone are trademarks of Apple Inc., registered in the U.S. and other countries. App Store is a service mark of Apple Inc. iOS is a trademark or registered trademark of Cisco in the U.S. and other countries and is used under license.

The Bluetooth® word mark and logos are registered trademarks owned by Bluetooth SIG, Inc., and any use of such marks by Razer is under license.

THX and the THX Logo are the property of THX Ltd., registered in the U.S. and other countries.

Windows and the Windows logo are trademarks of the Microsoft group of companies.

Razer Inc. ("Razer") may have copyright, trademarks, trade secrets, patents, patent applications, or other intellectual property rights (whether registered or unregistered) concerning the product in this guide. Furnishing of this guide does not give you a license to any such copyright, trademark, patent or other intellectual property right. The GAMING SOUNDBAR, WOOFER (the "Product") may differ from pictures whether on packaging or otherwise. Razer assumes no responsibility for such differences or for any errors that may appear. Information contained herein is subject to change without notice.

### LIMITED PRODUCT WARRANTY

For the latest and current terms of the Limited Product Warranty, please visit [razer.com/warranty](https://www.razer.com/warranty).

### LIMITATION OF LIABILITY

Razer shall in no event be liable for any lost profits, loss of information or data, special, incidental, indirect, punitive or consequential or incidental damages, arising in any way out of distribution of, sale of, resale of, use of, or inability to use the Product. In no event shall Razer's liability exceed the retail purchase price of the Product.

## GENERAL

These terms shall be governed by and construed under the laws of the jurisdiction in which the Product was purchased. If any term herein is held to be invalid or unenforceable, then such term (in so far as it is invalid or unenforceable) shall be given no effect and deemed to be excluded without invalidating any of the remaining terms. Razer reserves the right to amend any term at any time without notice.



## FCC Compliance Statements

This device complies with Part 15 of the FCC Rules. Operation is subject to the following two conditions: (1) this device may not cause harmful interference, and (2) this device must accept any interference received, including interference that may cause undesired operation.

Note: This equipment has been tested and found to comply with the limits for a Class B digital device, pursuant to Part 15 of the FCC Rules. These limits are designed to provide reasonable protection against harmful interference in a residential installation. This equipment generates, uses and can radiate radio frequency energy and, if not installed and used in accordance with the instructions, may cause harmful interference to radio communications. However, there is no guarantee that interference will not occur in a particular installation.

If this equipment does cause harmful interference to radio or television reception, which can be determined by turning the equipment off and on, the user is encouraged to try to correct the interference by one or more of the following measures:

- Reorient or relocate the receiving antenna.
- Increase the separation between the equipment and receiver.
- Connect the equipment into an outlet on a circuit different from that to which the receiver is connected.
- Consult the dealer or an experienced radio/TV technician for help.

Caution: Changes or modifications not expressly approved by the party responsible for compliance could void the user's authority to operate the equipment.

This equipment complies with FCC radiation exposure limits set forth for an uncontrolled environment. This transmitter must not be co-located or operating in conjunction with any other antenna or transmitter. This equipment should be installed and operated with minimum distance 20cm between the radiator and your body.

Razer Inc.  
9 Pasteur, Suite 100, Irvine, CA 92618, USA  
+1(949) 655-8888  
mysupport.razer.com

## ISED Compliance Statements

This device contains licence-exempt transmitter(s)/receiver(s) that comply with Innovation, Science and Economic Development Canada's licence-exempt RSS(s). Operation is subject to the following two conditions:

- (1) This device may not cause interference.
- (2) This device must accept any interference, including interference that may cause undesired operation of the device.

This equipment complies with IC RSS-102 radiation exposure limits set forth for an uncontrolled environment. This equipment should be installed and operated with minimum distance 20cm between the radiator and your body.

L'émetteur/récepteur exempt de licence contenu dans le présent appareil est conforme aux CNR d'Innovation, Sciences et Développement économique Canada applicables aux appareils radio exempts de licence. L'exploitation est autorisée aux deux conditions suivantes :

- (1) L'appareil ne doit pas produire de brouillage;
- (2) L'appareil doit accepter tout brouillage radioélectrique subi, même si le brouillage est susceptible d'en compromettre le fonctionnement.

Cet équipement est conforme aux limites d'exposition aux radiations IC CNR-102 établies pour un environnement non contrôlé. Cet équipement doit être installé et utilisé avec une distance minimale de 20cm entre le radiateur et votre corps.



STATEMENT OF COMPLIANCE WITH EU

DIRECTIVE

Hereby, Razer (Europe) GmbH, declares that this Gaming Soundbar Model: RZ05-0416 and Subwoofer Model: RC30-0416) and is in compliance with the essential requirements and other relevant provisions of Directive 2014/53/EU and 2015/865/EU.

[Gaming Soundbar]

Radio Frequency: Bluetooth

Frequency Band: 2402 - 2480MHz

RF Power: < 8dBm

Software/Firmware: V1.0