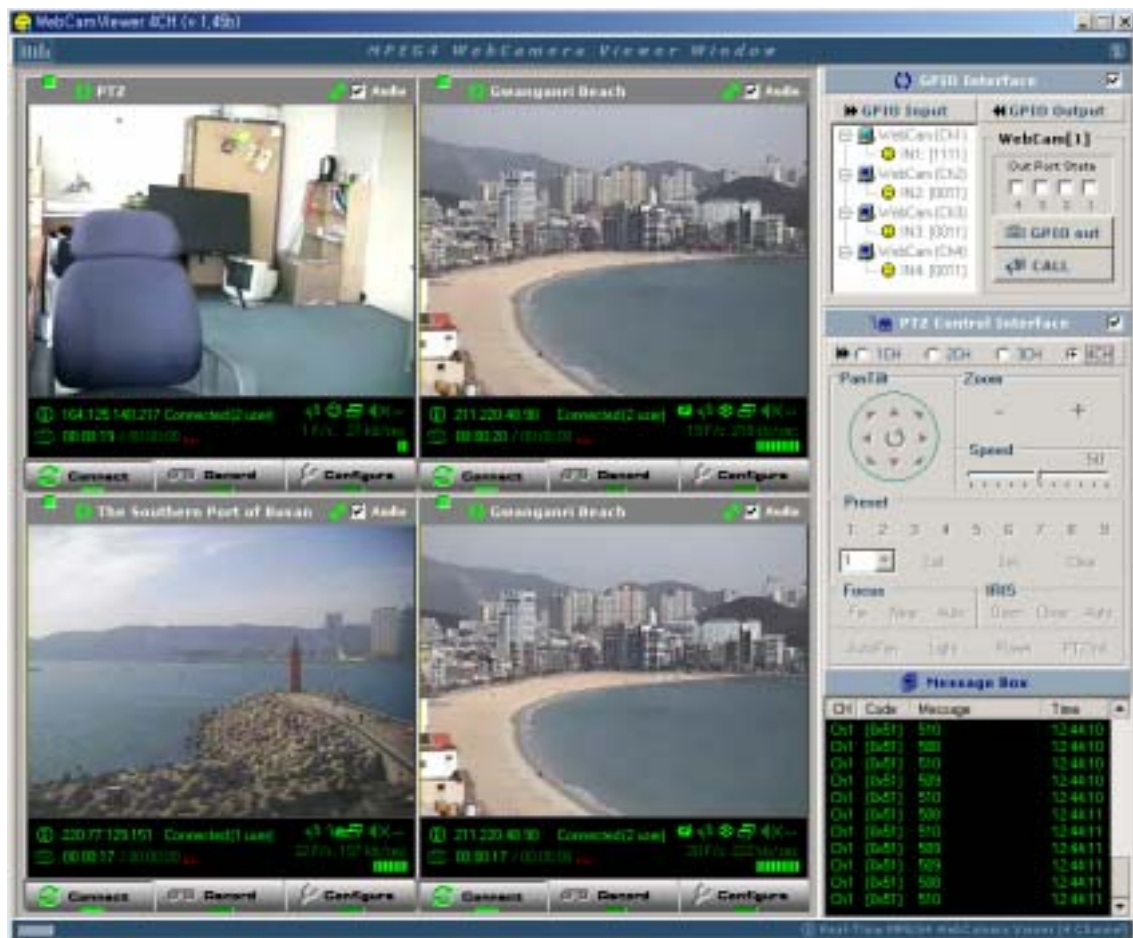


# Web Cam Viewer

## Meye-344 Software

### Manual



## **FCC NOTICE**

THIS DEVICE COMPLIES WITH PART 15 OF THE FCC RULES.  
OPERATION IS SUBJECT TO THE FOLLOWING TWO CONDITION:  
(1) THIS DEVICE MAY NOT CAUSE HARMFUL INTERFERENCE, AND  
(2) THIS DEVICE MUST ACCEPT ANY INTERFERENCE RECEIVED,  
INCLUDING INTERFERENCE THAT MAY CAUSE UNDERSIRED  
OPERATION.

This equipment has been tested and found to comply with the limits for a Class B digital device, pursuant to part 15 of the FCC Rules. These limits are designed to provide reasonable protection against harmful interference in a residential installation.

This equipment generates, uses and can radiate radio frequency energy and, if not installed and used in accordance with the instructions, may cause harmful interference to radio communication. However, there is no guarantee that interference will not occur in a particular installation. If this equipment does cause harmful interference to radio or television reception, which can be determined by turning the equipment off and on, the user is encouraged to try to correct the interference by one or more of the following measures :

- Reorient or relocate the receiving antenna.
- Increase the separation between the equipment and receiver.
- Connect the equipment into an outlet on a circuit different from that to which the receiver is connected.
- Consult the dealer of an experienced radio/TV technician for help.

NOTE : The manufacturer is not responsible for any radio or TV interference caused by unauthorized modifications to this equipment. Such modifications could void the user's authority to operate the equipment.

# **INDEX**

---

## **1. Installation**

## **2. Uninstallation**

## **3. Structure**

**Main structure**

**Structure of each viewer**

**Capture**

## **4. Play**

**Setting**

**Example of setting**

**Play the movie**

**Adjusting FPS, Data or Screen quality**

## **5. Record**

**Record**

**Configuration of Recording, Motion detection, Bi-directional Audio**

## **6. Search**

**Structure of Web Cam Player**

**Play the recorded file**

**Fast search**

**Motion**

**Motion and Fast searching**

**Capture**

## **7. PTZ control**

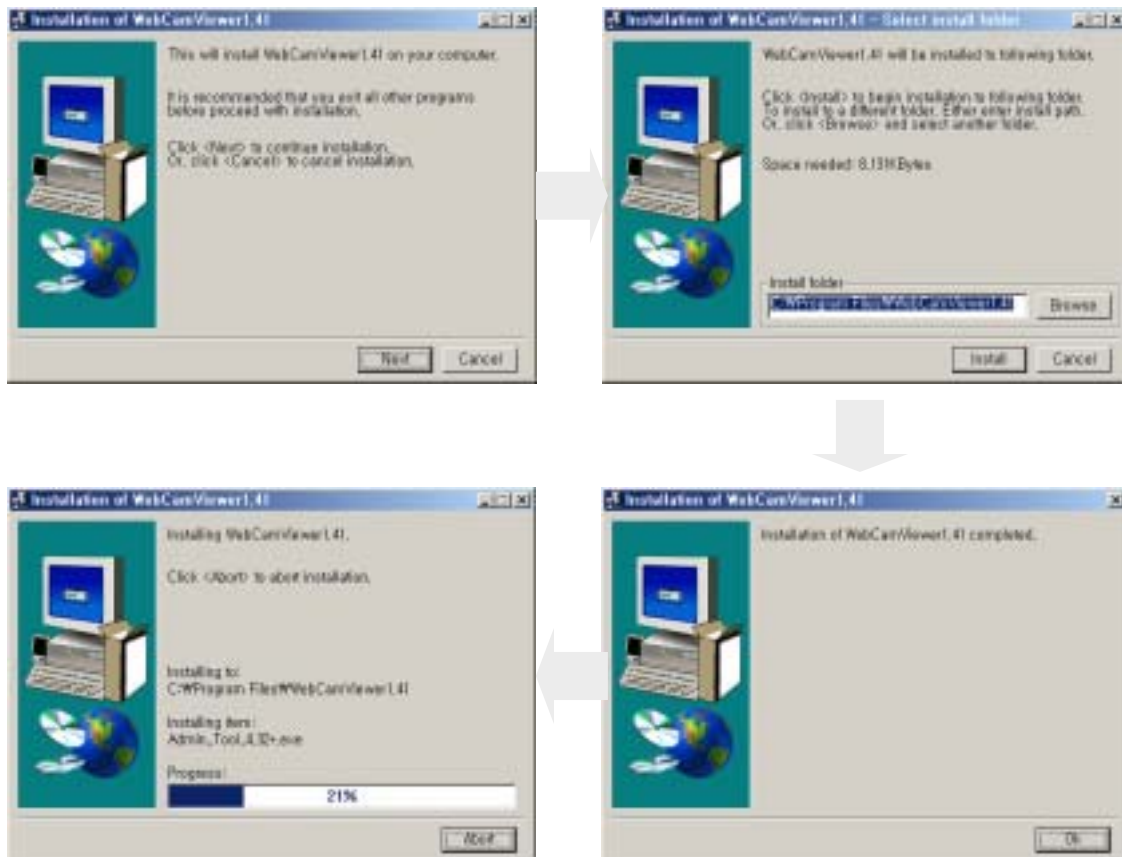
**PTZ control structure**

**Preset**

# INSTALLATION

## Installation

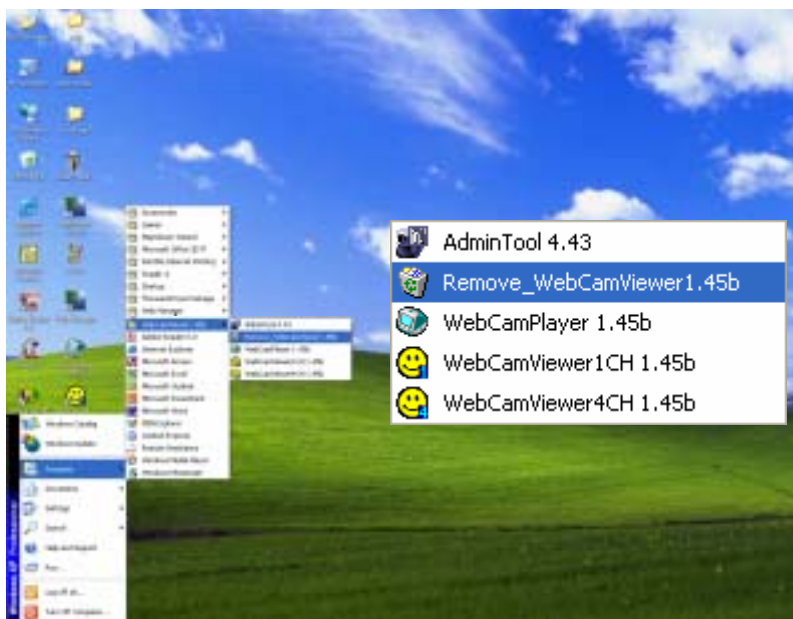
Run "WebCamViewer1.41\_Setup.exe" in the CD or downloaded to install Web Cam viewer.  
Follow the below order.



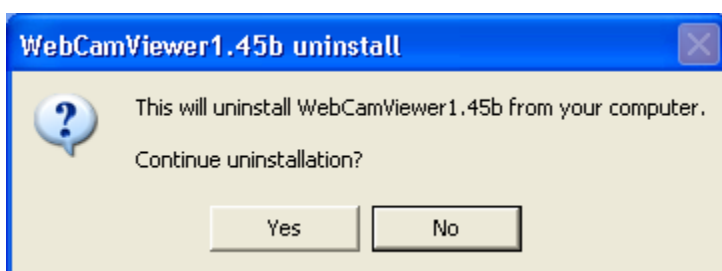
# UNINSTALLATION

---

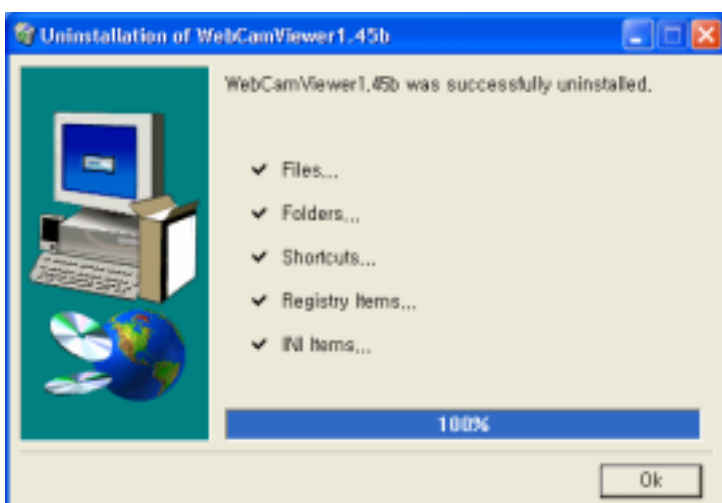
## Uninstallation



First, **click the Start icon** and **click program icon**. Then, you can find the Uninstall Web Cam viewer icon, and **click the Uninstall Web Cam Viewer icon**.



After you click the Uninstall icon there will be new window. If you want to keep going **click the Yes button**, otherwise click the No button.

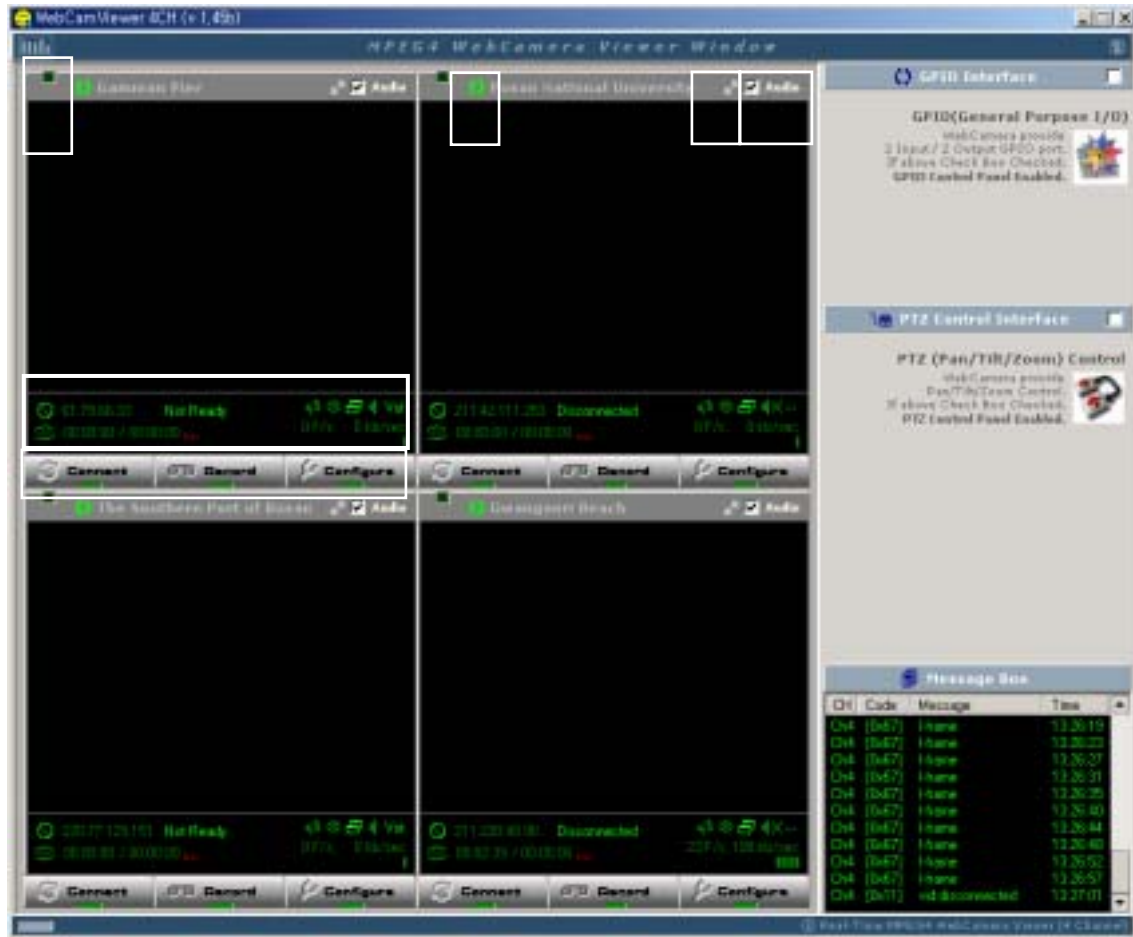


After you click yes button, you can see the right window. It shows the progress of uninstallation. After all process **click OK button**.

# STRUCTURE

## STRUCTURE

### Main Structure



1. **Main viewer:** This is for see the movie.
2. **Indication window of connecting status:** It shows the camera information when users connect to camera, (IP, connecting status, volume, number of frames)
3. **Setup button:** This is for setup the each information about camera, connection, and recording status.
4. **Control GPIO:** This is for control turning lamp on/off and opening/closing of door.
5. **PTZ Controller:** Control the camera direction.
6. **Message Box:** It shows the connected status.
7. **On/Off:** It shows whether camera is connecting or disconnecting.
8. **Buffering Control:** It controls Buffering time. (0~5 sec)
9. **Channel changing icon:**
10. **Audio selection:**

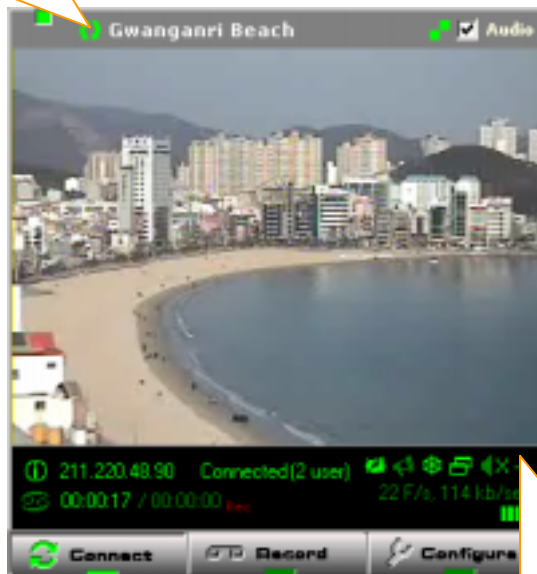
# STRUCTURE

## Structure of each viewer

Web Cam Viewer is consisted of 4 viewers.

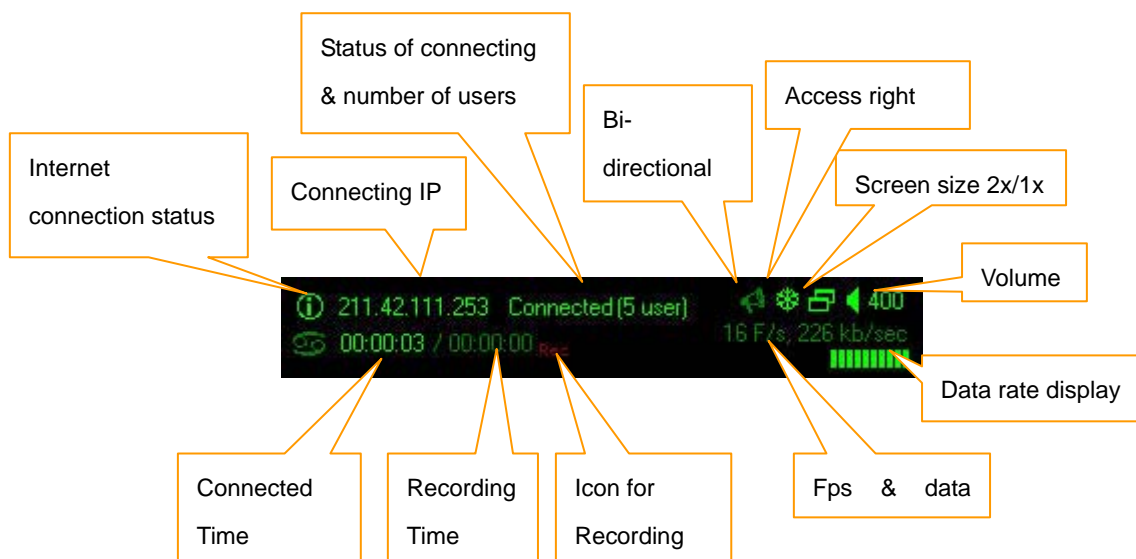
### Control buffering

: Between 0~5sec



### Control volume

: Between 0~400





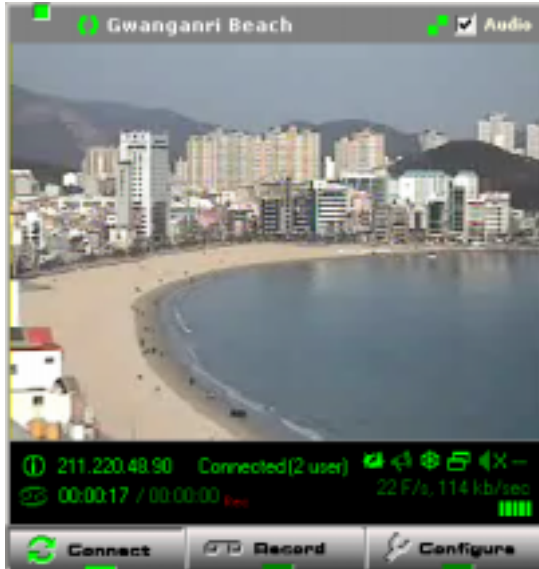
# STRUCTURE

---

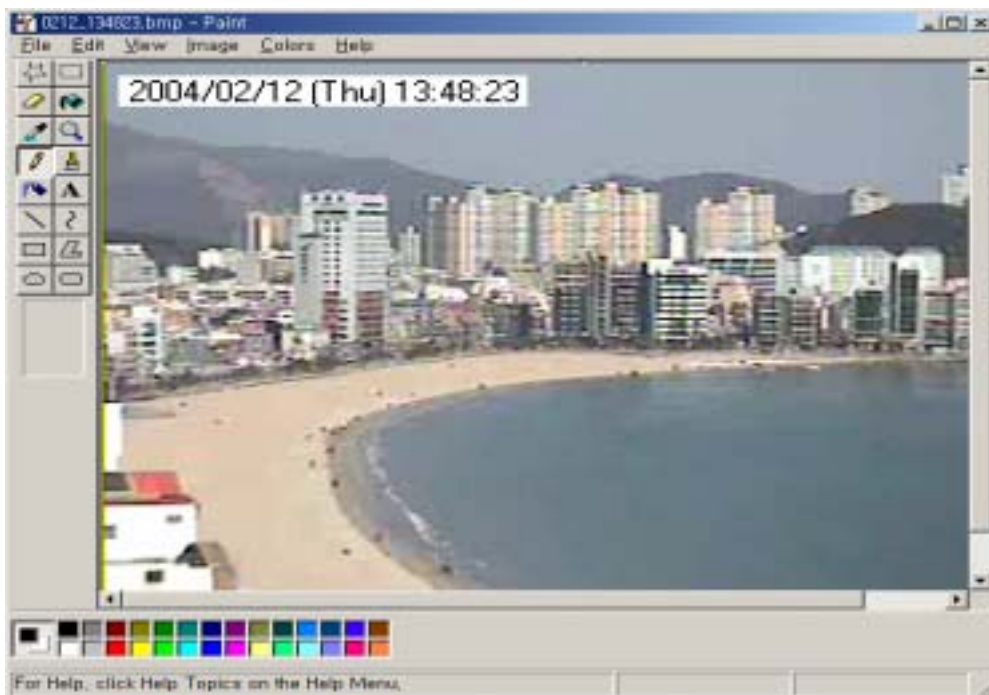
## Capture

Users can capture a picture while the movie is playing

Click the **capture button**. Then you can see the drawer board.



AT the drawer board users can save, print, edit and so on.





# PLAY

## PLAY

### Setting

Before playing the movie you must set all information of camera, IP address, port number, Channel and so on.

To access setting menu click the configure button.



Then users can see the below window.

This is for setting the information that is related camera.

indication window of Channel information

Input all information about the camera that users will reach.

Save/ Edit/ Add/ Delete button

Address window

**Setting status**  
(changing automatically)  
Configure CH [1]  
Configure CH [2]  
Configure CH [3]  
Configure CH [4]

**Setting status**  
(Changing automatically)  
- Disconnect  
- Admin  
- User

# PLAY

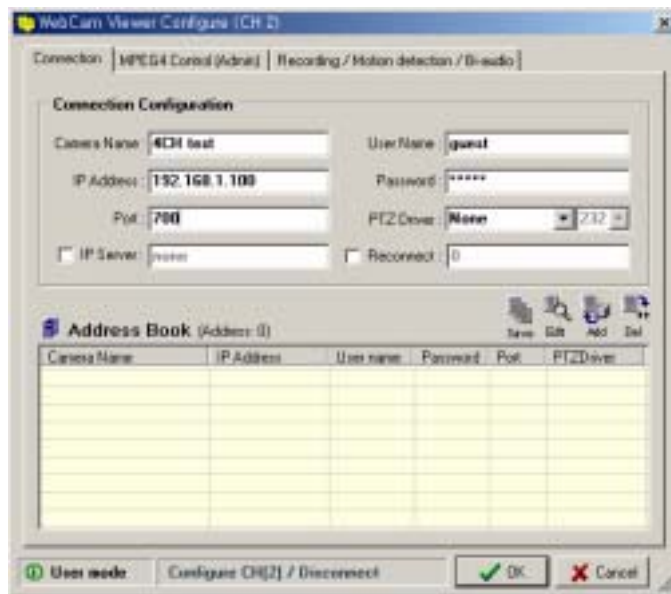
## Example of camera setting

### In case of static IP

First click the Configure button.



Then you can see the below window..



Put into all information about the camera that users want to reach in the Connection Configuration section.

Connection Configuration	
Camera Name :	4CH test
User Name :	guest
IP Address :	192.168.1.100
Password :	*****
Port :	700
PTZ Driver :	None 232
<input type="checkbox"/> IP Server :	none
<input type="checkbox"/> Reconnect :	0

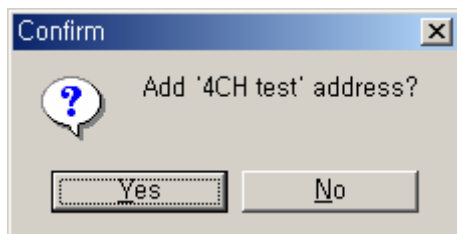
	Explanation
Camera name	Set the camera name.
IP address	Input IP address which is assigned to camera
Port	Input Default port
User Name& Password	[Default value] root / root (for Admin), guest / guest (for Guest)
PTZ Driver	Select an appropriate protocol for the PTZ camera.

## PLAY

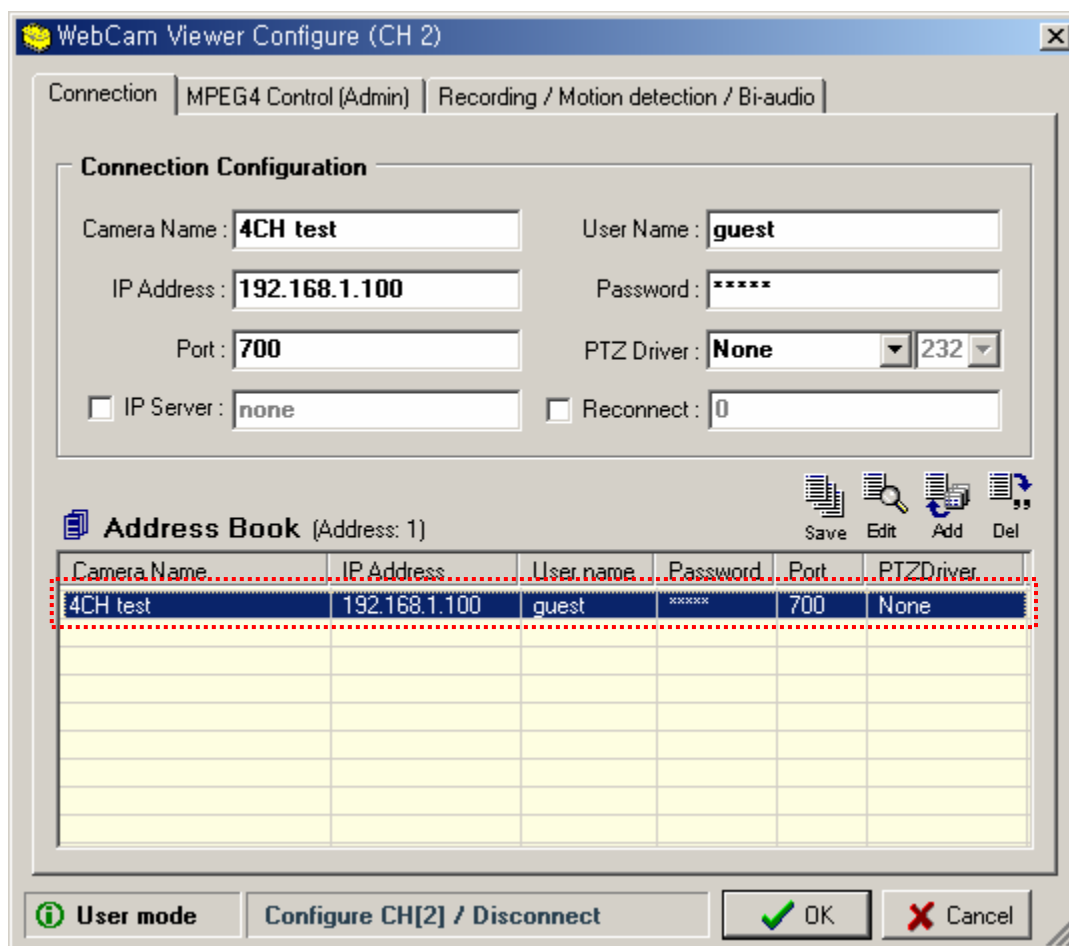


After putting into all information **click the Add button**

Then you can see the Confirm window. **Click the Yes button.**



After all these process, the added list will be shown in the Address Book section.



### Note

Don't check the IP server.

# PLAY

## In case of Dynamic IP

You must set at the Admin\_tool, before setting at the Web Cam Viewer configuration.

(Refer to Admin\_Tool Manual)

**IP Server**  
**Enable** : Use IP Server  
**Disable** : Do not use IP Server.

**Setting a IP server**  
Input IP Address for IP Server.  
**(Server IP Address should be a static IP.)**  
Port of Video Server [Decimal] : Input port # for IP server

**Change Click**  
Apply the changed setting.

**Set the updating period of camera IP Information**

**Get Info. Click**  
Show current setting of the camera

The screenshot shows a configuration window titled 'Web Cam Viewer'. It has several sections: 'Enable / Disable' with 'Enable' selected; 'Server Info' with IP address fields (192, 168, 1, 101) and a port field (2780); 'Update Period' with a field set to 1 minute; and a 'Control Box' with 'Get Information' and 'Change Setting' buttons. Red dashed boxes and callout lines connect these elements to the surrounding text blocks.

## Notice

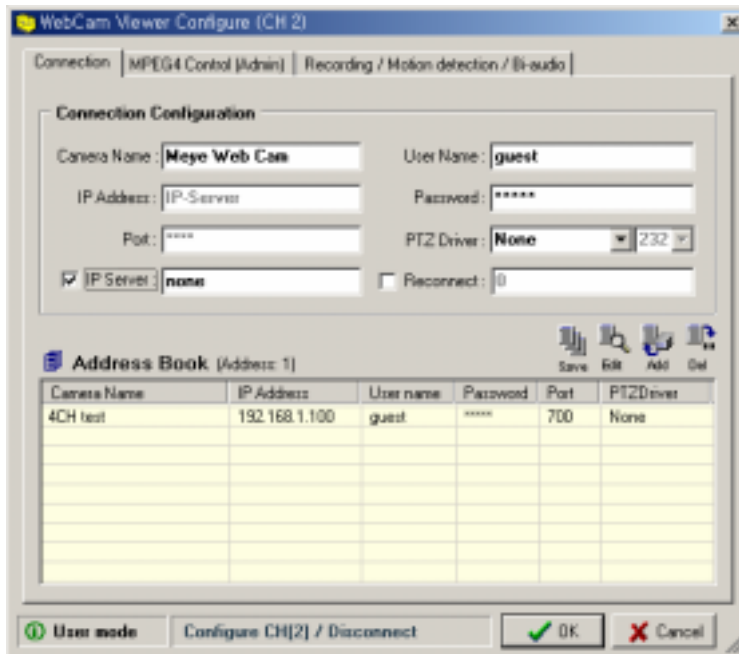
The IP address of camera will be registered automatically into IP server when IP server setting is finished in the Admin tool.

## PLAY

After setting at the Admin\_Tool about Dynamic IP, **click the Configuration button** in which Web Cam Viewer main screen.



Then you can see the below window.



**Input all information about the camera** that users want to reach in the Connection Configuration section, and **check the IP sever**.

**Connection Configuration**

Camera Name :  User Name :

IP Address :  Password :

Port :  PTZ Driver :

☒ IP Server :  ☐ Reconnect :

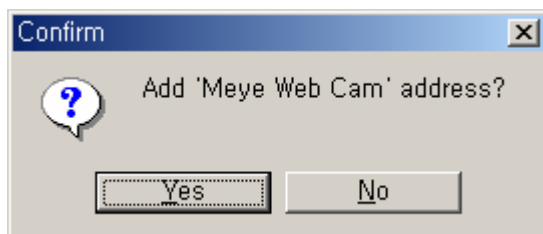
	Explanation
<b>Camera name</b>	Set the camera name and it should be matched to the one is registered in admin tool
<b>IP Sever</b>	Input IP address of IP server Ex) 164.125.141.12 (IP server which is run by MI.)
<b>Port</b>	Input Default port
<b>User Name&amp; Password</b>	[Default value] root / root (for Admin), guest / guest (for Guest)
<b>PTZ Driver</b>	Select an appropriate protocol for the PTZ camera.

## PLAY

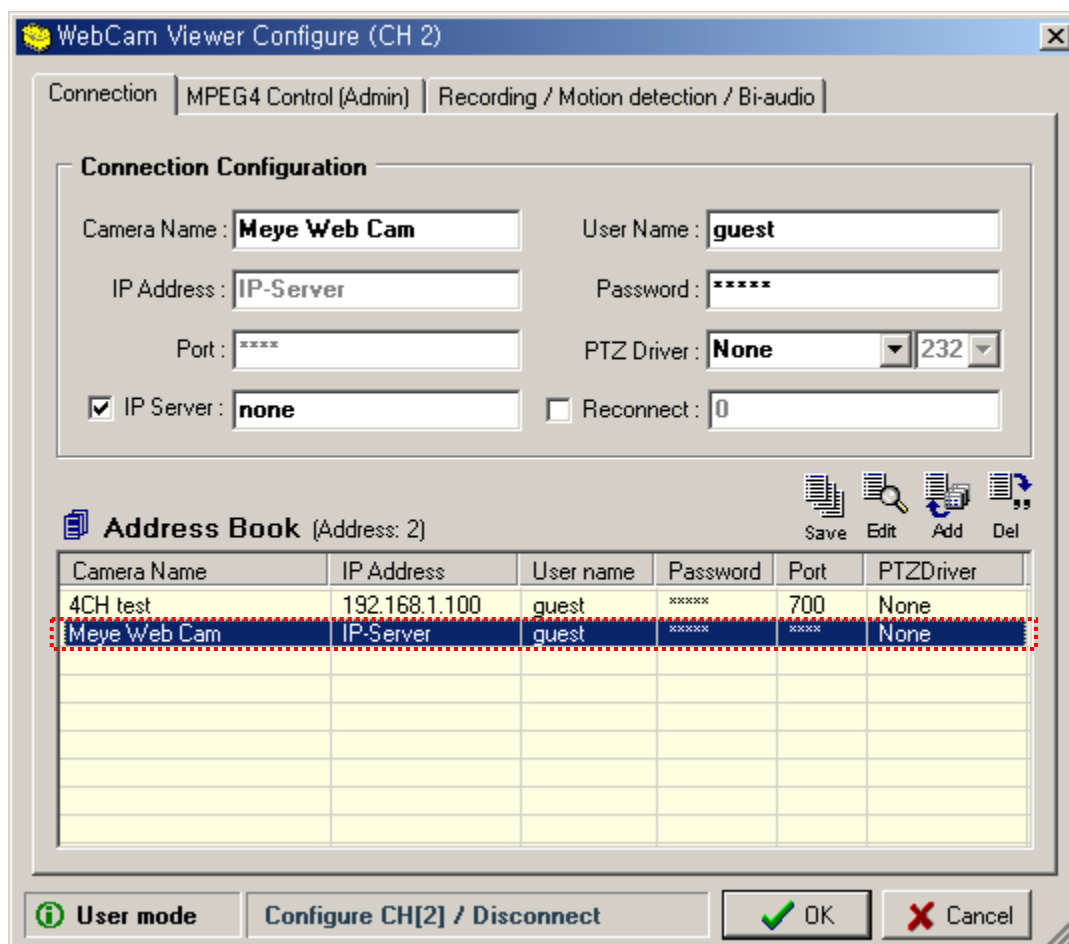


After putting into all information **click the Add button**

Then you can see the Confirm window. **Click the Yes button.**



After all these process, the added list will be shown in the Address Book section.



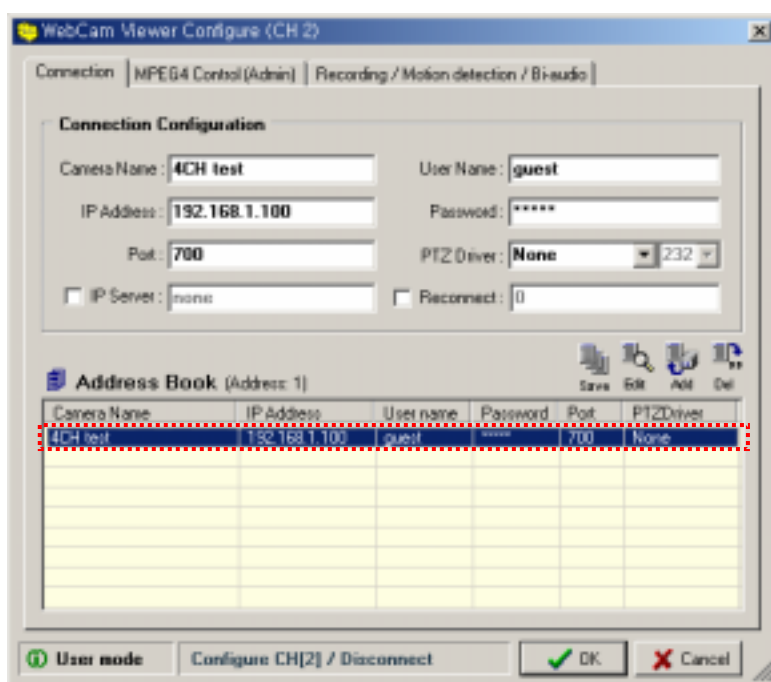
## PLAY

### Play the movie

After you register camera information, you can connect the camera and see the movie on Web Cam viewer screen.

First **check the camera** that users want to connect which is in the Address Book list.

Second **click the OK button**. Then the Webcam Viewer Configuration window will be disappeared.



Third **click the connect icon**.

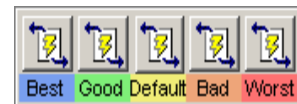
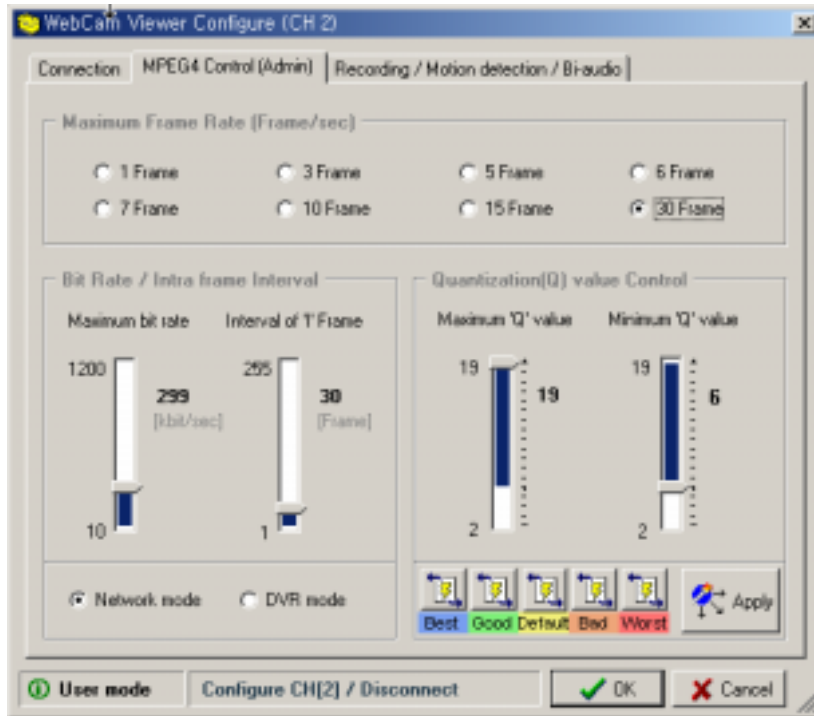




## PLAY

### Adjusting FPS (Frame per Second), Data or Screen quality

This mode is for setting transmits frames, bit rate, and image quality that are related the playing the movie. To access this mode **click the configuration button** and **click the MPEG4 Control (Admin)**



These buttons make set all value depending on network speed.

**Maximum Frame Rate:** It is for setting the number of frames that is showing on screen per second.

**Bit Rate/Infra Interval:** Network transmits.

Set the amount of transmit in order to adopt the network speed.

- Maximum bit rate
- Interval of Y Frame
- Network bit rate

**Quantization value Control:** This is for setting the image quality.

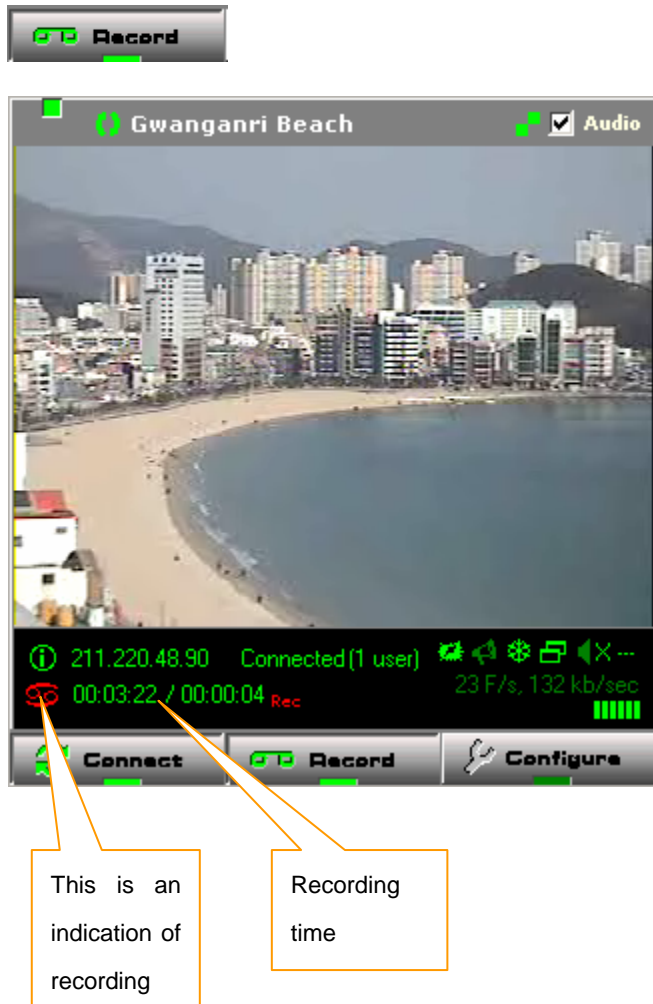
#### Note

If you don't have the specific knowledge, we recommend that don't use this function.

# RECORD

## RECORD

To record movie just click the Record button. The recording folder will be made automatically.  
(Default Folder name: Webcamrecord)



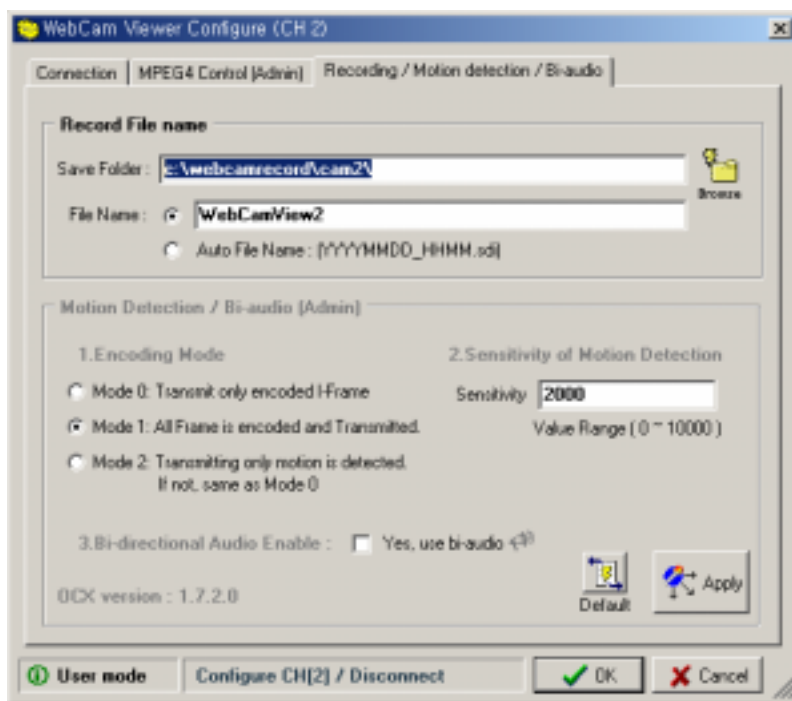
### Note

User can choose the recording fold at the Configuration of Recording, Motion detection, Bi-directional Audio.

## RECORD

### Configuration of Recording, Motion detection, Bi-directional Audio

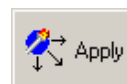
To access this mode click the **configuration button**, and then click the **Recording, Motion detection, Bi-directional Audio button**.



This button is for select the folder location.



Click the Default button, to change the default value.



This button is for applying the set value.

#### Record File name

**Save Folder:** Users can choose the saving folders at here.

**File Name:** Type the name of the file that users will save by yourselves.

(Auto File Name: if users check this function, the file name will be created automatically)

#### Motion Detection/ Bi-audio Admin

- 1. Encoding Mode:** Choosing the encoding mode depend on the situation.
- 2. Sensitivity of Motion Detection:** This is for setting the moving detection sensitivity.  
(The Lower value is the more sensitive.)
- 3. Bi-direction Audio Enable:** When users use this function, just check it.

#### Note

You can change the setting only when you connect by the authority of Admin.

# SEARCH

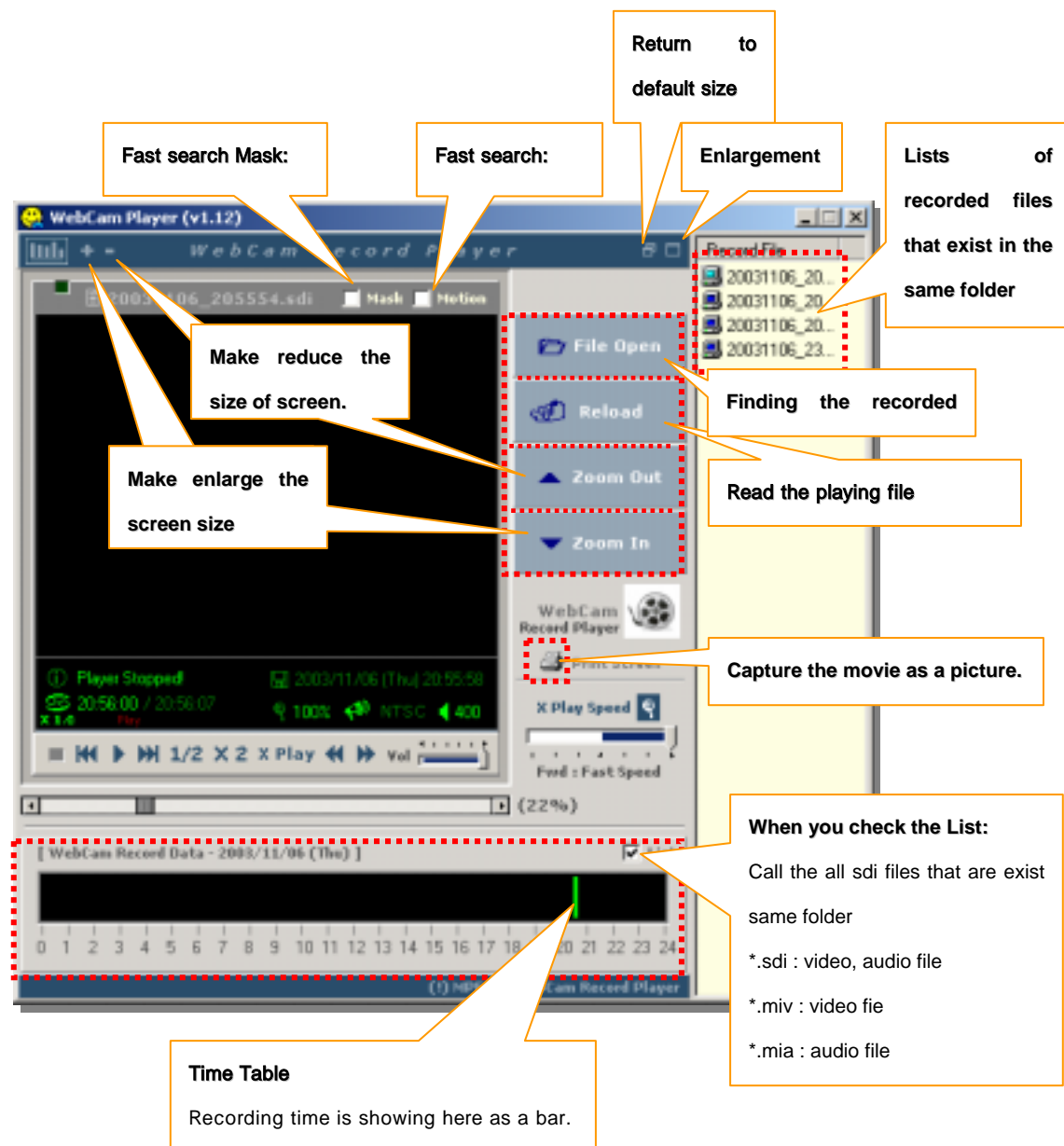
## SEARCH

### Structure of Web Cam Player

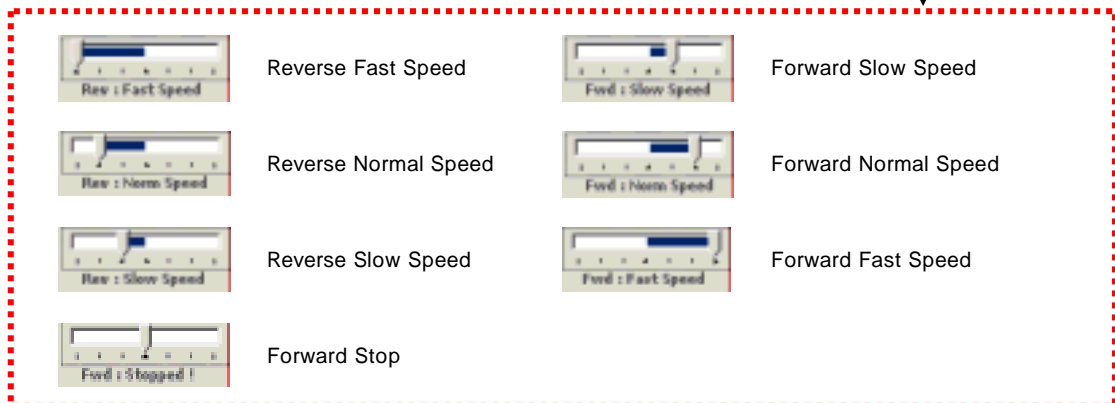
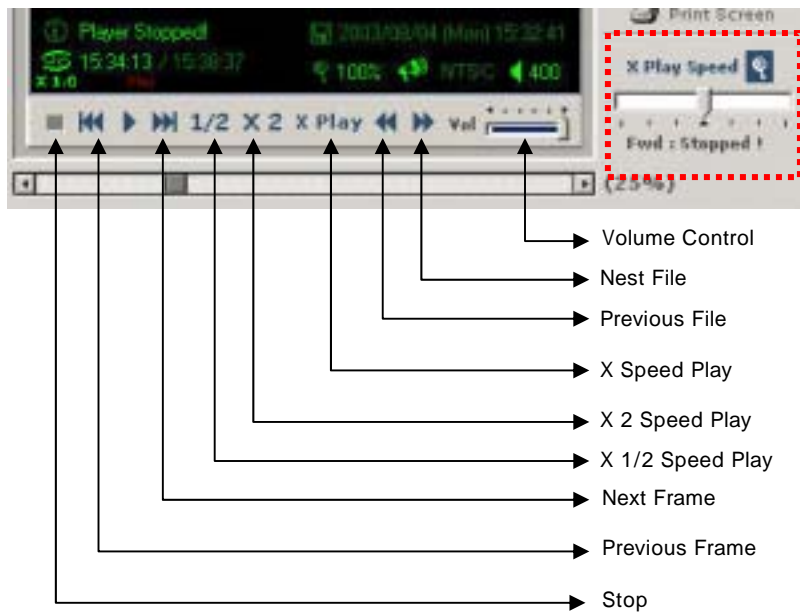
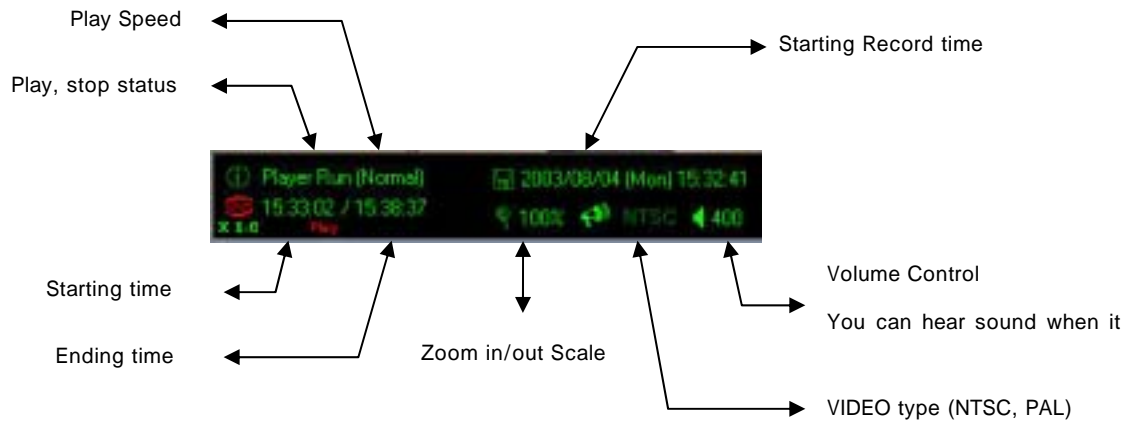
When users want to open the recorded file, you can not open at the Web Cam viewer, but at the Web Cam player. To access Web Cam player **double click the Web Cam player icon**.



Then users can see the below window.



# SEARCH



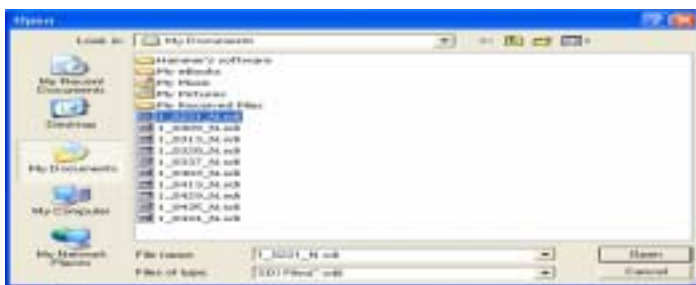
---

## Play the recorded file

To play recorded file **click the file open button**. Then the file list will be shown.



**Select the file** that users want to open, and then **click the open button**.



The selected file information will be shown on the indication section.

**Click the play button**, the movie will play.

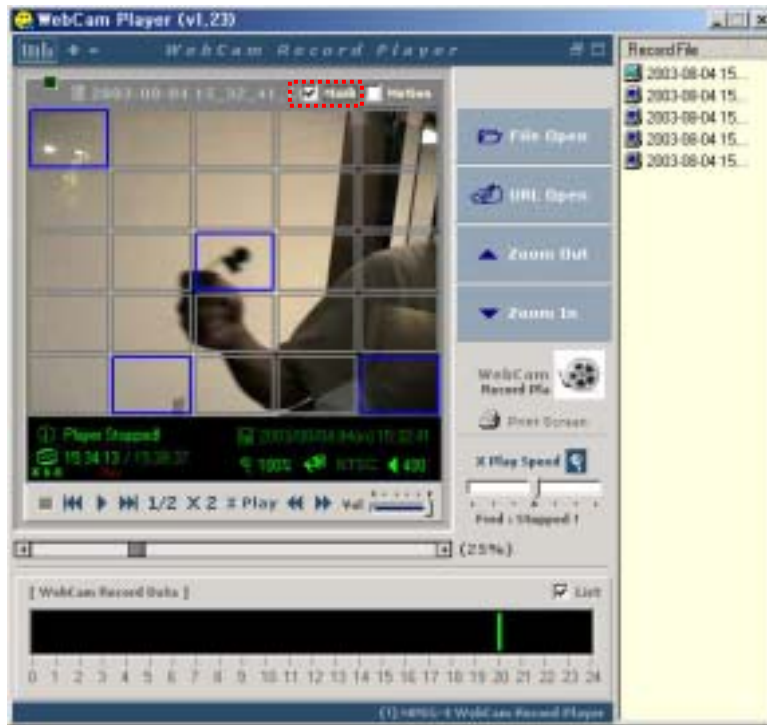


# SEARCH

## Fast search

This function is for reducing the searching time, when you search the specific point or movement of core things.

First **check the Mask** as stop the playing. Then there will be a gray section. Second **choose the sections** that you want to use the quick searching. After choosing, **click the play button**.



## Motion

If there are any movements, the rectangle color will be changed to red. This is very useful that to know which parts are happening the motion.

To use this function **click the Motion**.





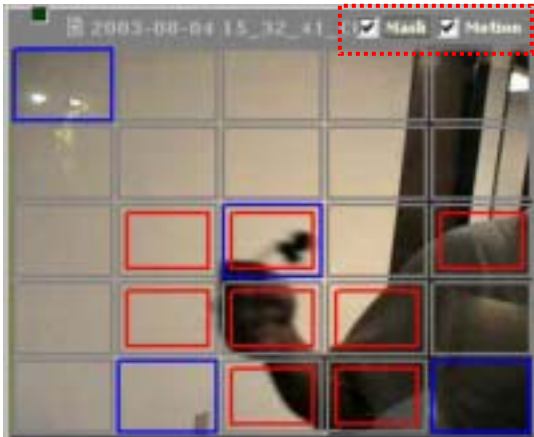
## SEARCH

---

### Motion and Fast searching. .

When you choose Mask and Motion, fast search will be operated showing the motion's occur area.

To use this function **click the Mask and Motion.**



#### Notice

Users must stop the playing movie, when you set the Mask and the Motion. Otherwise it doesn't work.

## SEARCH

### Capture

You can capture a picture while movie is playing. Click the **Print Screen** button.



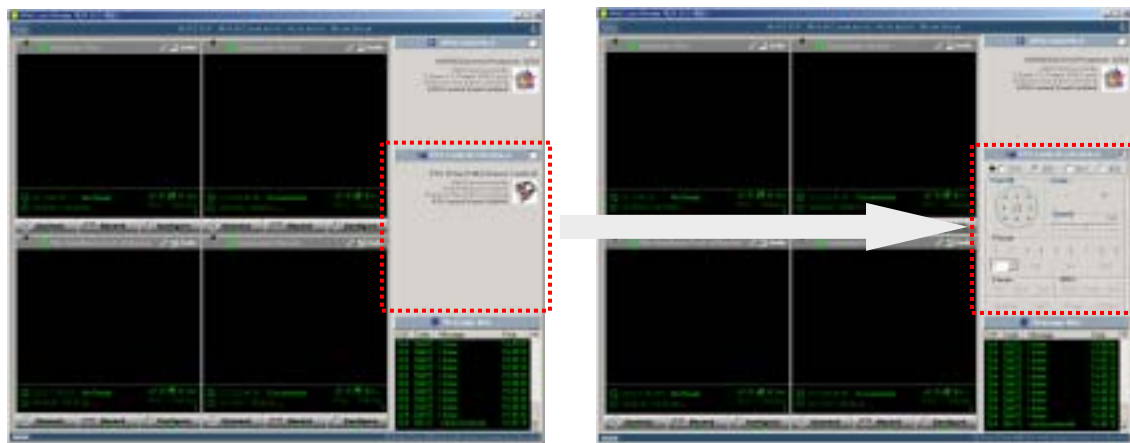
Then the picture will be captured as below.



## PTZ (Pin/Tilt/Zoom)

### PTZ (Pin/Tilt/Zoom)

To using the PTZ control converts the PTZ control interface as checking it.



**Channel:**

Select the viewer's channel.

**Pan Tilt:**

Control the camera direction.

**Preset:**

This makes the camera move to the set point.

**Focus:**

Control the focus

**Zoom:**

It controls Zoom In/out

**Speed:**

It controls the PTZ speed.

**IRIS:**

It controls the iris of camera lens.

**Auto Pan:** control the auto pan

**Light:** control the night light

**Power:** control the camera power on/off.

**PTZInit:** initialization PTZ drive

## PTZ (Pin/Tilt/Zoom)

---

### Preset

When users detect one area more correctly and specially, use this function. Set the one point that users want to see and detect more correctly and specially, then whenever you want to see that point just click the number.

### The example making the Preset

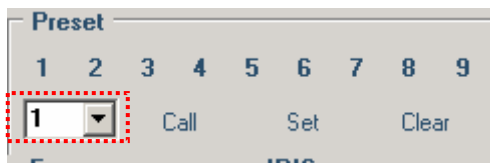
There are two options to make the Preset. One is using the Set and another is Set Start. This option is showing depending on PTZ driver.

#### Using the Set

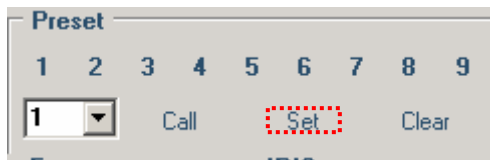
1. Move the camera that users want to save.



2. Select the number that users want to save.



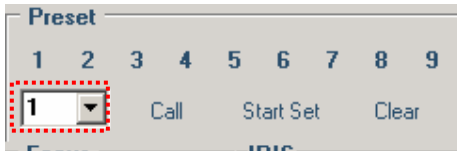
3. Click the Set button.



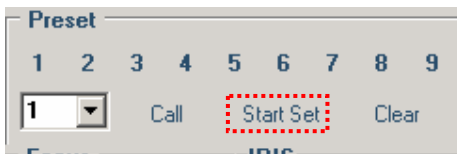
## PTZ (Pin/Tilt/Zoom)

### Using the Set Start

1. Select the number to save



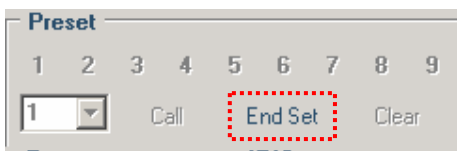
2. Click the "Start Set" button (After you click the Start Set button, it will be changed to End Set)



3. Move the camera one point that users want to save.



4. Click the Stat Set button again.



### Preset call

When users use the Preset function, **select the number** and **click the call button**. Then the camera will move to the set point.

### Preset clear

When users want to clear the Preset, **select the number** and **click the Clear button**. Then it will be cleared.

## Technical Specification

---

### Meye314

Video	Input : NTSC / PAL Resolution : 320 X 240, 640 X 240(Optional) Compression : MPEG4, Compression rate : 200 ~ 400:1 Frame rate : Max. 30 frames/sec, Avg. 20 ~ 25 frames/sec Size per frame : 0.5 KB Number of video input : switching 4 channels Number of MPEG4 encoding : 1 channel
Protocols	TCP/IP, HTTP, SMTP, ARP, DNS, PPPoE, ICMP, FTP
Network interface	Ethernet : 10 BASE-T, RJ-45
Video control	Image quality(MinQ,MaxQ),frame rates, Intra interval, Bandwidth
Digital In/Out	Opto-isolated 4 inputs, relay 1 output
Voice	Phone line quality G.726 ADPCM Bi-directional audio : Mic input / Speaker output
Operation environment	0 ~ 50 , 800 mA(in normal 240 mA, Max 800 mA)
Access	Basic 10 Clients Maximum more 100 clients(optional)
Serial	RS-232 1 channel & RS-485 1 channel Mainly used for PTZ control

## Technical Specification

---

### Meye344

Video	Input : NTSC / PAL Resolution : 320 X 240, Compression : MPEG4, Compression rate : 200 ~ 400:1 Frame rate : Max. 30 frames/sec, Avg. 20 ~ 25 frames/sec Channel 4 MPEG4 encoding each channel 5 frames/sec Size per frame : 0.5 KB Number of video input : simultaneous 4 channels Number of MPEG4 encoding : simultaneous 4 channels
Protocols	TCP/IP, HTTP, SMTP, ARP, DNS, PPPoE, ICMP, FTP
Network interface	Ethernet : 10 BASE-T, RJ-45
Video control	Image quality(MinQ,MaxQ),frame rates, Intra interval, Bandwidth
Digital In/Out	Opto-isolated 4 inputs, relay 1 output
Voice	Phone line quality G.726 ADPCM Bi-directional audio : Mic input / Speaker output
Operation environment	0 ~ 50 , 800 mA(in normal 240 mA, Max 800 mA)
Access	Basic 10 Clients Maximum more 100 clients(optional)
Serial	RS-232 1 channel & RS-485 1 channel Mainly used for PTZ control