

INTERTEK TESTING SERVICES

Report No.: 0402262  
Model No.: #0308

hp

Pursuant to FCC Part 15 Section 15.223 Emissions Requirements

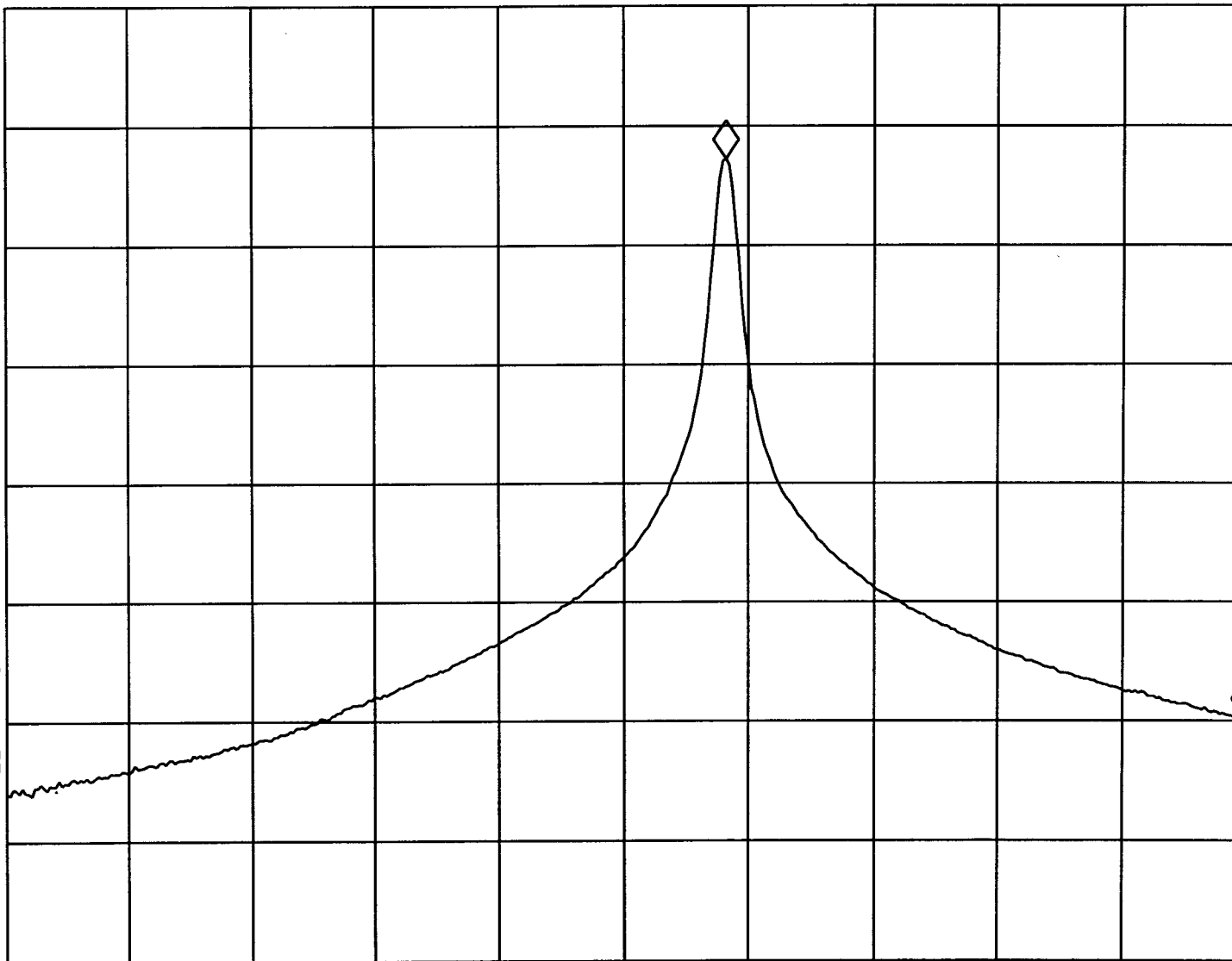
MKR 133.6 KHZ

REF -10.0 dBm

AT 10 dB

-47.03 dB

PEAK  
LOG  
10  
dB/



VA SB  
SC FC  
CORR

Tested By:

*[Signature]*  
Cang Li

Date: 17-2-04

Checked By:

*[Signature]*  
Peter Wong

Date: 24/2/04

Test Result: Pass / Fail / NA

START 26.9600 MHz

STOP 27.2800 MHz

#RES BW 3.0 KHZ

VBW 3 KHZ

#SWP 1.50 sec