

Test Set-up photos for MASS1

Test Set-up for SAR



Picture 1 test setup



Picture 2: Head SAR touch position 1



Picture 3: Head SAR touch position 2



Picture 4: Head SAR tilt position 1



Picture 5: Head SAR tilt position 2



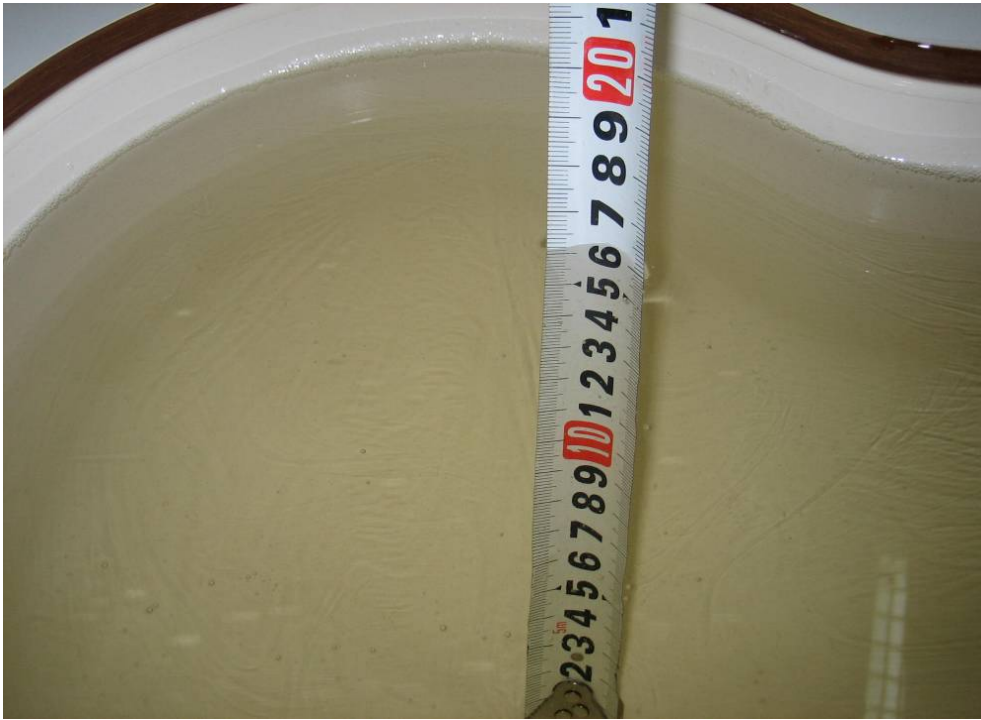
Picture 6: Body SAR Back to the phantom



Picture 7: Body SAR Front to the phantom



Picture 8: Body SAR Back to the phantom with earphone



Picture 9 Liquid Depth at Ear Reference Point for 835MHz Head Liquid



Picture 10 Liquid Depth at Ear Reference Point for 1900MHz Head Liquid