



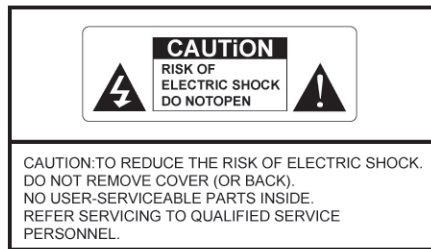
# Digital Camera DT1121

## User Manual



## Warning

To prevent fire or shock hazard, do not expose the unit to rain or moisture.



## For customers in the U.S.A.

### FCC Statement

This device complies with part 15 of the FCC Rules. Operation is subject to the following two conditions: (1) This device may not cause harmful interference, and (2) this device must accept any interference received, including interference that may cause undesired operation.



This symbol is intended to alert the user to the presence of uninsulated "dangerous voltage" within the product's enclosure that maybe of sufficient magnitude to constitute a risk of electric shock to persons.



This symbol is intended to alert the user to the presence of important operating and maintenance (servicing) instructions in the literature accompanying the appliance.

## For customers in Canada

This Class B digital apparatus complies with Canadian ICES-003.

## For customers in Europe

This product has been tested and found compliant with the limits sets out in the EMC Directive for using connection cables shorter than 3 meters.

**NOTE:**

This equipment has been tested and found to comply with the limits for a Class B digital device, pursuant to Part 15 of the FCC Rules. These limits are designed to provide reasonable protection against harmful interference in a residential installation. This equipment generates, uses, and can radiate radio frequency energy and, if not installed and used in accordance with the instructions, may cause harmful interference to radio communications. However, there is no guarantee that interference will not occur in a particular installation. If this equipment does cause harmful interference to radio or television reception, which can be determined by turning the equipment off and on, the user is encouraged to try to correct the interference by one or more of the following measures:

- Reorient or relocate the receiving antenna.
- Increase the separation between the equipment and receiver.

- Connect the equipment into an outlet on a circuit different from that to which the receiver is connected.

- Consult the dealer or an experienced radio/TV technician for help.

The supplied interface cable must be used with the equipment in order to comply with the limits for a digital device pursuant to Subpart B of Part 15 of FCC Rules.

**CAUTION**

You are cautioned that any changes or modifications not expressly approved in this manual could void the user's authority to operate the equipment.

# Contents

## 1. Features and Specifications Of DT1121

- 1.1. Features ..... 5
- 1.2. Specifications ..... 6

## 2. Outlines and Accessory Explanation

- 2.1. Outlines ..... 8
- 2.2. Accessories ..... 11

## 3. Preparation for Use

- 3.1. Installing batteries ..... 12
- 3.2. Usage of AC adapter ..... 13
- 3.3. Inserting and lifting SD card ..... 14
- 3.4. Fastening wrist belt ..... 15
- 3.5. ON-OFF of the camera ..... 15
- 3.6. Installing drivers to a PC ..... 16

## 4. Manipulating the Camera

- 4.1. Photo Capture ..... 24

- 4.2. Self-timer ..... 26
- 4.3. Video recording ..... 27
- 4.4. Playback ..... 28
- 4.5. Playing back movie ..... 30
- 4.6. Voice annotation to pictures ..... 30
- 4.7. File management
  - 4.7.1. File erasing ..... 31
  - 4.7.2. File protection ..... 33
  - 4.7.3. Format flash memory ..... 34
- 4.8. MP3 playback ..... 35
- 4.9. PC camera ..... 36
- 4.10. Upload and download of files ..... 39
- 4.11. Video out (DT1121A only) ..... 42
- 4.12. LCD brightness adjustment ..... 44

## 5. System Configuration

- 5.1. Language selection ..... 46

5.2. Sound effect .....	47
5.3. Online mode .....	48
5.4. Self power-off .....	49
5.5. Reset to default .....	50
5.6. Storage .....	51

## 6. Capture Configuration

6.1. Image size .....	53
6.2. Image quality .....	54
6.3. White balance .....	55
6.4. Flash mode .....	56
6.5. Exposure compensation .....	58
6.6. State indication .....	59

## 7. Others

7.1. Correct posture in operation .....	61
7.2. Keep the camera clean .....	62

7.3. Deal with the camera properly .....	62
7.4. Caution .....	63
7.5. Troubleshooting .....	64
Contact us .....	66

## 1. Features and Specifications Of DT1121/DT1121A

Thank you for taking a fancy to Guangbo digital camera, DT1121/DT1121A. The model is a functional combo of digital still camera, video camcorder, MP3 player and more. Meanwhile it is also easy to use even for a novice who never touched any digital camera. You will be able to use it freely after you go through the manual. It is our great wish that you will enjoy more in your life with guangbo DC in your hands.

### 1.1. Features

This 2 megapixel digital camera is featured with stylish and elegant aluminium alloy body and TFT LCD display. You can take sharp and colourful pictures easily. You can also add voice annotation to each picture as you like or simply use DT1121 as a voice recorder. Its continuous video recording and output capability(DT1121A only) makes it a simple-to-use camcorder. It is USB-equipped and supports not only movable hard disk function but also direct image transfer to a computer and video stream applications such as webcam or videophone. Moreover you will be pleased with DT1121 by enjoying beautiful music anywhere and anytime.

- 2 effective megapixels
- 4x digital zoom
- Video camcorder with 15 fps CIF images
- PAL or NTSC video output (DT1121A only)
- PC camera with USB interface
- Voice recorder
- MP3 player
- 1.6 inch TFT LCD
- Built-in storage and SD memory card

## 1.2. Specifications

Image sensor	2.1 Megapixel CMOS
Image size	1600×1200, 1280×1024, 800×600
Image quality	Fine, Normal, Basic
Color	24-bit true color (RGB)
Display	1.6 inch TFT LCD
LCD preview	30 fps
Lens	F2.8 Fixed focus
Zoom	4x digital zoom
Optical viewfinder	0.43x magnification with 49° of viewing field angle
Shutter	1/2-1/1000 sec
Exposure	Automatic with exposure compensation from -2 to +2EV in step of 1/2EV
White balance	Auto, daylight, shadow, fluorescent and tungsten
Shot to shot delay	7 sec
Consecutive capture	3 frames
Playback delay	<3 sec
Self timer	10 sec delay
Flash light	Auto, red-eye reduction, flash on and flash off

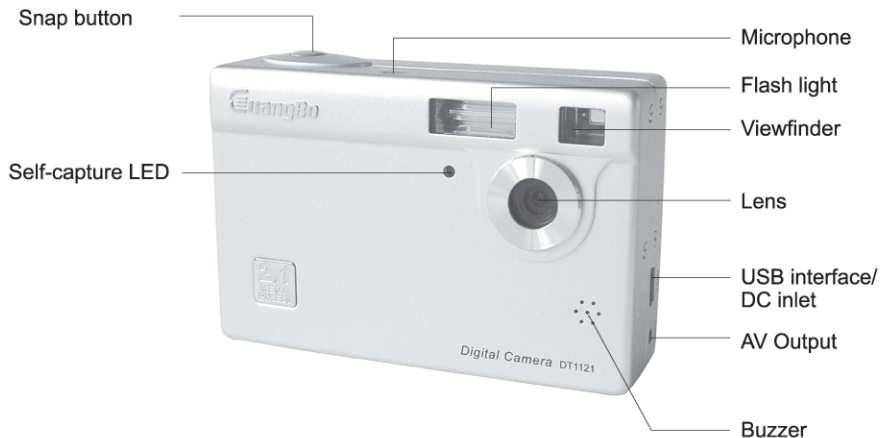
Flash charging time	<8 sec (with room temperature and full battery)
Flash range	<3 m
Built-in memory	16MB flash memory
Movable storage	SD card from 8MB to 128MB
File Format	JPEG+Exif2.1
PC Camera	15 fps CIF images
Video recording	M-JPEG at 15 fps CIF images
Audio player	MP3 decoder
Sensitivity	ISO100-400 equivalent
PC OS	Windows 98/Me/2000/XP, Mac OS 8.0 and above
Languages	Chinese, English, French, German and Spanish
Connectors	DC in, USB, audio out and video out (DT1121A)
Power supply	2x AAA alkaline or rechargeable Ni-MH battery
Dimension	93x61x27 mm
Weight	About 150 grams (without batteries)

The specifications are subject to change without notice.

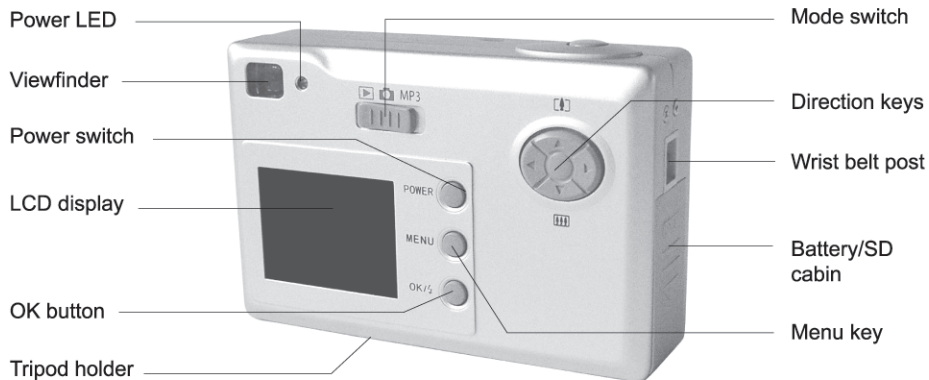


## 2. Outlines and Accessory Explanation

### 2.1. Outlines



Front View



Rear view

- **Snap button:** In Capture mode when each time the button is pressed, a picture is taken and saved in built-in memory or SD card. It follows the settings on image size, image quality, white balance and exposure.
- **Microphone:** It converts audio wave into electronic signal when the camera is in voice recording state.
- **Flash light:** When environment is too dark, it is used to increase the illumination onto the object to be captured.
- **Viewfinder:** The scene viewed through it will be captured. It is useful when environment is too bright to preview with LCD or to save power.
- **Self-capture LED:** When self-timer starts, it blinks regularly and gets quicker in last 2 seconds.
- **Lens:** It forms images of captured objects onto image sensor.
- **USB interface:** It is a universal serial bus connector to a computer. Via the interface images or movies can be transferred to the computer. Furthermore the camera can be used as a USB hard disk.
- **Video output (DT1121A):** The camera can be connected with a TV set with the terminal. Still or motion images originally on LCD can be shown on the TV.
- **Audio output:** It outputs 2-channel signals as an audio source and can drive directly earphone.
- **DC inlet:** It connects with the DC output of an AC adapter accompanying the camera. For continuous applications such as PC camera the AC adapter can provide stable power supply.
- **Buzzer:** It makes key striking sound.
- **Power LED:** It indicates power-on with constant light. When photo capacitor is under charging, it blinks. When charging is done, it returns to constant light.
- **Mode switch:** It functions a mode selector of capture, playback and MP3.
- **Direction keys:** They are four arrow keys. They move cursor up and down or left and right to select item in menu or move image in pan state. Up and down arrows also control digital zoom.
- **Wrist belt post:** It is used to fasten wrist belt.
- **Battery/SD cabin:** Under the cover is the SD socket and battery holder.
- **Menu key:** Enter and quit menu by pressing the key.
- **Power switch:** Turns on and off the camera. Each pressing taggles on and off.
- **LCD display:** It displays motion images, still pictures and menu, as well as state icons.
- **OK button:** It confirms selection in menu manipulation and control audio playback.
- **Tripod holder:** The camera can be fastened to a tripod with standard 1/4"-20 threads.

## 2.2. Accessories

- AC power adapter



- Software disk



- Camera bag



- Earphone



- USB cable



- Video cable  
(DT1121A only)

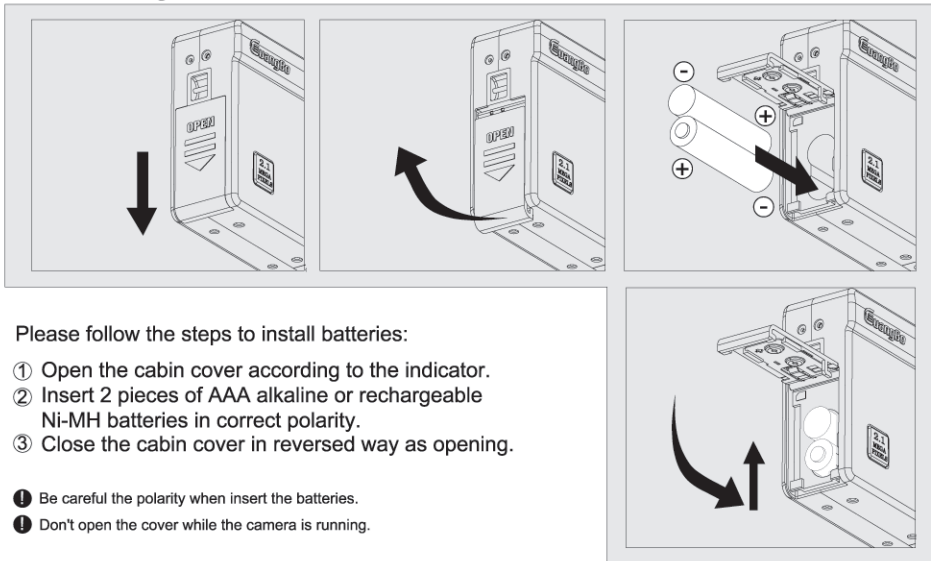


- Wrist belt

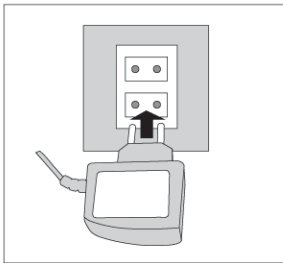


### 3. Preparation for Use

#### 3.1. Installing batteries

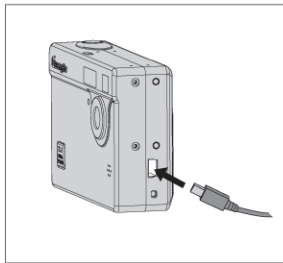


### 3.2. Usage of AC adapter



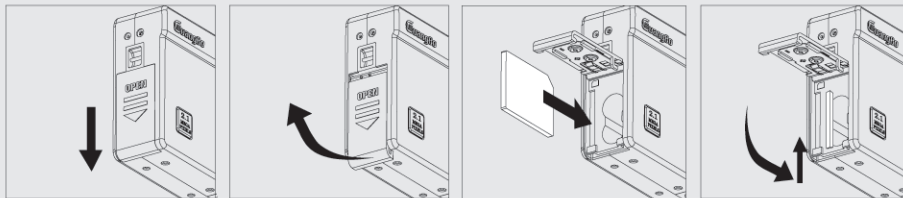
Please use the AC adapter as follows:  
Firstly, plug the AC adapter tightly into a socket of power line, and Secondly, have the DC plug connected to DC-in inlet of the camera. Please follow reversed steps when disconnect them.

When you upload photos, movies and voice recording to a computer or use the camera for video stream applications, the AC adapter can guarantee stable power supply and avoid data loss.



- ❶ When the camera is connected with a PC via USB, it is powered by the PC and the AC adapter is not necessary.
- ❶ Please use only the AC adapter along with the camera.
- ❶ Please turn off the camera before you connect or disconnect the AC adapter.
- ❶ Please do not joggle the plug strongly to avoid any damage.
- ❶ Please do not depart the AC adapter without authorized people in spot.
- ❶ Please do not make other use of the adapter.
- ❶ Please do not use or store the adapter in high temperature or high humidity or corrosive environment.
- ❶ It is normal for the AC adapter to get temperature during work.

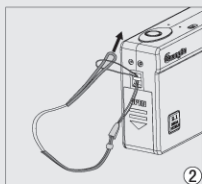
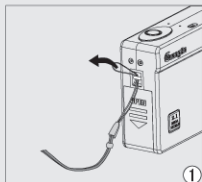
### 3.3. Inserting and lifting SD card



- ① Move the cover in the arrow direction to open it.
- ② Insert a SD card to the socket slot.
- ③ Push and move back the cover.

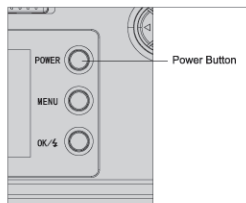
- ❗ Please be care of the side of the SD card when inset it to the socket.
- ❗ The SD card should be pushed to its home position.
- ❗ To remove the card just push it and it will rebound.
- ❗ Don't open the cover while the camera is running.

### 3.4. Fastening wrist belt



Please fasten the wrist belt as follows:  
**Firstly**, put the small ring on the belt tip through the fastening post as show in Figure ①.  
**Secondly**, put the belt through the small ring and tighten it as show in Figure ②.

### 3.5. ON-OFF of the camera



**【On】** In OFF status pressing the button will turn on the camera. After a short cartoon segment the camera will enter a mode according to the mode switch.

**【Off】** During operation pushing the button will make the camera enter power off routine and then power down.

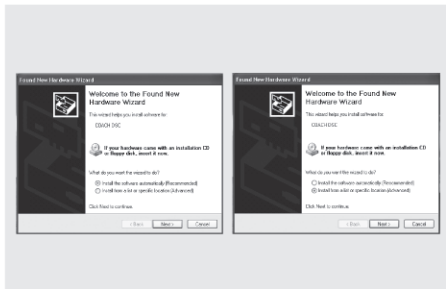
The camera can be configured AUTO POWER DOWN.  
It powers down by itself after a regulated idle period.



### 3.6. Installing drivers to a PC

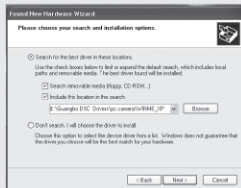


PC drivers are supplied in an optical disk along with the camera. Windows family OS and Mac OS are supported. The drivers are under corresponding directories. A suitable driver must be installed before a PC can communicate with the camera. Installation involves camera mode and movable hard disk. Below is the procedure of installing camera to Windows XP. It is similar to other operating systems.

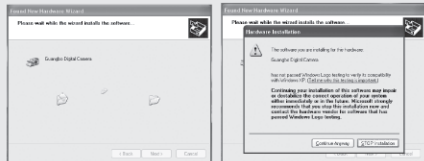


- ➡ Start your computer and insert the optical disk to the CD-ROM drives. When the camera is connected to a PC via USB, the a dialog box appears on the screen. Choose from a list or appointed site to install. Click "Next Step".

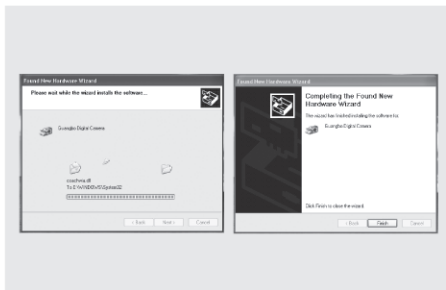
Before installation please quit all applications.



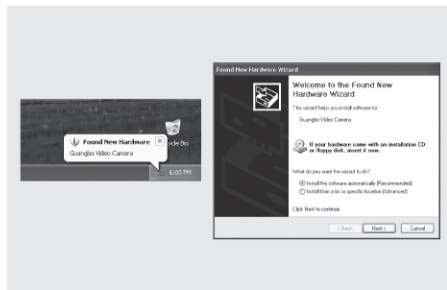
➡ Select " Include this location in the search" and click BROWSE. When find E:\Guangbo DSC Drivers\PC Camera\WINME\_XP, click on WINME\_XP files. Click "Next Step".



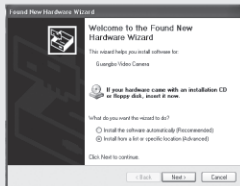
➡ Click "Continue".



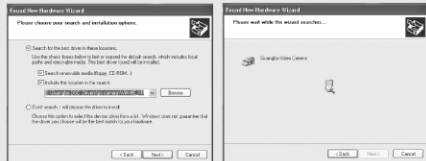
➔ Digital still camera drivers are being copied to the computer. The dialog box disappears when finishes.



➔ Upon installation of the Digital Still Camera driver, "Find new hardware" icon appears in the taskbar.

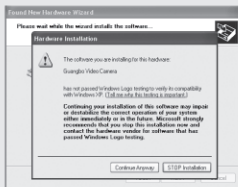


➡ Click "Continue".

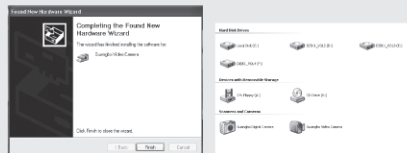


➡ Select " Include this location in the search" and click BROWSE. When find E:\Guangbo DSC Drivers\PC Camera\WINME\_XP, click on WINME\_XP files. Click "Next Step".

- Here the CD-ROM is assumed to be E while it will be dependent on your computer.



➡ Click "Continue".



➡ When a dialog box appears and then disappears, Video Capture Device software installation is done. Two new icons are added in MY COMPUTER.



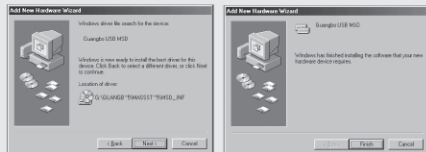
Installing movable hard disk.  
The camera has default on-time mode of movable hard disk. A mass storage driver needs to be installed for Windows 98 operating system as follows.

With Windows 2000/NT/XP, Mac OS 8.0 and above the camera can be recognized automatically. Upon connection a movable hard disk icon appears without driver needed.

➔ When the camera is connected with a computer via USB, the dialog box above pops up. click "Next Step".

























➔ Check "appointed location" and click on "Browse". Select applicable directory in the optical disk, for instance, \Guangbo DSC Drivers\Mass storage. click "Next Step".









➔ Repeat clicking "Next Step" until installation finishes. Opening "my computer", you will see a movable hard disk icon.

## 4. Manipulating the Camera

Before introducing the Basic Operations, it is necessary to define each icon.

	Capture		Auto flash
	Video recording		Flash on
	Consecutive shots		Flash off
	Capture configuration in capture mode		Red-eye reduction
	System configuration in playback mode		Battery power
	Self-timer off	AWB	Auto white balance
	Self-timer on		Tungsten
	Full screen display		Daylight
	Thumbnails display		Shadow
	File management		Fluorescent
0001	Counter		Volume
	Zoom indication		Repeat playing all

	Illumination metering zone		Playing one by one
	1600x1200 pixels	F	Fine
	1280x1024 pixels	N	Normal
	800x600 pixels	B	Basic
	File lock		