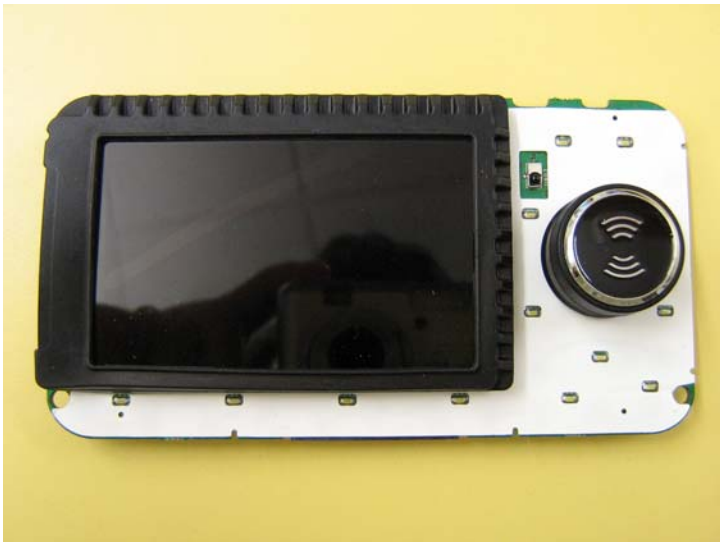


Back View (with Back Housing Removed)



Front View (with Front Housing Removed)



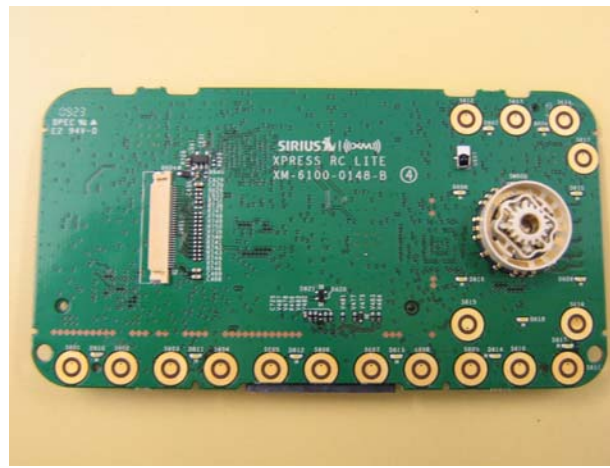
Front View PCBA (with LCD/Frame/Snubber)



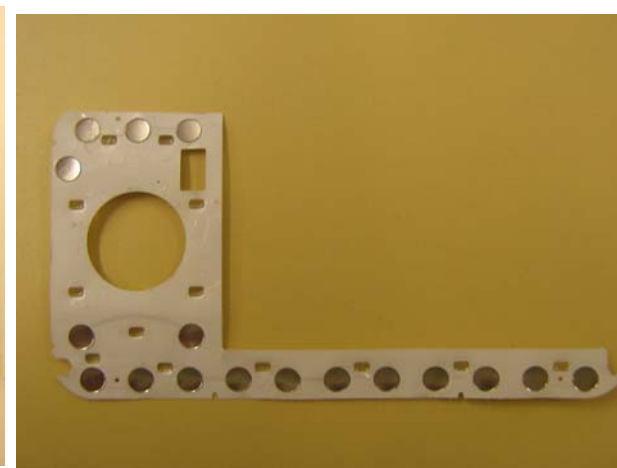
Back View of LCD/ Frame/Snubber



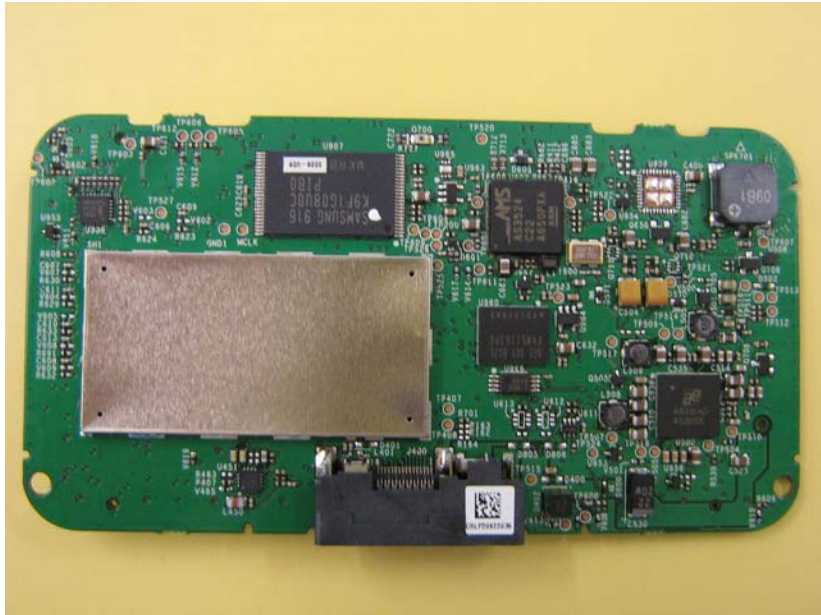
Front View PCBA



Front View PCBA (with Popple Domes Removed)



Back of Popple Domes



Back of PCBA with Shield Cover



Back of PCBA without Shield Cover