



Shenzhen CTL Testing Technology Co., Ltd.

FCC & IC TEST REPORT

47 CFR FCC Part 15 Subpart C 15.231 and RSS-210 Annex 1

Report Reference No.: CTL1508072219-WF

Compiled by:
(position+printed name+signature)

Jacky Chen
(File administrators)

Jacky Chen

Tested by:
(position+printed name+signature)

Allen Wang
(Test Engineer)

Allen Wang

Approved by:
(position+printed name+signature)


Tracy Qi
(Manager)

Tracy Qi

Product Name.....: DryBuddyFLEX Transceiver

Model/Type reference.....: DBFLR02

List Model(s).....: /

Trade Mark.....: 

FCC ID.....: RHU-DBFLR02

IC: 10836A-DBFLR02

Applicant's name.....: Enuresis Solutions, LLC

Address of applicant.....: 51W, Fairmont Avenue, Savannah, GA USA, 31406

Test Firm.....: Shenzhen CTL Testing Technology Co., Ltd.

Address of Test Firm.....: Floor 1-A, Baisha Technology Park, No.3011, Shahexi Road,
Nanshan District, Shenzhen, China 518055

Test specification.....:

Standard.....: 47 CFR FCC Part 15 Subpart C 15.231 &
RSS-210 Issue 8 DEC 2010

TRF Originator.....: Shenzhen CTL Testing Technology Co., Ltd.

Master TRF.....: Dated 2011-01

Date of Receipt.....: Aug. 20, 2015

Date of Test Date.....: Aug. 21, 2015 –Aug. 28, 2015

Data of Issue.....: Aug. 29, 2015

Result.....: Positive

Shenzhen CTL Testing Technology Co., Ltd. All rights reserved.

This publication may be reproduced in whole or in part for non-commercial purposes as long as the Shenzhen CTL Testing Technology Co., Ltd. is acknowledged as copyright owner and source of the material. Shenzhen CTL Testing Technology Co., Ltd. takes no responsibility for and will not assume liability for damages resulting from the reader's interpretation of the reproduced material due to its placement and context.

TEST REPORT

Test Report No. : CTL1508072219-WF	Aug. 29, 2015 Date of issue
---	--------------------------------

Equipment under Test : DryBuddyFLEX Transceiver

Model /Type : DBFLR02

Listed Models : /

Applicant : **Enuresis Solutions, LLC**

Address : 51W,Fairmont Avenue, Savannah, GA USA, 31406

Manufacturer : **Shenzhen Poshton Technology Co.,Ltd**

Address : 3/F, BLDG9, Beifang Yongfa Technology Park,
Chaoyang Rd, Yanchuan Industrial Zone, Songgang
Town ,Bao'an Distric, Shenzhen 518105, P.R.China

Test result	Pass *
--------------------	---------------

* In the configuration tested, the EUT complied with the standards specified page 5.

The test report merely corresponds to the test sample.

It is not permitted to copy extracts of these test result without the written permission of the test laboratory.

**** Modified History ****

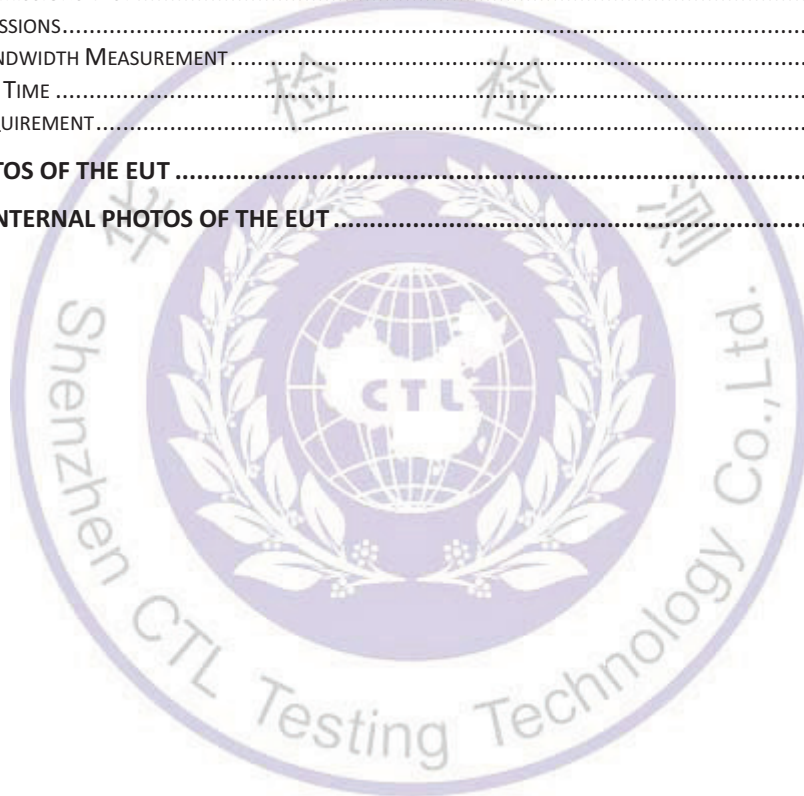
Version	Description	Issued Data	Report No.	Remark
Version 1.0	Initial Test Report Release	2015-08-29	CTL1508072219-WF	Tracy Qi



Table of Contents

Page

1. SUMMARY.....	5
1.1. TEST STANDARDS.....	5
1.2. TEST DESCRIPTION.....	5
1.3. TEST FACILITY	6
1.4. STATEMENT OF THE MEASUREMENT UNCERTAINTY.....	6
2. GENERAL INFORMATION.....	7
2.1. ENVIRONMENTAL CONDITIONS	7
2.2. GENERAL DESCRIPTION OF EUT	7
2.3. DESCRIPTION OF TEST MODES	7
2.4. EQUIPMENTS USED DURING THE TEST	7
2.5. RELATED SUBMITTAL(s) / GRANT(s).....	8
2.6. MODIFICATIONS.....	8
3. TEST CONDITIONS AND RESULTS	9
3.1. CONDUCTED EMISSIONS TEST	9
3.2. RADIATED EMISSIONS.....	12
3.3. OCCUPIED BANDWIDTH MEASUREMENT.....	17
3.4. DEACTIVATION TIME	18
3.5. ANTENNA REQUIREMENT.....	19
4. TEST SETUP PHOTOS OF THE EUT	20
5. EXTERNAL AND INTERNAL PHOTOS OF THE EUT	22



1. SUMMARY

1.1. TEST STANDARDS

The tests were performed according to following standards:

FCC Rules Part 15.231: Periodic operation in the band 40.66-40.70 MHz and above 70 MHz.

RSS-210 Issue 8: — Licence-exempt Radio Apparatus (All Frequency Bands): Category I Equipment

RSS-Gen Issue 4: — General Requirements for Compliance of Radio Apparatus

ANSI C63.10:2013

ANSI C63.4:2014

1.2. Test Description

FCC and IC Requirements		
FCC Part 15.207 RSS-Gen 8.8	Conducted Emission	PASS
FCC Part 15.231(a)(2) RSS-210 A1.1.1	Automatically Deactivate	PASS
FCC Part 15.231(b) RSS-210 A1.1.2	Electric Field Strength of Fundamental Emission	PASS
FCC Part 15.205 & 15.209 & 15.231(b) RSS-210 A1.1.2 RSS-Gen 8.9	Electric Field Strength of Spurious Emission	PASS
FCC Part 15.231(c) RSS-210 A1.1.3	-20dB bandwidth & 99% bandwidth	PASS

1.3. Test Facility

1.3.1 Address of the test laboratory

Shenzhen CTL Testing Technology Co., Ltd.

Floor 1-A, Baisha Technology Park, No. 3011, Shahexi Road, Nanshan, Shenzhen 518055 China

There is one 3m semi-anechoic chamber and two line conducted labs for final test. The Test Sites meet the requirements in documents ANSI C63.4 and CISPR 22/EN 55022 requirements.

1.3.2 Laboratory accreditation

The test facility is recognized, certified, or accredited by the following organizations:

IC Registration No.: 9618B

The 3m alternate test site of Shenzhen CTL Testing Technology Co., Ltd. EMC Laboratory has been registered by Certification and Engineer Bureau of Industry Canada for the performance of with Registration No.: 9618B on November 13, 2013.

FCC-Registration No.: 970318

Shenzhen CTL Testing Technology Co., Ltd. EMC Laboratory has been registered and fully described in a report filed with the (FCC) Federal Communications Commission. The acceptance letter from the FCC is maintained in our files. Registration 970318, December 19, 2013.

1.4. Statement of the measurement uncertainty

The data and results referenced in this document are true and accurate. The reader is cautioned that there may be errors within the calibration limits of the equipment and facilities. The measurement uncertainty was calculated for all measurements listed in this test report acc. to CISPR 16 - 4 „Specification for radio disturbance and immunity measuring apparatus and methods – Part 4: Uncertainty in EMC Measurements“ and is documented in the Shenzhen CTL Testing Technology Co., Ltd. quality system acc. to DIN EN ISO/IEC 17025. Furthermore, component and process variability of devices similar to that tested may result in additional deviation. The manufacturer has the sole responsibility of continued compliance of the device.

Hereafter the best measurement capability for CTL laboratory is reported:

Test	Range	Measurement Uncertainty	Notes
Radiated Emission	30~1000MHz	4.10dB	(1)
Radiated Emission	Above 1GHz	4.32dB	(1)
Conducted Disturbance	0.15~30MHz	3.20dB	(1)

- (1) This uncertainty represents an expanded uncertainty expressed at approximately the 95% confidence level using a coverage factor of k=2.

2. GENERAL INFORMATION

2.1. Environmental conditions

During the measurement the environmental conditions were within the listed ranges:

Normal Temperature:	25°C
Relative Humidity:	55 %
Air Pressure:	101 kPa

2.2. General Description of EUT

Product Name:	DryBuddyFLEX Transceiver
Model/Type reference:	DBFLR02
Power supply:	DC 12V from adapter
Modulation:	ASK
Operation frequency:	433.92MHz
Channel number:	Signal Channel Device
Antenna type:	PCB Antenna
Antenna gain:	0dBi

Note: For more details, please refer to the user's manual of the EUT.

2.3. Description of Test Modes

The EUT has been tested under typical operating condition. The Applicant provides communication tools software to control the EUT for staying in continuous transmitting and receiving mode for testing.

2.4. Equipments Used during the Test

Test Equipment	Manufacturer	Model No.	Serial No.	Calibration Date	Calibration Due Date
LISN	R&S	ENV216	3560.6550.1 2	2015/06/02	2016/06/01
LISN	R&S	ESH2-Z5	860014/010	2015/06/02	2016/06/01
Bilog Antenna	Sunol Sciences Corp.	JB1	A061713	2015/06/02	2016/06/01
EMI Test Receiver	R&S	ESCI	103710	2015/06/02	2016/06/01
Spectrum Analyzer	Agilent	E4407B	MY41440676	2015/05/21	2016/05/20
Controller	EM Electronics	Controller EM 1000	N/A	2015/05/21	2016/05/20
Horn Antenna	Sunol Sciences Corp.	DRH-118	A062013	2015/05/19	2016/05/18
Active Loop Antenna	SCHWARZBECK	FMZB1519	1519-037	2015/05/19	2016/05/18
Amplifier	Agilent	8349B	3008A02306	2015/05/19	2016/05/18
Amplifier	Agilent	8447D	2944A10176	2015/05/19	2016/05/18
Temperature/Humi	Gangxing	CTH-608	02	2015/05/20	2016/05/19

dity Meter					
High-Pass Filter	K&L	9SH10-2700/X1 2750-O/O	N/A	2015/05/20	2016/05/19
High-Pass Filter	K&L	41H10-1375/U1 2750-O/O	N/A	2015/05/20	2016/05/19
Coaxial Cables	HUBER+SUHN ER	SUCOFLEX 104PEA-10M	10m	2015/06/02	2016/06/01
Coaxial Cables	HUBER+SUHN ER	SUCOFLEX 104PEA-3M	3m	2015/06/02	2016/06/01
Coaxial Cables	HUBER+SUHN ER	SUCOFLEX 104PEA-3M	3m	2015/06/02	2016/06/01
RF Cable	Megalon	RF-A303	N/A	2015/06/02	2016/06/01

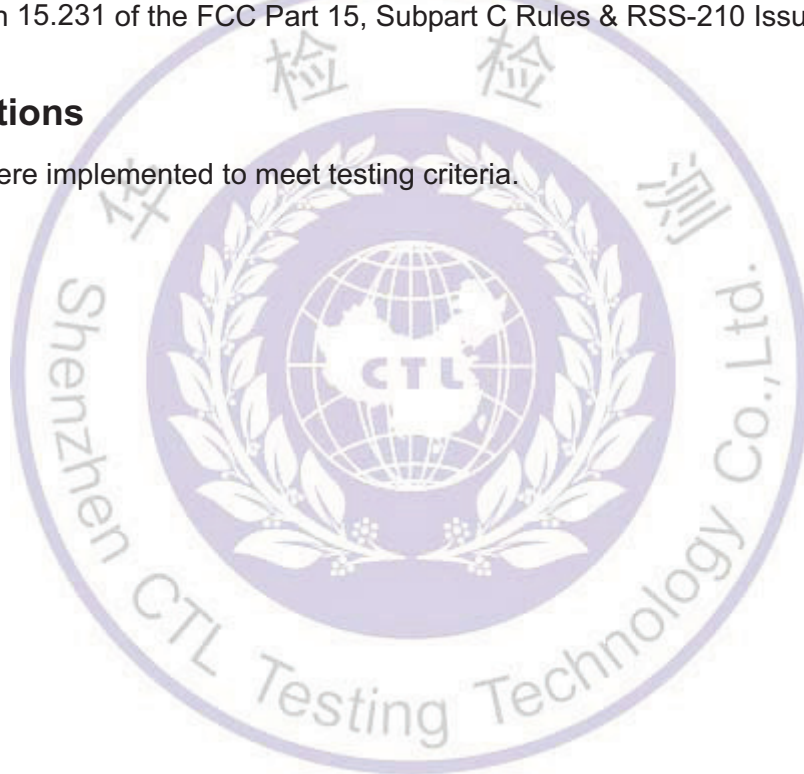
The calibration interval was one year

2.5. Related Submittal(s) / Grant(s)

This submittal(s) (test report) is intended for FCC ID:RHU-DBFLR02 & IC:10836A-DBFLR02 filing to comply with Section 15.231 of the FCC Part 15, Subpart C Rules & RSS-210 Issue 8 Annex 1

2.6. Modifications

No modifications were implemented to meet testing criteria.



3. TEST CONDITIONS AND RESULTS

3.1. Conducted Emissions Test

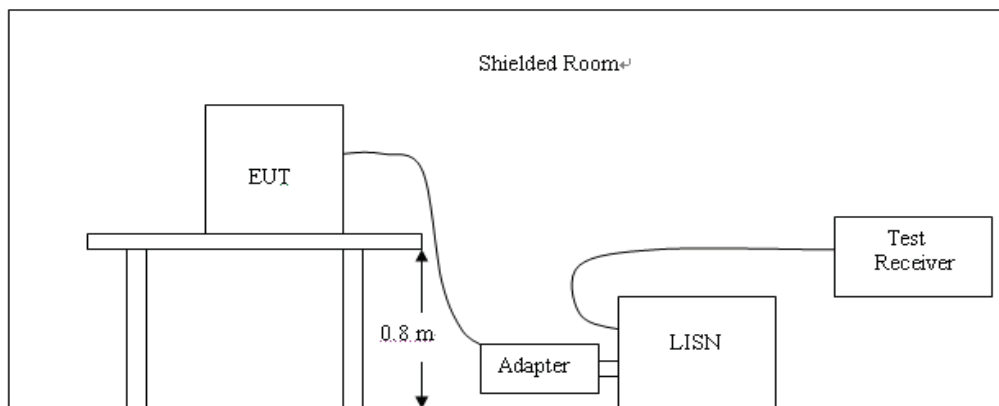
LIMIT

FCC CFR Title 47 Part 15 Subpart C Section 15.207 and RSS–Gen 8.8

Frequency range (MHz)	Limit (dBuV)	
	Quasi-peak	Average
0.15-0.5	66 to 56*	56 to 46*
0.5-5	56	46
5-30	60	50

* Decreases with the logarithm of the frequency.

TEST CONFIGURATION

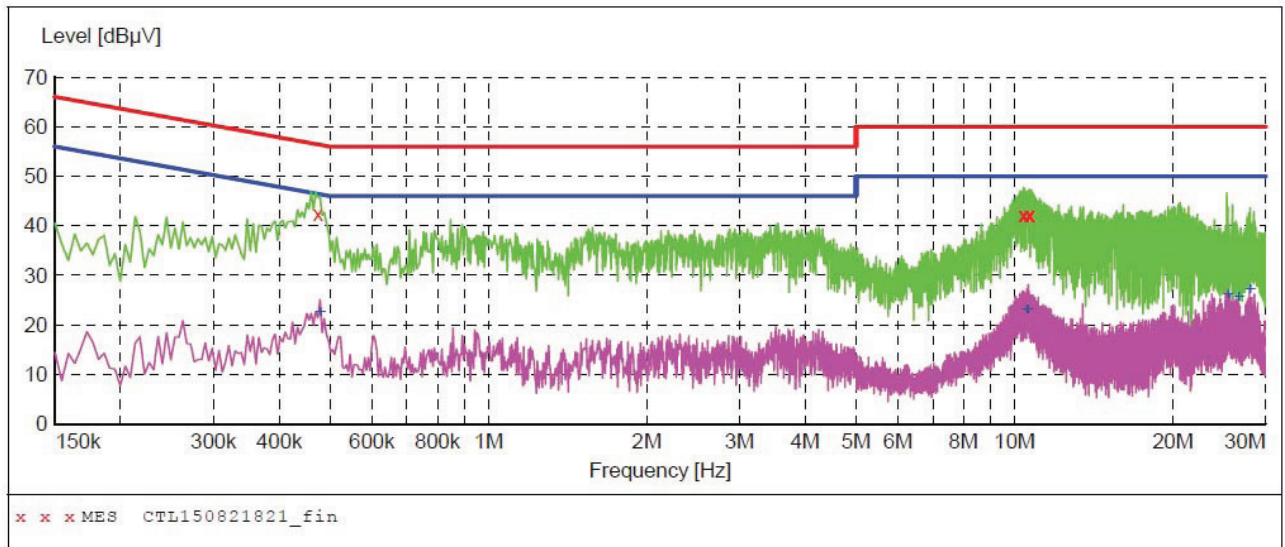


TEST PROCEDURE

1. The equipment was set up as per the test configuration to simulate typical actual usage per the user's manual. The EUT is a tabletop system; a wooden table with a height of 0.8 meters is used and is placed on the ground plane as per ANSI C63.10:2013
2. Support equipment, if needed, was placed as per ANSI C63.10:2013
3. All I/O cables were positioned to simulate typical actual usage as per ANSI C63.10:2013
4. If a EUT received DC power from the USB Port of Notebook PC, the PC's adapter received AC120V/60Hz power through a Line Impedance Stabilization Network (LISN) which supplied power source and was grounded to the ground plane.
5. All support equipments received AC power from a second LISN, if any.
6. The EUT test program was started. Emissions were measured on each current carrying line of the EUT using a spectrum Analyzer / Receiver connected to the LISN powering the EUT. The LISN has two monitoring points: Line 1 (Hot Side) and Line 2 (Neutral Side). Two scans were taken: one with Line 1 connected to Analyzer / Receiver and Line 2 connected to a 50 ohm load; the second scan had Line 1 connected to a 50 ohm load and Line 2 connected to the Analyzer / Receiver.
7. Analyzer / Receiver scanned from 150 KHz to 30MHz for emissions in each of the test modes.
8. During the above scans, the emissions were maximized by cable manipulation.

TEST RESULTS**SCAN TABLE: "Voltage (9K-30M) FIN"**

Short Description: 150K-30M Voltage

**MEASUREMENT RESULT: "CTL150821821_fin"**

8/21/2015 7:17PM

Frequency MHz	Level dBuV	Transd dB	Limit dBuV	Margin dB	Detector	Line	PE
0.474001	42.40	10.2	56	14.0	QP	L1	GND
10.369501	42.20	10.6	60	17.8	QP	L1	GND
10.432501	42.20	10.6	60	17.8	QP	L1	GND
10.644001	42.20	10.6	60	17.8	QP	L1	GND
10.711501	42.00	10.6	60	18.0	QP	L1	GND
10.725001	42.10	10.6	60	17.9	QP	L1	GND

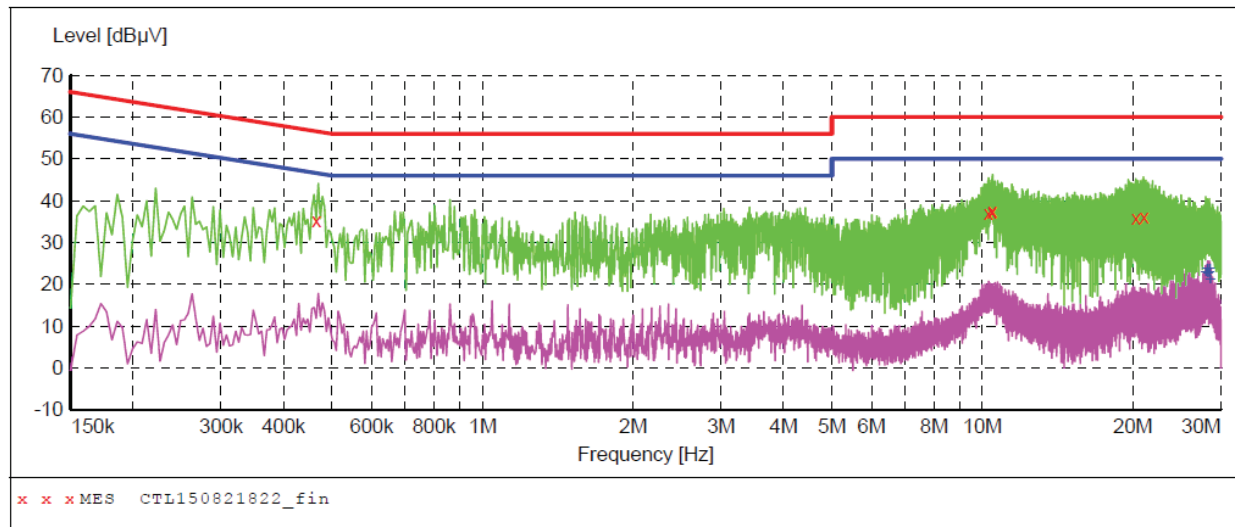
MEASUREMENT RESULT: "CTL150821821_fin2"

8/21/2015 7:17PM

Frequency MHz	Level dBuV	Transd dB	Limit dBuV	Margin dB	Detector	Line	PE
0.478501	22.60	10.2	46	23.8	AV	L1	GND
10.563001	23.00	10.6	50	27.0	AV	L1	GND
10.585501	23.10	10.6	50	26.9	AV	L1	GND
25.512001	26.10	11.1	50	23.9	AV	L1	GND
26.713501	25.60	11.2	50	24.4	AV	L1	GND
28.036501	27.00	11.2	50	23.0	AV	L1	GND

SCAN TABLE: "Voltage (9K-30M)FIN"

Short Description: 150K-30M Voltage

**MEASUREMENT RESULT: "CTL150821822_fin"**

8/21/2015 7:20PM

Frequency MHz	Level dBμV	Transd dB	Limit dBμV	Margin dB	Detector	Line	PE
0.465001	35.10	10.2	57	21.5	QP	N	GND
10.266001	37.10	10.6	60	22.9	QP	N	GND
10.446001	37.20	10.6	60	22.8	QP	N	GND
10.455001	37.40	10.6	60	22.6	QP	N	GND
20.269501	35.80	11.0	60	24.2	QP	N	GND
21.030001	36.10	11.0	60	23.9	QP	N	GND

MEASUREMENT RESULT: "CTL150821822_fin2"

8/21/2015 7:20PM

Frequency MHz	Level dBμV	Transd dB	Limit dBμV	Margin dB	Detector	Line	PE
27.915001	22.70	11.2	50	27.3	AV	N	GND
28.158001	23.60	11.2	50	26.4	AV	N	GND
28.216501	22.40	11.2	50	27.6	AV	N	GND
28.396501	22.70	11.2	50	27.3	AV	N	GND
28.459501	23.70	11.2	50	26.3	AV	N	GND
28.518001	21.00	11.2	50	29.0	AV	N	GND

3.2. Radiated Emissions

Limit

For intentional device, according to 15.209(a) and RSS-Gen 8.9, the general requirement of field strength of radiated emission from intentional radiators at a distance of 3 meters shall not exceed the following table.

Frequency (MHz)	Distance (Meters)	Radiated (dB μ V/m)	Radiated (μ V/m)
0.009-0.49	3	$20\log(2400/F(\text{KHz}))+40\log(300/3)$	$2400/F(\text{KHz})$
0.49-1.705	3	$20\log(24000/F(\text{KHz}))+40\log(30/3)$	$24000/F(\text{KHz})$
1.705-30	3	$20\log(30)+40\log(30/3)$	30
30-88	3	40.0	100
88-216	3	43.5	150
216-960	3	46.0	200
Above 960	3	54.0	500

In addition to the provisions of 15.231(b) and RSS 210-A1.1.2, the field strength of emissions from intentional radiators operated under this section shall not exceed the following:

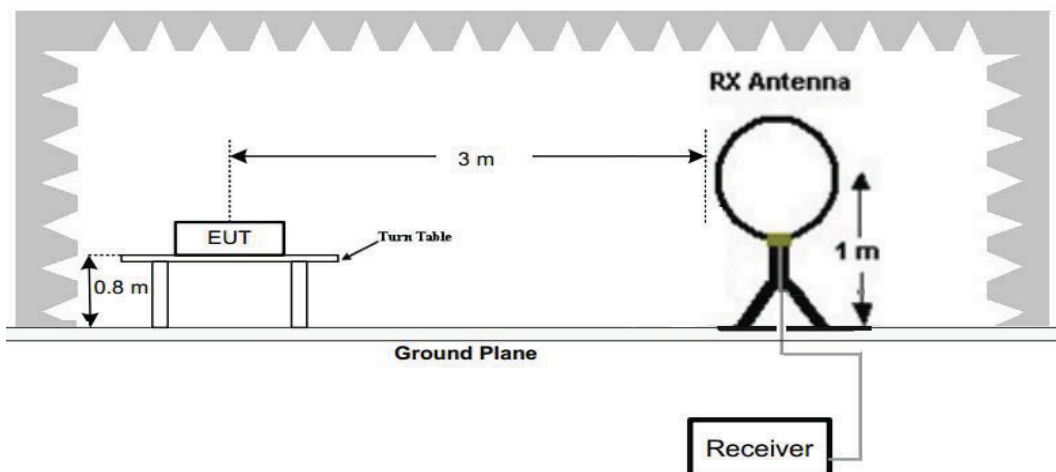
Funda-mental fre-quency (MHz)	Field strength of funda-mental (microvolts/ meter)	Field strength of spurious emissions (microvolts/meter)
40.66– 40.70.	2,250	225
70–130	1,250	125
130–174	¹ 1,250 to 3,750	¹ 125 to 375
174–260	3,750	375
260–470	¹ 3,750 to 12,500	¹ 375 to 1,250
Above 470	12,500	1,250

¹ Linear interpolations.

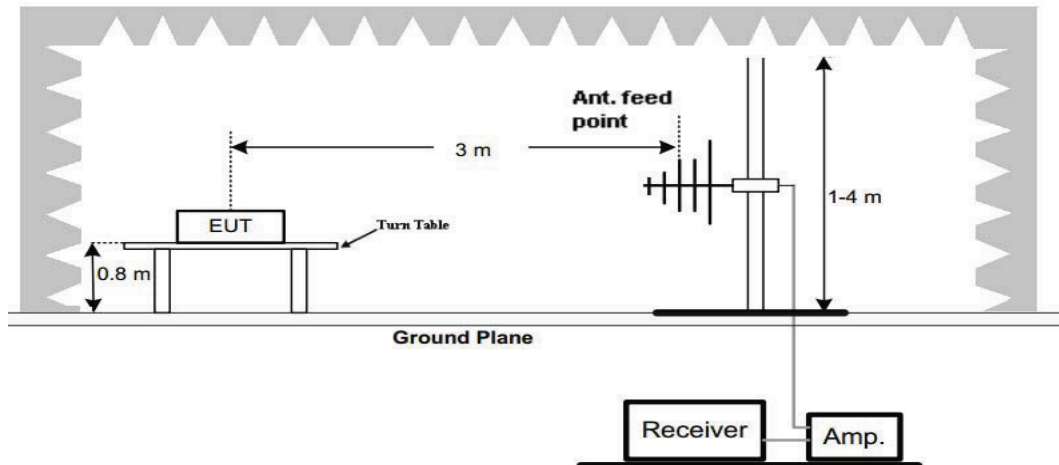
[Where F is the frequency in MHz, the formulas for calculating the maximum permitted fundamental field strengths are as follows: for the band 260-470 MHz, $\mu\text{V/m}$ at 3 meters = $41.6667(F) - 7083.3333$. The maximum permitted unwanted emission level is 20 dB below the maximum permitted fundamental level.]

TEST CONFIGURATION

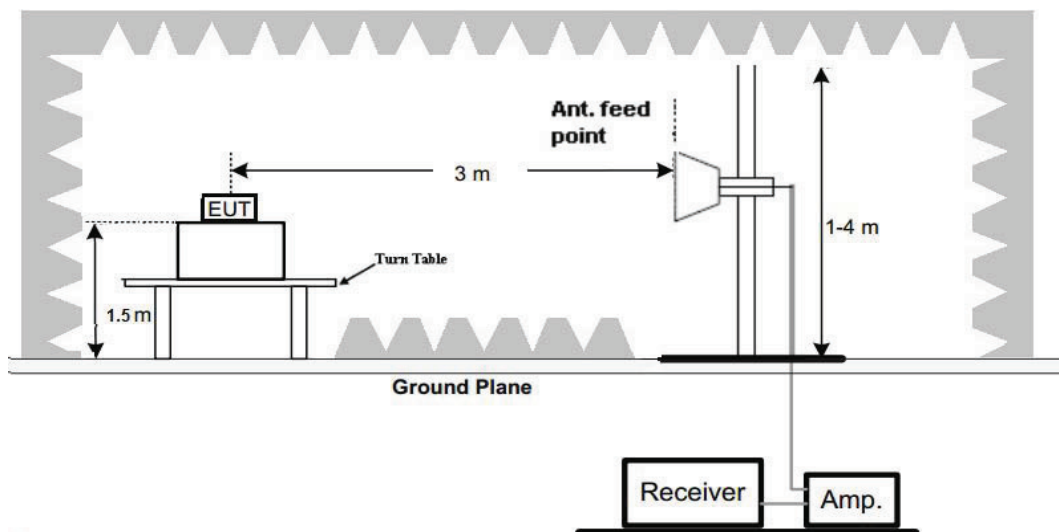
(A) Radiated Emission Test Set-Up, Frequency Below 30MHz



(B) Radiated Emission Test Set-Up, Frequency below 1000MHz



(C) Radiated Emission Test Set-Up, Frequency above 1000MHz



Test Procedure

1. Below 1GHz measurement the EUT is placed on a turntable which is 0.8m above ground plane, and above 1GHz measurement EUT was placed on a low permittivity and low loss tangent turn table which is 1.5m above ground plane.
2. Maximum procedure was performed by raising the receiving antenna from 1m to 4m and rotating the turn table from 0° to 360° to acquire the highest emissions from EUT
3. And also, each emission was to be maximized by changing the polarization of receiving antenna both horizontal and vertical.
4. Repeat above procedures until all frequency measurements have been completed.

TEST RESULTS

The emissions from 30MHz to 5GHz are measured peak and average level, below 1 GHz measured QP level, detailed test data please see below. Besides, we tested 3 directions and recorded the worst data.

Emission Styles	Frequency (MHz)	Reading (dBuV/m)	Limit (dBuV/m)	Margin (dB)	Detector	Direction (H/V)
Fundamental	433.92	81.20	100.80	19.60	PK	H
Spurious	435.87	55.78	80.80	25.02	PK	H
Harmonics	867.84	62.33	80.80	18.47	PK	H
Harmonics	1735.68	58.32	80.80	22.48	PK	H
--	--	--	--	--	--	--
Fundamental	433.92	82.32	100.80	18.48	PK	V
Spurious	435.87	58.22	80.80	22.58	PK	V
Harmonics	867.84	63.41	80.80	17.39	PK	V
Harmonics	1735.68	60.30	80.80	20.50	PK	V
--	--	--	--	--	--	--

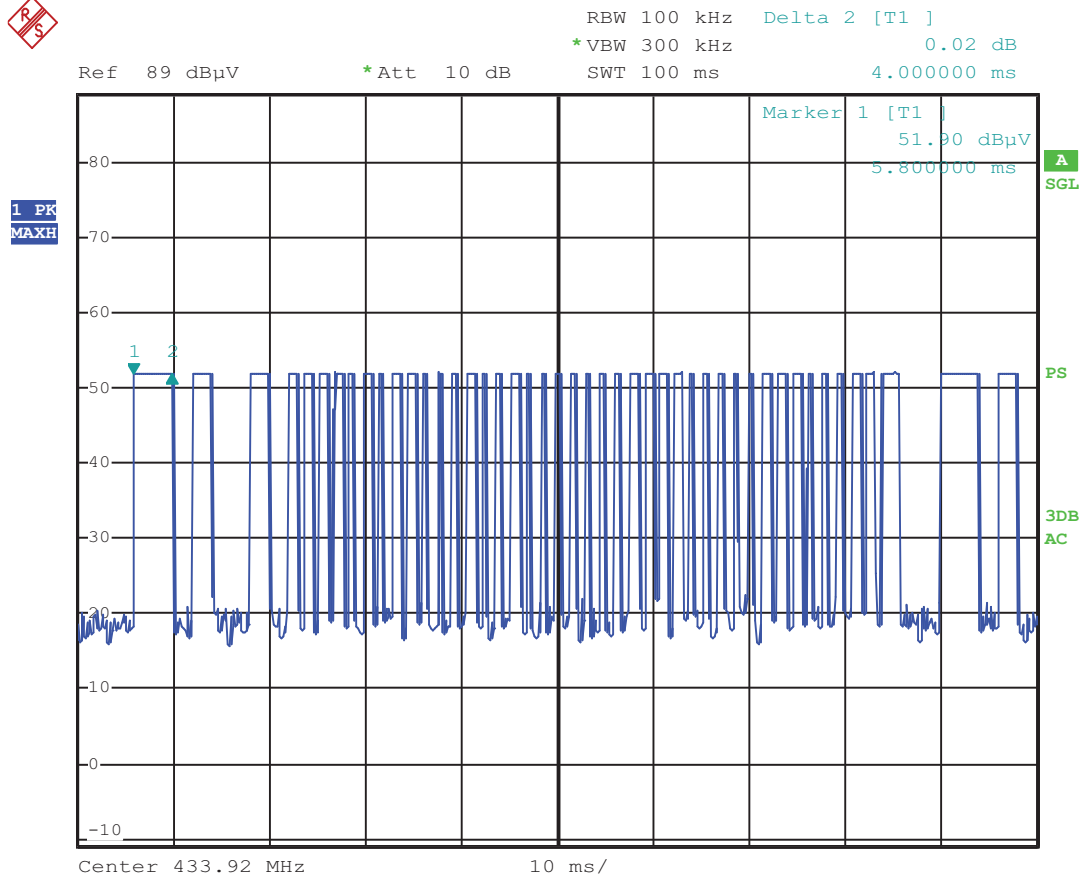
Emission Styles	Frequency (MHz)	PK Level (dBuV/m)	AV Factor (dB/m)	AV Level (dBuV/m)	Limit (dBuV/m)	Margin (dB)	Direction (H/V)
Fundamental	433.92	81.20	-6.52	74.68	80.80	6.12	H
Spurious	435.87	55.78	-6.52	49.26	60.80	11.54	H
Harmonics	867.84	62.33	-6.52	55.81	60.80	4.99	H
Harmonics	1735.68	58.32	-6.52	51.80	60.80	9.00	H
--	--	--	--	--	--	--	--
Fundamental	433.92	82.32	-6.52	75.80	80.80	5.00	V
Spurious	435.87	58.22	-6.52	51.70	60.80	9.10	V
Harmonics	867.84	63.41	-6.52	56.89	60.80	3.91	V
Harmonics	1735.68	60.30	-6.52	53.78	60.80	7.02	V
--	--	--	--	--	--	--	--

Note:

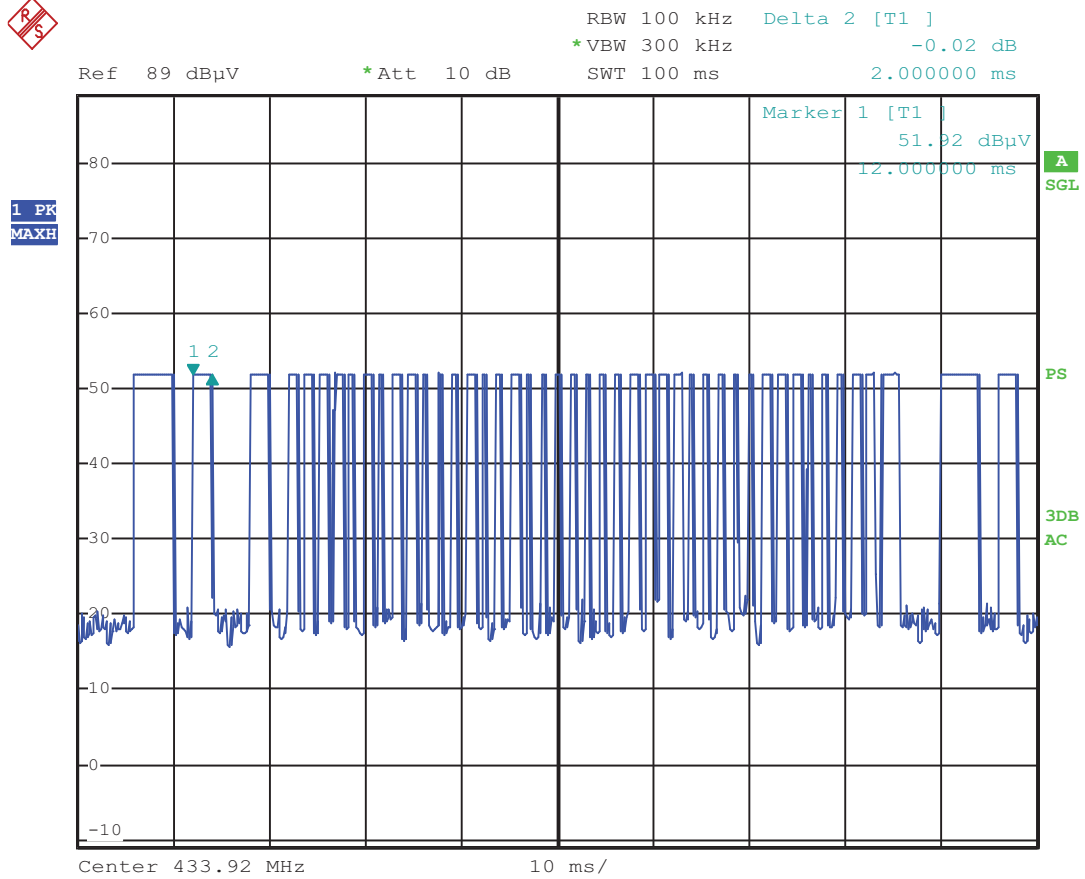
1. AV Level (dBuV/m)= PK Level (dBuV/m)+ AV Factor(dB)
2. In a 100ms observation period found 4ms burst 2pcs, 2ms burst 4pcs, 1ms burst 18pcs,0.6ms burst 22pcs, the Duty Cycle can calculate as below:

$$\text{Duty Cycle} = (4 \times 2 + 2 \times 4 + 1 \times 18 + 0.6 \times 22) / 100\text{ms} = 0.472$$

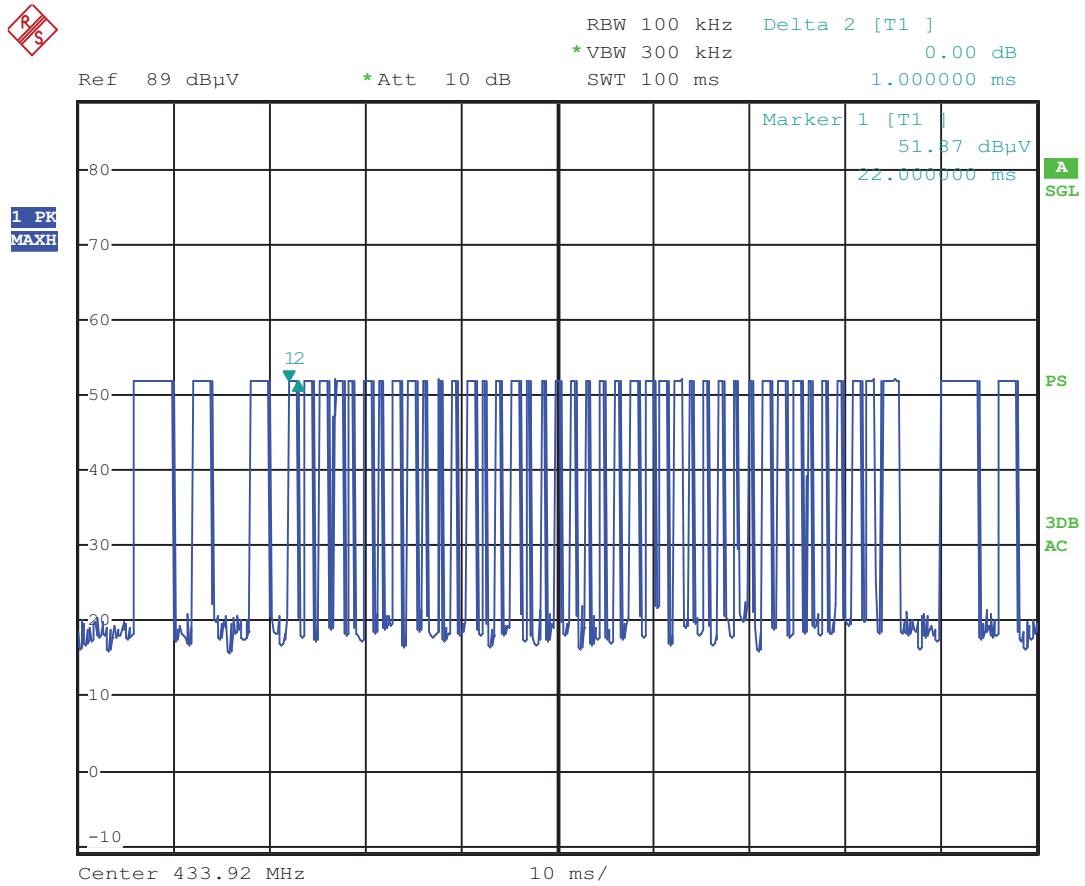
$$\text{AV Factor} = 20 \times \log(\text{Duty Cycle}) = 20 \times \log(0.472) = -6.52$$
 (The Data of Duty Cycle See the follow page)



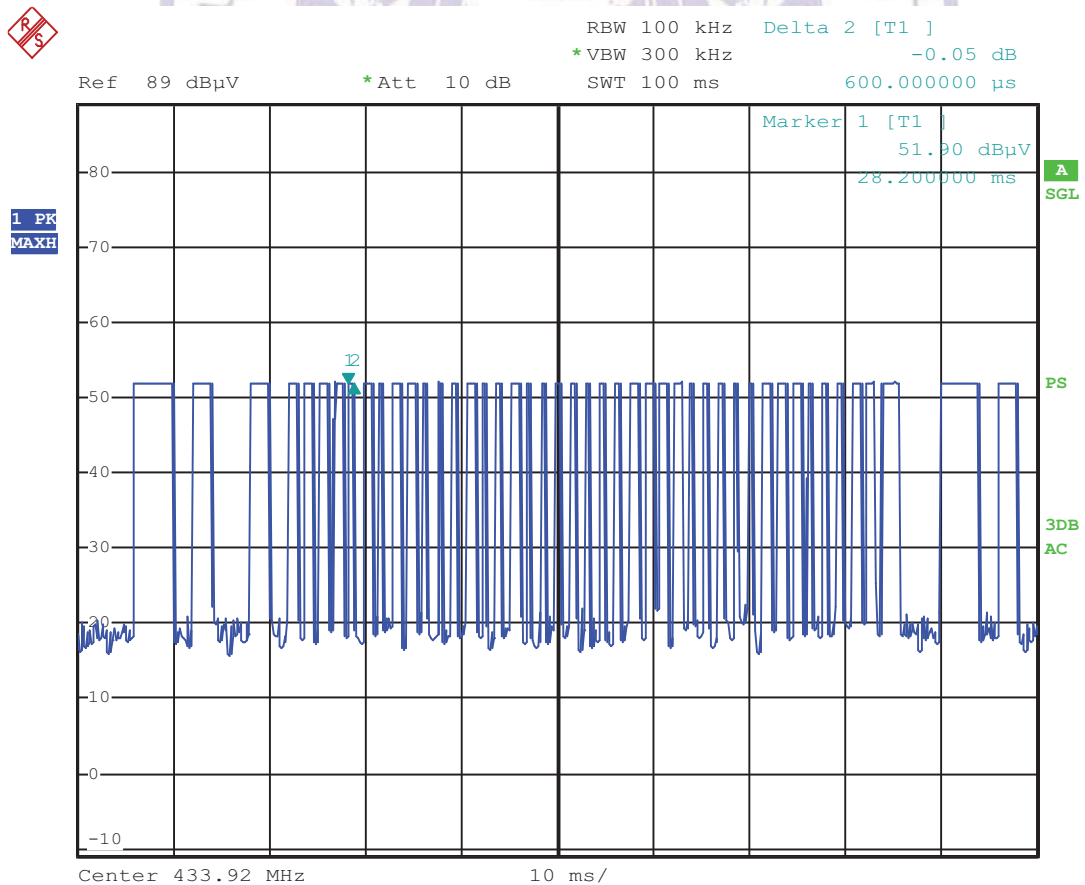
(4ms burst 2pcs)



(2ms burst 4pcs)



(1ms burst 18pcs)



(0.6ms burst 22pcs)

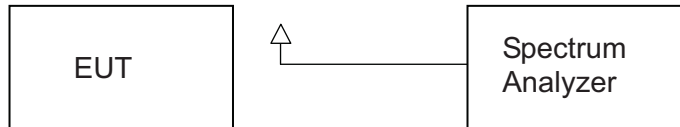
3.3. Occupied Bandwidth Measurement

Limit

According to 47 CFR 15.231(c) The bandwidth of the emission shall be no wider than 0.25% of the centre frequency for devices operating above 70MHz and below 900MHz. Bandwidth is determined at the points 20dB down from the modulated carrier.

According to RSS-210 Annex 1 A1.1.3 the 99% bandwidth shall be no wider than 0.25% of the centre frequency for devices operating between 70 MHz and 900 MHz

Test Configuration



Test Procedure

The 20dB bandwidth and 99% bandwidth is measured with a spectrum analyzer connected via a receive antenna placed near the EUT while the EUT is operating in transmission mode.

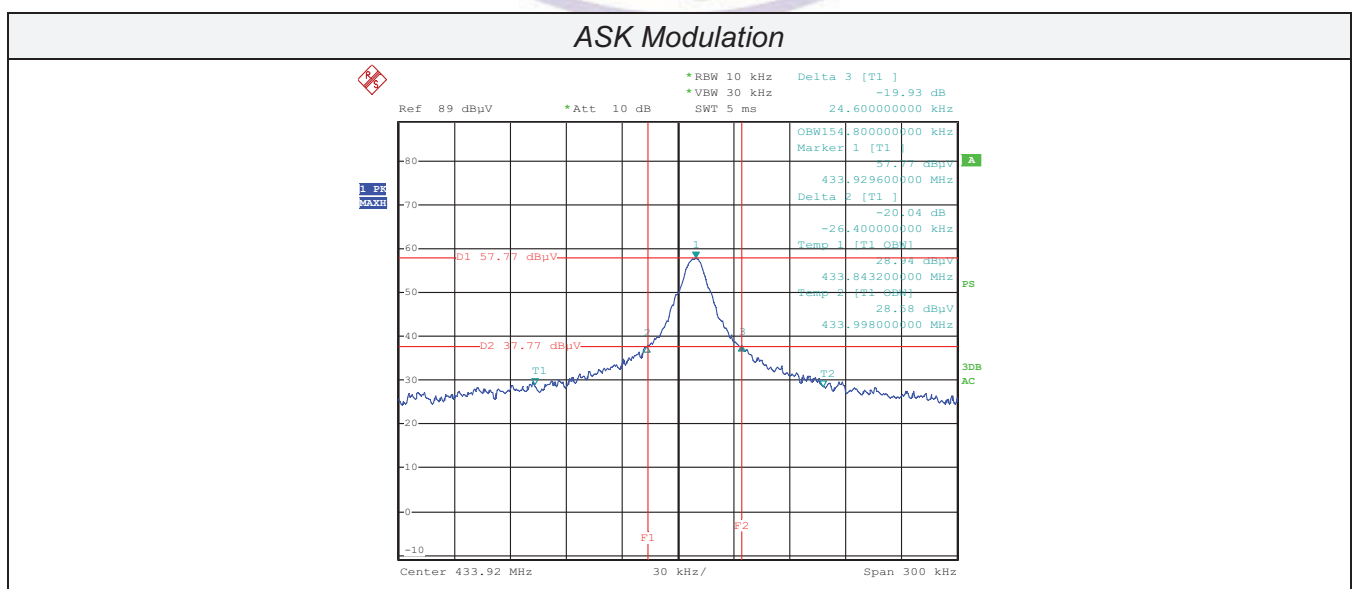
The 20dB bandwidth is defined as the total spectrum the power of which is higher than peak power minus 20dB.

The occupied bandwidth (OBW), that is the frequency bandwidth such that, below its lower and above its upper frequency limits, the mean powers radiated are each equal to 0.5 percent of the total mean power radiated by a given emission.

Test Results

Modulation	Channel Frequency (MHz)	99% OBW (MHz)	20dB bandwidth (MHz)	Limit (KHz)	Result
ASK	433.92	0.1548	0.051	$0.25\% \times 433.92 = 1084.8$	Pass

Test plot as follows:

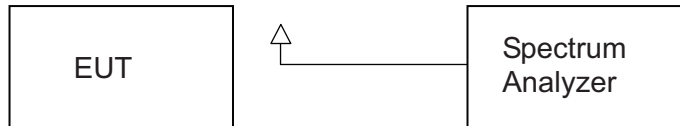


3.4. Deactivation Time

Limit

According to FCC §15.231(a)(2) and RSS-210 A1.1.1(b), A transmitter activated automatically shall cease transmission within 5 seconds after activation.

Test Configuration



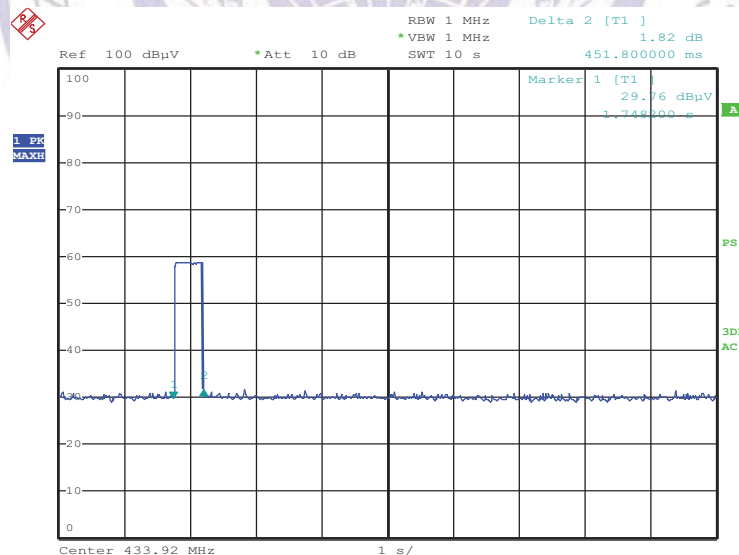
Test Procedure

1. The EUT was placed on a wooded table which is 0.8m height and close to receiver antenna of spectrum analyzer.
2. The spectrum analyzer resolution bandwidth was set to 1 MHz and video bandwidth was set to 1 MHz to encompass all significant spectral components during the test. The spectrum analyzer was operated in linear scale and zero span mode after tuning to the transmitter carrier frequency.

TEST RESULTS

Note: The transmitter was automatically activated, and the carrier frequency 433.92MHz:

Frequency (MHz)	One transmission time (S)	Limit(S)	Result
433.92	0.4518	5	Pass



3.5. Antenna Requirement

Standard Applicable

According to FCC Part 15C 15.203

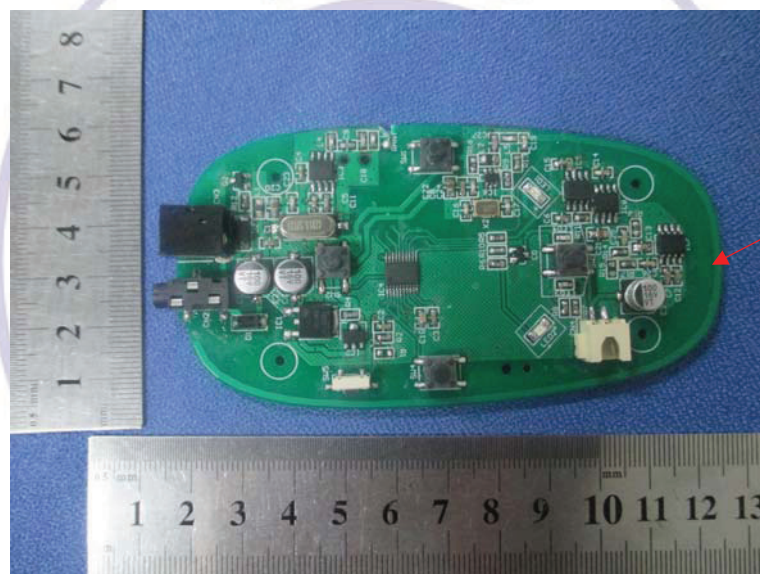
- a) An intentional radiator shall be de-signed to ensure that no antenna other than that furnished by the responsible party shall be used with the device.
- b) The manufacturer may design the unit so that a broken antenna can be replaced by the user, but the use of a standard antenna jack or electrical connector is prohibited.

Refer to statement below for compliance.

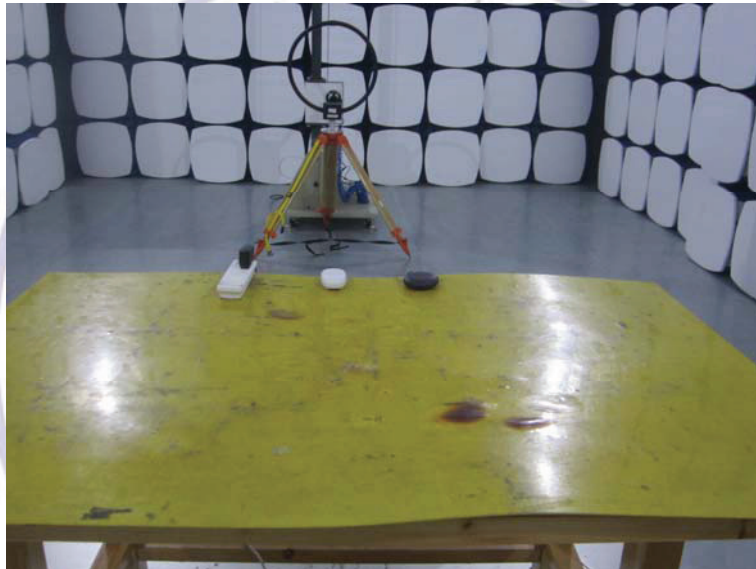
The manufacturer may design the unit so that the user can replace a broken antenna, but the use of a standard antenna jack or electrical connector is prohibited. Further, this requirement does not apply to intentional radiators that must be professionally installed.

Antenna Connected Construction

The antenna used in this product is an internal Antenna, The directional gains of antenna used for transmitting is 0 dBi.



4. Test Setup Photos of the EUT





5. External and Internal Photos of the EUT

External Photos of EUT

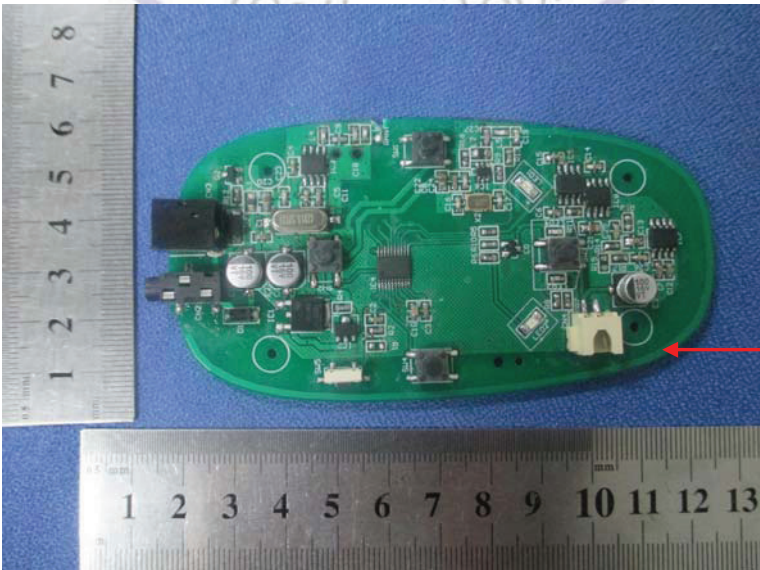
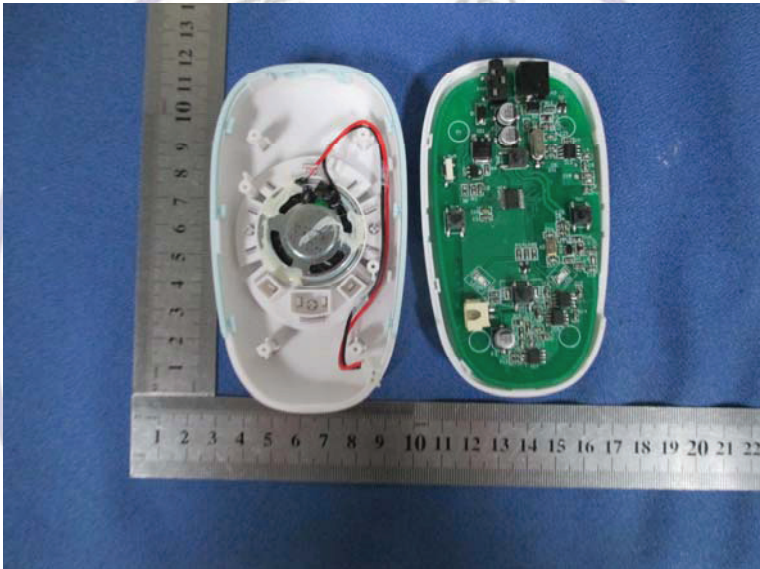




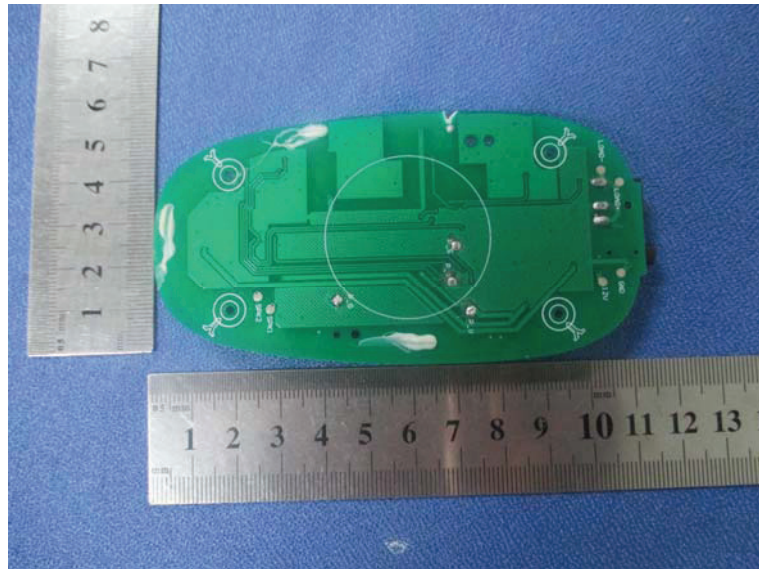




Internal Photos of EUT



Antenna



***** End of Report *****