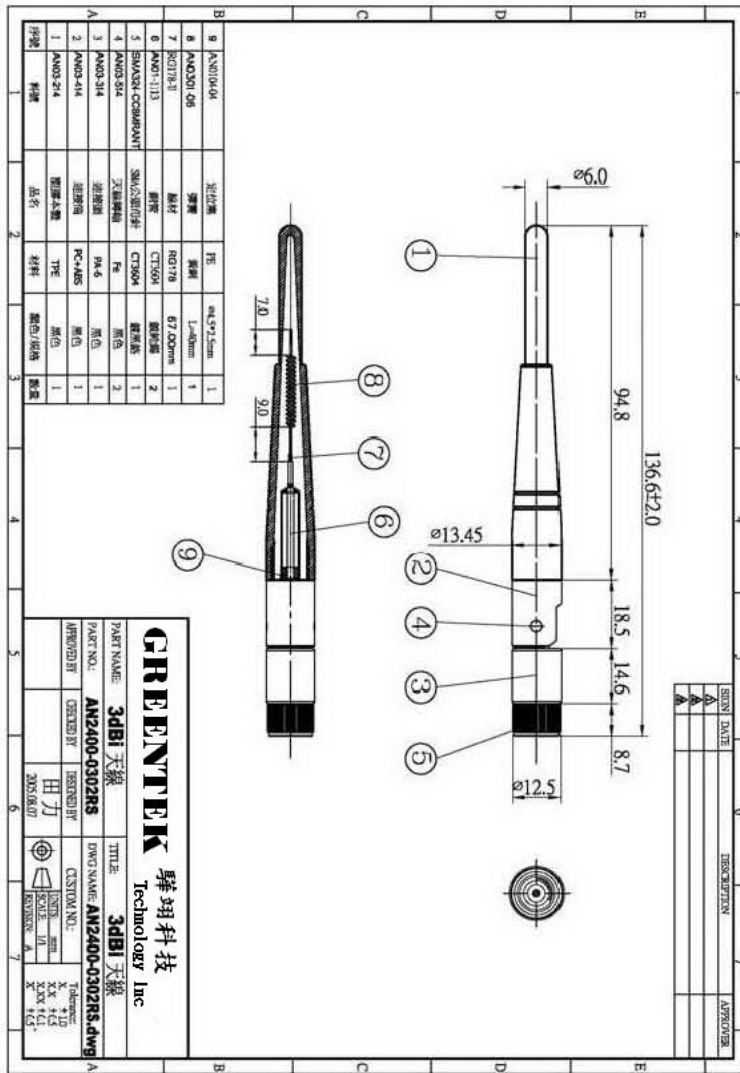


1. Mechanical Dimension Drawing



Product Number: R-AN2400-0302RS
Product Name: 2.4 GHz External Antenna

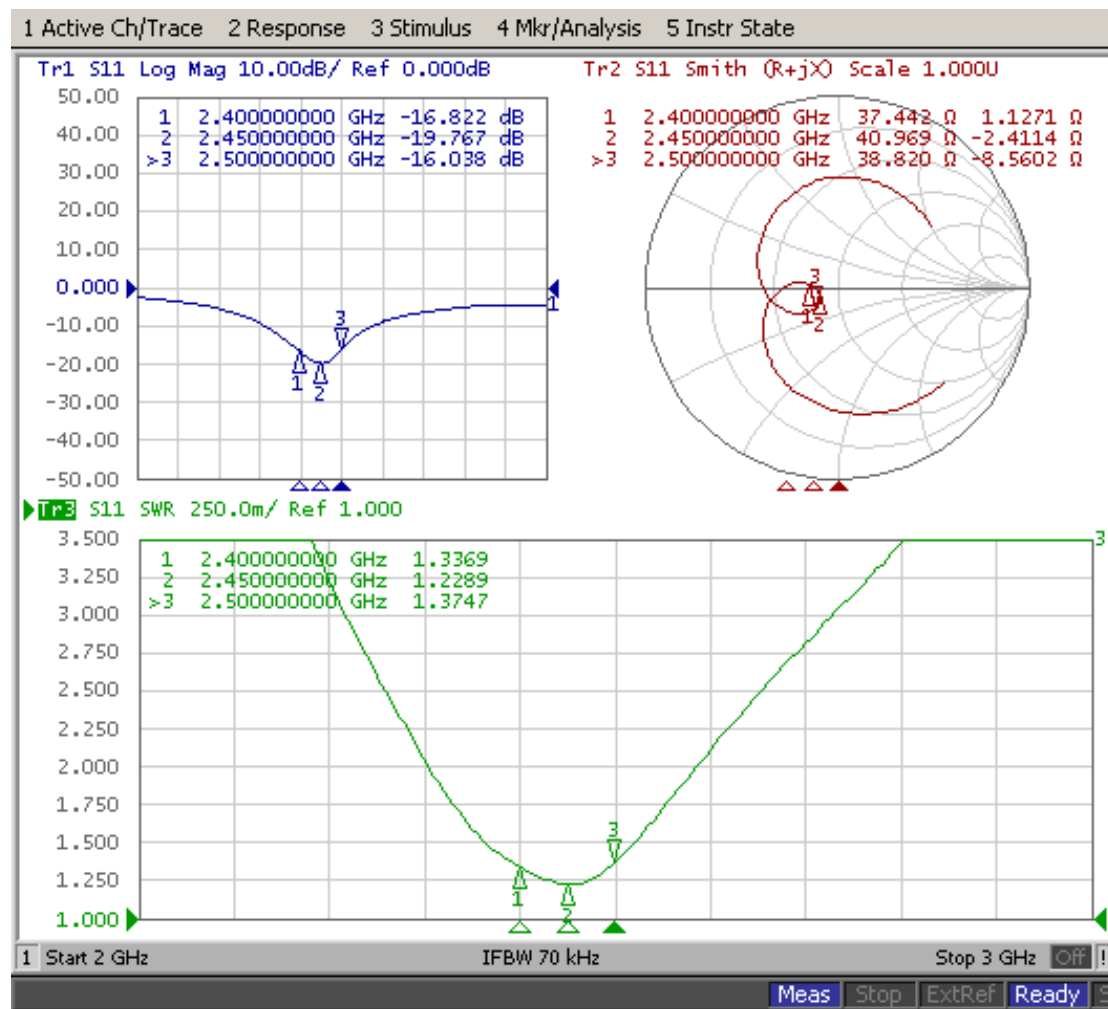
2. Technical Specification

A. Electrical Characteristics	
Working Frequency Range	2400 ~ 2500 MHz
S.W.R.	< 2.0
Antenna Gain.	3.0 dBi
Antenna Radiation Pattern	Omni-directional
Impedance	50 ohm
B. Material	
Color of Outer Cover	Black
Material of Outer Cover	TPE
Material of Hinge	PA-6
Material of Base	PA-6
Connector Type	50 Ohm SMA Male Reverse, Black Plated
Tube	Copper (C3604)
Total Length	109 mm
C. Environmental	
Operation Temperature	- 30 °C ~ + 85 °C
Storage Temperature	- 30 °C ~ + 85 °C

Product Number: R-AN2400-0302RS
Product Name: 2.4 GHz External Antenna

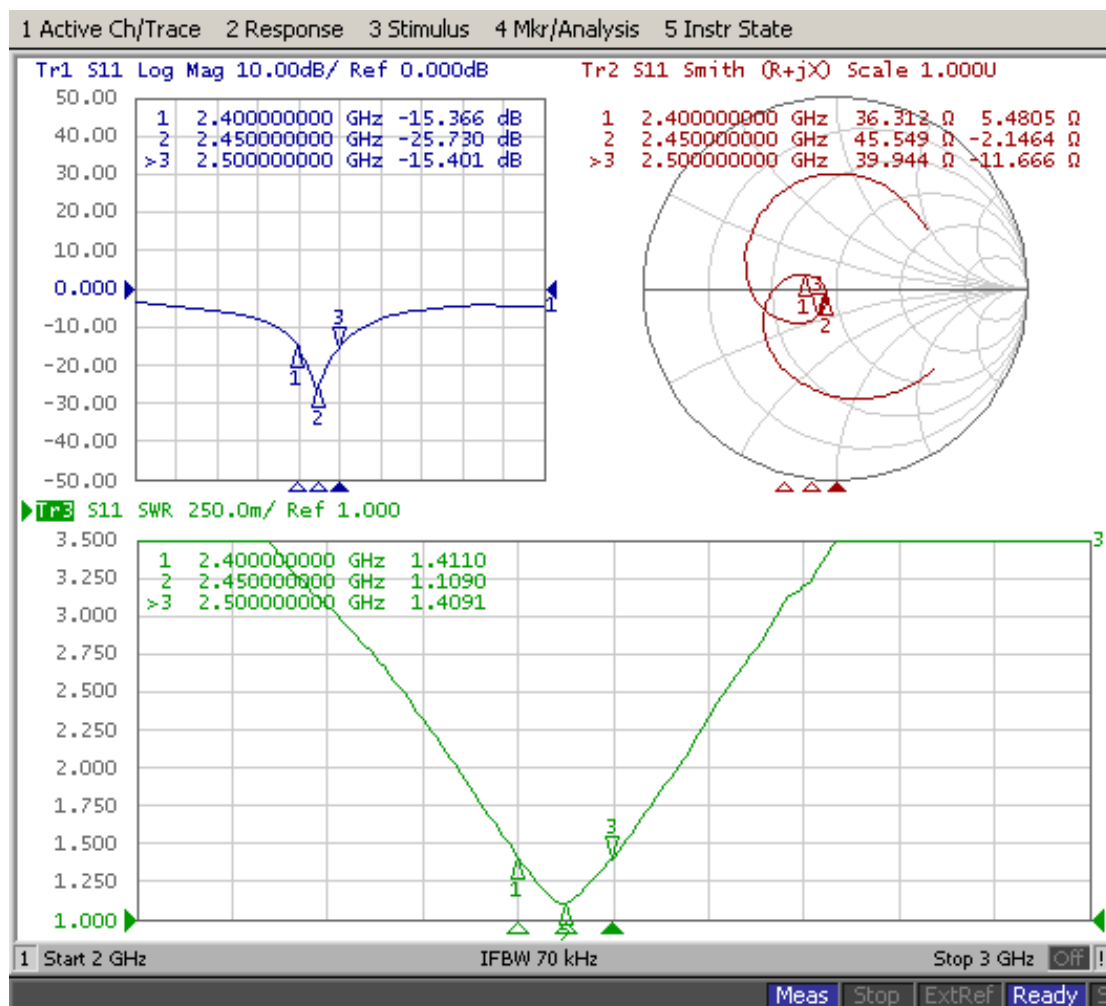
3. S11 Return Loss / S.W.R. / Impedance Testing Result

Antenna Hinge is 90 degree



Product Number: R-AN2400-0302RS
Product Name: 2.4 GHz External Antenna

Antenna Hinge is 180 degree



Product Number: R-AN2400-0302RS
Product Name: 2.4 GHz External Antenna

4. Antenna Radiation Pattern

Testing Equipment Specification:

Antenna Anechoic Chamber Dimension: 8 x 4 x 4 m

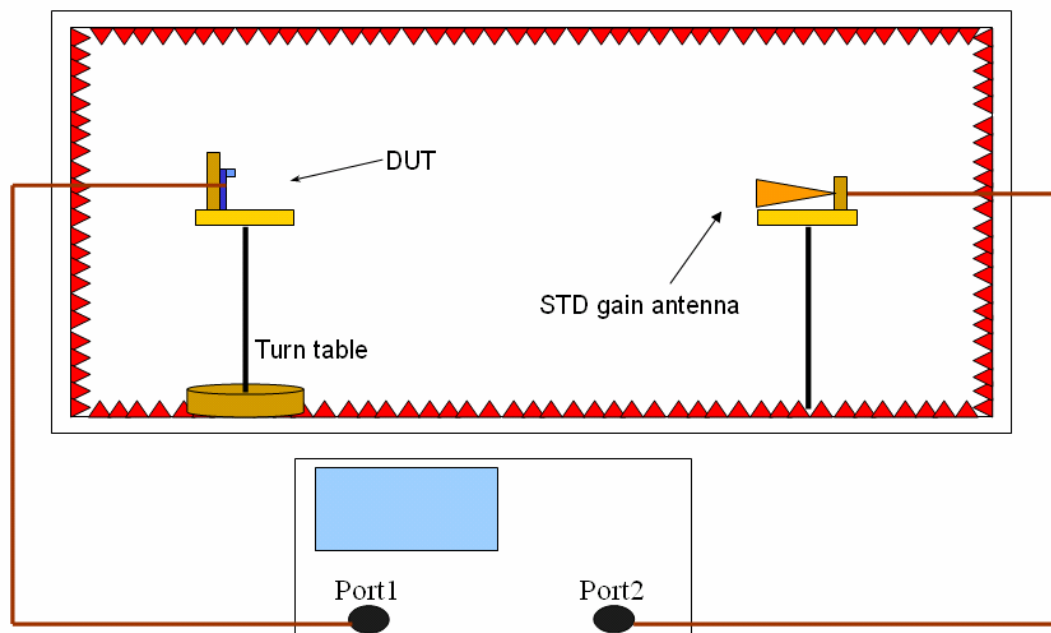
Quiet Zone: 600mm @1 GHz

Isolation: >100dB @ 1 MHz ~ 10 GHz

Testing Equipment: Agilent 8720D

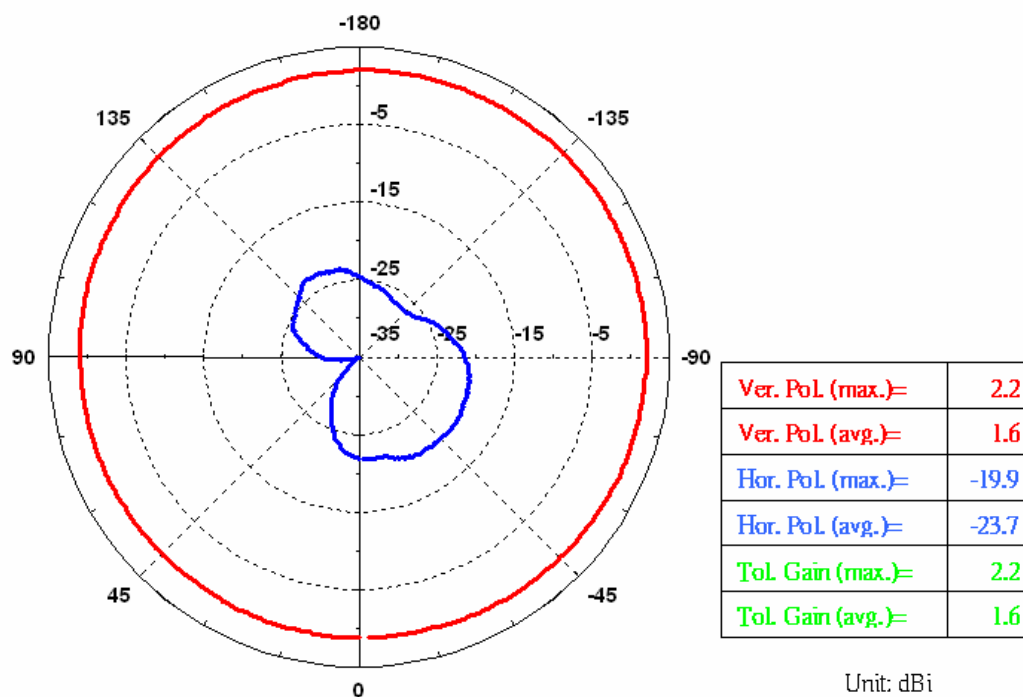
Received Antenna: 0.7~6.0 GHz for Gain Calibration

Double Ridged Horn Antenna

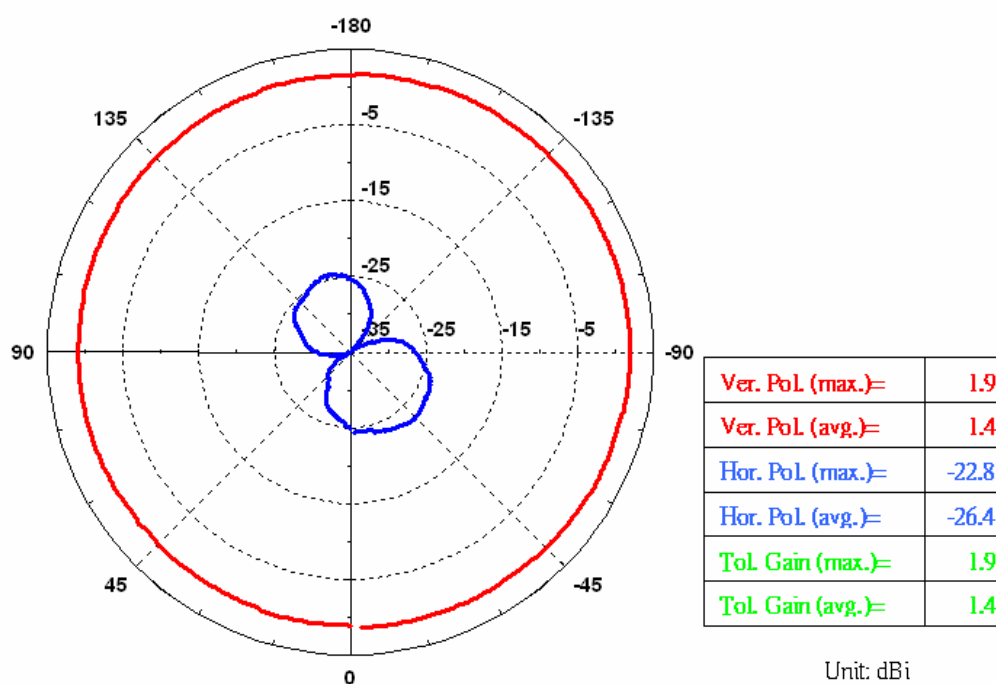


4-1. H-Plane

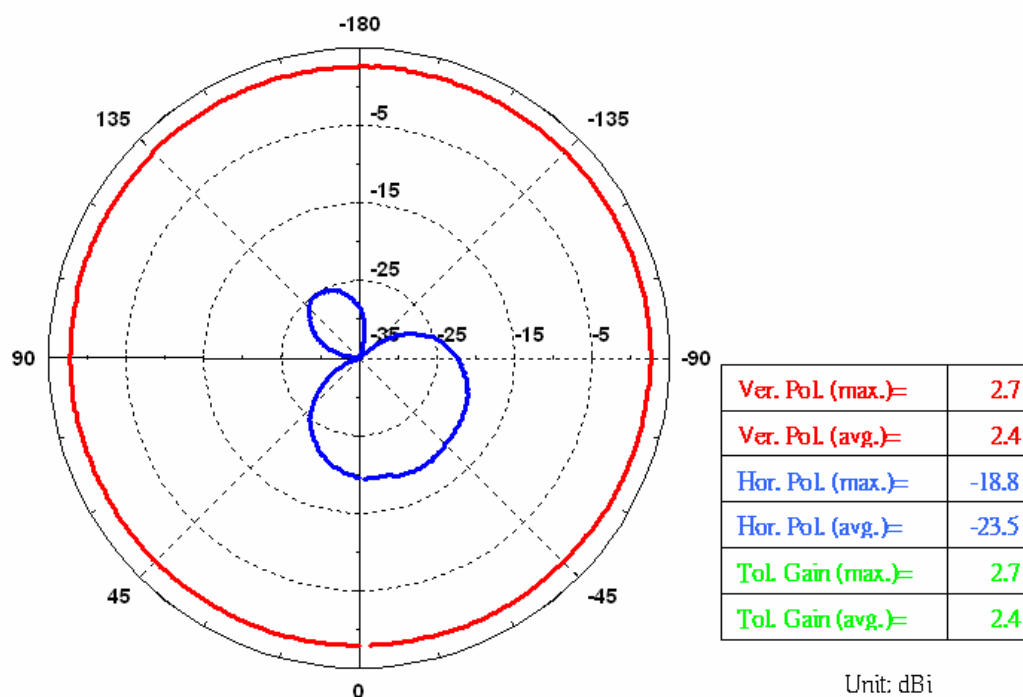
2400MHz Radiation Pattern



2450MHz Radiation Pattern

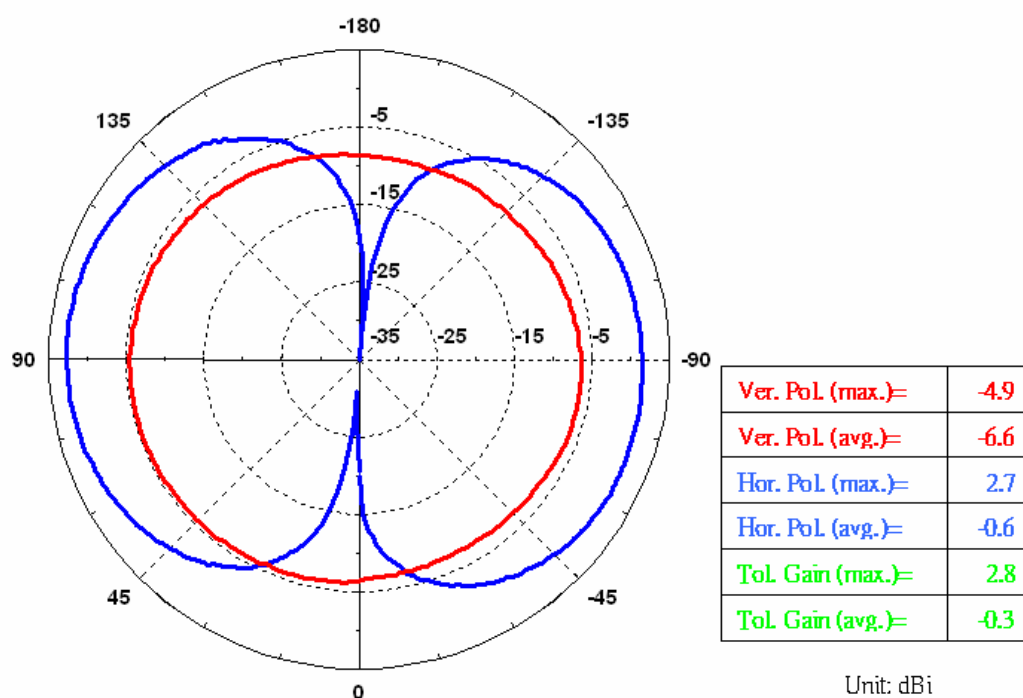


2500MHz Radiation Pattern

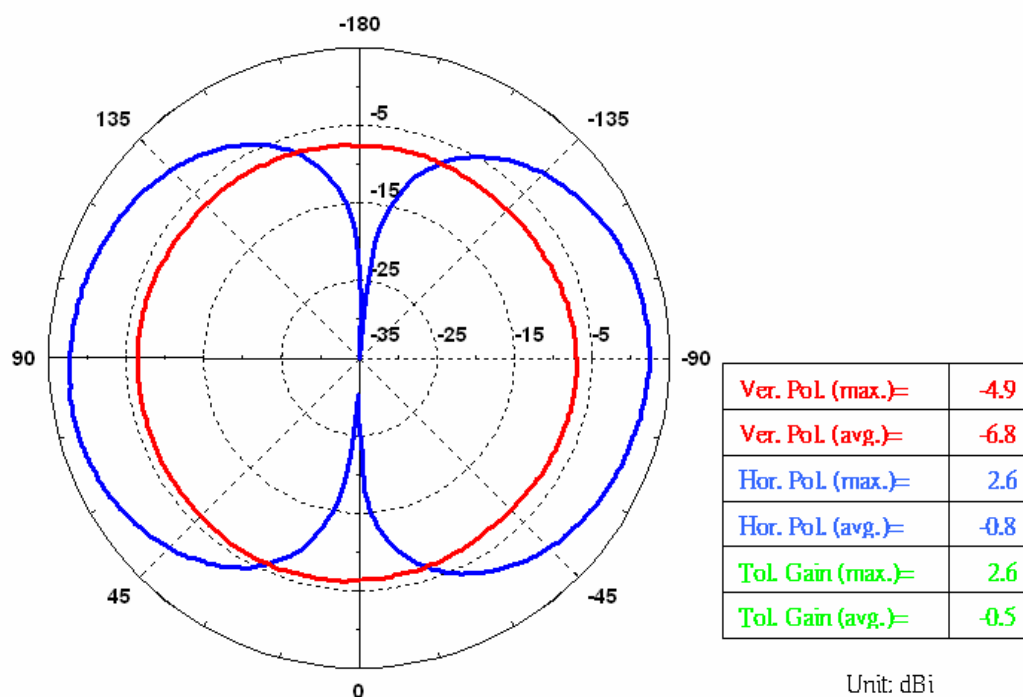


4-2. E-Plane

2400MHz Radiation Pattern



2450MHz Radiation Pattern



2500MHz Radiation Pattern

