

# Manual

## (U4Ria)

CAUTION: Changes or modifications not expressly approved by the manufacturer responsible for compliance could void the user's authority to operate the equipment

### WARNING

This device complies with part 15 of the FCC Rules. Operation is subject to the following two conditions: (1) This device may not cause harmful interference, and (2) this device must accept any interference received, including interference that may cause undesired operation.

### INFORMATION TO USER:

This equipment has been tested and found to comply with the limit of a Class B digital device, pursuant to Part 15 of the FCC Rules. These limits are designed to provide reasonable protection against harmful interference in a residential installation. This equipment generates, uses and can radiate radio frequency energy and, if not installed and used in accordance with the instructions, may cause harmful interference to radio communications. However, there is no guarantee that interference will not occur in a particular installation; if this equipment does cause harmful interference to radio or television reception, which can be determined by turning the equipment off and on, the user is encouraged to try to correct the interference by one or more of the following measures:

1. Reorient / Relocate the receiving antenna.
2. Increase the separation between the equipment and receiver.
3. Connect the equipment into an outlet on a circuit different from that to which the receiver is connected.

Consult the dealer or an experienced radio/TV technician for help

## 1. Features

### A. Functions

- ① MP3 Player
- ② FM Radio.
- ③ Voice Recorder (Voice Activity Detection )
- ④ Encoder (from CD/MD/radio/Internet/TV )
- ⑤ Mass Storage (128/256/512 Mega Bytes Built in Memory)

### B. Product Specification

- ① Format : MPEG1,2, Layer 3, WMA
- ② Memory Capacity: 128/256/512MB built in Memory
- ③ Communication Method : Supporting USB 1.1(plug & play)
- ④ LCD : 4 Line 128\*64 Full Dot Matrix, Sky Blue EL Back Light
- ⑤ Language : English, Chinese, Japanese, Korean
- ⑥ Transport Speed : 4.8MBps
- ⑦ Earphone Output Power : 15mW+ 15mW
- ⑧ Noise : 97dB
- ⑨ Supporting OS : Windows98/ SE, ME, 2000, XP
- ⑩ Battery : AAA 1EA (10Hours duality)
- ⑪ Dimension : 72\*39\*16mm, g(without battery)
- ⑫ FM Frequency Range : 87.5~108.0MHz

### C. Included Accessories

- ① Digital Audio Player
- ② Earphone
- ③ User Manual
- ④ One AAA size Battery
- ⑤ USB Cable
- ⑥ Audio Cable
- ⑦ Installation CD
- ⑧ Clip

D. Name and Functions

- ① Earphone Jack
- ② Line-in Jack
- ③ Built in Microphone
- ④ LCD Display Panel
- ⑤ Battery Case
- ⑥ 5-Way Multi Switch
- ⑦ USB Connection Terminal
- ⑧ Jog Switch
- ⑨ FM/A-B Button
- ⑩ Recording Button
- ⑪ Hold Button

E. Battery

- ① Slide and lift the battery compartment lid.
- ② Insert battery with correct polarity, and close the lid.

F. LCD Panel (MP3 Playing)

- ① Battery Icon
- ② Status (▶:Play, ●:Recording/Encoding, ||:Pause)
- ③ EQ (Normal, Classic, Live, Popular, Rock)
- ④ Hold
- ⑤ Mode (Play All Tracks, Repeat All, Repeat One, Random Order)
- ⑥ Volume
- ⑦ Singer
- ⑧ Title
- ⑨ File No
- ⑩ A-B Repeat
- ⑪ Playing Time

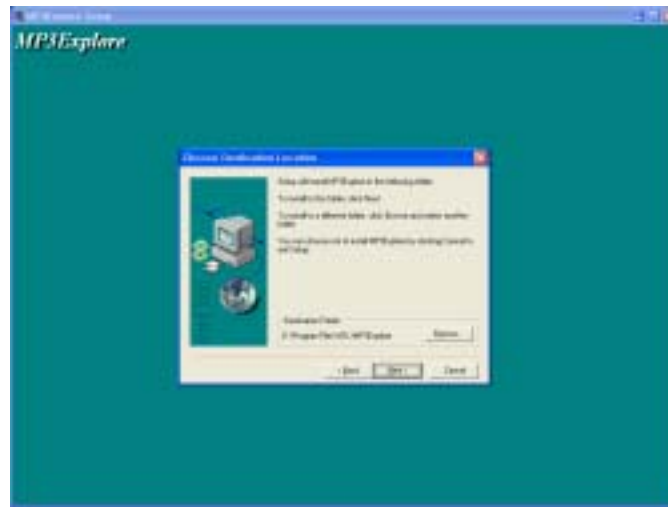
## 1. Program Installation

### A. MP3 Explore Installation Method

- ① For Firm Ware Upgrade of <U4Ria> program must be installed.
- ② Windows 98, Windows Me, Windows XP users : Choose the directory “SetupWTCC730USB\_DriverWinstall98MeXp.bat” from Installation CD to install and double click.
- ③ Windows 2000 Users: Choose the directory “install2000.bat” from Installation CD and double click.
- ④ If you insert the CD to CD-ROM drive, the installation program starts automatically. Click “Install Software” to start installation.
- ⑤ The Setup file is executed automatically. Click “Next” at the instruction of the program.



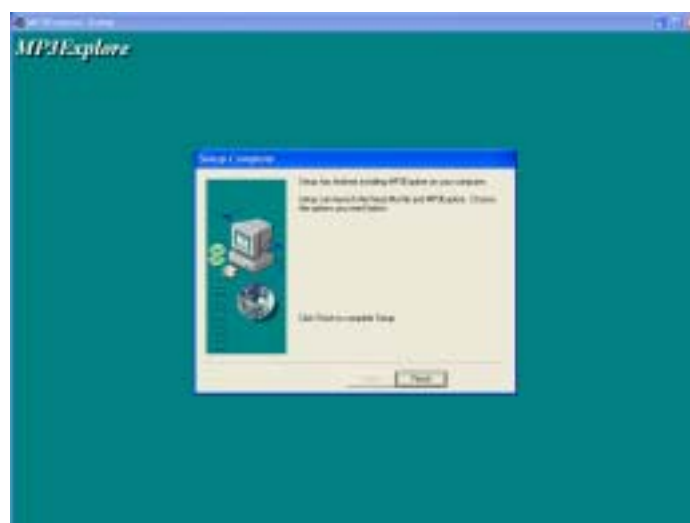
- ⑥ If you insert the CD to your PC, but it is not executed automatically, search the CD, and click “Setup.exe” file from “Setup” folder.
- ⑦ Choose the directory to install the Explore and click “Next”.



⑧ Select the Program Folder and click “Next”.



⑨ If you see the message that Installation is finished click “Finish”.



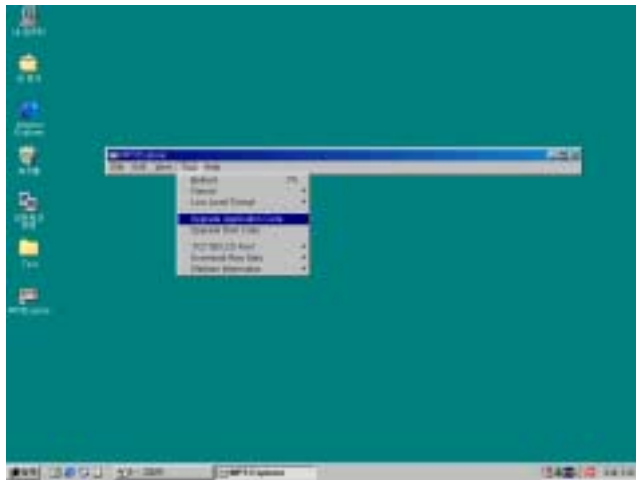
⑩ When using Explore, double click the icon on screen or run it from

starting menu.

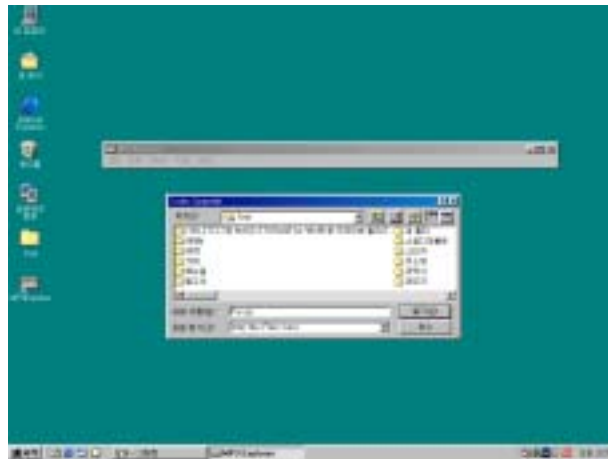
- ① To remove the program, run "add/remove the program" at control menu of Windows and remove "MP3 Explore".

#### B. Firm Ware Upgrade Method

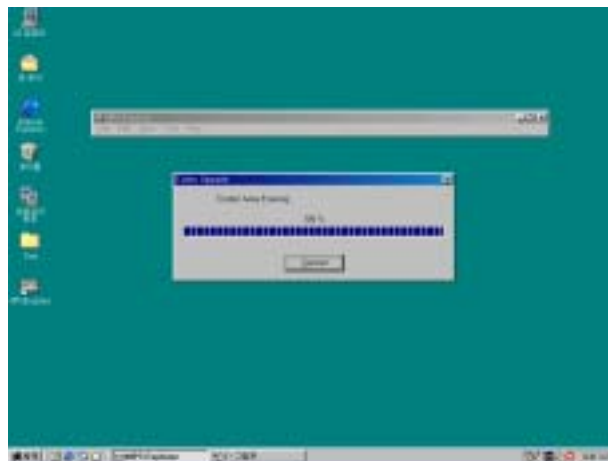
- ① Turn on U4Ria, and on the Menu press [Play/Pause] Key on "F/W Upgrade" mode.
- ② When it appears "Not Connect" message, connect the USB cable to PC.
- ③ With the "Connected" message you can execute the program.



- ④ Select "Tool" on Menu Bar and run "Upgrade Application Code", and choose file and click "open".



⑤ Can see the Progress of Upgrading.



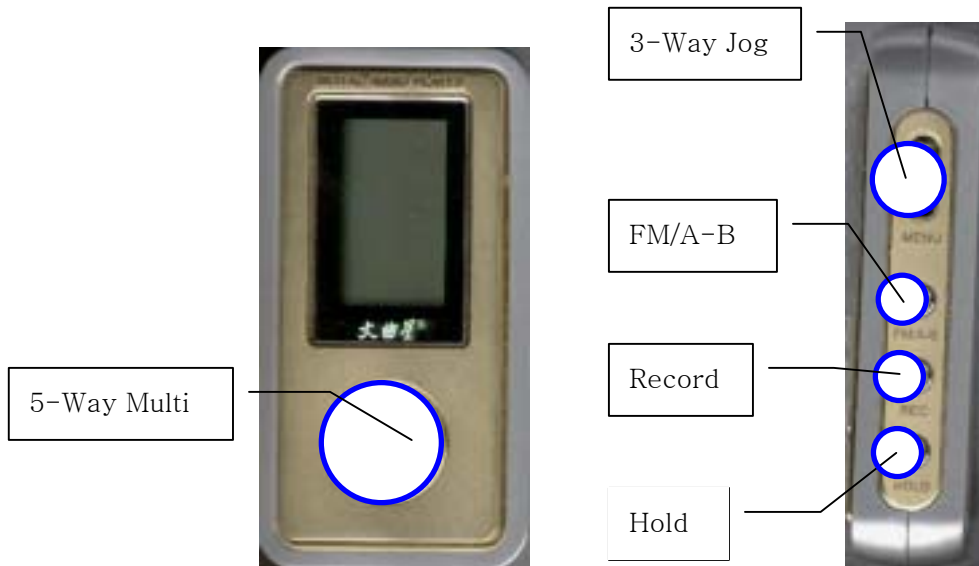
⑥ When Upgrading is finished, the program is automatically finished.

### C. Mass Storage Program Installation Method

- ① Windows 2000, Windows XP Users: You don't need extra Program to install. Just turn on U4Ria and connect to PC, it is automatically acknowledged as moving storage, and you can use it freely.
- ② Windows 98, Windows Me Users: Search the Installation CD, and double click "TCC730\_Win\_MassDriver\_IntallerW730inst.bat". Then the Program will be installed automatically.
- ③ Just turn on U4Ria and connect to PC, it is automatically acknowledged as moving storage, and you can use it freely

## ● How to Use U4Ria

### 1. Key Definition:



#### A. 5-Way Multi Key

- ① Push : Power On/Off, Play/Pause, Stop
- ② ▼ : FF, Frequency Search, Menu Select
- ③ ▲ : REW, Frequency Search, Menu Select
- ④ + : Volume Up and Menu Item Select
- ⑤ - : Volume Down and Menu Item Select

#### B. 3-Way Jog Key

- ⑥ Push : Menu Selection
- ⑦ ↑ : Equalizer Selection (Normal, Classic, Live, Pop, Rock), Mode Selection (Play All Tracks, Repeat All, Repeat One, Random Order )
- ⑧ ↓ : EL(10Sec), Speed Selection (Speed 1~5, Speed Normal)

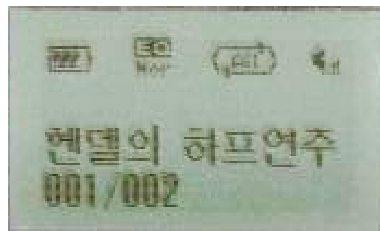
#### C. Other Keys

- ⑨ FM/A-B
- ⑩ Recording
- ⑪ Hold

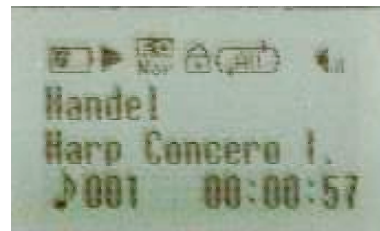


## 2. Power On/Off

- A. Power On: Press the ① Key 2-3 seconds to turn on the power ( it will remain in Stop ).
- B. Power Off: Press the ① Key 2-3 seconds in Stop mode.  
If the unit is in Stop mode more than 1 minute, it will automatically turn off the power.



Stop



Play

## 3. Selecting Menu and Descriptions:

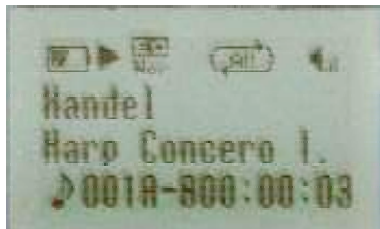
During the MP3 Mode is in Stop, press the ⑥ button shortly, and Choose Items with ②, ③, and adjust with ④, ⑤ Key.

- LCD Contrast: adjust LCD's brightness
- Music Source: Select the Source in Recording
  - Line In : use to Encoding
  - MIC : use to Voice Recording
- MPEG Mode: File Formatting in Recording
  - MPEG1 Layer 2
  - MPEG1 Layer 3
  - MPEG2 Layer 3
  - MPEG2.5
  - TVF
  - ADPCM
- SYNC: Selecting the Track in Encoding
  - Off
  - 1 Sync : Only 1 Track select form CD to Encoding
  - On : Select all files on CD to Encoding and match to CD Track

- VAD (Voice Activity Detection): Recording only when there is sound or voice
  - Off
  - On
- Sample Freq: Adjust the File's Frequency which is created in Recording
- Channel Mode
  - Mono
  - Stereo
  - Joint Stereo
- Bit Rate: Adjust the Bit Rate of the File in Recording
- Silence: Adjust the Level of Silence when using the Sync and VAD mode
  - MID Level
  - Low Level
  - High Level
- REC Memory: Show the type of Memory which is using
  - INT Flash
- Memory-INT
  - Total : the amount of Total Memory
  - Remain : the amount of Remain Memory
- Language
  - Korean
  - Chinese-TRAD
  - Chinese-SIMP
  - Japanese
  - English
- Format
  - INT Flash
- Low Format
  - INT Flash
- Erase 1 File: Select 1 File to Erase
  - Choose the File with "+,-" button and Erase with the Play/Pause Key
- Erase All: Erase All Files
- F/W Upgrade: Firm Ware Upgrade Mode
  - Enter: Play Key

## 4. MP3 Play Mode

- A. Power ON: Press the ① Key shortly in Stop mode and use Play/Pause Toggle to Play.
- B. Power Off: Press the ① Key shortly to stop in Play mode.
- C. Selection: Press the ② (▼), ③ (▲) Key shortly during Playing
- D. FF, REW: Press the ② (▼), ③ (▲) Key 2-3 seconds during Playing
- E. Volume: Press the ④ (+), ⑤ (-) Key shortly during Playing to increase or decrease the volume
- F. Volume: Press the ④ (+), ⑤ (-) Key 2-3 seconds during Playing to increase or decrease continuously
- G. FM Mode/ A-B Mode: Press the ⑨(FM/A-B) Key 2-3 seconds in Stop Mode change FM Mode to A-B Mode
- H. A-B Repeat Mode: For A-B Repeat Mode Press the ⑨ (FM/A-B) Key shortly during Playing mode to make A (starting point), and Press shortly again make B (ending point), then the player will repeat from A to B. If you Press the ⑨ (FM/A-B) Key shortly again it will stop repeating



- I. Equalizer Selection: Press the ⑦(↑) Key shortly in Playing mode to select EQ Mode
- J. Playing Mode Selection: Press the ⑦(↑) Key 2-3 seconds to select Playing mode
- K. Playing Speed Selection: Press the ⑧(↓) Key 2-3 seconds in Playing mode to select the Speed

## 5. FM Radio Mode

- A. FM Mode Selection: Press 2-3 seconds the ⑨ (FM/A-B) Key in Stop.
- B. Frequency Selection: Press the ② (▼), ③ (▲) Key shortly. The Frequency is increased or decreased by 0.1MHz range.
- C. Frequency Scanning: Press the ② (▼), ③ (▲) Key 2-3 seconds. To stop Press shortly the ① Key.
- D. Frequency Presetting (1~10):
  - ① Select your favorite Channel and Press the ⑦ (↑) Key 2-3 seconds. You can see '1' bottom on LCD.
  - ② You can add favorites Press the ②(▼), ③(▲) Key shortly and choose the number 1~10, and preset Press again the ⑦ (↑) Key 2-3 seconds.



## 6. Others

### A. Recording :

Press the ⑩ (REC) button shortly to choose Recording/Pause Toggle

- ① Voice Recording: Select [Music Source] on the Menu and choose [MIC], you can record.
- ② Encoding: Select [Music Source] on the Menu and choose [Line In], you can encode.

### B. Hold:

Press the ⑪ (Hold) button shortly to choose Hold/ Release Toggle

### C. Backlight

Press the ⑧ (↓) Key shortly, then EL Back Light operates during 10 seconds at any mode.

# 1. Trouble Shooting

If it appears that the U4Ria Player has a problem, check the followings before contacting customer service.

- A. The player does not work, or nothing is displayed on the LCD.
  - ① Check the general battery or the rechargeable battery level. The player requires one 1.5V AAA battery. Also check the polarity (+, -) of the battery installed.
  
- B. The U4Ria buttons do not work.
  - ① Check if the Hold button is pressed.
  
- C. Music is not played when pressing the Play button in MP3 mode.
  - ① Check if any file is saved in internal memory.
  - ② Check if the battery is correctly installed.
  - ③ Check the power is on.
  
- D. MP3 files cannot be downloaded.
  - ① Check if the U4Ria is properly powered on and if the USB cable is correctly connected to the USB port of the PC.
  - ② Check the battery is correctly installed.
  - ③ Check the USB port connection.

## Cautions:

Read the followings carefully with regard to care of your U4Ria Player.

### 1. **Avoid shocks or impacts.**

The U4Ria player can withstand light shocks from walking or exercise, but dropping it from a high altitude or inflicting a strong impact with a heavy object may damage the player.

### 2. **Prevent water from getting inside the unit.**

If water gets inside the unit, the internal parts may be damaged, causing player problems. Wipe water off the surface of the unit with a dry cloth promptly, and contact the service center.

### 3. **When storing the player:**

Keep the player in a place free of moisture, strong magnetism, or heat and remove the battery.

## Customer Service

### Product Information Service

If you have any problem in relation to the use of your U4Ria player, contact us via telephone, fax, or e-mail as follows:

Tel: 02-2677-2355 / Fax: 02-2672-6997 / Internet: <http://www>.

For more information about the U4Ria software or player, visit us at the following site:  
<http://www>.

## Warranty

### Free Service

If the product is found to be defective within one year after purchase (product warranty period), repair shall be provided at no charge.

### Not Repairable

- Failure due to Acts of God (fire, saline damage, gas earthquake, storm, flood, etc.)
- Failure due to abnormal power supply or accessory defects
- Replacement of consumable parts due to normal wear and tear
- Failure due to external causes other than an inherent product defect
- Failure caused by repair or remodeling done by someone other than the service technicians of VDL Ltd.

Matters not specified above shall be handled in accordance with the Customer Protection Regulations.

Customer Service Center:

Product Name:	Warranty Period
Model Name:	One Year
Date of Purchase:	
Customer Name:	Tel:
Address:	

VDL Ltd.

Please retain this warranty in a safe place. You will need to present the warranty with the date of purchase on it in order to ensure proper service.

1. The warranty for this product shall be limited within the scope described above.
2. The free warranty period is calculated from the date of purchase. Be sure to have your vendor enter the date of purchase on the warranty. (If the date of purchase cannot be proved, the warranty period shall be calculated from a date six months after the date of manufacturing.)

3. This warranty shall not be re-issued.

The appearance and the dimension of this product may be changed without notice to consumers in order to improve product quality.



## Service Policy

Type of Customer Complaints		Service Provided	
		Within Warranty Period	After Warranty Period
Defect in performance or functions that requires major repair, occurring during normal use within ten days from purchase		Replacement or Refund	Not Repairable
Defect of main parts found within one month from purchase		Replacement	
Repairable	When a failure occurs due to the same defect up to three times	Free Repair	Charged Repair
	When a failure occurs due to the same defect up to four times	Replacement or Refund	
Not Repairable	When repair cannot be done as the replacement part is available but cannot be fixed		Replacement after applying depreciation
	When repair cannot be done as the replacement part is not available		Refund after applying depreciation and add 10% of retail price
Defect in performance or functions caused intentionally by the user or user's negligence	Not Repairable	Replacement after applying charged repair	Refer to separate rules of VDL Ltd
	Repairable	Charged Repair	Charged Repair