

## Instructions for Viewing System FCC ID Label

1. Connect the RS-232 port on a laptop or other computer to the RS-232 serial console port of the BTS using a null modem cable. On the HP Proliant servers, the serial console port is located in the rear center of the server surrounded by a green label. The two figures below show the null modem cable connected to the serial console port on the HP Proliant server.



**Figure 1: Null modem cable connected to the serial console port of the HP Proliant server**



**Figure 2: Close-up of a null modem cable connected to the serial console port of the HP Proliant server.**

2. Turn on power to the BTS Server if it was turned off. Wait at least one minute for the server to finish booting.
3. Run a serial communications program such as HyperTerminal, bundled for free in Microsoft Windows systems, on the client laptop. Select to use the RS-232 port for communications (in HyperTerminal under Windows, this corresponds to selecting COM3 or another COM port in the initialization dialog box). Set the RS-232 port to 115200 bits per second, 8 data bits, no parity bits, 1 stop bit, and hardware flow control.
4. Press the Enter key in the active HyperTerminal session. The BTS will respond by printing out identifying information and prompting for a login. A screen shot of an example HyperTerminal session is shown below.

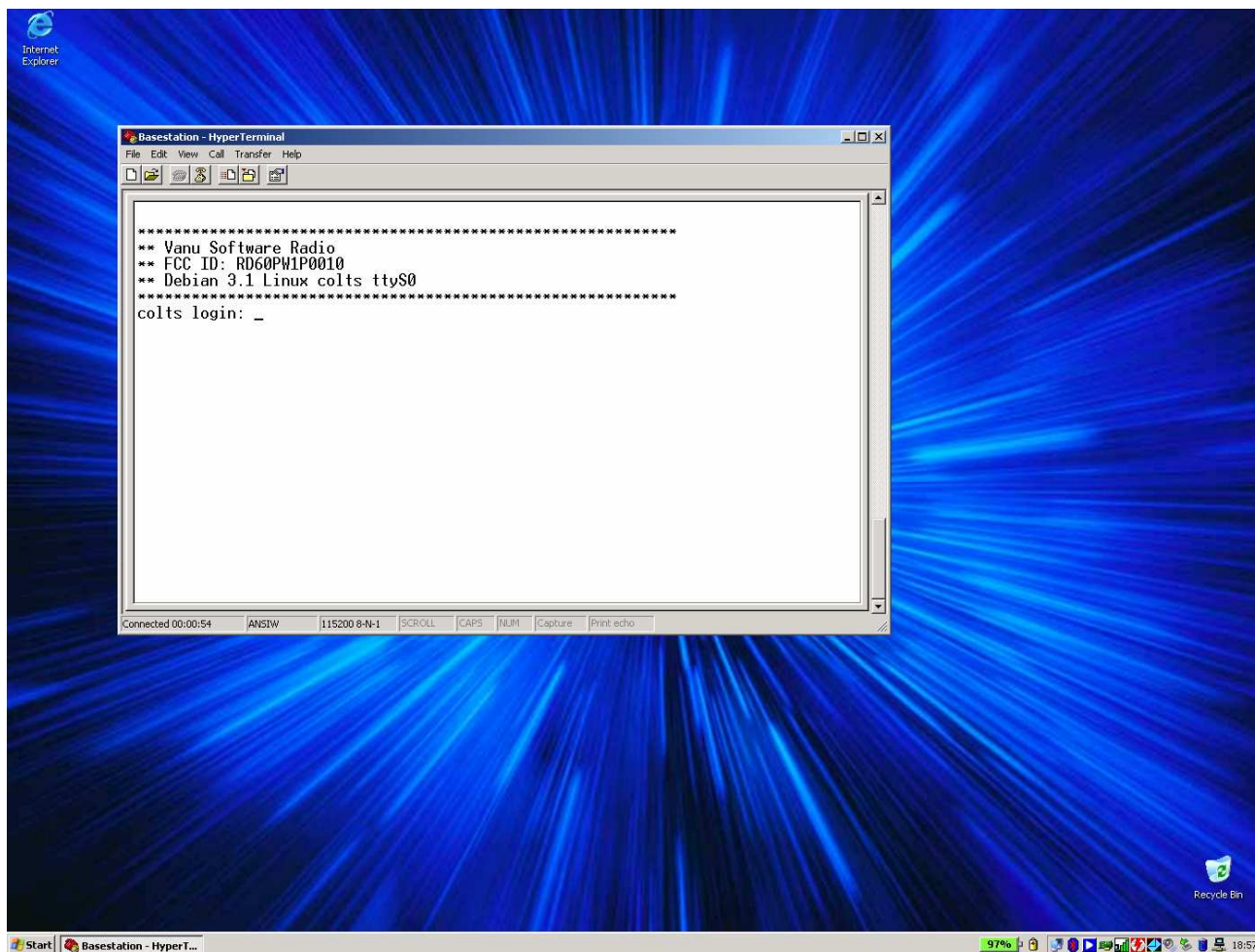


Figure 3: Screenshot of HyperTerminal view of system FCC ID