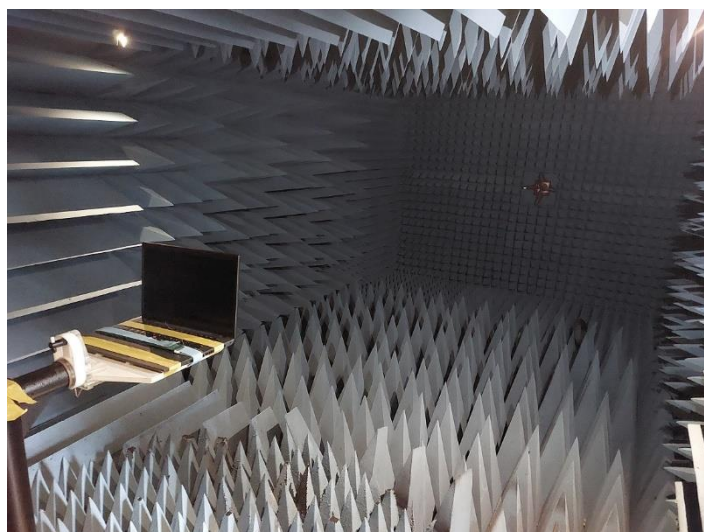


Annex A. Photographs

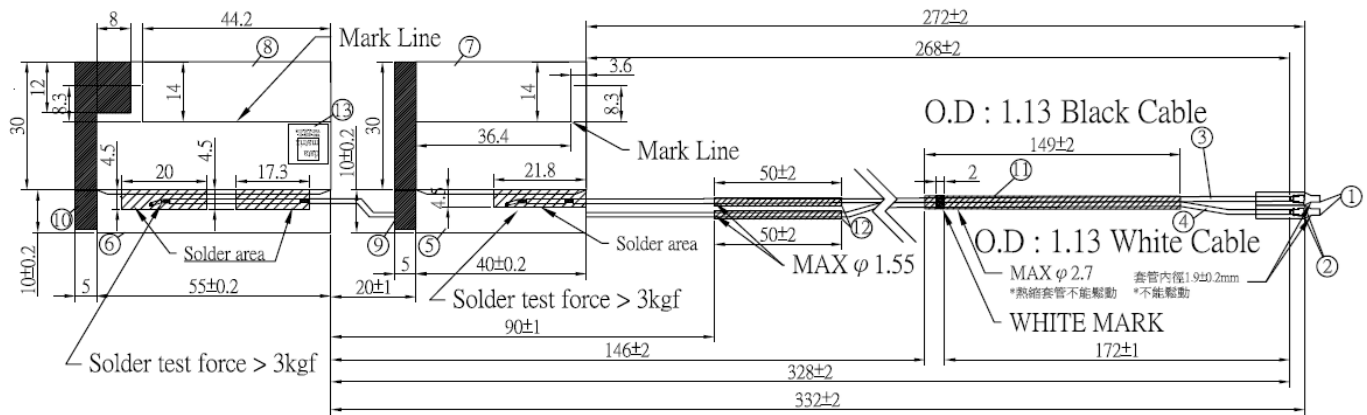
A.1 Setup Photo



A.2 Test sample

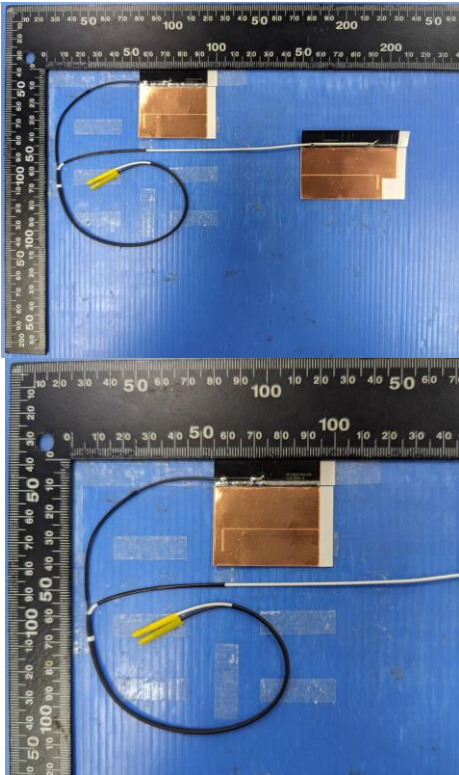
Main Antenna

Antenna Drawing

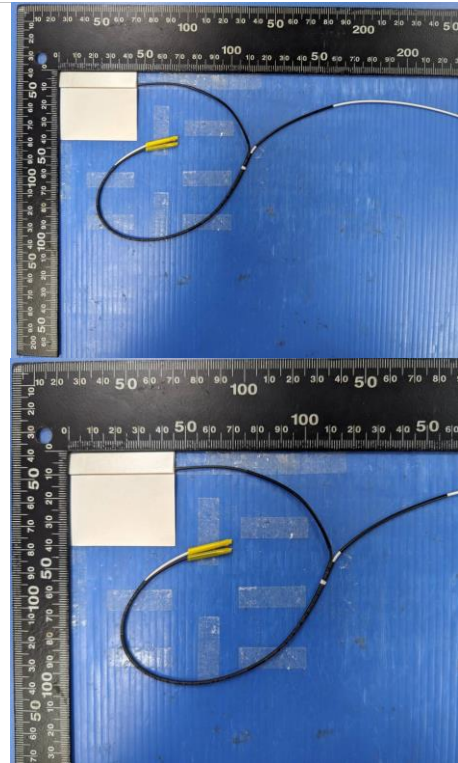


Antenna Photo

Front



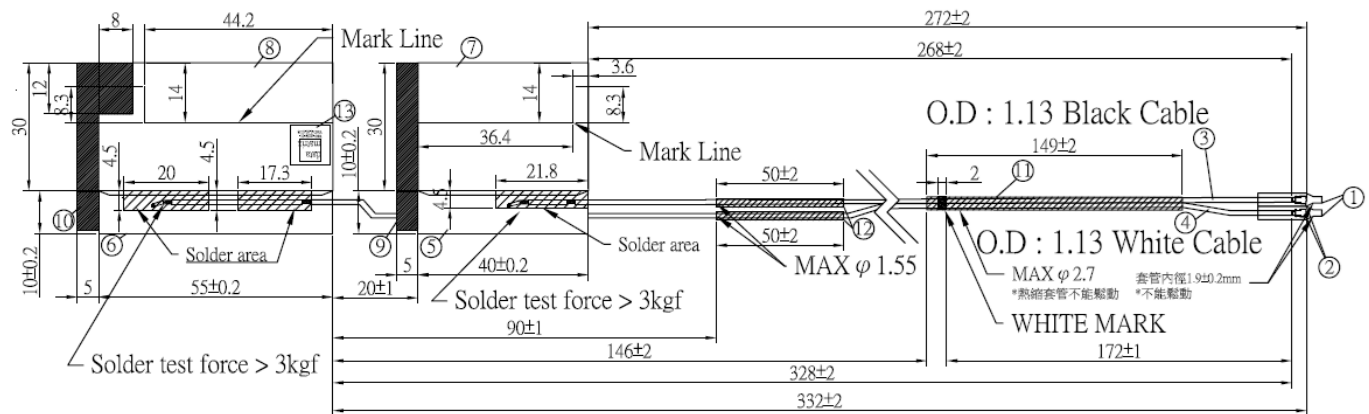
[Back](#)



Note: antenna photo should include L type ruler

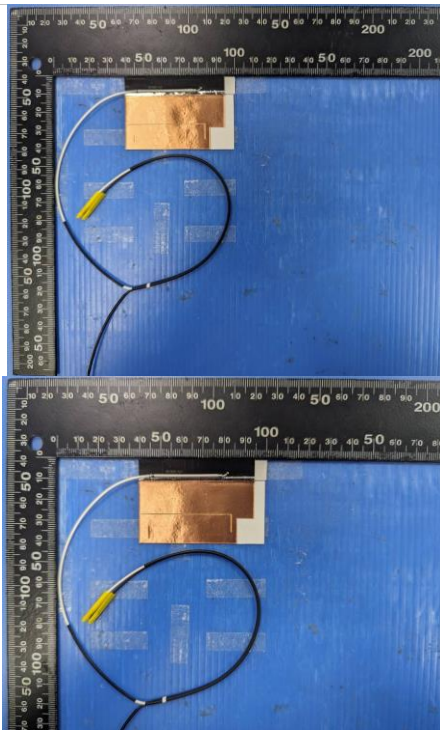
Aux Antenna

Antenna Drawing

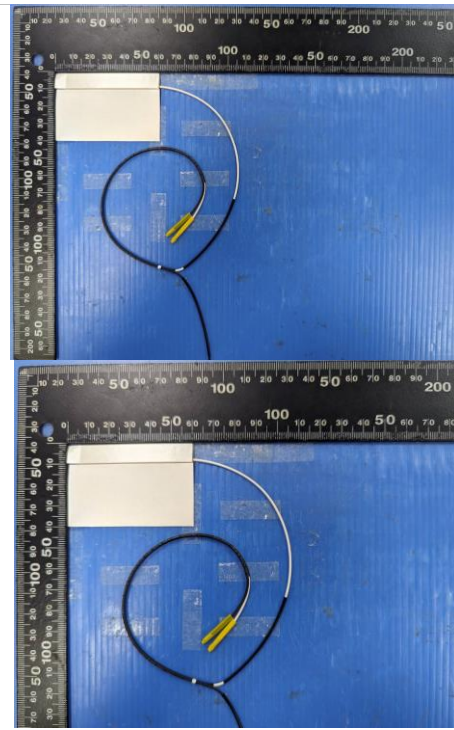


Antenna Photo

Front



Back



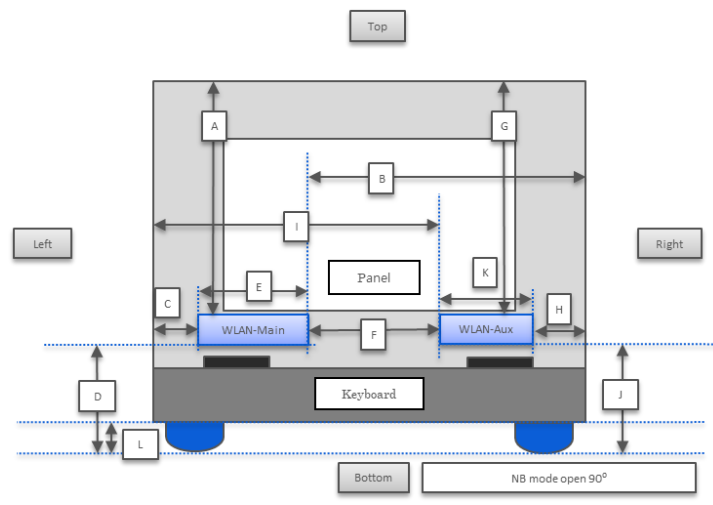
Note: antenna photo should include L type ruler

Annex B. Antenna Location

B.1 Antenna Host Platform Location Information

Include a dimensioned photo(s) or dimensioned drawing(s) of Main and Aux antenna placements (measurements are not required for receive-only antenna).

Any antenna that transmits must show dimensions to bottom of laptop. Provide a description of the materials that are used for supporting or surrounding transmit antennas; for example, non-conductive plastics vs. conductive coated plastic or metallic materials.



Minimum Separation Distance			
Item	Antenna	Position	Distance (mm)
A	WLAN-Main	to Top	222
B	WLAN-Main	to Right	316.95
C	WLAN-Main	to Left	130.55
D	WLAN-Main	to Bottom	12.95
E	WLAN-Main	Main Antenna Length	55
F	Main-Aux	Main to Aux	20
G	WLAN-Aux	to Top	222
H	WLAN-Aux	to Right	76.95
I	WLAN-Aux	to Left	205.55
J	WLAN-Aux	to Bottom	12.95
K	WLAN-Aux	Aux Antenna Length	40
L	NB	Bumper thickness	3.37

B.2 Antenna dimensional information for SAR evaluation

Include a dimensioned photo(s) or dimensioned drawing(s) showing the distance (mm) between the transmit antennas and the user. For notebook/laptop hosts show lapheld position (example below). For tablet hosts show all orientations including lapheld, primary & secondary portrait, primary & secondary landscape positions. Include a description of any proximity sensors or power throttling implementations that limit or exclude use of any host orientation.

Antennas on the panel section

