

Plots of System Verification

Appendix A. Plots of System Verification

The plots for system verification are shown as follows.

Plots of System Verification

Measurement Report

S01 System Check_H2450_240126

Device under Test Properties

Model, Manufacturer	Dimensions [mm]	IMEI	DUT Type
Dipole,	10.0 x 10.0 x 300.0		

Exposure Conditions

Phantom Section, TSL	Position, Test Distance [mm]	Band	Group, UID	Frequency [MHz], Channel Number	Conversion Factor	TSL Conductivity [S/m]	TSL Permittivity
Flat,	,		CW, 0--	2450.000, 0	7.71	1.83	39.9

Hardware Setup

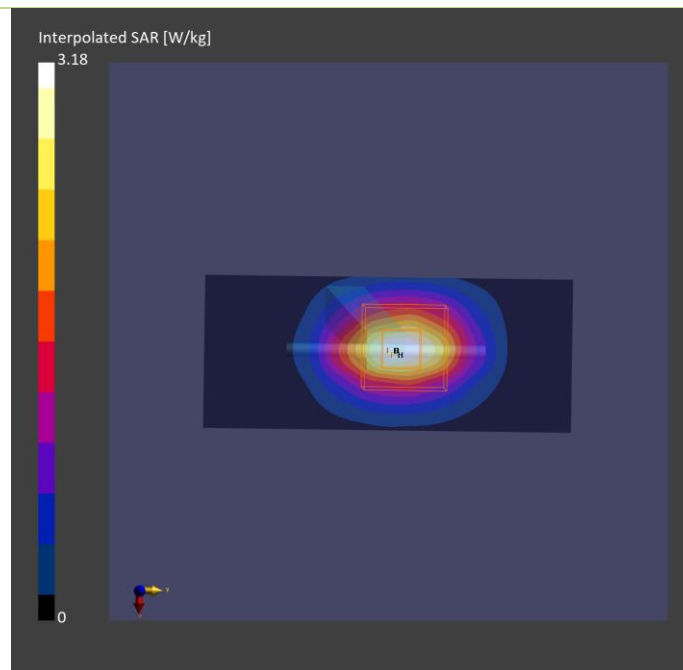
Phantom	TSL, Measured Date	Probe, Calibration Date	DAE, Calibration Date
Twin-SAM V8.0 (30deg probe tilt) - 1982	H06T27N6 , 2024-Jan-26	EX3DV4 - SN7554, 2023-09-19	DAE4 Sn1431, 2023-08-24

Scan Setup

	Area Scan	Zoom Scan
Grid Extents [mm]	40.0 x 96.0	35.0 x 35.0 x 30.0
Grid Steps [mm]	10.0 x 12.0	5.0 x 5.0 x 1.5
Sensor Surface [mm]	3.0	1.4

Measurement Results

	Area Scan	Zoom Scan
Date	2024-01-26	2024-01-26
psSAR1g [W/kg]	2.43	2.48
psSAR10g [W/kg]	1.13	1.15
Power Drift [dB]	0.01	0.03
M2/M1 [%]		81.4
Dist 3dB Peak [mm]		9.0



Plots of System Verification

Measurement Report

S02 System Check_H6500_240126

Device under Test Properties

Model, Manufacturer	Dimensions [mm]	IMEI	DUT Type
Dipole,	50.0 x 10.0 x 8.0		

Exposure Conditions

Phantom Section, TSL	Position, Test Distance [mm]	Band	Group, UID	Frequency [MHz], Channel Number	Conversion Factor	TSL Conductivity [S/m]	TSL Permittivity
Flat,				6500.0	5.35	6.12	32.7

Hardware Setup

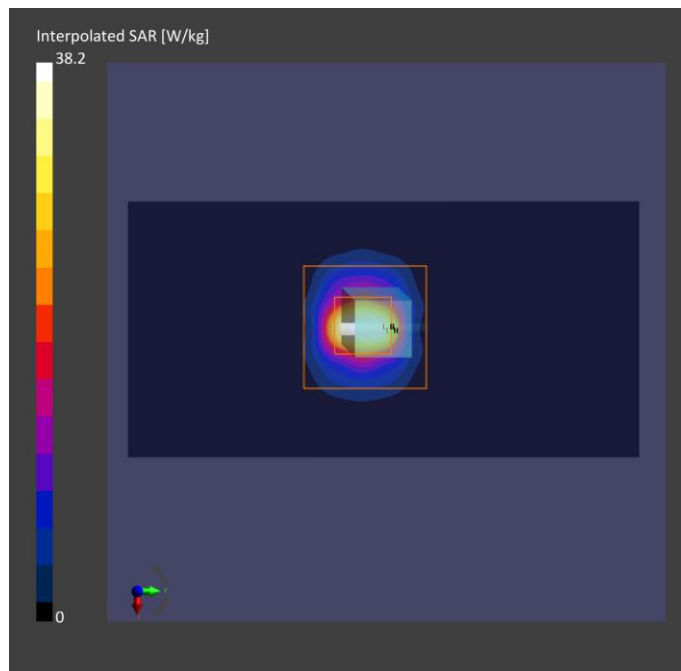
Phantom	TSL, Measured Date	Probe, Calibration Date	DAE, Calibration Date
ELI V8.0 (20deg probe tilt) - 2105	H51T72N6 , 2024-Jan-26	EX3DV4 - SN7554, 2023-09-19	DAE4 Sn1431, 2023-08-24

Scan Setup

	Area Scan	Zoom Scan
Grid Extents [mm]	45.0 x 90.0	22.0 x 22.0 x 22.0
Grid Steps [mm]	7.5 x 7.5	3.4 x 3.4 x 1.4
Sensor Surface [mm]	3.0	1.4

Measurement Results

	Area Scan	Zoom Scan
Date	2024-01-26	2024-01-26
psSAR1g [W/kg]	25.5	29.5
psSAR10g [W/kg]	5.05	5.39
psAPD (1.0cm2, sq) [W/m2]		295
psAPD (4.0cm2, sq) [W/m2]		133
Power Drift [dB]	-0.02	0.13
M2/M1 [%]		55.8
Dist 3dB Peak [mm]		7.6



Plots of System Verification

Measurement Report

S03 PD_System Check_10 GHz_2024.01.26

Device under Test Properties

Model, Manufacturer	Dimensions [mm]	IMEI	DUT Type
SPEAG, 5G Verification Source 10 GHz	100.0 x 100.0 x 170.0	SN: 1016	Phone

Exposure Conditions

Phantom Section	Position, Test Distance [mm]	Band	Group, UID	Frequency [MHz], Channel Number	Conversion Factor
5G Air	FRONT, 5.55	Validation band	CW, 0--	10000.0, 10000	1.0

Hardware Setup

Phantom	Medium	Probe, Calibration Date	DAE, Calibration Date
mmWave- 1029	--Air--	EUmmWV4 - SN9615_F1-55GHz, 2023-07-10	DAE4 Sn1431, 2023-08-24

Scan Setup

	5G Scan
Grid Extents [mm]	60.0 x 60.0
Grid Steps [lambda]	0.125 x 0.125
Sensor Surface [mm]	5.55

Measurement Results

	5G Scan
Date	2024-01-26
Avg. Area [cm ²]	4.00
psPDn+ [W/m ²]	50.0
psPDtot+ [W/m ²]	50.8
psPDmod+ [W/m ²]	51.1
E _{max} [V/m]	144
Power Drift [dB]	0.01

