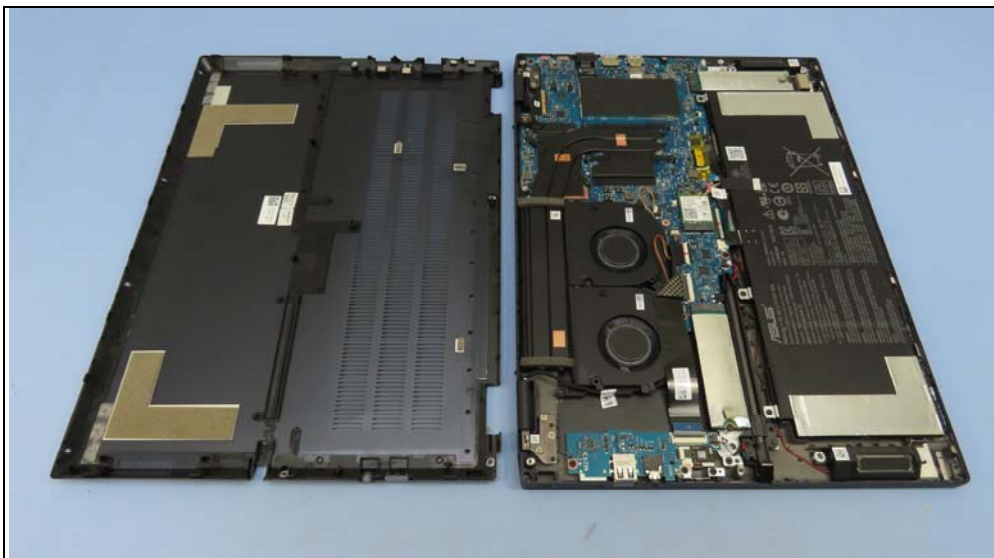
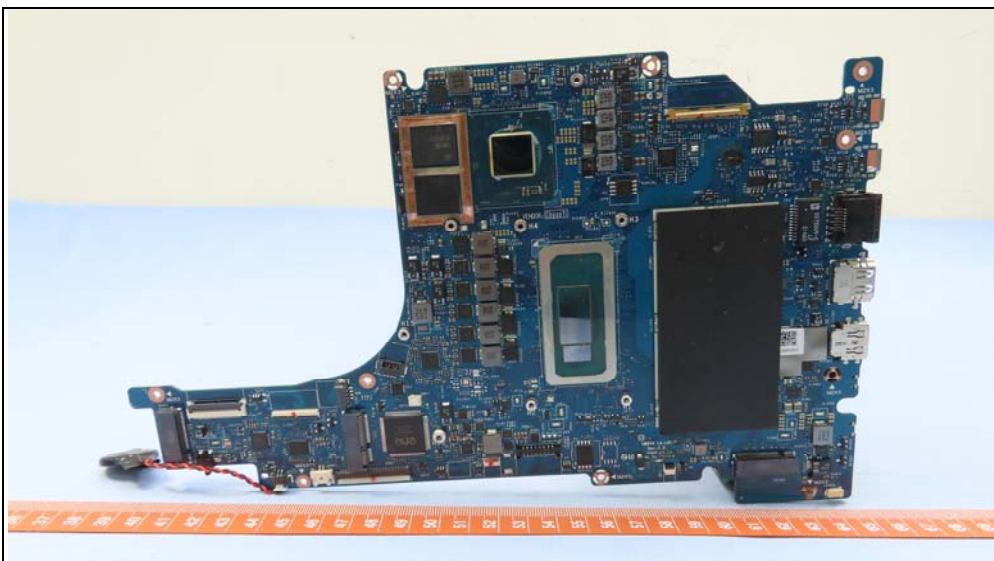
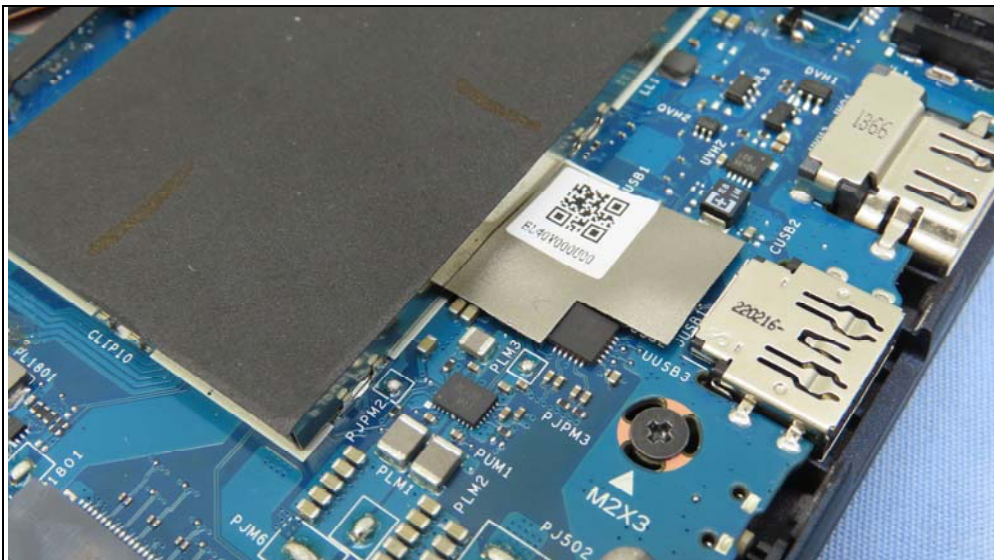


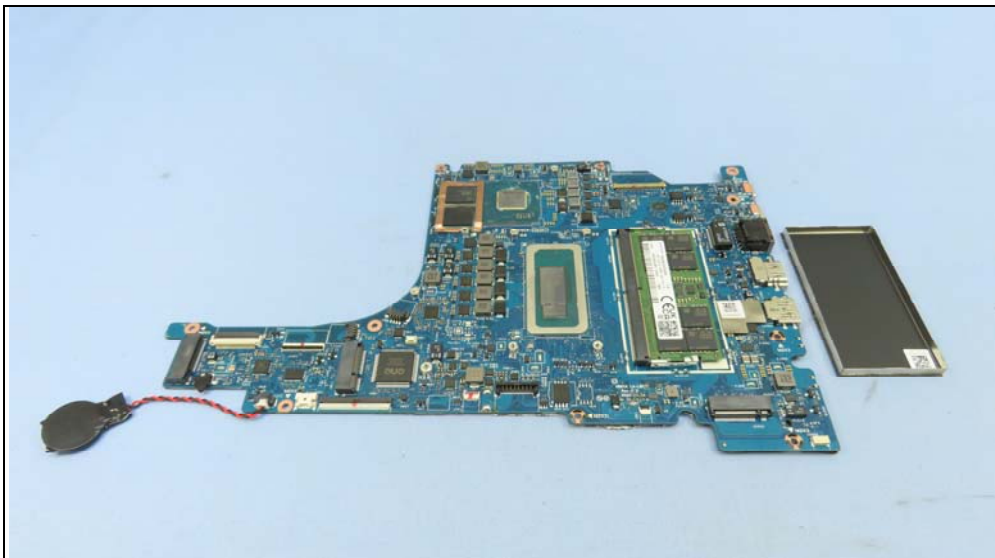
## CONSTRUCTION PHOTOS OF EUT

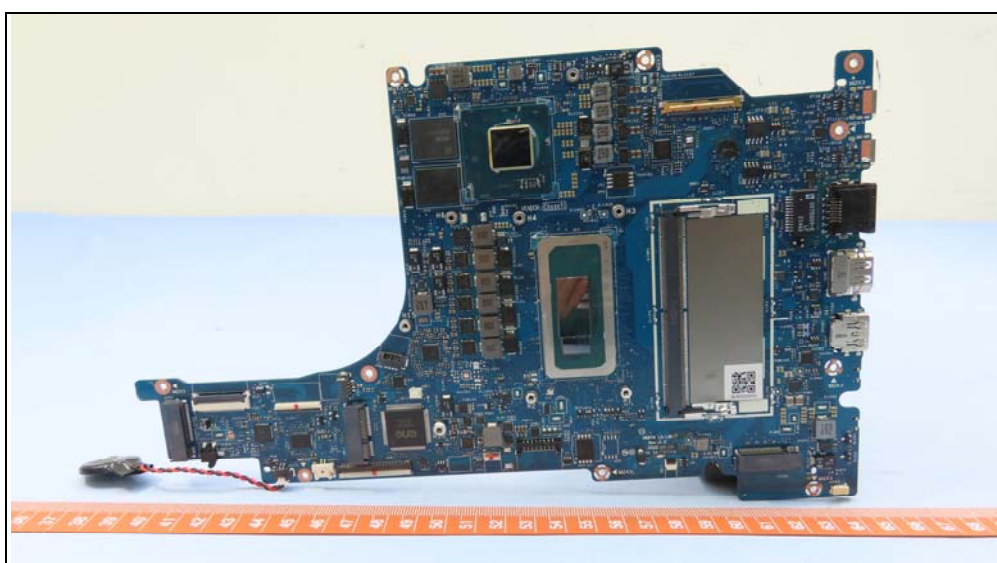
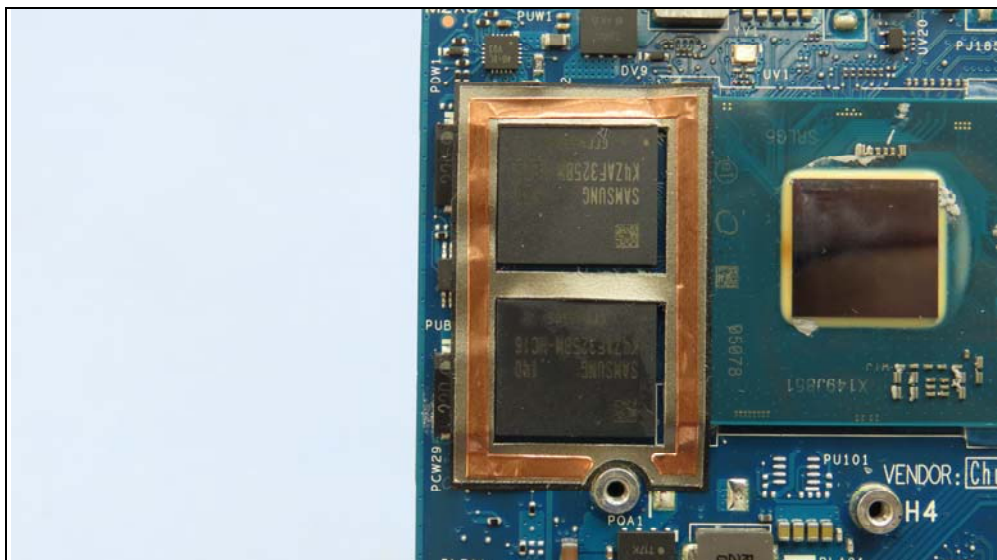








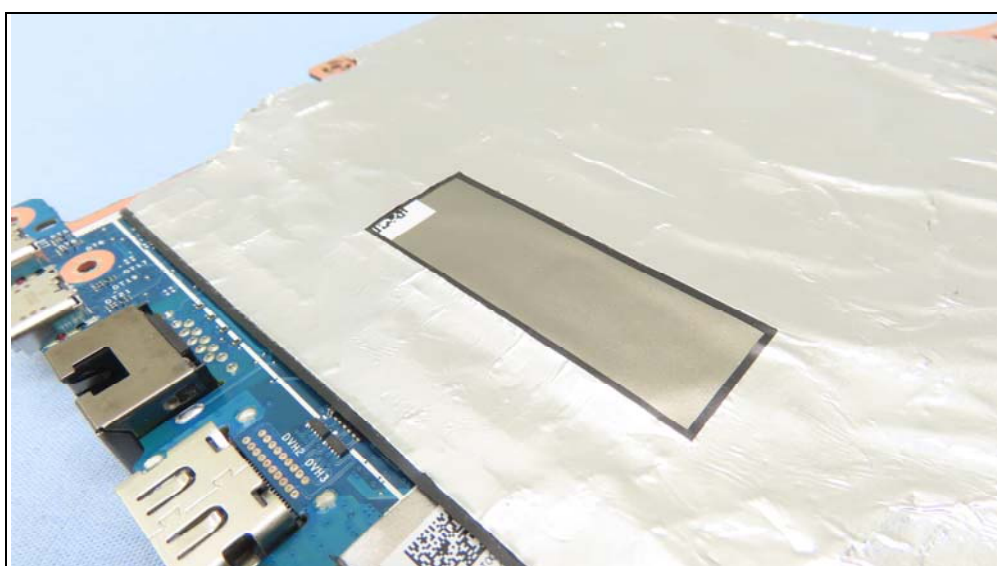
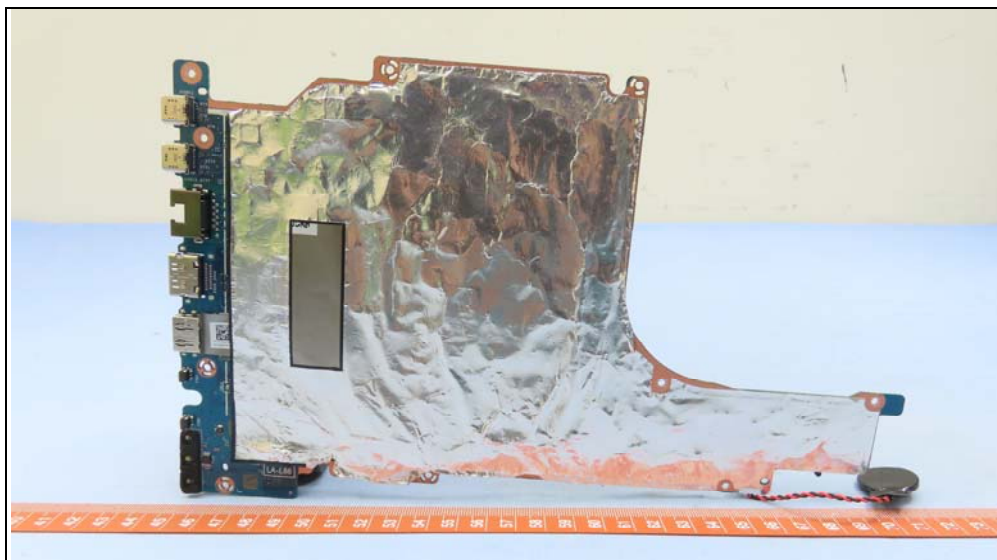


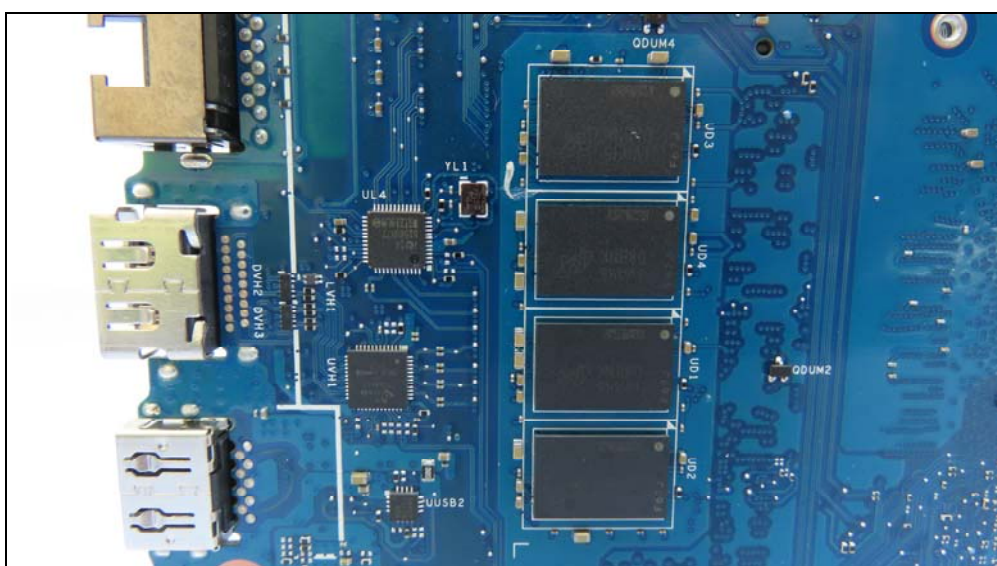
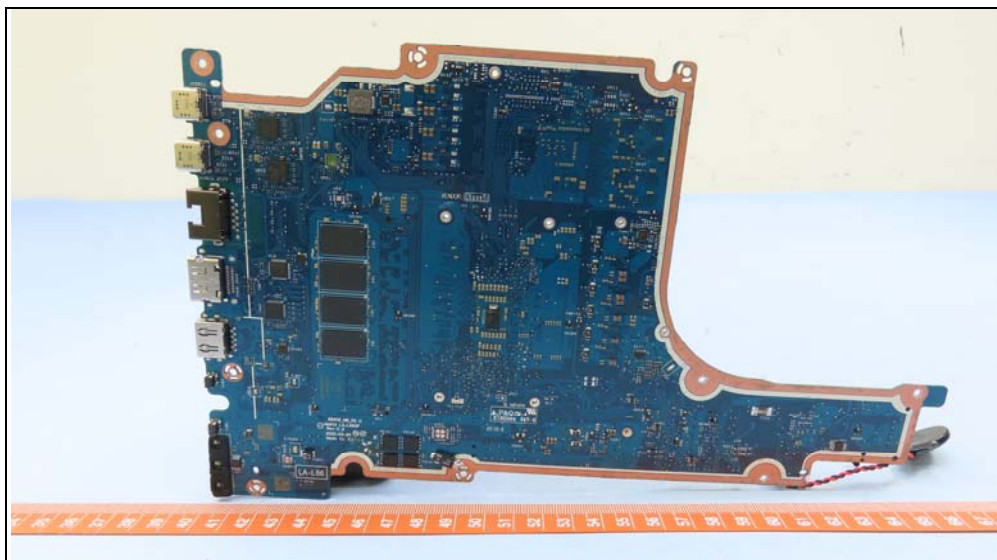


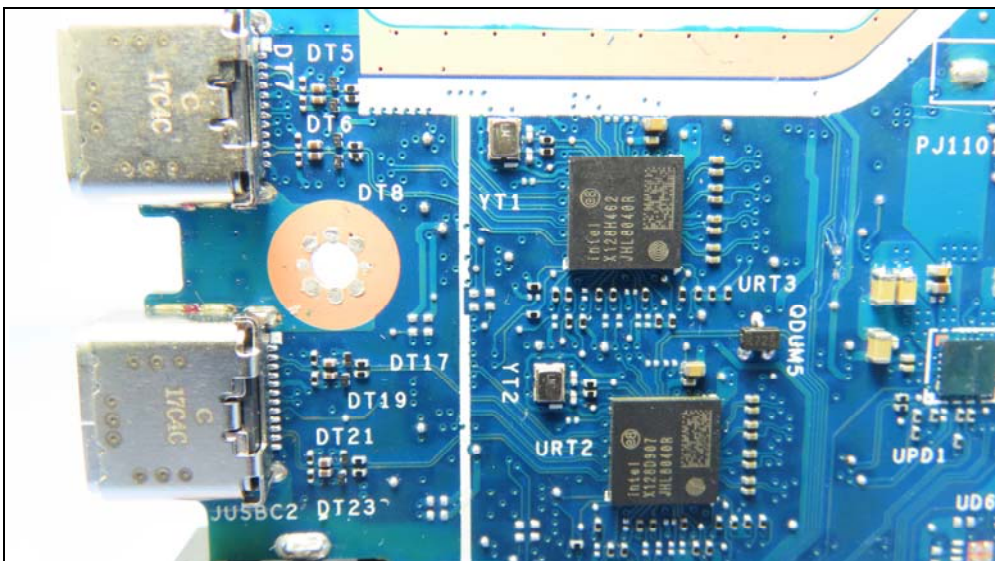
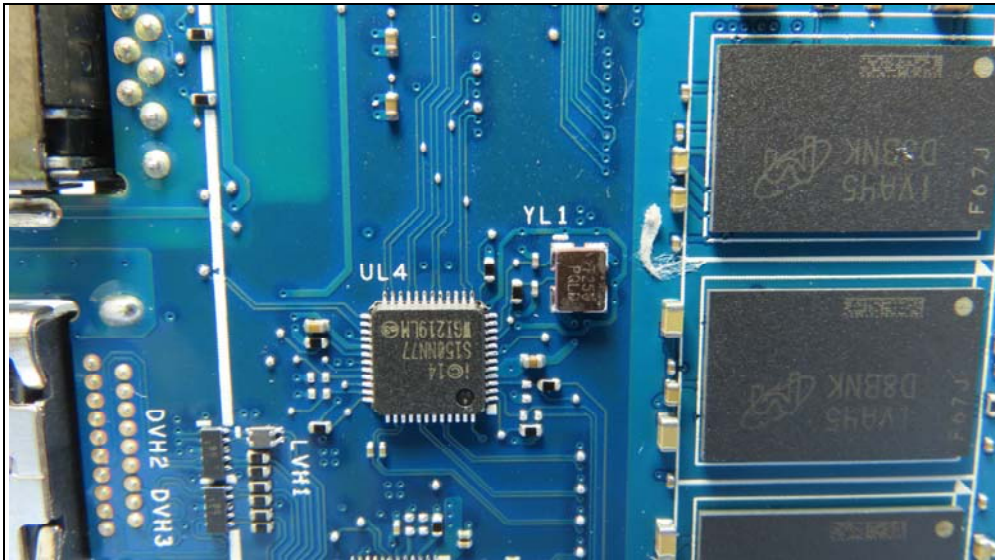


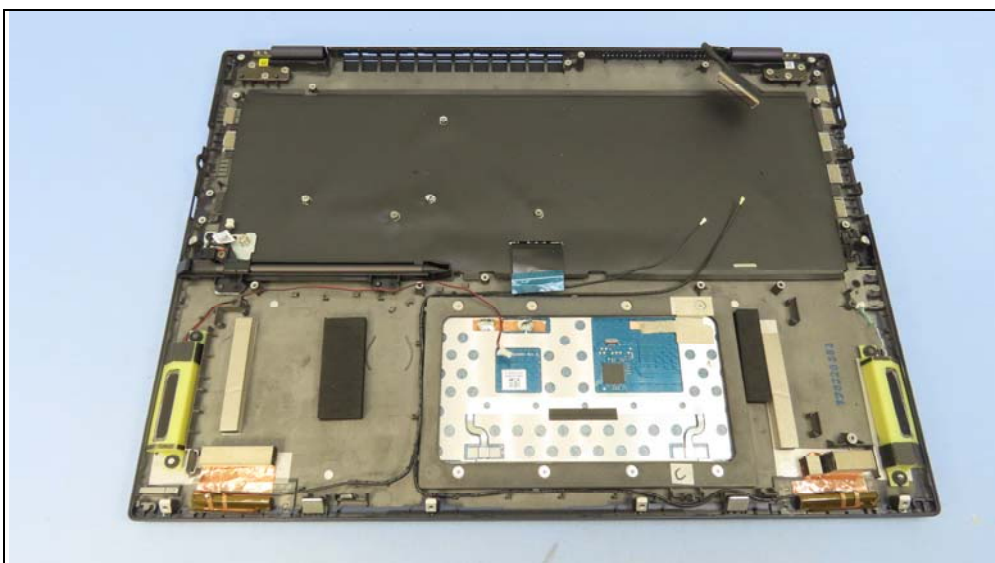
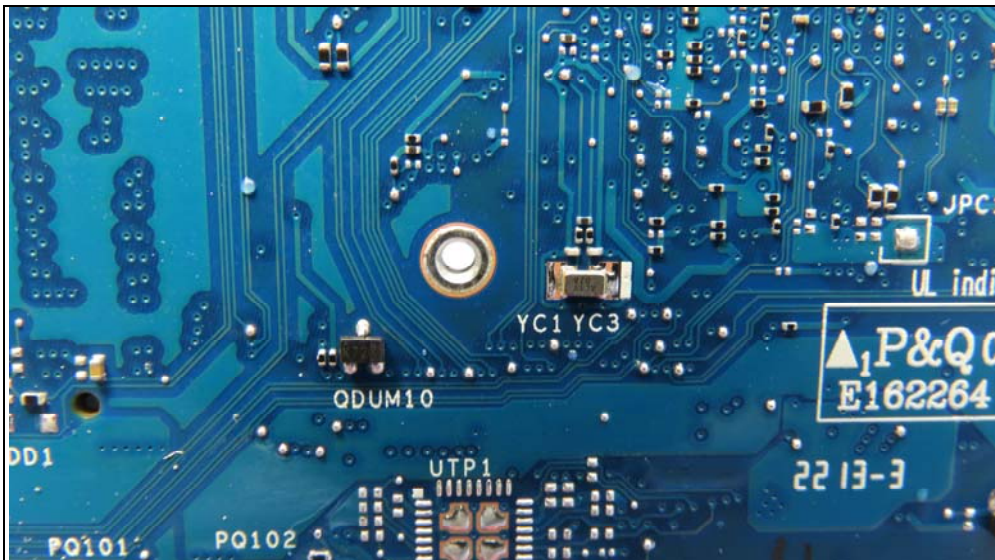


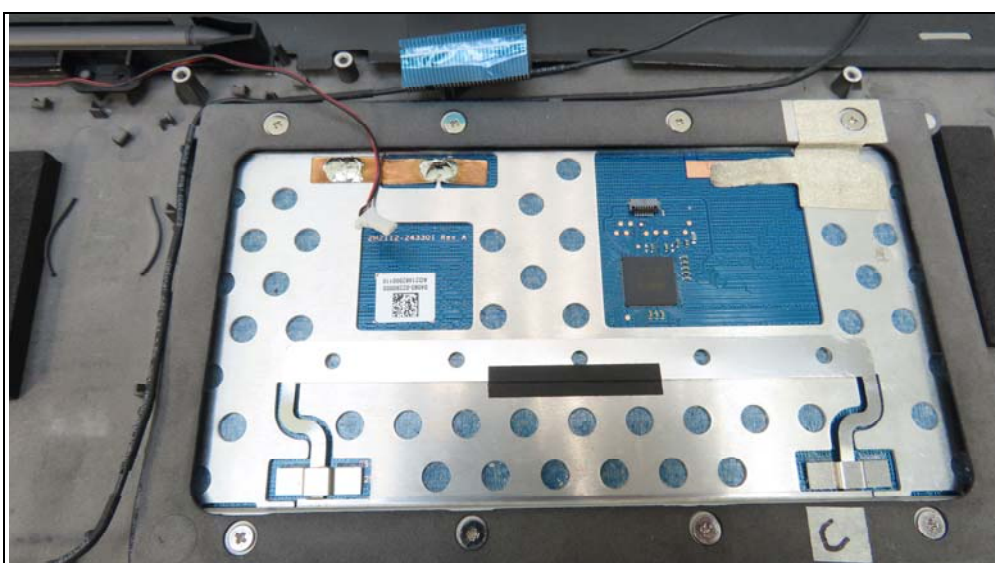
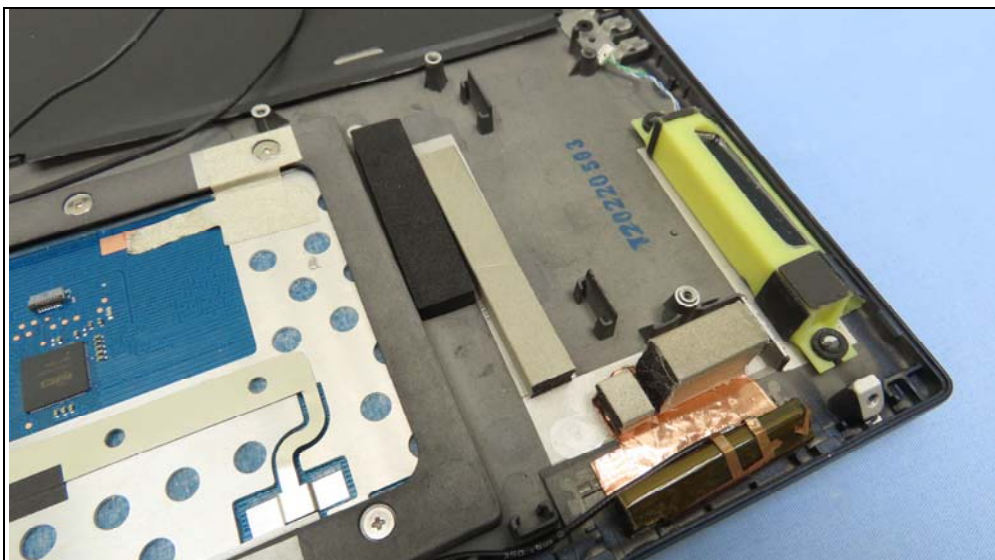


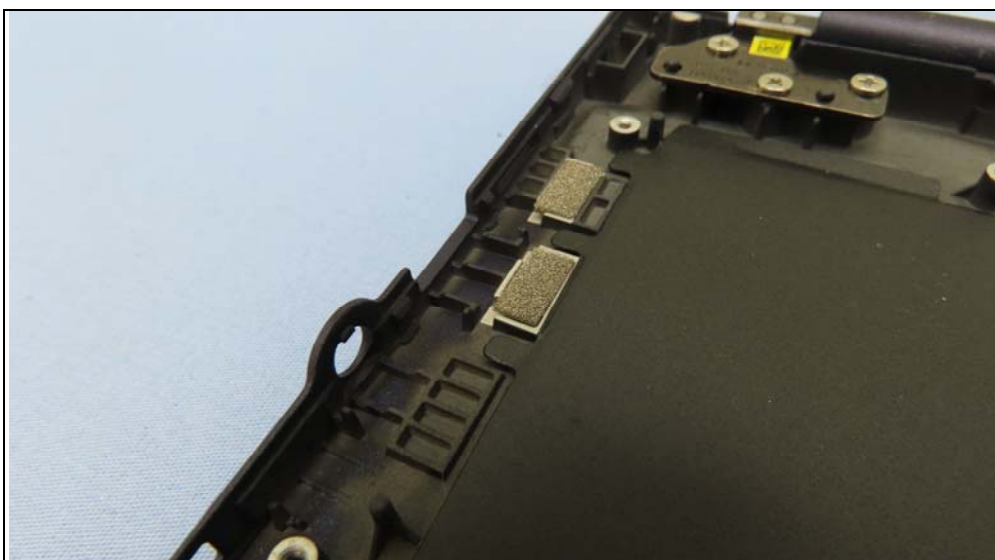
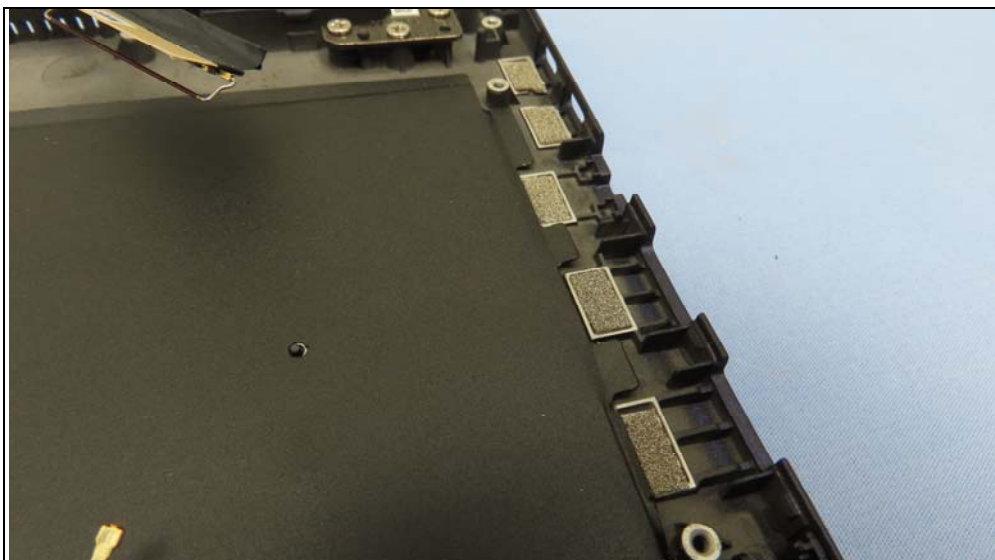


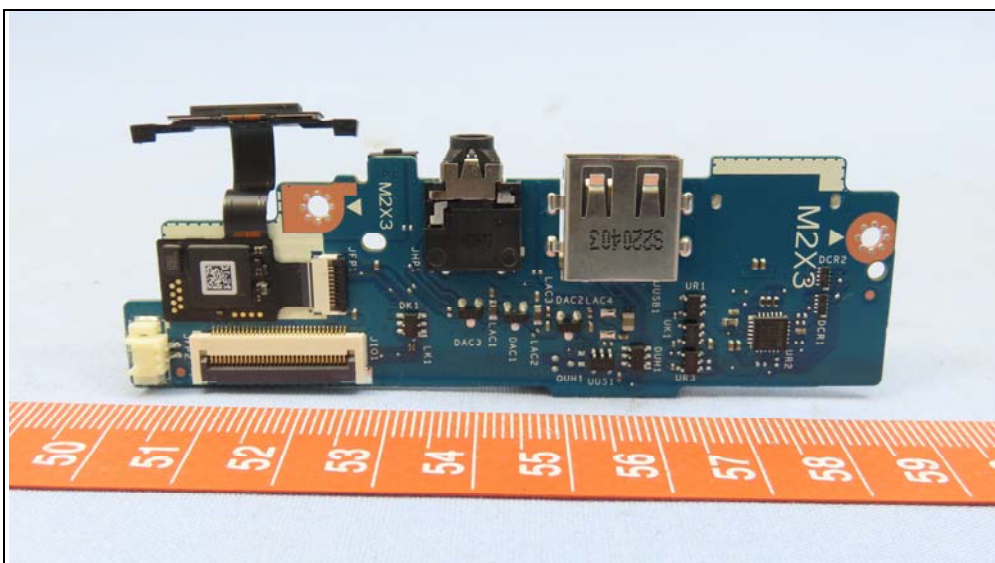
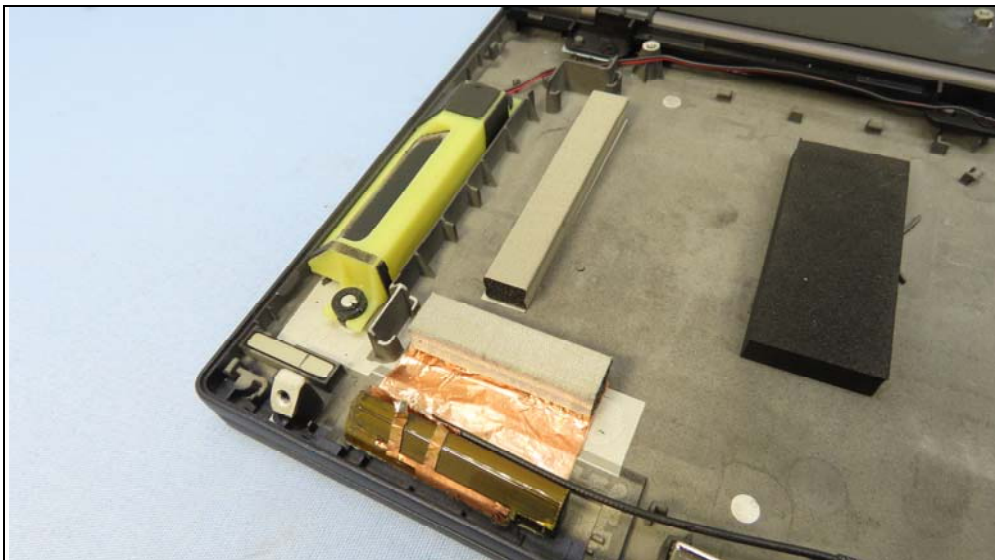


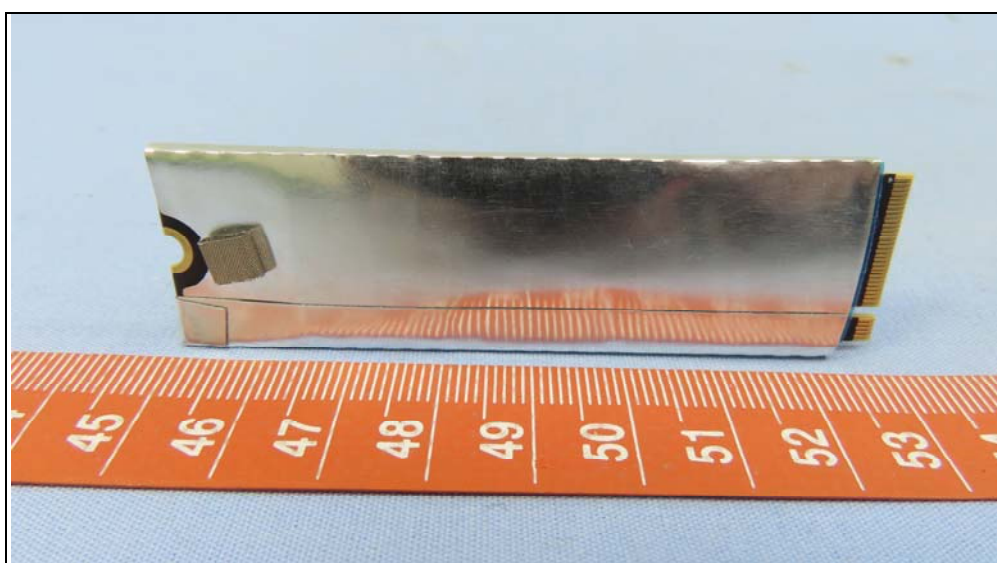
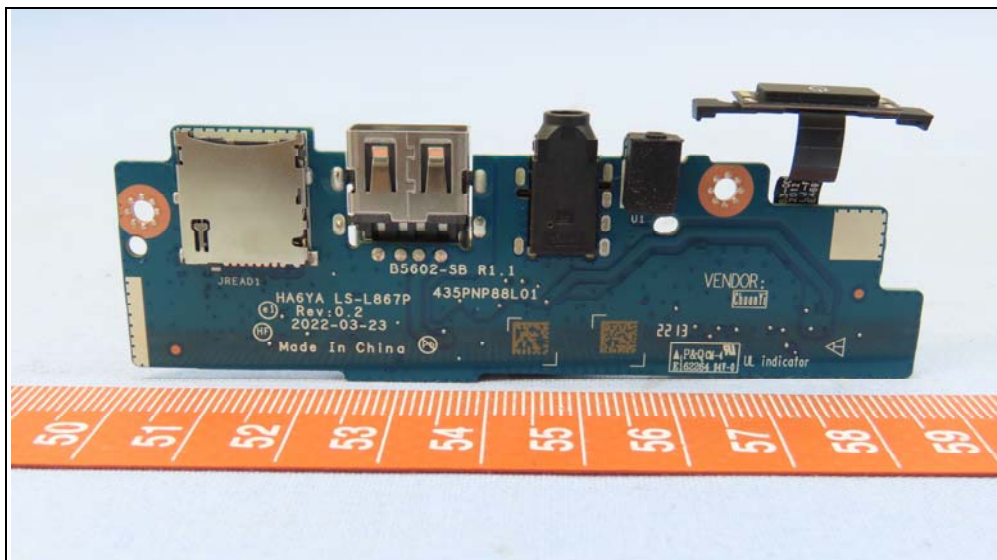




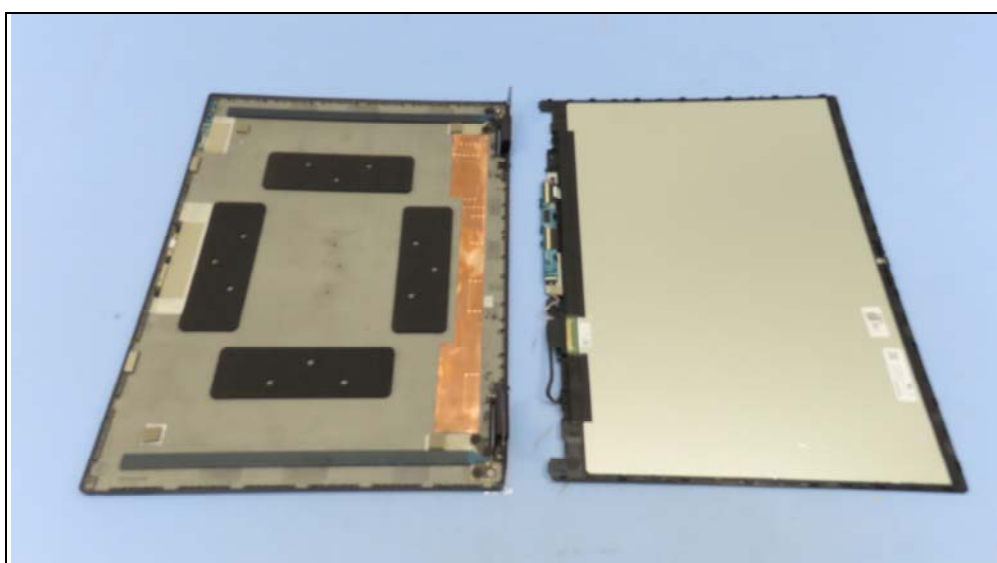
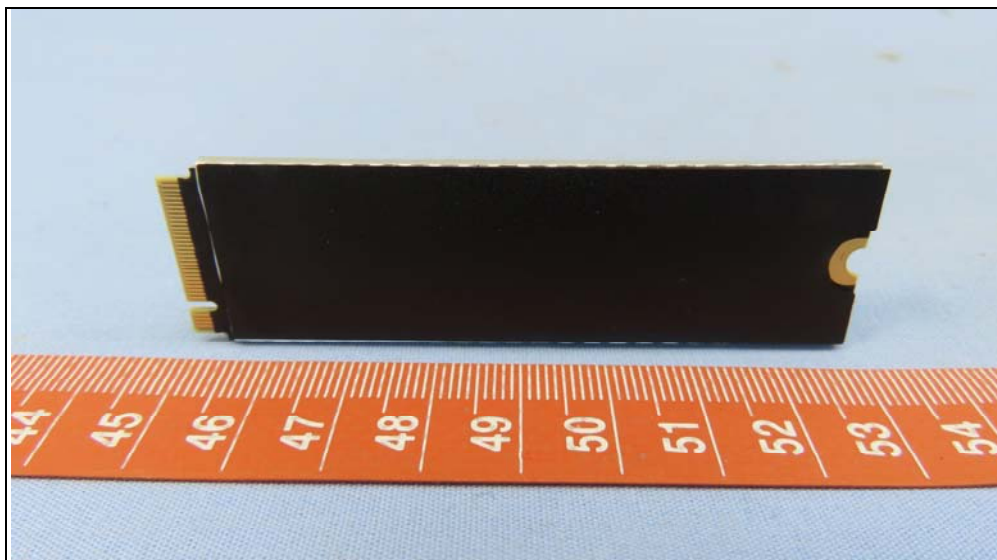


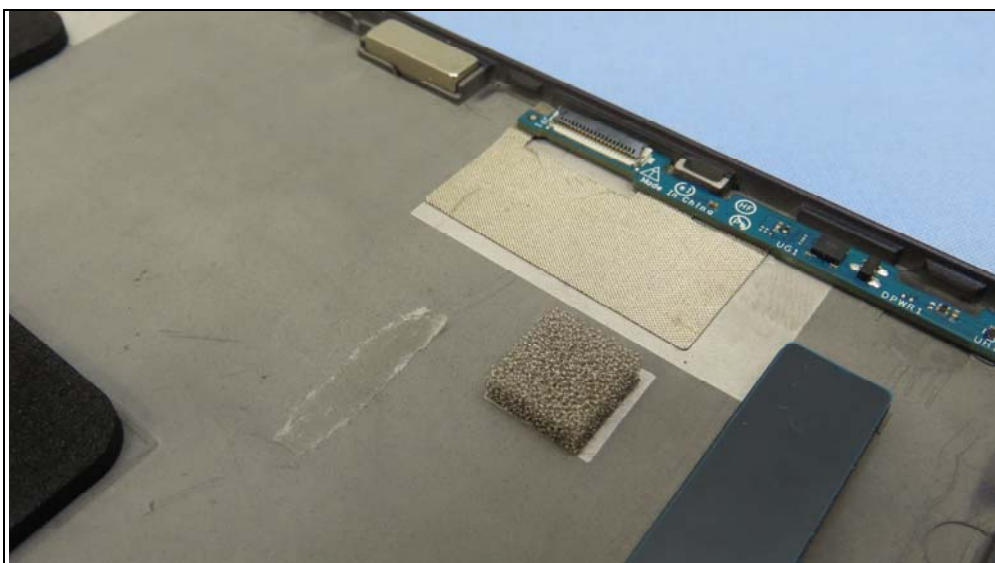
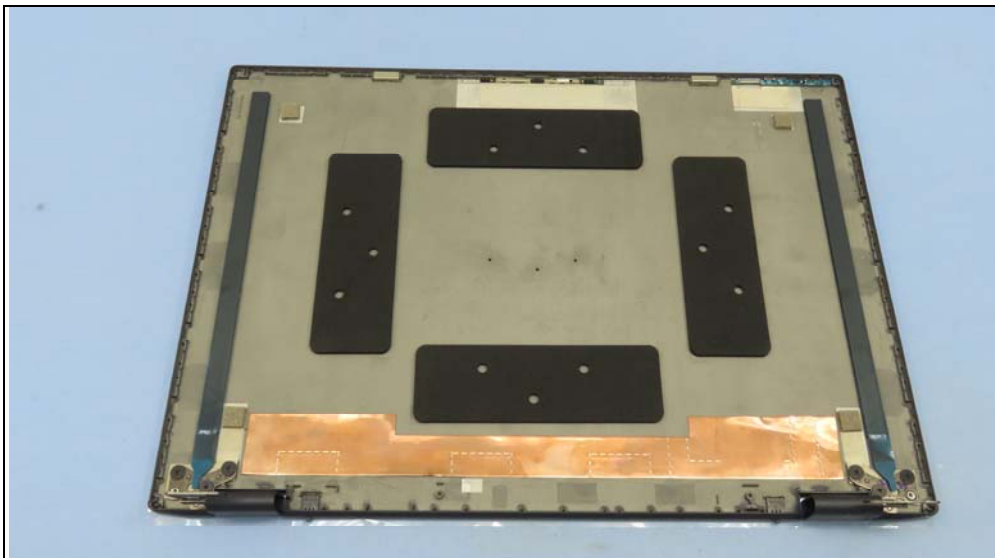


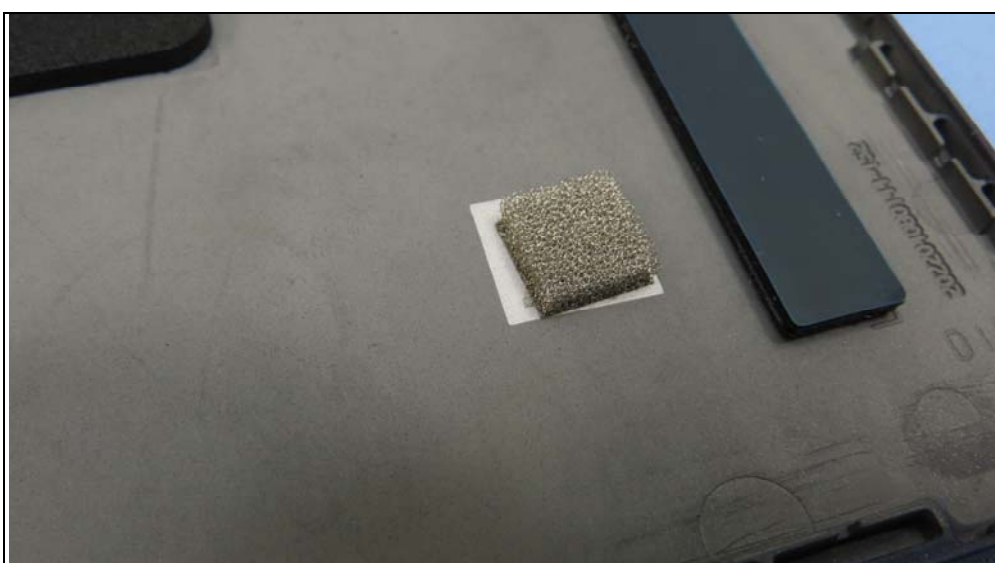


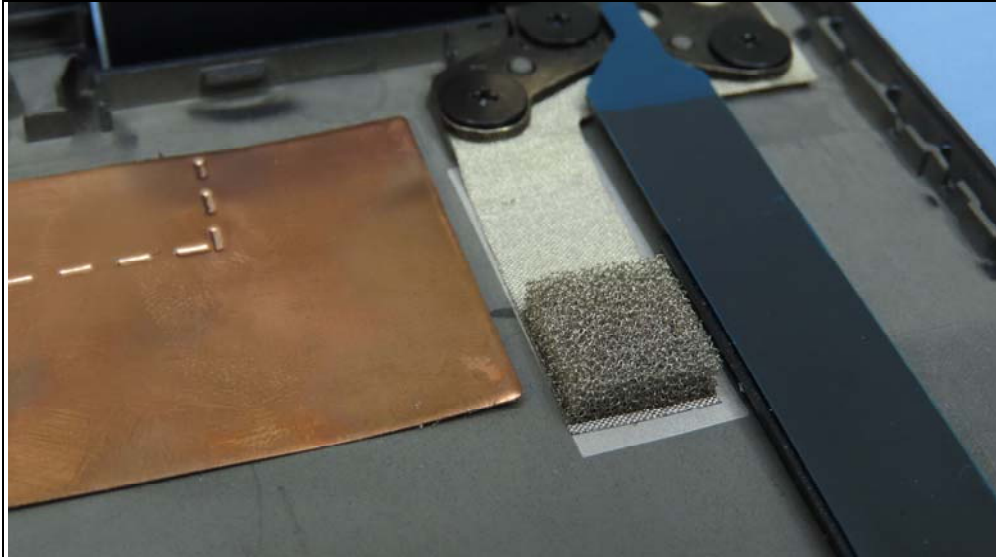


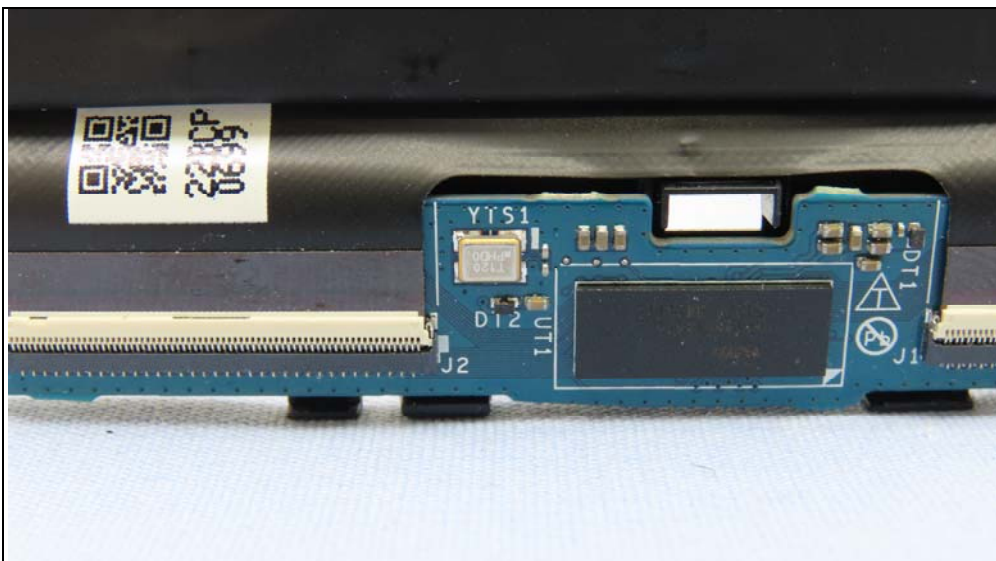


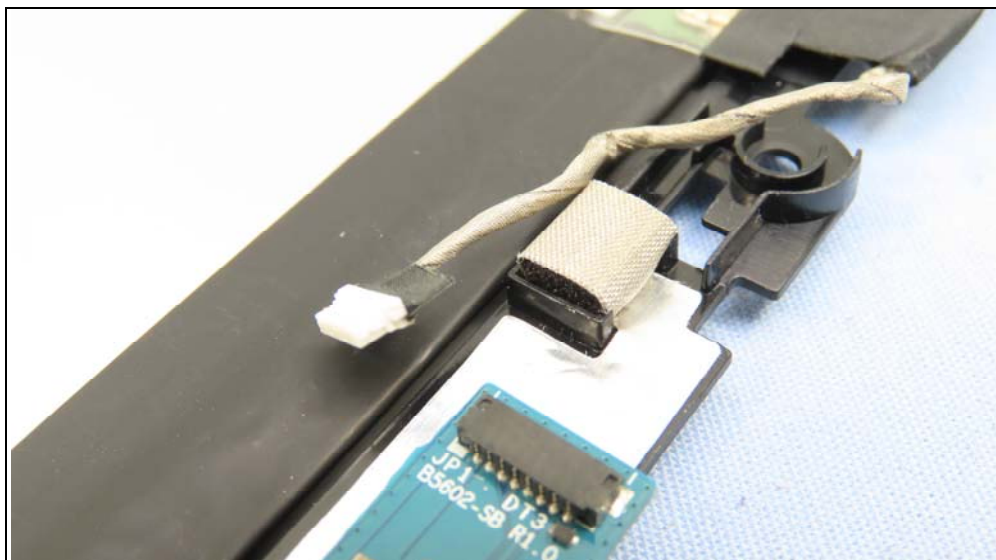


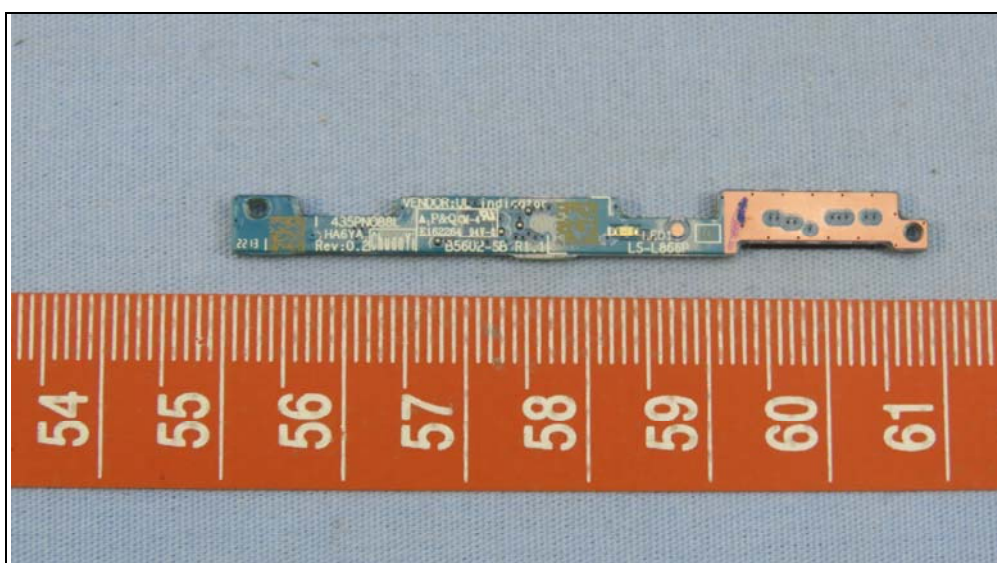
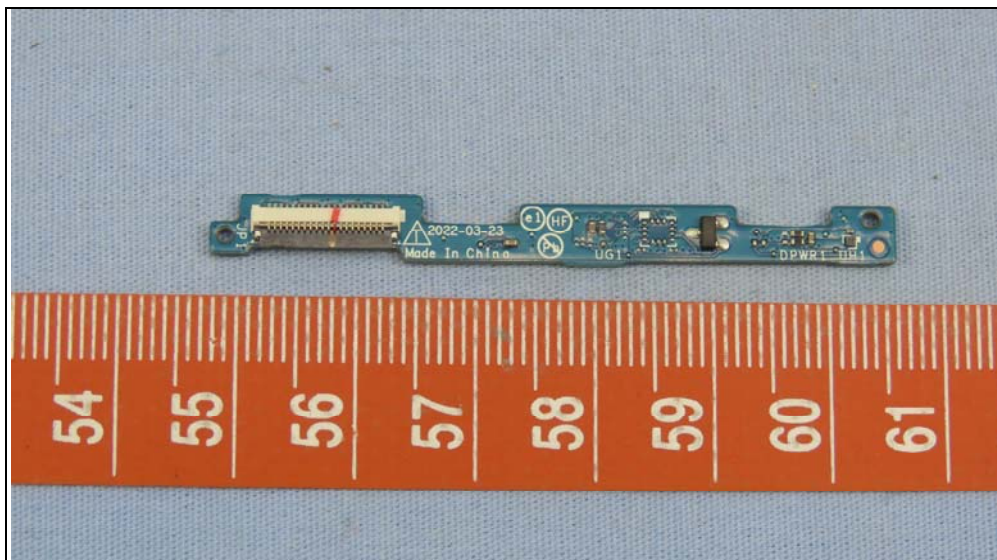




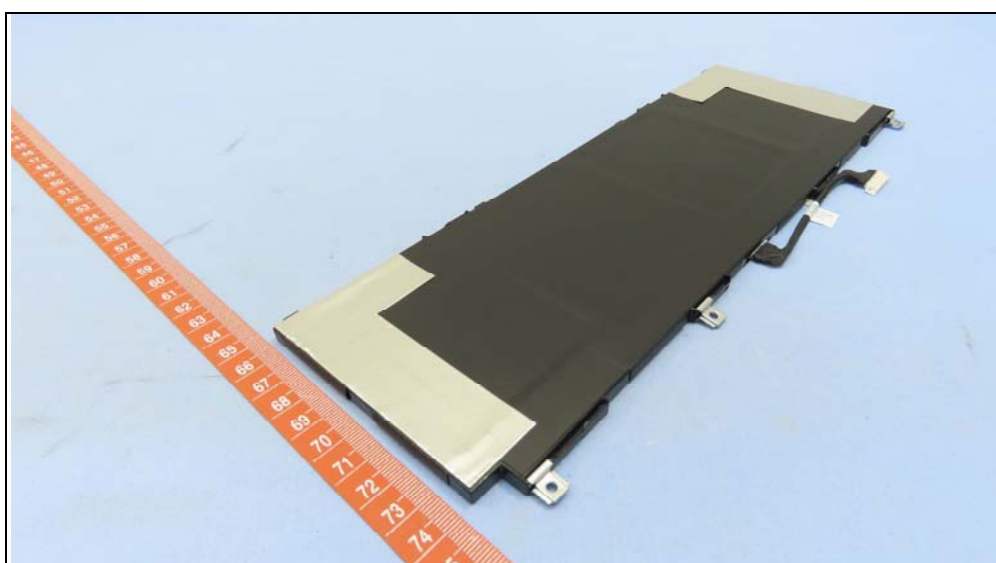
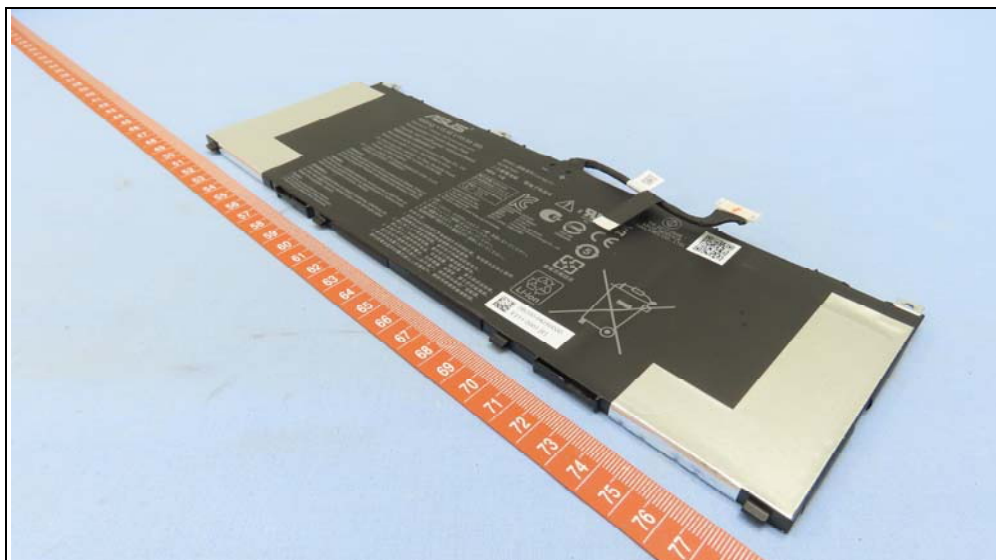




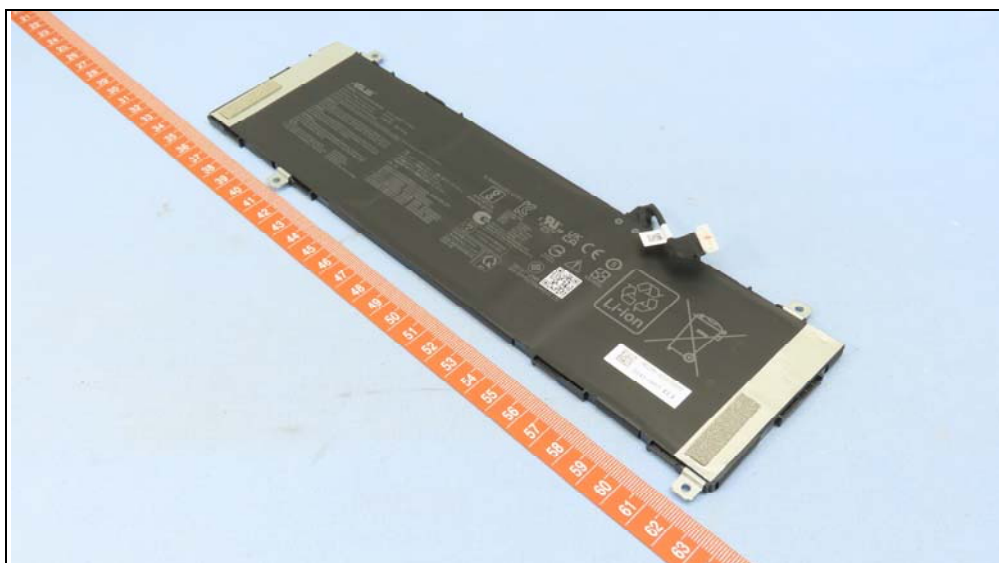


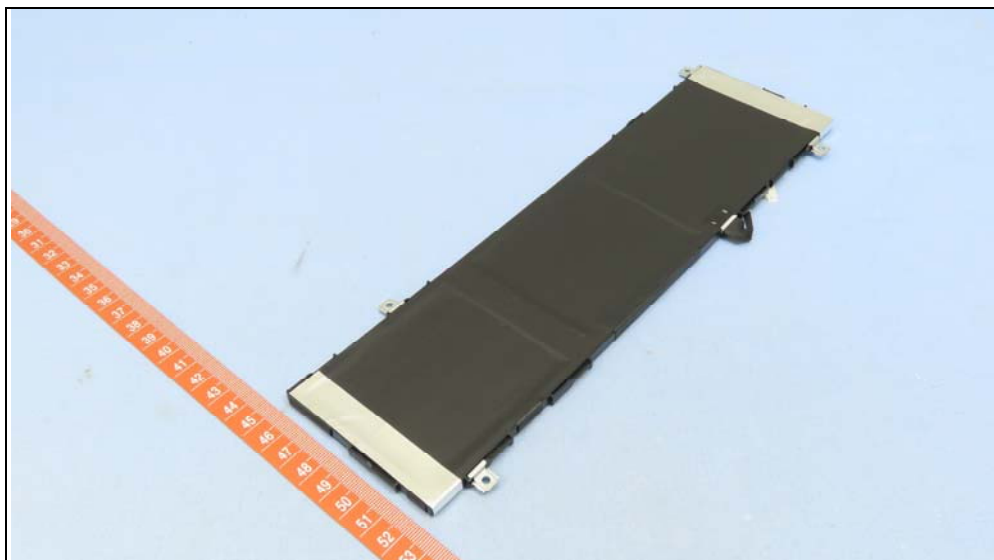


### Battery









**ASUS**  
 Rating: +11.55V  $\equiv$  50Wh    MODEL (型號/型号) C31N2005  
 Questions ? Please visit [www.asus.com](http://www.asus.com)    3ICPS7082  
 Rechargeable Li-Polymer Battery Pack    二次鋰電池組    鋰離子電池組  
 Capacity: 4335mAh(Typical) / 4210mAh(Rated)  
 UK: ASUSTEK (UK) LIMITED, 1st Floor, Sackville House, 143-149 Fenchurch Street, London, EC3M 6BL, England, United Kingdom  
 EU: ASUS COMPUTER GmbH HARKORT STR. 21-23, 40880 RATINGEN, GERMANY

**VORSICHT!**  
 Explosionsgefahr bei unsachgemäÙen Austausch der Batterie. Ersatz nur durch denselben oder einen vom Hersteller empfohlenen ähnelichen Typ.  
 Entsorgung gebrauchter Batterien nach Angaben des Herstellers. (German)

**VARNING!**  
 Explosionsfare vid felaktigt batteri/ys. Anvnd samma batterityp eller en ekvivalent typ som rekommenderas av apparitilverkaren. Kassera anvnt-  
 batteri enligt fabrikanterns instruktion. (Swedish)

**ADVARSEL!**  
 Lithiumbatteri-Explosionsfare ved fejlagtig hndtering. Udsiktning m  
 kun ske med batteri af samme fabrikat og type. Levvr det brugte batteri  
 tilgde til leverandoren. (Danish)

**Caution:**  
 1. Must be recycled or disposed of properly.  
 2. Do not dispose of in fire or directly short circuit.  
 3. Never attempt to disassemble or reassemble.

**AVERTISSEMENT:**  
 1. Ne pas jeter au feu.  
 2. Ne pas court-circuiter.  
 3. Ne pas dmonter.  
 4. Ne pas raser si une fuite est constatée.

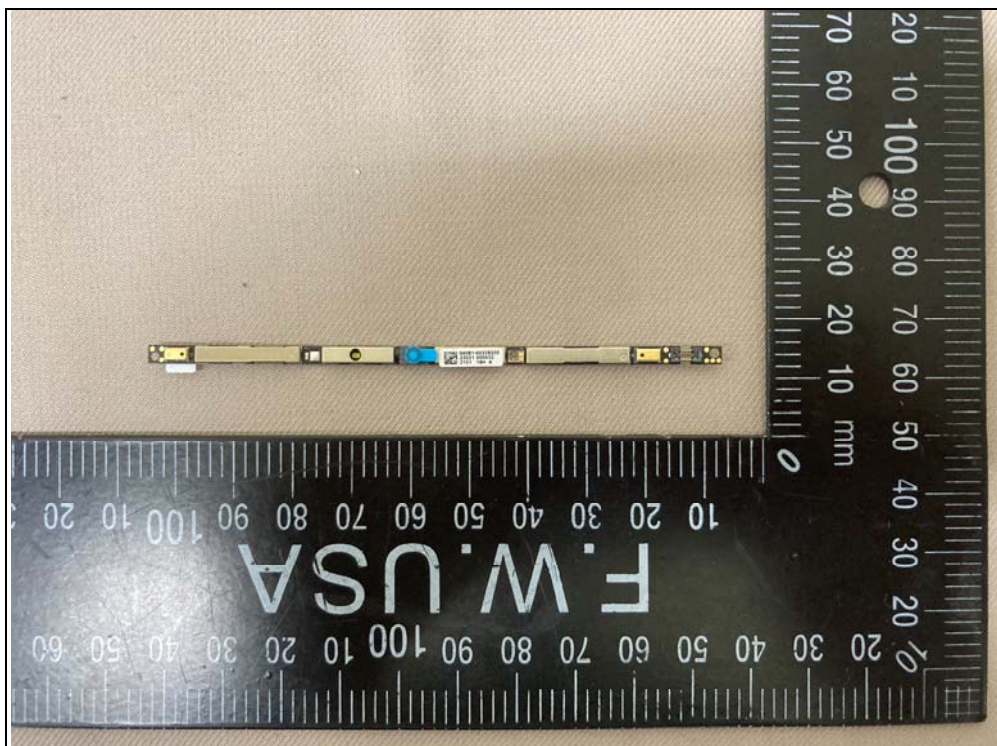
**注意:**  
 1. 水につけたり、火の中に入れたり、分解・改造しないでください。  
 2. 端子ショート（短絡）させないでください。  
 3. 強い衝撃を与えたり、落下させないでください。  
 4. 取扱説明書で指定された種類以外に使用しないでください。

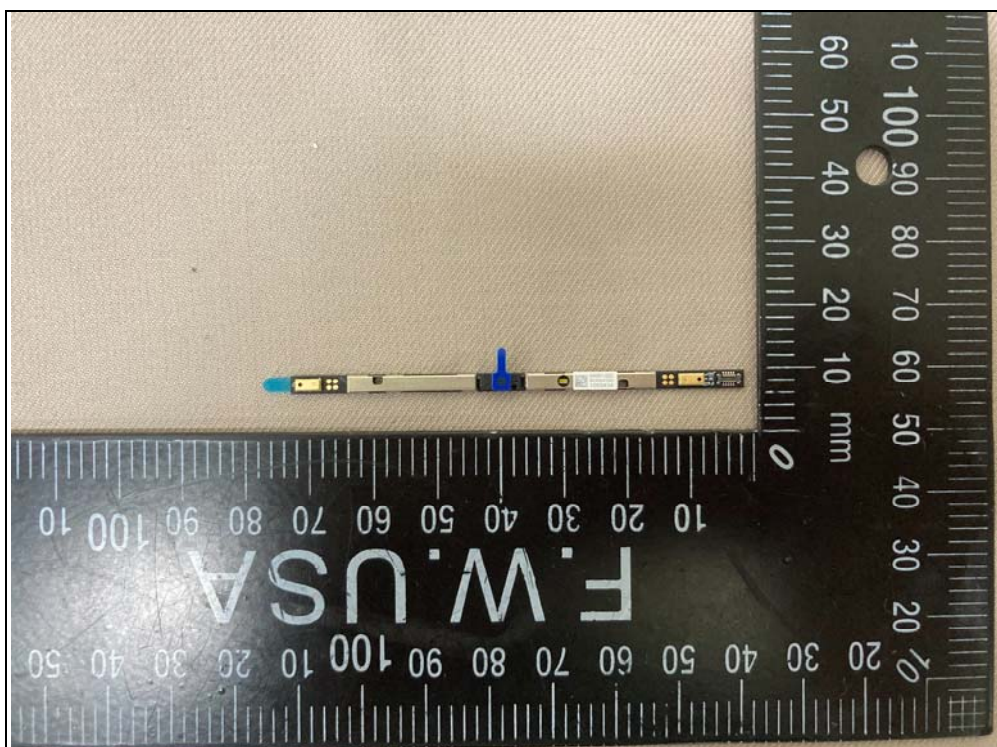
**注意/注意:**  
 1. 鋰離子電池必須按照國家廢物管理辦法回收處理。電池浸水將禁止使用！  
 廢電池必須按照國家廢物管理辦法回收處理。  
 2. 禁止投入火中或直接短絡。請勿自行拆解或短絡電池。  
 禁止投入火中或直接短絡。請勿自行拆解或短絡電池。  
 3. 若有任何不當操作使用電池，包括碰撞、摔落等，請立即送還維修。  
 請勿將電池置於60攝氏度以上的環境中。請使用原廠專用充電器。  
 請勿將電池置於60攝氏度以上的環境中。請使用原廠專用充電器。

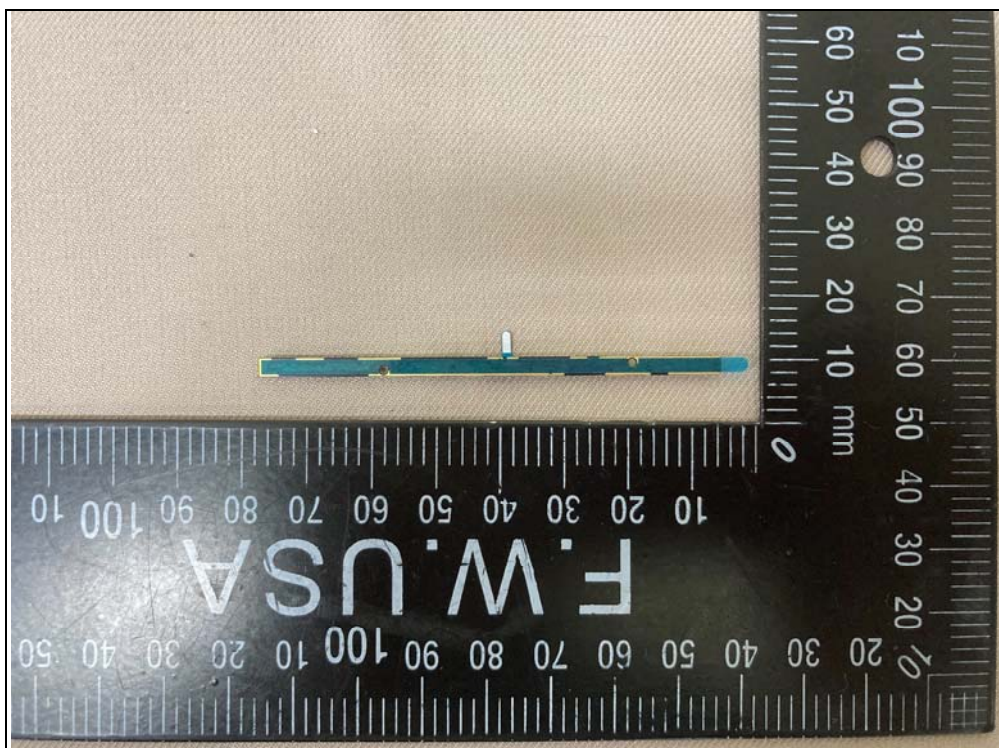
IS 16046/P  
 R-41  
 www.D



Camera



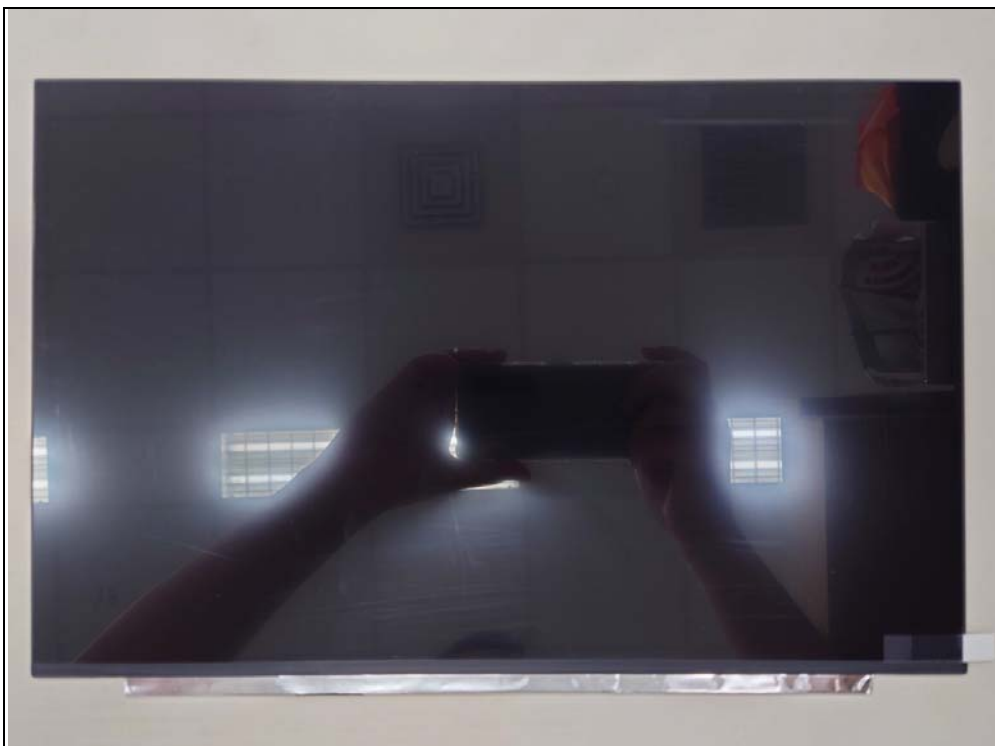


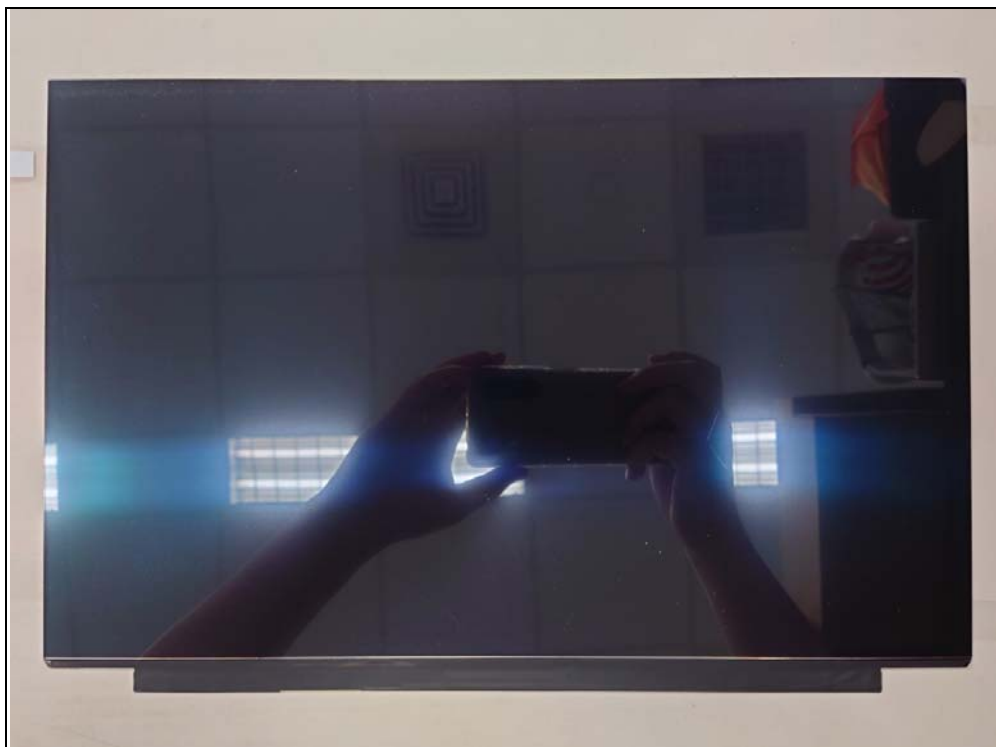
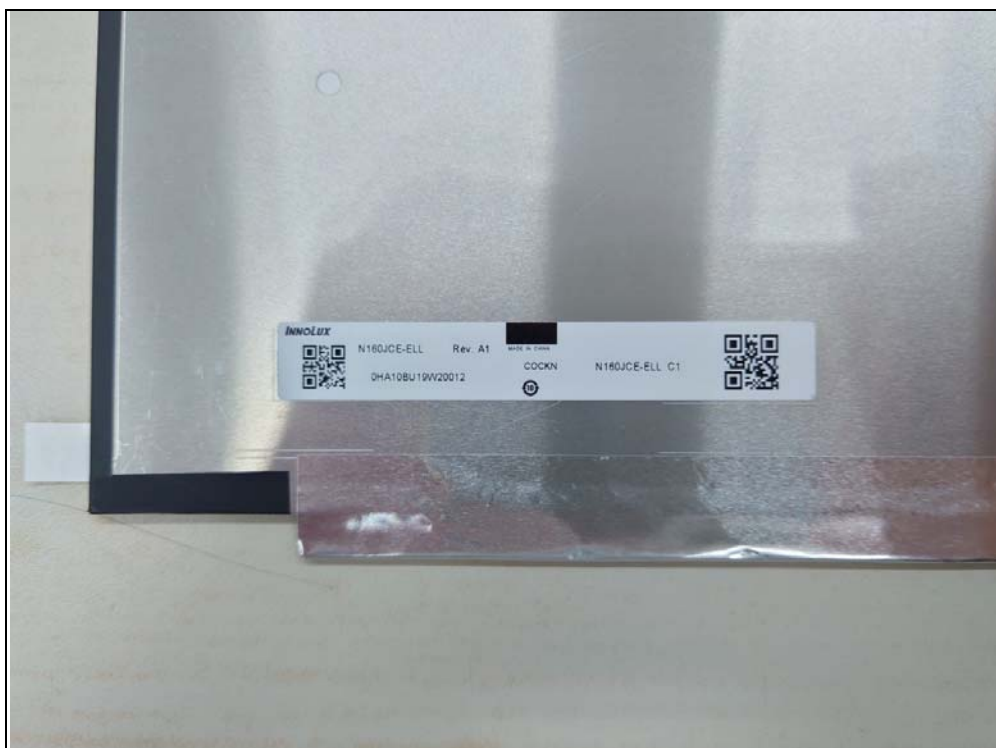


LCD





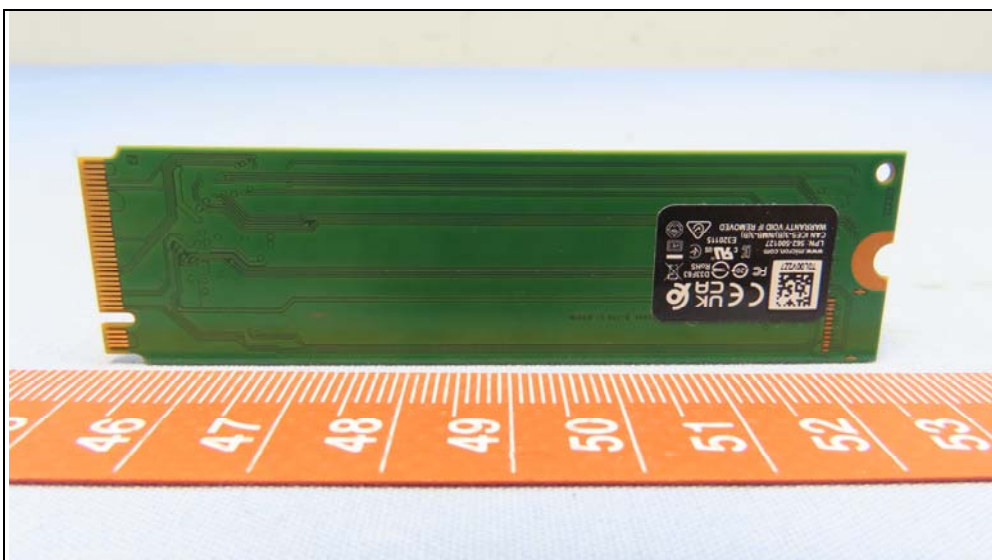
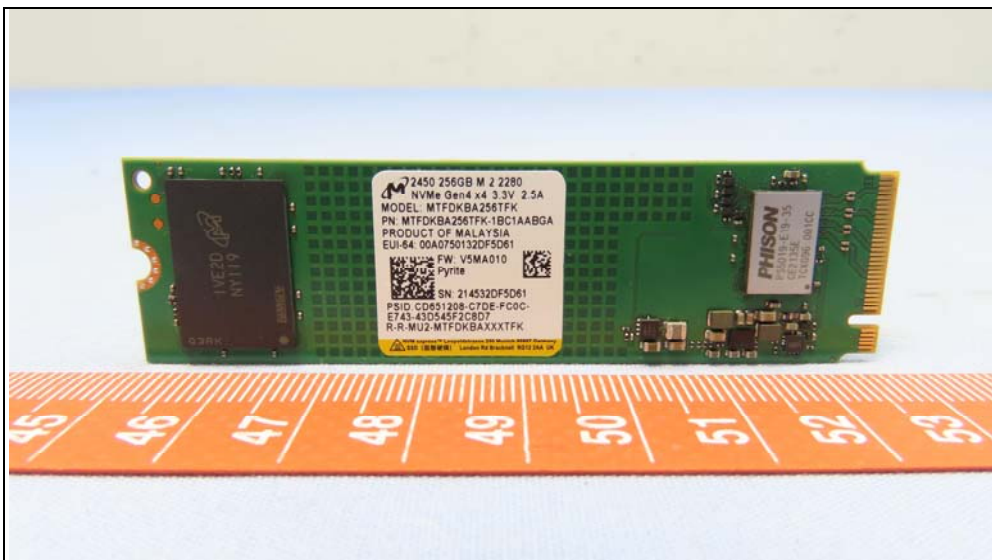








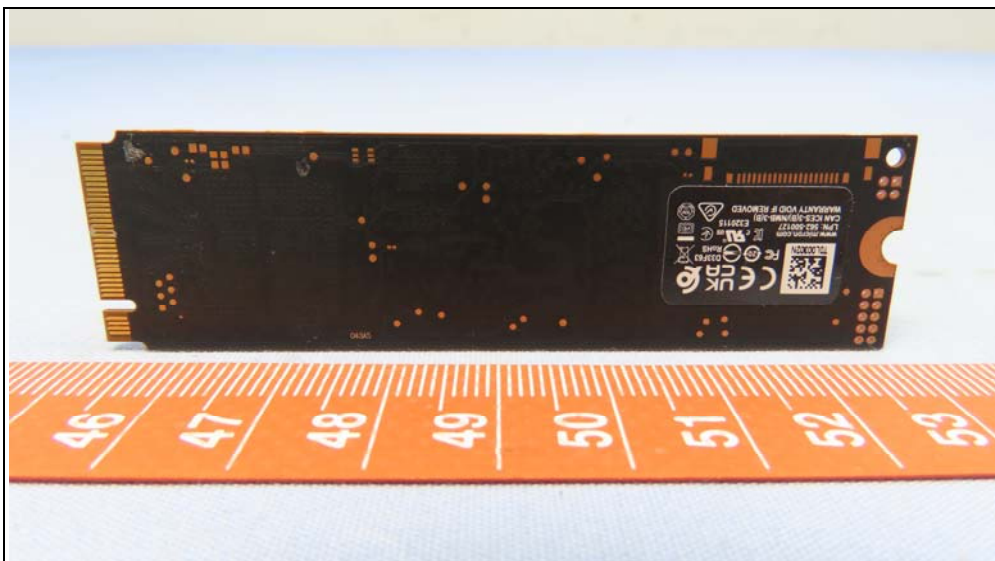
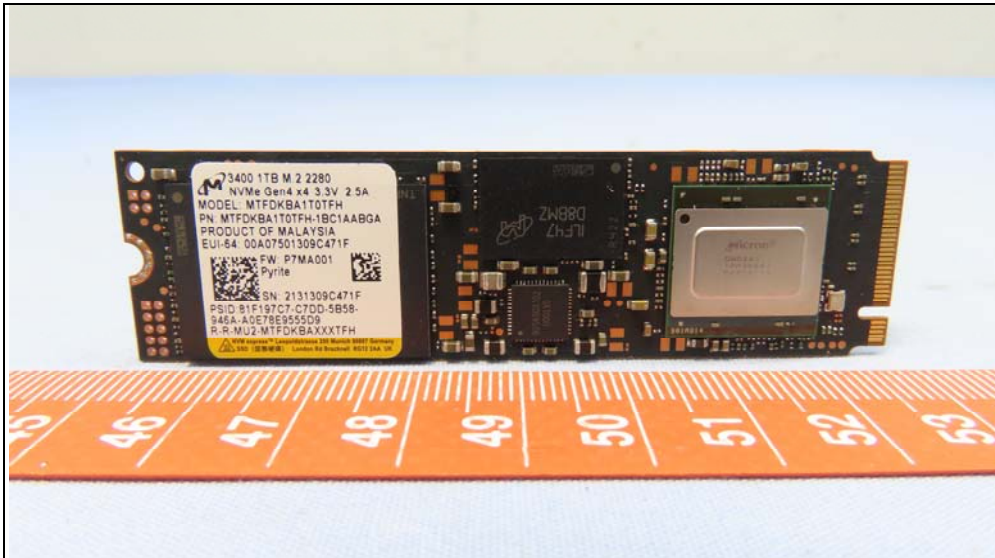
SSD



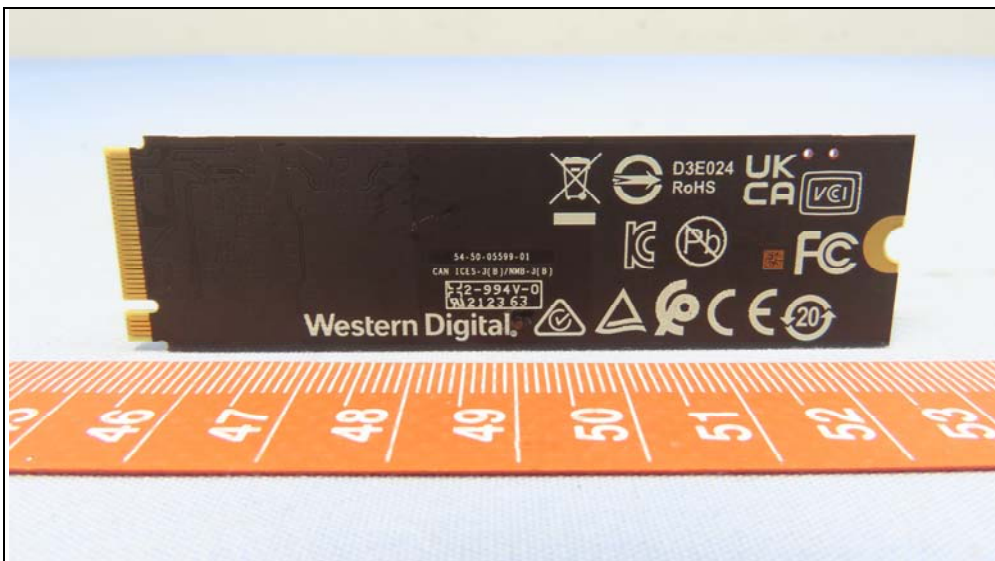
















### WLAN

