



ISSUED BY
Shenzhen BALUN Technology Co., Ltd.

FOR

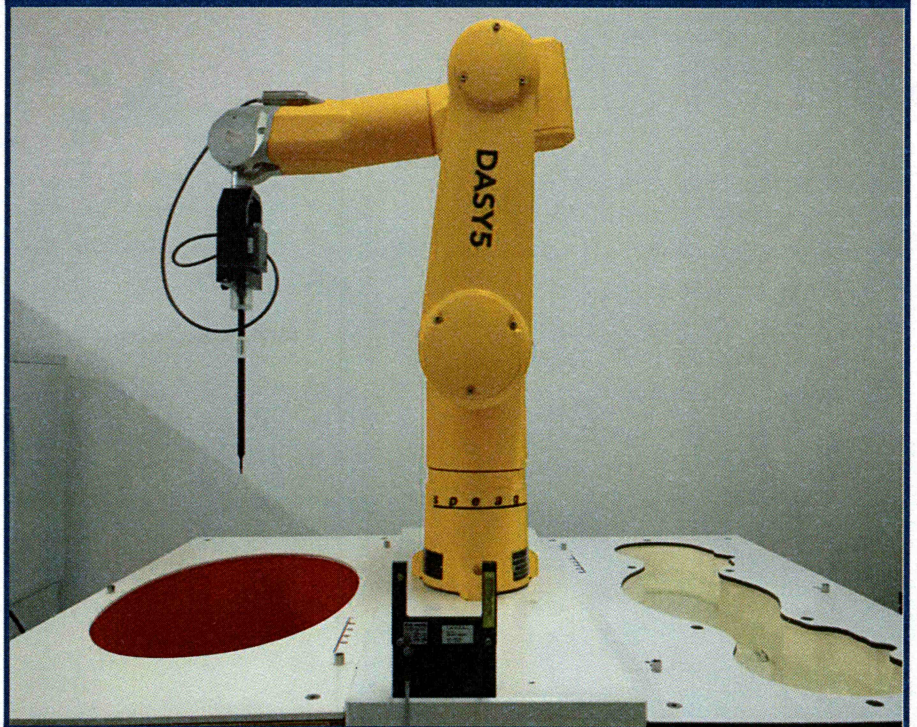
2TX 11ax (WiFi6) + BLE Combo Card

ISSUED TO
MediaTek Inc.

No. 1, Dusing 1st Rd. Hsinchu Science Park Hsinchu City 30078
Taiwan

SAR

TEST REPORT



Tested by: Xu Rui

Xu Rui

Date: Jul. 07, 2021

Approved by:

Wei Yanquan
(Chief Engineer)

Date: Jul. 07, 2021

Report No.: BL-SZ2150462-701

EUT Name: 2TX 11ax (WiFi6) + BLE Combo Card

Model Name: MT7921

Brand Name: N/A

FCC ID: RAS-MT7921

Test Standard: FCC 47 CFR Part 2.1093

ANSI C95.1-1992, IEEE Std. 1528-2013

Maximum SAR: Body 2.4GHz(1 g): 0.867 W/kg

Body 5GHz(1 g): 1.171 W/kg

Test Conclusion: Pass

Test Date: Jun. 15, 2021 ~ Jun. 18, 2021

Date of Issue: Jul. 07, 2021

NOTE: This test report of test results only related to testing samples, which can be duplicated completely for the legal use with the approval of the applicant; it shall not be reproduced except in full, without the written approval of Shenzhen BALUN Technology Co., Ltd. Any objections should be raised within thirty days from the date of issue. To validate the report, please contact us.

Revision History

<u>Version</u>	<u>Issue Date</u>	<u>Revisions Content</u>
<u>Rev. 01</u>	<u>Jul. 07, 2021</u>	<u>Initial Issue</u>

TABLE OF CONTENTS

1	GENERAL INFORMATION	4
1.1	Identification of the Testing Laboratory	4
1.2	Identification of the Responsible Testing Location	4
1.3	Test Environment Condition	4
1.4	Announce	4
2	PRODUCT INFORMATION	5
2.1	Applicant Information	5
2.2	Manufacturer Information	5
2.3	General Description for Equipment under Test (EUT)	5
2.4	Ancillary Equipment	7
2.5	Technical Information	7
3	SUMMARY OF TEST RESULT	8
3.1	Test Standards	8
3.2	Device Category and SAR Limit	9
3.3	Test Result Summary	10
3.4	Test Uncertainty	11
4	MEASUREMENT SYSTEM	12
4.1	Specific Absorption Rate (SAR) Definition	12
4.2	DASY SAR System	13
5	SYSTEM VERIFICATION	21
5.1	Purpose of System Check	21
5.2	System Check Setup	21
6	TEST POSITION CONFIGURATIONS	22
6.1	Laptop Exposure Condition	22
7	MEASUREMENT PROCEDURE	23
7.1	Measurement Process Diagram	23

7.2	SAR Scan General Requirement	24
7.3	Measurement Procedure.....	25
7.4	Area & Zoom Scan Procedure	25
8	CONDUCTED RF OUPUT POWER.....	26
8.1	WIFI.....	26
8.2	Bluetooth (Aux. Antenna)	34
9	TEST EXCLUSION CONSIDERATION.....	36
9.1	Laptop Mode antenna location sketch.....	36
9.2	SAR Test Consideration Table.....	37
10	TEST RESULT	41
10.1	Bluetooth	41
10.2	WIFI 2.4GHz.....	42
10.3	WIFI 5GHz.....	43
11	SAR Measurement Variability.....	46
12	SIMULTANEOUS TRANSMISSION	47
12.1	Simultaneous Transmission Mode Considerations	47
12.2	Sum SAR of Simultaneous Transmission	48
13	TEST EQUIPMENTS LIST	51
ANNEX A	SIMULATING LIQUID VERIFICATION RESULT	52
ANNEX B	SYSTEM CHECK RESULT	53
ANNEX C	TEST DATA.....	58
ANNEX D	EUT EXTERNAL PHOTOS.....	67
ANNEX E	SAR TEST SETUP PHOTOS.....	67
ANNEX F	CALIBRATION REPORT	67

1 GENERAL INFORMATION

1.1 Identification of the Testing Laboratory

Company Name	Shenzhen BALUN Technology Co.,Ltd.
Address	Block B, 1st FL, Baisha Science and Technology Park, Shahe Xi Road, Nanshan District, Shenzhen, Guangdong Province,P. R. China
Phone Number	+86 755 6685 0100
Fax Number	+86 755 6182 4271

1.2 Identification of the Responsible Testing Location

Test Location	Shenzhen BALUN Technology Co.,Ltd.
Address	Block B, 1st FL, Baisha Science and Technology Park, Shahe Xi Road, Nanshan District, Shenzhen, Guangdong Province,P. R. China
Accreditation Certificate	The laboratory is a testing organization accredited by FCC as a accredited testing laboratory. The designation number is CN1196.
Description	All measurement facilities used to collect the measurement data are located at Block B, FL 1, Baisha Science and Technology Park, Shahe Xi Road, Nanshan District, Shenzhen, Guangdong Province, P. R. China 518055

1.3 Test Environment Condition

Ambient Temperature	21°C to 23°C
Ambient Relative Humidity	37% to 48%
Ambient Pressure	100KPa to 102KPa

1.4 Announce

- (1) The test report reference to the report template version v2.2.
- (2) The test report is invalid if not marked with the signatures of the persons responsible for preparing and approving the test report.
- (3) The test report is invalid if there is any evidence and/or falsification.
- (4) The results documented in this report apply only to the tested sample, under the conditions and modes of operation as described herein.
- (5) This document may not be altered or revised in any way unless done so by BALUN and all revisions are duly noted in the revisions section.
- (6) Content of the test report, in part or in full, cannot be used for publicity and/or promotional purposes without prior written approval from the laboratory.
- (7) The laboratory is only responsible for the data released by the laboratory, except for the part provided by the applicant.

2 PRODUCT INFORMATION

2.1 Applicant Information

Applicant	MediaTek Inc.
Address	No. 1, Dusing 1st Rd. Hsinchu Science Park Hsinchu City 30078 Taiwan

2.2 Manufacturer Information

Manufacturer	N/A
Address	N/A

2.3 General Description for Equipment under Test (EUT)

EUT Name	2TX 11ax (WiFi6) + BLE Combo Card
Model Name Under Test	MT7921
Series Model Name	N/A
Description of Model Name Differentiation	N/A
Hardware Version	N/A
Software Version	N/A
Dimensions (Approx.)	N/A
Weight (Approx.)	N/A

2.3.1 Host Information:

Product Name	Notebook Computer
Model Name	IdeaPad 5 15ALC05
Brand Name	Lenovo

2.3.2 Antenna Information:

Antenna Port	Model Name	Antenna Manufacturer	Antenna Type	Antenna Gain (dBi)			
				2.4 GHz	5.15 - 5.35 GHz	5.47 - 5.725 GHz	5.725 - 5.85 GHz
Main Antenna	DC33001PV00	Luxshare-ICT	PIFA	-1.18	-0.92	-0.87	-1.97
Auxiliary Antenna	DC33001PV10		PIFA	-1.47	-0.41	0.46	0.46
Main Antenna	DC33001PU00	Speed	PIFA	-1.83	1.90	2.78	0.83
Auxiliary Antenna	DC33001PU10		PIFA	-1.44	1.83	1.89	1.75
Main Antenna	DC33001PX00	Amphenol	PIFA	-0.41	-1.30	-1.30	-0.40
Auxiliary Antenna	DC33001PX10		PIFA	-1.71	-3.54	-3.16	-0.40
Main Antenna	DC33001ML00	Luxshare-ICT	PIFA	-2.76	-2.07	-0.72	-1.29
Auxiliary Antenna	DC33001ML10		PIFA	-1.88	-3.95	-1.95	-1.32
Main Antenna	DC33001MK00	Speed	PIFA	-0.33	2.87	1.70	0.35
Auxiliary Antenna	DC33001MK10		PIFA	-0.02	2.36	0.63	-0.40
Main Antenna	DC33001MM00	Amphenol	PIFA	0.33	-0.64	-1.87	-2.52
Auxiliary Antenna	DC33001MM10		PIFA	0.23	-2.73	-2.57	-3.49

Note: The report only shown the antenna which matches the antenna with the highest antenna gain.

2.4 Ancillary Equipment

Note: not application.

2.5 Technical Information

Network and Wireless connectivity	Bluetooth (BR+EDR+BLE) WIFI 802.11a, 802.11b, 802.11g, 802.11n, 802.11ac and 802.11ax U-NII-1/2A/2C/3
-----------------------------------	---

The requirement for the following technical information of the EUT was tested in this report:

Operating Mode	2.4G WLAN, 5G WLAN, Bluetooth	
Frequency Range	802.11b/g	2412 MHz ~ 2472 MHz
	802.11n(HT20/HT40)	2412 MHz ~ 2472 MHz
	802.11(VHT20/VHT40)	2412 MHz ~ 2472 MHz
	802.11ax(HE20/HE40)	2412 MHz ~ 2472 MHz
	802.11a	5150 MHz ~ 5250 MHz
		5250 MHz ~ 5350 MHz
		5470 MHz ~ 5725 MHz
		5725 MHz ~ 5850 MHz
	802.11n(HT20/HT40)	5150 MHz ~ 5250 MHz
		5250 MHz ~ 5350 MHz
		5470 MHz ~ 5725 MHz
		5725 MHz ~ 5850 MHz
	802.11 ac(VHT20/VHT40/VHT80)	5150 MHz ~ 5250 MHz
		5250 MHz ~ 5350 MHz
		5470 MHz ~ 5725 MHz
		5725 MHz ~ 5850 MHz
802.11 ax(HE20/HE40/HE80)	5150 MHz ~ 5250 MHz	
	5250 MHz ~ 5350 MHz	
	5470 MHz ~ 5725 MHz	
	5725 MHz ~ 5850 MHz	
Bluetooth	2402 MHz ~ 2480 MHz	
Antenna Type	WLAN: PIFA Antenna Bluetooth: PIFA Antenna	
Hotspot Function	N/A	
Exposure Category	General Population/Uncontrolled exposure	
EUT Stage	Portable Device	
Product	Type	
	<input checked="" type="checkbox"/> Production unit	<input type="checkbox"/> Identical prototype

3 SUMMARY OF TEST RESULT

3.1 Test Standards

No.	Identity	Document Title
1	47 CFR Part 2.1093	Radiofrequency radiation exposure evaluation: portable devices
2	ANSI C95.1-1992	IEEE Standard for Safety Levels with Respect to Human Exposure to Radio Frequency Electromagnetic Fields, 3 kHz to 300 GHz
3	IEEE Std. 1528-2013	Recommended Practice for Determining the Peak Spatial-Average Specific Absorption Rate (SAR) in the Human Head from Wireless Communications Devices: Measurement Techniques
4	FCC KDB 447498 D01 v06	Mobile and Portable Device RF Exposure Procedures and Equipment Authorization Policies
5	FCC KDB 865664 D01 v01r04	SAR Measurement 100 MHz to 6 GHz
6	FCC KDB 865664 D02 v01r02	RF Exposure Reporting
7	KDB 248227 D01 v02r02	SAR Guidance for IEEE 802.11 (Wi-Fi) Transmitters
8	KDB 616217 D04v01r02	SAR for laptop and tablets

3.2 Device Category and SAR Limit

This device belongs to portable device category because its radiating structure is allowed to be used within 20 centimeters of the body of the user.

Limit for General Population/Uncontrolled exposure should be applied for this device, it is 1.6 W/kg as averaged over any 1 gram of tissue.

Table of Exposure Limits:

Body Position	SAR Value (W/Kg)	
	General Population/ Uncontrolled Exposure	Occupational/ Controlled Exposure
Whole-Body SAR (averaged over the entire body)	0.08	0.4
Partial-Body SAR (averaged over any 1 gram of tissue)	1.60	8.0
SAR for hands, wrists, feet and ankles (averaged over any 10 grams of tissue)	4.0	20.0

NOTE:

General Population/Uncontrolled Exposure: Locations where there is the exposure of individuals who have no knowledge or control of their exposure. General population/uncontrolled exposure limits are applicable to situations in which the general public may be exposed or in which persons who are exposed as a consequence of their employment may not be made fully aware of the potential for exposure or cannot exercise control over their exposure. Members of the general public would come under this category when exposure is not employment-related; for example, in the case of a wireless transmitter that exposes persons in its vicinity.

Occupational/Controlled Exposure: Locations where there is exposure that may be incurred by persons who are aware of the potential for exposure, In general, occupational/controlled exposure limits are applicable to situations in which persons are exposed as a consequence of their employment, who have been made fully aware of the potential for exposure and can exercise control over their exposure. This exposure category is also applicable when the exposure is of a transient nature due to incidental passage through a location where the exposure levels may be higher than the general population/uncontrolled limits, but the exposed person is fully aware of the potential for exposure and can exercise control over his or her exposure by leaving the area or by some other appropriate means.

3.3 Test Result Summary

3.3.1 Highest SAR (1 g Value)

Band	Antenna	Maximum Scaled SAR (W/kg)	Maximum Report SAR (W/kg)
		Body	Body
Bluetooth	Aux.	0.110	1.171
2.4G WLAN	Main	0.867	
2.4G WLAN	Aux.	0.577	
5.3G WLAN	Main	0.989	
5.3G WLAN	Aux.	0.953	
5.6G WLAN	Main	1.171	
5.6G WLAN	Aux.	0.797	
5.8G WLAN	Main	1.166	
5.8G WLAN	Aux.	1.171	
Limit (W/kg)		1.60	
Verdict		Pass	

3.4 Test Uncertainty

According to KDB 865664 D01, when the highest measured 1 g SAR within a frequency band is < 1.5 W/kg, the extensive SAR measurement uncertainty analysis is not required in SAR reports submitted for equipment approval.

The maximum 1 g SAR for the EUT in this report is 1.171 W/kg, which is lower than 1.5 W/kg, so the extensive SAR measurement uncertainty analysis is not required in this report.

4 MEASUREMENT SYSTEM

4.1 Specific Absorption Rate (SAR) Definition

SAR is related to the rate at which energy is absorbed per unit mass in an object exposed to a radio field. The SAR distribution in a biological body is complicated and is usually carried out by experimental techniques or numerical modeling. The standard recommends limits for two tiers of groups, occupational/controlled and general population/uncontrolled, based on a person's awareness and ability to exercise control over his or her exposure. In general, occupational/controlled exposure limits are higher than the limits for general population/uncontrolled.

The SAR definition is the time derivative (rate) of the incremental energy (dW) absorbed by (dissipated in) an incremental mass (dm) contained in a volume element (dv) of a given density (ρ). The equation description is as below:

$$\mathbf{SAR} = \frac{d}{dt} \left(\frac{dW}{dm} \right) = \frac{d}{dt} \left(\frac{dW}{\rho dv} \right)$$

SAR is expressed in units of Watts per kilogram (W/kg) SAR measurement can be related to the electrical field in the tissue by

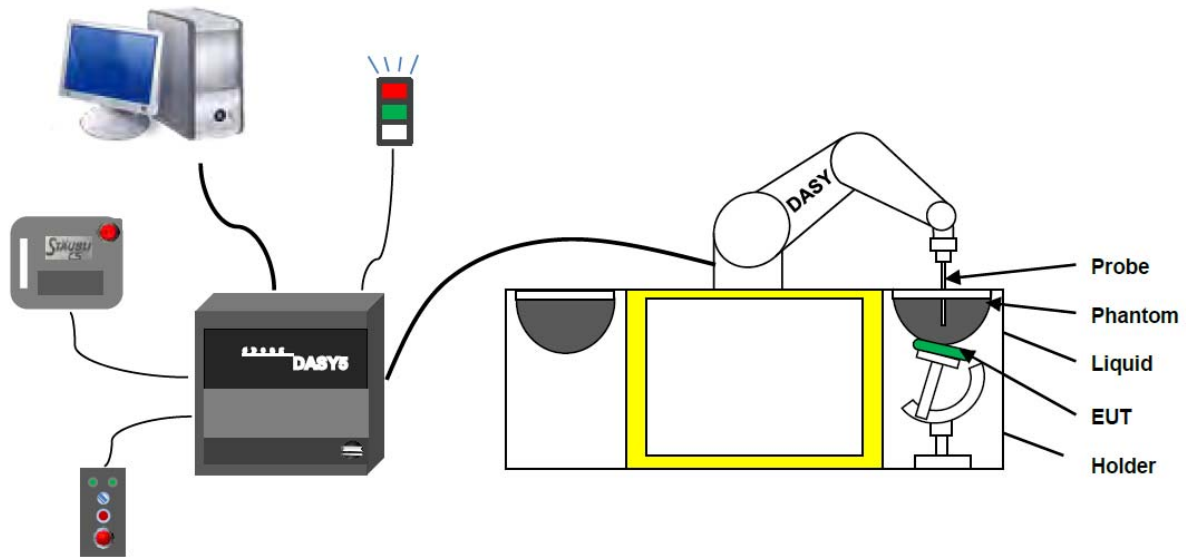
$$\mathbf{SAR} = \frac{\sigma E^2}{\rho}$$

Where: σ is the conductivity of the tissue,

ρ is the mass density of the tissue and E is the RMS electrical field strength.

4.2 DASY SAR System

4.2.1 DASY SAR System Diagram



The DASY5 system for performing compliance tests consists of the following items:

1. A standard high precision 6-axis robot (Stäubli RX family) with controller and software. An arm extension for accommodating the data acquisition electronics (DAE).
2. A dosimetric probe, i.e. an isotropic E-field probe optimized and calibrated for usage in tissue simulating liquid. The probe is equipped with an optical surface detector system.
3. A data acquisition electronic (DAE) which performs the signal amplification, signal multiplexing, AD-conversion, offset measurements, mechanical surface detection, collision detection, etc. The unit is battery powered with standard or rechargeable batteries. The signal is optically transmitted to the EOC.
4. A unit to operate the optical surface detector which is connected to the EOC.
5. The Electro-Optical Coupler (EOC) performs the conversion from the optical into a digital electric signal of the DAE. The EOC is connected to the DASYS5 measurement server.
6. The DASYS5 measurement server, which performs all real-time data evaluation for field measurements and surface detection, controls robot movements and handles safety operation.
7. DASYS5 software and SEMCAD data evaluation software.
8. Remote control with teach panel and additional circuitry for robot safety such as warning lamps, etc.
9. The generic twin phantom enabling the testing of left-hand and right-hand usage.
10. The device holder for handheld mobile phones.
11. Tissue simulating liquid mixed according to the given recipes.
12. System validation dipoles allowing to validate the proper functioning of the system.

4.2.2 Robot

The Dasy SAR system uses the high precision robots. Symmetrical design with triangular core Built-in optical fiber for surface detection system For the 6-axis controller system, Built-in shielding against static charges PEEK enclosure material (resistant to organic solvents). The robot series have many features that are important for our application:



- High precision
(repeatability ± 0.02 mm)
- High reliability
(industrial design)
- Low maintenance costs
(virtually maintenance free due to direct drive gears; no belt drives)
- Jerk-free straight movements
(brush less synchron motors; no stepper motors)
- Low ELF interference
(motor control fields shielded via the closed metallic construction shields)

4.2.3 E-Field Probe

The probe is specially designed and calibrated for use in liquids with high permittivities for the measurements the Specific Dosimetric E-Field Probe EX3DV4-SN:7510 with following specifications is used.

Construction	Symmetrical design with triangular core Built-in optical fiber for surface detection system Built-in shielding against static charges PEEK enclosure material (resistant to organic solvents, e.g., glycoether)
Calibration	ISO/IEC 17025 calibration service available
Frequency	10 MHz to 6 GHz; Linearity: ± 0.2 dB (30 MHz to 6 GHz)
Directivity	± 0.2 dB in HSL (rotation around probe axis) ; ± 0.4 dB in HSL (rotation normal to probe axis)
Dynamic range	5 μ W/g to > 100 mW/g; Linearity: ± 0.2 dB
Dimensions	Overall length: 337 mm (Tip: 9 mm) Tip diameter: 2.5 mm (Body: 10 mm) Distance from probe tip to dipole centers: 1.0 mm
Application	General dosimetry up to 3 GHz Compliance tests of mobile phones Fast automatic scanning in arbitrary phantoms (EX3DV4)

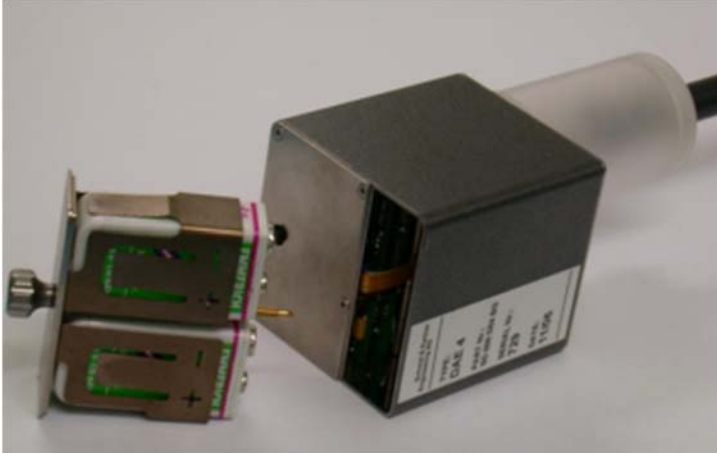


E-Field Probe Calibration Process

Probe calibration is realized, in compliance with CENELEC EN 62209-1/-2 and IEEE 1528 std, with CALISAR, Antennessa proprietary calibration system. The calibration is performed with the EN 62209-1/2 annexe technique using reference guide at the five frequencies.

4.2.4 Data Acquisition Electronics

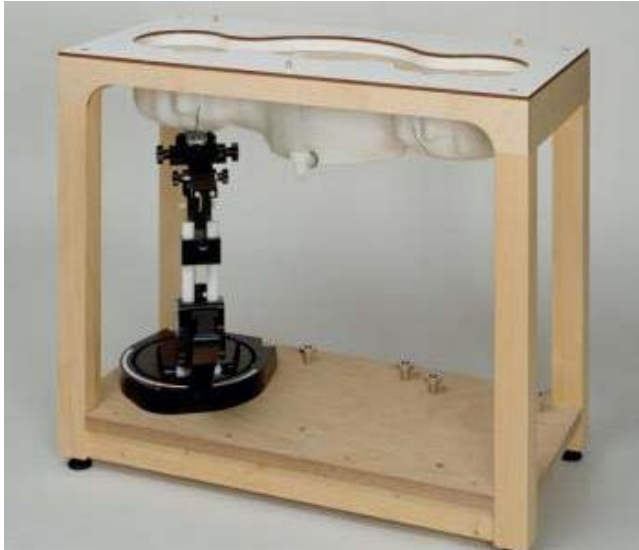
The data acquisition electronics (DAE) consist of a highly sensitive electrometer-grade preamplifier with auto-zeroing, a channel and gain-switching multiplexer, a fast 16 bit AD-converte and a command decoder with a control logic unit. Transmission to the measurement server is accomplished through an optical downlink for data and status information, as well as an optical uplink for commands and the clock.



- Input Impedance: 200M Ohm
- The Inputs: Symmetrical and Floating
- Common Mode Rejection: Above 80dB

4.2.5 Phantoms

For the measurements the Specific Anthropomorphic Mannequin (SAM) defined by the IEEE SCC-34/SC2 group is used. The phantom is a polyurethane shell integrated in a wooden table. The thickness of the phantom amounts to 2mm +/- 0.2mm. It enables the dosimetric evaluation of left and right phone usage and includes an additional flat phantom part for the simplified performance check. The phantom set-up includes a cover, which prevents the evaporation of the liquid.



- Left hand
- Right hand
- Flat phantom

Photo of Phantom SN1857



Serial Number	Material	Length	Height
SN 1857 SAM	Vinylester, glass fiber reinforced	1000	500

Phantom for compliance testing of handheld and body-mounted wireless devices in the frequency range of 30 MHz to 6 GHz. ELI4 is fully compatible with the latest draft of the standard IEC 62209 Part II and all known tissue simulating liquids. ELI4 has been optimized regarding its performance and can be integrated into our standard phantom tables. A cover prevents evaporation of the liquid. Reference markings on the phantom allow installation of the complete setup, including all predefined phantom positions and measurement grids, by teaching three points.



·Flat phantom

Photo of Phantom SN1012



Serial Number	Shell Thickness (mm)	Major ellipse axis (mm)	Minor axis (mm)
SN 1012 ELI4	2.0 ± 0.2	600	500

4.2.6 Device Holder

The DASY5 device holder has two scales for device rotation (with respect to the body axis) and the device inclination (with respect to the line between the ear openings). The plane between the ear openings and the mouth tip has a rotation angle of 65° . The bottom plate contains three pair of bolts for locking the device holder. The device holder positions are adjusted to the standard measurement positions in the three sections. This device holder is used for standard mobile phones or PDA"s only. If necessary an additional support of polystyrene material is used. Larger DUT"s (e.g. notebooks) cannot be tested using this device holder. Instead a support of bigger polystyrene cubes and thin polystyrene plates is used to position the DUT in all relevant positions to find and measure spots with maximum SAR values. Therefore those devices are normally only tested at the flat part of the SAM.



The positioning system allows obtaining cheek and tilting position with a very good accuracy. In compliance with CENELEC, the tilt angle uncertainty is lower than 1° .

4.2.7 Simulating Liquid

For SAR measurement of the field distribution inside the phantom, the phantom must be filled with homogeneous tissue simulating liquid to a depth of at least 15 cm. For head SAR testing, the liquid height from the ear reference point (ERP) of the phantom to the liquid top surface is larger than 15 cm. For body SAR testing, the liquid height from the center of the flat phantom to the liquid top surface is larger than 15 cm. The nominal dielectric values of the tissue simulating liquids in the phantom and the tolerance of 5%.



The following table gives the recipes for tissue simulating liquid and the theoretical Conductivity/Permittivity.

Head (Reference IEEE1528)								
Frequency (MHz)	Water (%)	Sugar (%)	Cellulose (%)	Salt (%)	Preventol (%)	DGBE (%)	Conductivity σ (S/m)	Permittivity ϵ
750	41.1	57.0	0.2	1.4	0.2	0	0.89	41.9
835	40.3	57.9	0.2	1.4	0.2	0	0.90	41.5
900	40.3	57.9	0.2	1.4	0.2	0	0.97	41.5
1800, 1900, 2000	55.2	0	0	0.3	0	44.5	1.4	40.0
2450	55.0	0	0	0.1	0	44.9	1.80	39.2
2600	54.9	0	0	0.1	0	45.0	1.96	39.0
Frequency (MHz)	Water (%)	Hexyl Carbitol (%)			Triton X-100 (%)		Conductivity σ (S/m)	Permittivity ϵ
5200	62.52	17.24			17.24		4.66	36.0
5800	62.52	17.24			17.24		5.27	35.3
Body (From instrument manufacturer)								
Frequency (MHz)	Water (%)	Sugar (%)	Cellulose (%)	Salt (%)	Preventol (%)	DGBE (%)	Conductivity σ (S/m)	Permittivity ϵ
750	51.7	47.2	0	0.9	0.1	0	0.96	55.5
835	50.8	48.2	0	0.9	0.1	0	0.97	55.2
900	50.8	48.2	0	0.9	0.1	0	1.05	55.0
1800, 1900, 2000	70.2	0	0	0.4	0	29.4	1.52	53.3
2450	68.6	0	0	0.1	0	31.3	1.95	52.7
2600	68.2	0	0	0.1	0	31.7	2.16	52.5
Frequency(MHz)	Water	DGBE (%)			Salt (%)		Conductivity σ (S/m)	Permittivity ϵ
5200	78.60	21.40			/		5.54	47.86
5800	78.50	21.40			0.1		6.0	48.20

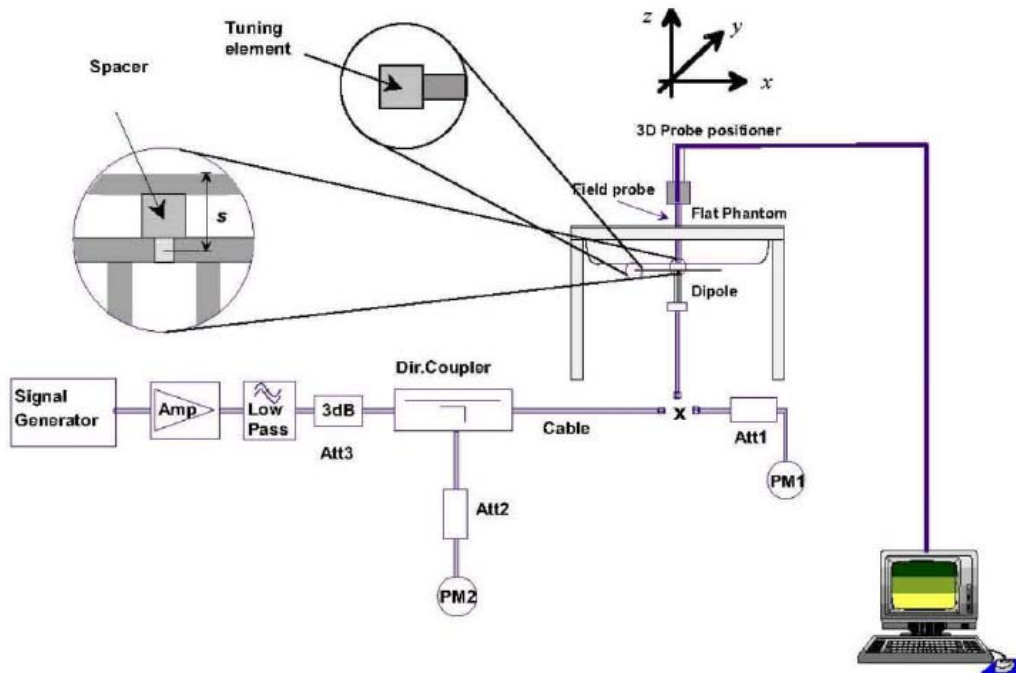
5 SYSTEM VERIFICATION

5.1 Purpose of System Check

The system performance check verifies that the system operates within its specifications. System and operator errors can be detected and corrected. It is recommended that the system performance check be performed prior to any usage of the system in order to guarantee reproducible results. The system performance check uses normal SAR measurements in a simplified setup with a well characterized source. This setup was selected to give a high sensitivity to all parameters that might fail or vary over time. The system check does not intend to replace the calibration of the components, but indicates situations where the system uncertainty is exceeded due to drift or failure.

5.2 System Check Setup

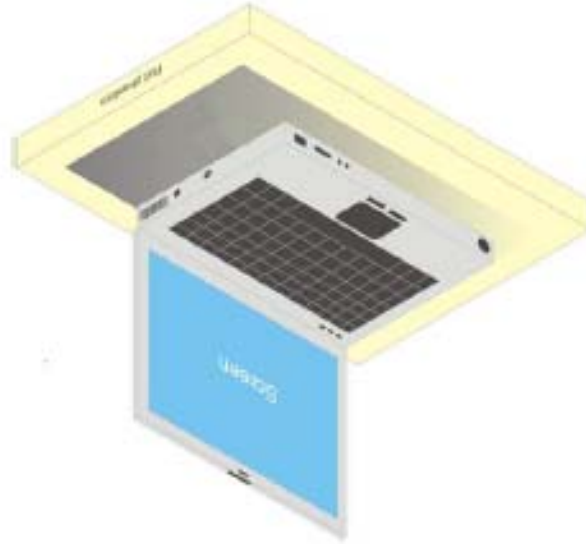
In the simplified setup for system evaluation, the EUT is replaced by a calibrated dipole and the power source is replaced by a continuous wave that comes from a signal generator. The calibrated dipole must be placed beneath the flat phantom section of the SAM twin phantom with the correct distance holder. The distance holder should touch the phantom surface with a light pressure at the reference marking and be oriented parallel to the long side of the phantom. The equipment setup is shown below:



6 TEST POSITION CONFIGURATIONS

6.1 Laptop Exposure Condition

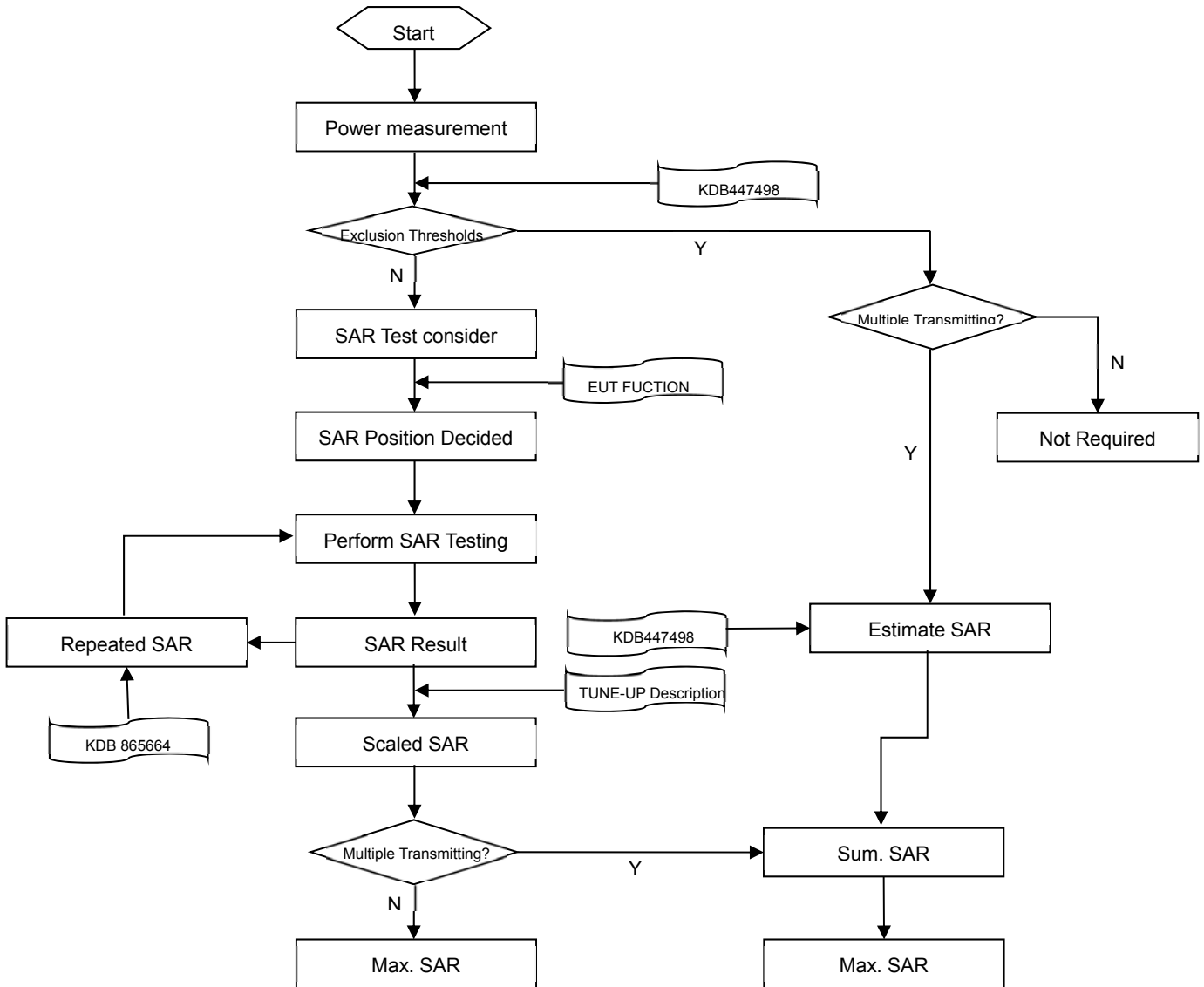
This DUT should consider one position which is bottom of laptop touching with phantom 0 mm air gap and the screen portion of the device shall be an open position at a 90° angle.



Note: For feet in Laptop, the antenna location can be positioned against the user during normal use and the additional separation introduced by such protrusions between the outer housing and a flat phantom is <5mm;

7 MEASUREMENT PROCEDURE

7.1 Measurement Process Diagram



7.2 SAR Scan General Requirement

Probe boundary effect error compensation is required for measurements with the probe tip closer than half a probe tip diameter to the phantom surface. Both the probe tip diameter and sensor offset distance must satisfy measurement protocols; to ensure probe boundary effect errors are minimized and the higher fields closest to the phantom surface can be correctly measured and extrapolated to the phantom surface for computing 1 g SAR. Tolerances of the post-processing algorithms must be verified by the test laboratory for the scan resolutions used in the SAR measurements, according to the reference distribution functions specified in IEEE Std 1528-2013.

		≤3GHz	>3GHz
Maximum distance from closest measurement point (geometric center of probe sensors) to phantom surface		5±1 mm	$\frac{1}{2} \cdot \delta \cdot \ln(2) \pm 0.5$ mm
Maximum probe angle from probe axis to phantom surface normal at the measurement location		30°±1°	20°±1°
Maximum area scan spatial resolution: Δx Area , Δy Area		≤ 2 GHz: ≤ 15 mm 2 – 3 GHz: ≤ 12 mm	3–4 GHz: ≤ 12 mm 4 – 6 GHz: ≤ 10 mm
		When the x or y dimension of the test device, in the measurement plane orientation, is smaller than the above, the measurement resolution must be ≤ the corresponding x or y dimension of the test device with at least one measurement point on the test device.	
Maximum zoom scan spatial resolution: Δx Zoom , Δy Zoom		≤ 2 GHz: ≤ 8 mm 2 – 3 GHz: ≤ 5 mm*	3–4 GHz: ≤ 5 mm* 4 – 6 GHz: ≤ 4 mm*
Maximum zoom scan spatial resolution, normal to phantom surface	uniform grid: Δz Zoom (n)	≤ 5 mm	3–4 GHz: ≤ 4 mm
			4–5 GHz: ≤ 3 mm
			5–6 GHz: ≤ 2 mm
	graded grid	Δz Zoom (1): between 1st two points closest to phantom surface Δz Zoom (n>1): between subsequent points	≤ 4 mm
4–5 GHz: ≤ 2.5 mm			
		≤ 1.5 · Δz Zoom (n-1)	
Minimum zoom scan volume	x, y, z	≥30 mm	3–4 GHz: ≥ 28 mm
			4–5 GHz: ≥ 25 mm
			5–6 GHz: ≥ 22 mm
Note: 1. δ is the penetration depth of a plane-wave at normal incidence to the tissue medium; see draft standard IEEE P1528-2011 for details. 2. * When zoom scan is required and the reported SAR from the area scan based 1 g SAR estimation procedures of KDB 447498 is ≤ 1.4 W/kg, ≤ 8 mm, ≤ 7 mm and ≤ 5 mm zoom scan resolution may be applied, respectively, for 2 GHz to 3GHz, 3 GHz to 4 GHz and 4 GHz to 6 GHz.			

7.3 Measurement Procedure

The following steps are used for each test position

- a. Establish a call with the maximum output power with a base station simulator. The connection between the mobile and the base station simulator is established via air interface
- b. Measurement of the local E-field value at a fixed location. This value serves as a reference value for calculating a possible power drift.
- c. Measurement of the SAR distribution with a grid of 8 to 16mm * 8 to 16 mm and a constant distance to the inner surface of the phantom. Since the sensors cannot directly measure at the inner phantom surface, the values between the sensors and the inner phantom surface are extrapolated. With these values the area of the maximum SAR is calculated by an interpolation scheme.
- d. Around this point, a cube of 30 * 30 * 30 mm or 32 * 32 * 32 mm is assessed by measuring 5 or 8 * 5 or 8*4 or 5 mm. With these data, the peak spatial-average SAR value can be calculated.

7.4 Area & Zoom Scan Procedure

First Area Scan is used to locate the approximate location(s) of the local peak SAR value(s). The measurement grid within an Area Scan is defined by the grid extent, grid step size and grid offset. Next, in order to determine the EM field distribution in a three-dimensional spatial extension, Zoom Scan is required. The Zoom Scan is performed around the highest E-field value to determine the averaged SAR-distribution over 10 g. Area scan and zoom scan resolution setting follows KDB 865664 D01v01r04 quoted below.

When the 1 g SAR of the highest peak is within 2 dB of the SAR limit, additional zoom scans are required for other peaks within 2 dB of the highest peak that have not been included in any zoom scan to ensure there is no increase in SAR.

8 CONDUCTED RF OUPUT POWER

8.1 WIFI

8.1.1 2.4G WIFI (Main Antenna)

Band (GHz)	Mode	Channel	Freq. (MHz)	Conducted Power (dBm)	Tune-up Power Limit (dBm)	SAR Test Require.
2.4 (2.4~2.4835)	802.11b	1	2412	18.57	19.00	Yes
		2	2417	18.53	19.00	No
		6	2437	18.64	19.00	Yes
		10	2457	18.51	19.00	No
		11	2462	18.52	19.00	Yes
		12	2467	15.47	16.00	No
		13	2472	9.09	10.00	No
	802.11g	1	2412	17.03	18.00	No
		2	2417	17.85	18.50	No
		6	2437	17.89	18.50	No
		10	2457	17.97	18.50	No
		11	2462	16.72	18.00	No
		12	2467	11.63	13.00	No
		13	2472	6.48	7.50	No
	802.11n(HT20)	1	2412	16.08	17.00	No
		2	2417	17.05	18.00	No
		6	2437	17.53	18.50	No
		10	2457	16.80	18.00	No
		11	2462	15.70	17.00	No
		12	2467	9.62	11.00	No
		13	2472	5.10	6.00	No
	802.11n(HT40)	3	2422	14.77	16.00	No
		4	2427	15.04	16.00	No
		6	2437	15.85	17.00	No
		8	2447	14.91	16.00	No
		9	2452	14.66	16.00	No
		10	2457	8.04	9.00	No
		11	2462	6.07	7.00	No
	802.11(VHT20)	1	2412	16.23	17.00	No
		2	2417	17.11	18.00	No
		6	2437	17.72	18.50	No
		10	2457	17.19	18.00	No
		11	2462	16.27	17.00	No
		12	2467	9.72	11.00	No
		13	2472	5.33	6.00	No
	802.11(VHT40)	3	2422	14.78	16.00	No
4		2427	15.15	16.00	No	
6		2437	15.81	17.00	No	

		8	2447	15.11	16.00	No
		9	2452	14.65	16.00	No
		10	2457	8.25	9.00	No
		11	2462	6.21	7.00	No
	802.11ax(HE20) (SU)	1	2412	16.33	17.50	No
		2	2417	17.73	18.00	No
		6	2437	17.68	18.50	No
		10	2457	17.28	18.00	No
		11	2462	16.25	17.00	No
		12	2467	9.99	11.00	No
		13	2472	5.62	6.00	No
	802.11ax(HE40) (SU)	3	2422	14.84	16.00	No
		4	2427	15.39	16.50	No
		6	2437	15.92	17.00	No
		8	2447	15.23	16.00	No
		9	2452	14.79	16.00	No
		10	2457	8.26	9.00	No
		11	2462	6.37	7.50	No

Note: According KDB 248227 D01 SAR is not required for the following 2.4 GHz OFDM conditions. When the highest reported SAR for DSSS is adjusted by the ratio of OFDM to DSSS specified maximum output power and the adjusted SAR is ≤ 1.2 W/kg.

Adjusted SAR = Report SAR * (max power (OFDM)/ max power (DSSS)) = 0.867 * (70.79 mw)/(79.43 mw) = 0.773 W/kg, so the 2.4GHz OFDM SAR test is not required.

8.1.2 2.4G WIFI (Aux. Antenna)

Band (GHz)	Mode	Channel	Freq. (MHz)	Conducted Power (dBm)	Tune-up Power Limit (dBm)	SAR Test Require.
2.4 (2.4~2.4835)	802.11b	1	2412	18.77	19.00	Yes
		2	2417	18.50	19.00	No
		6	2437	18.93	19.00	Yes
		10	2457	18.53	19.00	No
		11	2462	18.57	19.00	Yes
		12	2467	15.46	16.00	No
		13	2472	8.95	10.00	No
	802.11g	1	2412	16.96	18.00	No
		2	2417	18.04	18.50	No
		6	2437	18.15	18.50	No
		10	2457	18.17	18.50	No
		11	2462	16.89	18.00	No
		12	2467	11.97	13.00	No
		13	2472	7.05	7.50	No
	802.11n(HT20)	1	2412	16.26	17.00	No
		2	2417	17.28	18.00	No
		6	2437	17.78	18.50	No

		10	2457	17.15	18.00	No
		11	2462	16.14	17.00	No
		12	2467	10.02	11.00	No
		13	2472	5.39	6.00	No
	802.11n(HT40)	3	2422	14.87	16.00	No
		4	2427	15.36	16.00	No
		6	2437	15.99	17.00	No
		8	2447	15.17	16.00	No
		9	2452	14.63	16.00	No
		10	2457	8.39	9.00	No
		11	2462	6.50	7.00	No
	802.11(VHT20)	1	2412	16.39	17.00	No
		2	2417	17.33	18.00	No
		6	2437	17.96	18.50	No
		10	2457	17.47	18.00	No
		11	2462	16.58	17.00	No
		12	2467	10.28	11.00	No
		13	2472	5.86	6.00	No
	802.11(VHT40)	3	2422	14.87	16.00	No
		4	2427	15.44	16.00	No
		6	2437	16.32	17.00	No
		8	2447	15.59	16.00	No
		9	2452	14.84	16.00	No
		10	2457	8.73	9.00	No
		11	2462	6.62	7.00	No
	802.11ax(HE20) (SU)	1	2412	16.58	17.50	No
		2	2417	17.61	18.00	No
		6	2437	18.19	18.50	No
		10	2457	17.55	18.00	No
		11	2462	16.76	17.00	No
		12	2467	10.38	11.00	No
		13	2472	5.92	6.00	No
	802.11ax(HE40) (SU)	3	2422	15.28	16.00	No
4		2427	15.73	16.50	No	
6		2437	16.47	17.00	No	
8		2447	15.81	16.00	No	
9		2452	14.34	16.00	No	
10		2457	8.45	9.00	No	
11		2462	6.48	7.50	No	

Note: According KDB 248227 D01 SAR is not required for the following 2.4 GHz OFDM conditions. When the highest reported SAR for DSSS is adjusted by the ratio of OFDM to DSSS specified maximum output power and the adjusted SAR is ≤ 1.2 W/kg.

Adjusted SAR = Report SAR * (max power (OFDM)/ max power (DSSS)) = 0.577 * (70.79 mw)/(79.43 mw) =0.514 W/kg, so the 2.4GHz OFDM SAR test is not required.

8.1.3 5G WIFI (Main Antenna)

Band (GHz)	Mode	Channel	Freq. (MHz)	Conducted Power (dBm)	Tune-up Power Limit (dBm)	SAR Test Require.
5.2 (5.15~5.25)	802.11a	36	5180	15.47	16.50	No
		40	5200	16.46	16.50	No
		48	5240	16.23	16.50	No
	802.11n(HT20)	36	5180	15.91	16.50	No
		40	5200	15.95	16.50	No
		48	5240	16.20	16.50	No
	802.11n(HT40)	38	5190	15.27	16.00	No
		46	5230	16.00	16.50	No
	802.11ac(VHT20)	36	5180	15.32	16.50	No
		40	5200	16.20	16.50	No
		48	5240	16.41	16.50	No
	802.11ac(VHT40)	38	5190	15.35	16.00	No
		46	5230	16.16	16.50	No
	802.11ac(VHT80)	42	5210	13.76	15.00	No
	802.11ax(HE20) (SU)	36	5180	16.21	16.50	No
40		5200	16.23	16.50	No	
48		5240	16.02	16.50	No	
802.11ax(HE40) (SU)	38	5190	15.57	16.00	No	
	46	5230	16.07	16.50	No	
802.11ax(HE80) (SU)	42	5210	14.22	15.00	No	
5.3 (5.25~5.35)	802.11a	52	5260	16.84	17.00	Yes
		60	5300	16.99	17.00	Yes
		64	5320	15.55	17.00	Yes
	802.11n(HT20)	52	5260	16.02	16.50	No
		60	5300	16.04	16.50	No
		64	5320	15.58	16.00	No
	802.11n(HT40)	54	5270	15.99	16.50	No
		62	5310	15.41	16.00	No
	802.11ac(VHT20)	52	5260	16.11	16.50	No
		60	5300	16.12	16.50	No
		64	5320	15.47	16.00	No
	802.11ac(VHT40)	54	5270	16.24	16.50	No
		62	5310	15.11	16.00	No
	802.11ac(VHT80)	58	5290	14.09	15.00	No
	802.11ax(HE20) (SU)	52	5260	16.09	16.50	No
60		5300	16.23	16.50	No	
64		5320	15.74	16.00	No	
802.11ax(HE40) (SU)	54	5270	16.47	16.50	No	
	62	5310	15.27	16.00	No	
802.11ax(HE80) (SU)	58	5290	14.38	15.00	No	

5.6 (5.47~5.725)	802.11a	100	5500	15.73	16.00	Yes
		116	5580	15.67	16.00	Yes
		140	5700	15.63	16.00	Yes
		144	5720	15.81	16.00	Yes
	802.11n(HT20)	100	5500	14.91	15.50	No
		116	5580	14.97	15.50	No
		140	5700	15.07	15.50	No
		144	5720	13.44	14.00	No
	802.11n(HT40)	102	5510	15.11	15.50	No
		110	5550	14.97	15.50	No
		134	5670	15.00	15.50	No
		142	5710	10.64	11.00	No
	802.11ac(VHT20)	100	5500	15.14	15.50	No
		116	5580	15.09	15.50	No
		140	5700	15.13	15.50	No
		144	5720	13.36	14.00	No
	802.11ac(VHT40)	102	5510	15.11	15.50	No
		110	5550	15.41	15.50	No
		134	5670	15.37	15.50	No
		142	5710	10.74	11.00	No
	802.11ac(VHT80)	106	5530	14.62	15.50	No
		138	5690	14.71	15.00	No
	802.11ax(HE20) (SU)	100	5500	15.29	15.50	No
		116	5580	15.40	15.50	No
		140	5700	15.42	15.50	No
		144	5720	13.43	14.00	No
	802.11ax(HE40) (SU)	102	5510	15.11	15.50	No
		110	5550	15.28	15.50	No
		134	5670	15.12	15.50	No
		142	5710	10.86	11.00	No
	802.11ax(HE80) (SU)	106	5530	14.58	15.50	No
		138	5690	14.96	15.00	No
5.8 (5.725~5.850)	802.11a	149	5745	16.86	17.00	Yes
		157	5785	16.95	17.00	Yes
		165	5825	16.97	17.00	Yes
	802.11n(HT20)	149	5745	15.98	16.50	No
		157	5785	16.16	16.50	No
		165	5825	15.93	16.50	No
	802.11n(HT40)	151	5755	16.07	16.50	No
		159	5795	16.03	16.50	No
	802.11ac(VHT20)	149	5745	16.12	16.50	No
		157	5785	16.37	16.50	No
		165	5825	16.08	16.50	No
	802.11ac(VHT40)	151	5755	16.02	16.50	No
159		5795	16.21	16.50	No	

	802.11ac(VHT80)	155	5775	15.63	16.50	No
	802.11ax(HE20) (SU)	149	5745	15.95	16.50	No
		157	5785	16.07	16.50	No
		165	5825	16.47	16.50	No
	802.11ax(HE40) (SU)	151	5755	16.35	16.50	No
		159	5795	16.13	16.50	No
	802.11ax(HE80) (SU)	155	5775	15.85	16.50	No

8.1.4 5G WIFI (Aux. Antenna)

Band (GHz)	Mode	Channel	Freq. (MHz)	Conducted Power (dBm)	Tune-up Power Limit (dBm)	SAR Test Require.
5.2 (5.15~5.25)	802.11a	36	5180	15.20	16.00	No
		40	5200	16.15	16.50	No
		48	5240	16.42	16.50	No
	802.11n(HT20)	36	5180	15.62	16.00	No
		40	5200	16.10	16.50	No
		48	5240	16.01	16.50	No
	802.11n(HT40)	38	5190	14.63	15.00	No
		46	5230	16.06	16.50	No
	802.11ac(VHT20)	36	5180	15.64	16.00	No
		40	5200	16.03	16.50	No
		48	5240	16.27	16.50	No
	802.11ac(VHT40)	38	5190	14.67	15.00	No
		46	5230	16.46	16.50	No
	802.11ac(VHT80)	42	5210	13.38	14.00	No
	802.11ax(HE20) (SU)	36	5180	15.74	16.00	No
		40	5200	16.07	16.50	No
		48	5240	16.49	16.50	No
	802.11ax(HE40) (SU)	38	5190	15.17	16.00	No
46		5230	16.27	16.50	No	
802.11ax(HE80) (SU)	42	5210	13.96	15.00	No	
5.3 (5.25~5.35)	802.11a	52	5260	16.51	17.00	Yes
		60	5300	16.95	17.00	Yes
		64	5320	16.03	17.00	Yes
	802.11n(HT20)	52	5260	16.11	16.50	No
		60	5300	15.96	16.50	No
		64	5320	15.42	16.00	No
	802.11n(HT40)	54	5270	16.19	16.50	No
		62	5310	15.52	16.00	No
	802.11ac(VHT20)	52	5260	16.18	16.50	No
		60	5300	16.08	16.50	No
		64	5320	15.46	16.00	No

	802.11ac(VHT40)	54	5270	16.46	16.50	No	
		62	5310	14.84	16.00	No	
	802.11ac(VHT80)	58	5290	13.70	15.00	No	
	802.11ax(HE20) (SU)	52	5260	16.01	16.50	No	
		60	5300	16.04	16.50	No	
		64	5320	15.63	16.50	No	
	802.11ax(HE40) (SU)	54	5270	16.30	16.50	No	
		62	5310	15.18	16.00	No	
	802.11ax(HE80) (SU)	58	5290	14.08	15.00	No	
	5.6 (5.47~5.725)	802.11a	100	5500	15.97	16.00	Yes
116			5580	15.68	16.00	Yes	
140			5700	15.69	16.00	Yes	
144			5720	15.44	16.00	Yes	
802.11n(HT20)		100	5500	14.92	15.50	No	
		116	5580	14.92	15.50	No	
		140	5700	15.01	15.50	No	
		144	5720	13.61	12.00	No	
802.11n(HT40)		102	5510	15.10	15.50	No	
		110	5550	15.05	15.50	No	
		134	5670	15.07	15.50	No	
		142	5710	9.66	10.00	No	
802.11ac(VHT20)		100	5500	15.31	15.50	No	
		116	5580	15.33	15.50	No	
		140	5700	15.11	15.50	No	
		144	5720	11.81	12.00	No	
802.11ac(VHT40)		102	5510	15.08	15.50	No	
		110	5550	15.12	15.50	No	
		134	5670	15.20	15.50	No	
		142	5710	9.91	10.00	No	
802.11ac(VHT80)		106	5530	14.02	15.00	No	
		138	5690	7.92	8.00	No	
802.11ax(HE20) (SU)		100	5500	15.18	15.50	No	
		116	5580	15.09	15.50	No	
		140	5700	15.32	15.50	No	
		144	5720	12.73	13.00	No	
802.11ax(HE40) (SU)		102	5510	15.15	15.50	No	
		110	5550	15.37	15.50	No	
		134	5670	15.22	15.50	No	
		142	5710	9.92	10.00	No	
802.11ax(HE80) (SU)		106	5530	13.99	15.00	No	
		138	5690	7.73	8.00	No	
5.8 (5.725~5.850)		802.11a	149	5745	16.93	17.00	Yes
			157	5785	16.91	17.00	Yes
			165	5825	16.55	17.00	Yes

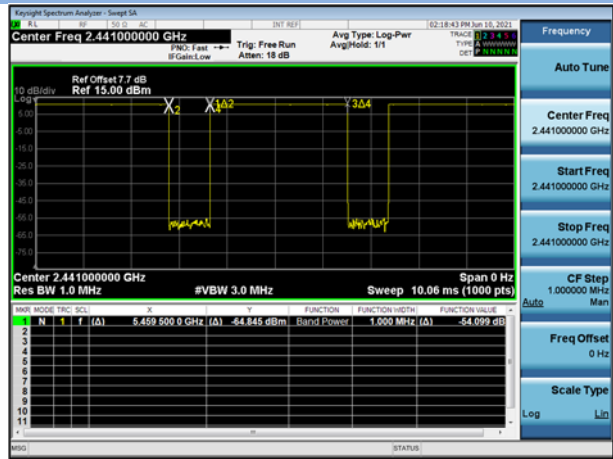
	802.11n(HT20)	149	5745	16.01	16.50	No
		157	5785	16.18	16.50	No
		165	5825	16.11	16.50	No
	802.11n(HT40)	151	5755	16.12	16.50	No
		159	5795	16.15	16.50	No
	802.11ac(VHT20)	149	5745	16.10	16.50	No
		157	5785	16.07	16.50	No
		165	5825	16.41	16.50	No
	802.11ac(VHT40)	151	5755	16.24	16.50	No
		159	5795	16.12	16.50	No
	802.11ac(VHT80)	155	5775	15.53	16.50	No
	802.11ax(HE20) (SU)	149	5745	16.04	16.50	No
		157	5785	16.13	16.50	No
		165	5825	16.14	16.50	No
	802.11ax(HE40) (SU)	151	5755	16.02	16.50	No
		159	5795	16.06	16.50	No
	802.11ax(HE80) (SU)	155	5775	15.14	16.50	No

8.2 Bluetooth (Aux. Antenna)

Mode	GFSK			$\pi/4$ -DQPSK		
Channel	0	39	78	0	39	78
Frequency (MHz)	2402	2441	2480	2402	2441	2480
Conducted Power (dBm)	10.80	10.73	10.63	10.52	10.55	10.63
Tune-up Power Limit (dBm)	12.00	12.00	12.00	12.00	12.00	12.00
Mode	8-DPSK			/		
Channel	0	39	78	/	/	/
Frequency (MHz)	2402	2441	2480	/	/	/
Conducted Power (dBm)	10.69	10.74	10.54	/	/	/
Tune-up Power Limit (dBm)	12.00	12.00	12.00	/		
Mode	BLE (1Mbps)			BLE (2Mbps)		
Channel	0	19	39	0	19	39
Frequency (MHz)	2402	2440	2480	2402	2440	2480
Conducted Power (dBm)	10.98	11.24	10.88	11.00	11.41	10.90
Tune-up Power Limit (dBm)	12.00	12.00	12.00	12.00	12.00	12.00

Duty Cycle

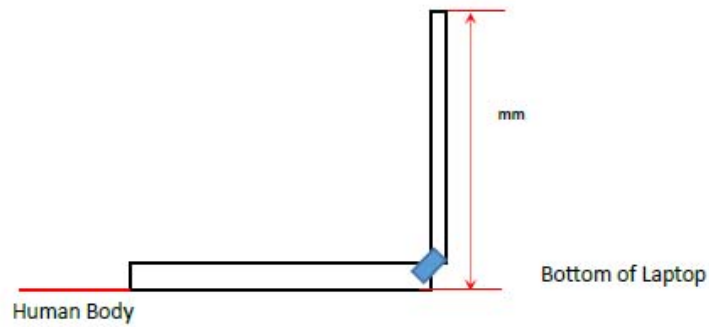
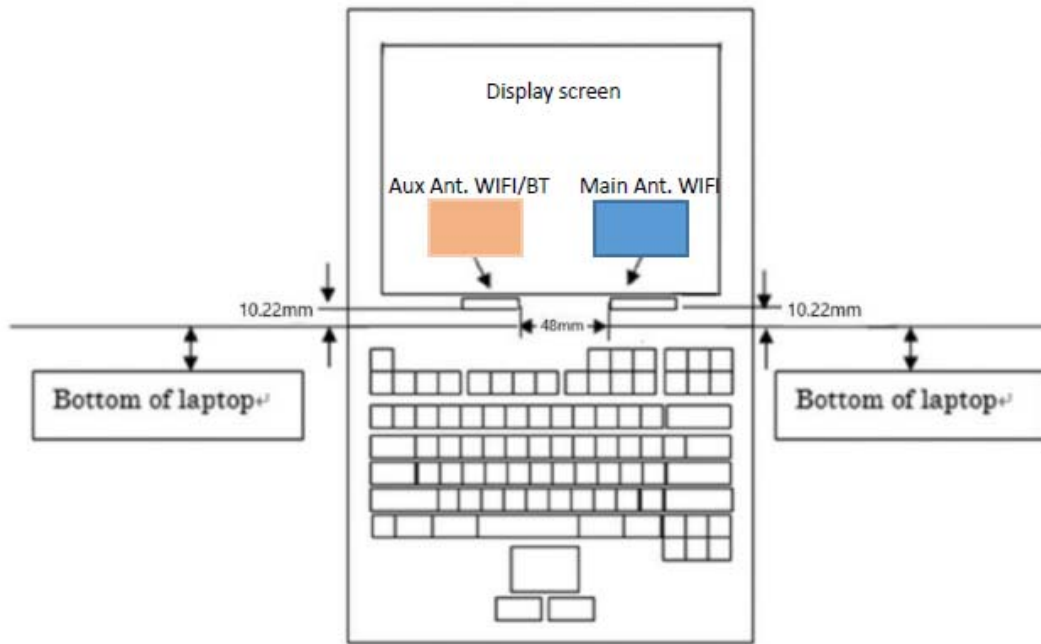
Bluetooth GFSK



Note: The Bluetooth duty cycle is 76.88 % as following figure, according to 2016 Oct. TCB workshop for Bluetooth SAR scaling need further consideration and the maximum duty cycle is 100%, therefore the actual duty cycle will be scaled up to 100% for Bluetooth reported SAR calculation.

9 TEST EXCLUSION CONSIDERATION

9.1 Laptop Mode antenna location sketch



- Aux Ant. WIFI/BT
- Main Ant. WIFI

9.2 SAR Test Consideration Table

According with FCC KDB 447498 D01, Appendix A, <SAR Test Exclusion Thresholds for 100 MHz - 6 GHz and ≤ 50 mm> Table, this Device SAR test configurations consider as following :

Main Antenna

Band	Mode	Max. Conducted Power		Test Position Configurations
		dBm	mW	Bottom Edge
WLAN 2.4 G	Distance to User		<5mm	
	802.11b	19.00	79.43	Yes
	802.11g	18.50	70.79	No
	802.11n(HT20)	18.50	70.79	No
	802.11n(HT40)	17.00	50.12	No
	802.11(VHT20)	18.50	70.79	No
	802.11(VHT40)	17.00	50.12	No
	802.11ax(HE20) (SU)	18.50	70.79	No
	802.11ax(HE40) (SU)	17.00	50.12	No
WLAN 5.2 G	Distance to User		<5mm	
	802.11a	16.50	44.67	No
	802.11n(HT20)	16.50	44.67	No
	802.11n(HT40)	16.50	44.67	No
	802.11ac(VHT20)	16.50	44.67	No
	802.11ac(VHT40)	16.50	44.67	No
	802.11ac(VHT80)	15.00	31.62	No
	802.11ax(HE20) (SU)	16.50	44.67	No
	802.11ax(HE40) (SU)	16.50	44.67	No
802.11ax(HE80) (SU)	15.00	31.62	No	
WLAN 5.3 G	Distance to User		<5mm	
	802.11a	17.00	50.12	Yes
	802.11n(HT20)	16.50	44.67	No
	802.11n(HT40)	16.50	44.67	No
	802.11ac(VHT20)	16.50	44.67	No
	802.11ac(VHT40)	16.50	44.67	No
	802.11ac(VHT80)	15.00	31.62	No
	802.11ax(HE20) (SU)	16.50	44.67	No
	802.11ax(HE40) (SU)	16.50	44.67	No
802.11ax(HE80) (SU)	15.00	31.62	No	
WLAN 5.6 G	Distance to User		<5mm	
	802.11a	16.00	39.81	Yes
	802.11n(HT20)	15.50	35.48	No
	802.11n(HT40)	15.50	35.48	No
	802.11ac(VHT20)	15.50	35.48	No
	802.11ac(VHT40)	15.50	35.48	No
802.11ac(VHT80)	15.50	35.48	No	

	802.11ax(HE20) (SU)	15.50	35.48	No
	802.11ax(HE40) (SU)	15.50	35.48	No
	802.11ax(HE80) (SU)	15.50	35.48	No
WLAN 5.8 G	Distance to User			<5mm
	802.11a	17.00	50.12	Yes
	802.11n(HT20)	16.50	44.67	No
	802.11n(HT40)	16.50	44.67	No
	802.11ac(VHT20)	16.50	44.67	No
	802.11ac(VHT40)	16.50	44.67	No
	802.11ac(VHT80)	16.50	44.67	No
	802.11ax(HE20) (SU)	16.50	44.67	No
	802.11ax(HE40) (SU)	16.50	44.67	No
	802.11ax(HE80) (SU)	16.50	44.67	No

Aux Antenna

Band	Mode	Max. Conducted Power		Test Position Configurations
		dBm	mW	Bottom Edge
WLAN 2.4 G	Distance to User			<5mm
	802.11b	19.00	79.43	Yes
	802.11g	18.50	70.79	No
	802.11n(HT20)	18.50	70.79	No
	802.11n(HT40)	17.00	50.12	No
	802.11(VHT20)	18.50	70.79	No
	802.11(VHT40)	17.00	50.12	No
	802.11ax(HE20) (SU)	18.50	70.79	No
	802.11ax(HE40) (SU)	17.00	50.12	No
WLAN 5.2 G	Distance to User			<5mm
	802.11a	16.50	44.67	No
	802.11n(HT20)	16.50	44.67	No
	802.11n(HT40)	16.50	44.67	No
	802.11ac(VHT20)	16.50	44.67	No
	802.11ac(VHT40)	16.50	44.67	No
	802.11ac(VHT80)	14.00	25.12	No
	802.11ax(HE20) (SU)	16.50	44.67	No
	802.11ax(HE40) (SU)	16.50	44.67	No
802.11ax(HE80) (SU)	15.00	31.62	No	
WLAN 5.3 G	Distance to User			<5mm
	802.11a	17.00	50.12	Yes
	802.11n(HT20)	16.50	44.67	No
	802.11n(HT40)	16.50	44.67	No
	802.11ac(VHT20)	16.50	44.67	No
	802.11ac(VHT40)	16.50	44.67	No
802.11ac(VHT80)	15.00	31.62	No	

	802.11ax(HE20) (SU)	16.50	44.67	No
	802.11ax(HE40) (SU)	16.50	44.67	No
	802.11ax(HE80) (SU)	15.00	31.62	No
WLAN 5.6 G	Distance to User			<5mm
	802.11a	16.00	39.81	Yes
	802.11n(HT20)	15.50	35.48	No
	802.11n(HT40)	15.50	35.48	No
	802.11ac(VHT20)	15.50	35.48	No
	802.11ac(VHT40)	15.50	35.48	No
	802.11ac(VHT80)	15.00	31.62	No
	802.11ax(HE20) (SU)	15.50	35.48	No
	802.11ax(HE40) (SU)	15.50	35.48	No
	802.11ax(HE80) (SU)	15.00	31.62	No
WLAN 5.8 G	Distance to User			<5mm
	802.11a	17.00	50.12	Yes
	802.11n(HT20)	16.50	44.67	No
	802.11n(HT40)	16.50	44.67	No
	802.11ac(VHT20)	16.50	44.67	No
	802.11ac(VHT40)	16.50	44.67	No
	802.11ac(VHT80)	16.50	44.67	No
	802.11ax(HE20) (SU)	16.50	44.67	No
	802.11ax(HE40) (SU)	16.50	44.67	No
	802.11ax(HE80) (SU)	16.50	44.67	No
Bluetooth	Distance to User			<5mm
	BR/EDR	12.00	15.85	Yes
	BLE	12.00	15.85	No

Note:

- Maximum power is the source-based time-average power and represents the maximum RF output power including tune-up tolerance among production units
- Per KDB 447498 D01, for larger devices, the test separation distance of adjacent edge configuration is determined by the closest separation between the antenna and the user.
- Per KDB 447498 D01, standalone SAR test exclusion threshold is applied; If the distance of the antenna to the user is < 5mm, 5mm is used to determine SAR exclusion threshold
- Per KDB 447498 D01, the 1-g and 10-g SAR test exclusion thresholds for 100 MHz to 6 GHz at test separation distances ≤ 50 mm are determined by:

$$[(\text{max. power of channel, including tune-up tolerance, mW})/(\text{min. test separation distance, mm})] \cdot [\sqrt{f(\text{GHz})}] \leq 3.0$$
 for 1-g SAR and ≤ 7.5 for 10-g extremity SAR
 - f(GHz) is the RF channel transmit frequency in GHz
 - Power and distance are rounded to the nearest mW and mm before calculation
 - The result is rounded to one decimal place for comparison
 - For < 50 mm distance, we just calculate mW of the exclusion threshold value (3.0) to do compare.
- Per KDB 447498 D01, at 100 MHz to 6 GHz and for test separation distances > 50 mm, the SAR test exclusion threshold is determined according to the following
 - [Threshold at 50 mm in step 1) + (test separation distance - 50 mm) · (f(MHz)/150)] mW, at 100 MHz to 1500

MHz

- b. [Threshold at 50 mm in step 1) + (test separation distance - 50 mm)·10] mW at > 1500 MHz and ≤ 6 GHz
6. Per KDB 248227 D01, choose the highest output power channel to test SAR and determine further SAR exclusion.8. For each frequency band, testing at higher data rates and higher order modulations is not required when the maximum average output power for each of these configurations is less than 1/4dB higher than those measured at the lowest data rate
7. Per KDB 248227 D01 SAR is not required for the following 2.4 GHz OFDM conditions.
 - a. When KDB Publication 447498 D01 SAR test exclusion applies to the OFDM configuration.
 - b. When the highest reported SAR for DSSS is adjusted by the ratio of OFDM to DSSS specified maximum output power and the adjusted SAR is ≤ 1.2 W/kg.
8. Per KDB 248227 D01 SAR is not required for the following U-NII-1 and U-NII-2A bands conditions.
 - a. When the same maximum output power is specified for both bands, begin SAR measurement in U-NII-2A band by applying the OFDM SAR requirements. If the highest reported SAR for a test configuration is ≤ 1.2 W/kg, SAR is not required for U-NII-1 band for that configuration (802.11 mode and exposure condition); otherwise, each band is tested independently for SAR.
 - b. When different maximum output power is specified for the bands, begin SAR measurement in the band with higher specified maximum output power. The highest reported SAR for the tested configuration is adjusted by the ratio of lower to higher specified maximum output power for the two bands. When the adjusted SAR is ≤ 1.2 W/kg, SAR is not required for the band with lower maximum output power in that test configuration; otherwise, each band is tested independently for SAR.

10 TEST RESULT

10.1 Bluetooth

Mode	Antenna Manufacturer	Antenna	Position	Dist. (mm)	Ch.	Freq. (MHz)	Power Drift (dB)	1g Meas SAR (W/kg)	Meas. Power (dBm)	Max. tune-up power (dBm)	Scaling Factor	Duty cycle (%)	Duty cycle Factor	1g Scaled SAR (W/kg)	Meas. No.
Body															
DH5	Luxshare	Aux (DC33001PV10)	Bottom Side	0	0	2402	-0.14	0.049	10.80	12.00	1.318	76.88	1.301	0.084	/
	Speed	Aux (DC33001PU10)	Bottom Side	0	0	2402	0.02	0.056	10.80	12.00	1.318	76.88	1.301	0.096	/
				0	39	2441	0.16	0.058	10.73	12.00	1.340	76.88	1.301	0.101	/
				0	78	2480	0.18	0.062	10.63	12.00	1.371	76.88	1.301	0.110	1#
	Amphenol	Aux (DC33001PX10)	Bottom Side	0	0	2402	0.18	0.051	10.80	12.00	1.318	76.88	1.301	0.087	/
	Luxshare	Aux (DC33001ML10)	Bottom Side	0	0	2402	0.07	0.042	10.80	12.00	1.318	76.88	1.301	0.072	/
	Speed	Aux (DC33001MK10)	Bottom Side	0	0	2402	0.02	0.046	10.80	12.00	1.318	76.88	1.301	0.079	/
Amphenol	Aux (DC33001MM10)	Bottom Side	0	0	2402	0.18	0.049	10.80	12.00	1.318	76.88	1.301	0.084	/	
Note: Refer to ANNEX C for the detailed test data for each test configuration.															

10.2WIFI 2.4GHZ

Mode	Antenna Manufacturer	Antenna	Position	Dist. (mm)	Ch.	Freq. (MHz)	Power Drift (dB)	1g Meas SAR (W/kg)	Meas. Power (dBm)	Max. tune-up power (dBm)	Scaling Factor	Duty cycle (%)	Duty cycle Factor	1g Scaled SAR (W/kg)	Meas. No.
Body															
802.11b	Luxshare	Main (DC33001PV00)	Bottom Side	0	6	2437	-0.08	0.516	18.64	19.00	1.086	99.47	1.005	0.564	/
	Speed	Main (DC33001PU00)	Bottom Side	0	6	2437	-0.13	0.628	18.64	19.00	1.086	99.47	1.005	0.686	/
	Amphenol	Main (DC33001PX00)	Bottom Side	0	6	2437	0.12	0.570	18.64	19.00	1.086	99.47	1.005	0.623	/
	Luxshare	Main (DC33001ML00)	Bottom Side	0	6	2437	0.03	0.674	18.64	19.00	1.086	99.47	1.005	0.736	/
	Speed	Main (DC33001MK00)	Bottom Side	0	6	2437	-0.15	0.639	18.64	19.00	1.086	99.47	1.005	0.698	/
	Amphenol	Main (DC33001MM00)	Bottom Side	0	6	2437	-0.04	0.706	18.64	19.00	1.086	99.47	1.005	0.771	/
				0	1	2412	0.07	0.685	18.57	19.00	1.104	99.47	1.005	0.760	/
				0	11	2462	0.16	0.772	18.52	19.00	1.117	99.47	1.005	0.867	2#
	Luxshare	Aux (DC33001PV10)	Bottom Side	0	6	2437	0.18	0.565	18.93	19.00	1.016	99.47	1.005	0.577	3#
				0	1	2412	0.17	0.480	18.77	19.00	1.054	99.47	1.005	0.509	/
				0	11	2462	0.04	0.479	18.57	19.00	1.104	99.47	1.005	0.532	/
	Speed	Aux (DC33001PU10)	Bottom Side	0	6	2437	0.10	0.518	18.93	19.00	1.016	99.47	1.005	0.529	/
	Amphenol	Aux (DC33001PX10)	Bottom Side	0	6	2437	0.04	0.545	18.93	19.00	1.016	99.47	1.005	0.557	/
	Luxshare	Aux (DC33001ML10)	Bottom Side	0	6	2437	-0.08	0.549	18.93	19.00	1.016	99.47	1.005	0.561	/
Speed	Aux (DC33001MK10)	Bottom Side	0	6	2437	-0.11	0.515	18.93	19.00	1.016	99.47	1.005	0.526	/	
Amphenol	Aux (DC33001MM10)	Bottom Side	0	6	2437	0.03	0.528	18.93	19.00	1.016	99.47	1.005	0.539	/	

Note: Refer to ANNEX C for the detailed test data for each test configuration.

10.3WIFI 5GHz

Fre. Band	Mode	Antenna Manufacturer	Antenna	Position	Dist. (mm)	Ch.	Freq. (MHz)	Power Drift (dB)	1g Meas SAR (W/kg)	Meas. Power (dBm)	Max. tune-up power (dBm)	Scaling Factor	Duty cycle (%)	Duty cycle Factor	1g Scaled SAR (W/kg)	Meas. No.
5.3G	802.11 a	Luxshare	Main (DC33001PV00)	Bottom Side	0	60	5300	0.07	0.571	16.99	17.00	1.002	97.62	1.024	0.586	/
		Speed	Main (DC33001PU00)	Bottom Side	0	60	5300	0.11	0.621	16.99	17.00	1.002	97.62	1.024	0.638	/
		Amphenol	Main (DC33001PX00)	Bottom Side	0	60	5300	0.18	0.637	16.99	17.00	1.002	97.62	1.024	0.654	/
		Luxshare	Main (DC33001ML00)	Bottom Side	0	60	5300	0.05	0.913	16.99	17.00	1.002	97.62	1.024	0.937	/
					0	52	5260	0.05	0.931	16.84	17.00	1.038	97.62	1.024	0.989	4#
					0	64	5320	-0.07	0.673	15.55	17.00	1.396	97.62	1.024	0.963	/
		Speed	Main (DC33001MK00)	Bottom Side	0	60	5300	0.00	0.552	16.99	17.00	1.002	97.62	1.024	0.567	/
		Amphenol	Main (DC33001MM00)	Bottom Side	0	60	5300	-0.04	0.800	16.99	17.00	1.002	97.62	1.024	0.821	/
					0	52	5260	-0.14	0.787	16.84	17.00	1.038	97.62	1.024	0.836	/
					0	64	5320	0.16	0.596	15.55	17.00	1.396	97.62	1.024	0.853	/
		Luxshare	Aux (DC33001PV10)	Bottom Side	0	60	5300	0.17	0.659	16.95	17.00	1.012	97.62	1.024	0.683	/
		Speed	Aux (DC33001PU10)	Bottom Side	0	60	5300	-0.04	0.853	16.95	17.00	1.012	97.62	1.024	0.884	/
					0	52	5260	0.17	0.787	16.51	17.00	1.119	97.62	1.024	0.902	/
					0	64	5320	-0.19	0.717	16.03	17.00	1.250	97.62	1.024	0.918	/
		Amphenol	Aux (DC33001PX10)	Bottom Side	0	60	5300	-0.07	0.813	16.95	17.00	1.012	97.62	1.024	0.842	/
					0	52	5260	0.17	0.729	16.51	17.00	1.119	97.62	1.024	0.836	/
					0	64	5320	-0.02	0.688	16.03	17.00	1.250	97.62	1.024	0.881	/
		Luxshare	Aux (DC33001ML10)	Bottom Side	0	60	5300	0.14	0.880	16.95	17.00	1.012	97.62	1.024	0.912	/
					0	52	5260	0.07	0.693	16.51	17.00	1.119	97.62	1.024	0.795	/
					0	64	5320	-0.10	0.714	16.03	17.00	1.250	97.62	1.024	0.914	/
		Speed	Aux (DC33001MK10)	Bottom Side	0	60	5300	0.10	0.720	16.95	17.00	1.012	97.62	1.024	0.746	/
		Amphenol	Aux (DC33001MM10)	Bottom Side	0	60	5300	-0.07	0.920	16.95	17.00	1.012	97.62	1.024	0.953	5#
					0	52	5260	0.14	0.814	16.51	17.00	1.119	97.62	1.024	0.933	/
					0	64	5320	0.02	0.732	16.03	17.00	1.250	97.62	1.024	0.938	/
5.6G	802.11 a	Luxshare	Main (DC33001PV00)	Bottom Side	0	100	5500	-0.18	0.716	15.73	16.00	1.064	97.62	1.024	0.781	/
		Speed	Main (DC33001PU00)	Bottom Side	0	100	5500	0.07	0.852	15.73	16.00	1.064	97.62	1.024	0.929	/
					0	116	5580	0.13	0.925	15.67	16.00	1.079	97.62	1.024	1.022	/
					0	140	5700	-0.15	0.578	15.63	16.00	1.089	97.62	1.024	0.645	/
					0	144	5720	0.02	0.514	15.81	16.00	1.045	97.62	1.024	0.550	/
		Amphenol	Main (DC33001PX00)	Bottom Side	0	100	5500	0.15	0.972	15.73	16.00	1.064	97.62	1.024	1.060	/
					0	116	5580	0.15	0.931	15.67	16.00	1.079	97.62	1.024	1.029	/
					0	140	5700	0.03	0.651	15.63	16.00	1.089	97.62	1.024	0.726	/

		Luxshare	Main (DC33001ML00)	Bottom Side	0	144	5720	0.11	0.615	15.81	16.00	1.045	97.62	1.024	0.658	/
					0	100	5500	0.19	1.020	15.73	16.00	1.064	97.62	1.024	1.112	/
					0	116	5580	-0.04	0.976	15.67	16.00	1.079	97.62	1.024	1.079	/
					0	140	5700	-0.07	1.050	15.63	16.00	1.089	97.62	1.024	1.171	6#
					0	144	5720	0.02	0.981	15.81	16.00	1.045	97.62	1.024	1.050	/
		Speed	Main (DC33001MK00)	Bottom Side	0	100	5500	-0.10	0.686	15.73	16.00	1.064	97.62	1.024	0.748	/
					0	100	5500	-0.10	0.686	15.73	16.00	1.064	97.62	1.024	0.748	/
		Amphenol	Main (DC33001MM00)	Bottom Side	0	100	5500	0.16	0.982	15.73	16.00	1.064	97.62	1.024	1.070	/
					0	116	5580	0.12	1.020	15.67	16.00	1.079	97.62	1.024	1.127	/
					0	140	5700	0.05	1.040	15.63	16.00	1.089	97.62	1.024	1.160	/
					0	144	5720	-0.17	0.988	15.81	16.00	1.045	97.62	1.024	1.057	/
		Luxshare	Aux (DC33001PV10)	Bottom Side	0	100	5500	0.14	0.683	15.97	16.00	1.007	97.62	1.024	0.705	/
		Speed	Aux (DC33001PU10)	Bottom Side	0	100	5500	-0.03	0.668	15.97	16.00	1.007	97.62	1.024	0.689	/
		Amphenol	Aux (DC33001PX10)	Bottom Side	0	100	5500	-0.15	0.672	15.97	16.00	1.007	97.62	1.024	0.693	/
Luxshare	Aux (DC33001ML10)	Bottom Side	0	100	5500	0.02	0.587	15.97	16.00	1.007	97.62	1.024	0.605	/		
Speed	Aux (DC33001MK10)	Bottom Side	0	100	5500	0.10	0.653	15.97	16.00	1.007	97.62	1.024	0.674	/		
Amphenol	Aux (DC33001MM10)	Bottom Side	0	100	5500	-0.01	0.713	15.97	16.00	1.007	97.62	1.024	0.735	/		
			0	116	5580	0.16	0.707	15.68	16.00	1.076	97.62	1.024	0.780	/		
			0	140	5700	-0.10	0.724	15.69	16.00	1.074	97.62	1.024	0.797	7#		
			0	144	5720	0.11	0.611	15.44	16.00	1.138	97.62	1.024	0.712	/		
5.8G	802.11 a	Luxshare	Main (DC33001PV00)	Bottom Side	0	165	5825	0.03	0.864	16.97	17.00	1.007	97.62	1.024	0.891	/
					0	157	5785	0.06	0.793	16.95	17.00	1.012	97.62	1.024	0.822	/
					0	149	5745	0.03	0.780	16.86	17.00	1.033	97.62	1.024	0.825	/
		Speed	Main (DC33001PU00)	Bottom Side	0	165	5825	0.07	0.814	16.97	17.00	1.007	97.62	1.024	0.840	/
					0	157	5785	0.13	0.675	16.95	17.00	1.012	97.62	1.024	0.699	/
					0	149	5745	0.13	0.691	16.86	17.00	1.033	97.62	1.024	0.731	/
		Amphenol	Main (DC33001PX00)	Bottom Side	0	165	5825	0.19	1.010	16.97	17.00	1.007	97.62	1.024	1.042	/
					0	157	5785	0.11	0.967	16.95	17.00	1.012	97.62	1.024	1.002	/
					0	149	5745	0.13	0.911	16.86	17.00	1.033	97.62	1.024	0.964	/
		Luxshare	Main (DC33001ML00)	Bottom Side	0	165	5825	-0.06	0.992	16.97	17.00	1.007	97.62	1.024	1.023	/
					0	157	5785	0.16	0.830	16.95	17.00	1.012	97.62	1.024	0.860	/
					0	149	5745	-0.10	0.856	16.86	17.00	1.033	97.62	1.024	0.906	/
		Speed	Main (DC33001MK00)	Bottom Side	0	165	5825	-0.16	0.735	16.97	17.00	1.007	97.62	1.024	0.758	/
		Amphenol	Main (DC33001MM00)	Bottom Side	0	165	5825	0.11	1.130	16.97	17.00	1.007	97.62	1.024	1.166	8#
					0	157	5785	-0.10	0.974	16.95	17.00	1.012	97.62	1.024	1.009	/
					0	149	5745	-0.10	1.010	16.86	17.00	1.033	97.62	1.024	1.069	/
		Luxshare	Aux (DC33001PV10)	Bottom Side	0	149	5745	-0.12	0.974	16.93	17.00	1.016	97.62	1.024	1.014	/
					0	157	5785	0.20	1.120	16.91	17.00	1.021	97.62	1.024	1.171	9#
					0	165	5825	-0.19	1.030	16.55	17.00	1.109	97.62	1.024	1.170	/

	Speed	Aux (DC33001PU10)	Bottom Side	0	149	5745	-0.18	0.956	16.93	17.00	1.016	97.62	1.024	0.995	/	
				0	157	5785	-0.13	0.926	16.91	17.00	1.021	97.62	1.024	0.968	/	
				0	165	5825	-0.09	0.958	16.55	17.00	1.109	97.62	1.024	1.088	/	
		Amphenol	Aux (DC33001PX10)	Bottom Side	0	149	5745	-0.06	0.776	16.93	17.00	1.016	97.62	1.024	0.808	/
					0	157	5785	0.19	0.855	16.91	17.00	1.021	97.62	1.024	0.894	/
					0	165	5825	-0.14	0.912	16.55	17.00	1.109	97.62	1.024	1.036	/
		Luxshare	Aux (DC33001ML10)	Bottom Side	0	149	5745	-0.13	0.814	16.93	17.00	1.016	97.62	1.024	0.847	/
					0	157	5785	0.02	0.876	16.91	17.00	1.021	97.62	1.024	0.916	/
					0	165	5825	0.07	0.925	16.55	17.00	1.109	97.62	1.024	1.051	/
	Speed	Aux (DC33001MK10)	Bottom Side	0	149	5745	-0.02	0.879	16.93	17.00	1.016	97.62	1.024	0.915	/	
				0	157	5785	-0.02	0.929	16.91	17.00	1.021	97.62	1.024	0.972	/	
				0	165	5825	0.06	0.902	16.55	17.00	1.109	97.62	1.024	1.025	/	
	Amphenol	Aux (DC33001MM10)	Bottom Side	0	149	5745	0.03	0.946	16.93	17.00	1.016	97.62	1.024	0.985	/	
				0	157	5785	0.07	0.866	16.91	17.00	1.021	97.62	1.024	0.906	/	
				0	165	5745	0.03	0.946	16.55	17.00	1.109	97.62	1.024	1.075	/	

Note: Refer to ANNEX C for the detailed test data for each test configuration.

11 SAR Measurement Variability

According to KDB 865664 D01, SAR measurement variability was assessed for each frequency band, which is determined by the SAR probe calibration point and tissue-equivalent medium used for the device measurements. When both head and body tissue-equivalent media are required for SAR measurements in a frequency band, the variability measurement procedures should be applied to the tissue medium with the highest measured SAR, using the highest measured SAR configuration for that tissue-equivalent medium. Alternatively, if the highest measured SAR for both head and body tissue-equivalent media are ≤ 1.45 W/kg and the ratio of these highest SAR values, i.e., largest divided by smallest value, is ≤ 1.10 , the highest SAR configuration for either head or body tissue-equivalent medium may be used to perform the repeated measurement. These additional measurements are repeated after the completion of all measurements requiring the same head or body tissue-equivalent medium in a frequency band. The test device should be returned to ambient conditions (normal room temperature) with the battery fully charged before it is re-mounted on the device holder for the repeated measurement(s) to minimize any unexpected variations in the repeated results.

SAR repeated measurement procedure:

1. When the highest measured SAR is < 0.80 W/kg, repeated measurement is not required.
2. When the highest measured SAR is ≥ 0.80 W/kg, repeat that measurement once.
3. If the ratio of largest to smallest SAR for the original and first repeated measurements is > 1.20 , or when the original or repeated measurement is ≥ 1.45 W/kg, perform a second repeated measurement.
4. If the ratio of largest to smallest SAR for the original, first and second repeated measurements is > 1.20 , and the original, first or second repeated measurement is ≥ 1.5 W/kg, perform a third repeated measurement.

Frequency Band (MHz)	Wireless Band	Antenna Manufacturer	Antenna	RF Exposure Conditions	Test Position	Highest Measured SAR (W/kg)	Repeated SAR (Yes/No)	Highest Measured SAR (W/kg)	Largest to Smallest SAR Ratio
5260	5.3G	Luxshare	Main(DC33001ML00)	Body	Bottom Side	0.931	Yes	0.923	1.01
5320	5.3G	Amphenol	Aux.(DC33001MM10)	Body	Bottom Side	0.920	Yes	0.904	1.02
5700	5.6G	Luxshare	Main(DC33001ML00)	Body	Bottom Side	1.050	Yes	1.03	1.02
5825	5.8G	Amphenol	Main(DC33001MM00)	Body	Bottom Side	1.130	Yes	1.11	1.02
5785	5.8G	Luxshare	Aux.(DC33001PV10)	Body	Bottom Side	1.120	Yes	1.10	1.02

Note: The ratio of largest to smallest SAR for the original and first repeated measurements is < 1.20 , the second repeated measurement is not required.

12 SIMULTANEOUS TRANSMISSION

Simultaneous transmission SAR test exclusion is determined for each operating configuration and exposure condition according to the reported standalone SAR of each applicable simultaneous transmitting antenna. When the sum of SAR 1g of all simultaneously transmitting antennas in an operating mode and exposure condition combination is within the SAR limit (SAR 1g 1.6 W/kg), the simultaneous transmission SAR is not required. When the sum of SAR 1g is greater than the SAR limit (SAR 1g 1.6 W/kg), SAR test exclusion is determined by the SAR to Peak Location Ratio (SPLSR).

According KDB 447498 D01v06, simultaneous transmission:

- a) $SPLSR = (SAR1 + SAR2)^{1.5} / R_i$ (min. separation distance, mm), and the peak separation distance is determined from the square root of $[(x1-x2)^2 + (y1-y2)^2 + (z1-z2)^2]$, where (x1, y1, z1) and (x2, y2, z2) are the coordinates of the extrapolated peak SAR locations in the zoom scan.
 SAR1 is the highest reported or estimated SAR for the first of a pair of simultaneous transmitting antennas, in a specific test operating mode and exposure condition.
 SAR2 is the highest reported or estimated SAR for the second of a pair of simultaneous transmitting antennas, in a specific test operating mode and exposure condition as the first.
- b) If $SPLSR \leq 0.04$, simultaneously transmission SAR measurement is not necessary.
- c) Simultaneously transmission SAR measurement, and the reported multi-band SAR < 1.6W/kg.

12.1 Simultaneous Transmission Mode Considerations

NO.	Mode	Body
1	2.4 G WLAN (Main Antenna)	+ 2.4 G WLAN (Auxiliary Antenna)
2	2.4 G WLAN (Main Antenna)	+ Bluetooth (Auxiliary Antenna)
3	5 G WLAN (Main Antenna)	+ 5 G WLAN (Auxiliary Antenna)
4	5 G WLAN (Main Antenna)	+ Bluetooth (Auxiliary Antenna)
5	5G WLAN (Auxiliary Antenna)	+Bluetooth (Auxiliary Antenna)
6	5 G WLAN (Main Antenna)	+ 5 G WLAN (Auxiliary Antenna) + Bluetooth (Auxiliary Antenna)

Note:

- The WLAN 2.4G and WLAN 5G cannot transmit simultaneously.

12.2 Sum SAR of Simultaneous Transmission

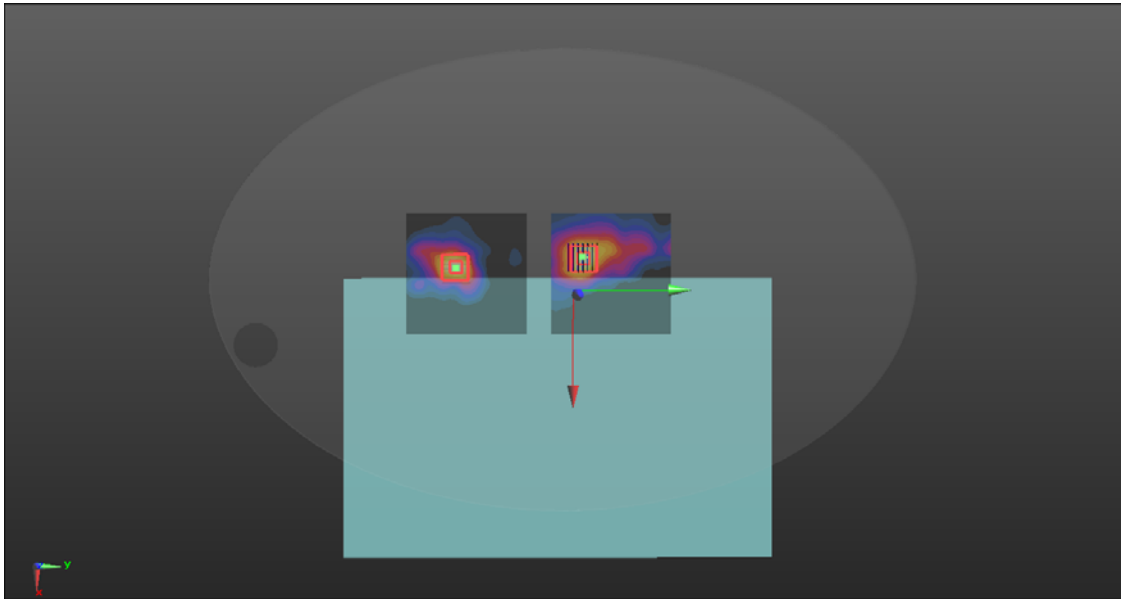
12.2.1 Highest Bluetooth and WLAN Sum Body SAR of Simultaneous Transmission

Test Mode	Mode	Max. 1g SAR (W/kg)	1g Sum SAR (W/kg)	SPLSR (Yes/No)	SPLSR Num.
Body (Separation 0 mm)					
2.4 G WLAN (Main Antenna) + 2.4 G WLAN (Auxiliary Antenna)	2.4 G WLAN (Main Antenna)	0.867	1.428	No	/
	2.4 G WLAN (Auxiliary Antenna)	0.561			
2.4 G WLAN (Main Antenna) + Bluetooth (Auxiliary Antenna)	2.4 G WLAN (Main Antenna)	0.867	0.951	No	/
	Bluetooth (Auxiliary Antenna)	0.084			
5 G WLAN (Main Antenna) + Bluetooth (Auxiliary Antenna)	5 G WLAN (Main Antenna)	1.171	1.255	No	/
	Bluetooth (Auxiliary Antenna)	0.084			
5 G WLAN (Auxiliary Antenna) + Bluetooth (Auxiliary Antenna)	5 G WLAN (Auxiliary Antenna)	1.171	1.281	No	/
	Bluetooth (Auxiliary Antenna)	0.110			
5.3 G WLAN (Main Antenna) + 5.3 G WLAN (Auxiliary Antenna) + Bluetooth (Auxiliary Antenna)	5.3 G WLAN (Main Antenna)	0.989	2.026	Yes	1#
	5.3 G WLAN (Auxiliary Antenna)	0.953			
	Bluetooth (Auxiliary Antenna)	0.084			
5.6 G WLAN (Main Antenna) + 5.6 G WLAN (Auxiliary Antenna) + Bluetooth (Auxiliary Antenna)	5.6 G WLAN (Main Antenna)	1.171	2.052	Yes	2#
	5.6 G WLAN (Auxiliary Antenna)	0.797			
	Bluetooth (Auxiliary Antenna)	0.084			
5.8 G WLAN (Main Antenna) + 5.8 G WLAN (Auxiliary Antenna) + Bluetooth (Auxiliary Antenna)	5.8 G WLAN (Main Antenna)	1.166	2.325	Yes	3#
	5.8 G WLAN (Auxiliary Antenna)	1.075			
	Bluetooth (Auxiliary Antenna)	0.084			

Note: The antenna positions of EUT with different shell materials are the same, so only the worst simultaneous transmission combinations of same shell materials was shown in this table.

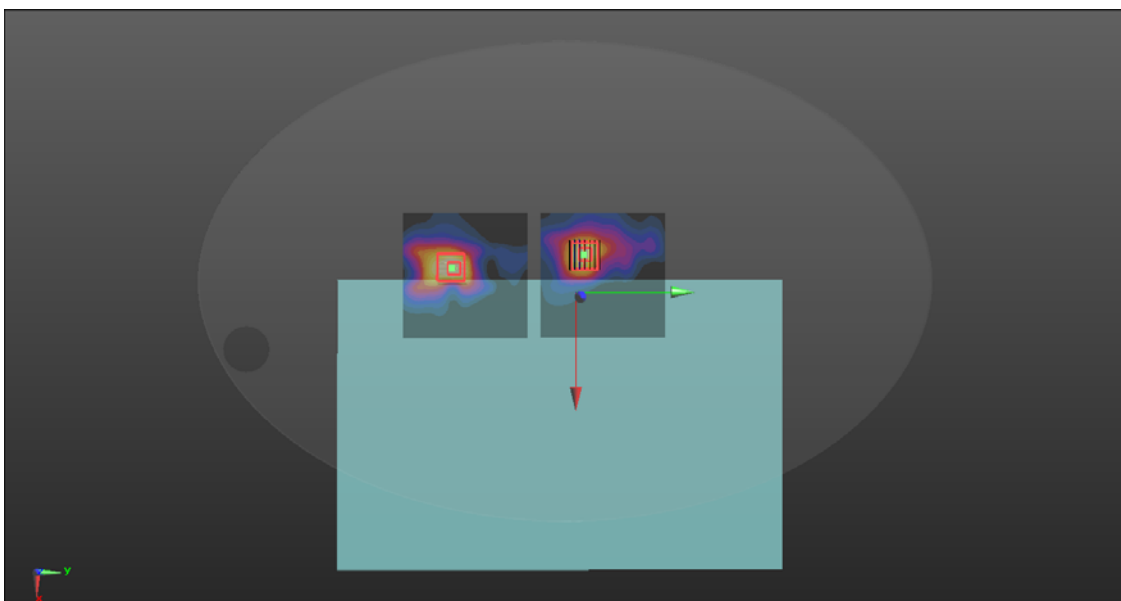
SPLSR Analysis 1#

Plot No	Antenna	Position	Reported 1g Max. SAR (W/kg)	Coordinates (m)			1g Sum SAR (W/kg)	3D Distance (mm)	SPLSR	Simultaneous SAR Test (Yes/No)
				X	Y	Z				
1	Main	Bottom	0.989	-0.01	-0.089	-0.178	120.7	2.03	0.02	No
2	Aux+Bluetooth	Edge	1.037	-0.031	0.028	-0.157				



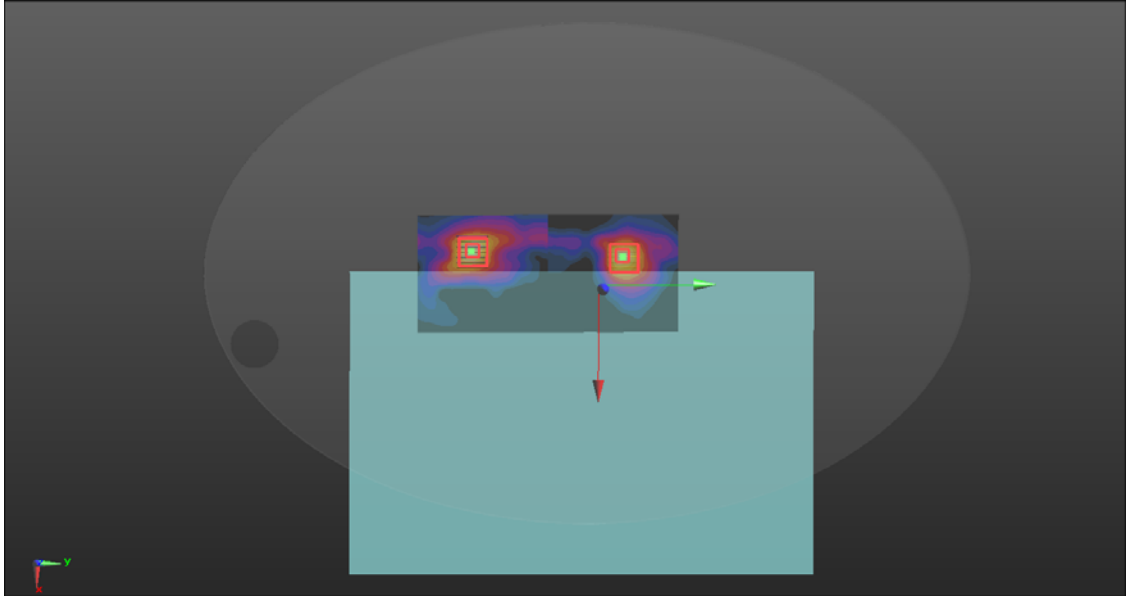
SPLSR Analysis 2#

Plot No	Antenna	Position	Reported 1g Max. SAR (W/kg)	Coordinates (m)			1g Sum SAR (W/kg)	3D Distance (mm)	SPLSR	Simultaneous SAR Test (Yes/No)
				X	Y	Z				
1	Main	Bottom	1.171	-0.011	-0.087	-0.177	102.6	2.05	0.03	No
2	Aux+Bluetooth	Edge	0.881	-0.022	0.015	-0.179				



SPLSR Analysis 3#

Plot No	Antenna	Position	Reported 1g Max. SAR (W/kg)	Coordinates (m)			1g Sum SAR (W/kg)	3D Distance (mm)	SPLSR	Simultaneous SAR Test (Yes/No)
				X	Y	Z				
1	Main	Bottom	1.166	-0.034	-0.08	-0.178	87.7	2.33	0.04	No
2	Aux+Bluetooth	Edge	1.159	-0.023	0.00701	-0.178				



13 TEST EQUIPMENTS LIST

Description	Manufacturer	Model	Serial No./Version	Cal. Date	Cal. Due
PC	Dell	N/A	N/A	N/A	N/A
Test Software	Speag	DASY5	52.8.8.1222	N/A	N/A
2450MHz Validation Dipole	Speag	D2450V2	SN: 952	2021/05/19	2024/05/18
5GHz Validation Dipole	Speag	D5GHzV2	SN: 1200	2021/05/18	2024/05/17
E-Field Probe	Speag	EX3DV4	SN: 7510	2020/11/30	2021/11/29
Data Acquisition Electronics	Speag	DAE4	SN: 1454	2020/11/06	2021/11/05
Signal Generator	R&S	SMB100A	182396	2020/12/21	2021/12/20
Power Meter	R&S	NRVD-B2	7250BJ-0112/2011	2020/09/25	2021/09/24
Power Sensor	R&S	NRV-Z4	100381	2020/09/25	2021/09/24
Network Analyzer	Agilent	E5071B	MY42404001	2021/04/01	2022/03/31
Thermometer	Elitech	RC-4HC	EF720B004820	2020/12/24	2021/12/23
Power Amplifier	SATIMO	6552B	22374	N/A	N/A
Dielectric Probe Kit	SATIMO	SCLMP	SN 25/13 OCPG56	N/A	N/A
Phantom1	Speag	SAM	SN: 1859	N/A	N/A
Phantom2	Speag	ELI4	SN: 1012	N/A	N/A
Attenuator	COM-MW	ZA-S1-31	1305003187	N/A	N/A
Directional coupler	AA-MCS	AAMCS-UDC	000272	N/A	N/A

Note: For dipole antennas, BALUN has adopted 3 years as calibration intervals, and on annual basis, every measurement dipole has been evaluated and is in compliance with the following criteria:

1. There is no physical damage on the dipole;
2. System validation with specific dipole is within 10% of calibrated value;
3. Return-loss in within 20% of calibrated measurement.
4. Impedance (real or imaginary parts) in within 5 Ohms of calibrated measurement.

ANNEX A SIMULATING LIQUID VERIFICATION RESULT

The dielectric parameters of the liquids were verified prior to the SAR evaluation using an SCLMP Dielectric Probe Kit.

Head Liquid

Date	Liquid Type	Fre. (MHz)	Temp. (°C)	Meas. Conductivity (σ) (S/m)	Meas. Permittivity (ϵ)	Target Conductivity (σ) (S/m)	Target Permittivity (ϵ)	Conductivity Tolerance (%)	Permittivity Tolerance (%)
2021.06.15	Head	2450	21.1	1.78	39.44	1.80	39.20	-1.11	0.61
2021.06.16	Head	5250	21.1	4.67	36.92	4.71	35.93	-0.85	2.76
2021.06.17	Head	5600	21.4	5.07	35.85	5.07	35.53	0.00	0.90
2021.06.18	Head	5750	21.4	5.37	35.40	5.22	35.36	2.87	0.11

Note: The tolerance limit of Conductivity and Permittivity is $\pm 5\%$.

ANNEX B SYSTEM CHECK RESULT

Comparing to the original SAR value provided by SPEAG, the validation data should be within its specification of 10 % (for 1 g).

Head liquid 1g

Date	Liquid Type	Freq. (MHz)	Power (mW)	Measured SAR (W/kg)	Normalized SAR (W/kg)	Dipole SAR (W/kg)	Tolerance (%)
2021.06.15	Head	2450	100	5.140	51.40	53.00	-3.02
2021.06.16	Head	5250	100	7.420	74.20	77.80	-4.63
2021.06.17	Head	5600	100	7.960	79.60	81.20	-1.97
2021.06.18	Head	5750	100	7.510	75.10	77.20	-2.72

Note: The tolerance limit of System validation $\pm 10\%$.

System Performance Check Data (2450MHz)

Date: 2021.06.15

Communication System Band: D2450 (2450.0 MHz); Frequency: 2450 MHz; Duty Cycle: 1:1

Medium parameters used: $f = 2450$ MHz; $\sigma = 1.779$ S/m; $\epsilon_r = 39.438$; $\rho = 1000$ kg/m³

Phantom section: Flat Section

Ambient Temperature: 22.3 Liquid Temperature: 21.1

DASY5 Configuration:

- Probe: EX3DV4 - SN7510; ConvF(7.54, 7.54, 7.54); Calibrated: 2020.11.30;
- Sensor-Surface: 4mm (Mechanical Surface Detection)
- Electronics: DAE4 Sn1454; Calibrated: 2020.11.06
- Phantom: ELI v4.0; Type: QDOVA001BB; Serial: TP:1012
- Measurement SW: DASY52, Version 52.8 (8); SEMCAD X Version 14.6.10 (7331)

CW2450/Area Scan (101x101x1): Interpolated grid: dx=1.000 mm, dy=1.000 mm

Maximum value of SAR (interpolated) = 5.92 W/kg

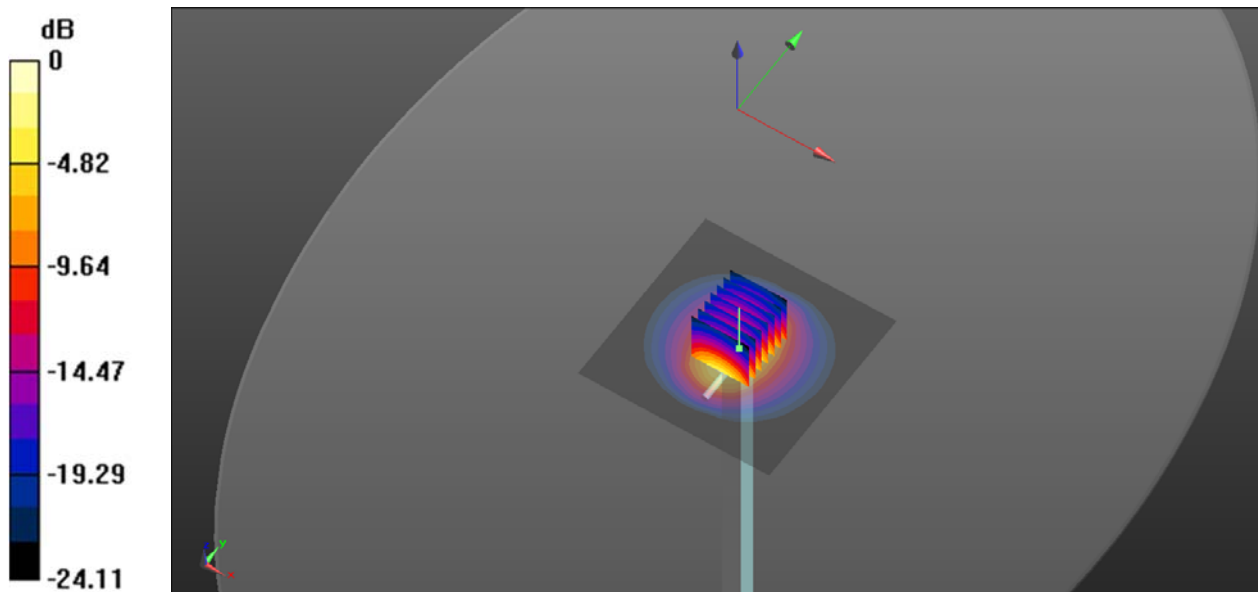
CW2450/Zoom Scan (7x7x7)/Cube 0: Measurement grid: dx=5mm, dy=5mm, dz=5mm

Reference Value = 54.69 V/m; Power Drift = -0.01 dB

Peak SAR (extrapolated) = 11.4 W/kg

SAR(1 g) = 5.14 W/kg; SAR(10 g) = 2.38 W/kg

Maximum value of SAR (measured) = 6.23 W/kg



0 dB = 6.23 W/kg

System Performance Check Data (5250MHz)

Date: 2021.06.16

Communication System Band: D5GHz (5000.0 - 6000.0 MHz); Frequency: 5250 MHz; Duty Cycle: 1:1

Medium parameters used: $f = 5250$ MHz; $\sigma = 4.672$ S/m; $\epsilon_r = 36.918$; $\rho = 1000$ kg/m³

Phantom section: Flat Section

Ambient Temperature: 22.4 Liquid Temperature: 21.1

DASY5 Configuration:

- Probe: EX3DV4 - SN7510; ConvF(5.46, 5.46, 5.46); Calibrated: 2020.11.30;
- Sensor-Surface: 2mm (Mechanical Surface Detection)
- Electronics: DAE4 Sn1454; Calibrated: 2020.11.06
- Phantom: ELI v4.0; Type: QDOVA001BB; Serial: TP:1012
- Measurement SW: DASY52, Version 52.8 (8); SEMCAD X Version 14.6.10 (7331)

CW5250/Area Scan (101x101x1): Interpolated grid: dx=1.000 mm, dy=1.000 mm

Maximum value of SAR (interpolated) = 8.62 W/kg

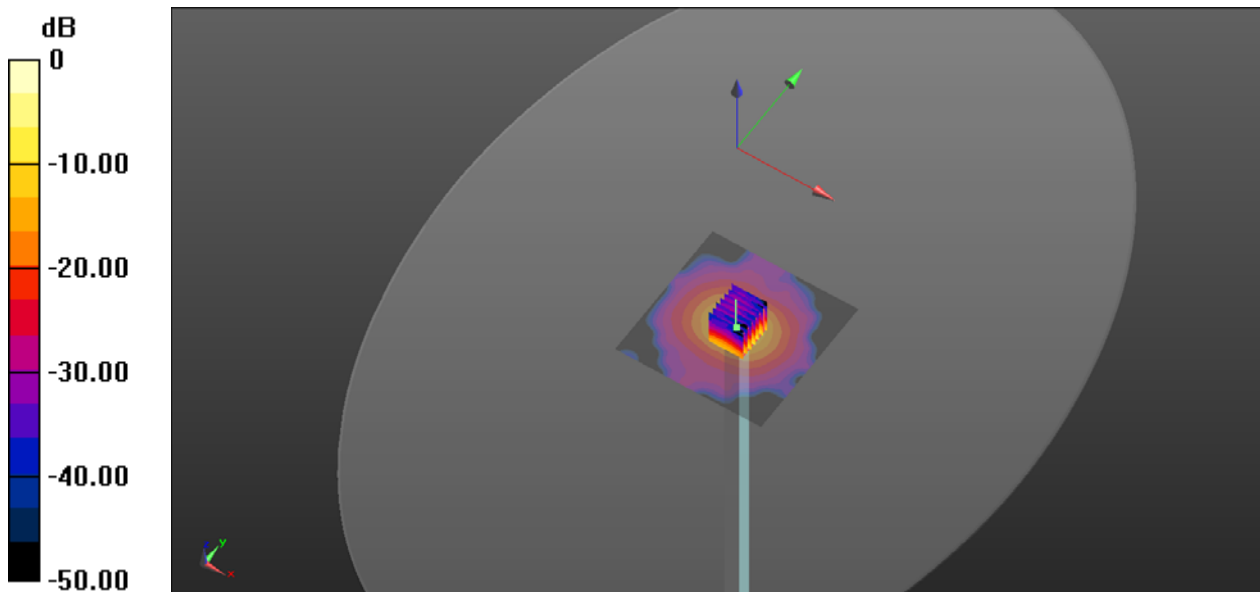
CW5250/Zoom Scan (7x7x21)/Cube 0: Measurement grid: dx=4mm, dy=4mm, dz=1.4mm

Reference Value = 53.17 V/m; Power Drift = 0.08 dB

Peak SAR (extrapolated) = 32.3 W/kg

SAR(1 g) = 7.42 W/kg; SAR(10 g) = 2.15 W/kg

Maximum value of SAR (measured) = 20.5 W/kg



0 dB = 20.5 W/kg

System Performance Check Data (5600MHz)

Date: 2021.06.17

Communication System Band: D5GHz (5000.0 - 6000.0 MHz); Frequency: 5600 MHz; Duty Cycle: 1:1

Medium parameters used: $f = 5600$ MHz; $\sigma = 5.069$ S/m; $\epsilon_r = 35.845$; $\rho = 1000$ kg/m³

Phantom section: Flat Section

Ambient Temperature: 22.7 Liquid Temperature: 21.4

DASY5 Configuration:

- Probe: EX3DV4 - SN7510; ConvF(4.89, 4.89, 4.89); Calibrated: 2020.11.30;
- Sensor-Surface: 2mm (Mechanical Surface Detection)
- Electronics: DAE4 Sn1454; Calibrated: 2020.11.06
- Phantom: ELI v4.0; Type: QDOVA001BB; Serial: TP:1012
- Measurement SW: DASY52, Version 52.8 (8); SEMCAD X Version 14.6.10 (7331)

CW 5600 100mW /Area Scan (81x81x1): Interpolated grid: dx=1.000 mm, dy=1.000 mm

Maximum value of SAR (interpolated) = 9.13 W/kg

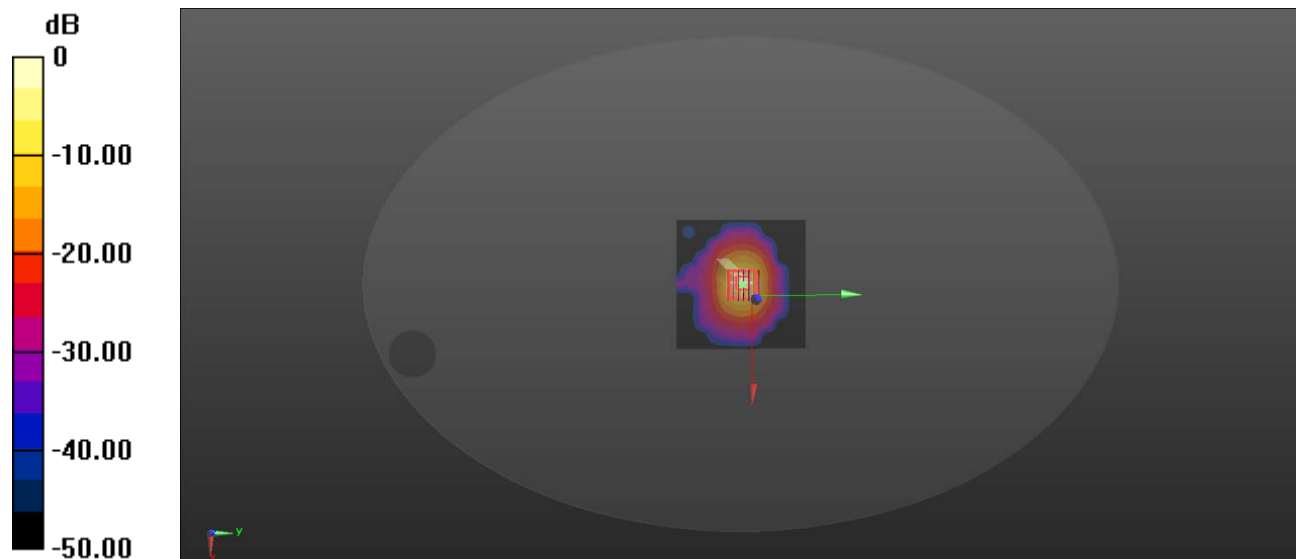
CW 5600 100mW /Zoom Scan (7x7x15)/Cube 0: Measurement grid: dx=4mm, dy=4mm, dz=2mm

Reference Value = 22.84 V/m; Power Drift = 0.12 dB

Peak SAR (extrapolated) = 38.21 W/kg

SAR(1 g) = 7.96 W/kg; SAR(10 g) = 2.42 W/kg

Maximum value of SAR (measured) = 41.1 W/kg



0 dB = 41.1 W/kg

System Performance Check Data (5750MHz)

Date: 2021.06.18

Communication System Band: D5GHz (5000.0 - 6000.0 MHz); Frequency: 5750 MHz; Duty Cycle: 1:1

Medium parameters used: $f = 5750$ MHz; $\sigma = 5.373$ S/m; $\epsilon_r = 35.402$; $\rho = 1000$ kg/m³

Phantom section: Flat Section

Ambient Temperature: 22.6 Liquid Temperature: 21.4

DASY5 Configuration:

- Probe: EX3DV4 - SN7510; ConvF(4.96, 4.96, 4.96); Calibrated: 2020.11.30;
- Sensor-Surface: 2mm (Mechanical Surface Detection)
- Electronics: DAE4 Sn1454; Calibrated: 2020.11.06
- Phantom: ELI v4.0; Type: QDOVA001BB; Serial: TP:1012
- Measurement SW: DASY52, Version 52.8 (8); SEMCAD X Version 14.6.10 (7331)

CW5750/Area Scan (101x101x1): Interpolated grid: dx=1.000 mm, dy=1.000 mm

Maximum value of SAR (interpolated) = 8.39 W/kg

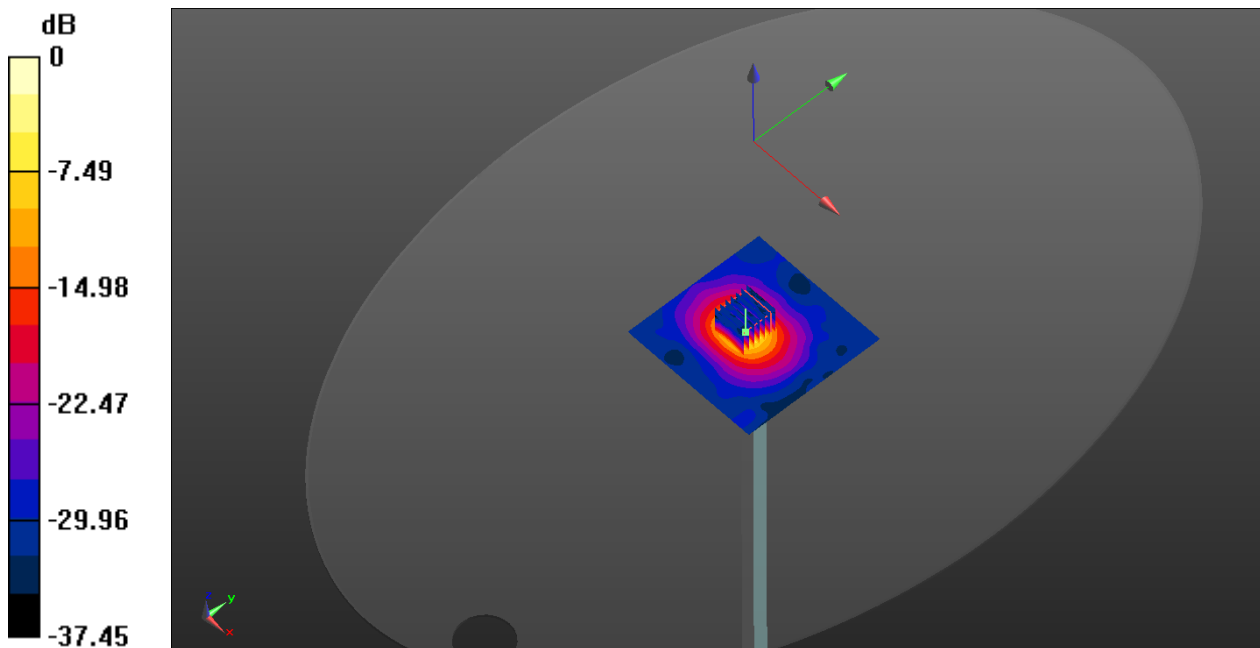
CW5750/Zoom Scan (7x7x13)/Cube 0: Measurement grid: dx=4mm, dy=4mm, dz=2mm

Reference Value = 45.37 V/m; Power Drift = -0.03 dB

Peak SAR (extrapolated) = 32.0 W/kg

SAR(1 g) = 7.51 W/kg; SAR(10 g) = 2.08 W/kg

Maximum value of SAR (measured) = 19.8 W/kg



0 dB = 19.8 W/kg

ANNEX C TEST DATA

MEAS.1 Body Plane with Bottom Side 0mm on High Channel in Bluetooth Mode with Antenna Auxiliary

Date: 2021.06.15

Communication System Band: BT; Frequency: 2480 MHz; Duty Cycle: 1:1.301

Medium parameters used: $f = 2480$ MHz; $\sigma = 1.819$ S/m; $\epsilon_r = 39.171$; $\rho = 1000$ kg/m³

Phantom section: Flat Section

Ambient Temperature: 22.3 Liquid Temperature: 21.1

DASY5 Configuration:

- Probe: EX3DV4 - SN7510; ConvF(7.54, 7.54, 7.54); Calibrated: 2020.11.30;
- Sensor-Surface: 4mm (Mechanical Surface Detection)
- Electronics: DAE4 Sn1454; Calibrated: 2020.11.06
- Phantom: ELI v4.0; Type: QDOVA001BB; Serial: TP:1012
- Measurement SW: DASY52, Version 52.8 (8); SEMCAD X Version 14.6.10 (7331)

Ch78/Area Scan (91x91x1): Interpolated grid: dx=1.200 mm, dy=1.200 mm

Maximum value of SAR (interpolated) = 0.0788 W/kg

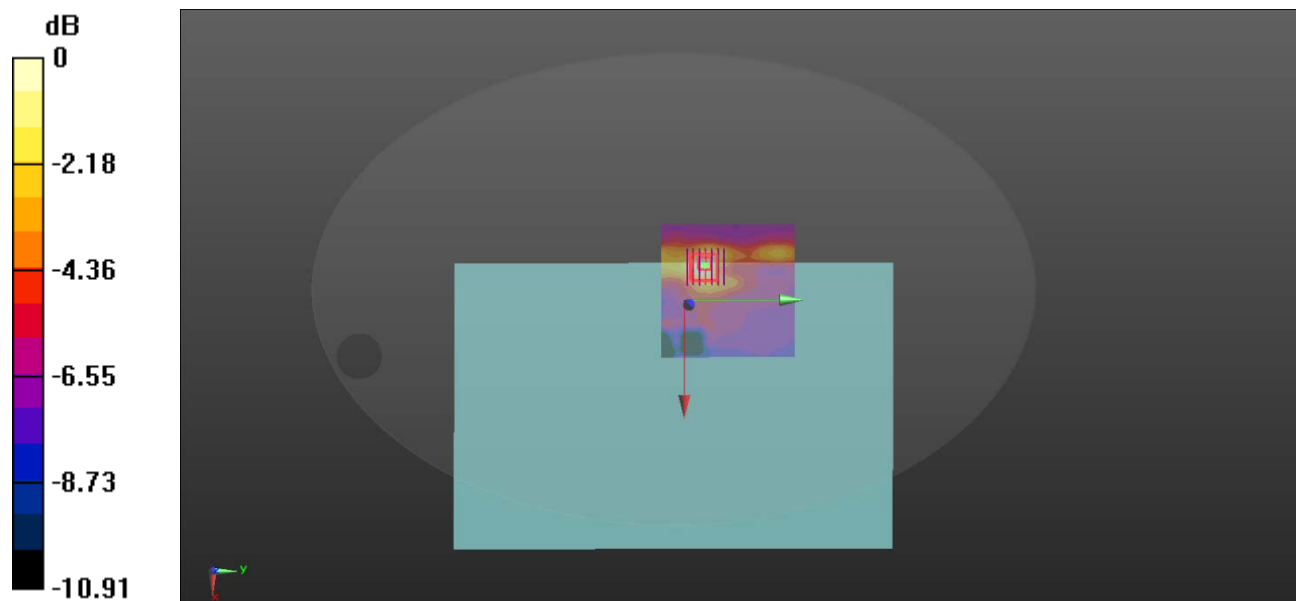
Ch78/Zoom Scan (7x7x7)/Cube 0: Measurement grid: dx=5mm, dy=5mm, dz=5mm

Reference Value = 2.908 V/m; Power Drift = 0.18 dB

Peak SAR (extrapolated) = 0.228 W/kg

SAR(1 g) = 0.062 W/kg; SAR(10 g) = 0.030 W/kg

Maximum value of SAR (measured) = 0.0621 W/kg



0 dB = 0.0621 W/kg

MEAS.2 Body Plane with Bottom Side 0mm on 11 Channel in IEEE802.11b Mode with Antenna Main

Date: 2021.06.15

Communication System Band: WLAN(b); Frequency: 2462 MHz; Duty Cycle: 1:1.005

Medium parameters used (interpolated): $f = 2462$ MHz; $\sigma = 1.795$ S/m; $\epsilon_r = 39.332$; $\rho = 1000$ kg/m³

Phantom section: Flat Section

Ambient Temperature:22.3 Liquid Temperature:21.1

DASY5 Configuration:

- Probe: EX3DV4 - SN7510; ConvF(7.54, 7.54, 7.54); Calibrated: 2020.11.30;
- Sensor-Surface: 4mm (Mechanical Surface Detection)
- Electronics: DAE4 Sn1454; Calibrated: 2020.11.06
- Phantom: ELI v4.0; Type: QDOVA001BB; Serial: TP:1012
- Measurement SW: DASY52, Version 52.8 (8); SEMCAD X Version 14.6.10 (7331)

Ch11/Area Scan (91x91x1): Interpolated grid: dx=1.200 mm, dy=1.200 mm

Maximum value of SAR (interpolated) = 1.13 W/kg

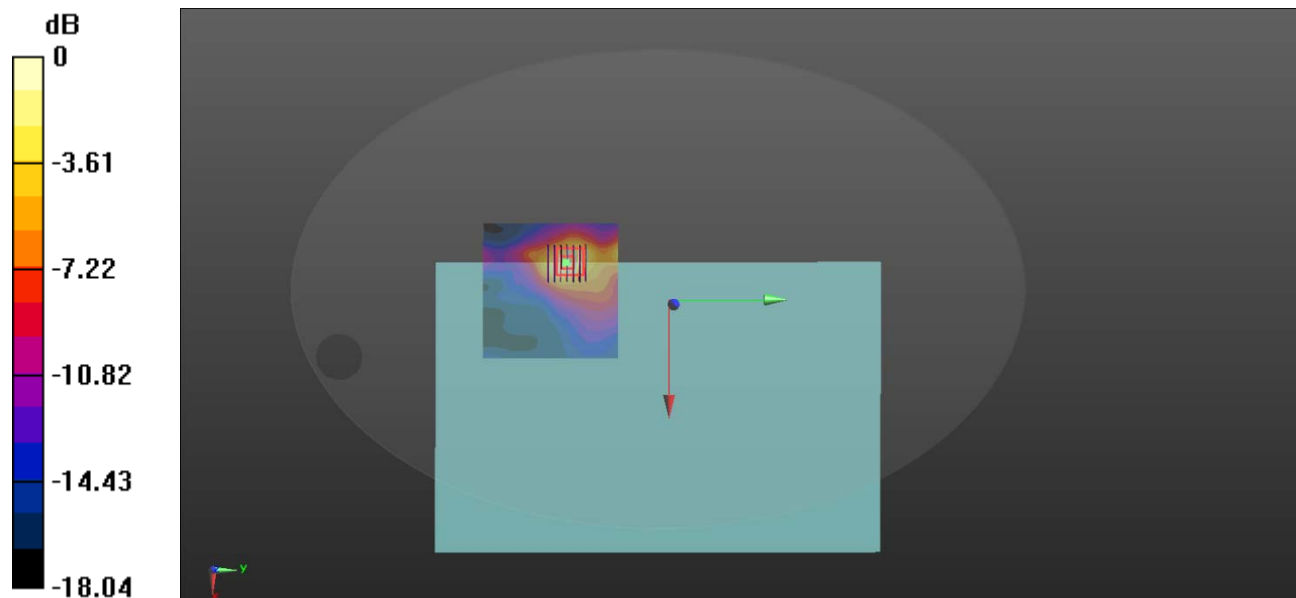
Ch11/Zoom Scan (7x7x7)/Cube 0: Measurement grid: dx=5mm, dy=5mm, dz=5mm

Reference Value = 4.312 V/m; Power Drift = 0.16 dB

Peak SAR (extrapolated) = 1.72 W/kg

SAR(1 g) = 0.772 W/kg; SAR(10 g) = 0.336 W/kg

Maximum value of SAR (measured) = 0.890 W/kg



0 dB = 0.890 W/kg

MEAS.3 Body Plane with Bottom Side 0mm on 6 Channel in IEEE802.11b Mode with Antenna Auxiliary

Date: 2021.06.15

Communication System Band: WLAN(b); Frequency: 2437 MHz; Duty Cycle: 1:1.005

Medium parameters used (interpolated): $f = 2437$ MHz; $\sigma = 1.764$ S/m; $\epsilon_r = 39.548$; $\rho = 1000$ kg/m³

Phantom section: Flat Section

Ambient Temperature:22.3 Liquid Temperature:21.1

DASY5 Configuration:

- Probe: EX3DV4 - SN7510; ConvF(7.54, 7.54, 7.54); Calibrated: 2020.11.30;
- Sensor-Surface: 4mm (Mechanical Surface Detection)
- Electronics: DAE4 Sn1454; Calibrated: 2020.11.06
- Phantom: ELI v4.0; Type: QDOVA001BB; Serial: TP:1012
- Measurement SW: DASY52, Version 52.8 (8); SEMCAD X Version 14.6.10 (7331)

Ch6/Area Scan (81x91x1): Interpolated grid: dx=1.200 mm, dy=1.200 mm

Maximum value of SAR (interpolated) = 0.615 W/kg

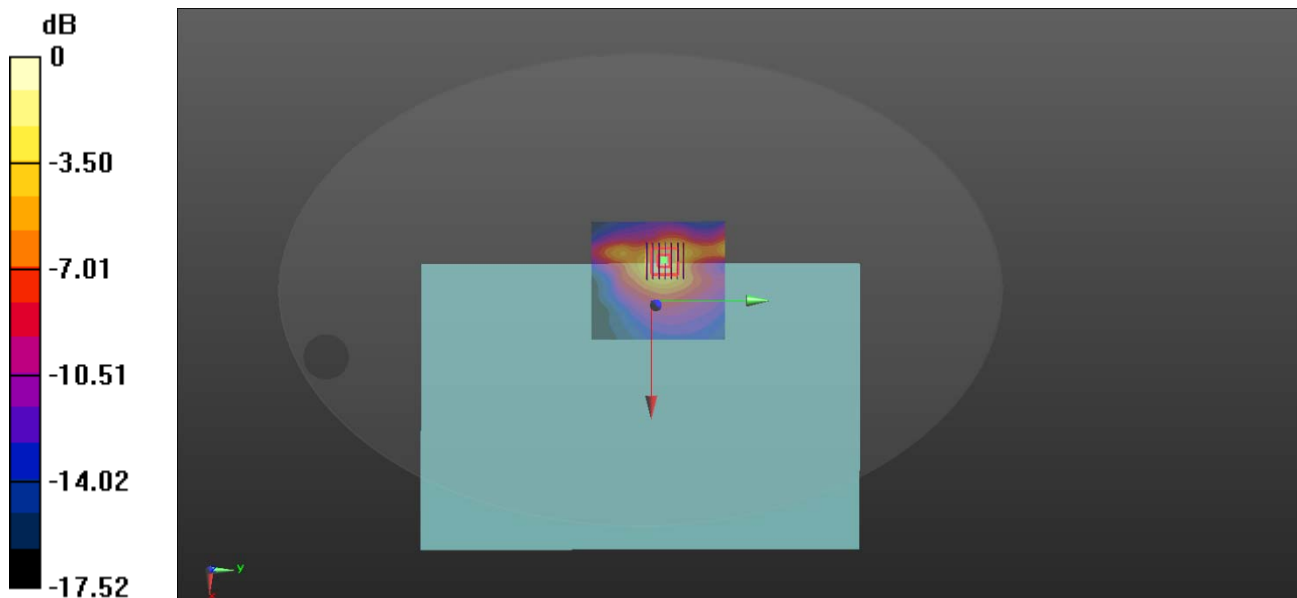
Ch6/Zoom Scan (7x7x7)/Cube 0: Measurement grid: dx=5mm, dy=5mm, dz=5mm

Reference Value = 7.672 V/m; Power Drift = 0.18 dB

Peak SAR (extrapolated) = 1.27 W/kg

SAR(1 g) = 0.565 W/kg; SAR(10 g) = 0.256 W/kg

Maximum value of SAR (measured) = 0.648 W/kg



0 dB = 0.648 W/kg

MEAS.4 Body Plane with Bottom Side 0mm on 52 Channel in IEEE802.11a Mode with Antenna Main

Date: 2021.06.16

Communication System Band: WLAN(a); Frequency: 5260 MHz; Duty Cycle: 1:1.024

Medium parameters used: $f = 5260$ MHz; $\sigma = 4.681$ S/m; $\epsilon_r = 36.824$; $\rho = 1000$ kg/m³

Phantom section: Flat Section

Ambient Temperature:22.4 Liquid Temperature:21.1

DASY5 Configuration:

- Probe: EX3DV4 - SN7510; ConvF(5.46, 5.46, 5.46); Calibrated: 2020.11.30;
- Sensor-Surface: 2mm (Mechanical Surface Detection)
- Electronics: DAE4 Sn1454; Calibrated: 2020.11.06
- Phantom: ELI v4.0; Type: QDOVA001BB; Serial: TP:1012
- Measurement SW: DASY52, Version 52.8 (8); SEMCAD X Version 14.6.10 (7331)

Ch52/Area Scan (101x101x1): Interpolated grid: dx=1.000 mm, dy=1.000 mm

Maximum value of SAR (interpolated) = 1.78 W/kg

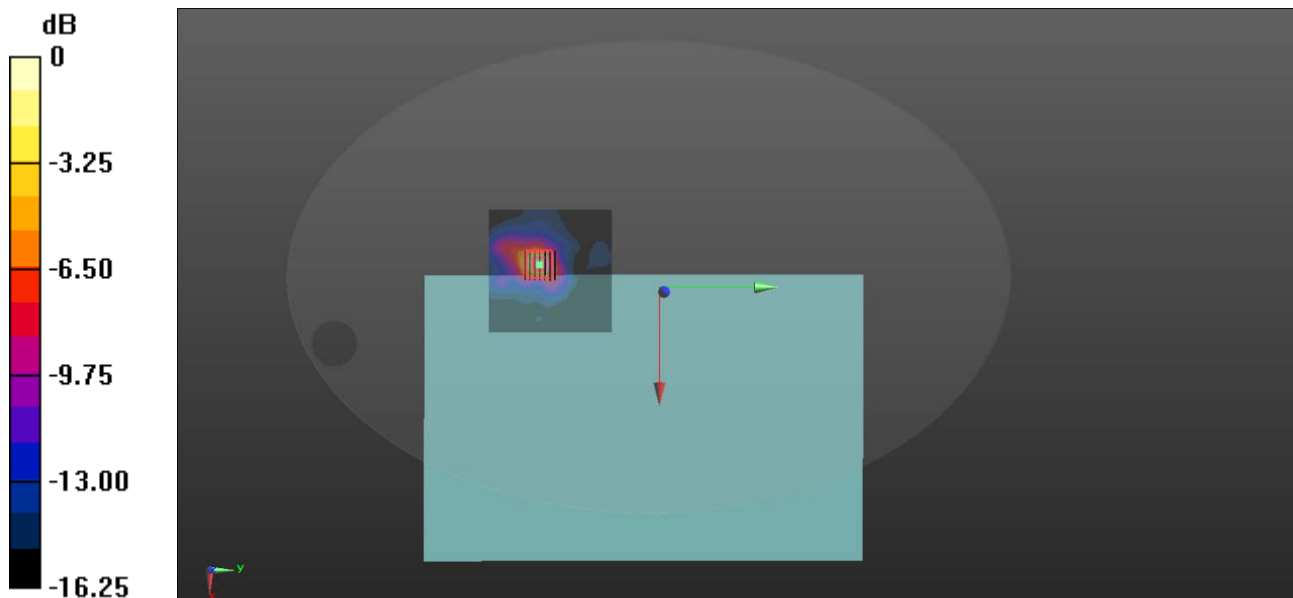
Ch52/Zoom Scan (7x7x12)/Cube 0: Measurement grid: dx=4mm, dy=4mm, dz=2mm

Reference Value = 3.268 V/m; Power Drift = 0.05 dB

Peak SAR (extrapolated) = 3.55 W/kg

SAR(1 g) = 0.931 W/kg; SAR(10 g) = 0.315 W/kg

Maximum value of SAR (measured) = 1.93 W/kg



0 dB = 1.93 W/kg

MEAS.5 Body Plane with Bottom Side 0mm on 64 Channel in IEEE802.11a Mode with Antenna Auxiliary

Date: 2021.06.16

Communication System Band: WLAN(a); Frequency: 5320 MHz;Duty Cycle: 1:1.024

Medium parameters used: f = 5320 MHz; $\sigma = 4.767$ S/m; $\epsilon_r = 36.424$; $\rho = 1000$ kg/m³

Phantom section: Flat Section

Ambient Temperature:22.4 Liquid Temperature:21.1

DASY5 Configuration:

- Probe: EX3DV4 - SN7510; ConvF(5.46, 5.46, 5.46); Calibrated: 2020.11.30;
- Sensor-Surface: 2mm (Mechanical Surface Detection)
- Electronics: DAE4 Sn1454; Calibrated: 2020.11.06
- Phantom: ELI v4.0; Type: QDOVA001BB; Serial: TP:1012
- Measurement SW: DASY52, Version 52.8 (8); SEMCAD X Version 14.6.10 (7331)

Ch64/Area Scan (101x101x1): Interpolated grid: dx=1.000 mm, dy=1.000 mm

Maximum value of SAR (interpolated) = 1.81 W/kg

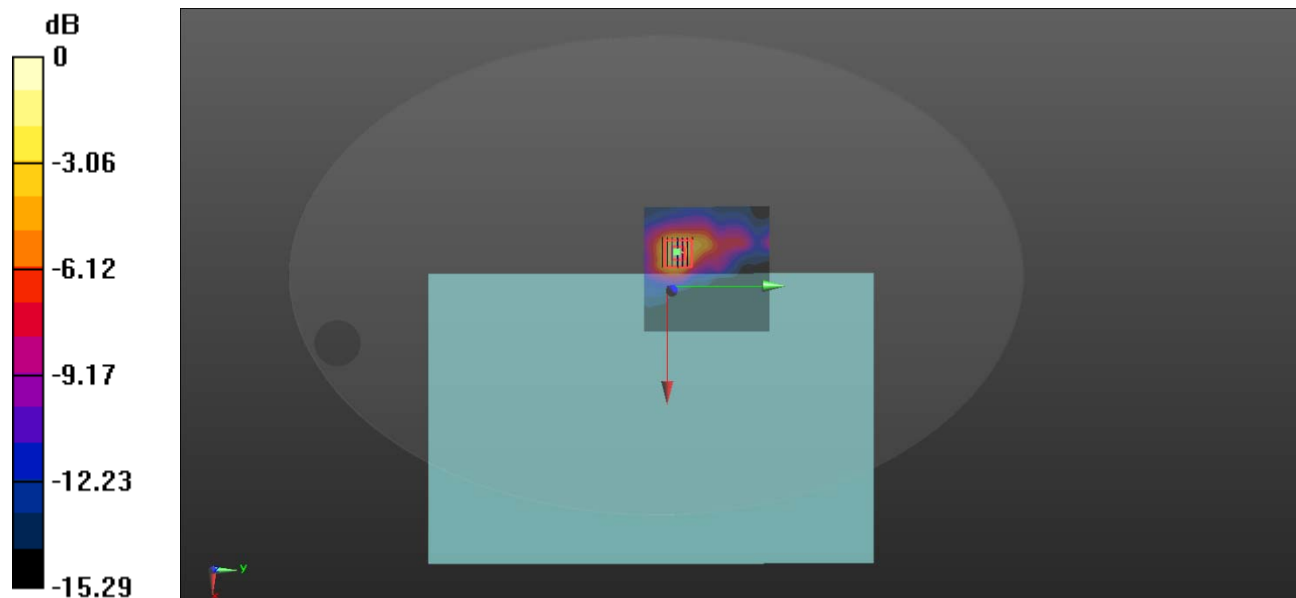
Ch64/Zoom Scan (7x7x12)/Cube 0: Measurement grid: dx=4mm, dy=4mm, dz=2mm

Reference Value = 5.350 V/m; Power Drift = -0.07 dB

Peak SAR (extrapolated) = 4.29 W/kg

SAR(1 g) = 0.920 W/kg; SAR(10 g) = 0.345 W/kg

Maximum value of SAR (measured) = 1.82 W/kg



0 dB = 1.82 W/kg

MEAS.6 Body Plane with Bottom Side 0mm on 140 Channel in IEEE802.11a Mode with Antenna Main

Date: 2021.06.17

Communication System Band: WLAN(a); Frequency: 5700 MHz; Duty Cycle: 1:1.024

Medium parameters used: $f = 5700$ MHz; $\sigma = 5.223$ S/m; $\epsilon_r = 35.374$; $\rho = 1000$ kg/m³

Phantom section: Flat Section

Ambient Temperature: 22.7 Liquid Temperature: 21.4

DASY5 Configuration:

- Probe: EX3DV4 - SN7510; ConvF(4.89, 4.89, 4.89); Calibrated: 2020.11.30;
- Sensor-Surface: 2mm (Mechanical Surface Detection)
- Electronics: DAE4 Sn1454; Calibrated: 2020.11.06
- Phantom: ELI v4.0; Type: QDOVA001BB; Serial: TP:1012
- Measurement SW: DASY52, Version 52.8 (8); SEMCAD X Version 14.6.10 (7331)

Ch140/Area Scan (101x101x1): Interpolated grid: dx=1.000 mm, dy=1.000 mm

Maximum value of SAR (interpolated) = 2.05 W/kg

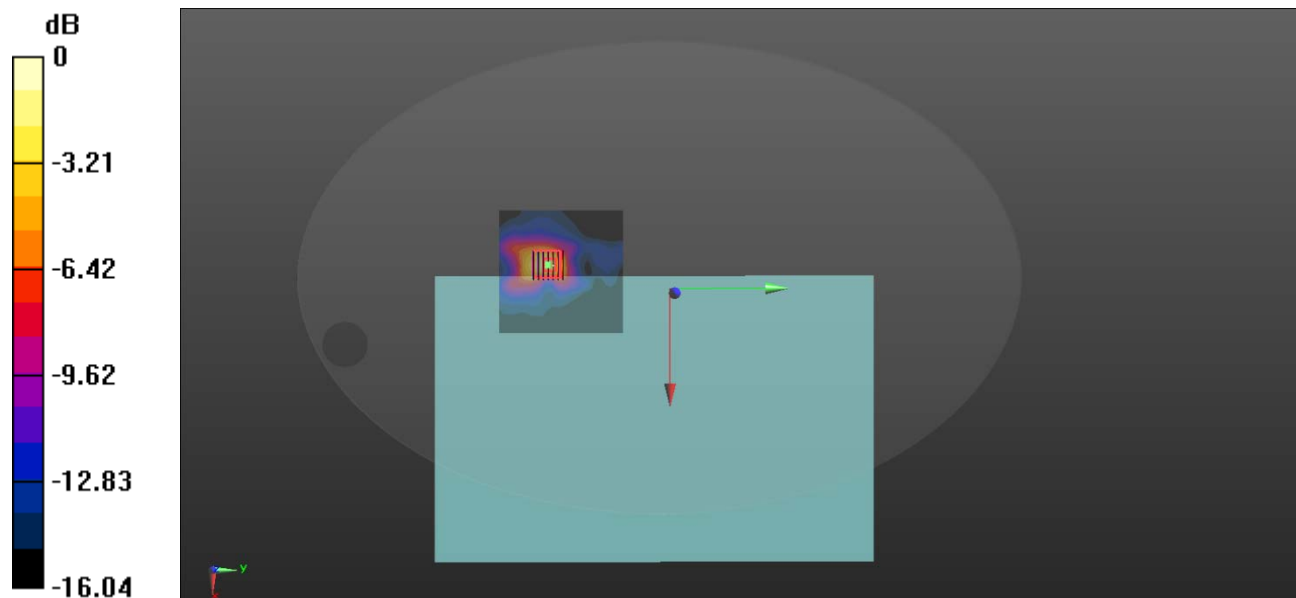
Ch140/Zoom Scan (7x7x12)/Cube 0: Measurement grid: dx=4mm, dy=4mm, dz=2mm

Reference Value = 3.315 V/m; Power Drift = -0.07 dB

Peak SAR (extrapolated) = 4.28 W/kg

SAR(1 g) = 1.05 W/kg; SAR(10 g) = 0.376 W/kg

Maximum value of SAR (measured) = 2.12 W/kg



0 dB = 2.12 W/kg

MEAS.7 Body Plane with Bottom Side 0mm on 140 Channel in IEEE802.11a Mode with Antenna Auxiliary

Date: 2021.06.17

Communication System Band: WLAN(a); Frequency: 5700 MHz; Duty Cycle: 1:1.024

Medium parameters used: $f = 5700$ MHz; $\sigma = 5.223$ S/m; $\epsilon_r = 35.374$; $\rho = 1000$ kg/m³

Phantom section: Flat Section

Ambient Temperature:22.7 Liquid Temperature:21.4

DASY5 Configuration:

- Probe: EX3DV4 - SN7510; ConvF(4.89, 4.89, 4.89); Calibrated: 2020.11.30;
- Sensor-Surface: 2mm (Mechanical Surface Detection)
- Electronics: DAE4 Sn1454; Calibrated: 2020.11.06
- Phantom: ELI v4.0; Type: QDOVA001BB; Serial: TP:1012
- Measurement SW: DASY52, Version 52.8 (8); SEMCAD X Version 14.6.10 (7331)

Ch140/Area Scan (101x101x1): Interpolated grid: dx=1.000 mm, dy=1.000 mm

Maximum value of SAR (interpolated) = 1.57 W/kg

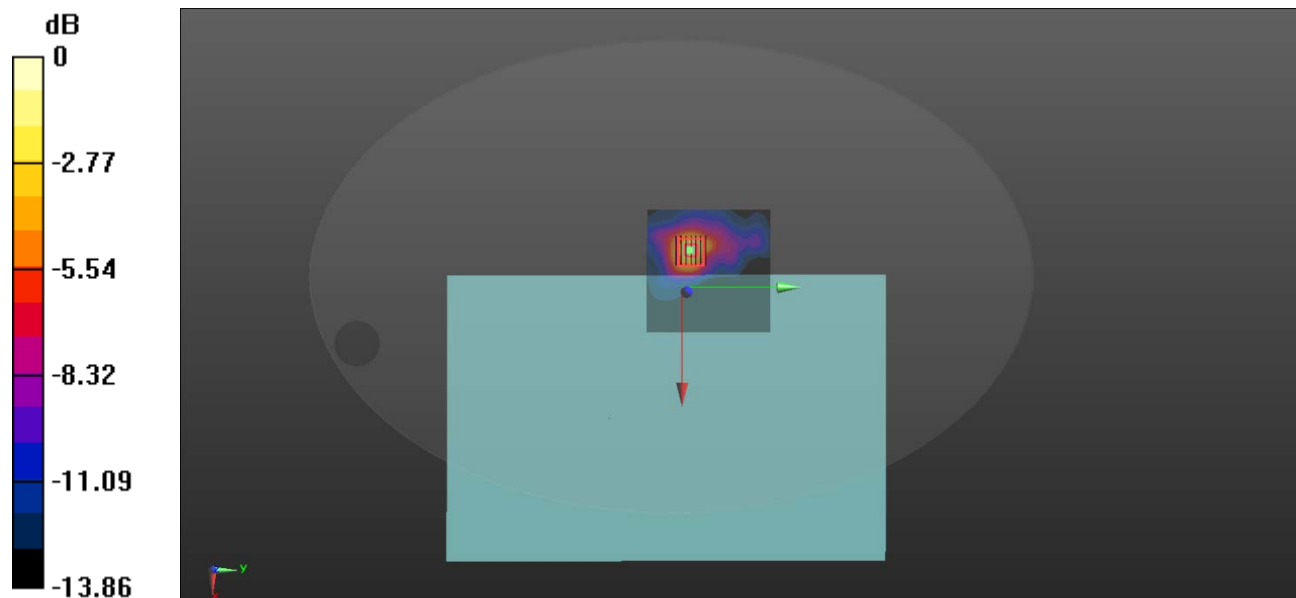
Ch140/Zoom Scan (7x7x12)/Cube 0: Measurement grid: dx=4mm, dy=4mm, dz=2mm

Reference Value = 4.307 V/m; Power Drift = -0.10 dB

Peak SAR (extrapolated) = 3.38 W/kg

SAR(1 g) = 0.724 W/kg; SAR(10 g) = 0.291 W/kg

Maximum value of SAR (measured) = 1.47 W/kg



0 dB = 1.47 W/kg

MEAS.8 Body Plane with Bottom Side 0mm on 165 Channel in IEEE802.11a Mode with Antenna Main

Date: 2021.06.18

Communication System Band: WLAN(a); Frequency: 5825 MHz; Duty Cycle: 1:1.024

Medium parameters used: $f = 5825$ MHz; $\sigma = 5.411$ S/m; $\epsilon_r = 35.121$; $\rho = 1000$ kg/m³

Phantom section: Flat Section

Ambient Temperature:22.6 Liquid Temperature:21.4

DASY5 Configuration:

- Probe: EX3DV4 - SN7510; ConvF(4.96, 4.96, 4.96); Calibrated: 2020.11.30;
- Sensor-Surface: 2mm (Mechanical Surface Detection)
- Electronics: DAE4 Sn1454; Calibrated: 2020.11.06
- Phantom: ELI v4.0; Type: QDOVA001BB; Serial: TP:1012
- Measurement SW: DASY52, Version 52.8 (8); SEMCAD X Version 14.6.10 (7331)

Ch165/Area Scan (111x111x1): Interpolated grid: dx=1.000 mm, dy=1.000 mm

Maximum value of SAR (interpolated) = 2.32 W/kg

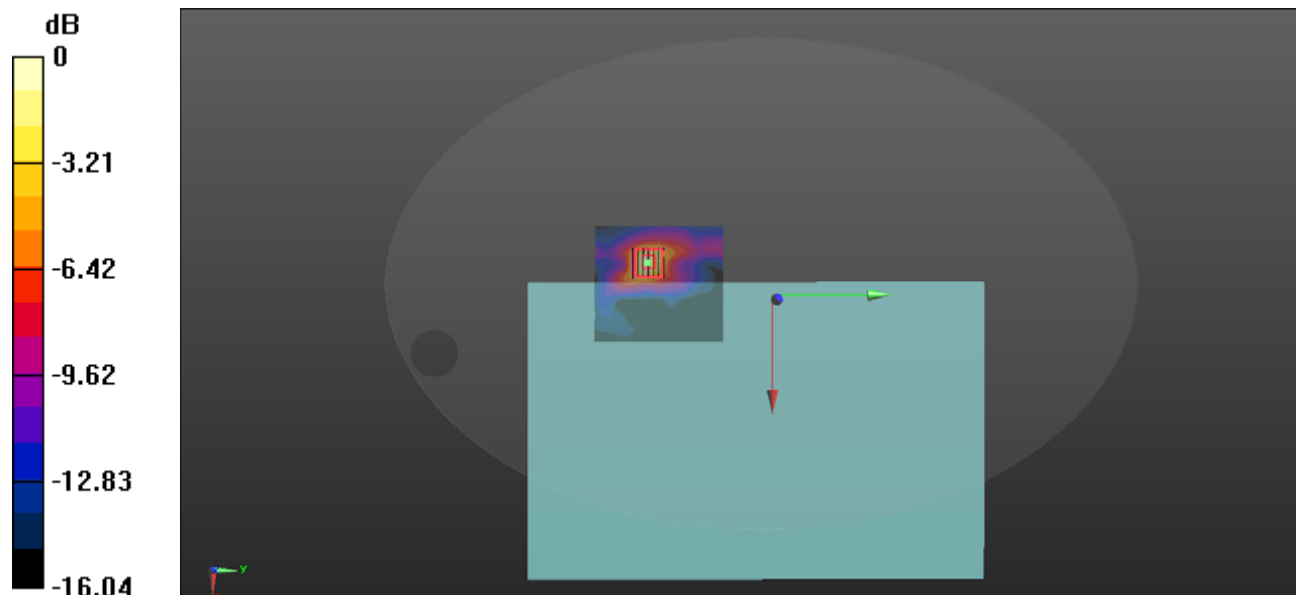
Ch165/Zoom Scan (7x7x12)/Cube 0: Measurement grid: dx=4mm, dy=4mm, dz=2mm

Reference Value = 3.513 V/m; Power Drift = 0.11 dB

Peak SAR (extrapolated) = 5.35 W/kg

SAR(1 g) = 1.13 W/kg; SAR(10 g) = 0.395 W/kg

Maximum value of SAR (measured) = 2.35 W/kg



0 dB = 2.35 W/kg

MEAS.9Body Plane with Bottom Side 0mm on 157 Channel in IEEE802.11a Mode with Antenna Auxiliary

Date: 2021.06.18

Communication System Band: WLAN(a); Frequency: 5785 MHz; Duty Cycle: 1:1.024

Medium parameters used: $f = 5785$ MHz; $\sigma = 5.386$ S/m; $\epsilon_r = 35.294$; $\rho = 1000$ kg/m³

Phantom section: Flat Section

Ambient Temperature:22.6 Liquid Temperature:21.4

DASY5 Configuration:

- Probe: EX3DV4 - SN7510; ConvF(4.96, 4.96, 4.96); Calibrated: 2020.11.30;
- Sensor-Surface: 2mm (Mechanical Surface Detection)
- Electronics: DAE4 Sn1454; Calibrated: 2020.11.06
- Phantom: ELI v4.0; Type: QDOVA001BB; Serial: TP:1012
- Measurement SW: DASY52, Version 52.8 (8); SEMCAD X Version 14.6.10 (7331)

Ch157/Area Scan (101x101x1): Interpolated grid: dx=1.000 mm, dy=1.000 mm

Maximum value of SAR (interpolated) = 2.06 W/kg

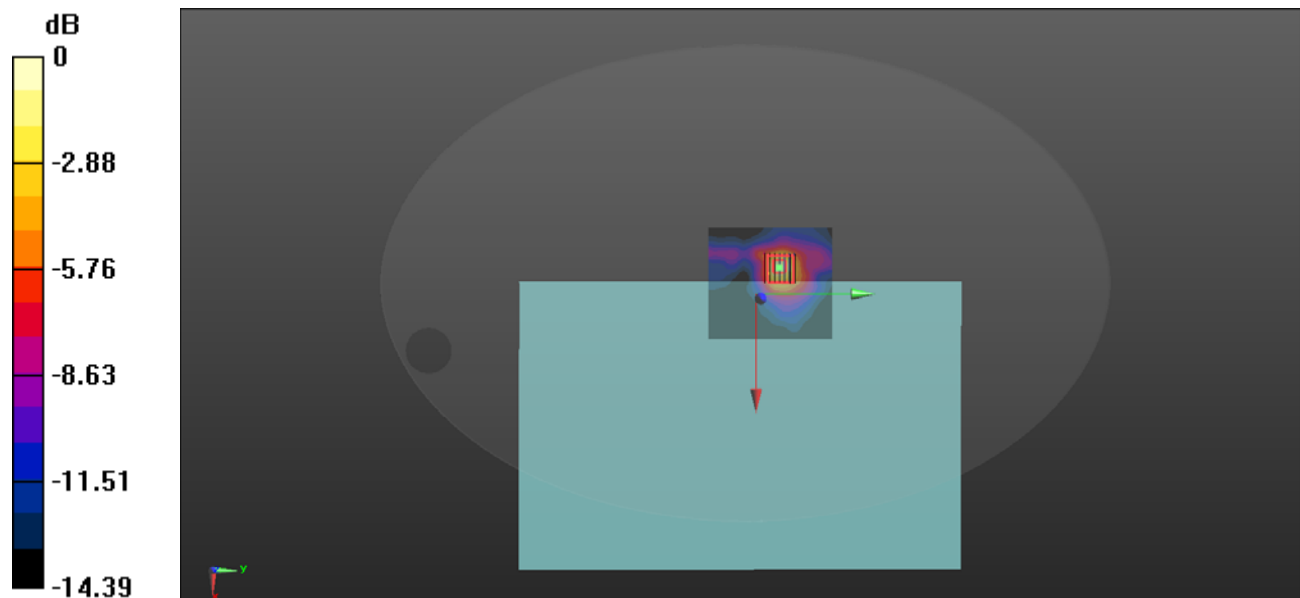
Ch157/Zoom Scan (7x7x12)/Cube 0: Measurement grid: dx=4mm, dy=4mm, dz=2mm

Reference Value = 4.712 V/m; Power Drift = 0.20 dB

Peak SAR (extrapolated) = 5.64 W/kg

SAR(1 g) = 1.12 W/kg; SAR(10 g) = 0.355 W/kg

Maximum value of SAR (measured) = 2.26 W/kg



0 dB = 2.26 W/kg

ANNEX D EUT EXTERNAL PHOTOS

Please refer the document "BL-SZ2150462-AW.pdf".

ANNEX E SAR TEST SETUP PHOTOS

Please refer the document "BL-SZ2150462-AS.pdf".

ANNEX F CALIBRATION REPORT

Please refer the document "CALIBRATION REPORT.pdf".



--END OF REPORT--